

Public Involvement Handout

**County M
County C - Fenwood
Big Eau Pleine River B-37-0171
Marathon County**

ID 6666-03-01(71)



Handout date: July 2025

Thank you for your interest in this project. We look forward to your feedback.

Purpose of handout

The Marathon County Highway Department and the Wisconsin Department of Transportation (WisDOT) are in the process of developing plans to rehabilitate the County M bridge over the Big Eau Pleine River.

The purpose of this handout is to provide information regarding the proposed improvements, describe the potential impacts it would have on the community, and offer an opportunity for public comment.

Public input/comments

Your comments assist us in developing a project that will serve the needs of the traveling public, as well as the needs of the local community and are welcomed and appreciated throughout the design process. Included at the end of this handout is a comment form that may be used for written comments regarding the proposed improvements. You are encouraged to fill out this form and return using the common form attached. Comments may also be submitted via email or phone to the contact listed below.

Project location

The project is located on County M in the town of Cleveland north of WIS 153.



Project Location

Project purpose and need

The existing bridge (B-37-0171) is a four span concrete girder bridge. The bridge was constructed in 1975 and underwent repairs in 1996, 1997, and 2019.

There is deterioration throughout the existing bridge deck (cracking and breaking away of concrete), spalling (breaking away) of concrete on the abutment and wingwalls, undermining of the south abutment and missing riprap (stone for erosion control in high water events), and scour ongoing at the pier in the river.

The existing guardrail on the roadway is deteriorated and does not meet modern safety standards with turndown ends.



Existing Bridge

Proposed improvements

The project is programmed as a bridge rehabilitation project. Marathon County has received federal funding through WisDOT to help complete the repairs. The Marathon County Highway Department is administering the design process.

Proposed improvements include replacement of the existing bridge deck and bridge railings and construction of new roadway approach pavement and guardrails.

Additional improvements would include:

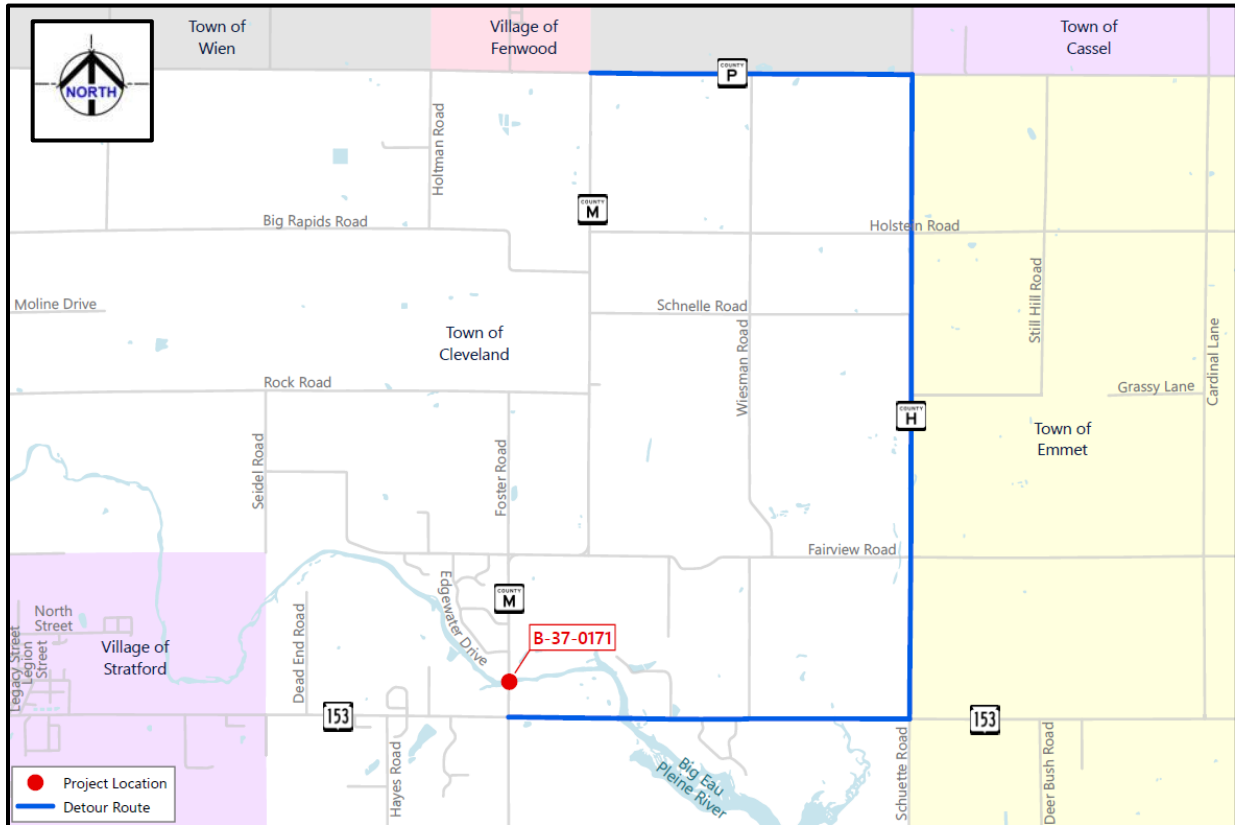
- Concrete surface repairs throughout the bridge
- Replacement of girder bearing pads and cleaning of abutment seats
- Repairing of cracking on the abutments
- Replacement of missing riprap (stone for erosion control)
- Complete scour repair at the pier in the river

See preliminary plan of proposed improvements at the end of this handout.

Traffic impacts

- Construction is currently scheduled for 2027.
- The bridge will be closed for up to three months (anticipate mid-May to Labor Day).
- Local access to property owners and emergency services will be maintained along County M.

The County M detour will be posted along WIS 153 to County H to County P. See the map on the following page.



Detour Route Map

Real estate impacts

None, all work is anticipated to occur inside the existing highway right of way.

Schedule

- Initial data collection and design development – spring 2025
- Preliminary plans – Spring 2025
- Local officials meeting – June 23, 2025
- Public involvement comment period – July/August 2025
- Environmental document – fall 2025
- Final plans – August 1, 2026
- Construction – summer 2027 (June to August anticipated)

Public input/comments

Please submit comments using one of the following methods so that we receive them by **August 22, 2025**, to be considered during design.

1. Fill out the comment form attached to this document and mail to the designer.
2. Email comments or questions to the contact listed below.
3. Call the contact below.

Project contact

James Griesbach
Highway Commissioner
Marathon County Highway Department
james.griesbach@marathoncounty.gov
(715) 261-1801

Stephanie Christensen, PE
Project Manager
EMCS, Inc. (designer)
schristensen@emcsinc.com
(715) 318-9017

Fold here

Place
Stamp
Here

Stephanie Christensen
EMCS, Inc.
327 North 17th Avenue, Suite 304
Wausau, WI 54401

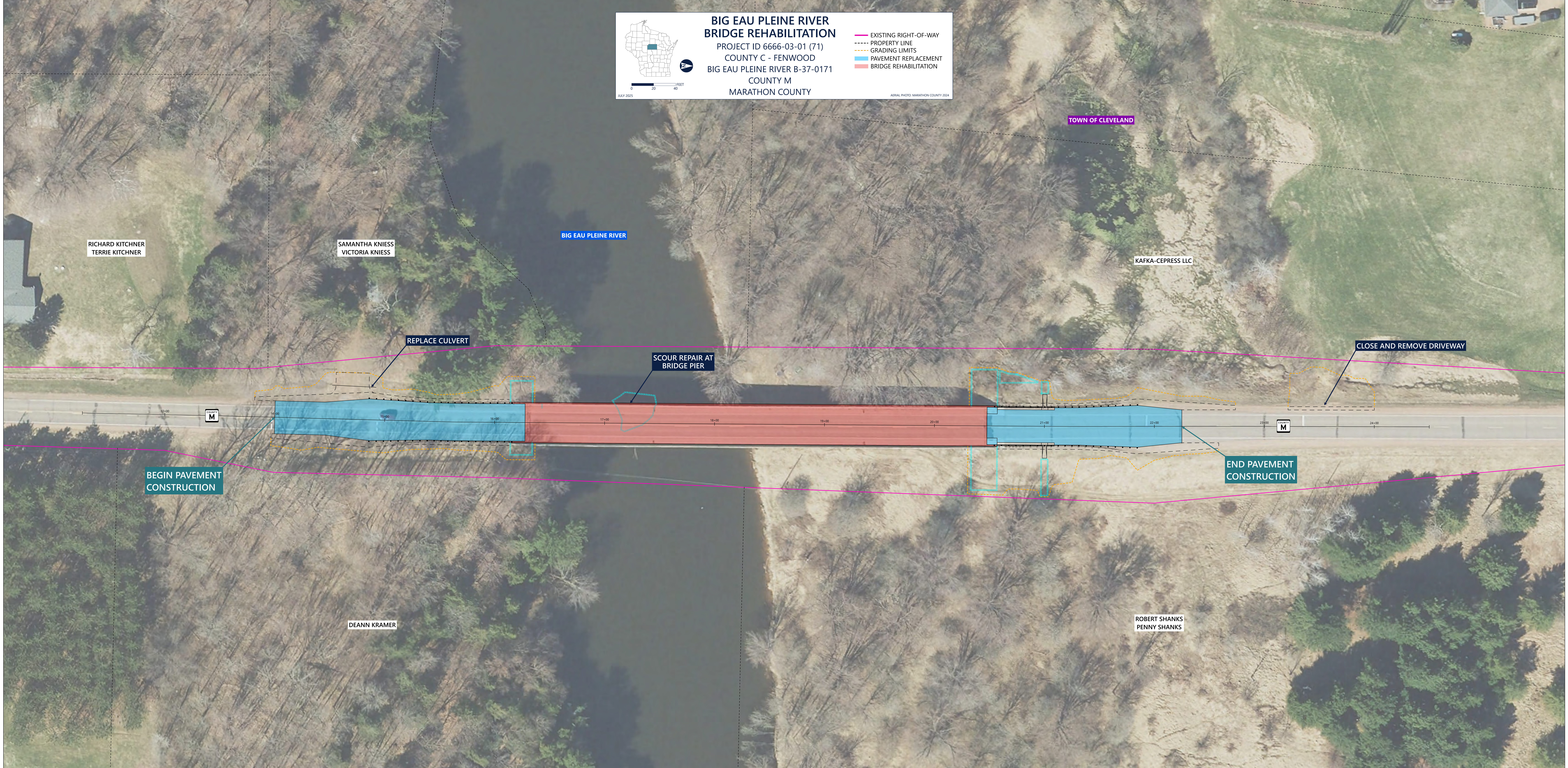
To mail, fold here and tape.

BIG EAU PLEINE RIVER BRIDGE REHABILITATION
 PROJECT ID 6666-03-01 (71)
 COUNTY C - FENWOOD
 BIG EAU PLEINE RIVER B-37-0171
 COUNTY M
 MARATHON COUNTY

EXISTING RIGHT-OF-WAY
 PROPERTY LINE
 GRADING LIMITS
 PAVEMENT REPLACEMENT
 BRIDGE REHABILITATION

0 20 40 FEET
 JULY 2025

AERIAL PHOTO: MARATHON COUNTY 2024



RICHARD KITCHNER
 TERRIE KITCHNER

SAMANTHA KNISS
 VICTORIA KNISS

BIG EAU PLEINE RIVER

TOWN OF CLEVELAND

KAFKA-CEPRESS LLC

REPLACE CULVERT

SCOUR REPAIR AT
 BRIDGE PIER

CLOSE AND REMOVE DRIVEWAY

BEGIN PAVEMENT
 CONSTRUCTION

END PAVEMENT
 CONSTRUCTION

DEANN KRAMER

ROBERT SHANKS
 PENNY SHANKS

13+00
 COUNTY M

23+00
 COUNTY M

14+00

15+00

16+00

17+00

18+00

19+00

20+00

21+00

22+00

23+00

24+00