

Request for Proposals

## **APPENDIX A**

### **Building Floor Plans and Photos**

Former UWSP-Wausau Campus

518 S 7<sup>th</sup> Ave

Wausau, WI 54401



**FOR FURTHER INFORMATION  
PLEASE CONTACT:**

Troy Torgerson, Facility Planner  
Marathon County Facilities & Capital Management  
1000 Lake View Drive Suite 300, Door #35  
Wausau, WI 54401  
(715)261-6980

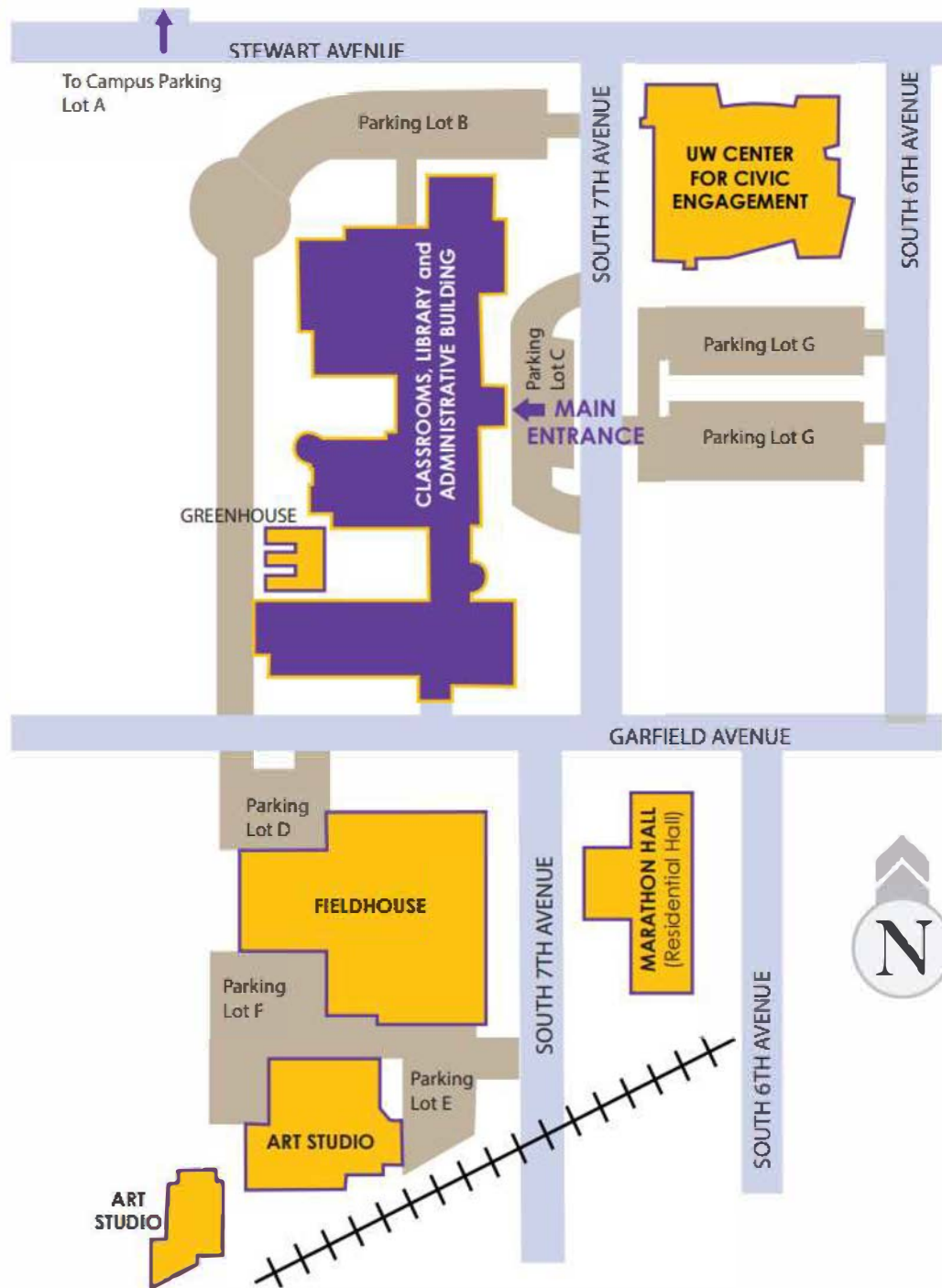
[facilities.capital@marathoncounty.gov](mailto:facilities.capital@marathoncounty.gov)

## Current Lease Holders

Below is a list of organizations currently leasing space on the UWSP Wausau Campus.

All questions regarding leases and the future plans of these organizations should be directed to the lease holders at the contact information below.

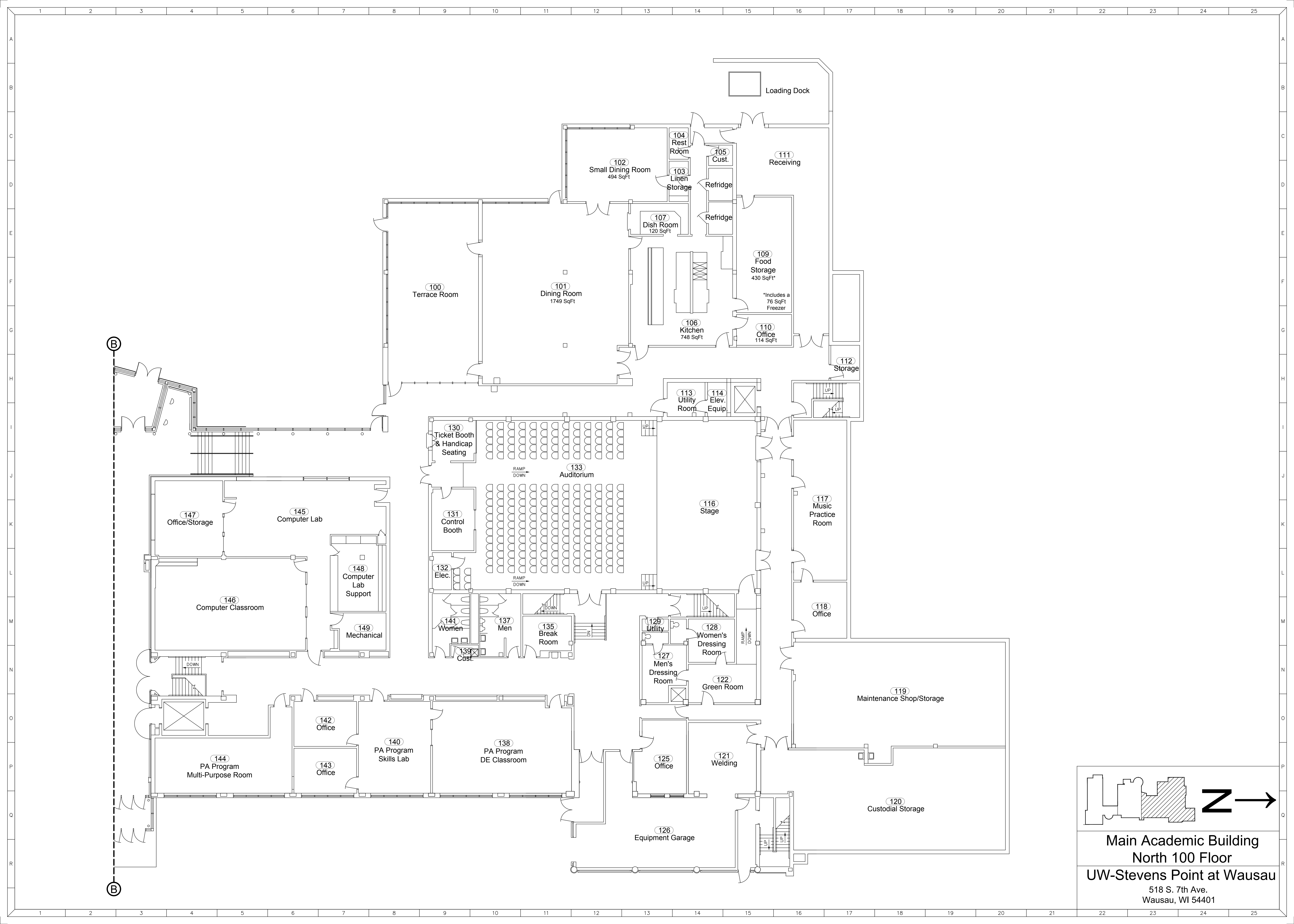
	Room	Phone	Email	Contact Name
<b>MAIN BUILDING</b>				
Wausau School District Project Life—090	90	715-261-0500		Wausau School District
North Central AHEC (Area Health Education Centers)086	86	715-849-2432	<a href="mailto:nthill@nahec-wi.org">nthill@nahec-wi.org</a>	Director: Nicole Thill
UW Madison Physician Assistant Program	138, 140, 142, 143, 144	608-263-5621	<a href="mailto:Paprogram@med.wisc.edu">Paprogram@med.wisc.edu</a>	
These Hands School of Massage	195	715-849-4881	<a href="mailto:Thsomllc@gmail.com">Thsomllc@gmail.com</a>	
Northern Highland AHEC	333	715-218-6699	<a href="mailto:gkell@wnhahec.org">gkell@wnhahec.org</a>	Director: Gail Kell
<b>CENTER FOR CIVIC ENGAGEMENT</b>				
WIPPS -also shares the 104 suite with some staff/faculty from	100	715-600-6636	<a href="mailto:Info@wipps.org">Info@wipps.org</a>	
WPR	202	715-679-5125		WPR Central Region



# Main Building

518 S. 7<sup>th</sup> Ave., Wausau, Wis.





Loading Dock

102 Small Dining Room  
494 SqFt

104 Rest Room

105 Cust.

111 Receiving

103 Linen Storage

Refridge

107 Dish Room  
120 SqFt

Refridge

100 Terrace Room

101 Dining Room  
1749 SqFt

109 Food Storage  
430 SqFt\*

\*Includes a 76 SqFt Freezer

106 Kitchen  
748 SqFt

110 Office  
114 SqFt

112 Storage

113 Utility Room

114 Elev. Equip.

130 Ticket Booth & Handicap Seating

133 Auditorium

116 Stage

117 Music Practice Room

147 Office/Storage

145 Computer Lab

131 Control Booth

148 Computer Lab Support

146 Computer Classroom

149 Mechanical

132 Elec.

141 Women

137 Men

135 Break Room

129 Utility

128 Women's Dressing Room

127 Men's Dressing Room

122 Green Room

119 Maintenance Shop/Storage

142 Office

140 PA Program Skills Lab

138 PA Program DE Classroom

125 Office

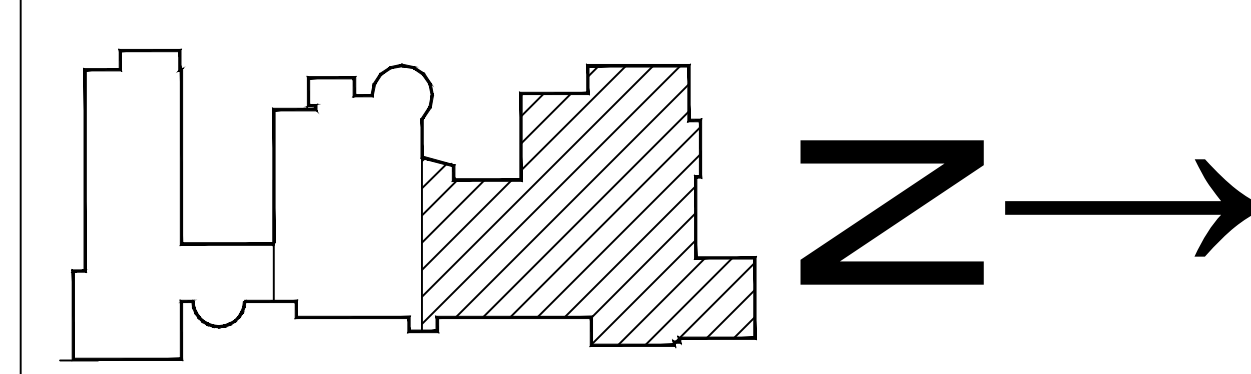
121 Welding

144 PA Program Multi-Purpose Room

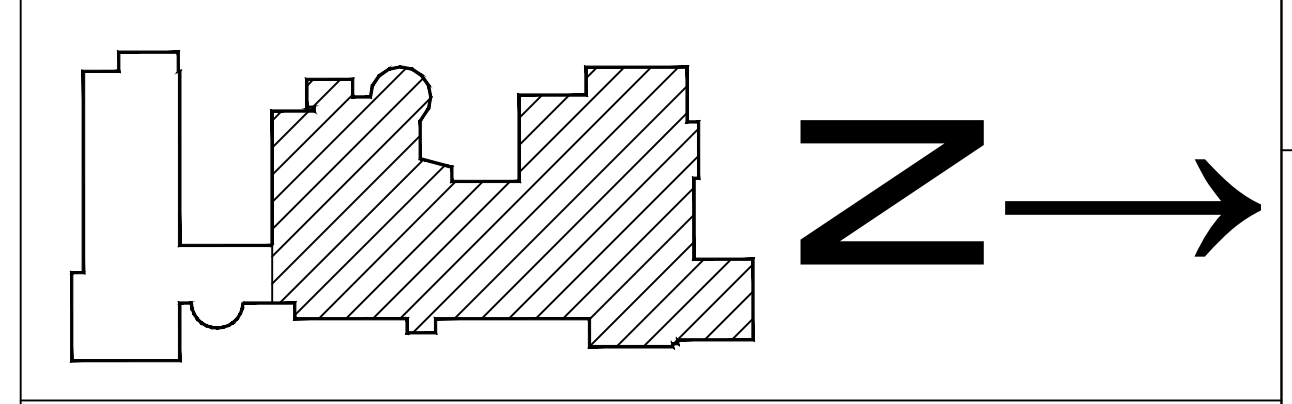
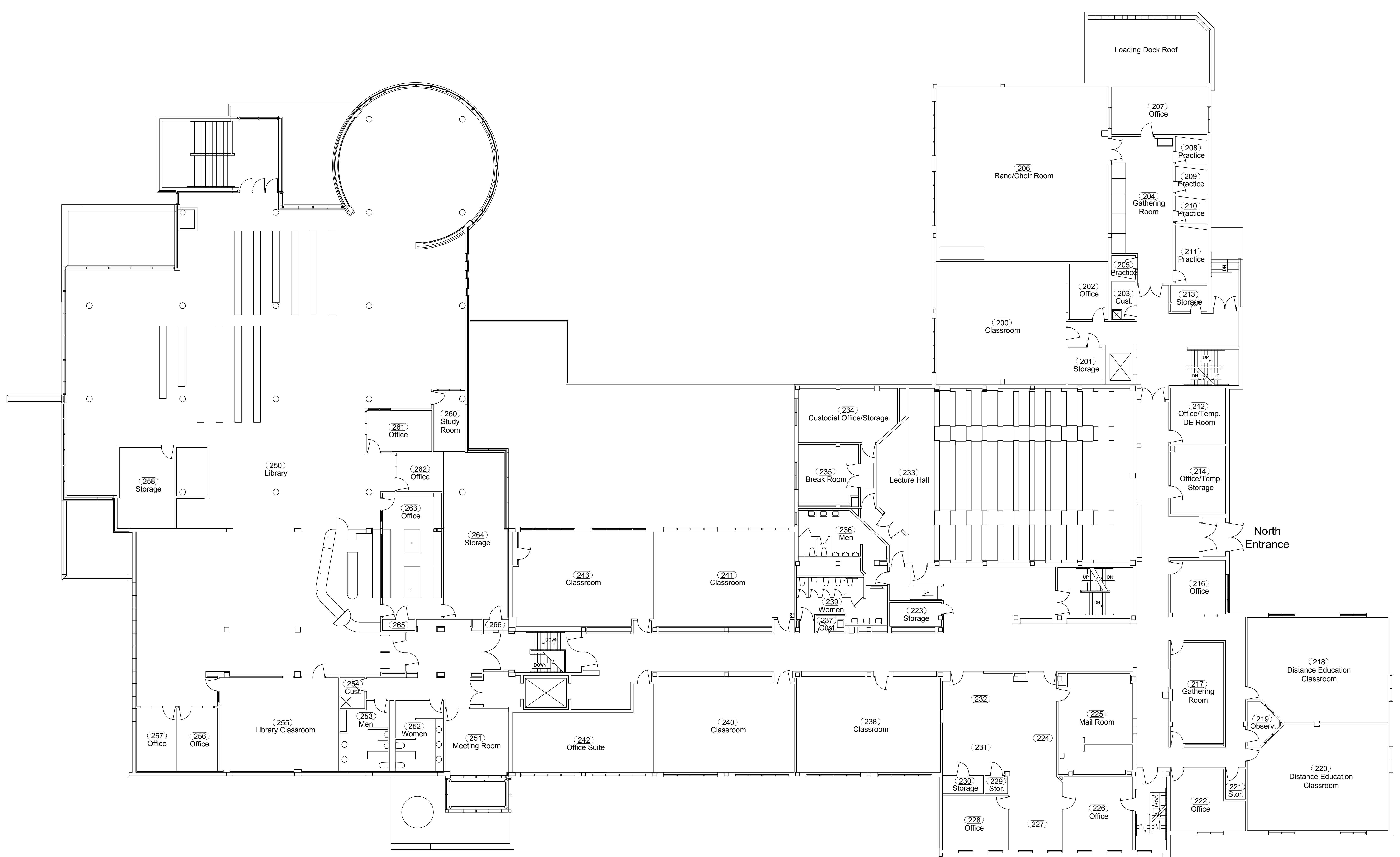
143 Office

120 Custodial Storage

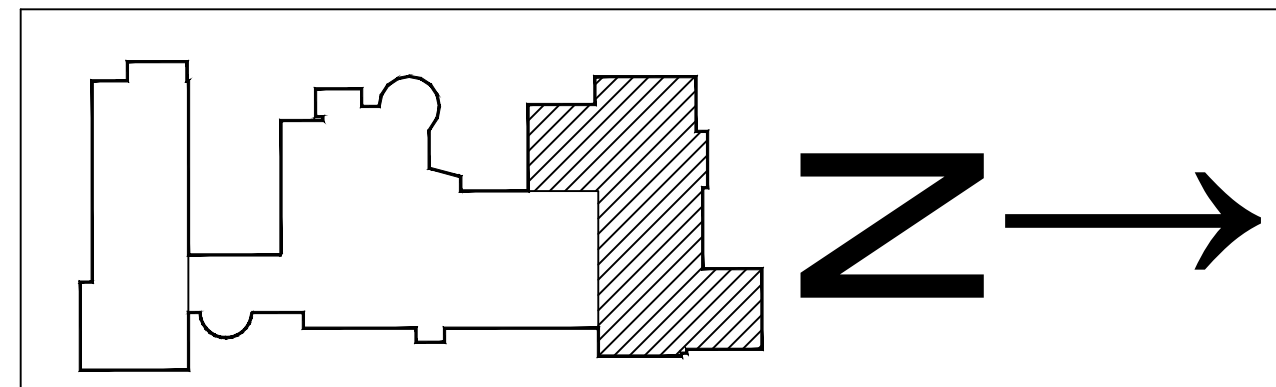
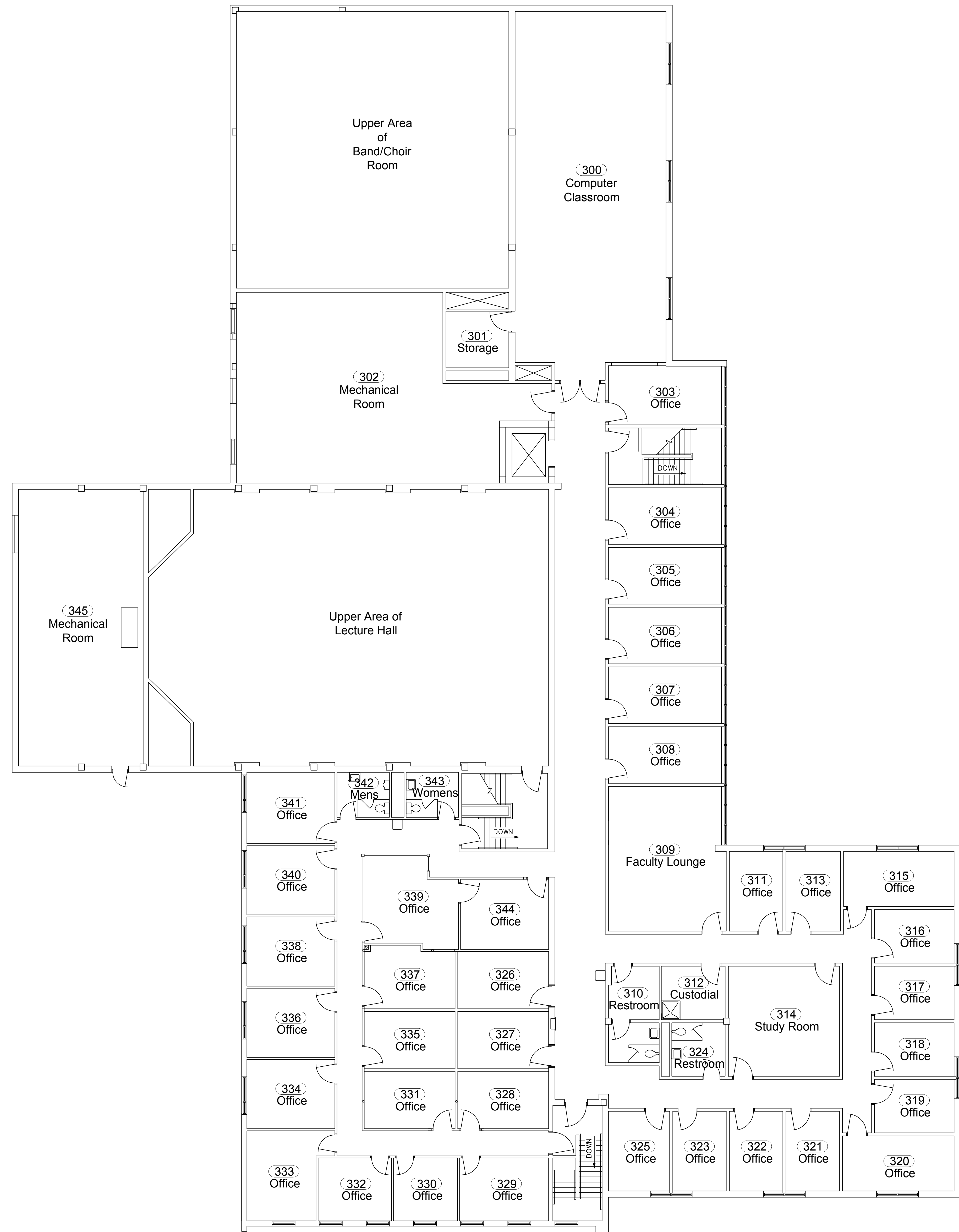
126 Equipment Garage



Main Academic Building  
North 100 Floor  
UW-Stevens Point at Wausau  
518 S. 7th Ave.  
Wausau, WI 54401



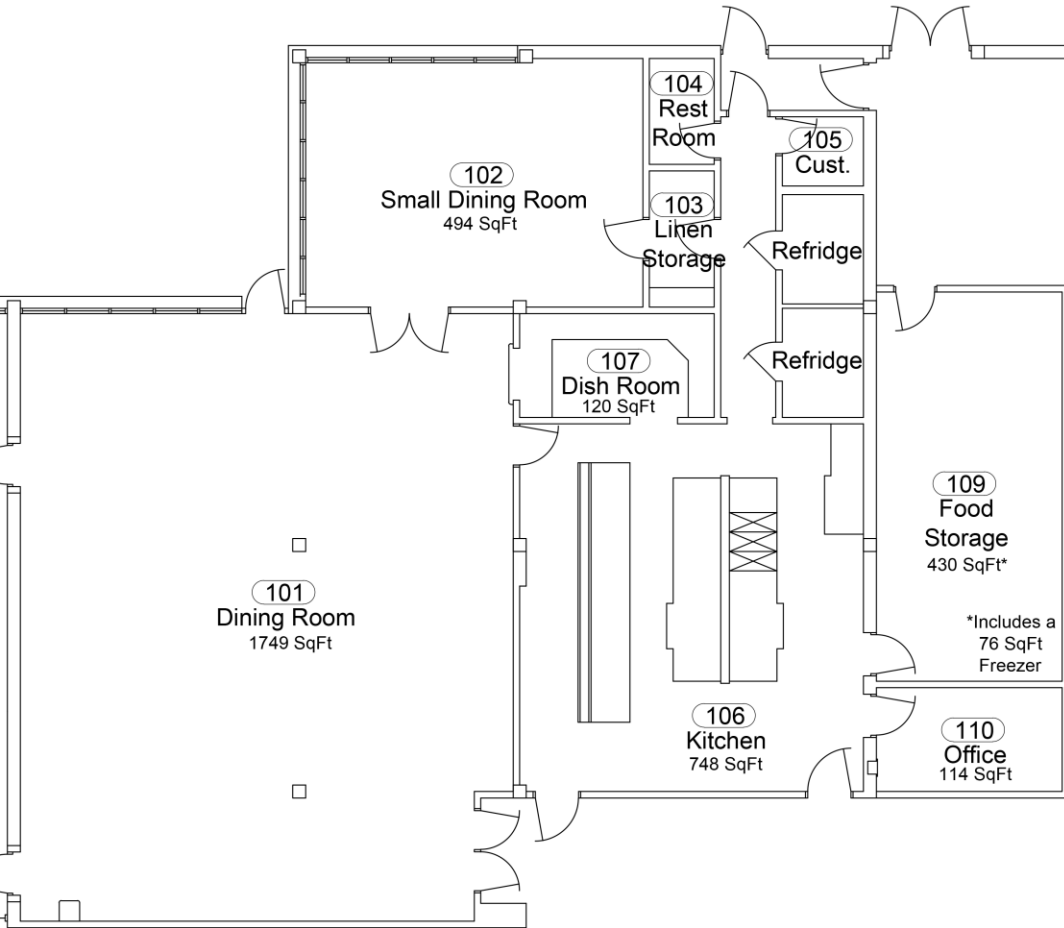
**Main Academic Building**  
**North 200 Floor**  
**UW-Stevens Point at Wausau**  
 518 S. 7th Ave.  
 Wausau, WI 54401



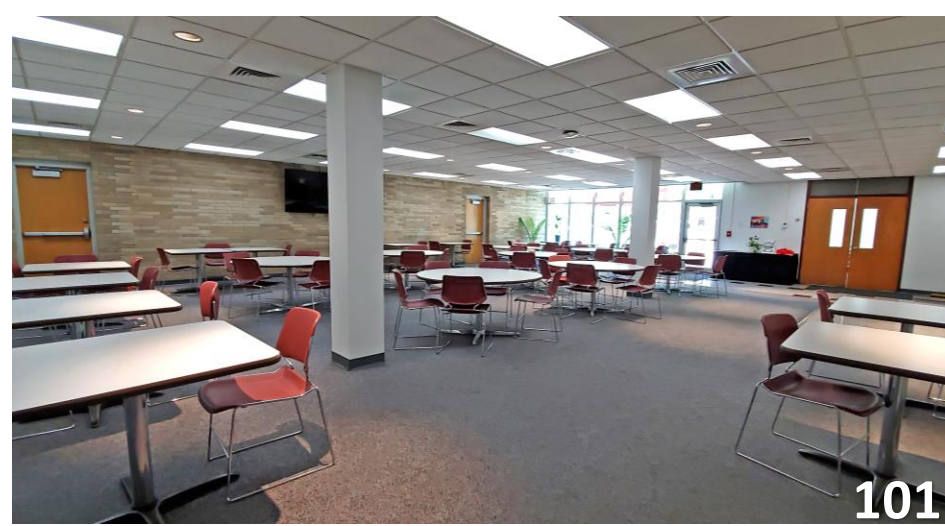
**Main Academic Building**  
**North 300 Floor**  
**UW-Stevens Point at Wausau**  
 518 S. 7th Ave.  
 Wausau, WI 54401

# Dining Services

**3,655 Total SqFt.**



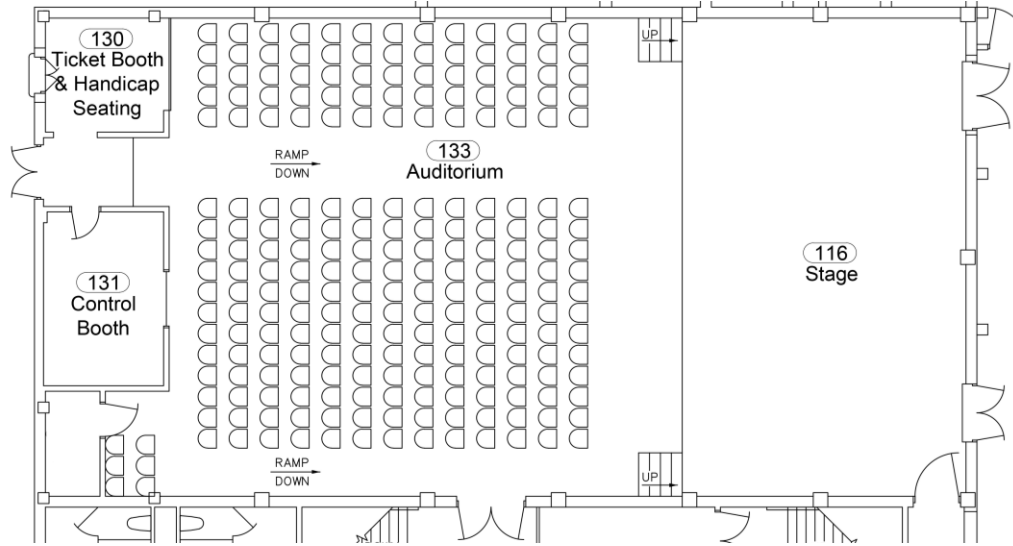
- 101 Dining Room – 1,749 SqFt.
  - 86 Seating Capacity
- 102 Small Dining Room – 494 SqFt.
- 106 Kitchen – 748 SqFt.
  - Two 52 Sq.Ft. Walk-in Refrigerators
- 107 Dish Room – 120 SqFt.
- 109 Food Storage – 430 SqFt.
  - Includes a 76 SqFt. Walk-in Freezer
- 110 Office – 114 SqFt.





# 133 Auditorium

**3,610 Total SqFt.**



- 116 Stage – 1,123 SqFt.
  - 38' Wide, 11'9" High Proscenium
  - 13' Trim Height
- 130 Handicap Seating – 116 SqFt.
- 131 Control Booth – 173 SqFt.
- 133 Auditorium – 2,196 SqFt.
  - 232 Seating Capacity
  - Large Projection Screen
  - 48 – 1.8Kw Lighting Dimmers



133



133

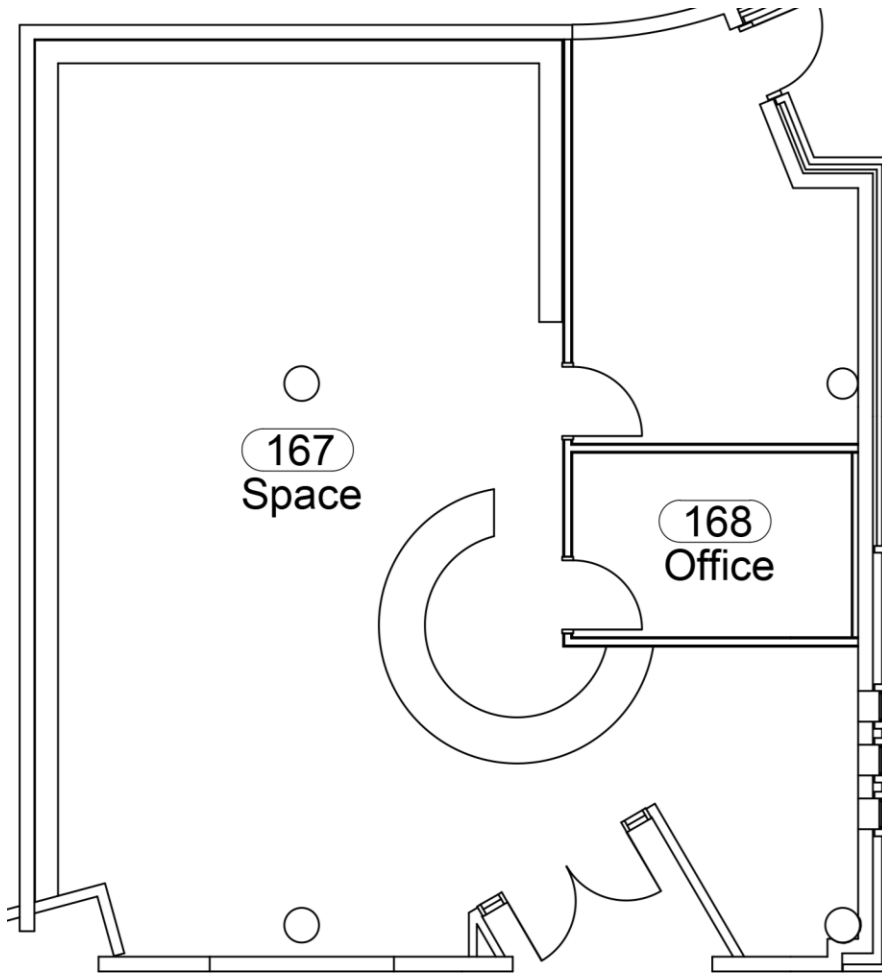


133

# 167 Bookstore

**1,119 Total SqFt.**

- 167 Bookstore – 1,022 SqFt.
  - Circular Customer Service Desk
- 168 Office – 97 SqFt.





167



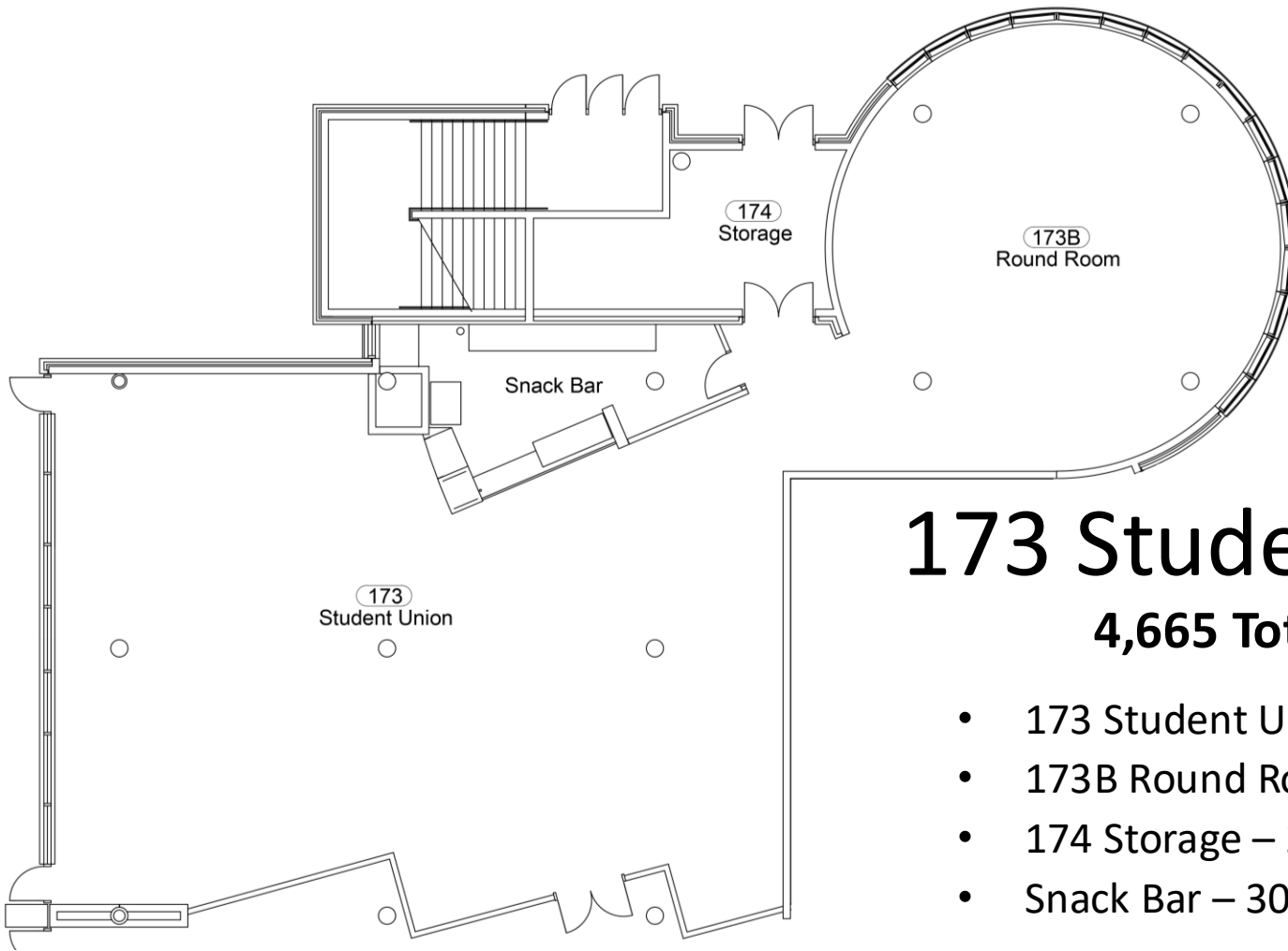
167



167



168



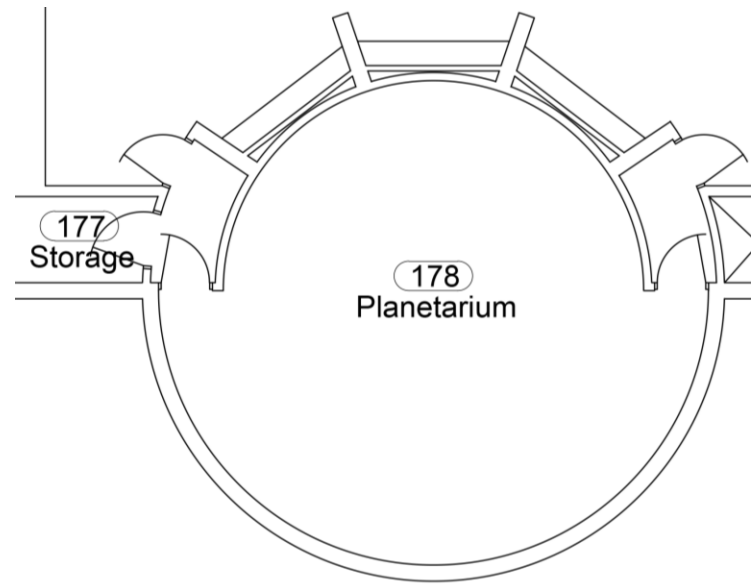
# 173 Student Union

**4,665 Total SqFt.**

- 173 Student Union – 2,870 SqFt.
- 173B Round Room – 1,198 SqFt.
- 174 Storage – 296 SqFt.
- Snack Bar – 301 SqFt.



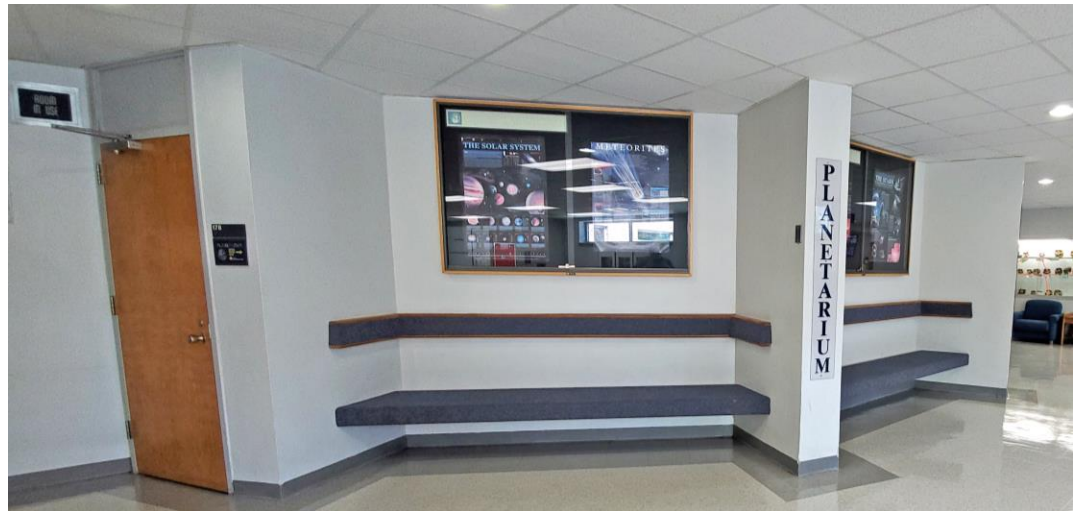
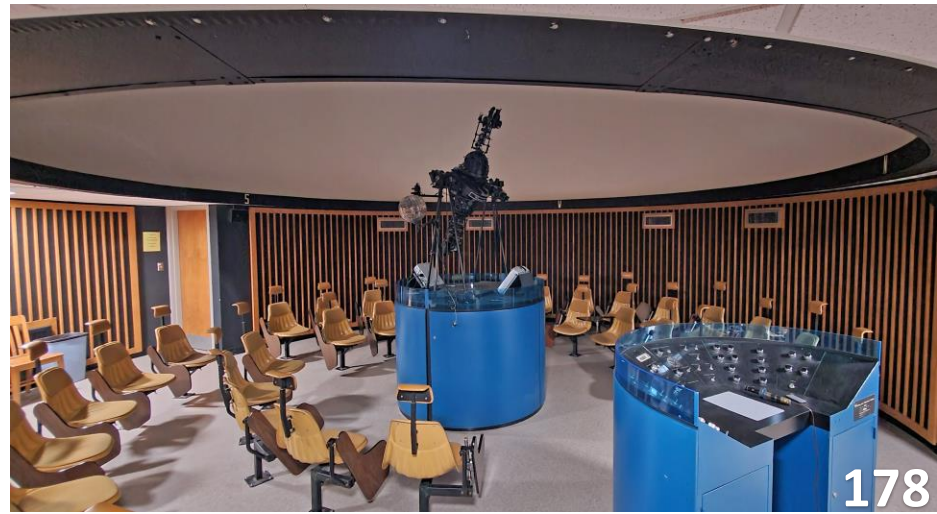
- Currently Contains
  - Ping Pong Table
  - Slate Pool Table
  - 42" TV and Gaming System with 50,000 Games
  - Three Zone Audio System
  - Tables & Chairs for Relaxing or Studying

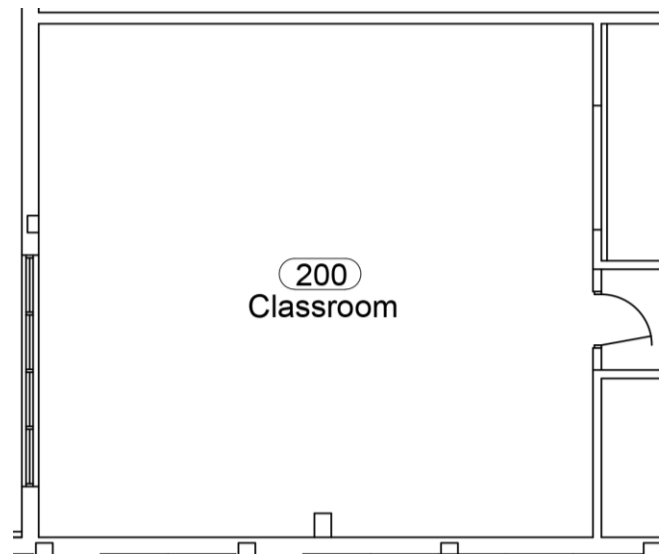


# 178 Planetarium

**710 Total SqFt.**

- 36 Total Seats
- Projector Last Renovated in 2006

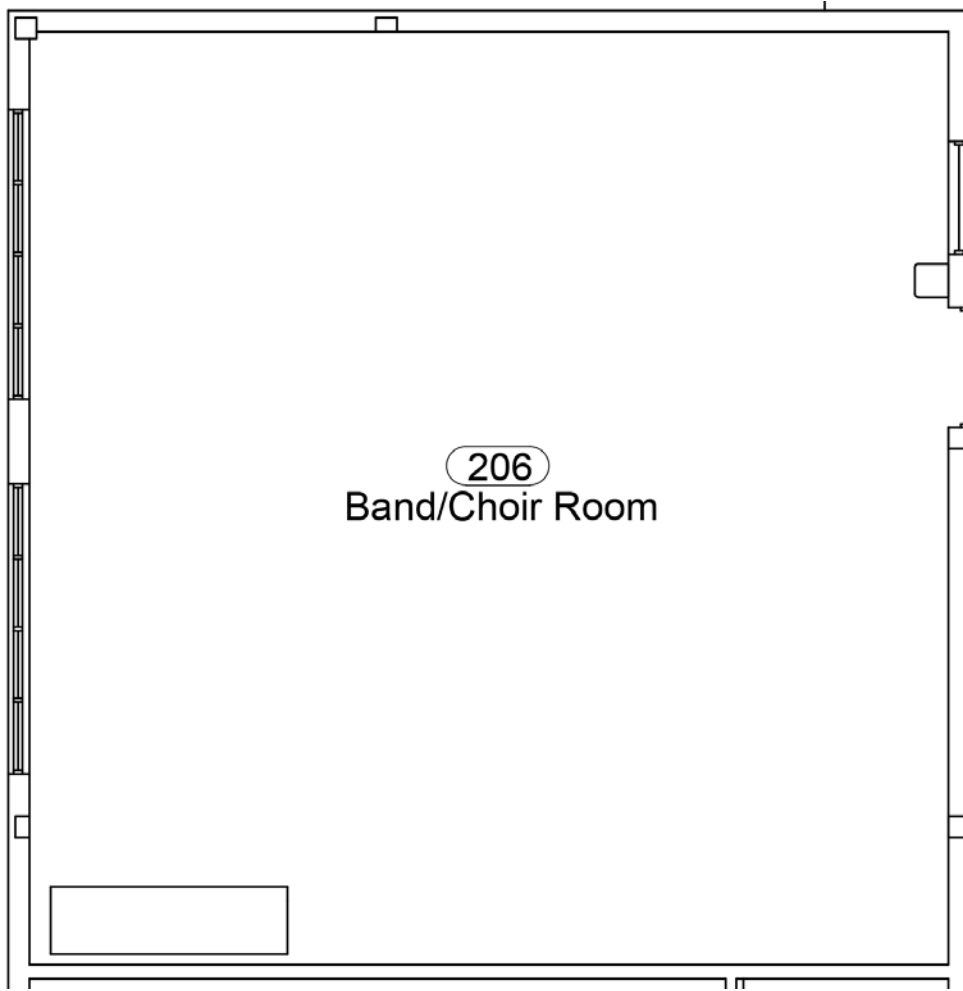




# 200 Classroom

**994 Total SqFt.**

- 28 Seating Capacity
- Three Dry Erase Boards with Music Staff Lines
- Projection Screen

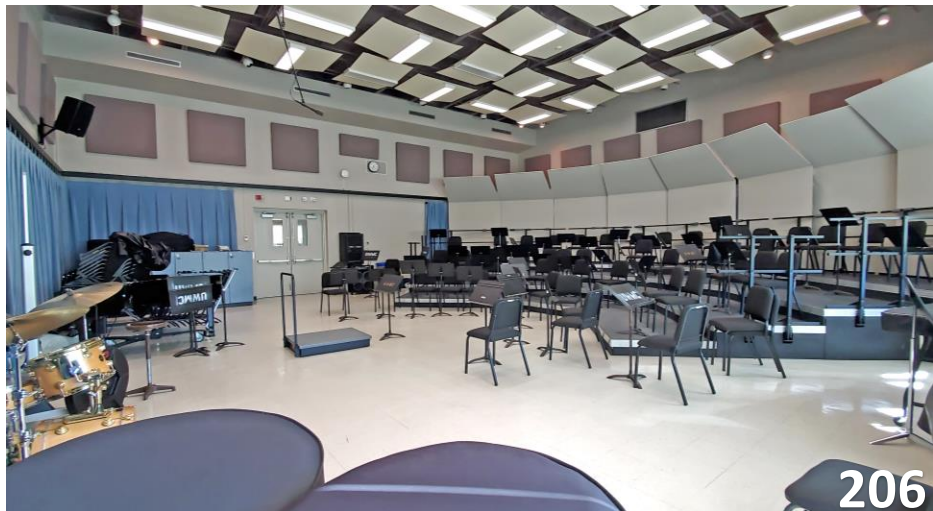
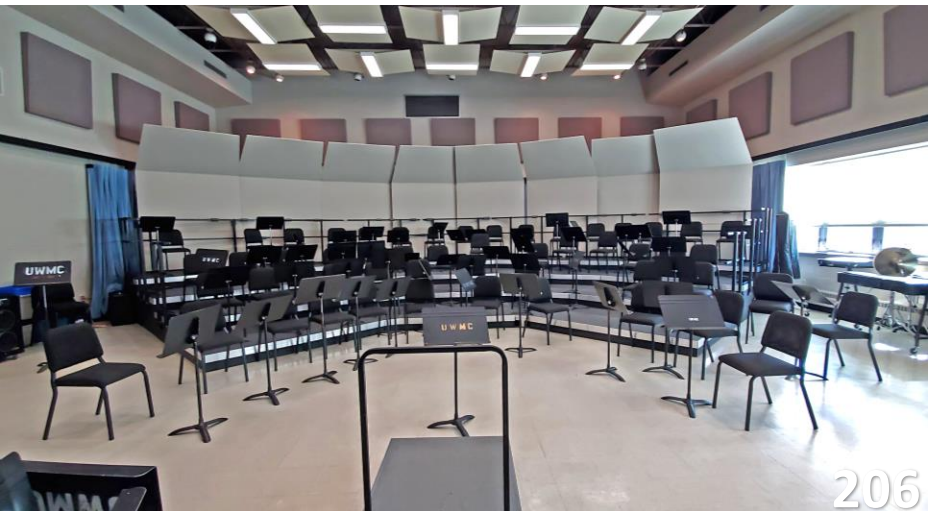


# 206

## Band/Choir Room

**1,906 Total SqFt.**

- 80 Seating Capacity
- Four Platform Tiers
  - 4ft depth
  - 8", 16", 24", 32" Heights
- Adjustable Acoustic Curtains
- 8 Orchestra Shell Sections
- Built-in Stereo Audio Recording & Playback



# Greenhouse

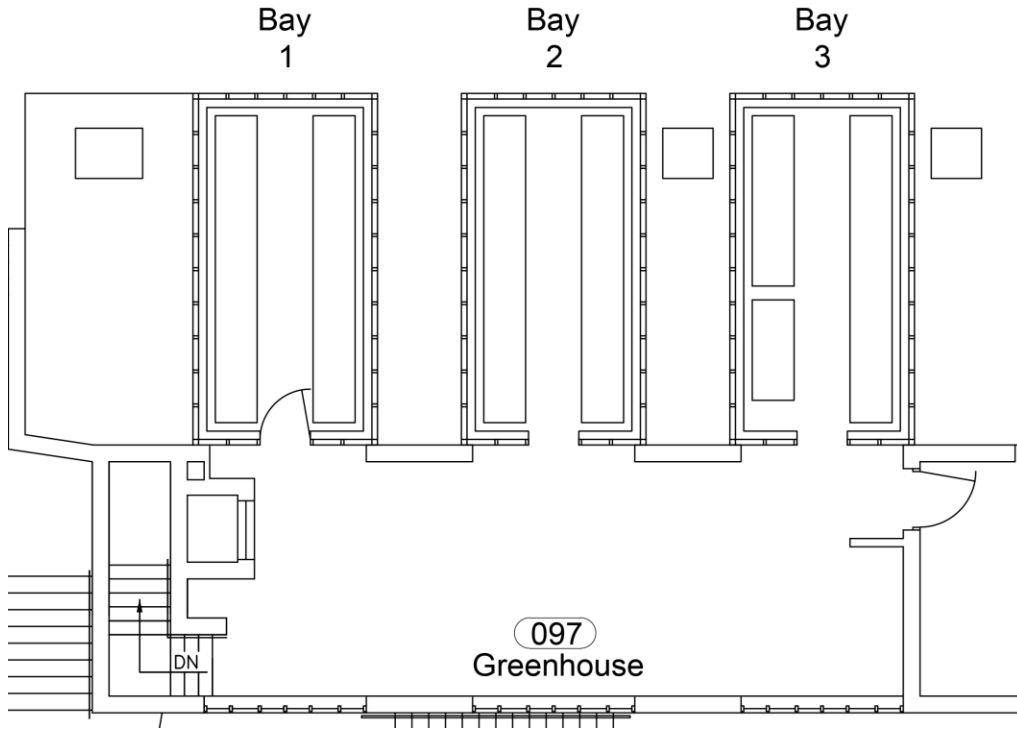
518 S. 7<sup>th</sup> Ave., Wausau, Wis.



# Greenhouse

**1,130 Total SqFt.**

- 097 Greenhouse – 590 SqFt.
  - Outside Access from West Alleyway
- Bay 1 – 180 SqFt.
- Bay 2 – 180 SqFt.
- Bay 3 – 180 SqFt.





Bay 1



Bay 2



Bay 3



097

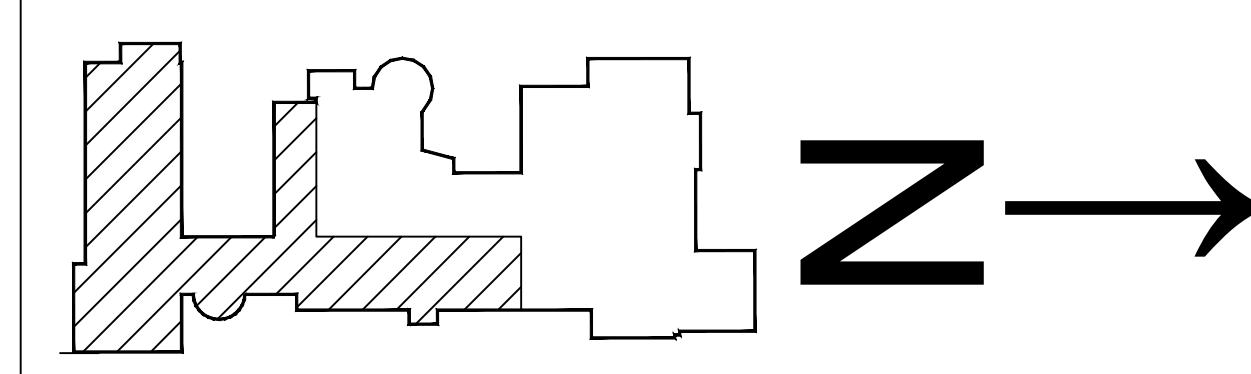
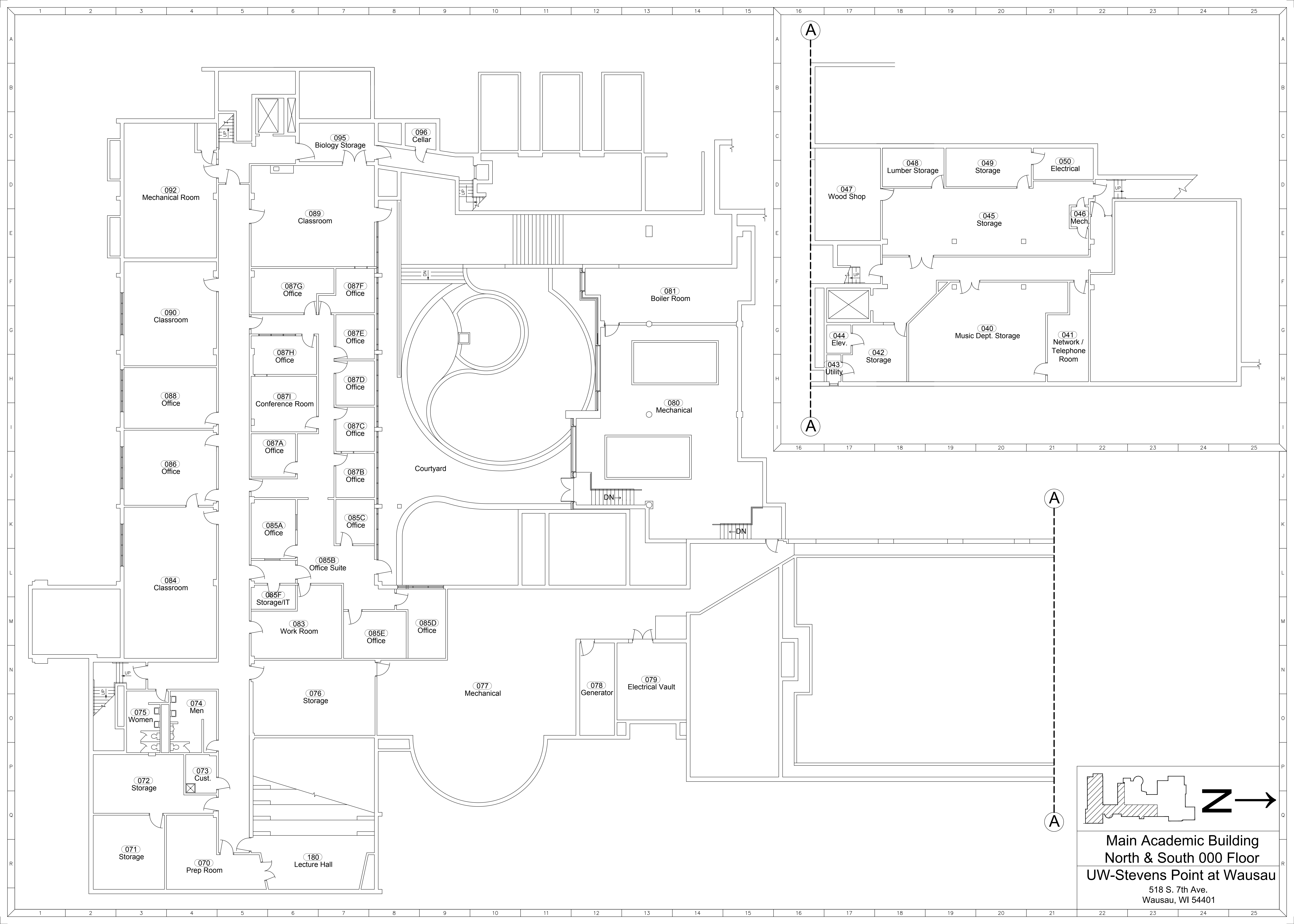


097

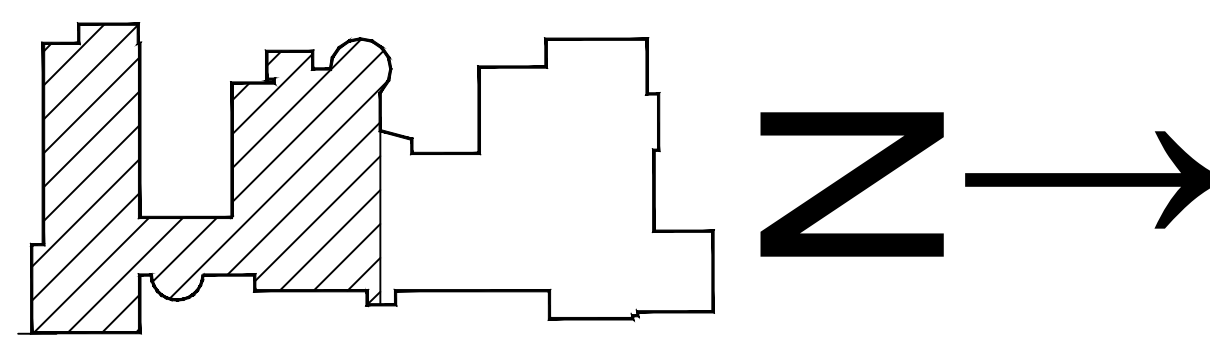
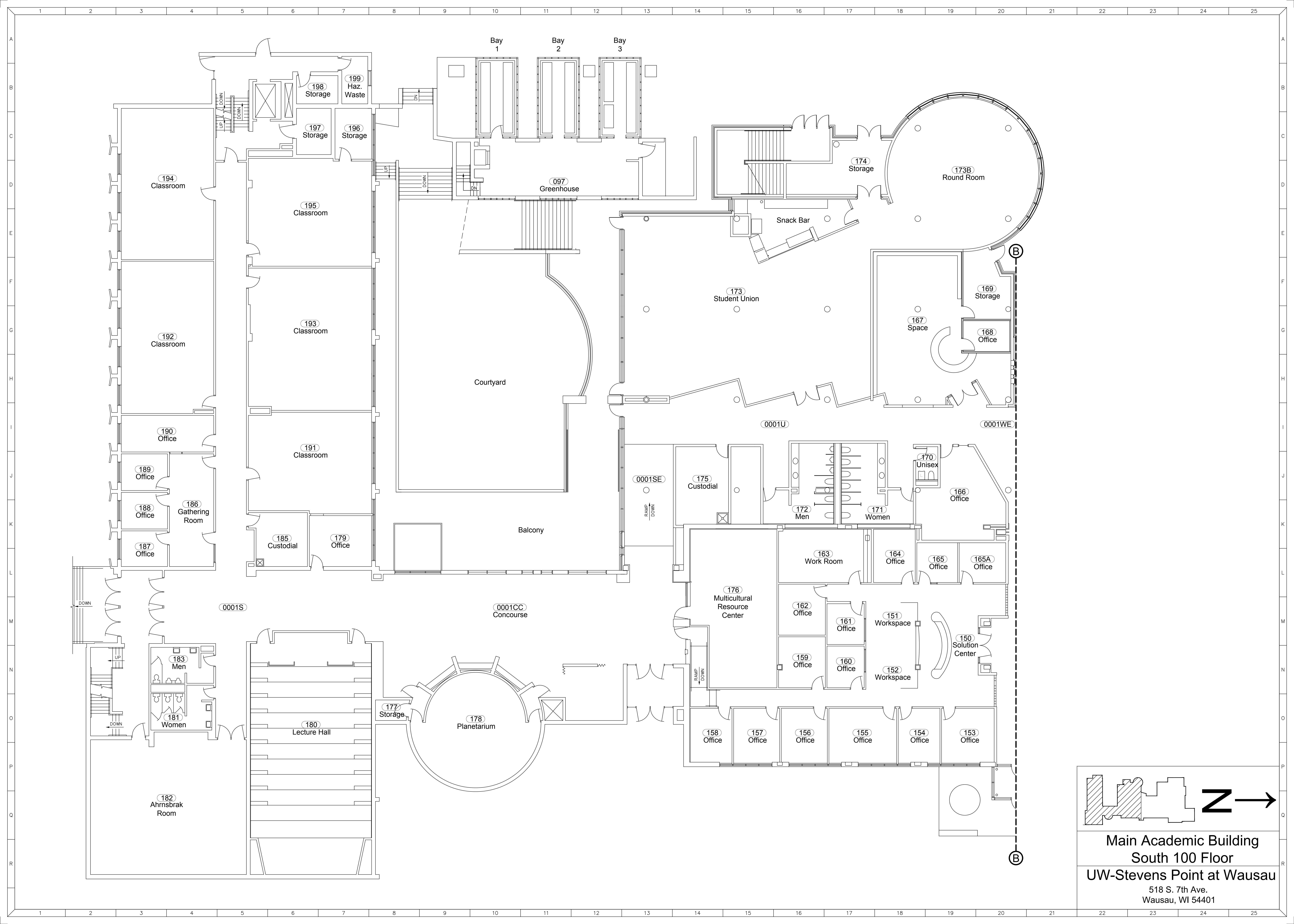
# South Hall

518 S. 7<sup>th</sup> Ave., Wausau, Wis.

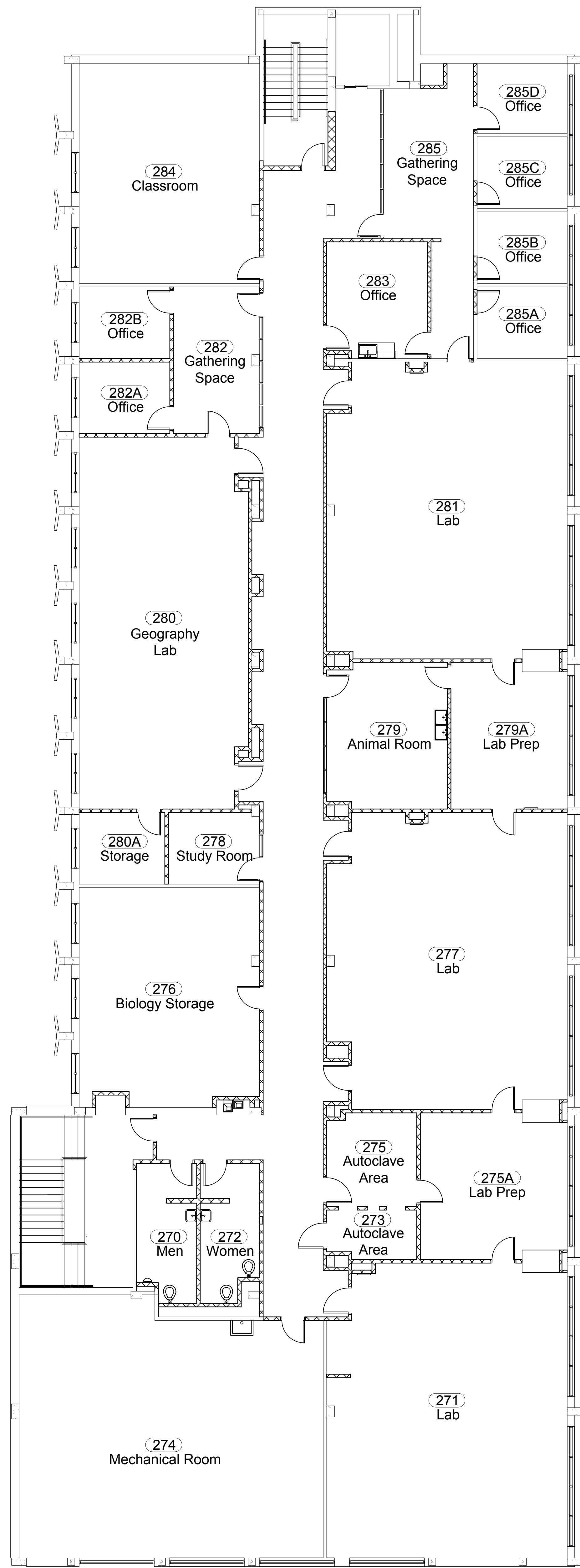




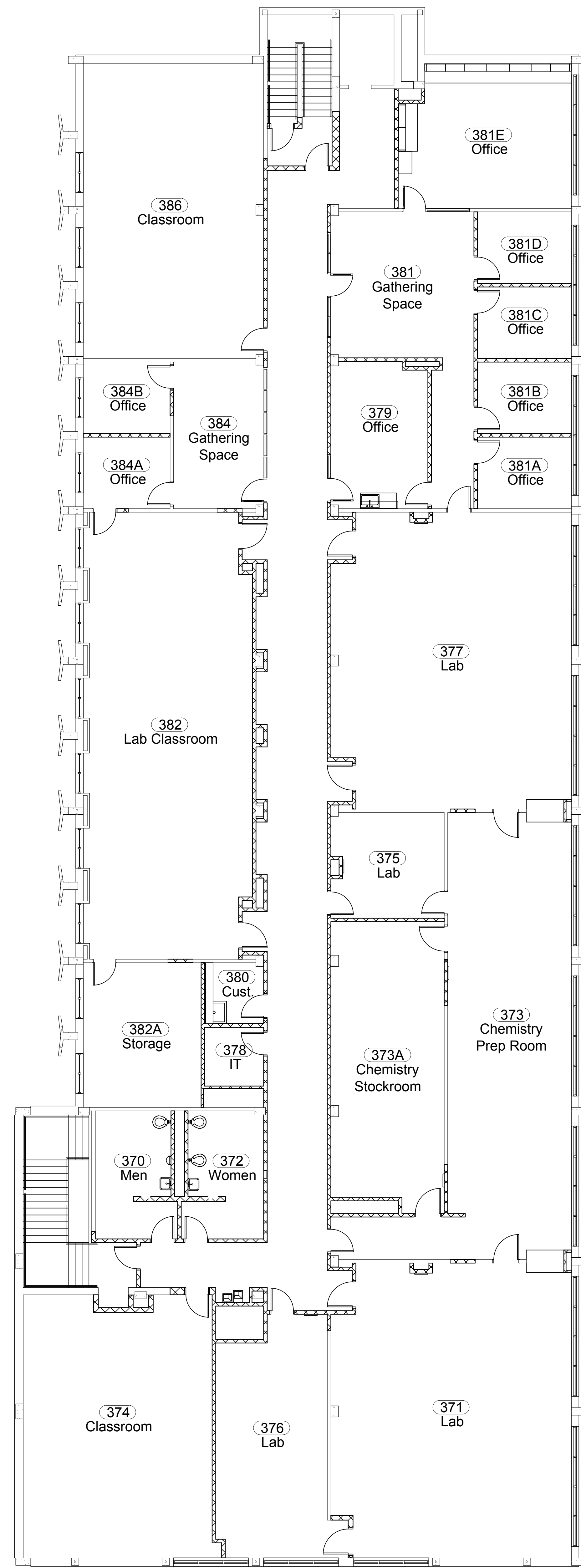
**Main Academic Building**  
**North & South 000 Floor**  
**UW-Stevens Point at Wausau**  
518 S. 7th Ave.  
Wausau, WI 54401



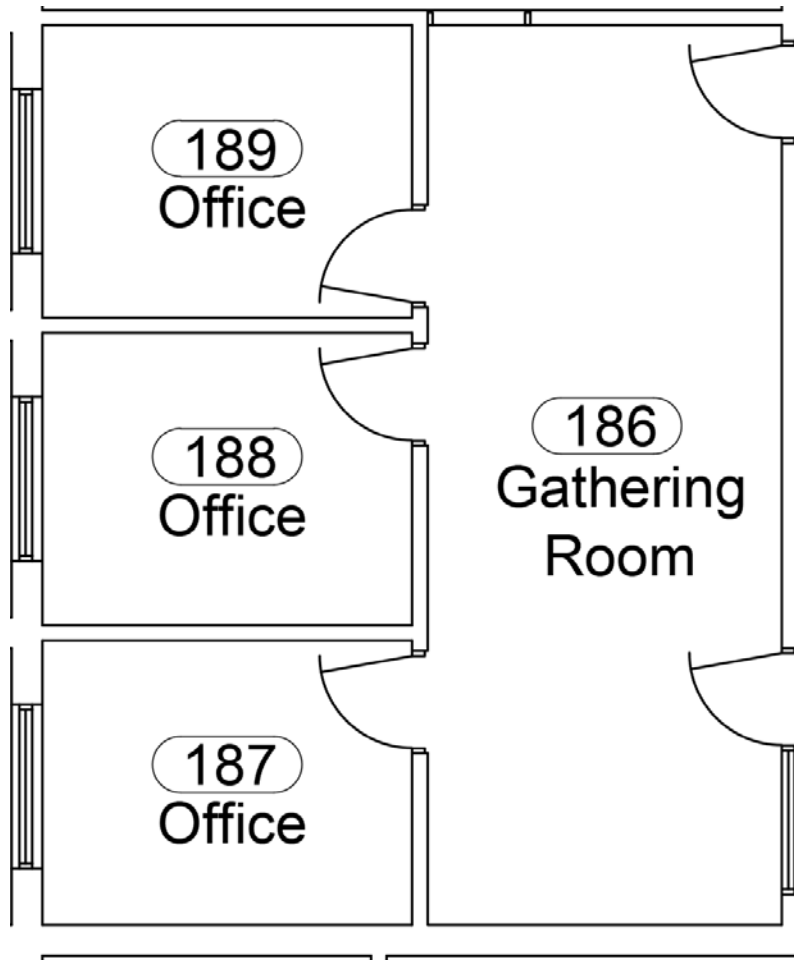
**Main Academic Building**  
**South 100 Floor**  
**UW-Stevens Point at Wausau**  
518 S. 7th Ave.  
Wausau, WI 54401



**Main Academic Building**  
**South 200 Floor**  
**UW-Stevens Point at Wausau**  
 518 S. 7th Ave.  
 Wausau, WI 54401



**Main Academic Building**  
**South 300 Floor**  
**UW-Stevens Point at Wausau**  
 518 S. 7th Ave.  
 Wausau, WI 54401



# 186 Office Suite

**675 Total SqFt.**

- 186 Gathering Room – 336 SqFt.
- 187 Office – 111 SqFt.
- 188 Office – 114 SqFt.
- 189 Office – 114 SqFt.



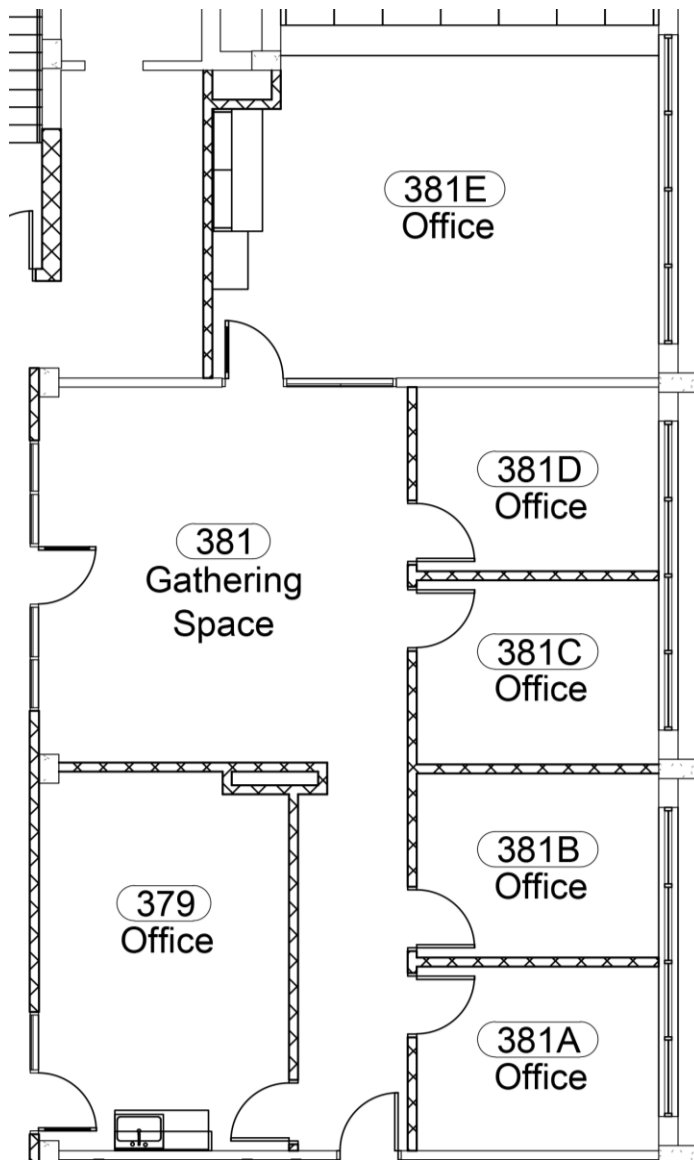
186



188



189



# 381 Office Suite

**1,628 Total SqFt.**

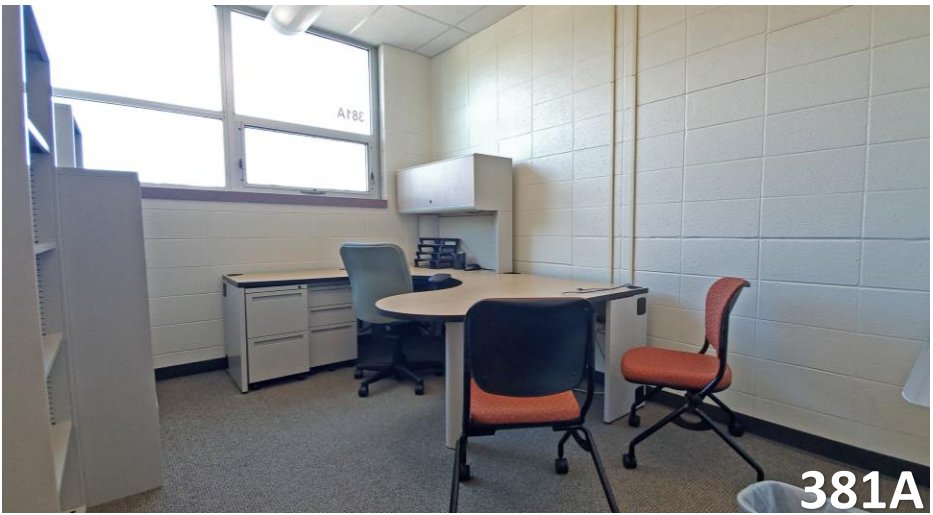
- 379 Office – 247 SqFt.
  - Includes Kitchenet
- 381 Gathering Space – 480 SqFt.
- 381A Office – 119 SqFt.
- 381B Office – 119 SqFt.
- 381C Office – 119 SqFt.
- 381D Office – 119 SqFt.
- 381E Office – 425 SqFt.



379



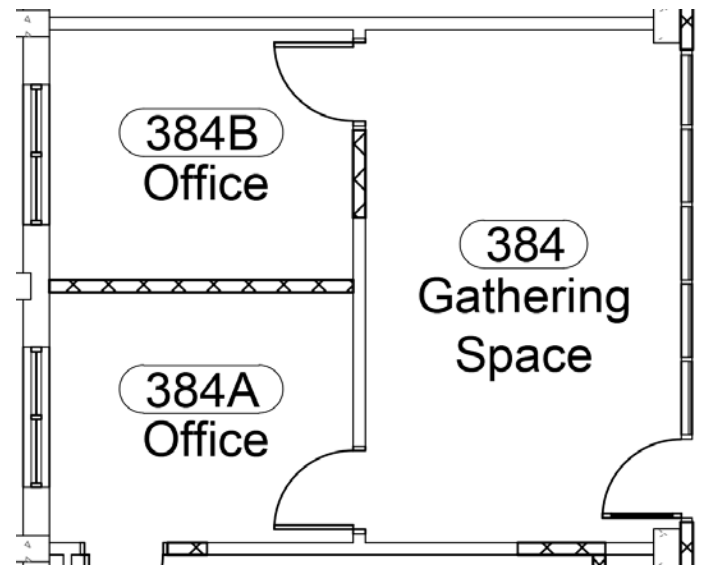
381



381A



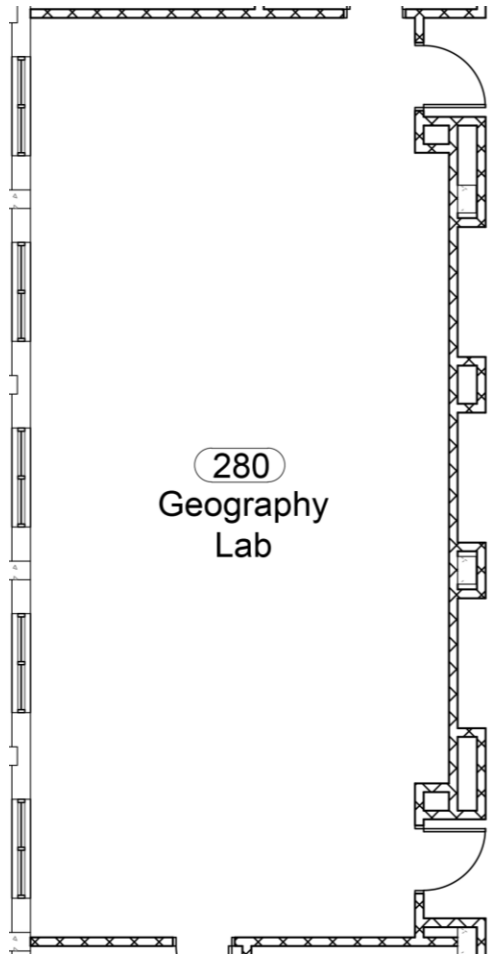
381



# 384 Office Suite

**452 Total SqFt.**

- 384 Gathering Space – 232 SqFt.
- 384A Office – 110 SqFt.
- 384B Office – 110 SqFt.



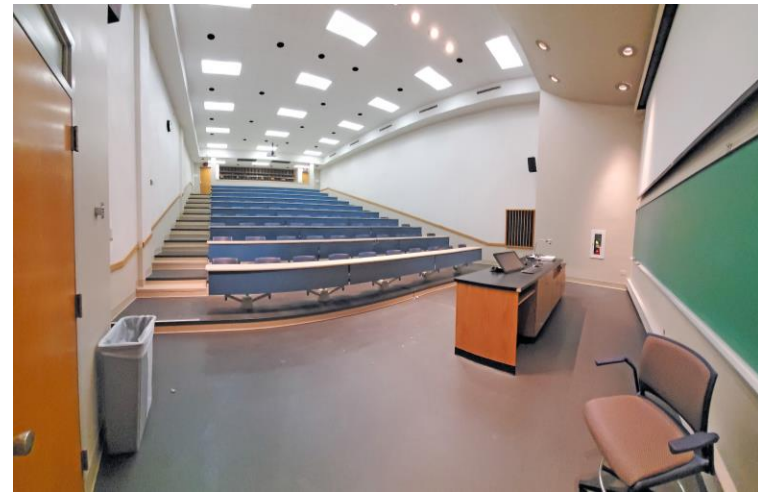
# 280 Geography Lab

**1,084 Total SqFt.**  
**40 Seating Capacity**

# 180

## Lecture Hall

1,878 Total SqFt.

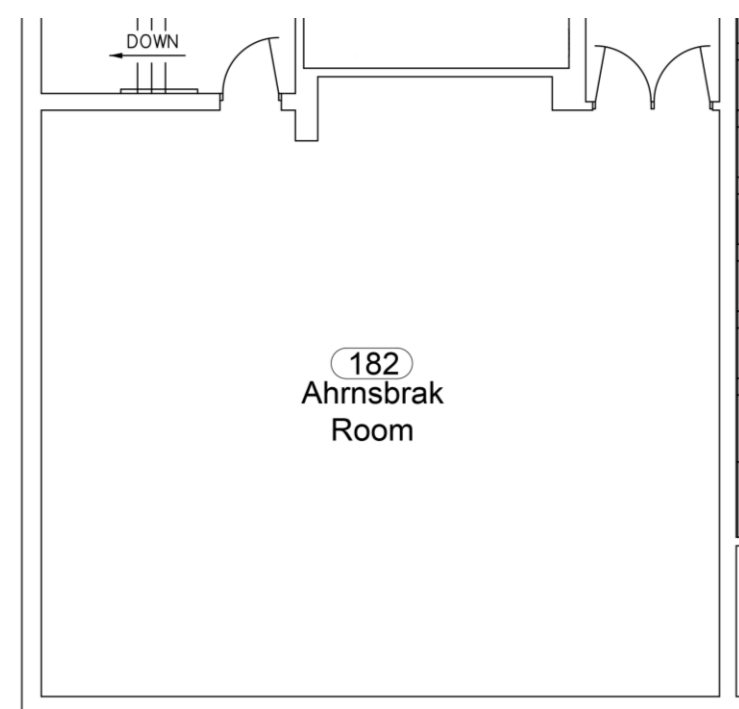


- 106 Seating Capacity
- Large Projection Screen
- Chalk Board

180  
Lecture Hall

# 182 Ahrnsbrak Room

**1,443 Total SqFt.**



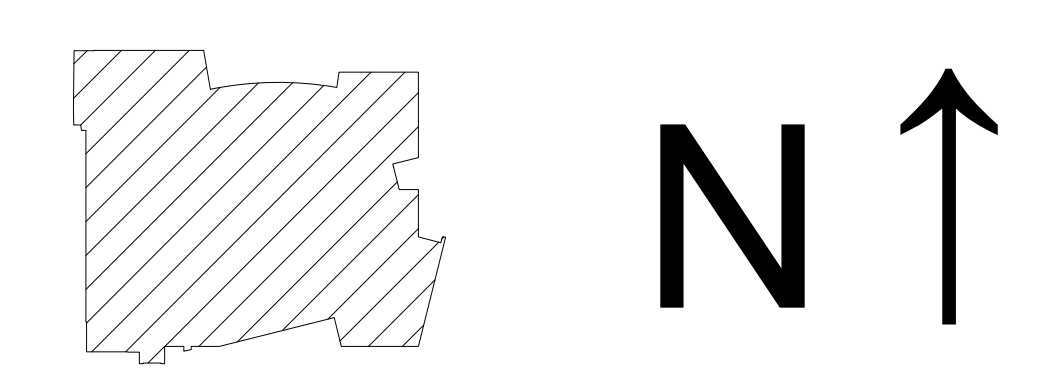
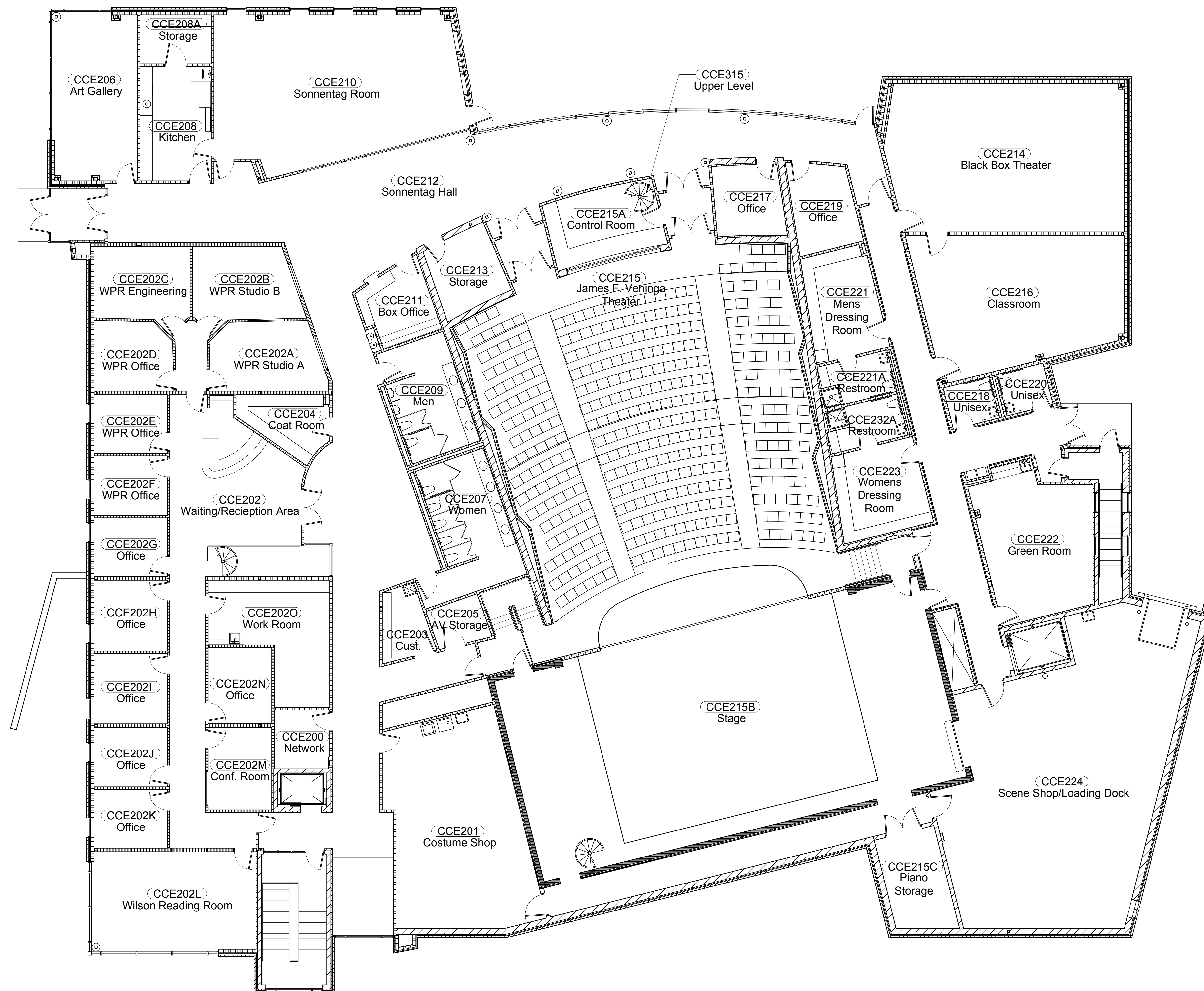
- Projection Screen
- Track Lighting for Wall Displays
- Double Door Entrance from South Hall



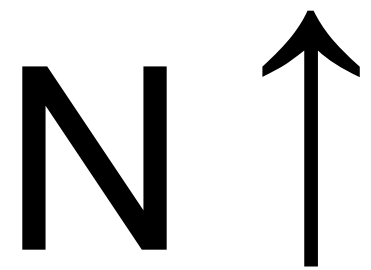
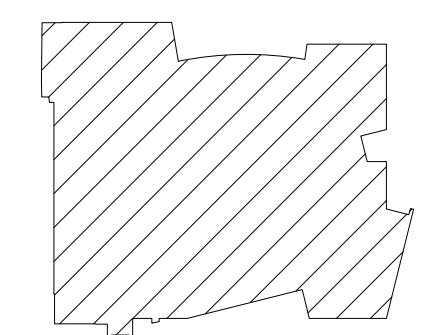
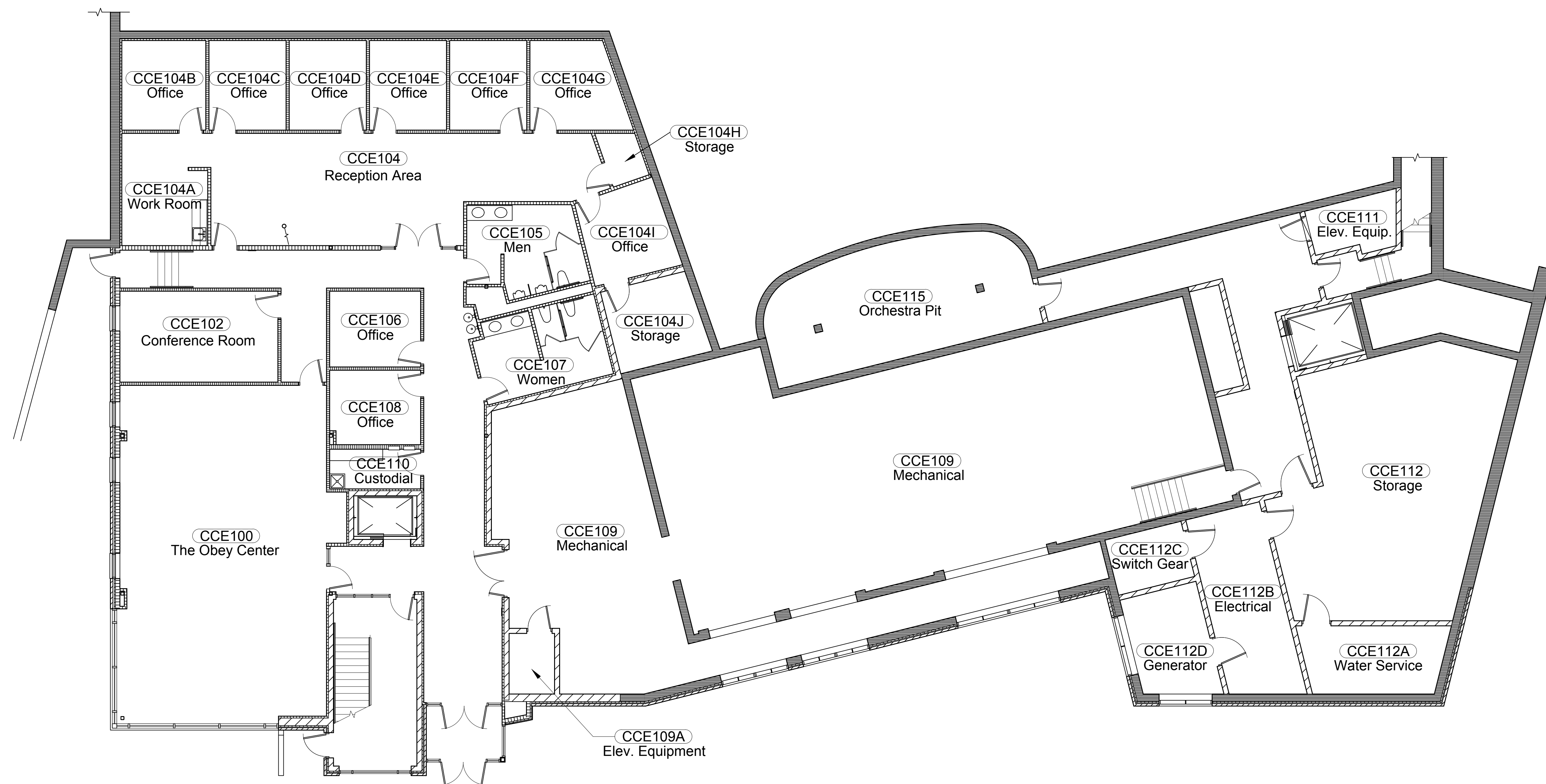
# UW Center for Civic Engagement

625 Stewart Ave., Wausau, Wis.





UW Center for Civic Engagement  
 200 Floor  
 UW-Stevens Point at Wausau  
 518 S. 7th Ave.  
 Wausau, WI 54401



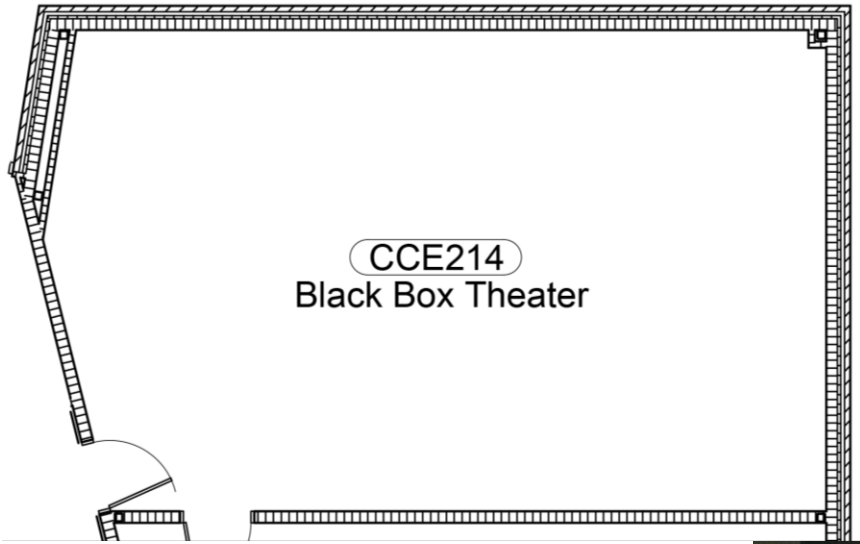
UW Center for Civic Engagement  
100 Floor

UW-Stevens Point at Wausau  
518 S. 7th Ave.  
Wausau, WI 54401

# CCE 215 Veninga Theater

- 366 Seating Capacity
- Dressing Rooms
- Green Room
- Scene Shop/Loading Dock





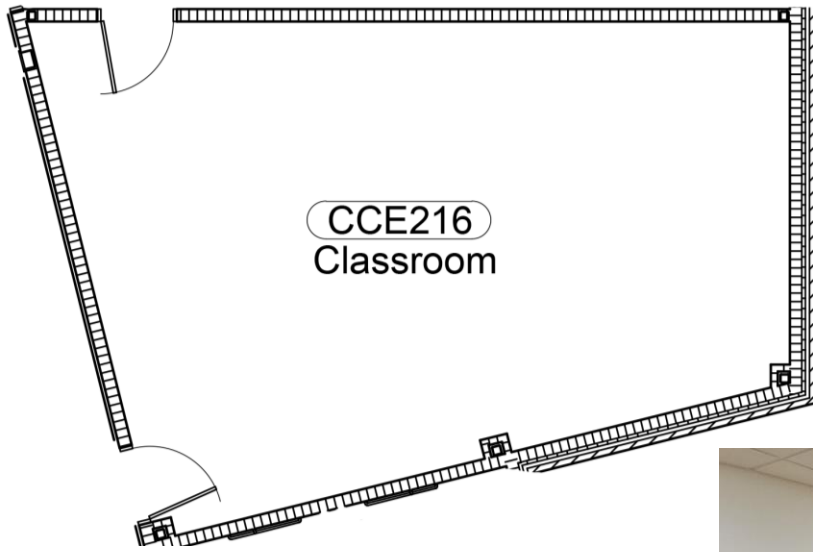
# CCE 214

## Black Box Theater

958 Total SqFt.

- 50 Seating Capacity
- Large Projection Screen
- Flexible Space
- Adjustable Acoustic Curtains
- Black Epoxy Floor





# CCE 216 Classroom

715 Total SqFt.

- 32 Seating Capacity
- Projection Dry Erase Board



# East Art Studio

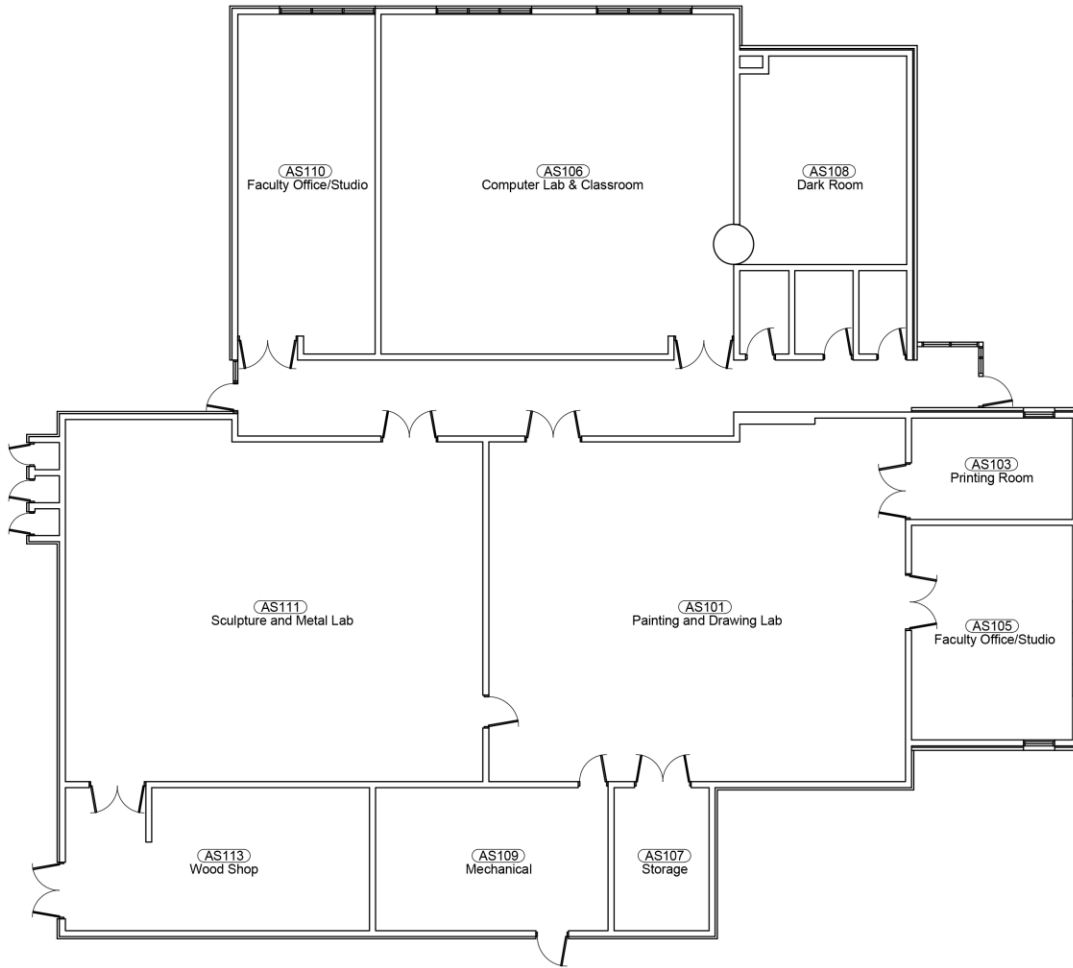
620 S. 7<sup>th</sup> Ave., Wausau, Wis.



# East Art Studio

**9,037 Total SqFt.**

**8,119 Useable SqFt.**



- AS101 Painting & Drawing Lab
  - AS103 Printing Room
  - AS105 Faculty Office/Studio
  - AS107 Storage
- AS111 Sculpture & Metal Lab
  - AS113 Wood Shop
- AS106 Computer Lab & Classroom
  - AS108 Dark Room
- AS110 Faculty Office Studio

# AS101 Printing & Drawing Lab



**1,814 SqFt.**

- Direct Northern Exposure  
Natural Light
- Sealed Concrete Floor
- Florescent Lighting and  
Dimmable Incandescent  
Track Lights
- 4 Utility Sinks
- Computer Projector &  
Screen
- 170 SqFt. Storage Room

# AS103 Printing Room



**205 SqFt.**

- Direct Northern Exposure  
Natural Light Window
- Sealed Concrete Floor

# AS105 Faculty Office/Studio



**432 SqFt.**

- Direct East & Southern Exposure Natural Light
- Sealed Concrete Floor
- Florescent Lighting
- Utility Sink

# AS106 Computer Lab & Classroom



**1,483 SqFt.**

- Direct & Indirect Northern Exposure Natural Light
- Sealed Concrete Floor
- Florescent Lighting & LED Can Lights
- 2 Utility Sinks
- Computer Projector & Screen
- Air Conditioning
- Power Strips along North & South Walls
- Entrance to AS108 Dark Room

# AS110 Faculty Office/Studio



**568 SqFt.**

- Sealed Concrete Floor
- Florescent Lighting
- Northern Exposure Windows

# AS111 Sculpture & Metal Lab



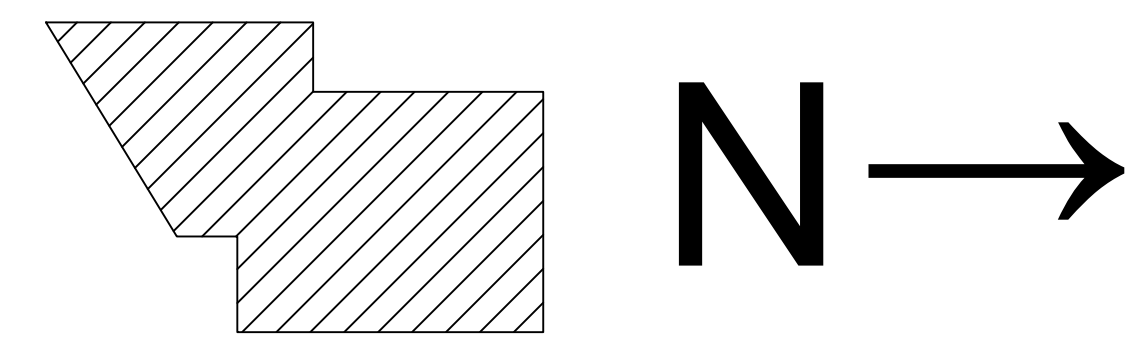
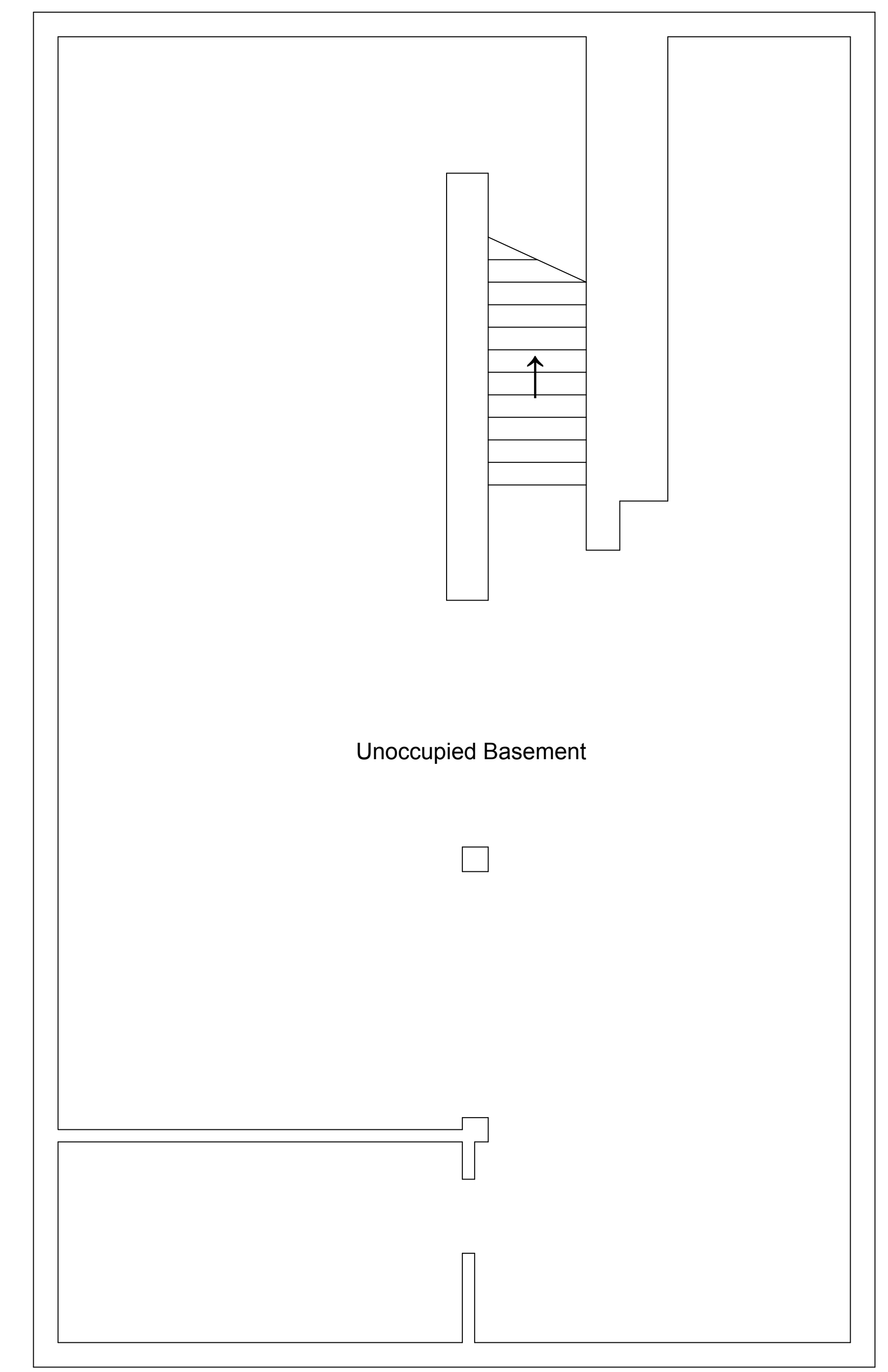
**1,820 SqFt.**

- Direct Northern Exposure  
Natural Light
- Large Double Utility Sink
- Floor & Wall Power Outlets
- Welding Area with
  - Plumbed Supply Lines for
    - Acetylene
    - Oxygen
    - Propane
    - Compressed Air
  - Originally Wired for
    - 200A Tig Welder
    - 70A Mig Welder
    - 100A Arc Welder
    - 90A Plasma Cutter
    - 90A Spot Welder
    - 3 Portable Welders
  - 3 Articulated Welding Fume Extractors

# West Art Studio

626-A S. 7th Ave., Wausau, Wis.





**West Art Shop**  
**Main Floor & Basement**  
**UW-Stevens Point at Wausau**  
 626 S. 7th Ave.  
 Wausau, WI 54401



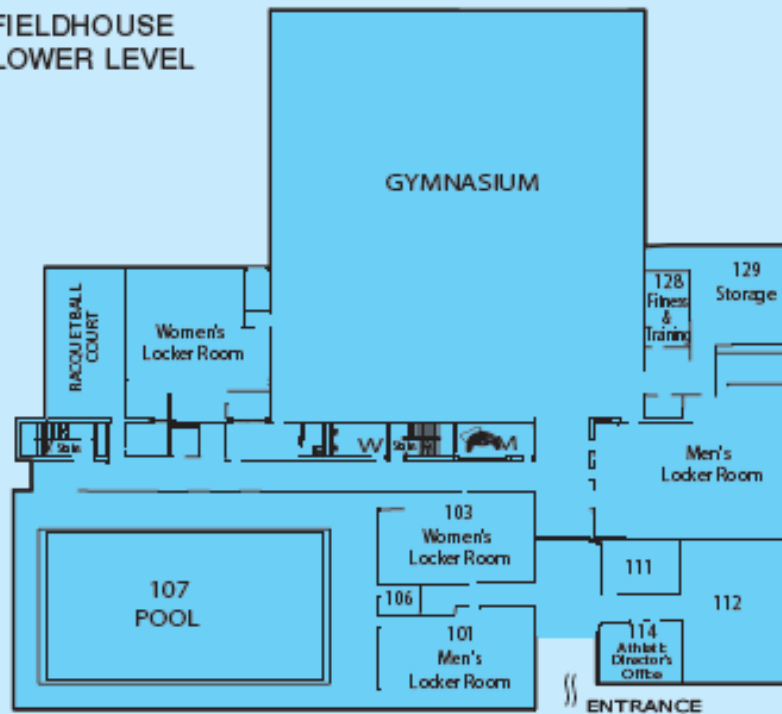


# Fieldhouse

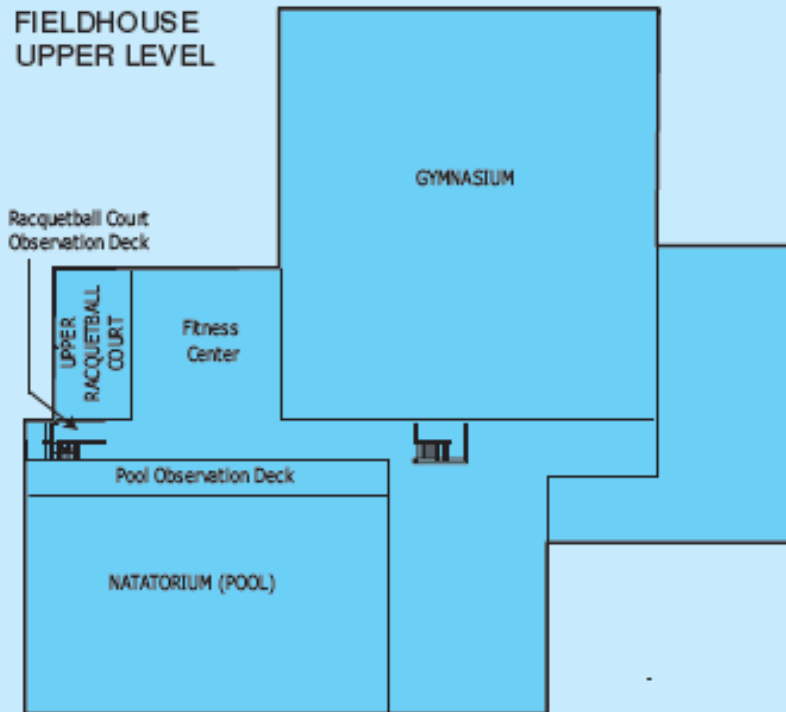
608 S. 7th Ave., Wausau, WI



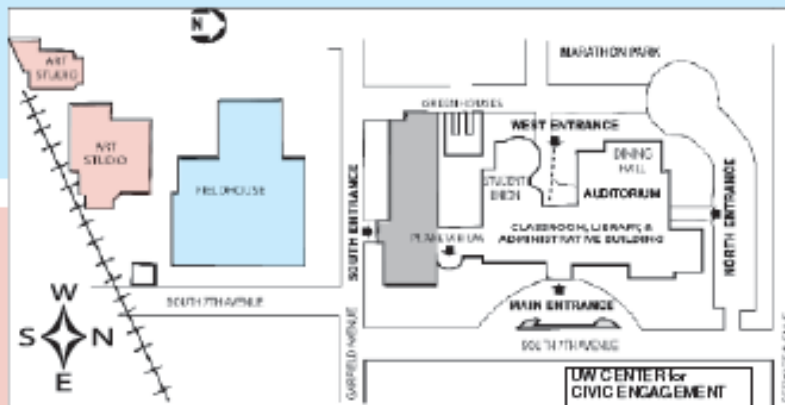
FIELDHOUSE LOWER LEVEL



FIELDHOUSE UPPER LEVEL



**FIELDHOUSE**



LOW CENTER for CIVIC ENGAGEMENT





# Residence Hall

615 Garfield Street, Wausau, WI





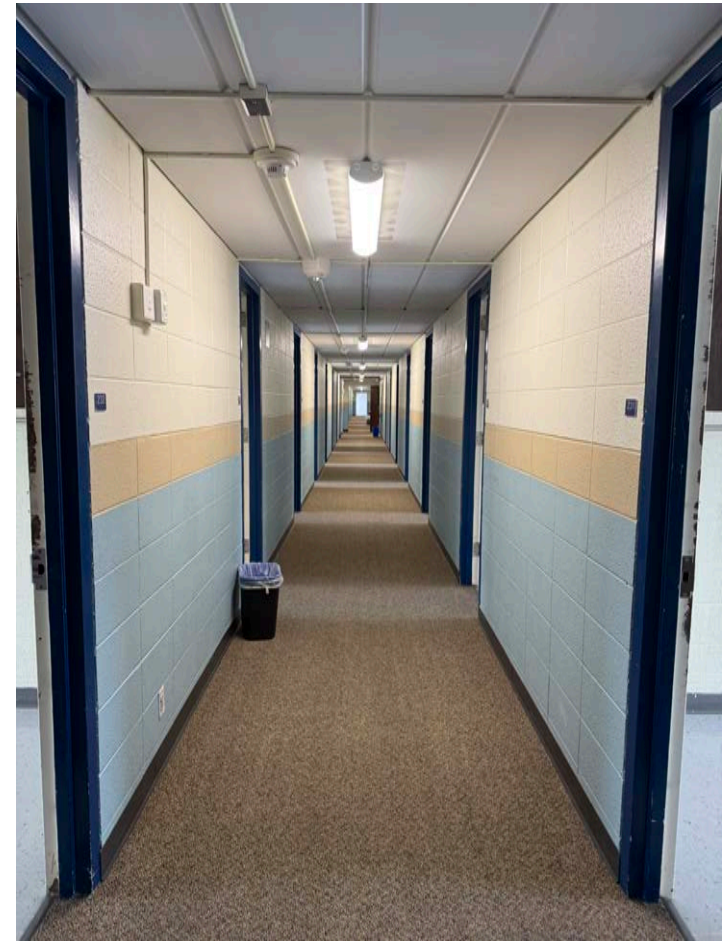


Dorm Room

Mail Room



Hall



## Kitchenettes and Office



## Laundry Rooms



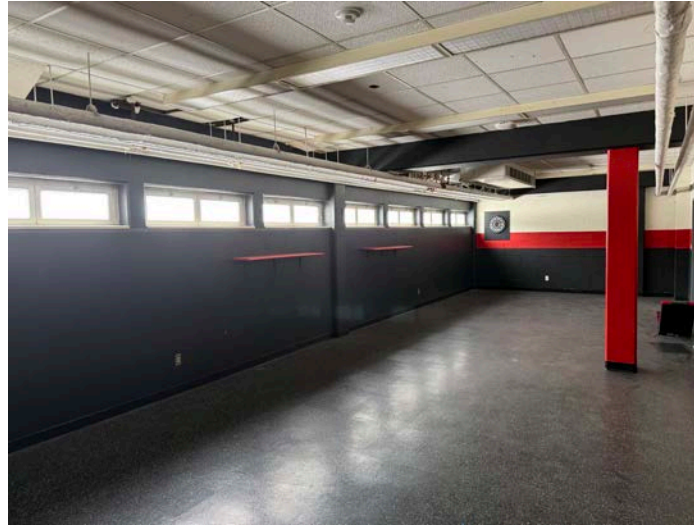
## Offices



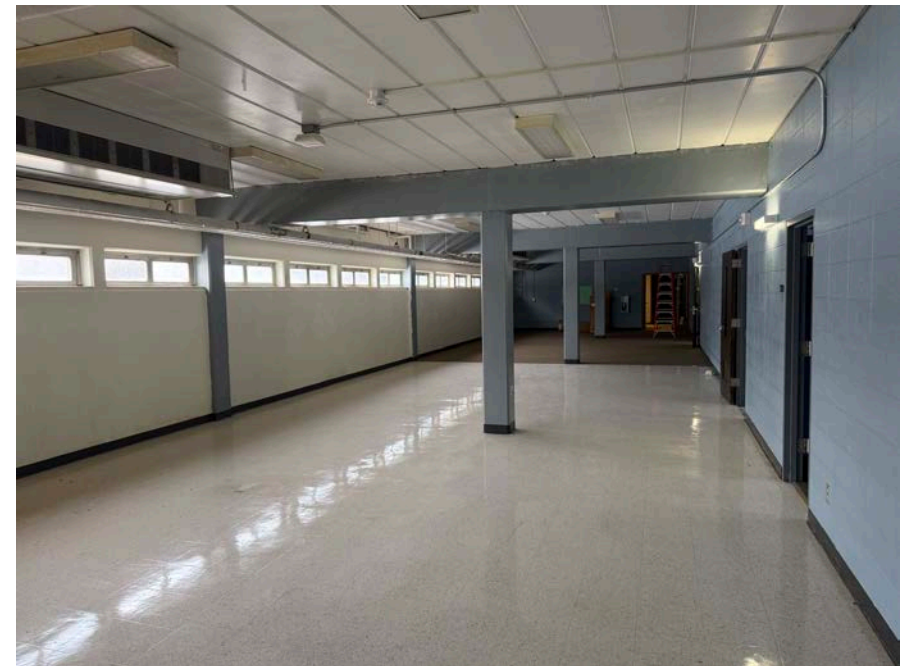
## Mechanical Room



# Elevator



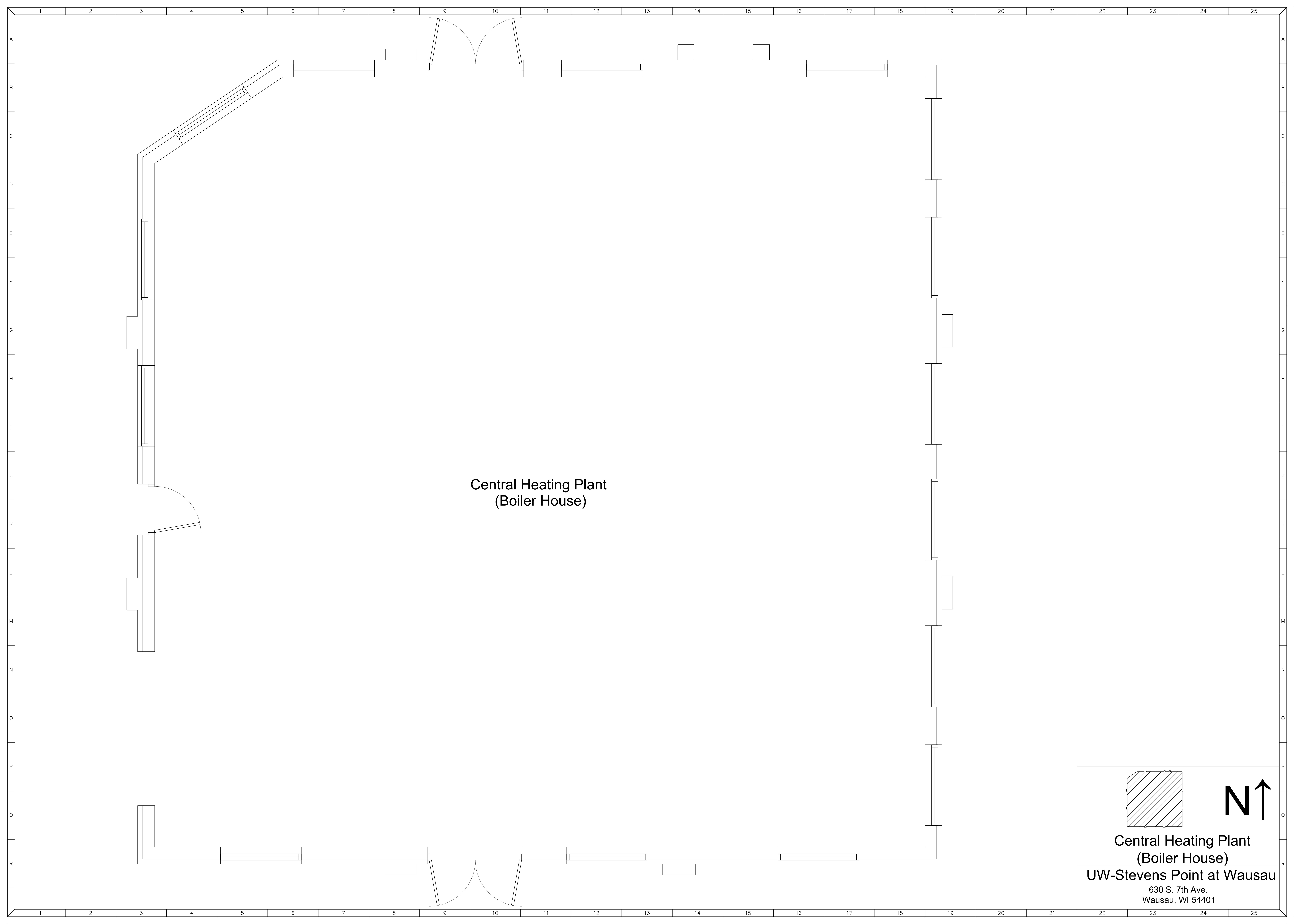
# Basement Lounges, Gameroom & Storage



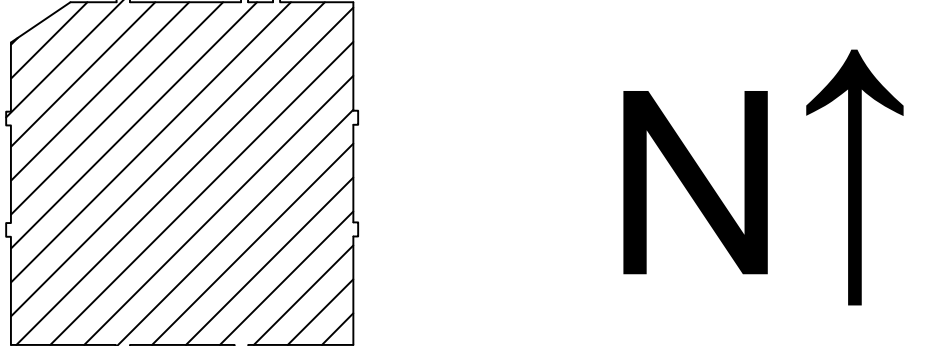
# Heating Plant

630 N 7th St. Wausau, WI





Central Heating Plant  
(Boiler House)


<b>Central Heating Plant (Boiler House)</b>
<b>UW-Stevens Point at Wausau</b> 630 S. 7th Ave. Wausau, WI 54401

