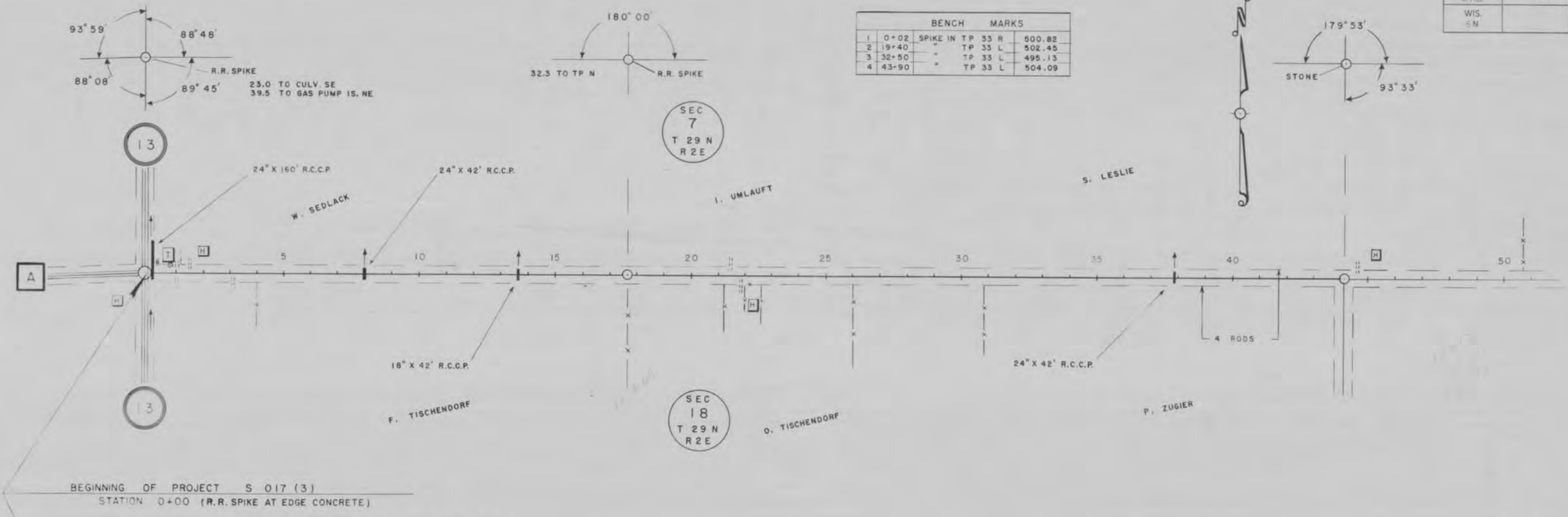
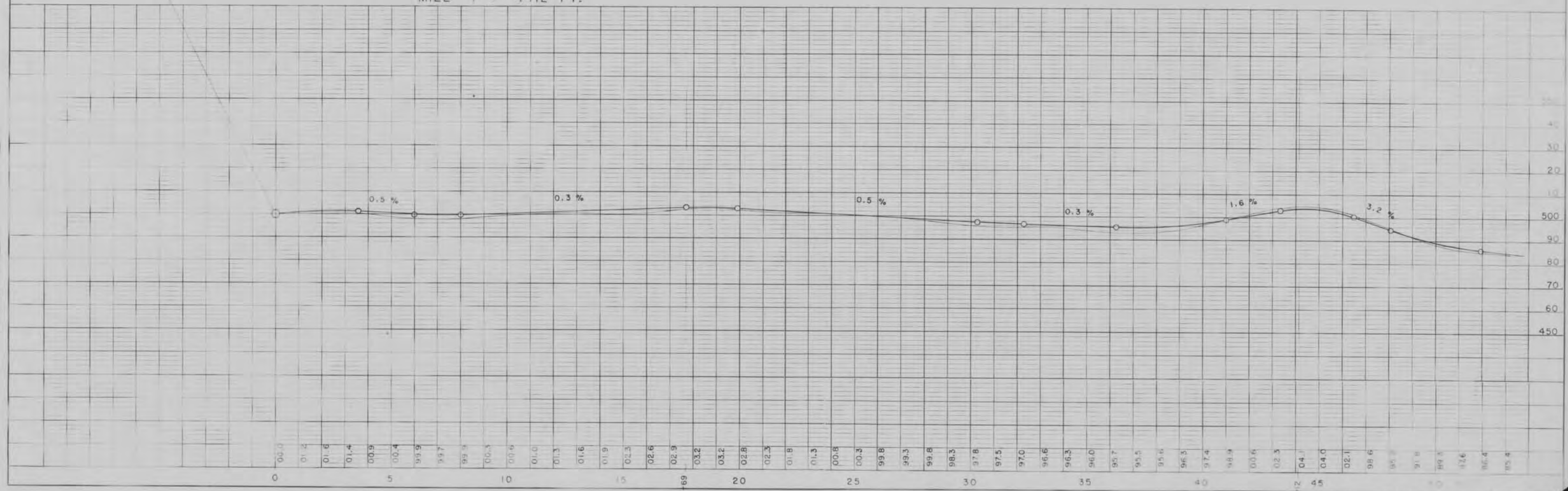


BENCH MARKS			
1	0+02	SPIKE IN TP 33 R	500.82
2	19+40	" TP 33 L	502.45
3	32+50	" TP 33 L	495.13
4	43+90	" TP 33 L	504.09



BEGINNING OF PROJECT S 017 (3)
STATION 0+00 (R.R. SPIKE AT EDGE CONCRETE)

MILE 1 = 4412 FT.

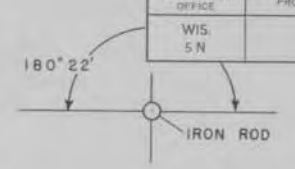
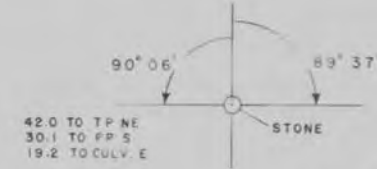
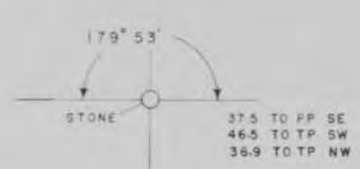


PLAN
DATE 2-29-59
BY S.E.C.
CHECKED BY S.E.C.
NOTED BY S.E.C.

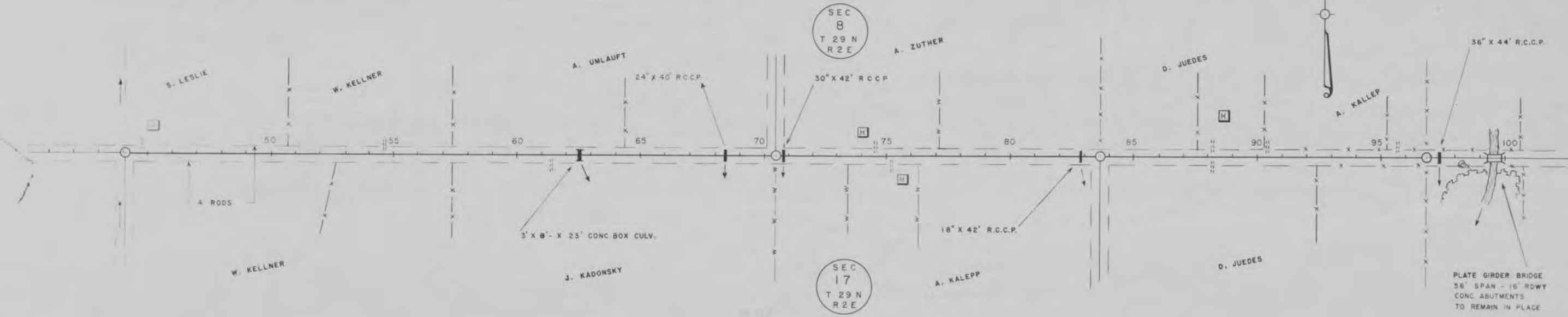
PROFILE
DATE 2-29-59
BY S.E.C.
CHECKED BY S.E.C.
NOTED BY S.E.C.

F.A.A. DISTRICT OFFICE	PROJECT	SHEET NUMBER	TOTAL SHEETS
WIS. 5N		4	9

BENCH MARKS			
5	64+00	SPIKE IN PP 33'R	473.40
6	80+50	TP 33'L	473.34
7	95+50	PP 33'R	457.69

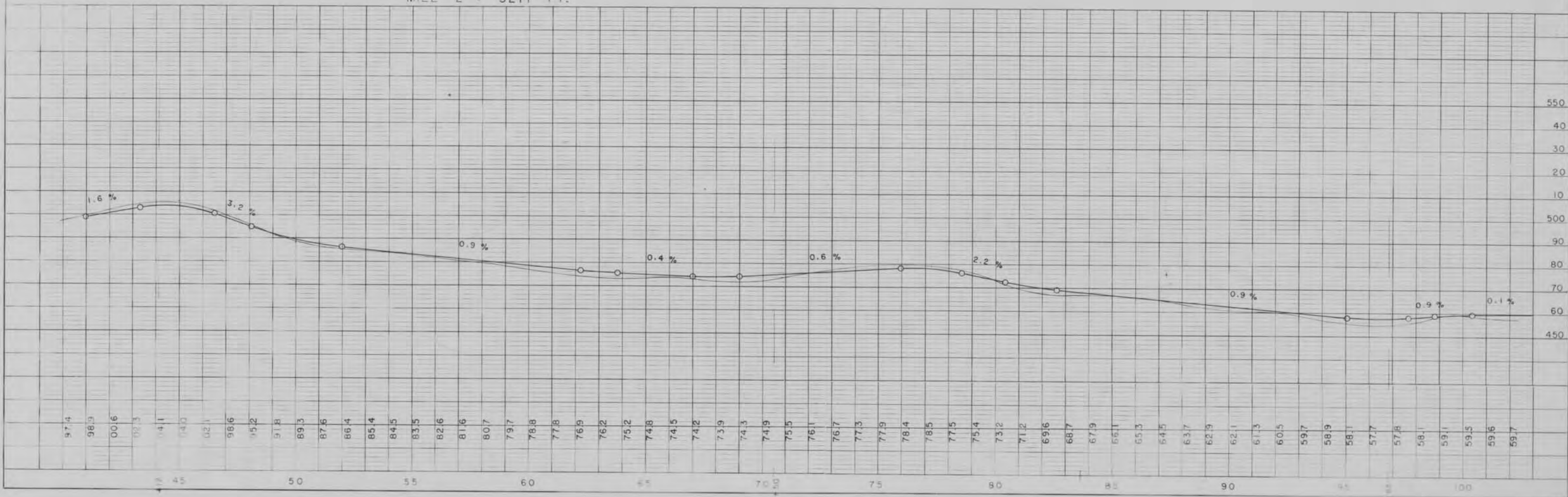


PLAN
 DATE
 DRAWN BY
 CHECKED BY
 APPROVED BY



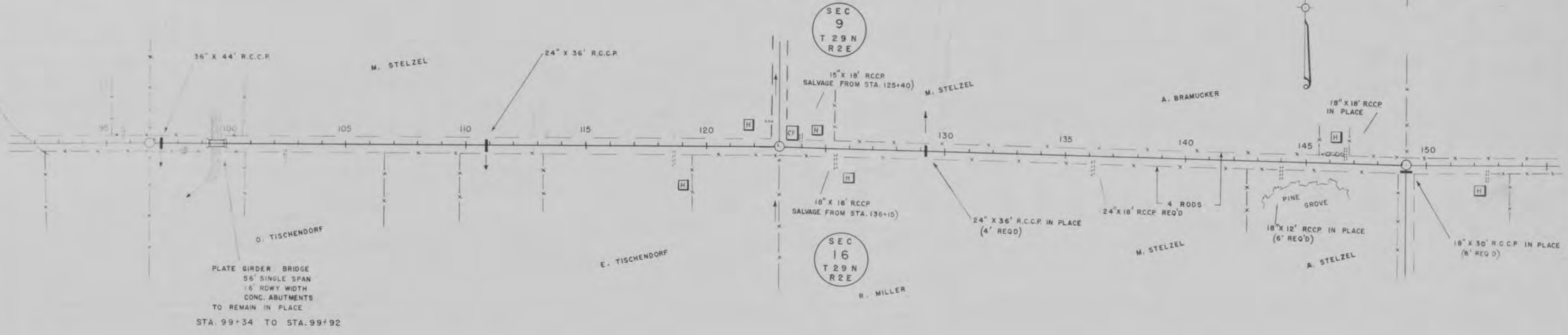
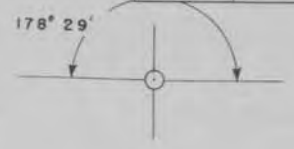
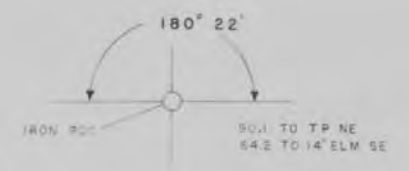
MILE 2 = 5271 FT.

PROFILE
 DATE
 DRAWN BY
 CHECKED BY
 APPROVED BY

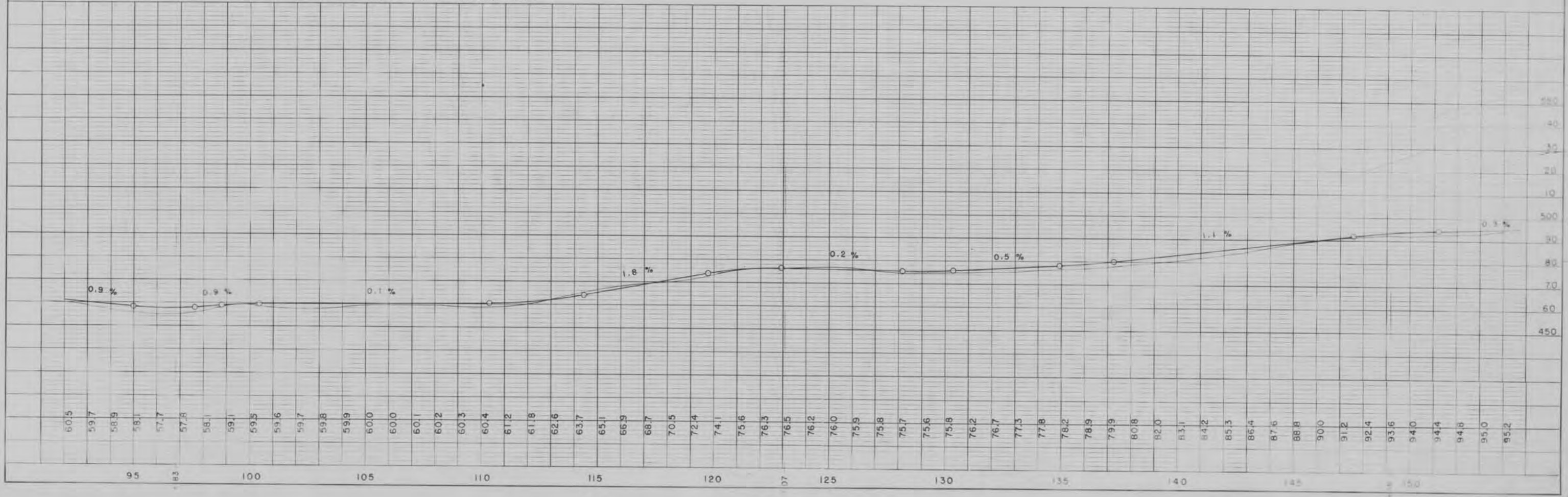


P.R.A. DISTRICT OFFICE	PROJECT	SHEET NUMBER	TOTAL SHEETS
WIS 5 N		5	9

BENCH MARKS				
8	102+88	SPIKE IN	PP 33' R	457.55
9	123+29	"	PP 33' R	476.54
10	144+50	"	10" PINE 50' R	488.51



MILE 3 = 5233 FT.

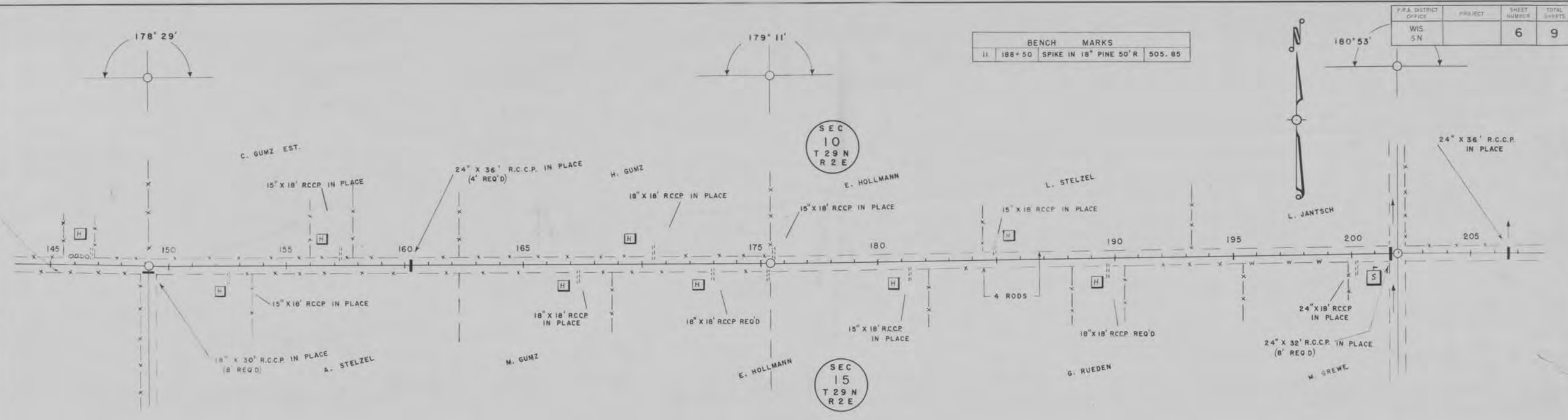


PROFILE	SURVEYED	PLACED	DATE
			1-49

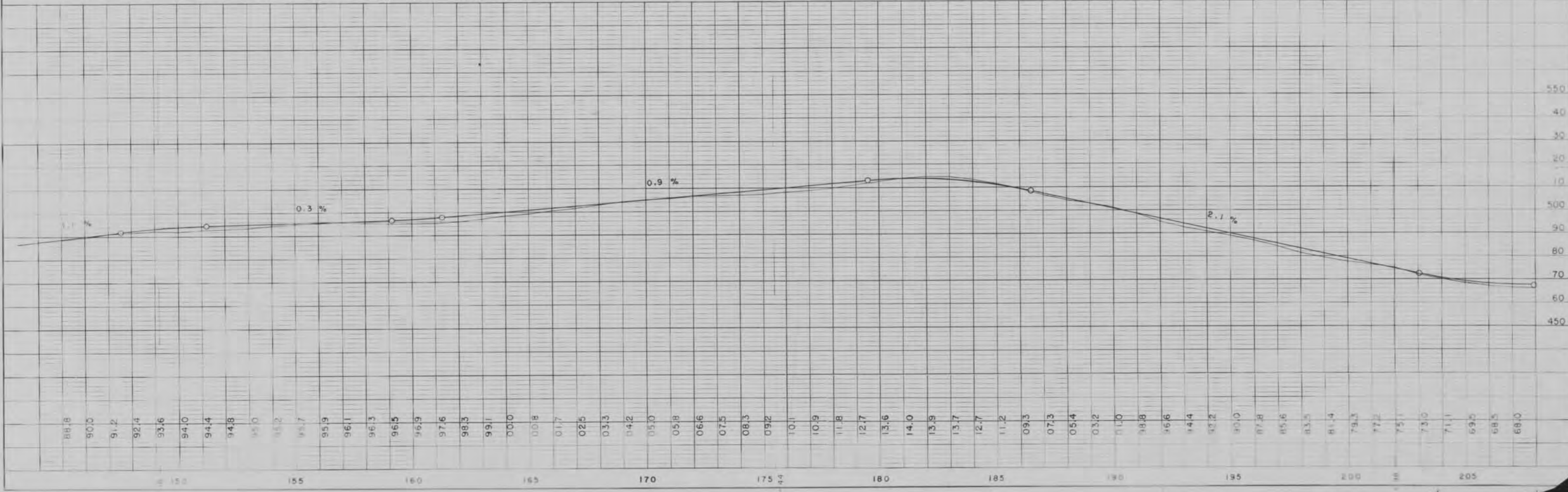
PLAN	REVISED	DATE

P.A. DISTRICT OFFICE	PROJECT	SHEET NUMBER	TOTAL SHEETS
WIS 5N		6	9

BENCH MARKS		
11	188+50	SPIKE IN 18" PINE 50' R 505.85



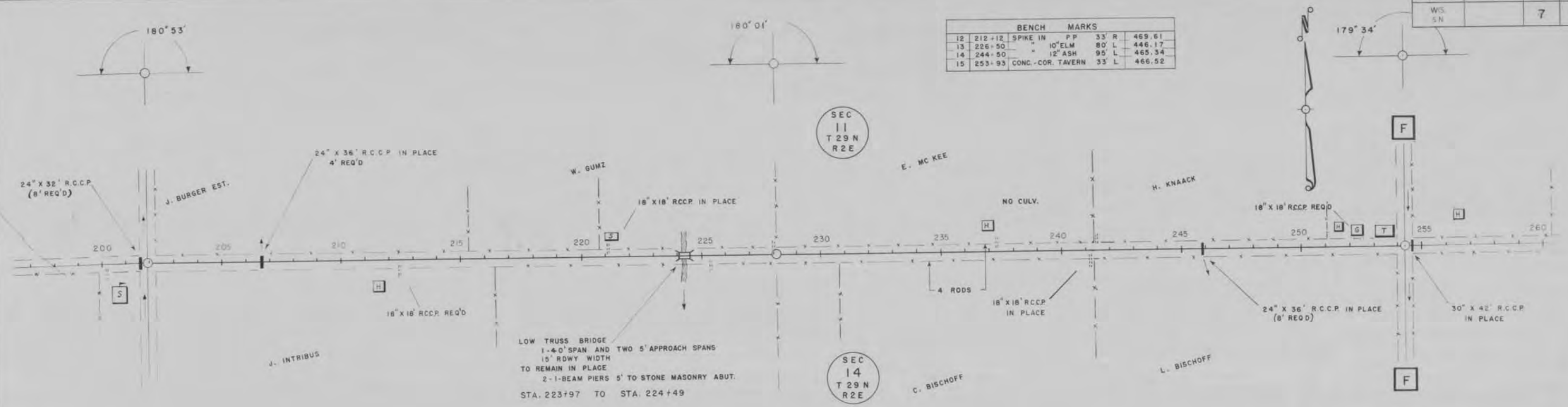
MILE 4 = 5282 FT.



PLAN
 SURVEYED BY G. E. C.
 PLOTTED BY G. E. C.
 NOTE BOOK NO. 101-101
 DATE 1-1-1910

PROFILE
 SURVEYED BY G. E. C.
 PLOTTED BY G. E. C.
 NOTE BOOK NO. 101-101
 DATE 1-1-1910

BENCH MARKS					
12	212+12	SPIKE IN	PP	33' R	469.61
13	226+50	"	10" ELM	80' L	446.17
14	244+50	"	12" ASH	95' L	465.34
15	253+93	CONC. - COR. TAVERN		33' L	466.52



MILE 5 = 5229 FT.



PLAN
 DRAWN BY
 CHECKED BY
 DATE

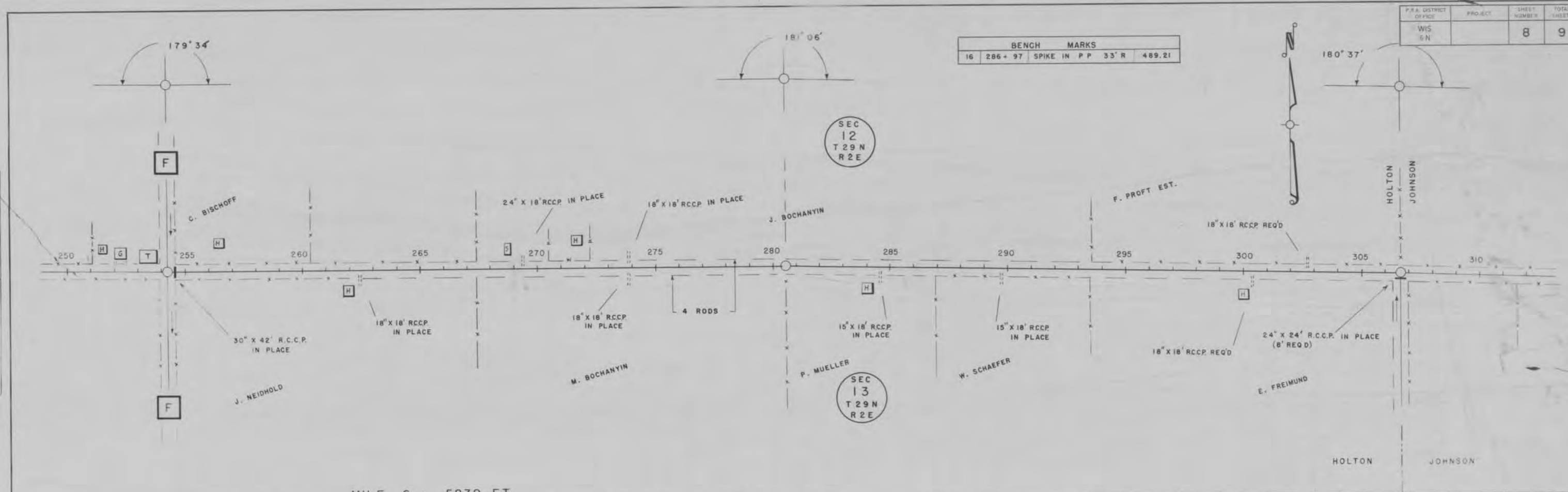
PROFILE
 DRAWN BY
 CHECKED BY
 DATE

P.R.A. DISTRICT OFFICE	PROJECT	SHEET NUMBER	TOTAL SHEETS
WIS 5N		8	9

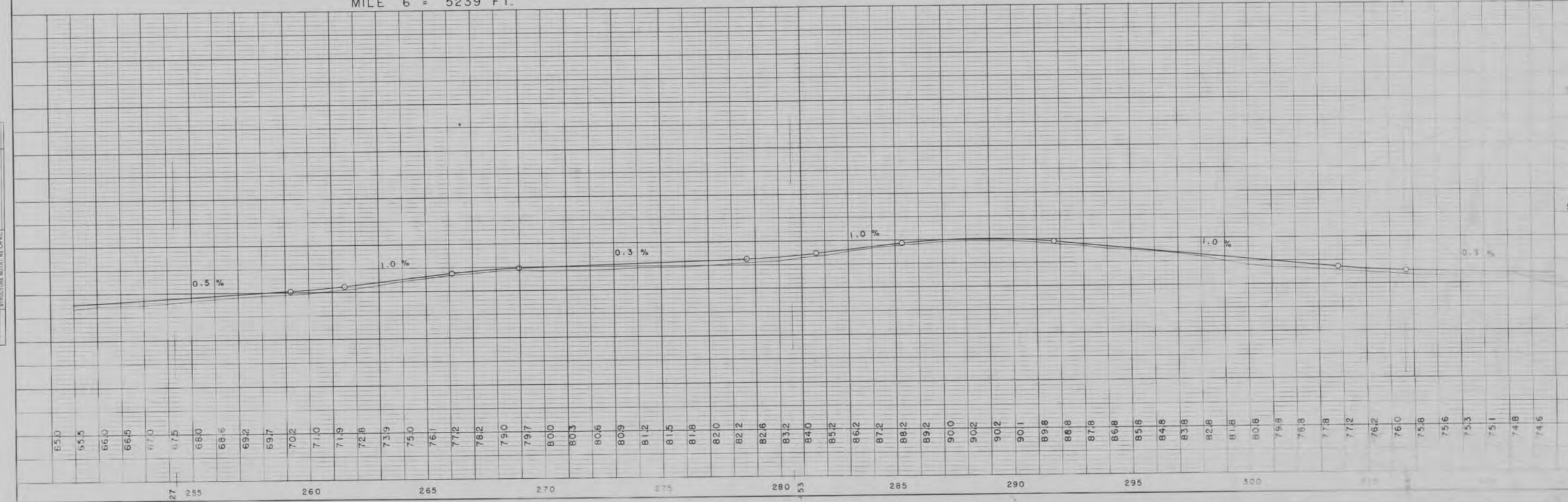
BENCH MARKS	
16	286 + 97 SPIKE IN P P 33' R 489.21

PLAN
 SURVEYED
 PLOTTED
 CHECKED
 DATE
 2-49
 C. E. G.
 NOTE BOOK NO. 101

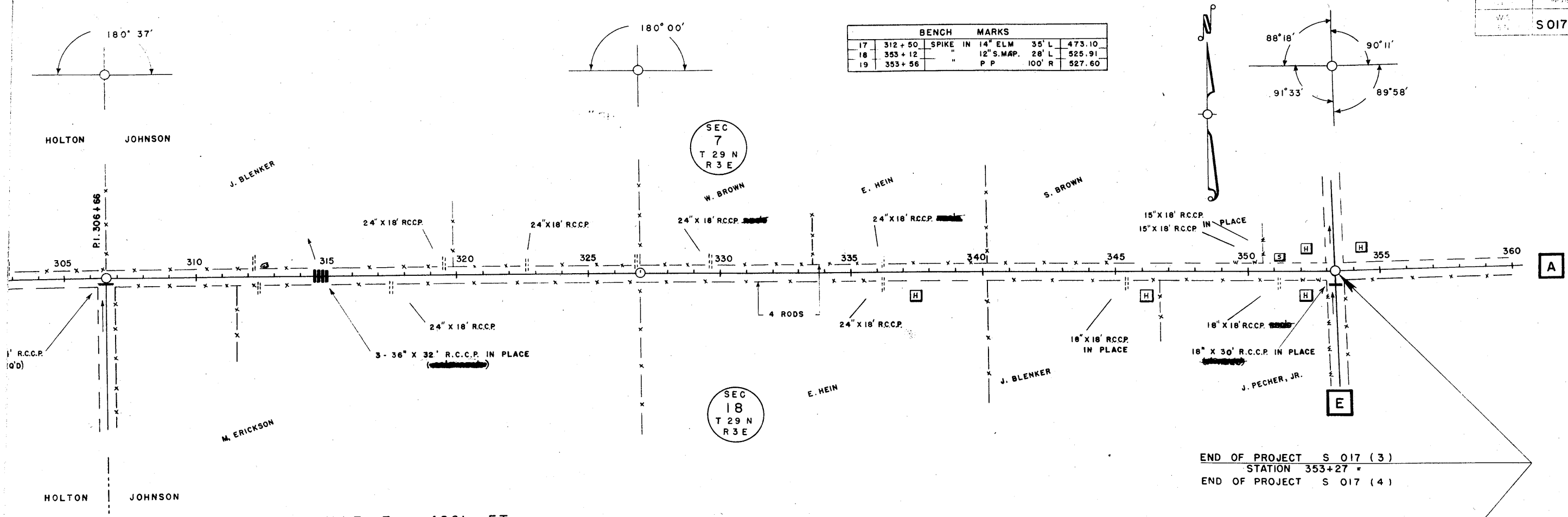
PROFILE
 SURVEYED
 PLOTTED
 CHECKED
 DATE
 L-55
 C. E. G.
 NOTE BOOK NO. 101



MILE 6 = 5239 FT.

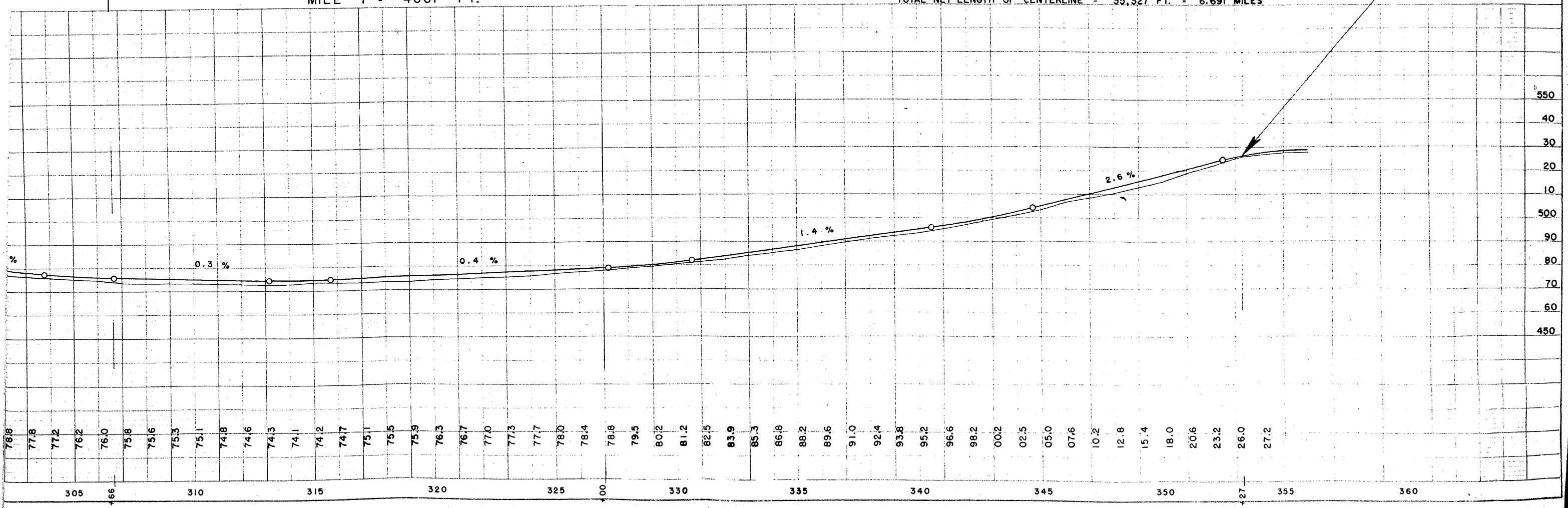


BENCH MARKS					
17	312 + 50	SPIKE IN	14" ELM	35' L	473.10
18	353 + 12	"	12" S. MAP.	28' L	525.91
19	353 + 56	"	P P	100' R	527.60



MILE 7 = 4661 FT.

TOTAL NET LENGTH OF CENTERLINE = 35,327 FT. = 6.691 MILES



Station	Elevation (ft)
305	76.8
306	77.8
307	77.2
308	76.2
309	76.0
310	75.8
311	75.6
312	75.3
313	75.1
314	74.8
315	74.6
316	74.3
317	74.1
318	74.2
319	74.7
320	75.1
321	75.5
322	75.9
323	76.3
324	76.7
325	77.0
326	77.3
327	77.7
328	78.0
329	78.4
330	78.8
331	79.5
332	80.2
333	81.2
334	82.5
335	83.9
336	85.3
337	86.8
338	88.2
339	89.6
340	91.0
341	92.4
342	93.8
343	95.2
344	96.6
345	98.2
346	100.2
347	102.5
348	105.0
349	107.6
350	110.2
351	112.8
352	115.4
353	118.0
354	120.6
355	123.2
356	126.0
357	127.2