

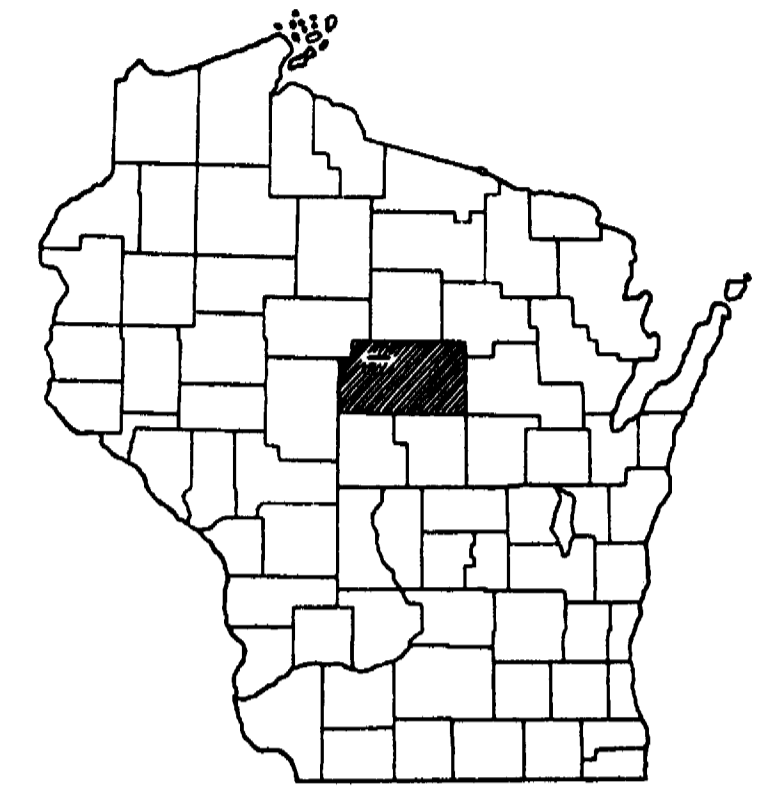
COUNTY AND HIGHWAY	ROUTE AND SECTION	CLASS AND AGREEMENT		FEDERAL DIVISION OFFICE	SHEET NUMBER	TOTAL SHEETS
		STATE	FEDERAL			
				WIS. 4		

**INDEX OF SHEETS**

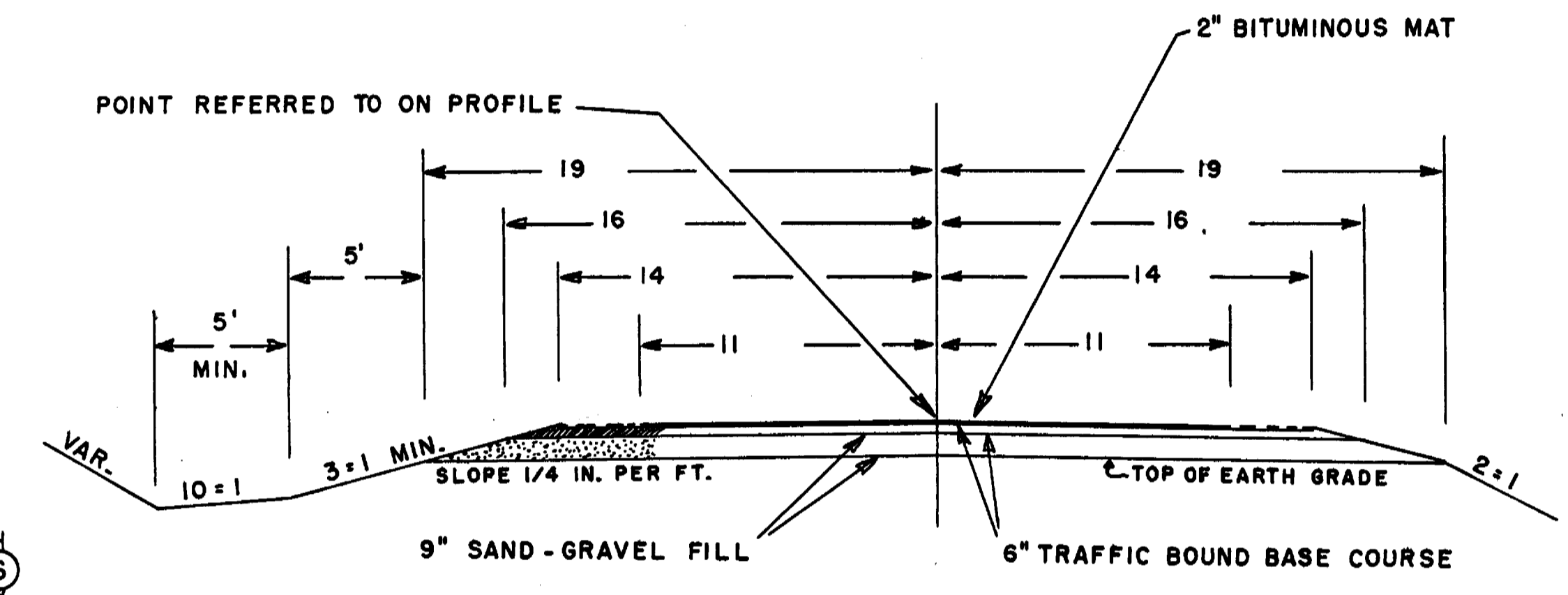
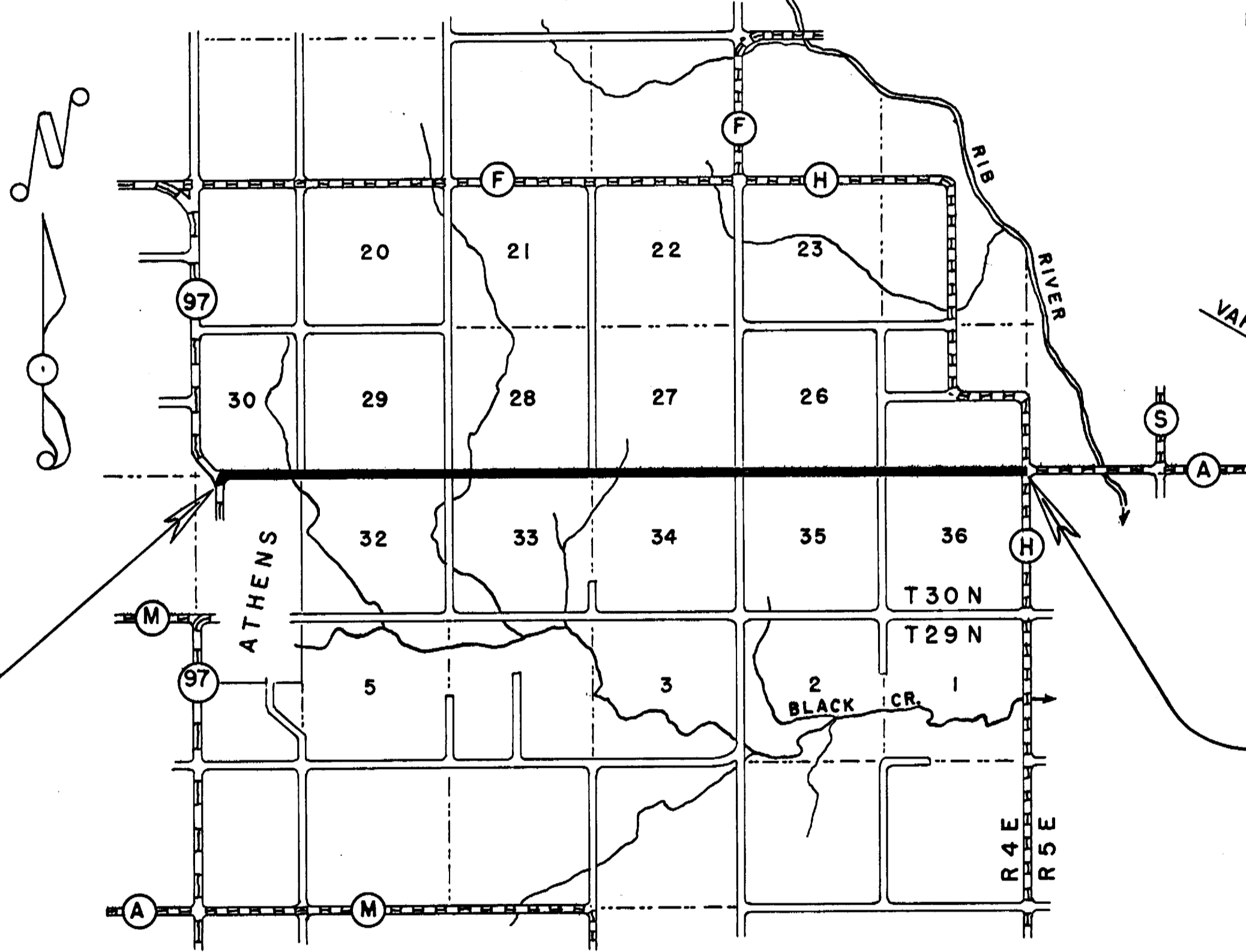
- SHEET NO. 1 TITLE
- SHEET NO. TYPICAL CROSS SECTIONS
- SHEET NO. ESTIMATE OF QUANTITIES
- SHEET NO. MISCELLANEOUS QUANTITIES
- SHEET NO. RIGHT OF WAY PLAT
- SHEET NO. PLAN AND PROFILE STA. TO STA.
- SHEET NO. STANDARD DETAILS
- SHEET NO. DRAINAGE STRUCTURES
- SHEET NO. CROSS SECTIONS

**STATE OF WISCONSIN**  
**STATE HIGHWAY COMMISSION OF WISCONSIN**

**PLAN AND PROFILE OF PROPOSED**



**SCALES** { PLAN 1 IN. = 100 FT.  
 PROFILE HOR. 1 IN. = 100 FT. VERT. 1 IN. = 10 FT.  
 CROSS SECTIONS HOR. 1 IN. = 5 FT. VERT. 1 IN. = 5 FT.



**BEGINNING OF PROJECT**  
 STA. 1 + 86.0 = 385.7' S. OF QUAR. COR. SEC. 30 & 31  
 = 186.0' N. OF STA. 64 + 31.7 PROJECT S 015 5

**END OF PROJECT**  
 STA. 292 + 94.5 = NE COR. OF SEC. 36  
 = STA. 64 + 00.0 PROJECT S 016 1

**CONVENTIONAL SIGNS**

- |                                |  |
|--------------------------------|--|
| STATE LINE.....                | CULVERTS IN PLACE.....                 |
| COUNTY LINE.....               | CULVERTS REQUIRED.....                 |
| TOWNSHIP OR RANGE LINE.....    | DROP INLET.....                        |
| SECTION LINE.....              | POWER POLE.....                        |
| NEW RIGHT OF WAY LINE.....     | TELEPHONE OR TELEGRAPH POLE.....       |
| PRESENT RIGHT OF WAY LINE..... | RIGHT OF WAY MARKERS.....              |
| WIRE FENCE { WOVEN.....        | REFERENCE STAKE FOR HUBS ONLY.....     |
| { BARBED.....                  | MARSH.....                             |
| LOT LINE.....                  | HEDGE.....                             |
| CORPORATE OR CITY LIMITS.....  | TREES.....                             |
| PROPERTY LINE.....             | GROUND ELEVATION..... DATUM LINE 75.16 |
| TRAVELED WAY OR P.E.....       | GRADE ELEVATION..... DATUM LINE 75.16  |
| RAILROADS.....                 |  |
| BASE OR SURVEY LINE.....       |  |

**LAYOUT**  
 SCALE ONE MILE

TOTAL NET LENGTH OF CENTERLINE = 5.513 MI.

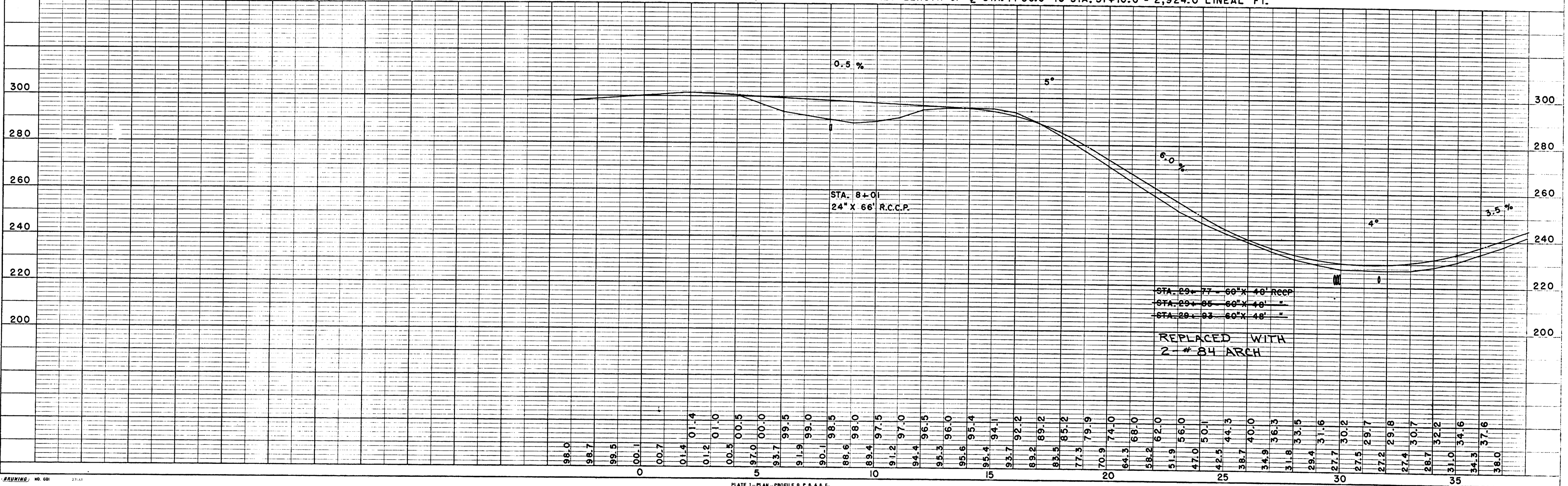
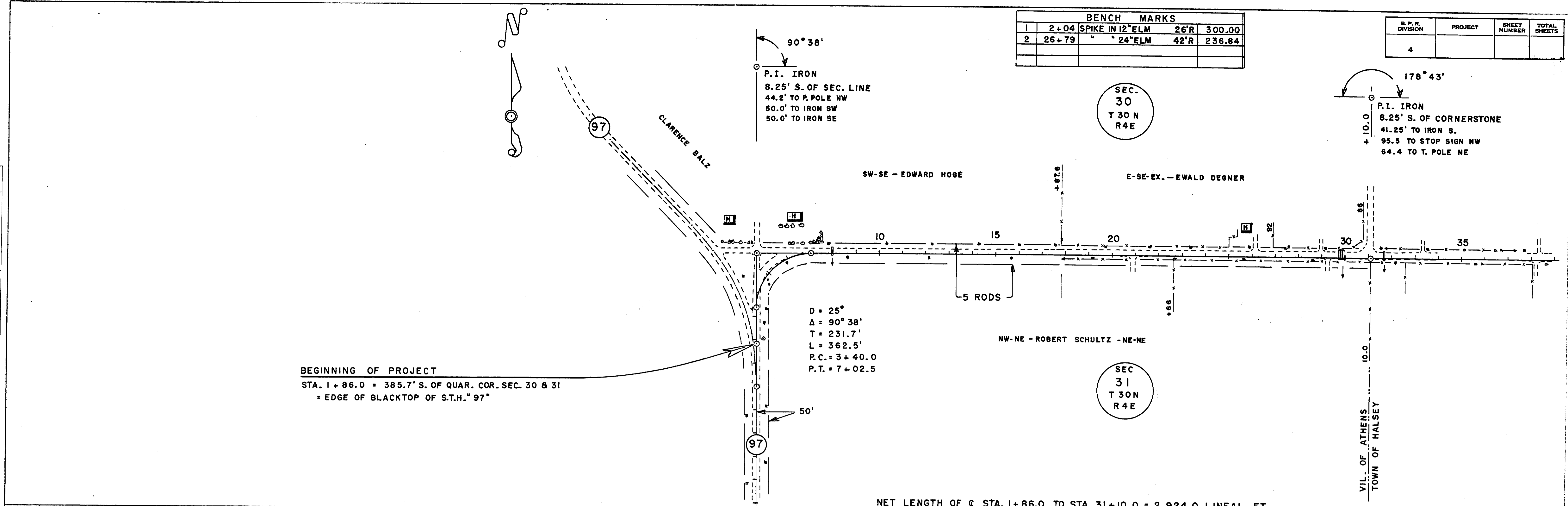
STATE HIGHWAY COMMISSION OF WISCONSIN MADISON, WIS.	
SURVEYOR <u>CEC</u>	NOTE BOOK <u>M 91</u>
DIVISION COMPUTER <u>CAL</u>	M. O. CHECKER
DISTRICT CHECKER	CORRECT
CORRECT:	
DATE	DISTRICT ENGINEER
RECOMMENDED FOR APPROVAL:	
DATE	ENGINEER OF DESIGN
APPROVED:	
DATE	STATE HIGHWAY ENGINEER
DEPARTMENT OF COMMERCE BUREAU OF PUBLIC ROADS	
APPROVED: [Signature]	
DATE	
[Signature]	
DISTRICT ENGINEER	

PLAN	DATE	2-60
	BY	C.E.C.
SURVEYED	ALIGNMENT CHECKED	
	RT. OF WAY CHECKED	
NOTE BOOK NO.		

PROFILE	DATE	1-60
	BY	C.E.C.
SURVEYED	GRADES CHECKED	
	STRUCTURE NOTATIONS CH'D	
NOTE BOOK NO.		

BENCH MARKS			
1	2+04	SPIKE IN 12" ELM	26'R 300.00
2	26+79	" 24" ELM	42'R 236.84

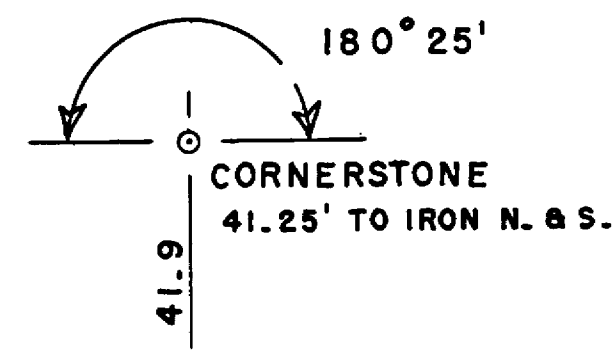
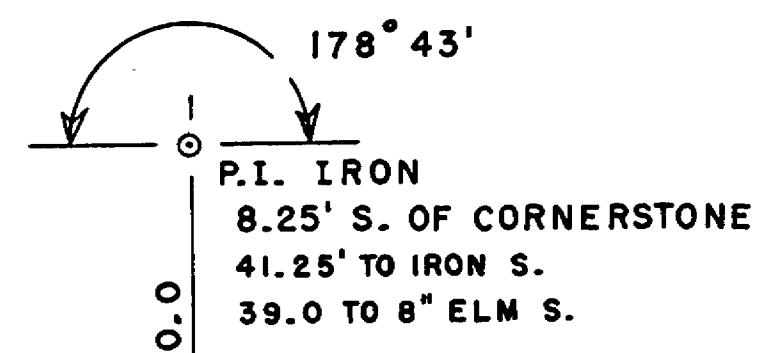
B.P.R. DIVISION	PROJECT	SHEET NUMBER	TOTAL SHEETS
4			



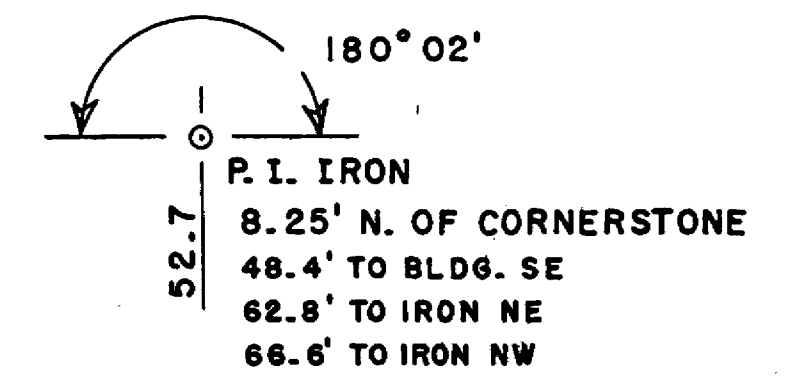
C.T.H. "A" - HALSEY

BENCH MARKS				
3	37+79	SPIKE IN 12" MAPLE	50'L	240.80
4	44+32	" " 10" ELM	45'R	263.26
5	70+41	" " 20" ELM	45'R	253.22
6	88+90	" " 18" OAK	55'R	227.99

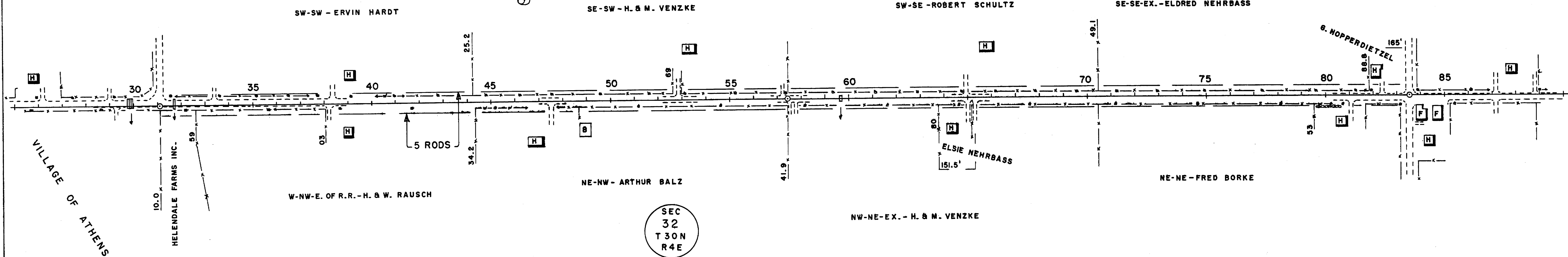
B.P.R. DIVISION	PROJECT	SHEET NUMBER	TOTAL SHEETS
4			



SEC.  
29  
T 30 N  
R 4 E

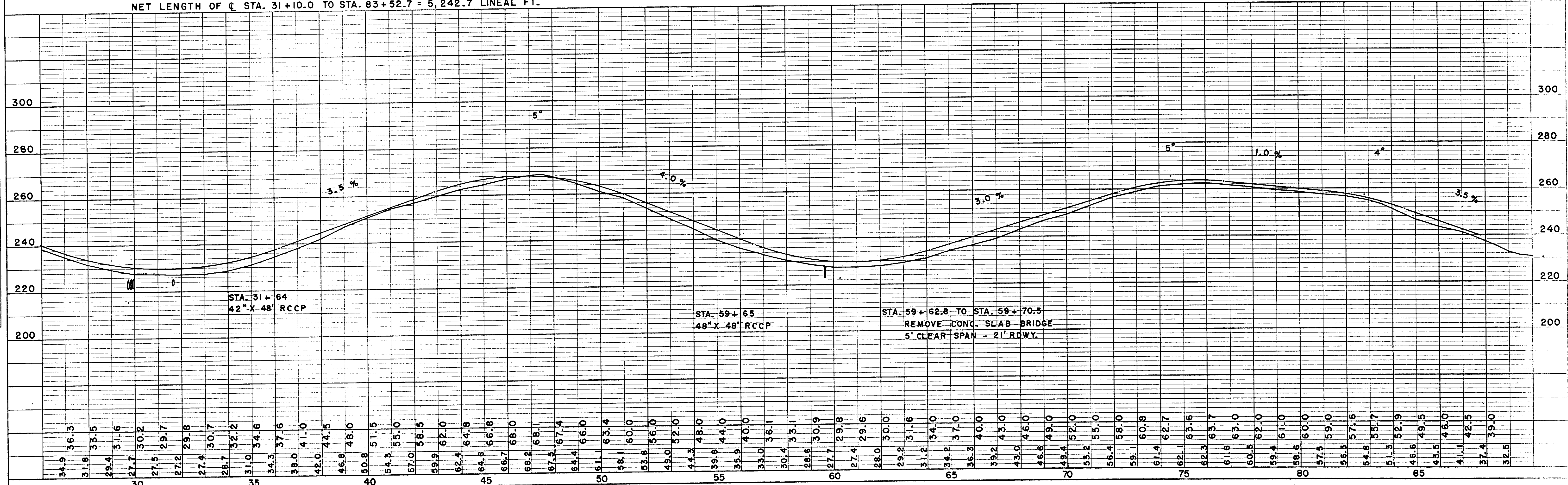


PLAN  
SURVEYED, PLOTTED, ALIGNED, CHECKED, NO. OF PARTS CHECKED, BY, DATE, C.E.C., 2-60



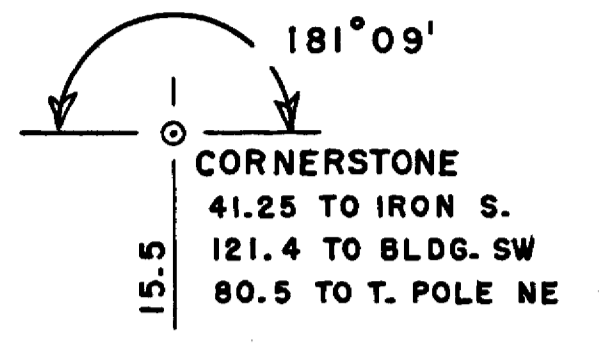
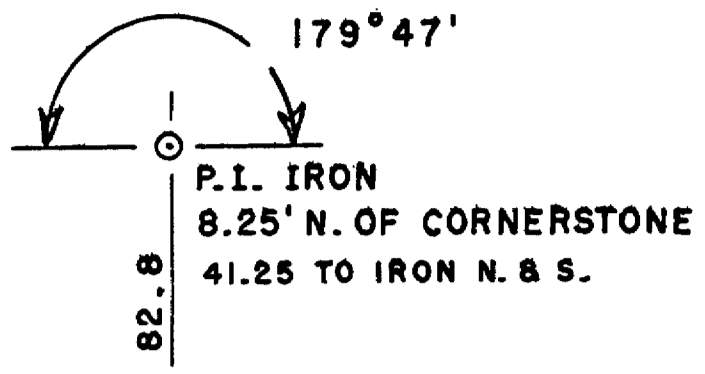
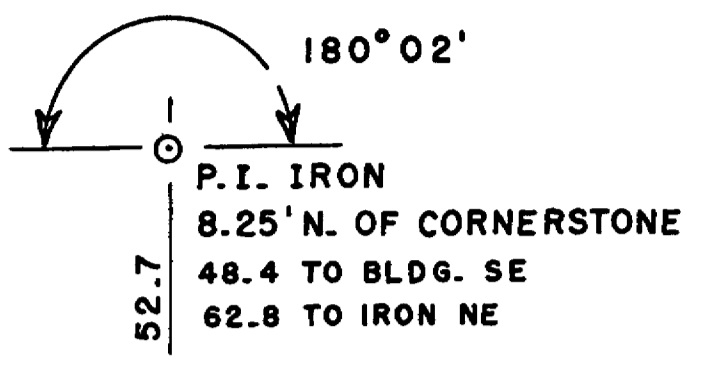
NET LENGTH OF C. STA. 31+10.0 TO STA. 83+52.7 = 5,242.7 LINEAL FT.

PROFILE  
SURVEYED, GRADES CHECKED, B.M. NOTED, STRUCTURE, NOTES, CH. NO., BY, DATE, C.E.C., 1-60



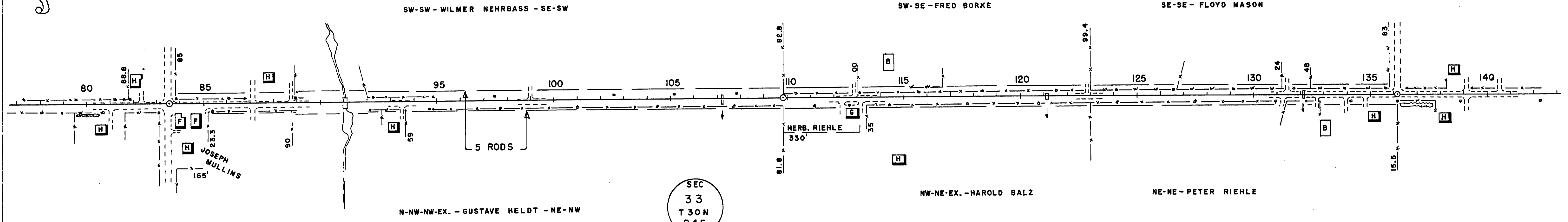
C.T.H. "A" - HALSEY

BENCH MARKS			
6	88+90	SPIKE IN 18" OAK	55'R 227.99
7	112+19	" " 12" MAPLE	48'L 273.68
8	134+34	" " 6" APPLE	45'R 239.52



SEC  
28  
T 30N  
R 4E

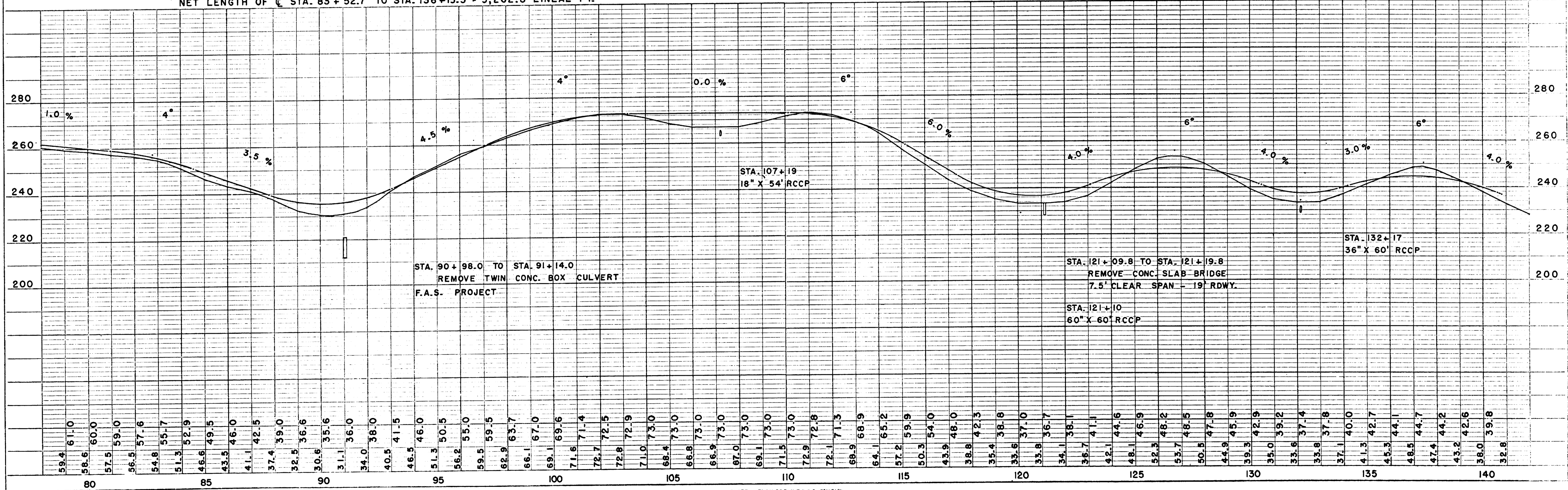
SEC  
33  
T 30N  
R 4E



DATE  
2-60  
BY  
C.E.C.  
SURVEYED  
ALIGNED  
CHECKED  
NO. OF WGS CHECKED

DATE  
2-60  
BY  
C.E.C.  
SURVEYED  
GRADES CHECKED  
STRUCTURE NOTED AS SHOWN

NET LENGTH OF C STA. 83+52.7 TO STA. 136+15.5 = 5,262.8 LINEAL FT.



C.T.H. "A" - HALSEY

181°09'  
CORNERSTONE  
41.25' TO IRON S.  
43.6 TO STOP SIGN N.W.  
121.4 TO BLDG. SW

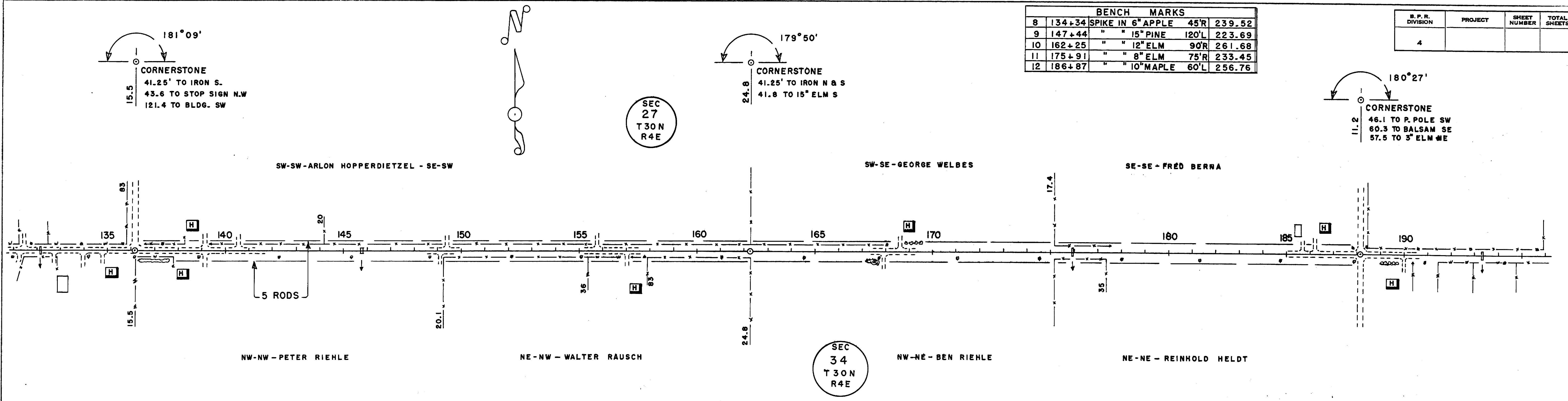
179°50'  
CORNERSTONE  
41.25' TO IRON N & S  
41.8 TO 15" ELM S

180°27'  
CORNERSTONE  
46.1 TO P. POLE SW  
60.3 TO BALSAM SE  
57.5 TO 3" ELM NE

BENCH MARKS				
8	134+34	SPIKE IN 6" APPLE	45'R	239.52
9	147+44	" " 15" PINE	120'L	223.69
10	162+25	" " 12" ELM	90'R	261.68
11	175+91	" " 8" ELM	75'R	233.45
12	186+87	" " 10" MAPLE	60'L	256.76

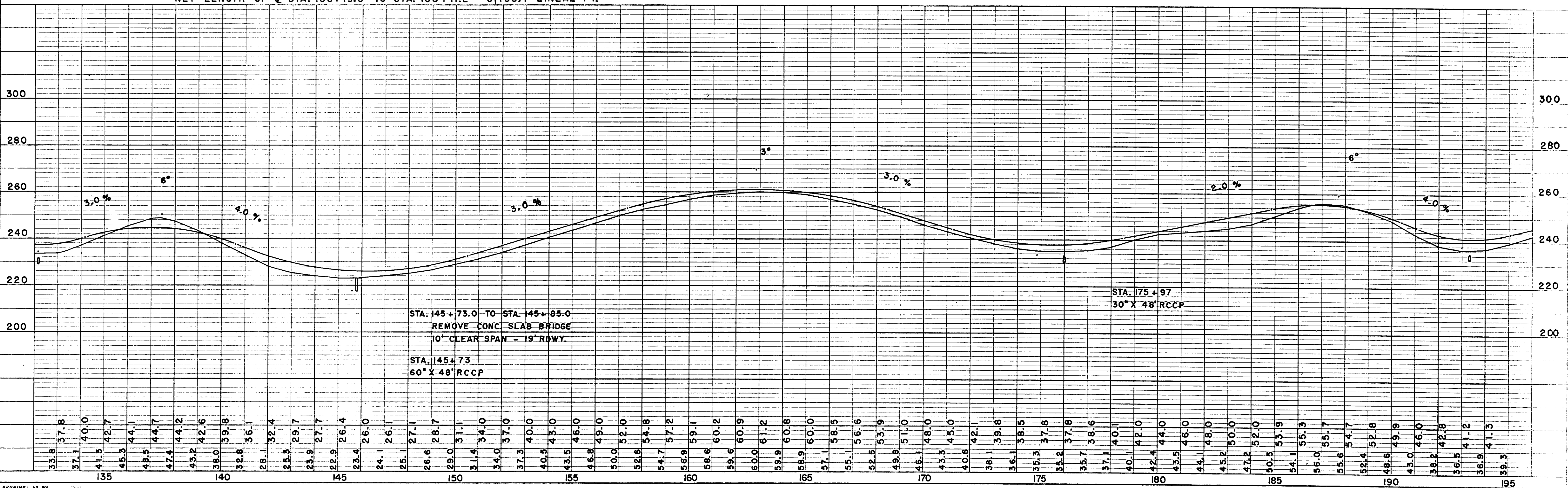
B.P.R. DIVISION	PROJECT	SHEET NUMBER	TOTAL SHEETS
4			

PLAN  
DATE: 2-60  
BY: C.E.C.  
SURVEYED: C.E.C.  
NOTE BOOK: C.E.C.  
ALIGNMENT CHECKED: C.E.C.  
RT. OF WAY CHECKED: C.E.C.



NET LENGTH OF C STA. 136+15.5 TO STA. 188+11.2 = 5,195.7 LINEAL FT.

PROFILE  
DATE: 2-60  
BY: C.E.C.  
SURVEYED: C.E.C.  
NOTE BOOK: C.E.C.  
GRADES CHECKED: C.E.C.  
ELEVATION INDICATED: C.E.C.



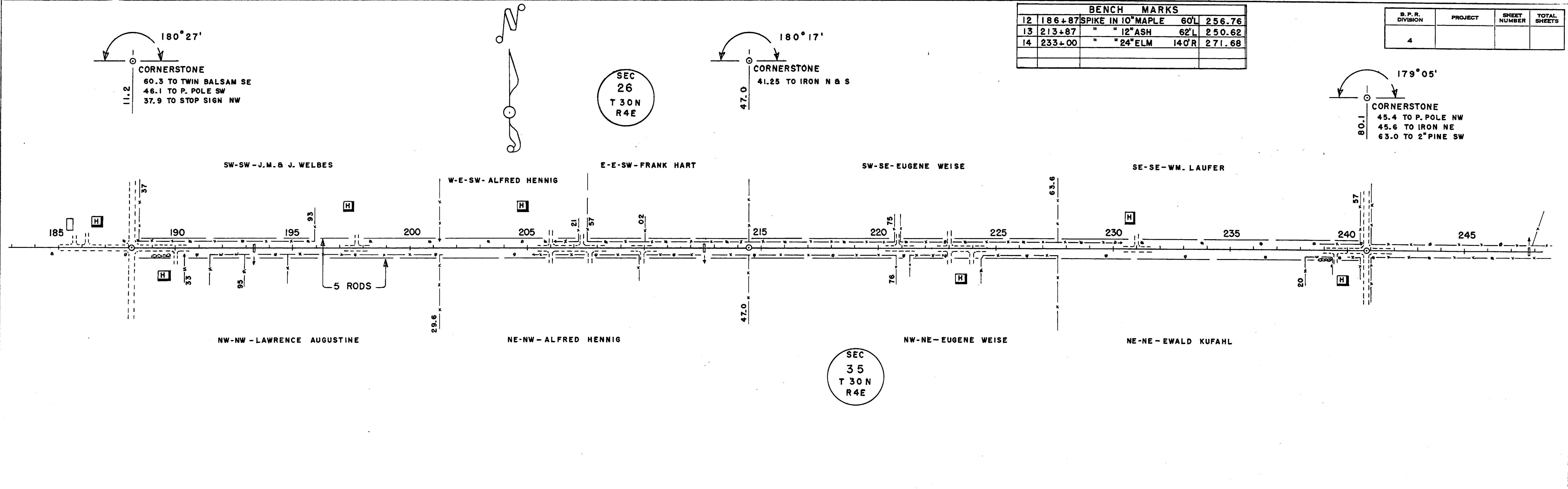
C.T.H. "A" - HALSEY

BENCH MARKS			
12	186+87	SPIKE IN 10" MAPLE	60'L 256.76
13	213+87	" " 12" ASH	62'L 250.62
14	233+00	" " 24" ELM	14'0"R 271.68

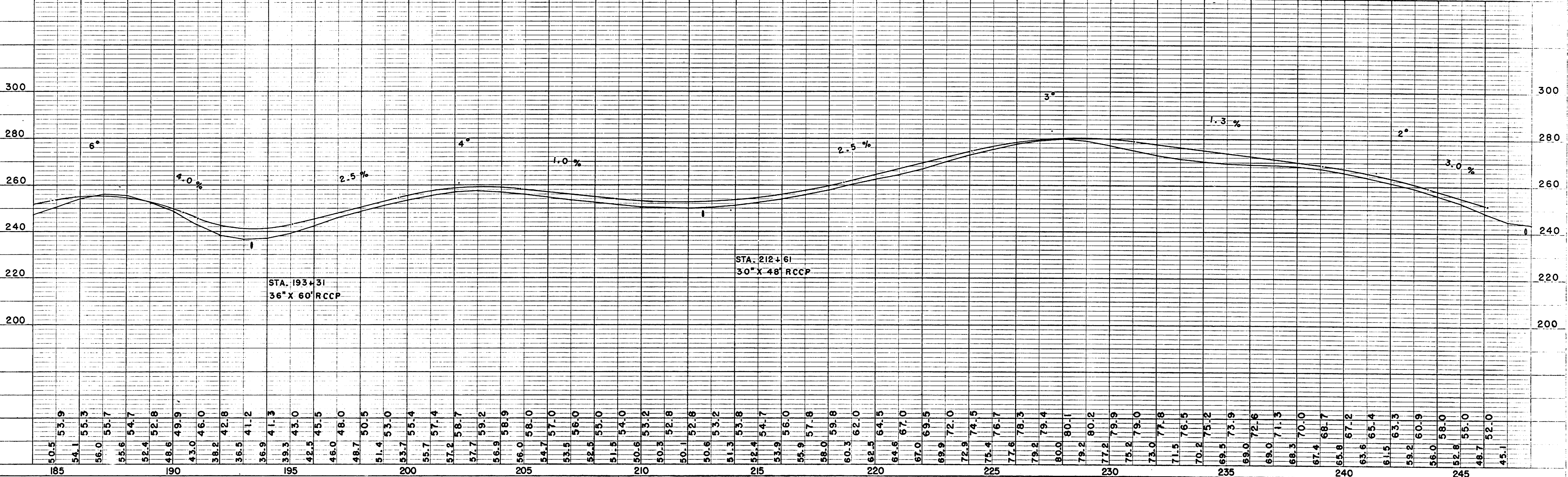
B.P.R. DIVISION	PROJECT	SHEET NUMBER	TOTAL SHEETS
4			

PLAN  
 SURVEYED BY C.E.C.  
 DATE 2-60  
 NOTE BOOK NO. 111111

PROFILE  
 SURVEYED BY C.E.C.  
 DATE 2-60  
 NOTE BOOK NO. 111111



NET LENGTH OF C. STA. 188+11.2 TO STA. 240+80.1 = 5,268.9 LINEAL FT.



C.T.H. "A" - HALSEY

BENCH MARKS			
14	233+00	SPIKE IN 24" ELM	140R 271.68
15	267+46	" " 8" MAPLE	52R 240.27
16	292+45	" " 10" ELM	79L 198.01

B.P.R. DIVISION	PROJECT	SHEET NUMBER	TOTAL SHEETS
4			

179°05'  
CORNERSTONE  
45.6 TO IRON NE  
63.0 TO 2" PINE SW  
45.4 TO POLE NW

SEC  
25  
T30N  
R4E

178°23'  
P.I. IRON  
8.25' N. OF CORNERSTONE  
41.25 TO IRON N & S

181°48'  
CORNERSTONE  
50.1 TO P. POLE NE  
56.4 TO BLDG. SE  
51.3 TO F.A.S. SIGN SW  
38.3 TO BLDG. NW

SW-SW - E. & H. KUFAHL

SE-SW - ERWIN RIEMER

SW-SE - ERWIN RIEMER - SE-SE-EX.

NW-NW - ROBERT SCHULTZ

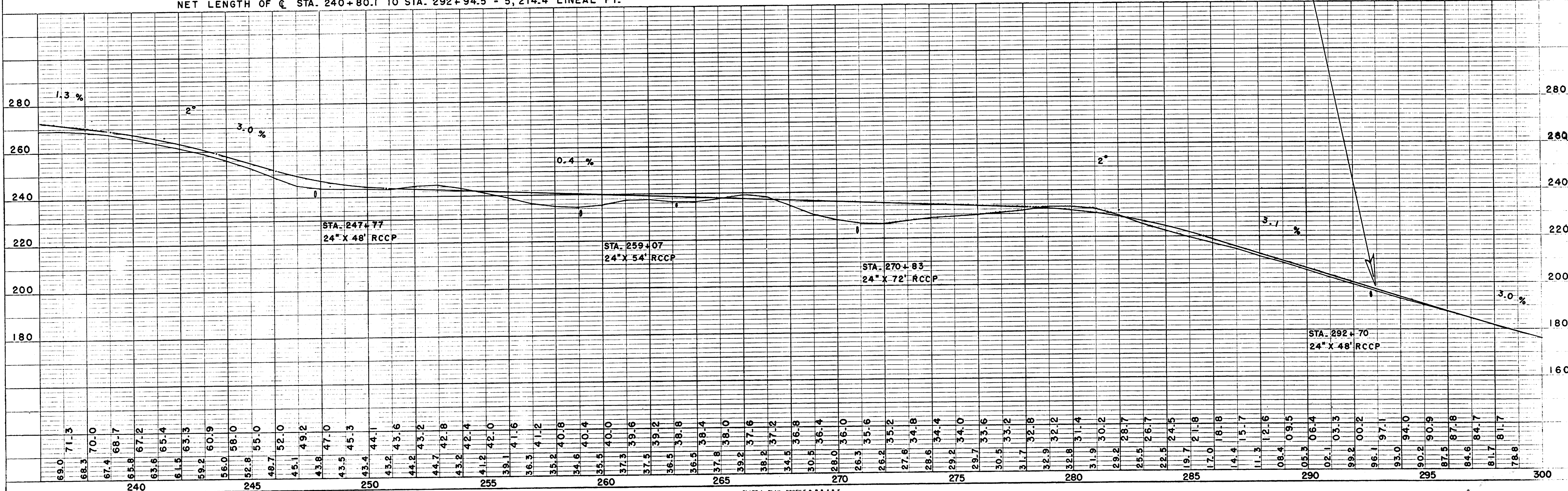
NE-NW - WILLIAM LAUFER

NW-NE - CARL LOCKEN - NE-NE

SEC  
36  
T30N  
R4E

END OF PROJECT  
STA. 292 + 94.5 = NE COR. OF SEC. 36  
= BEGINNING OF PROJECT S-016-1

NET LENGTH OF C STA. 240+80.1 TO STA. 292+94.5 = 5,214.4 LINEAL FT.



PLAN  
DATE: 2-60  
BY: C.E.C.  
CHECKED: [ ]  
NOTED: [ ]  
NO.:

PROFILE  
DATE: 2-60  
BY: C.E.C.  
CHECKED: [ ]  
NOTED: [ ]  
NO.: