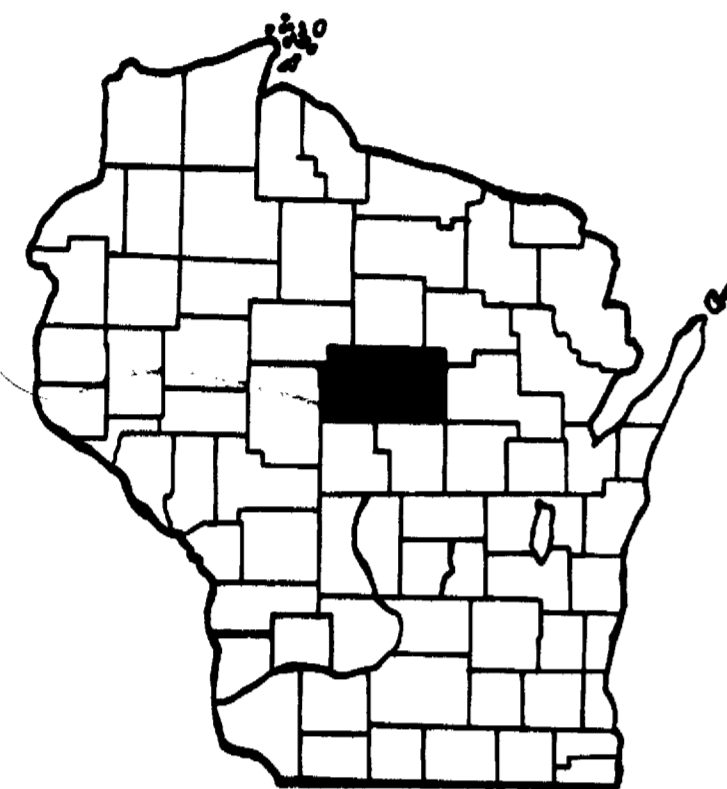


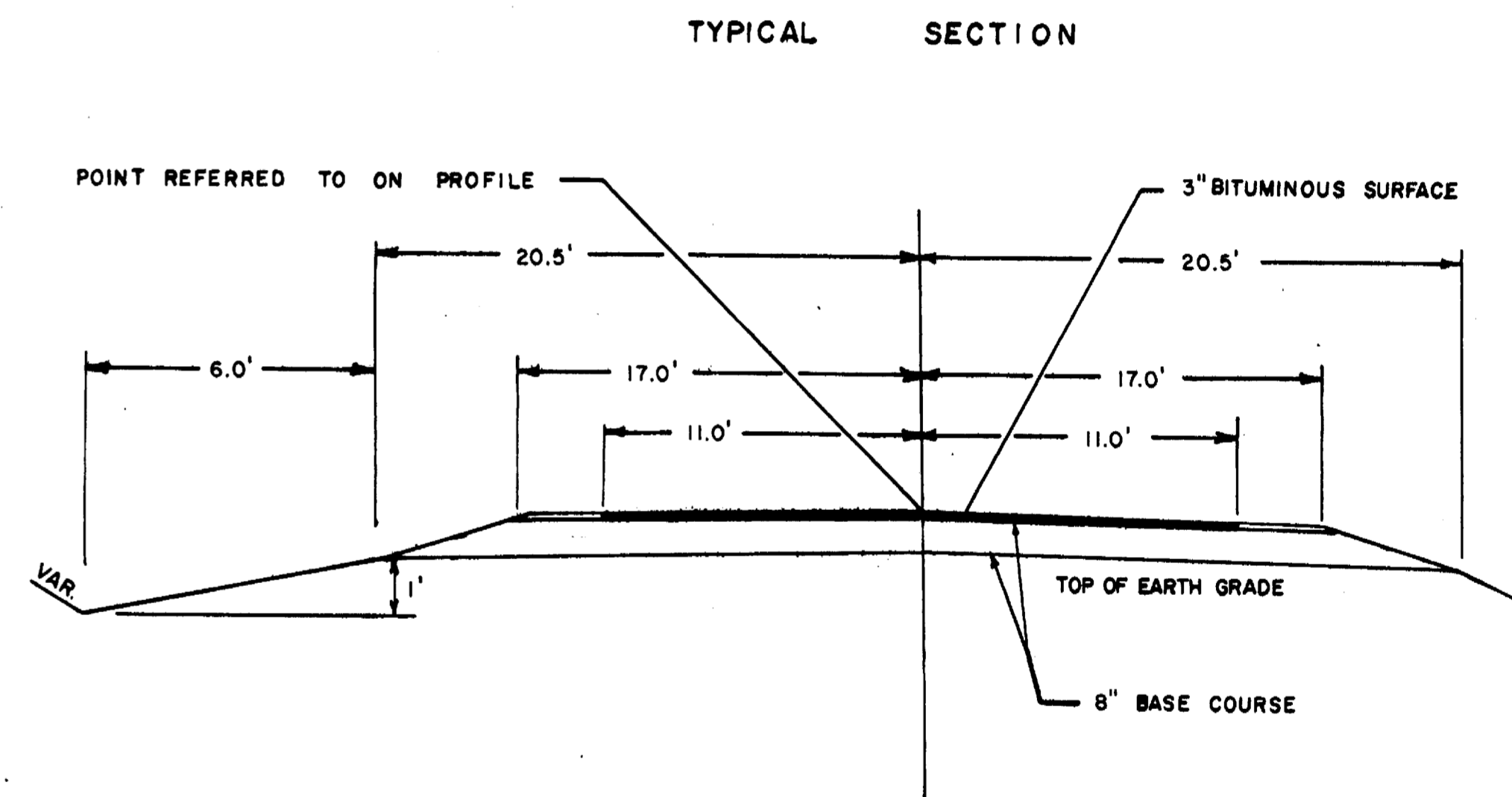
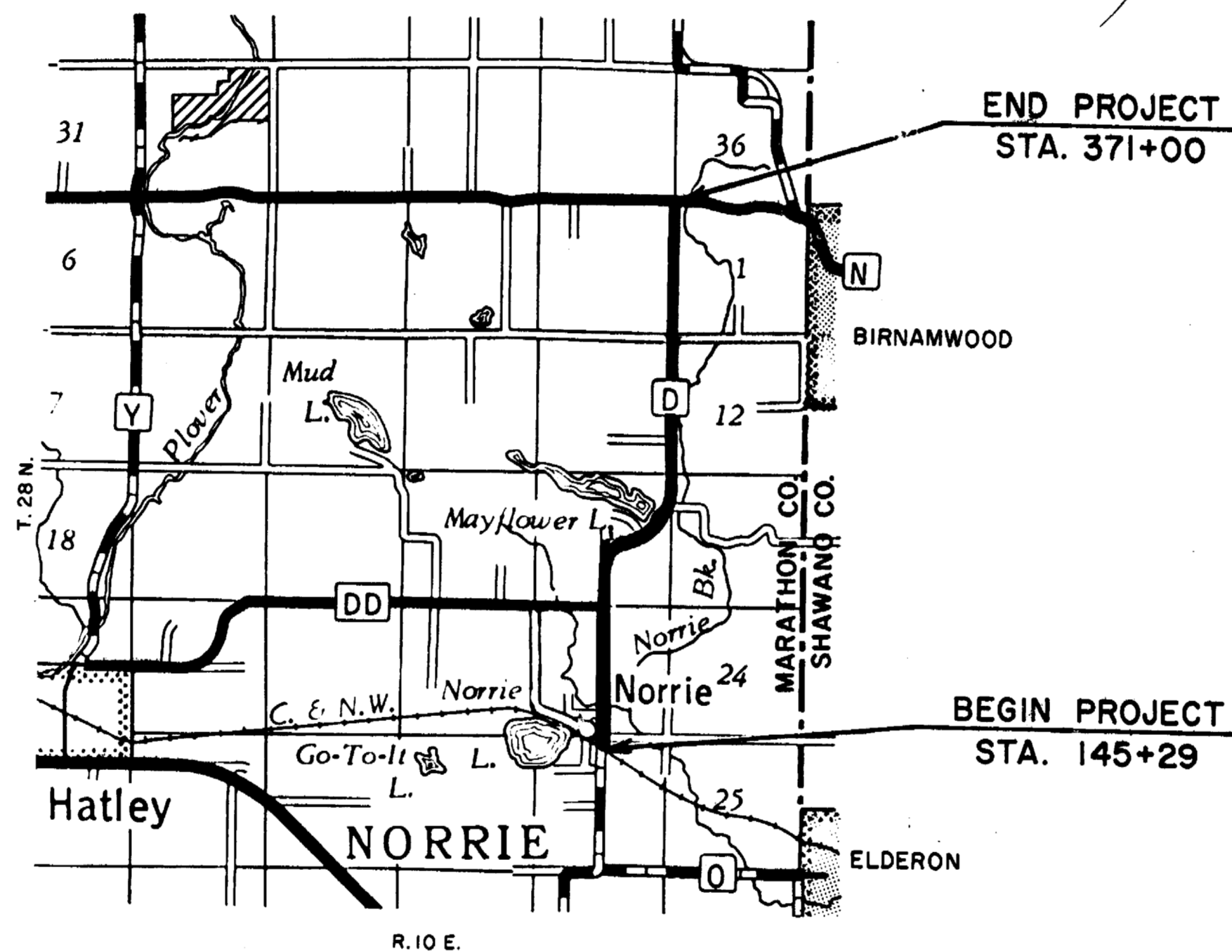
MARATHON COUNTY HIGHWAY DEPARTMENT

PLAN AND PROFILE OF PROPOSED

COUNTY "D" NORRIE — C.T.H. "N"



	SON	HALSEY	HAMBURG	BERLIN	MAINE	TEXAS	HEWITT	HARRISON
HOLTON	JOHNSON	NETBROOK	RIB FALLS	STETTIN		WAUSAU	EASTON	POLOVER
HILL	FRANKFORT	WIER	CASSEL	MARATHON	RIB MT.	WESTON	SHIPLE	NORRIE
SPRINTON	EAU PLENE	CLEVELAND	EMMET	MONROE	KRONENWETTER	MELO	ELDERON	
SPENCER	MOHILLAN	BAY	GREEN VALLEY	BERGEN	WINDLTON	QUENTNER	BEVANT	FRANZEN



LEGEND

NEW RIGHT-OF-WAY	—————
PRESENT RIGHT-OF-WAY	———
PROPERTY LINE	——— PL ———
WELL	⊞
TELEPHONE CABLE	— T — T —
POWER CABLE	— P — P —
GAS LINE	— G — G —
POWER POLE	⊞
TELEPHONE POLE	⊞
TELEPHONE PEDESTAL	⊞
GUY POLE	⊞
TRANSMISSION TOWER & LINE	⊞
FENCE	— x — x —
TRAVELED WAY	———

SCALE = 1" = 100'

NET LENGTH OF CENTERLINE = 4.27

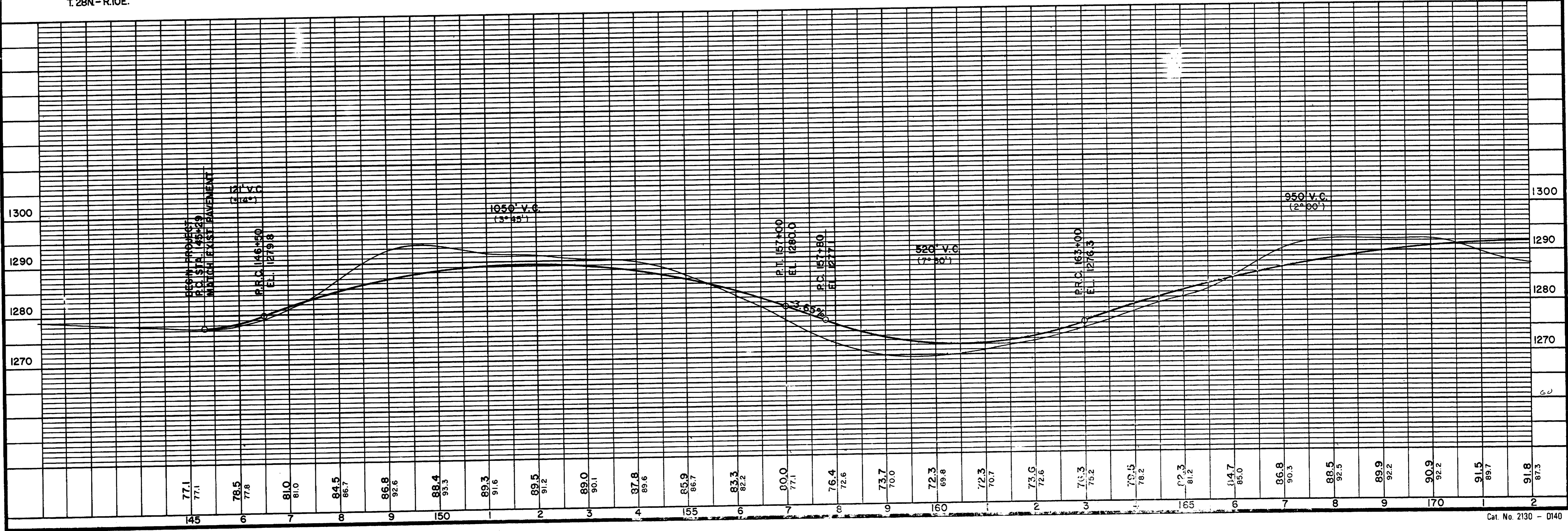
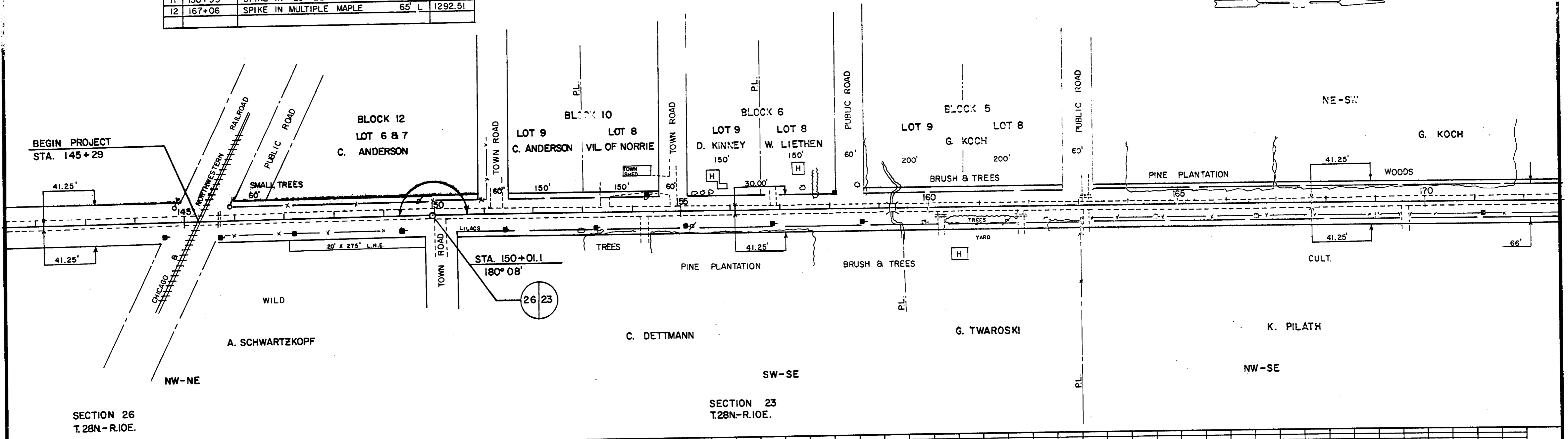
PLAN & PLAT OF RIGHT-OF-WAY

NORRIE - C.T.H. "N"

C.T.H. "D" JANUARY 14, 1997

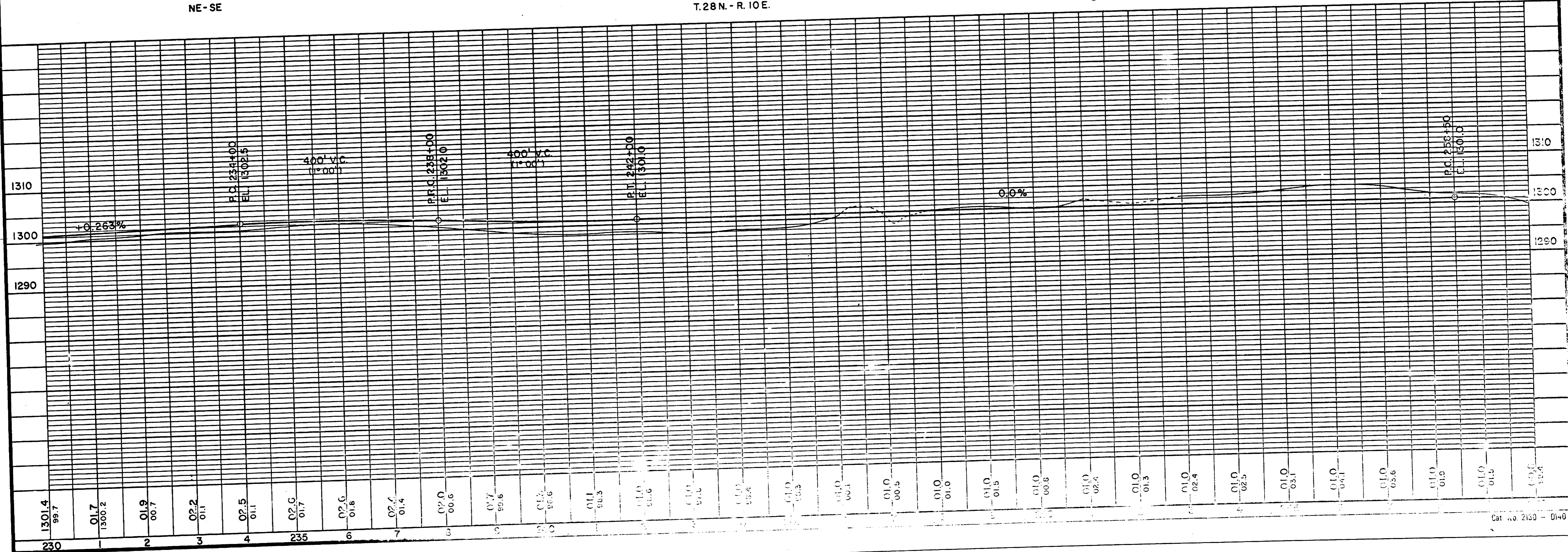
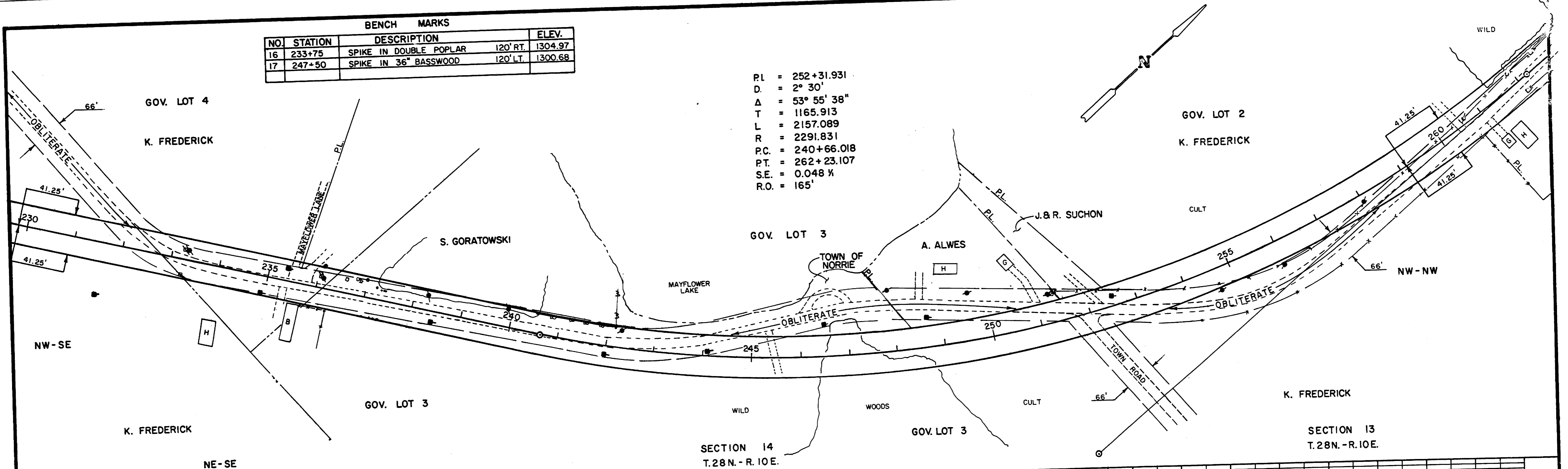
SHEET 1

NO.	STATION	BENCH MARKS DESCRIPTION	ELEV.
11	150+95	SPIKE IN 20" ELM	90' L 1289.39
12	167+06	SPIKE IN MULTIPLE MAPLE	65' L 1292.51

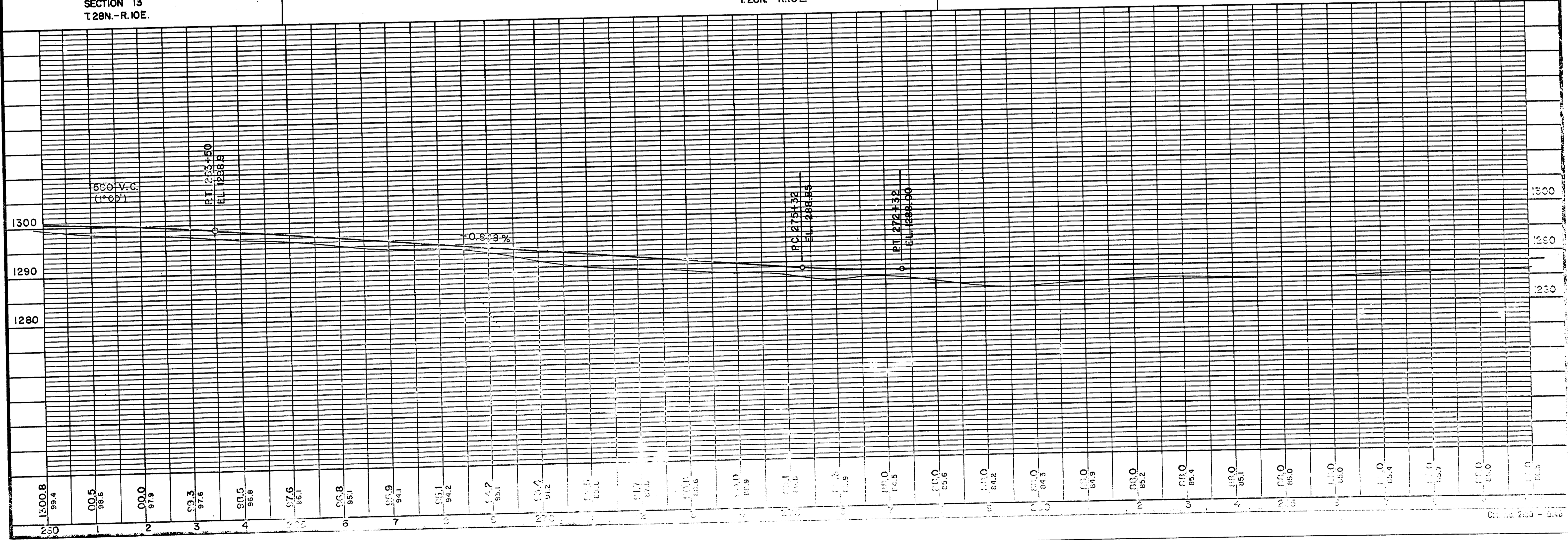
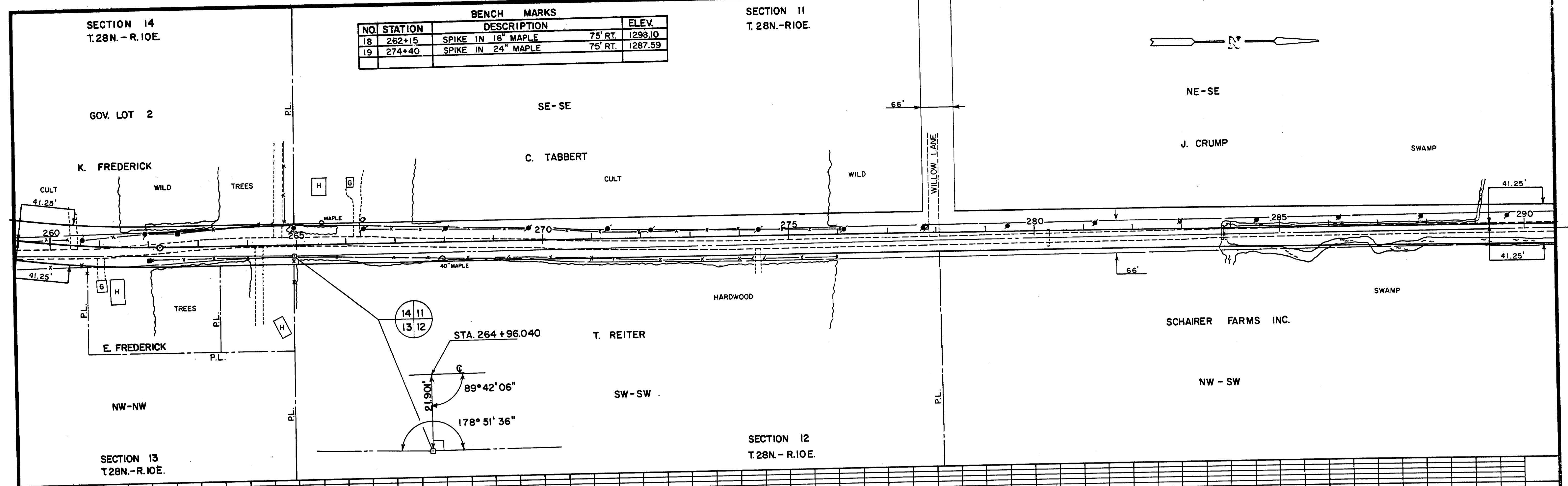
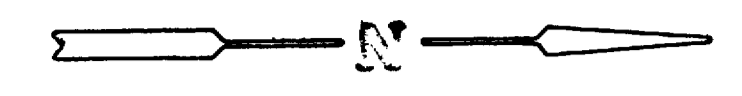


BENCH MARKS			
NO.	STATION	DESCRIPTION	ELEV.
16	233+75	SPIKE IN DOUBLE POPLAR	120' RT. 1304.97
17	247+50	SPIKE IN 36" BASSWOOD	120' LT. 1300.68

PI = 252+31.931
 D = 2° 30'
 Δ = 53° 55' 38"
 T = 1165.913
 L = 2157.089
 R = 2291.831
 P.C. = 240+66.018
 P.T. = 262+23.107
 S.E. = 0.048 %
 R.O. = 165'



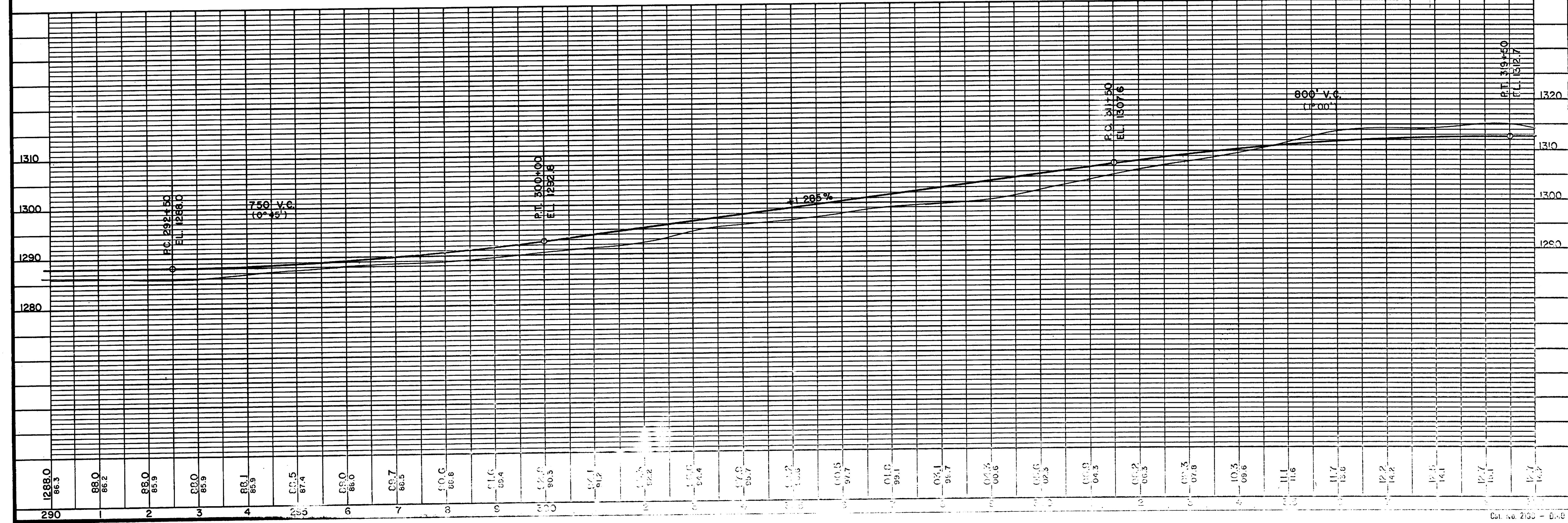
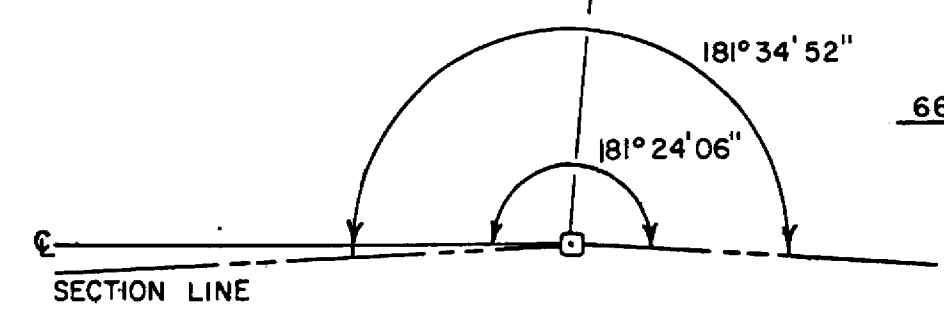
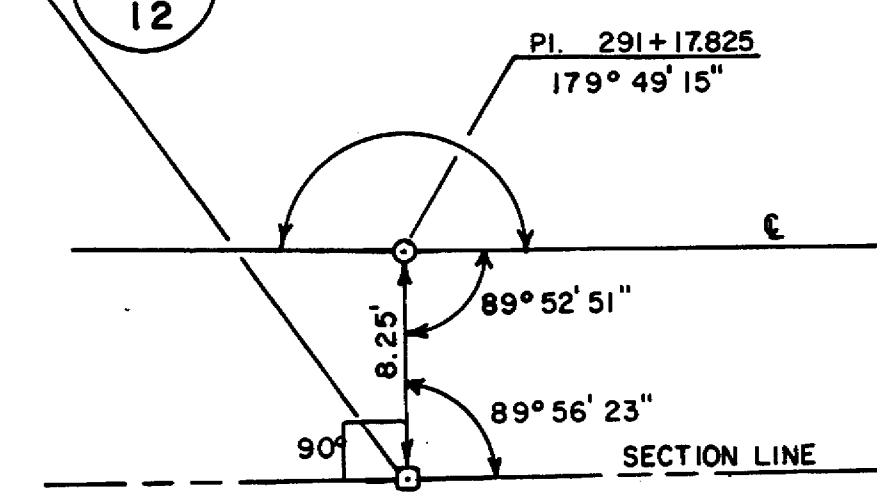
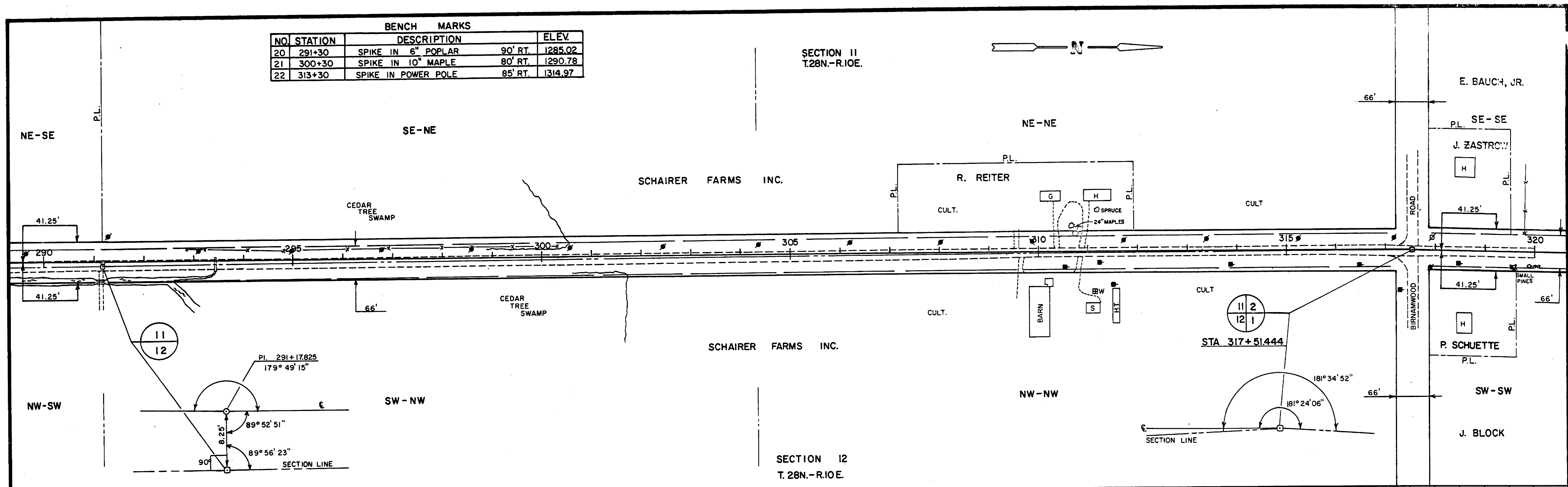
BENCH MARKS			
NO.	STATION	DESCRIPTION	ELEV.
18	262+15	SPIKE IN 16" MAPLE	75' RT. 1298.10
19	274+40	SPIKE IN 24" MAPLE	75' RT. 1287.59



BENCH MARKS			
NO	STATION	DESCRIPTION	ELEV.
20	291+30	SPIKE IN 6" POPLAR 90' RT.	1285.02
21	300+30	SPIKE IN 10" MAPLE 80' RT.	1290.78
22	313+30	SPIKE IN POWER POLE 85' RT.	1314.97

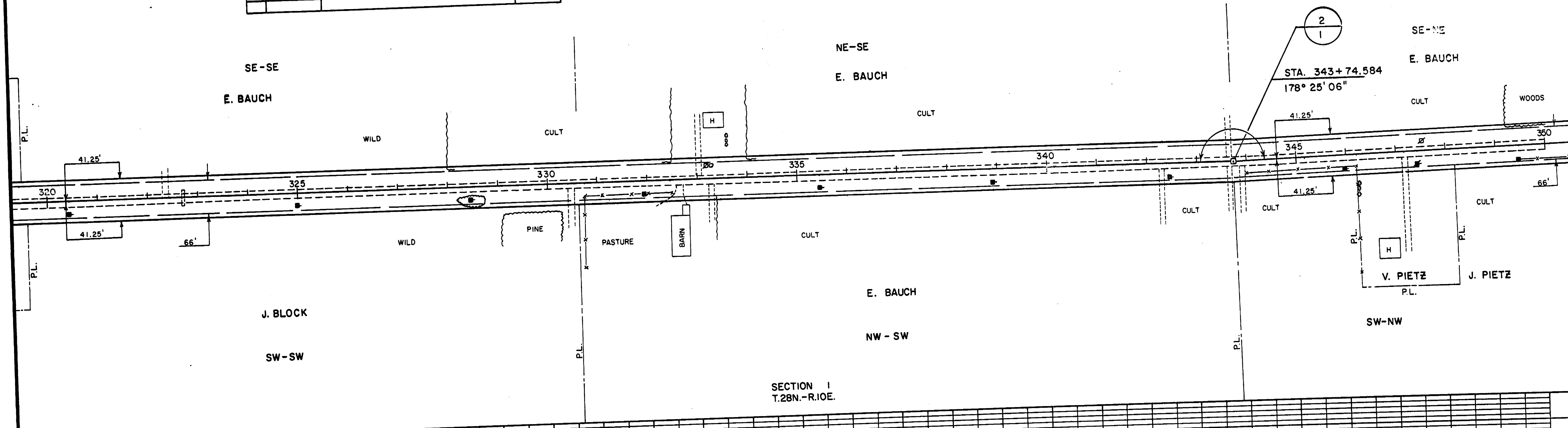
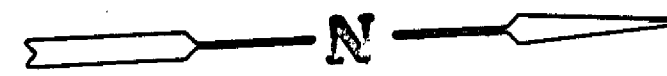
SECTION 11
T.28N.-R.10E.

SECTION 12
T.28N.-R.10E.

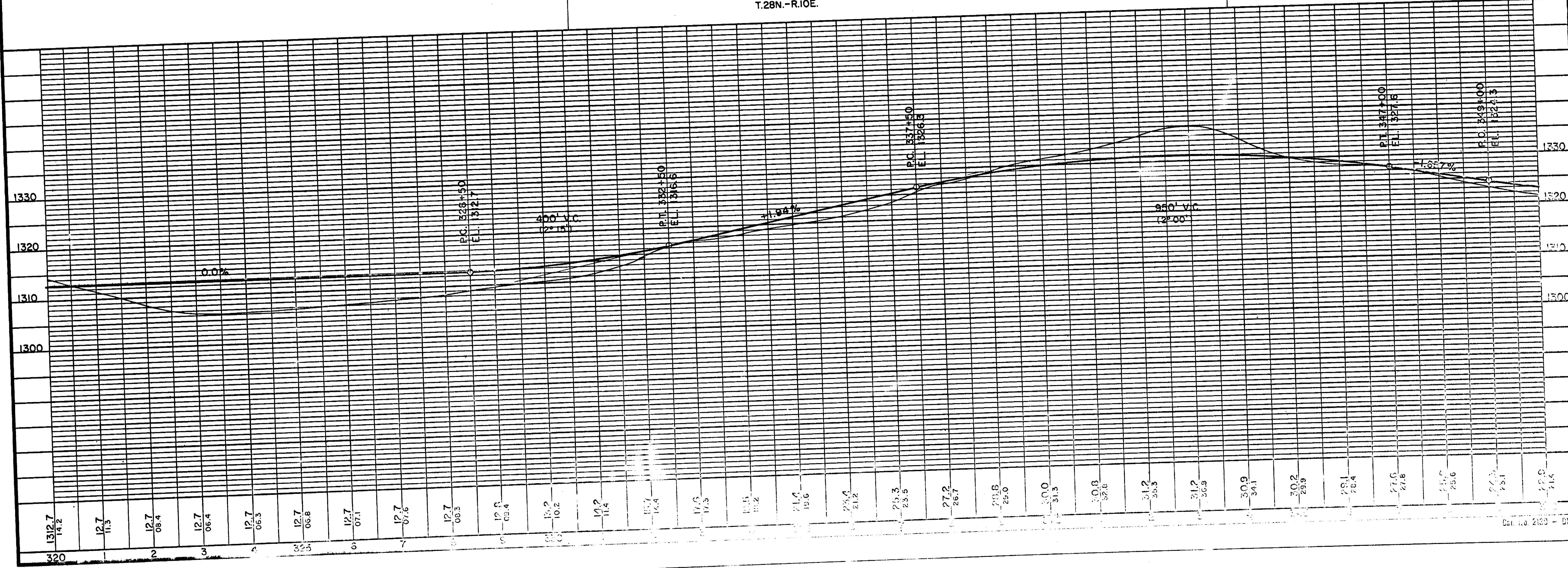


BENCH MARKS			
NO.	STATION	DESCRIPTION	ELEV.
23	332+20	SPIKE IN POWER POLE 90' LT.	1316.08
24	343+85	SPIKE IN 5" PINE 50' LT.	1333.14

SECTION 2
T.28N. - R.10E.



SECTION 1
T.28N. - R.10E.



BENCH MARKS			
NO.	STATION	DESCRIPTION	ELEV.
25	360+50	SPIKE IN DOUBLE 14" ASH 45' RT.	1320.83
26	370+75	SPIKE IN DOUBLE 4" CHERRY 80' RT.	1320.08

SECTION 2
T.26N.-R.10E.

SECTION 1
T.28N.-R.10E.

