

STATE PROJECT	FEDERAL PROJECT	
	PROJECT	CONTRACT
9444-1-71	OS 3799 (I)	I

STATE OF WISCONSIN
DEPARTMENT OF TRANSPORTATION
DIVISION OF HIGHWAYS

PLAN AND PROFILE OF PROPOSED

C.T.H. "N" - C.T.H. "Z"
C.T.H. "D"
MARATHON COUNTY

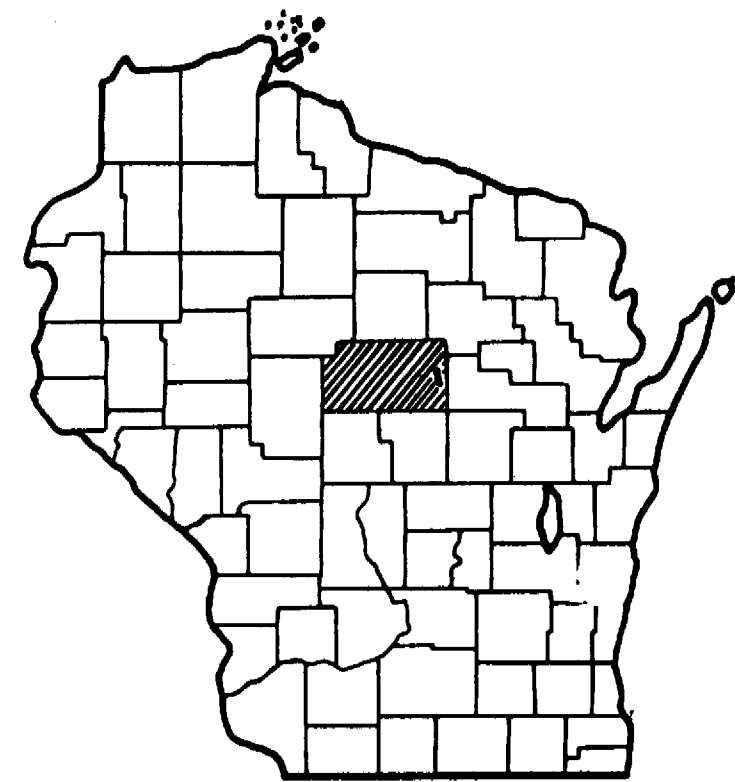
STATE PROJECT NUMBER
9444-1-71

Scales
 Plan 1" = 100'
 Profile Hor 1" = 100 ft Vert 1" = 10 ft
 Cross Sections 1" = 100 ft Vert 1" = 10 ft

Index of Sheets

Sheet No. 1	Title
Sheet No.	Typical Cross Sections
Sheet No.	Estimate of Quantities
Sheet No.	Miscellaneous Quantities
Sheet No.	Right of Way Plat
Sheet No.	Plan and Profile Sta. 0+00 to Sta. 65+42.89 & Sta. 60+59 to Sta. 189+89.4
Sheet No.	Standard Details
Sheet No.	Structure Plans
Sheet No.	Computer Earthwork Data
Sheet No.	Cross Sections

TOTAL SHEETS =



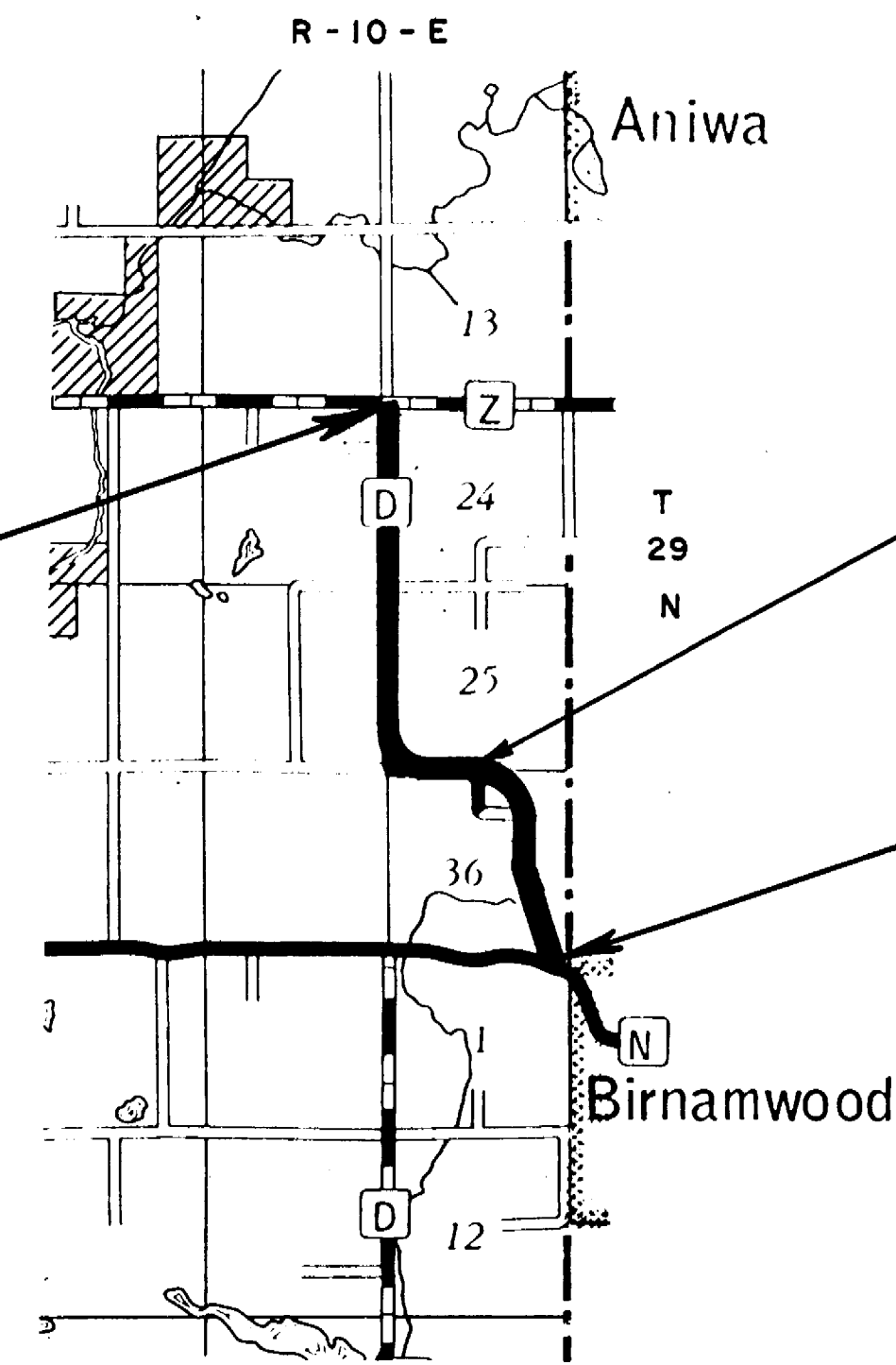
Design Designation

A.D.T. 1975	= 60
A.D.T. 1995	= 120
D.H.V.	= 18
D.	= 50-50
T.	= 5%
V.	= 50 M.P.H.

PRELIMINARY COPY

JUL 9 1975

END PROJECT 9444-1-71
STA. 189+89.4
 N = 421,300 (± 200')
 E = 2,195,800 (± 200')
 N.W. Cor. Sec. 24, T 29 N, R 10 E



STA. 65+42.89 Back =
 STA. 60+59.00 Ahead

BEGIN PROJECT 9444-1-71
STA. 0+00
 N = 405,000 (± 200')
 E = 2,200,800 (± 200')
 ± 400' West & ± 500' South of N.E. Cor. Sec. 1,
 T 29 N, R 10 E

Conventional Signs

County Line	-----	Culverts in Place	-----
Township or Range Line	-----	Culverts Required	-----
Section Line	-----	Drop Inlet	-----
New Right of Way Line	-----	Power Pole	-----
Present Right of Way Line	-----	Telephone or Telegraph Pole	-----
Wire Fence	-----	Right of Way Markers	-----
Corporate or City Limits	-----	Reference Stake for Hubs Only	-----
Property Line	-----	Marsh	-----
Traveled Way or P.E.	-----	Hedge	-----
Railroads	-----	Trees	-----
Base or Survey Line	-----	Ground Elevation	-----
Caution Symbol (combustible fluids under pressure)	-----	Grade Elevation	-----

Layout
 Scale 1" = One Mile

Total Net Length of Centerline = 3.688 Mi.

Coordinates are scaled from USGS Topographic Map
 Wittenberg Wisconsin for identification only and are referenced
 to the Wisconsin Coordinate System Central Zone.

APPROVED FOR MARATHON COUNTY

Date _____ Title _____

STATE OF WISCONSIN
 DEPARTMENT OF TRANSPORTATION
 DIVISION OF HIGHWAYS

Surveyor _____ District Checker _____
 Designer _____ C.O. Checker _____

Correct: _____

Date _____ District Engineer _____

Recommended for Approval: _____

Date _____ Chief of Facilities Development _____

Approved: _____

Date _____ State Highway Engineer _____

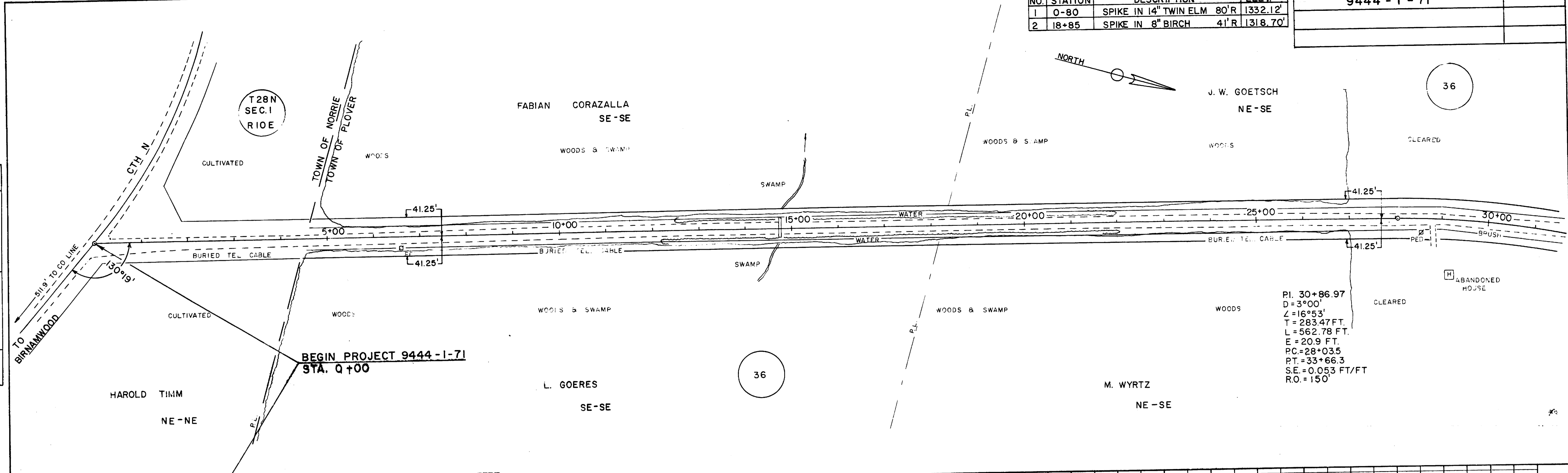
U.S. DEPARTMENT OF TRANSPORTATION
 FEDERAL HIGHWAY ADMINISTRATION
 REGION 5 WISCONSIN DIVISION

Approved: _____

Date _____ Division Engineer _____

BENCH MARKS			
NO.	STATION	DESCRIPTION	ELEV.
1	0+80	SPIKE IN 14" TWIN ELM 80'R	1332.12'
2	18+85	SPIKE IN 8" BIRCH 4'R	1318.70'

STATE PROJECT NUMBER	SHEET NO.
9444 - 1 - 71	



BEGIN PROJECT 9444-1-71
STA. 0+00

NET LENGTH OF CENTERLINE STA. 0+00 TO STA. 30+00 = 3,000 LINEAR FEET

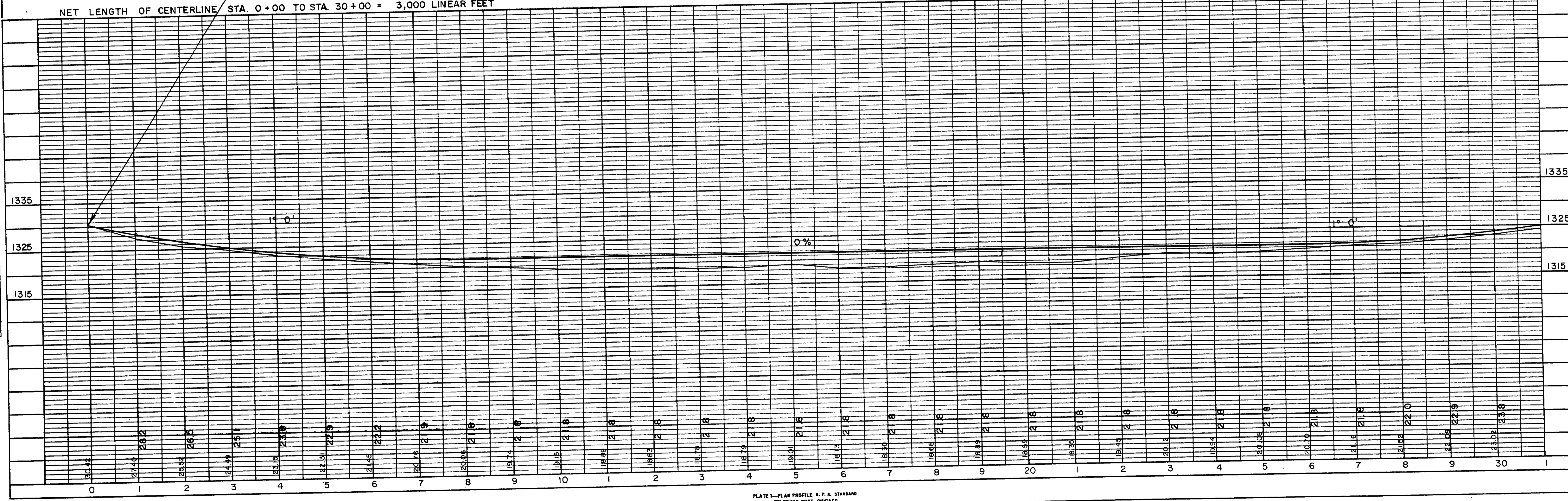


PLATE 1-PLAN PROFILE N. P. A. STANDARD
TELETYPE POST, CHICAGO

POLYMER CHECKED
 DATE: 11/19/19
 BY: [Signature]

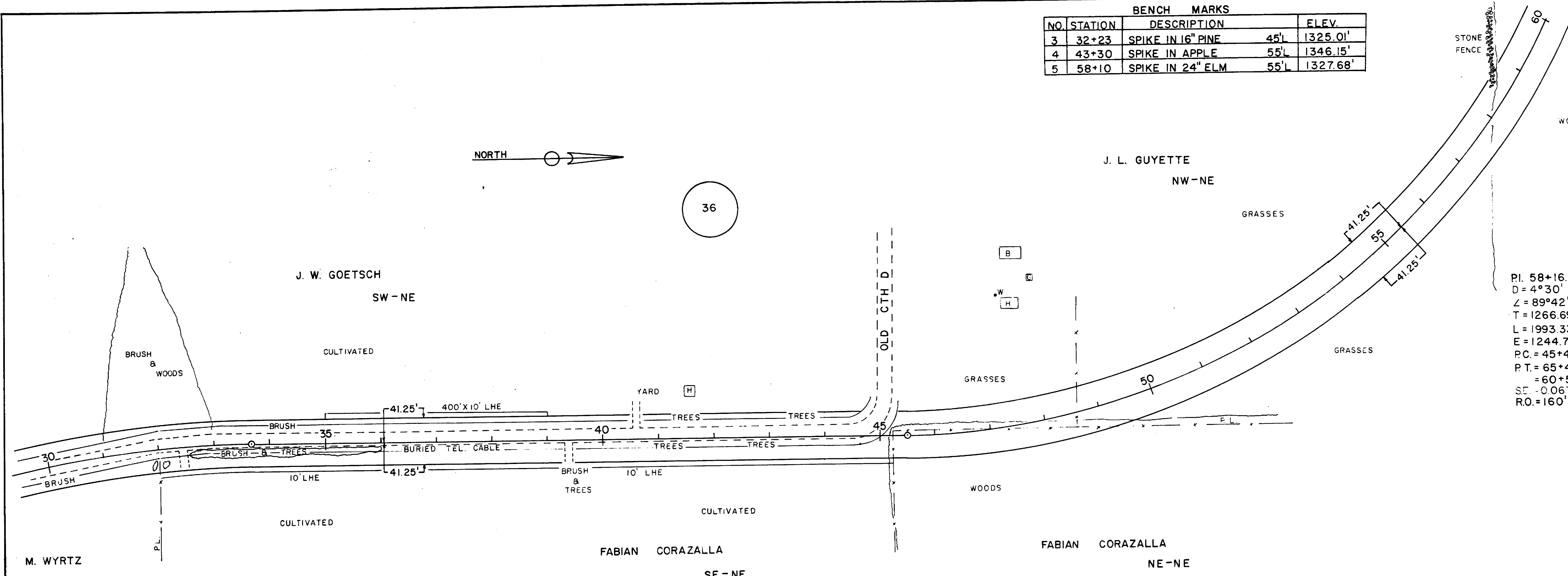
NOTE BOOK
 CHANGES CHECKED
 DATE: 11/19/19
 BY: [Signature]

BENCH MARKS			
NO.	STATION	DESCRIPTION	ELEV.
3	32+23	SPIKE IN 16" PINE	45' 1325.01'
4	43+30	SPIKE IN APPLE	55' 1346.15'
5	58+10	SPIKE IN 24" ELM	55' 1327.68'

STATE PROJECT NUMBER	SHEET NO.
9444 - 1 - 71	

NOTE BOOK NO. _____
 PLOTTED ALIGNMENT CHECKED BY: _____
 NO. _____

NOTES IN THIS NOTEBOOK CHECKED BY: _____
 NO. _____



NET LENGTH OF CENTERLINE STA. 30+00 TO STA. 60+00 = 3,000 LINEAR FEET

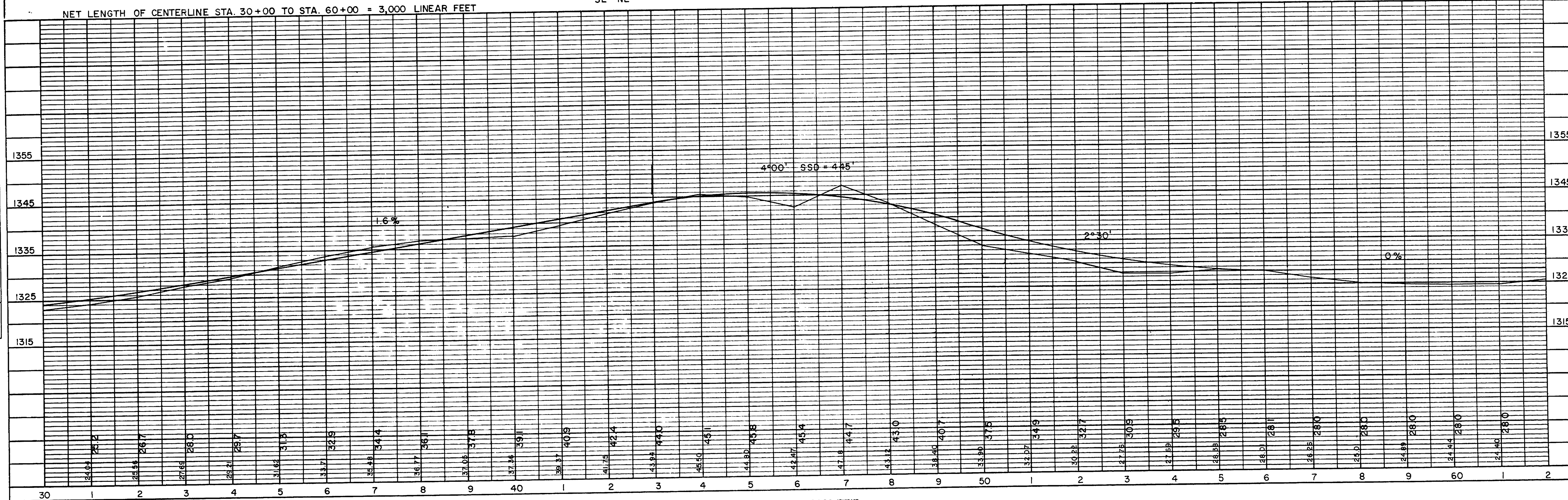
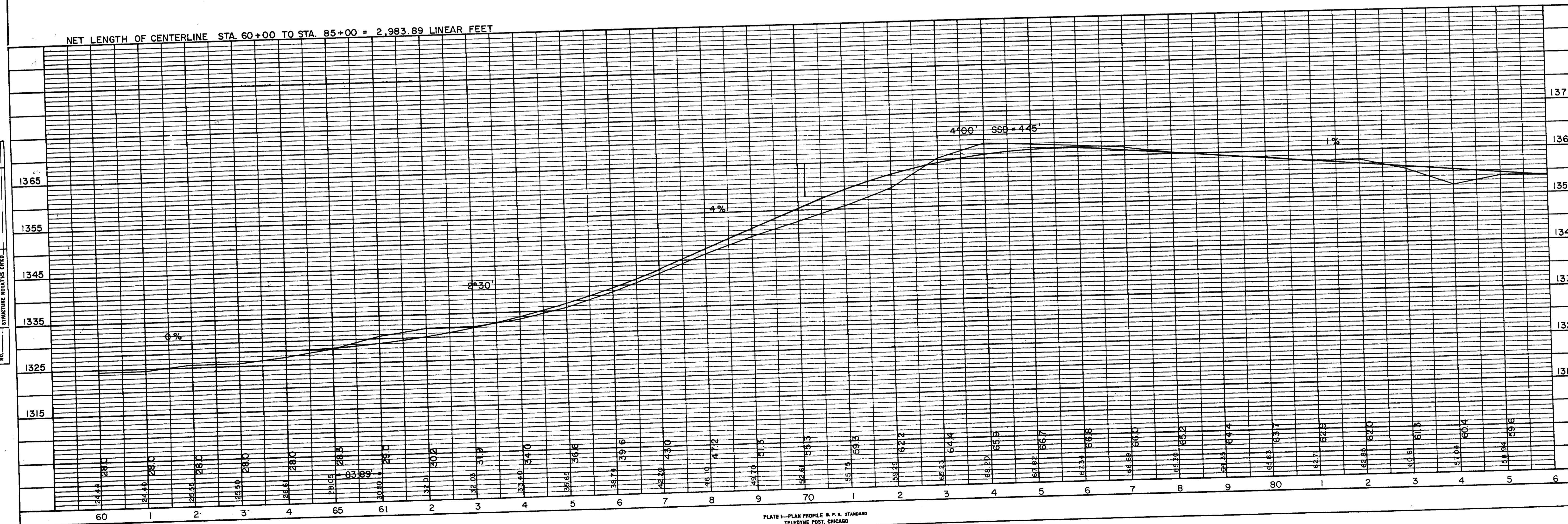
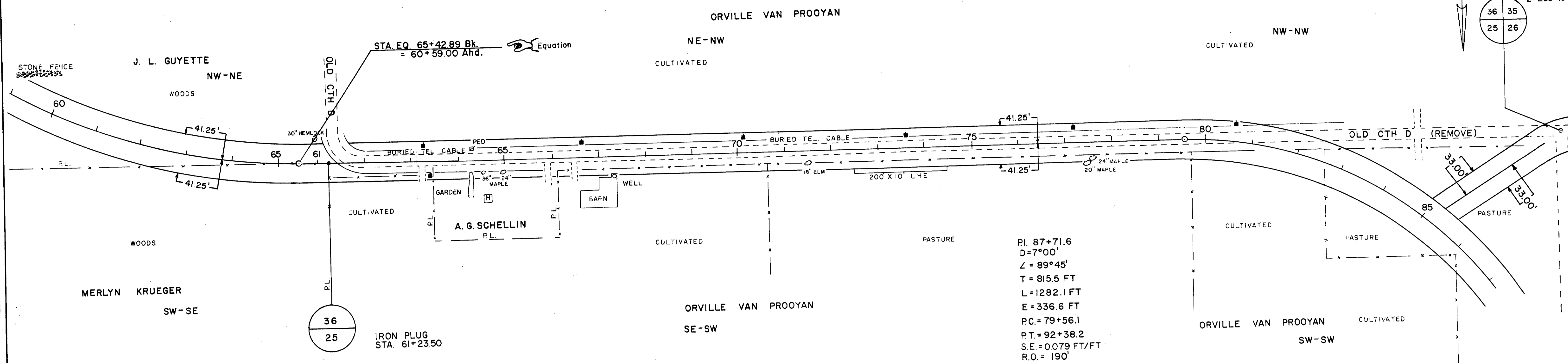


PLATE 1—PLAN PROFILE & P. R. STANDARD TELETYPE POST, CHICAGO

BENCH MARKS			
NO.	STATION	DESCRIPTION	ELEV.
6	60+65+80	SPIKE IN 30" HEMLOCK 55'L	1332.11'
7	77+47	SPIKE IN 20" MAPLE 44'R	1366.80'

STATE PROJECT NUMBER	SHEET NO.
9444-1-71	

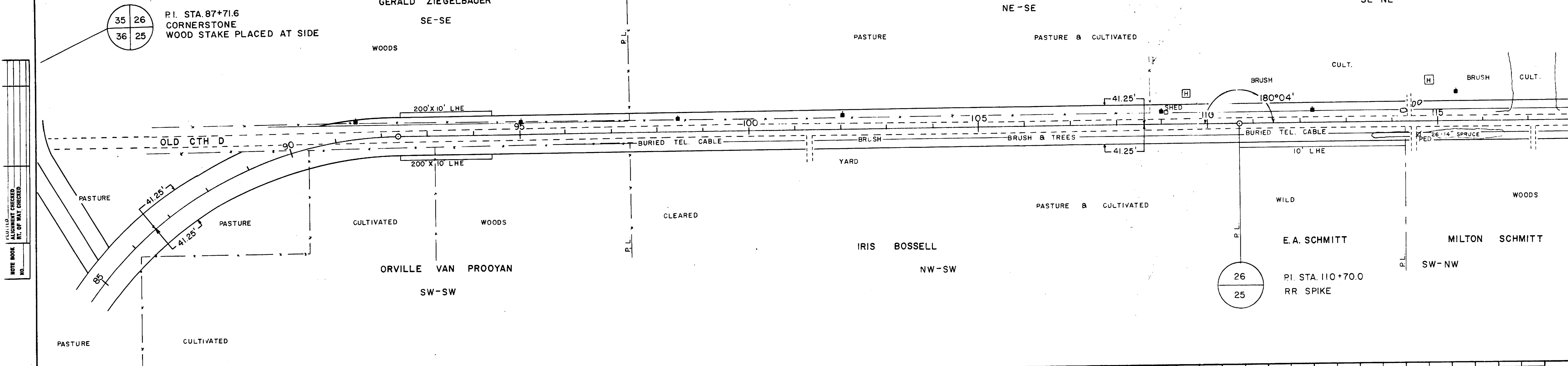
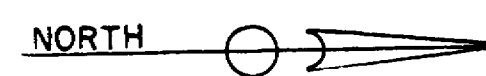


NOTE BOOK PLOTTED ALIGNMENT CHECKED REF. OF WAY CHECKED. NO.

NOTE BOOK PLOTTED CHANGES CHECKED. NO.

BENCH MARKS			
NO.	STATION	DESCRIPTION	ELEV.
8	97+55	SPIKE IN 12" ELM 60'R	1362.87'
9	110+20	SPIKE IN 18" TAMRACK 45'L	1348.00'

STATE	PROJECT NUMBER	SHEET NO.
9444	- 1 - 71	



NET LENGTH OF CENTERLINE STA. 85+00 TO STA. 115+00 = 3,000 LINEAR FEET

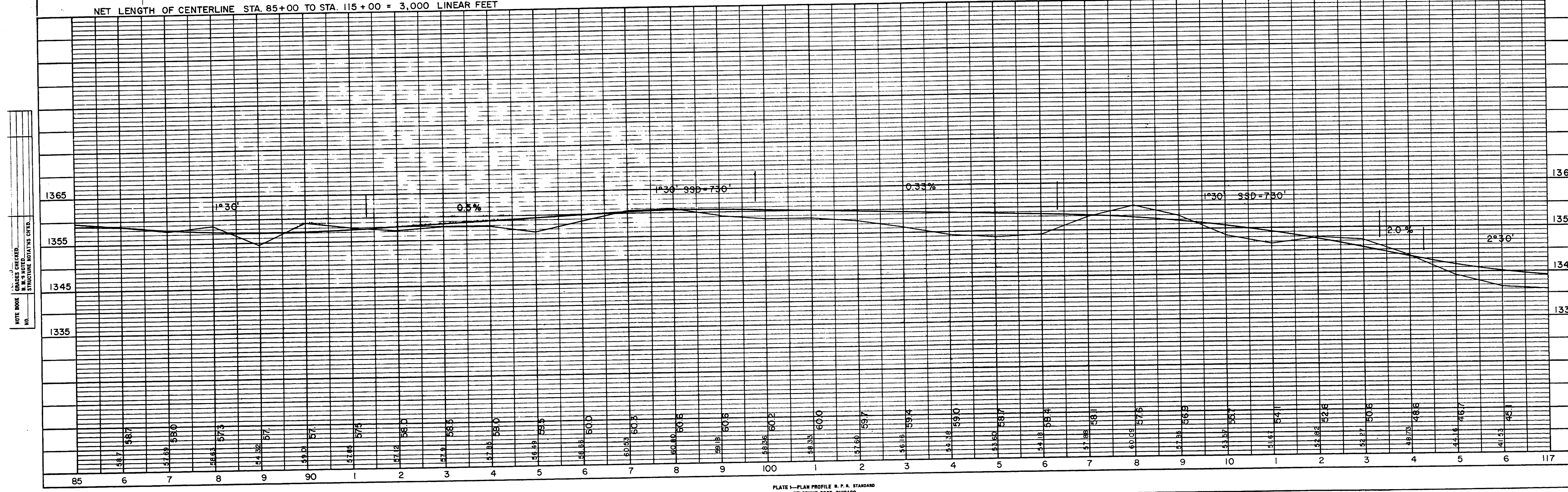


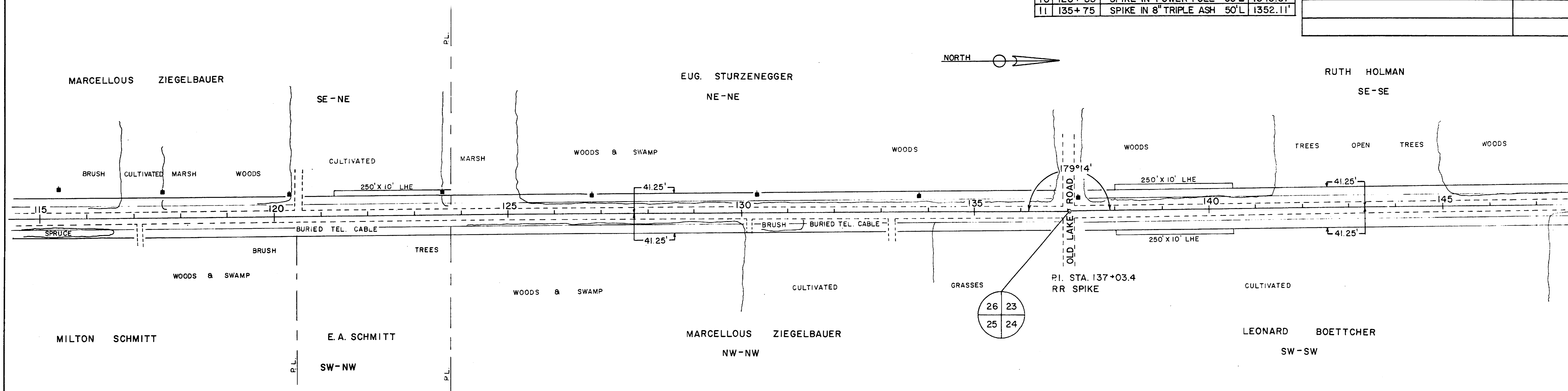
PLATE 1-PLAN PROFILE R. P. A. STANDARD TELETYPE POST, CHICAGO

NOTE BOOK NO. ALL DIMENSIONS CHECKED. RT. OF WAY CHECKED.

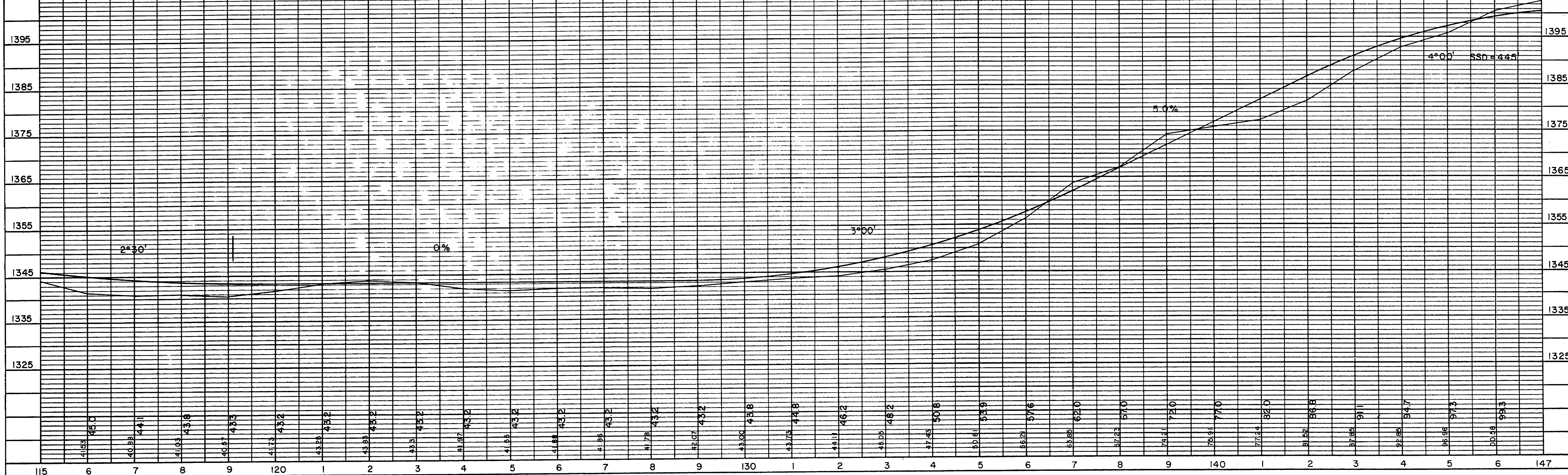
NOTE BOOK NO. GRADES CHECKED. STRUCTURE NOTATIONS CITED.

BENCH MARKS			
NO.	STATION	DESCRIPTION	ELEV.
10	120+35	SPIKE IN POWER POLE 60'L	1343.57'
11	135+75	SPIKE IN 8" TRIPLE ASH 50'L	1352.11'

STATE PROJECT NUMBER	SHEET NO.
9444 - 1 - 71	



NET LENGTH OF CENTERLINE STA. 115+00 TO STA. 145+00 = 3,000 LINEAR FEET

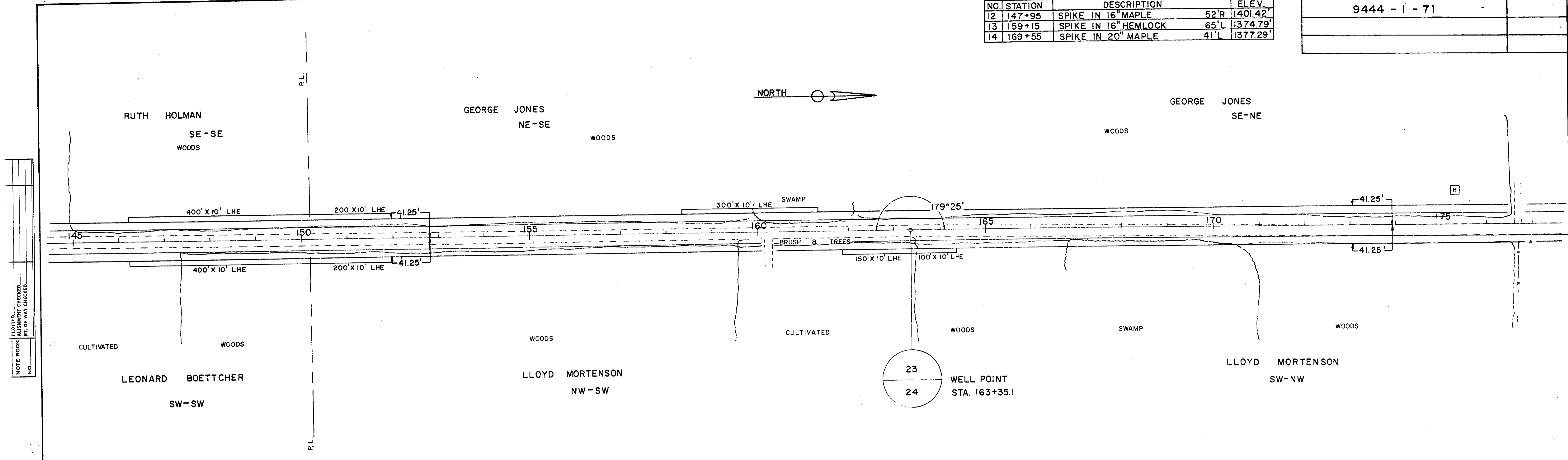


FACED ALIGNED CHECKED
 NOTE BOOK NO.

GRADES CHECKED
 STRUCTURE NOTING CHD.
 NOTE BOOK NO.

BENCH MARKS			
NO.	STATION	DESCRIPTION	ELEV.
12	147+95	SPIKE IN 16" MAPLE	52'R 1401.42'
13	159+15	SPIKE IN 16" HEMLOCK	65'L 1374.79'
14	169+55	SPIKE IN 20" MAPLE	41'L 1377.29'

STATE-PROJECT NUMBER	SHEET NO.
9444 - 1 - 71	



NET LENGTH OF CENTERLINE STA. 145+00 TO STA. 175+00 = 3,000 LINEAR FEET

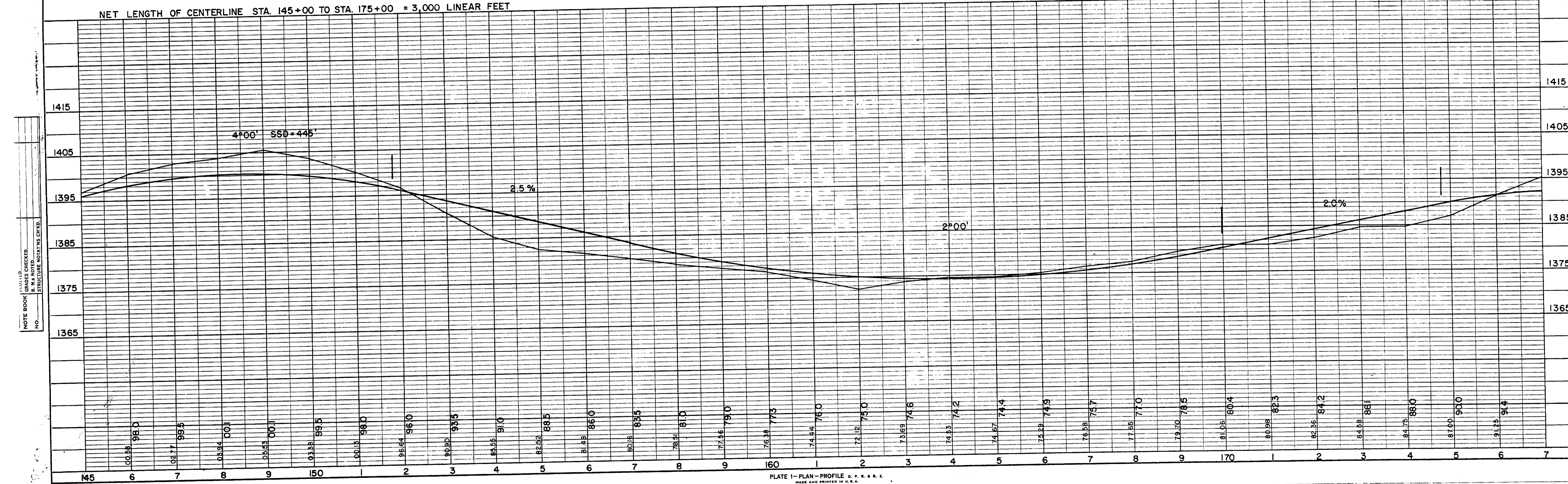


PLATE 1 - PLAN - PROFILE C. P. R. & E. MADE AND PRINTED IN U.S.A. CHARLES BRUNING COMPANY, INC.

NOTE BOOK ALIGNMENT CHECKED. REF. OF WAY CHECKED. NO.

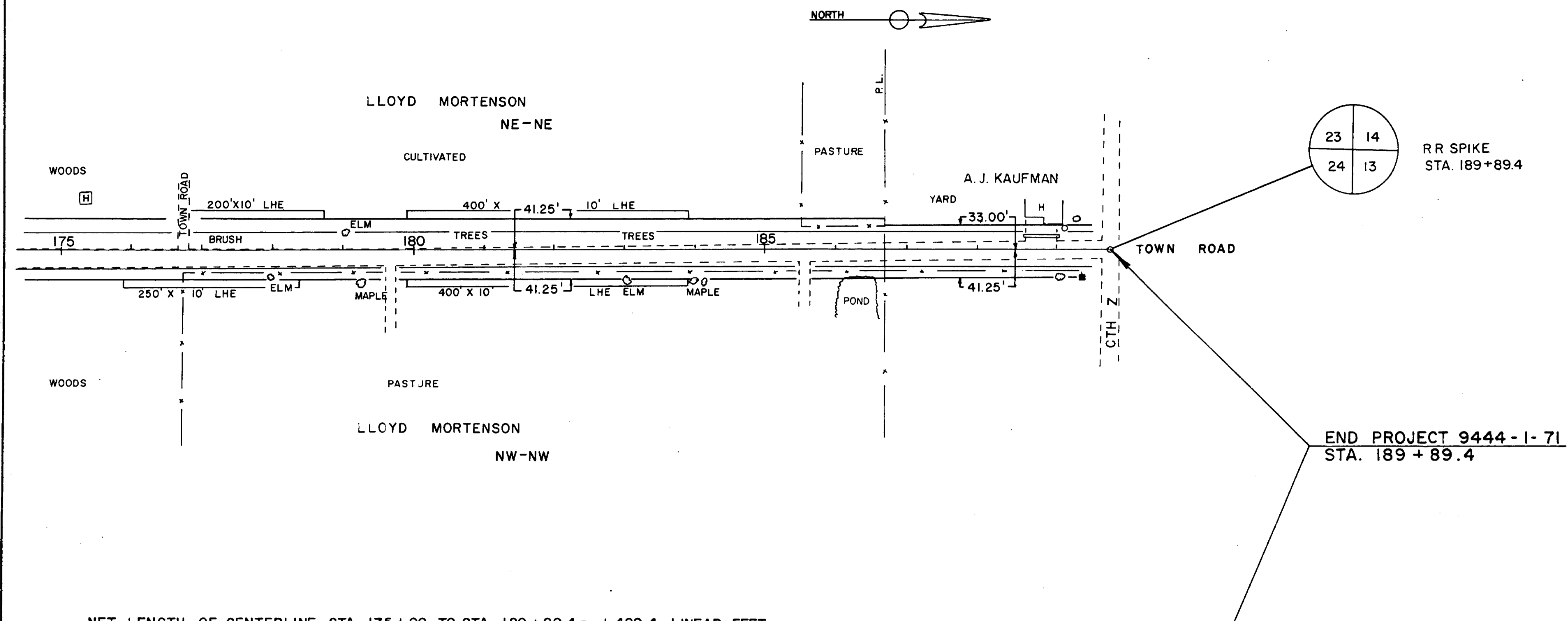
NOTE BOOK GRADES CHECKED. STRUCTURE NOTATIONS CHECKED. NO.

BENCH MARKS			
NO.	STATION	DESCRIPTION	ELEV.
15	189+15	N. END OF CULV. USGS-TBM 25'L	1384.21'

STATE PROJECT NUMBER	SHEET NO.
9444 - 1 - 71	

DIRECTLY
 FROM BOOK
 NO. 100
 NOTE BOOK
 GRADES CHECKED
 ALIGNMENT CHECKED
 RT. OF WAY CHECKED

PLOTTED
 FROM BOOK
 NO. 100
 NOTE BOOK
 GRADES CHECKED
 STRUCTURE NOT CHECKED



NET LENGTH OF CENTERLINE STA. 175+00 TO STA. 189+89.4 = 1,489.4 LINEAR FEET

