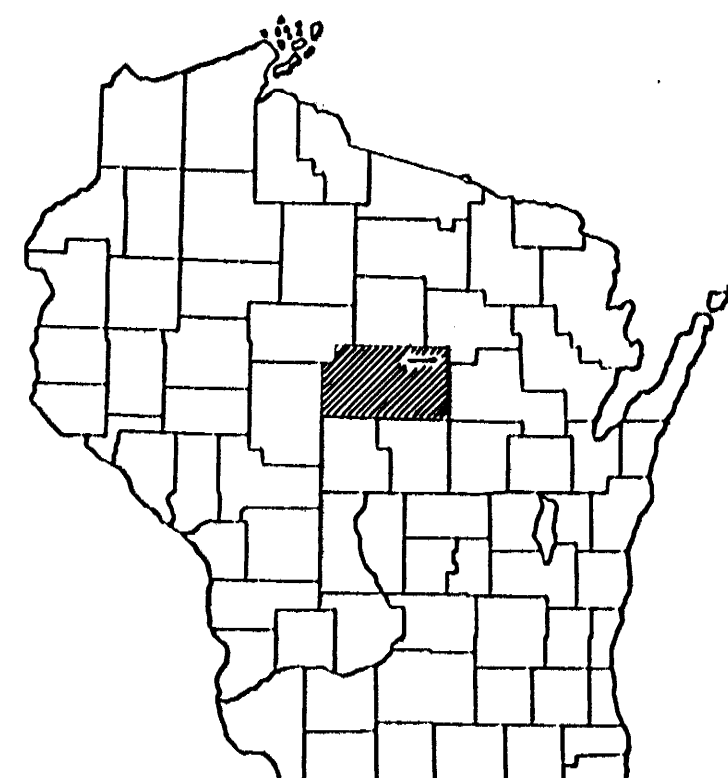


**INDEX OF SHEETS**

SHEET NO. 1	TITLE
SHEET NO. 1	TYPICAL CROSS SECTIONS
SHEET NO. 1	ESTIMATE OF QUANTITIES
SHEET NO.	MISCELLANEOUS QUANTITIES
SHEET NO.	RIGHT OF WAY PLAT
SHEET NO.	PLAN AND PROFILE STA. 198+21.7 TO STA. 559+92.2
SHEET NO.	STANDARD DETAILS
SHEET NO.	DRAINAGE STRUCTURES
SHEET NO.	CROSS SECTIONS



**STATE OF WISCONSIN  
STATE HIGHWAY COMMISSION OF WISCONSIN**

PLAN AND PROFILE OF PROPOSED

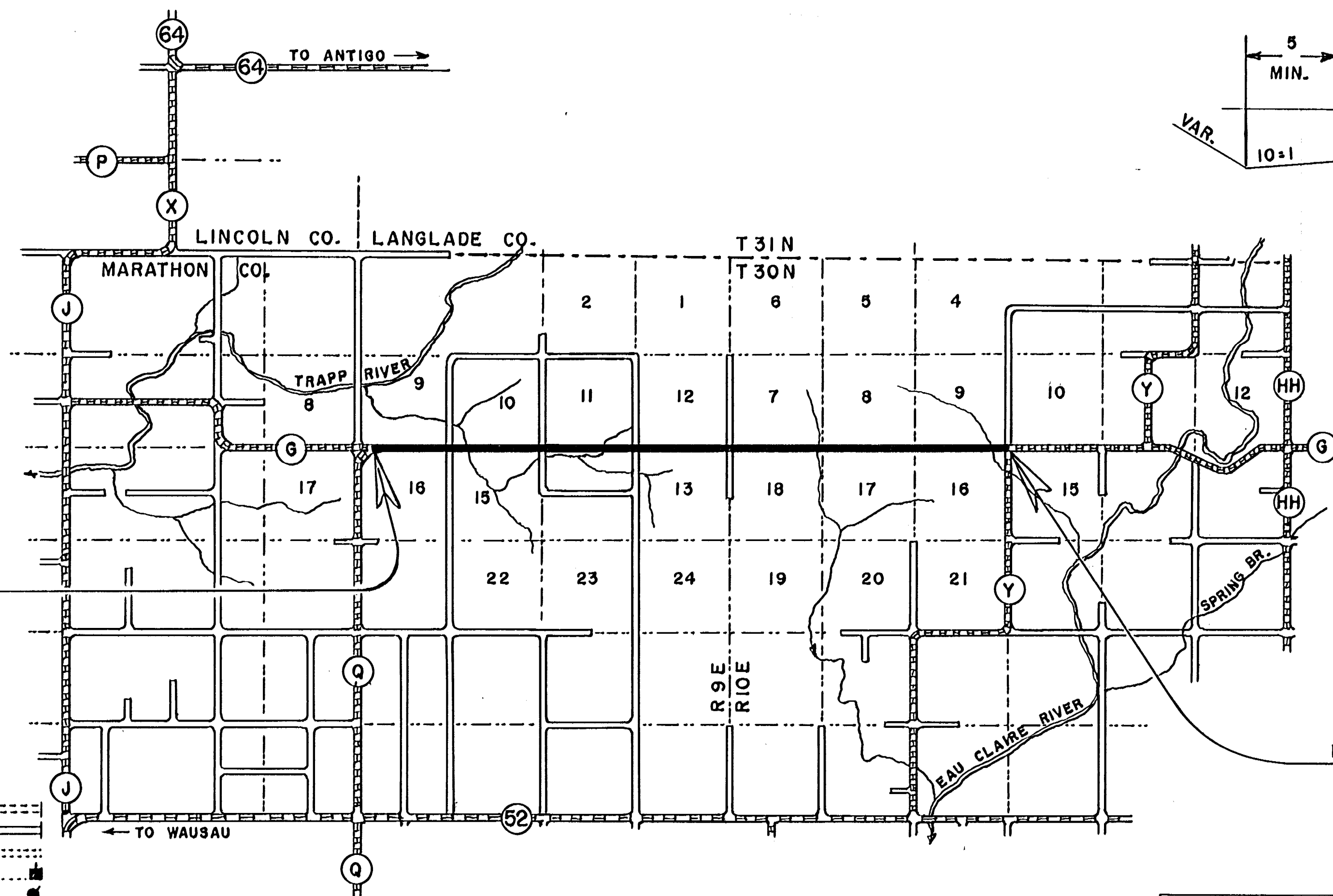
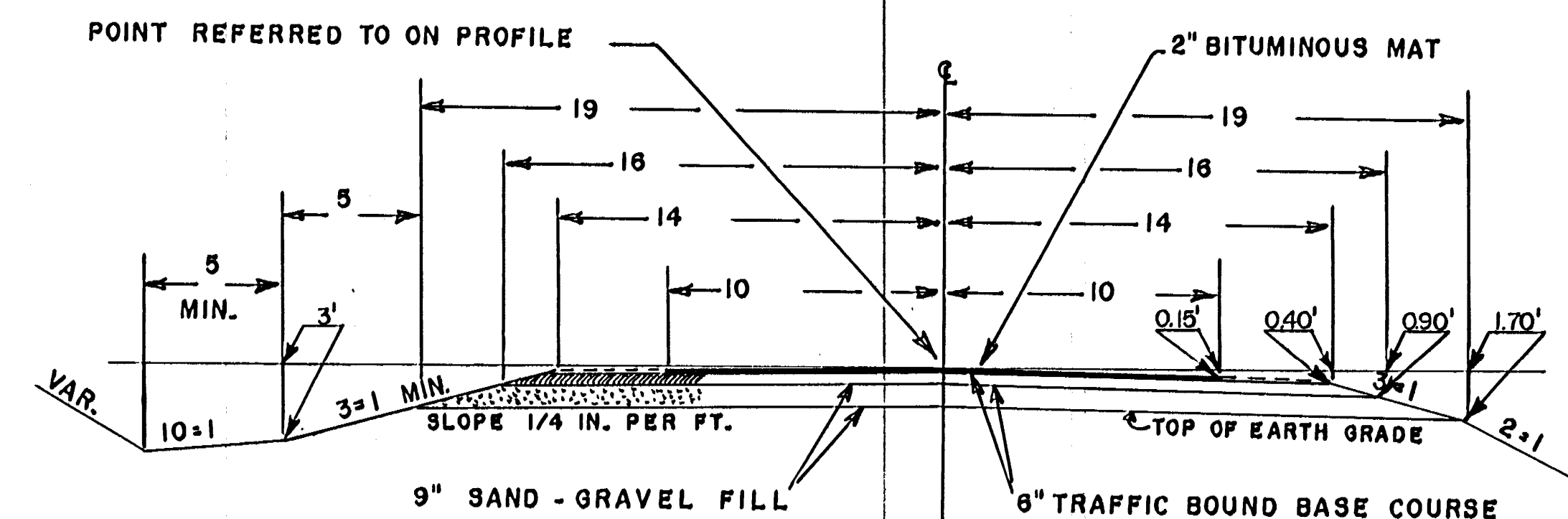
**C.T.H. "Q" — C.T.H. "Y" ROAD**

C.T.H. "G"  
MARATHON COUNTY

**PROJECT S1164(I)**

SCALES { PLAN 1 IN. = 100 FT.  
PROFILE HOR. 1 IN. = 100 FT. VERT. 1 IN. = 10 FT.

COUNTY AND HIGHWAY	ROUTE AND SECTION	CLASS AND AGREEMENT		FEDERAL DIVISION OFFICE	SHEET NUMBER	TOTAL SHEETS
		STATE	FEDERAL			
376	1164.0		11.1	WIS. 4	1	



**BEGINNING OF PROJECT**  
STA. 198 + 21.7  
= END OF C.T.H. "Q"  
557.4' EAST OF SW COR. SEC. 9, T30N, R9E

**END OF PROJECT**  
STA. 559 + 92.2  
163' NORTH OF SE COR. SEC. 9, T30N, R10E

CONVENTIONAL SIGNS	
STATE LINE	— — — — —
COUNTY LINE	— — — — —
TOWNSHIP OR RANGE LINE	— — — — —
SECTION LINE	— — — — —
NEW RIGHT OF WAY LINE	— — — — —
PRESENT RIGHT OF WAY LINE	— — — — —
WIRE FENCE { WOVEN	— — — — —
{ BARBED	— — — — —
LOT LINE	— — — — —
CORPORATE OR CITY LIMITS	— — — — —
PROPERTY LINE	— — — — —
TRAVELED WAY OR R.E.	— — — — —
RAILROADS	— — — — —
BASE OR SURVEY LINE	— — — — —
CULVERTS IN PLACE	— — — — —
CULVERTS REQUIRED	— — — — —
DROP INLET	— — — — —
POWER POLE	— — — — —
TELEPHONE OR TELEGRAPH POLE	— — — — —
RIGHT OF WAY MARKERS	— — — — —
REFERENCE STAKE FOR HUBS ONLY	— — — — —
MARSH	— — — — —
HEDGE	— — — — —
TREES	— — — — —
GROUND ELEVATION	DATUM LINE 73.9
GRADE ELEVATION	DATUM LINE 75.6

**LAYOUT**  
SCALE 1 MILE  
TOTAL NET LENGTH OF CENTERLINE = 6.851 MI.

ITEM NO.	QUANTITY	UNIT	ITEM
2203-1	1340	CU. YD.	GRAVEL OR CRUSHED STONE BASE COURSE
2310-1	362	STA.	PREP OF ROADBED FOR BIT. SURFACE
2313-1	88,420	SQ. YD.	BITUMINOUS ROAD MIX SURFACE
2313-2	6,140	CU. YD.	AGGREGATES FOR BIT ROAD MIX SURFACE
2313-3	138,150	GAL.	BITUMINOUS MATERIAL FOR SURFACE COURSE

THIS PROJECT IS TO BE EXECUTED UNDER THE STANDARD SPECIFICATIONS FOR ROAD AND BRIDGE CONSTRUCTION OF THE STATE HIGHWAY COMMISSION OF WISCONSIN - EDITION OF 1957, APPROVED AUGUST 9, 1957, AND SPECIAL PROVISIONS AS ATTACHED TO THE PROPOSALS.

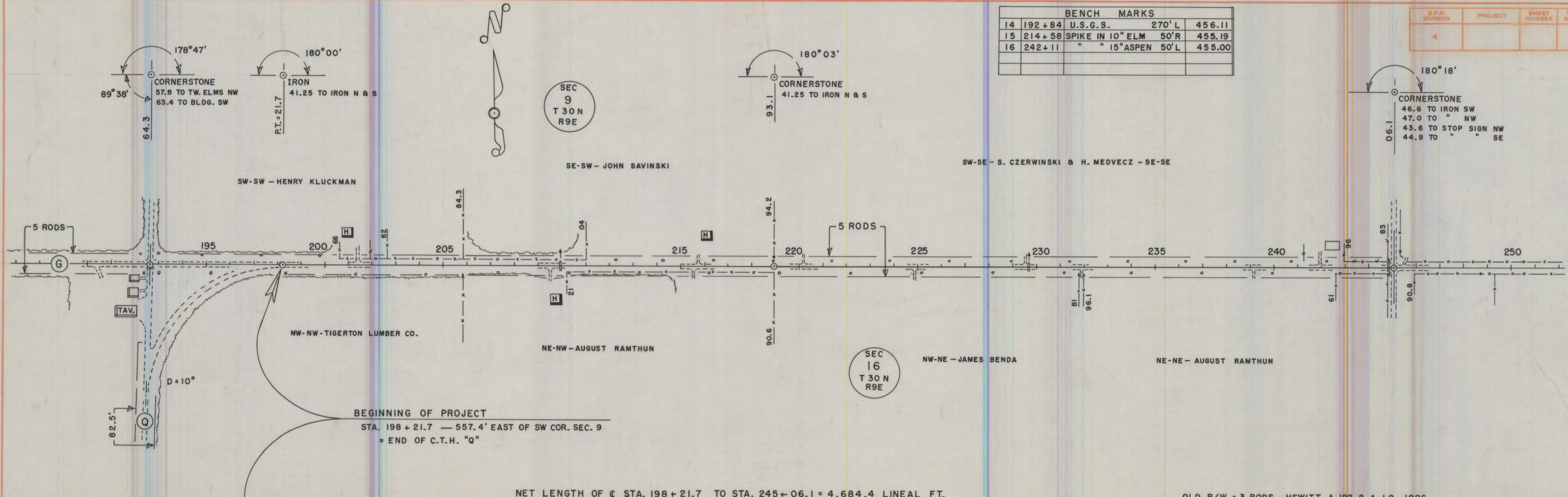
STATE HIGHWAY COMMISSION OF WISCONSIN MADISON, WIS.	
SURVEYOR	C. E. C. NOTE BOOK M-57
DIVISION COMPUTER	C. A. L. M. O. CHECKER
DISTRICT CHECKER	CORRECT
CORRECT:	
DATE	DISTRICT ENGINEER
RECOMMENDED FOR APPROVAL:	
DATE	ENGINEER OF DESIGN
APPROVED:	
DATE	STATE HIGHWAY ENGINEER
DEPARTMENT OF COMMERCE BUREAU OF PUBLIC ROADS	
APPROVED:	
DATE	
	DISTRICT ENGINEER

BENCH MARKS				
14	192+84	U.S.G.S.	270' L	456.11
15	214+58	SPIKE IN 10" ELM	50'R	455.19
16	242+11	" " 15" ASPEN	50'L	455.00

D.P.L. DIVISION	PROJECT	SHEET NUMBER	TOTAL SHEETS
4			

DATE: 1-59  
 BY: C. E. C.  
 SURVEYED, PLOTTED, PLUMBED, CHECKED, REVISIONS:  
 PLAN

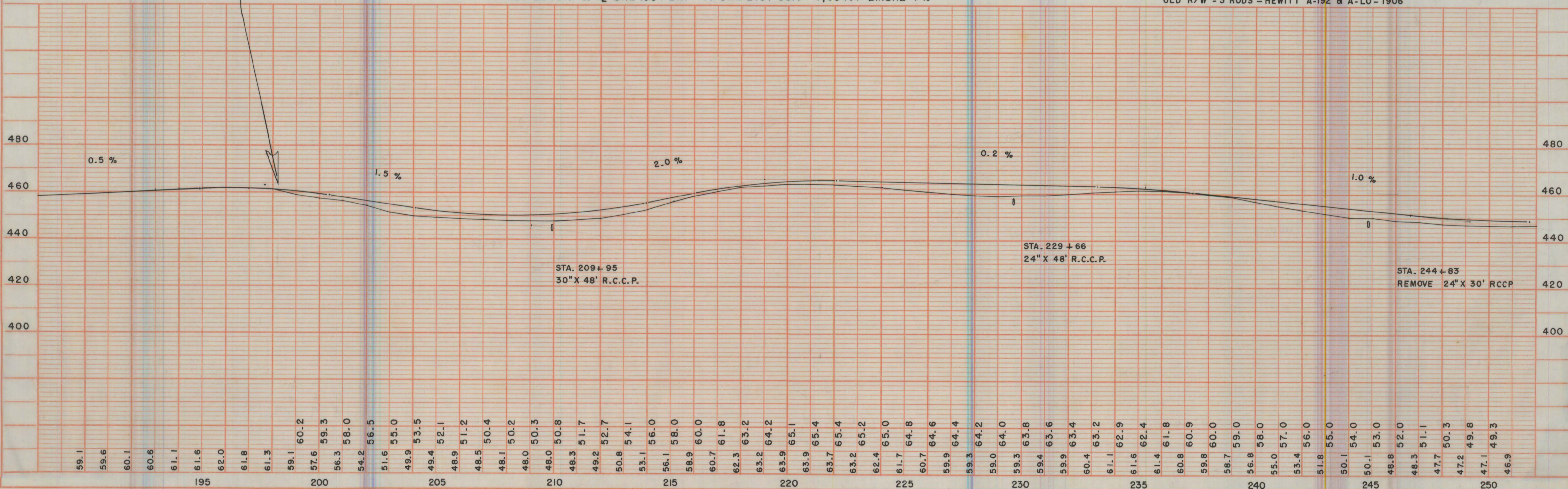
DATE: 12-58  
 BY: C. E. C.  
 SURVEYED, PLOTTED, PLUMBED, CHECKED, REVISIONS:  
 PROFILE



BEGINNING OF PROJECT  
 STA. 198+21.7 — 557.4' EAST OF SW COR. SEC. 9  
 = END OF C.T.H. "Q"

NET LENGTH OF C STA. 198+21.7 TO STA. 245+06.1 = 4,684.4 LINEAL FT.

OLD R/W = 3 RODS - HEWITT A-192 & A-10-1906



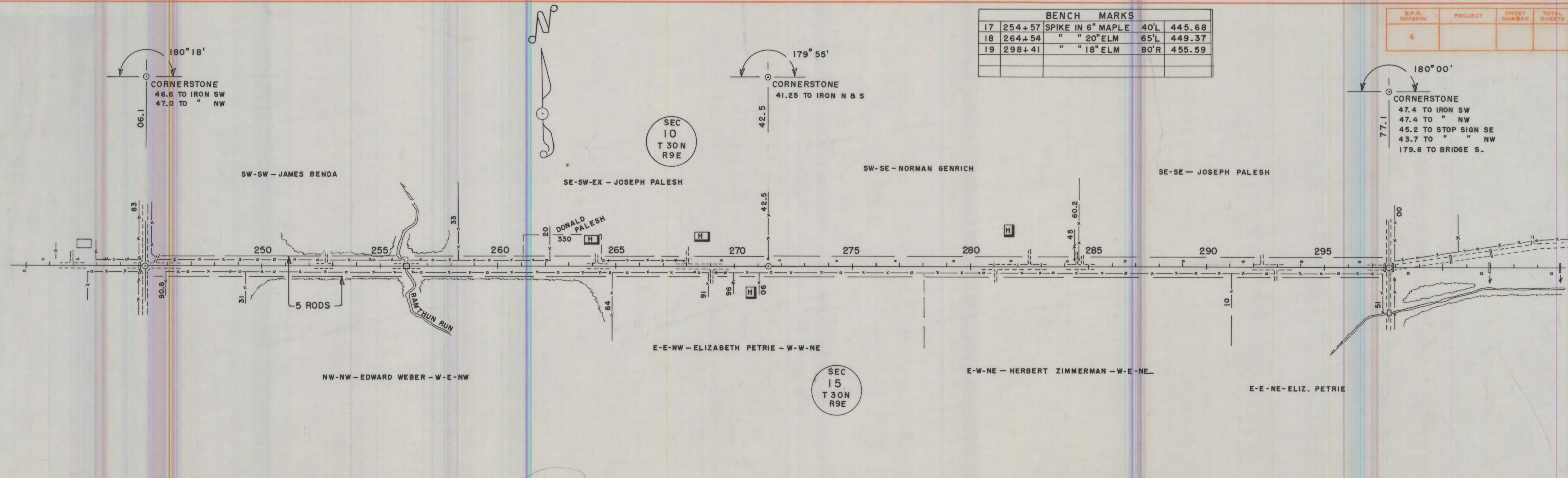
C.T.H. "G" - HEWITT

BENCH MARKS				
17	254+57	SPIKE IN 6" MAPLE	40'L	445.68
18	264+54	" " 20" ELM	65'L	449.37
19	298+41	" " 18" ELM	80'R	455.59

S.P.R. DIVISION	PROJECT	SHEET NUMBER	TOTAL SHEETS
4			

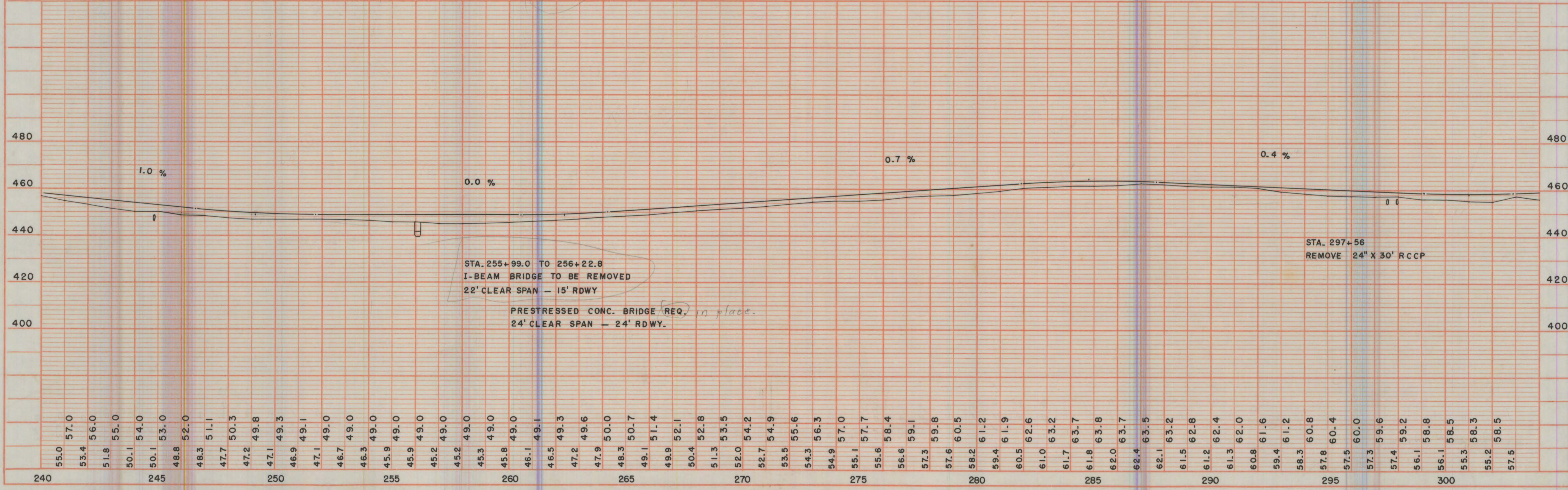
DATE: 1-59  
 BY: C.E.C.  
 CHECKED: C.E.C.  
 NOTE: BOOK NO. 1-59

DATE: 12-58  
 BY: C.E.C.  
 CHECKED: C.E.C.  
 NOTE: BOOK NO. 1-58



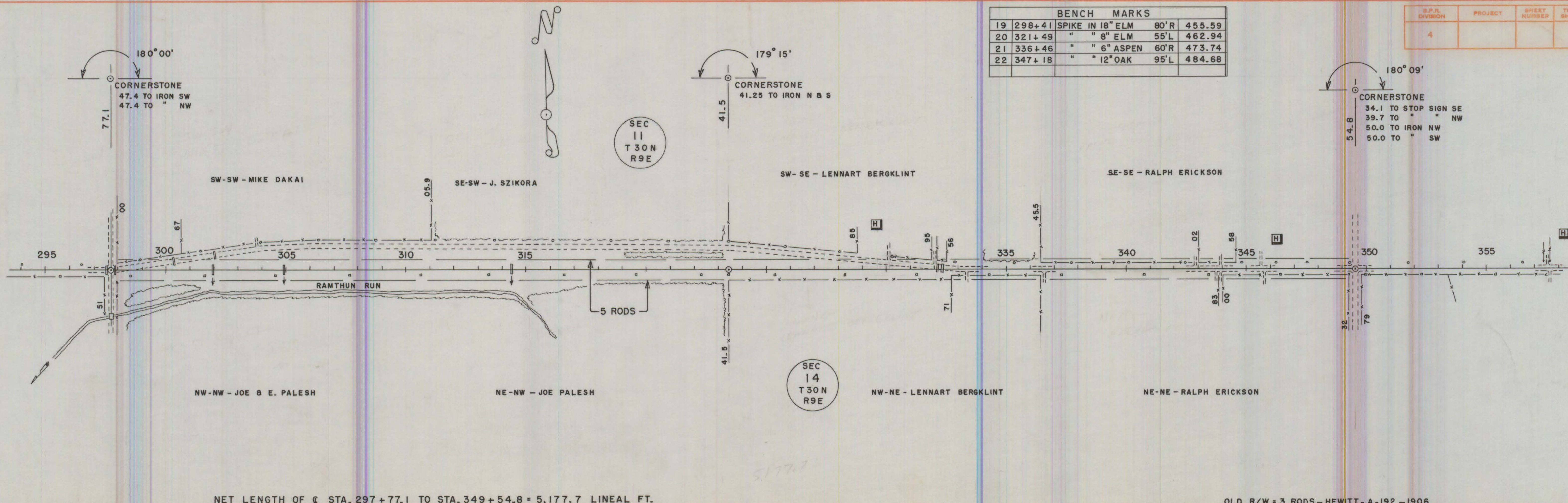
NET LENGTH OF C STA. 245+06.1 TO STA. 297+77.1 = 5,271.0 LINEAL FT.

OLD R/W = 3 RODS - HEWITT - A-73 & A-192 - 1906



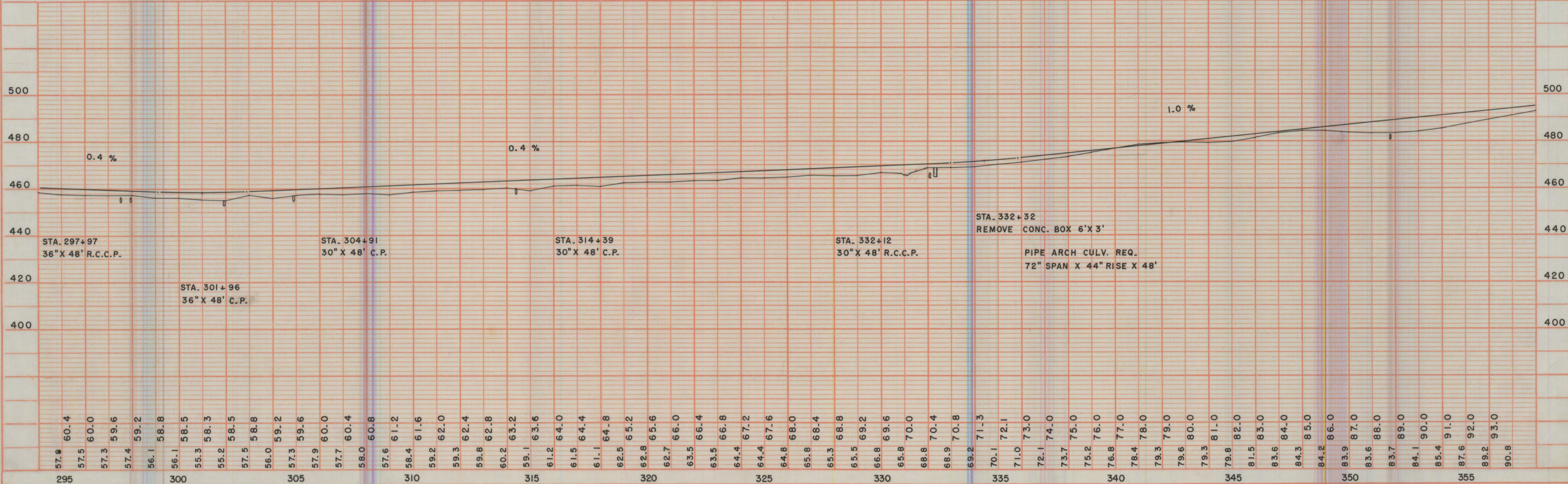
BENCH MARKS				
19	298+41	SPIKE IN 18" ELM	80'R	455.59
20	321+49	" " 8" ELM	55'L	462.94
21	336+46	" " 6" ASPEN	60'R	473.74
22	347+18	" " 12" OAK	95'L	484.68

S.P.R. DIVISION	PROJECT	SHEET NUMBER	TOTAL SHEETS
4			



NET LENGTH OF C STA. 297+77.1 TO STA. 349+54.8 = 5,177.7 LINEAL FT.

OLD R/W = 3 RODS - HEWITT - A-192 - 1906



DATE: 1-59  
BY: C. E. C.  
SURVEYED, PLOTTED, CHECKED, & M.S. ADDED. NOTE BOOK NO. OF MAY BE CHECKED.

DATE: 12-58  
BY: C. E. C.  
PROFILE SURVEYED, PLOTTED, CHECKED, & M.S. ADDED. STRUCTURE NOTATION USED.

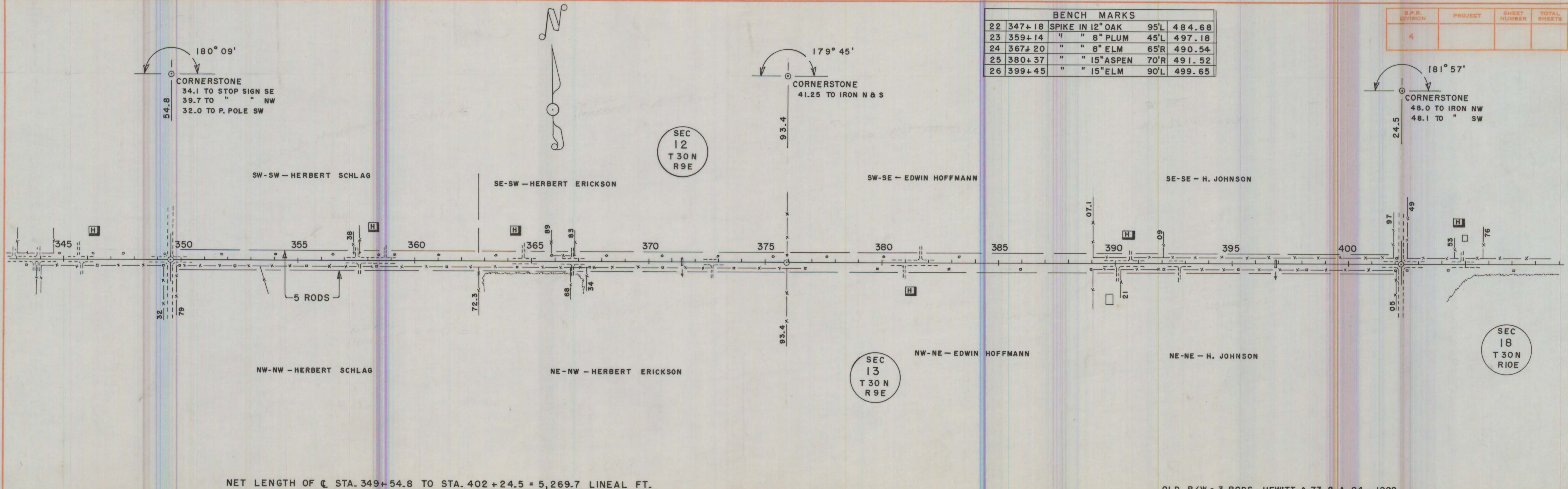
DATE 1-59  
 BY C.E.C.  
 CHECKED BY  
 NO.

DATE 12-58  
 BY C.E.C.  
 CHECKED BY  
 NO.

PROFILE  
 CHECKED  
 PLOTTED  
 CHANGES CHECKED  
 P.M.'S NOTED  
 STRUCTURE NOTATIONS CHECKED

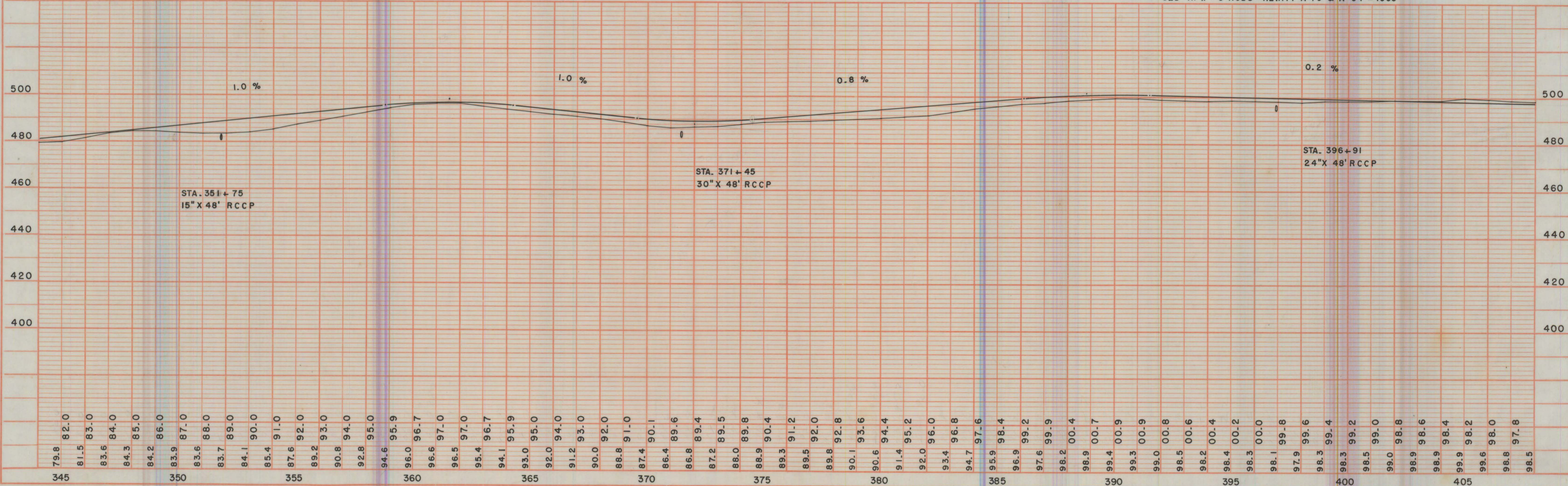
BENCH MARKS				
22	347+18	SPIKE IN 12" OAK	95'L	484.68
23	359+14	" " 8" PLUM	45'L	497.18
24	367+20	" " 8" ELM	65'R	490.54
25	380+37	" " 15" ASPEN	70'R	491.52
26	399+45	" " 15" ELM	90'L	499.65

S.P.R. DIVISION	PROJECT	SHEET NUMBER	TOTAL SHEETS
4			



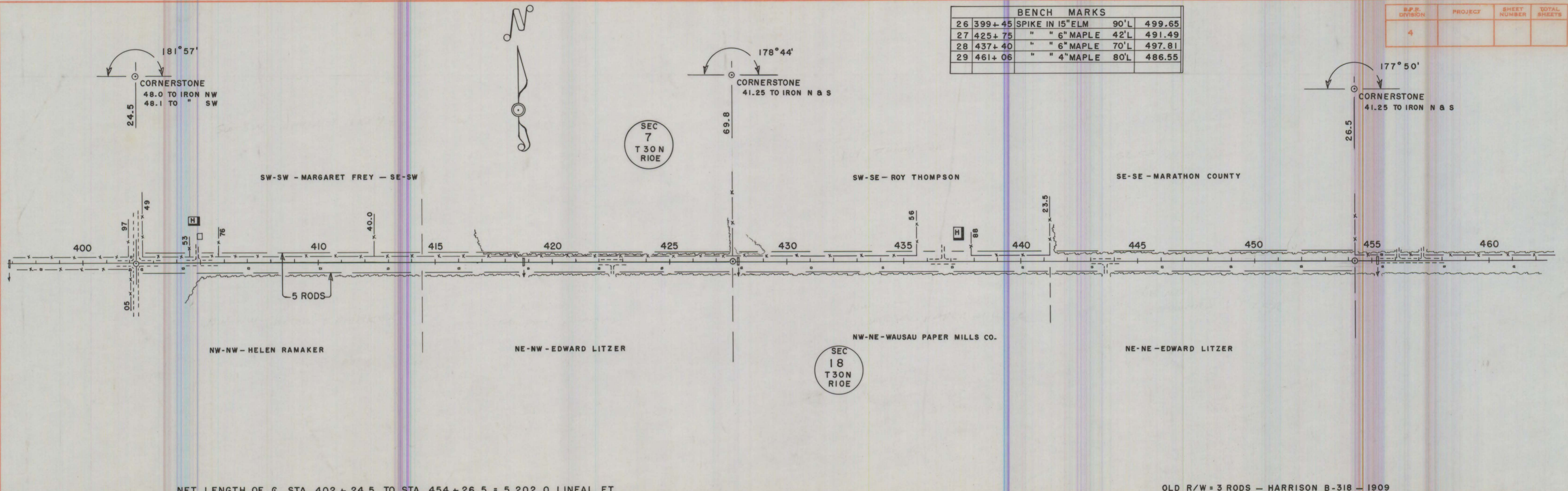
NET LENGTH OF C. STA. 349+54.8 TO STA. 402+24.5 = 5,269.7 LINEAL FT.

OLD R/W = 3 RODS - HEWITT A-73 & A-94 - 1900



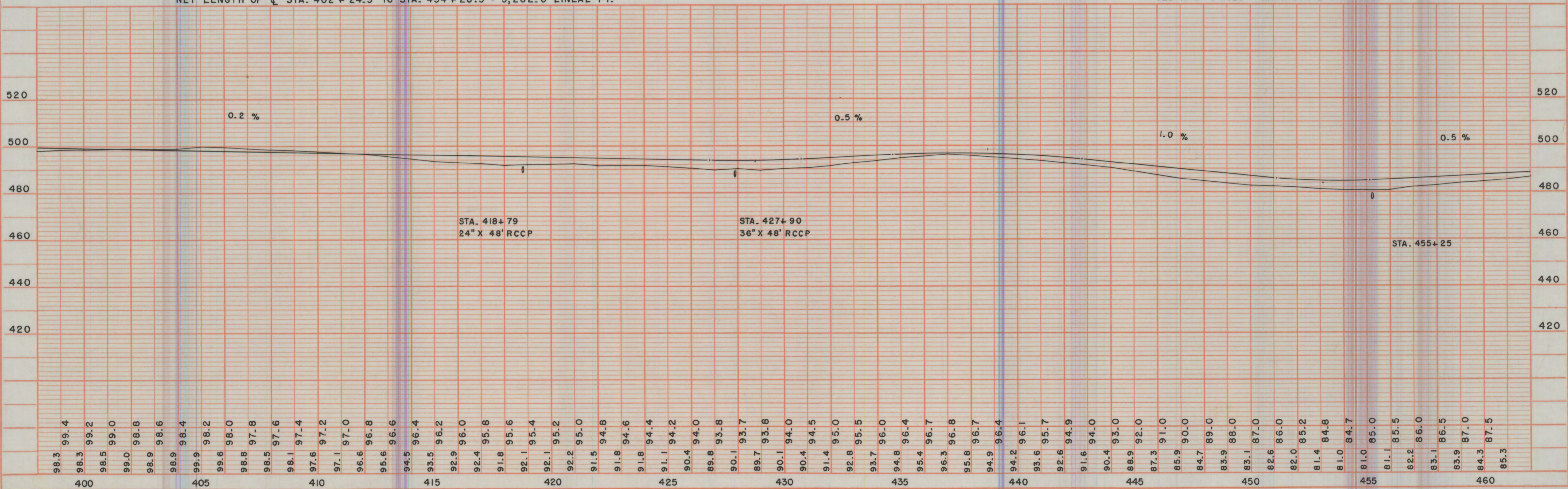
BENCH MARKS				
26	399+45	SPIKE IN 15" ELM	90'L	499.65
27	425+75	" " 6" MAPLE	42'L	491.49
28	437+40	" " 6" MAPLE	70'L	497.81
29	461+06	" " 4" MAPLE	80'L	486.55

S.P.C. DIVISION	PROJECT	SHEET NUMBER	TOTAL SHEETS
4			



NET LENGTH OF C STA. 402 + 24.5 TO STA. 454 + 26.5 = 5,202.0 LINEAL FT.

OLD R/W = 3 RODS - HARRISON B-318 - 1909



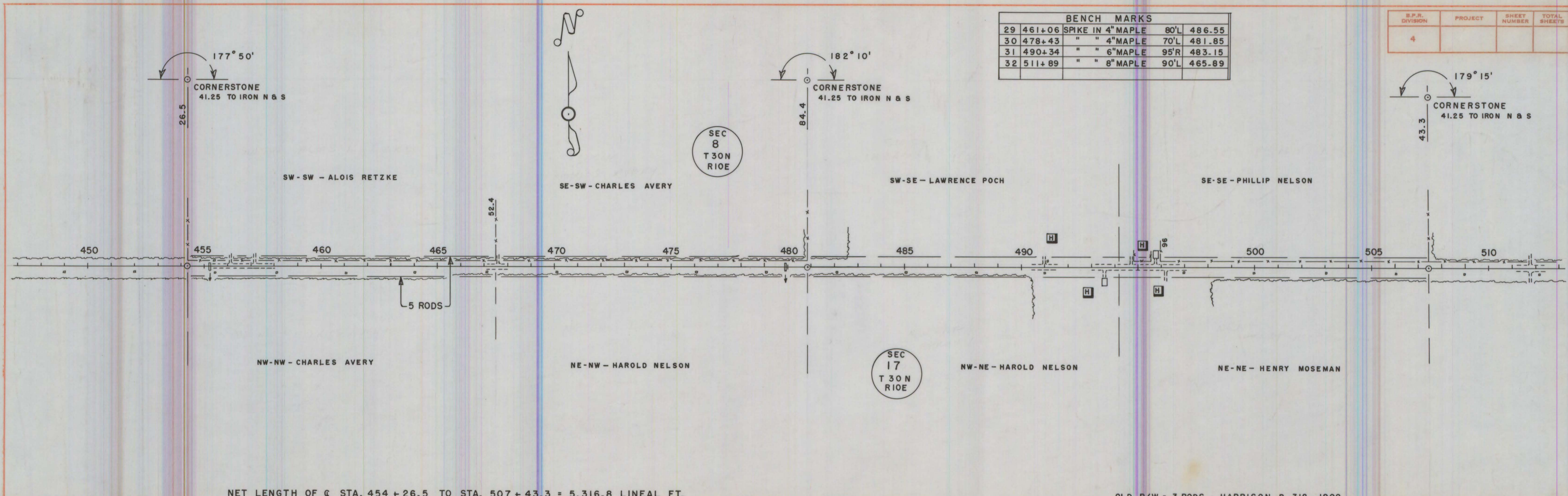
DATE: 1-59  
BY: C.E.C.  
CHECKED: [Signature]  
DATE: [Signature]

DATE: 1-59  
BY: C.E.C.  
CHECKED: [Signature]  
DATE: [Signature]

C.T.H. "G" - HARRISON

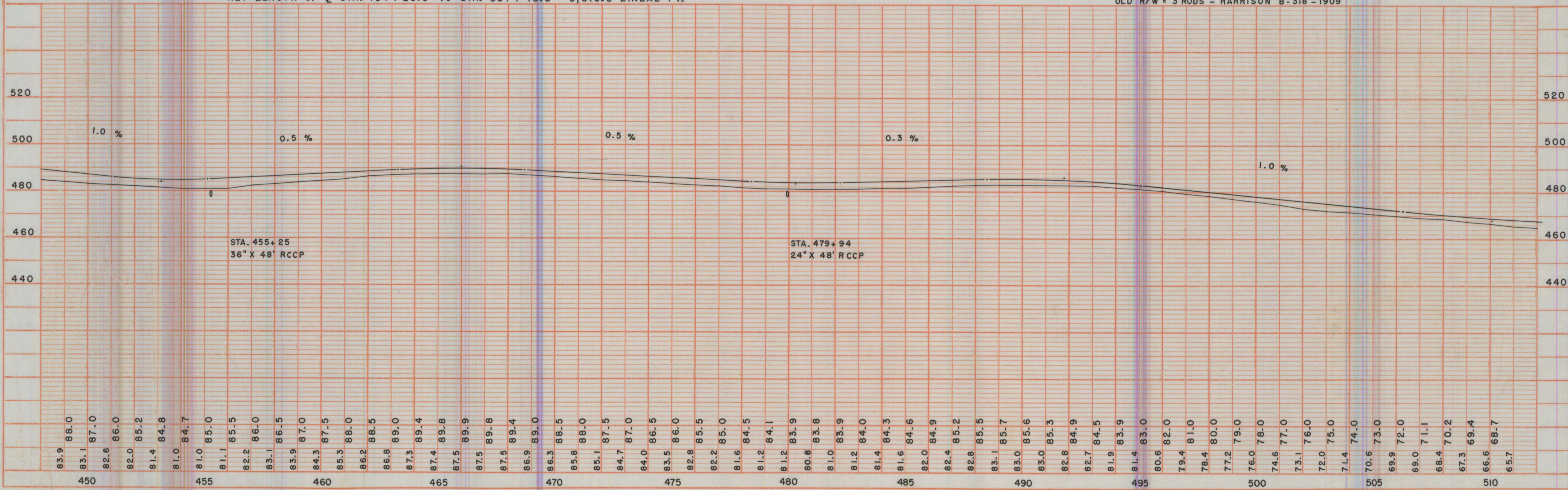
BENCH MARKS				
29	461+06	SPIKE IN 4" MAPLE	80'L	486.55
30	478+43	" " 4" MAPLE	70'L	481.85
31	490+34	" " 6" MAPLE	95'R	483.15
32	511+89	" " 8" MAPLE	90'L	465.89

S.P.R. DIVISION	PROJECT	SHEET NUMBER	TOTAL SHEETS
4			



NET LENGTH OF C STA. 454 + 26.5 TO STA. 507 + 43.3 = 5,316.8 LINEAL FT.

OLD R/W = 3 RODS - HARRISON B-318-1909



DATE: 2-59  
 BY: C.E.C.  
 PLAN: SURVEYED, PLOTTED, ALIGNED, CHECKED, SET OF WAY CHECKED, NO.

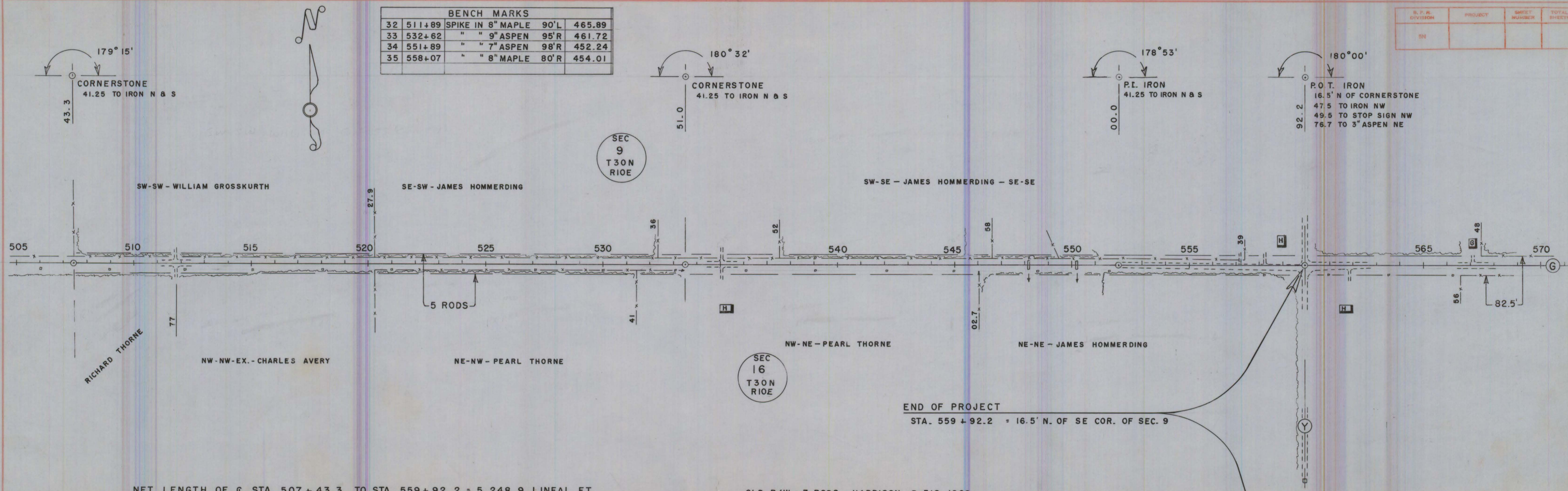
DATE: 2-59  
 BY: C.E.C.  
 PROFILE: SURVEYED, PLOTTED, GRADES CHECKED, STRUCTURE NOTATION OK'D, NO.

DATE: 2-59  
 BY: C.E.C.  
 CHECKED: C.E.C.  
 PLANNED: C.E.C.  
 SURVEYED: C.E.C.  
 NOTE: NOTE BOOK NO. 100

DATE: 2-59  
 BY: C.E.C.  
 CHECKED: C.E.C.  
 PROFILED: C.E.C.  
 NOTE: NOTE BOOK NO. 100

BENCH MARKS				
32	511+89	SPIKE IN 8" MAPLE	90'L	465.89
33	532+62	" " 9" ASPEN	95'R	461.72
34	551+89	" " 7" ASPEN	98'R	452.24
35	558+07	" " 8" MAPLE	80'R	454.01

R. F. D. DIVISION	PROJECT	SHEET NUMBER	TOTAL SHEETS
SN			



NET LENGTH OF  $\bar{c}$  STA. 507 + 43.3 TO STA. 559 + 92.2 = 5,248.9 LINEAL FT.

OLD R/W = 3 RODS - HARRISON - B-318 - 1909

