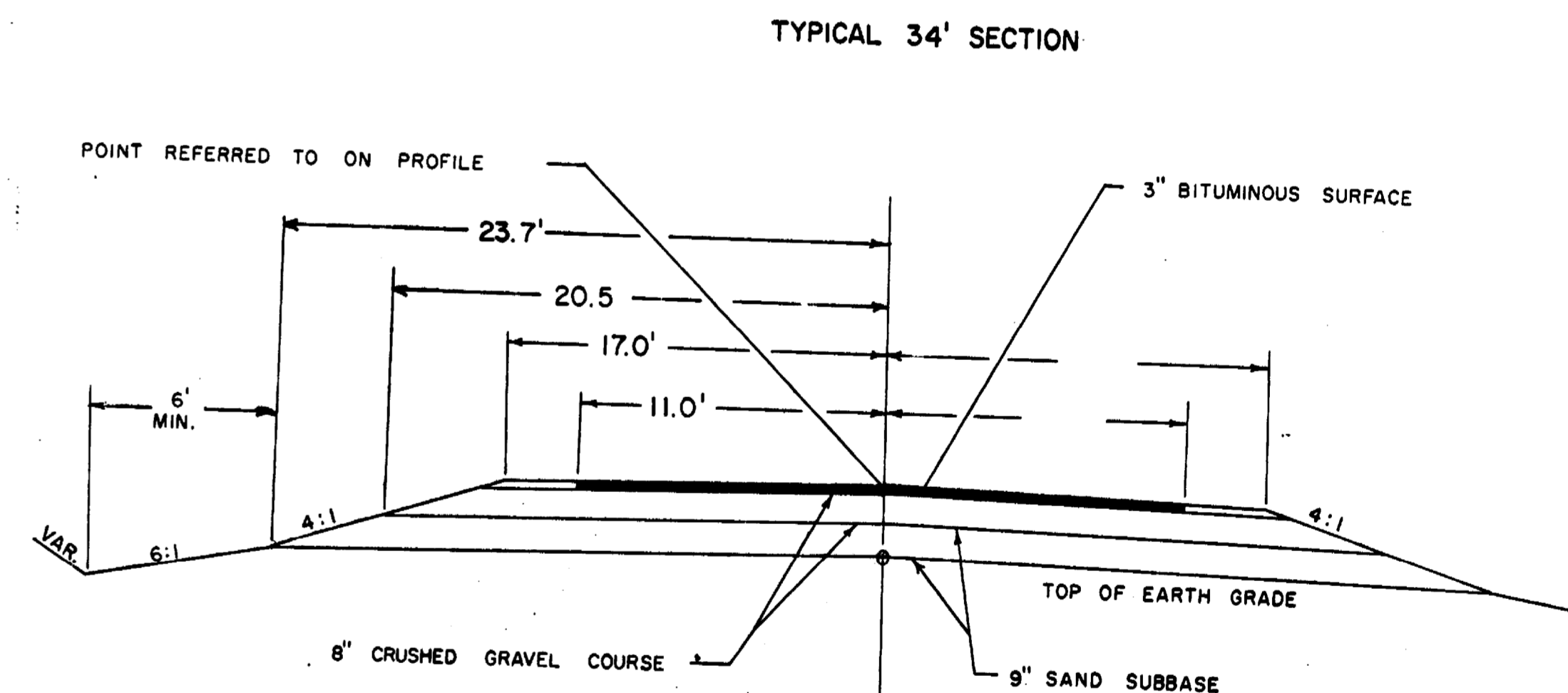
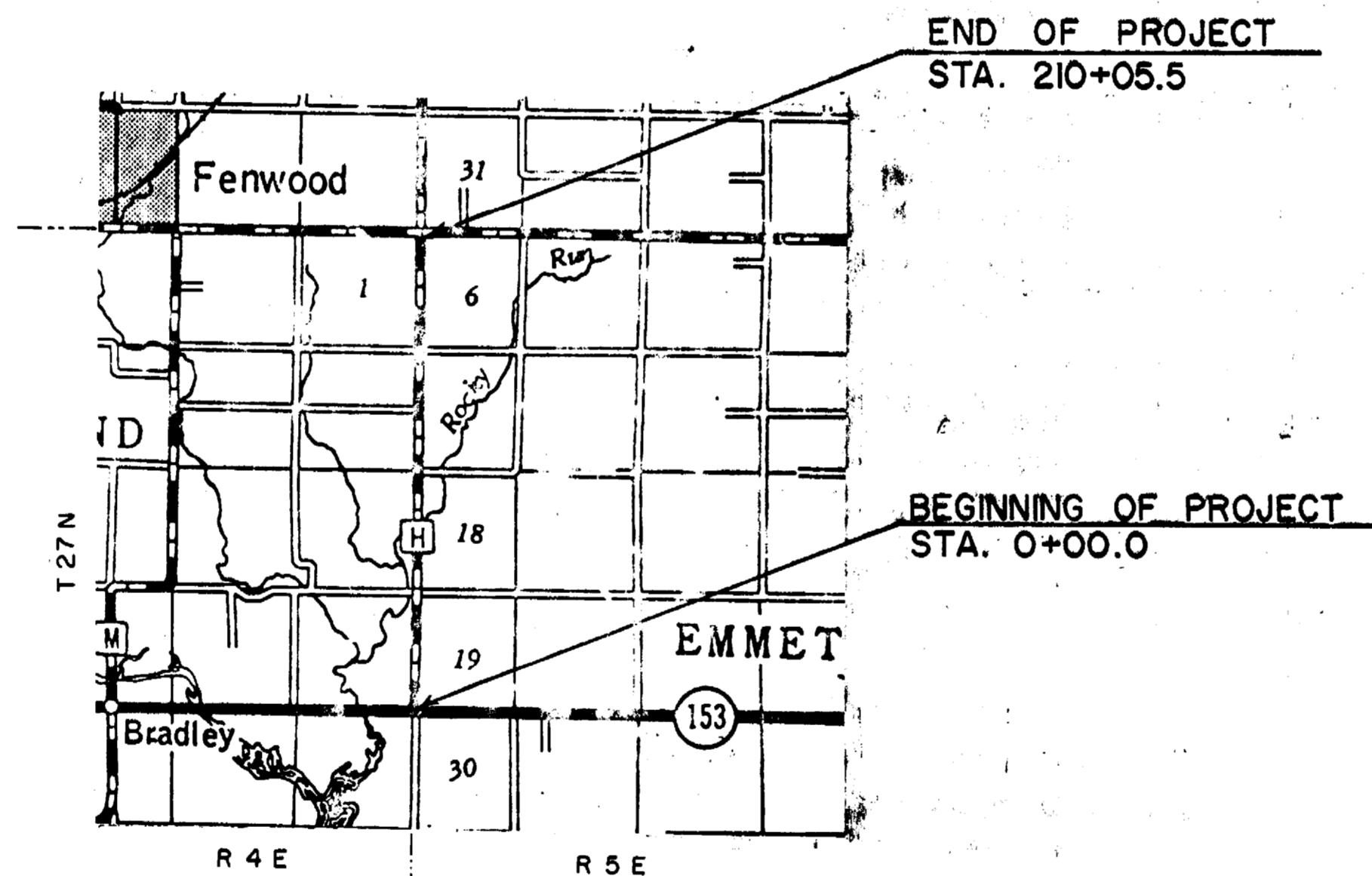
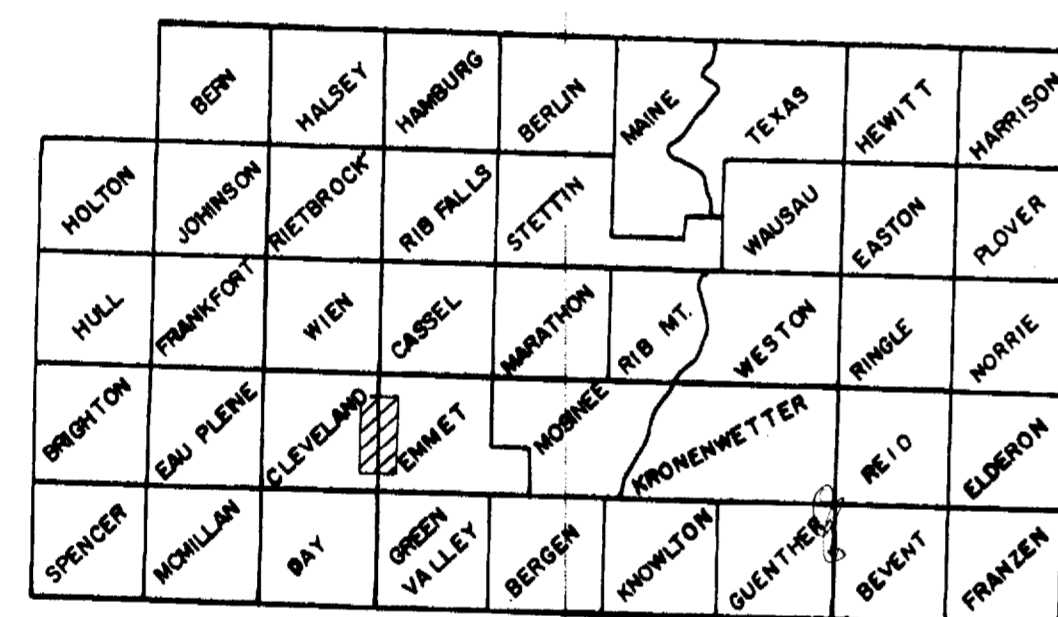
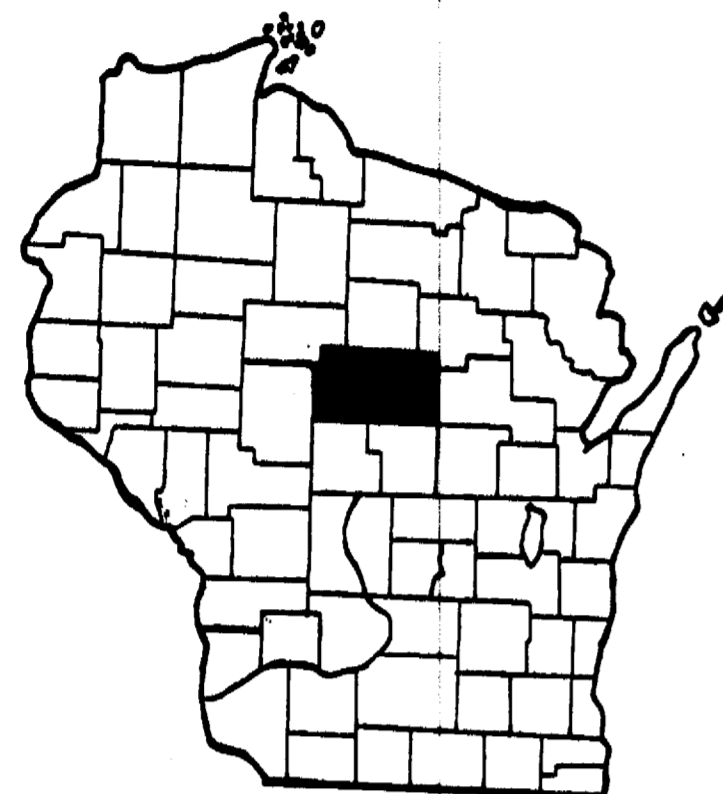


MARATHON COUNTY HIGHWAY DEPARTMENT

PLAN AND PROFILE OF PROPOSED

CTH "H"

STH 153 TO CTH "P"



LEGEND

- NEW RIGHT-OF-WAY
- PRESENT RIGHT-OF-WAY
- PROPERTY LINE
- WELL
- TELEPHONE CABLE
- POWER CABLE
- GAS LINE
- POWER POLE
- TELEPHONE POLE
- TELEPHONE PEDESTAL
- GUY POLE
- TRANSMISSION TOWER & LINE
- FENCE
- TRAVELED WAY

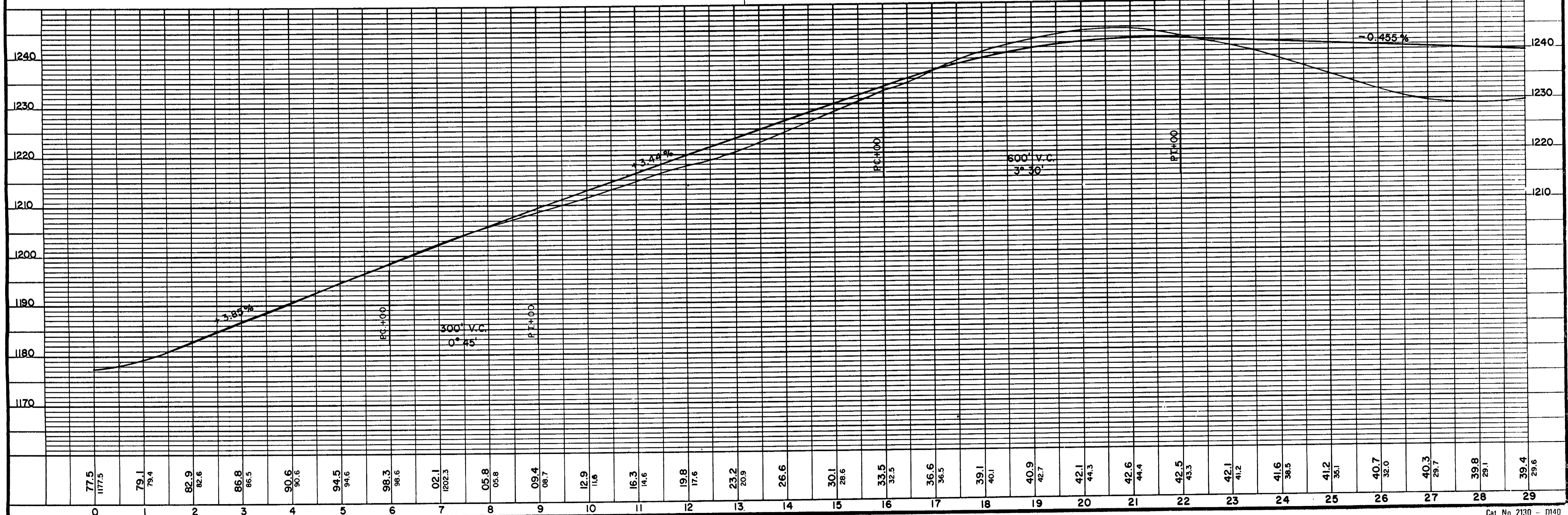
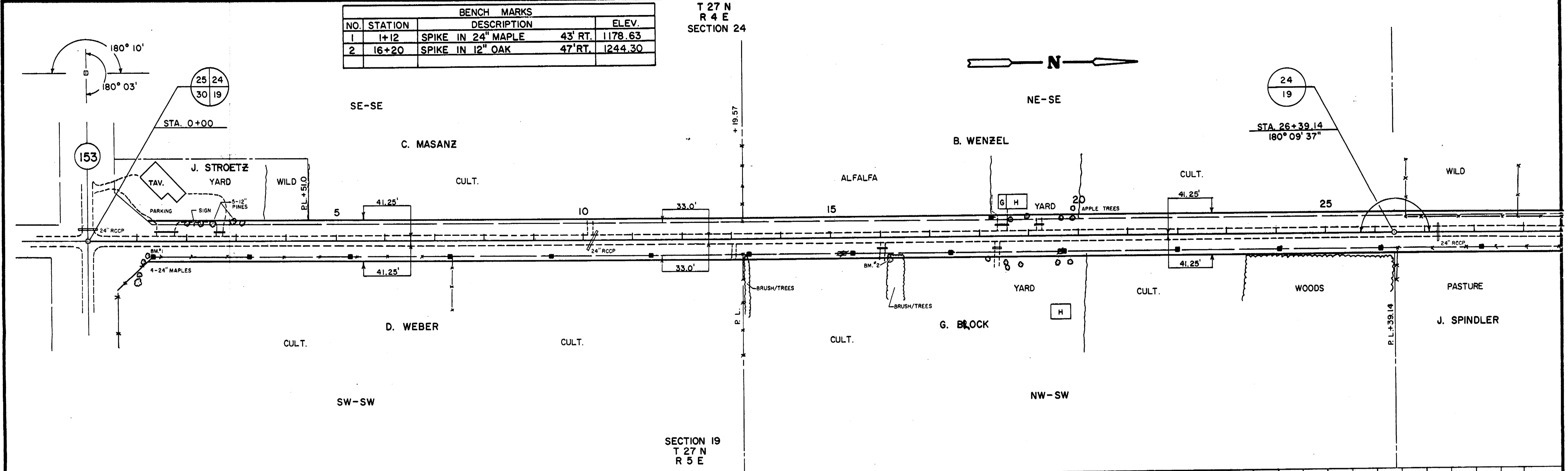
SCALE = 1" = 100'

NET LENGTH OF CENTERLINE = 4.0 MILES RURAL

BENCH MARKS				
NO.	STATION	DESCRIPTION	RT.	ELEV.
1	1+12	SPIKE IN 24" MAPLE	43'	1178.63
2	16+20	SPIKE IN 12" OAK	47'	1244.30

T 27 N
R 4 E
SECTION 24

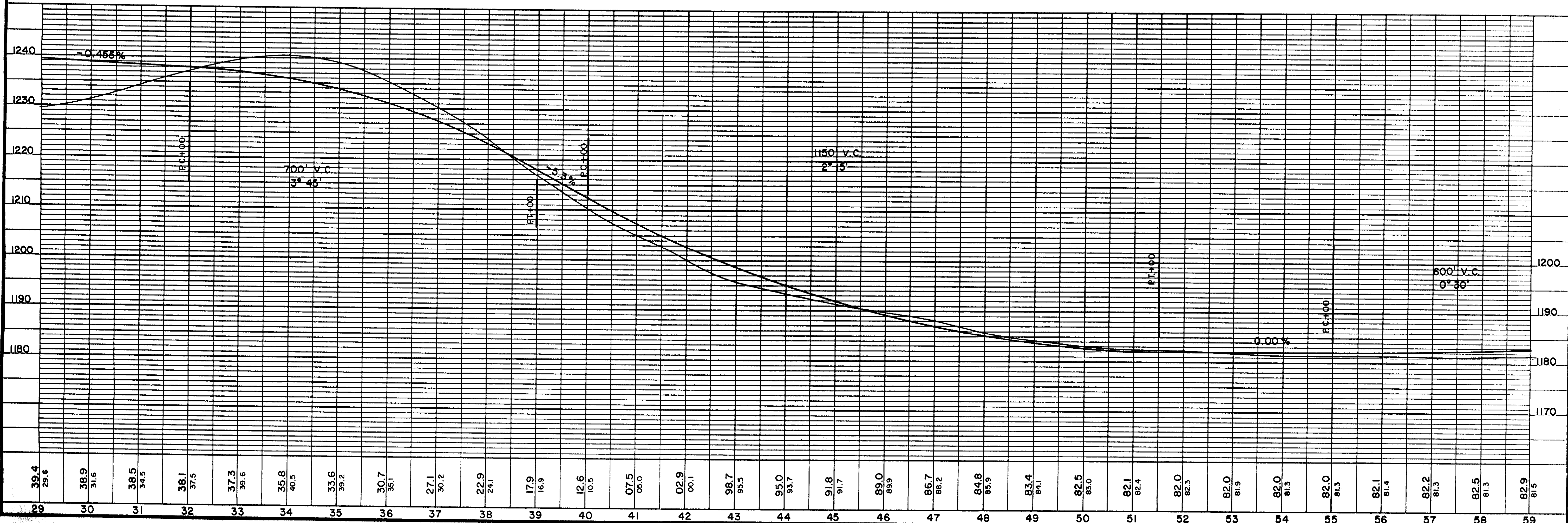
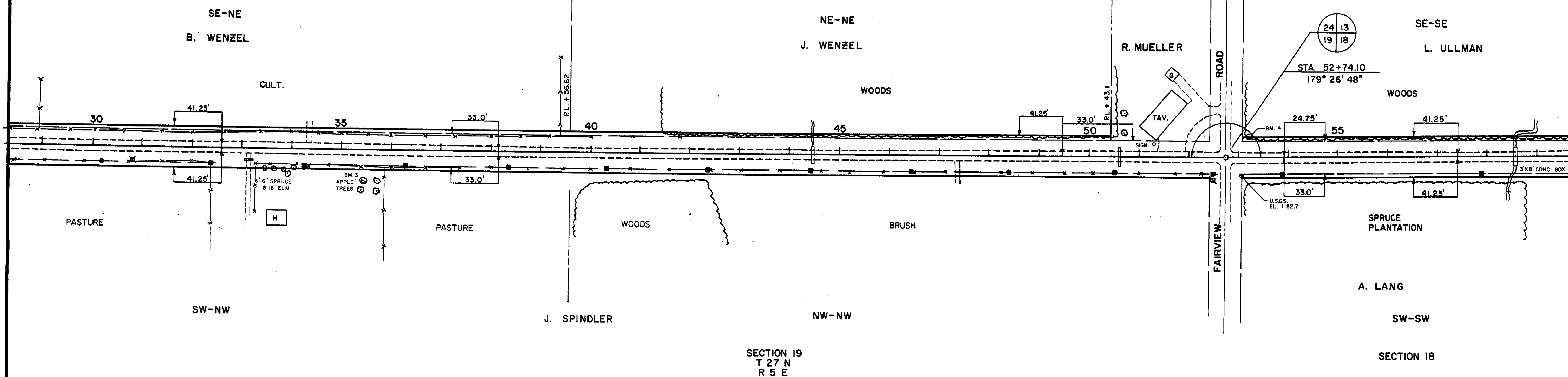
SECTION 19
T 27 N
R 5 E



BENCH MARKS			
NO.	STATION	DESCRIPTION	ELEV.
3	35+40	SPIKE IN TWIN 12" APPLE 60' RT.	1240.19
4	53+30	SPIKE IN 10" PINE 45' LT.	1178.53

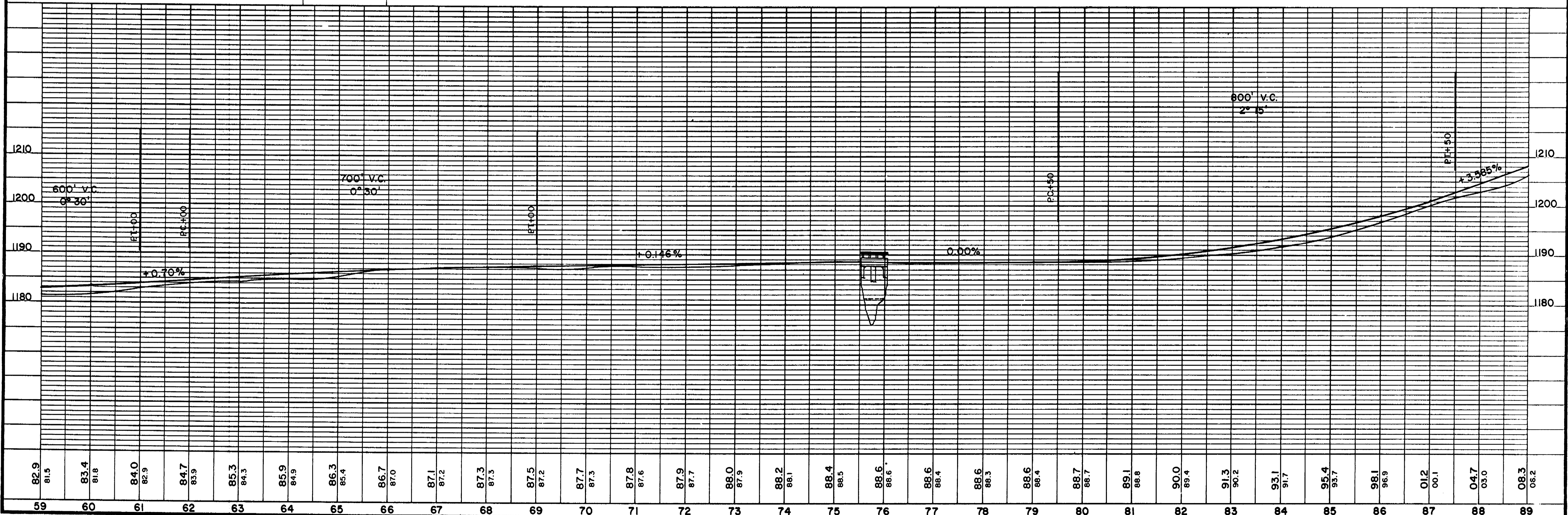
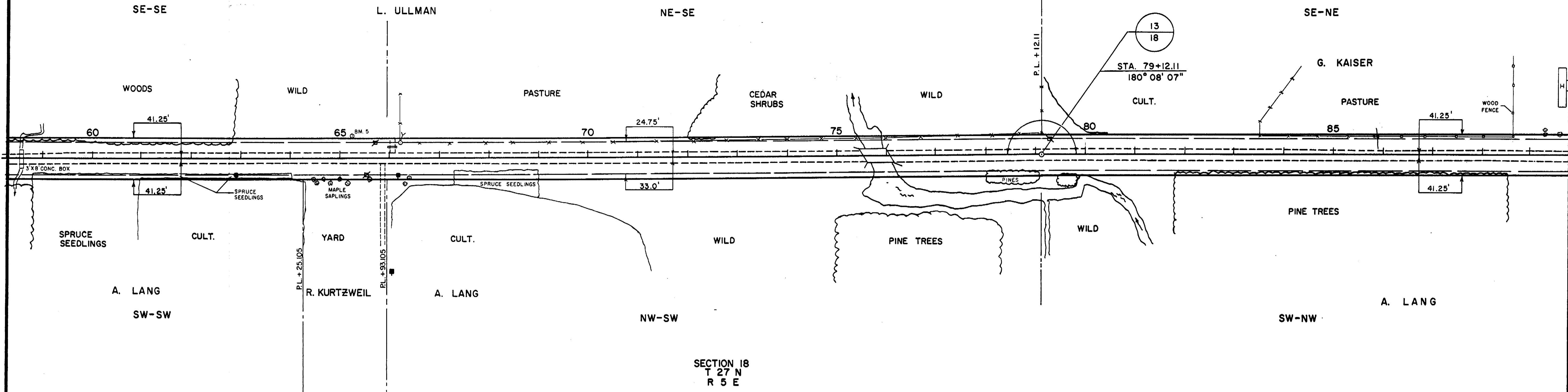
T 27 N
R 4 E
SECTION 24

SECTION 13



BENCH MARKS				
NO.	STATION	DESCRIPTION	ELEV.	
5	65+24	SPIKE IN 4" ASH	45' LT.	1186.85
6	76+13	'X' ON N.E. CORNER OF BRIDGE 15' RT.		1188.45

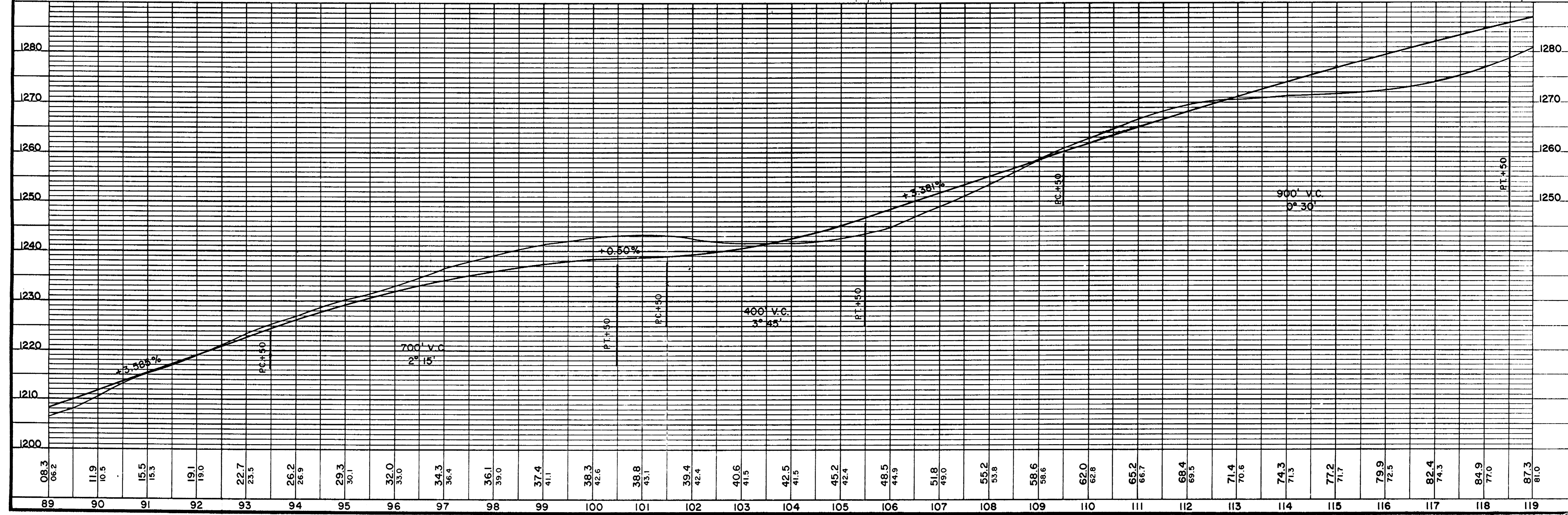
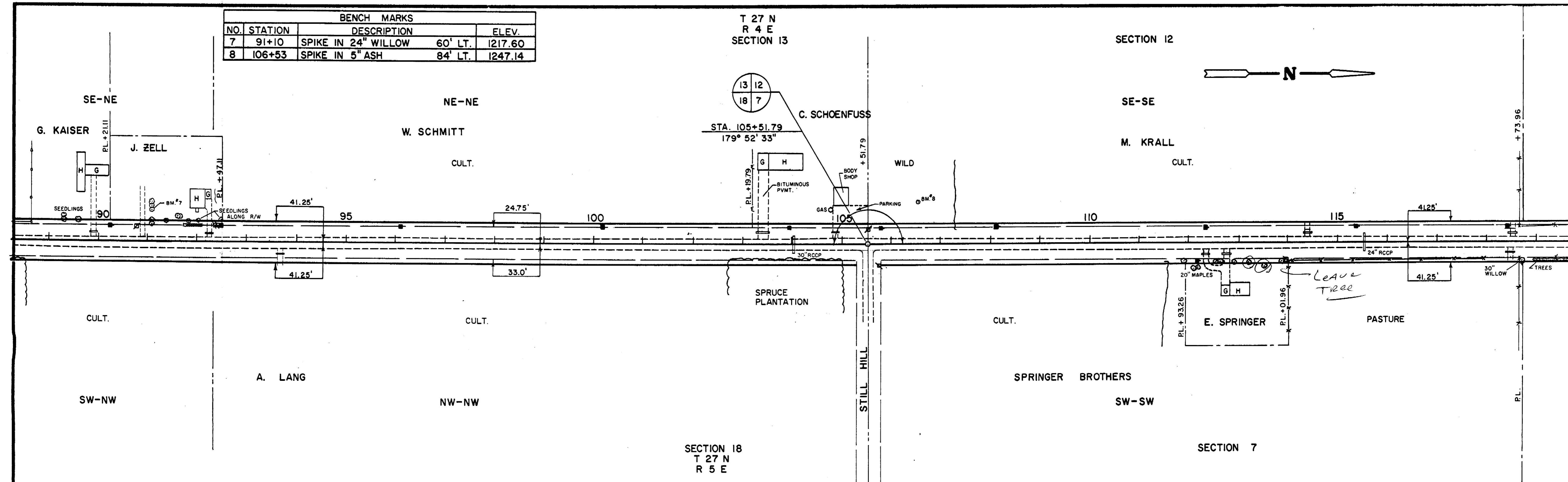
T 27 N
R 4 E
SECTION 13



BENCH MARKS				
NO.	STATION	DESCRIPTION	ELEV.	
7	91+10	SPIKE IN 24" WILLOW	60' LT.	1217.60
8	106+53	SPIKE IN 5" ASH	84' LT.	1247.14

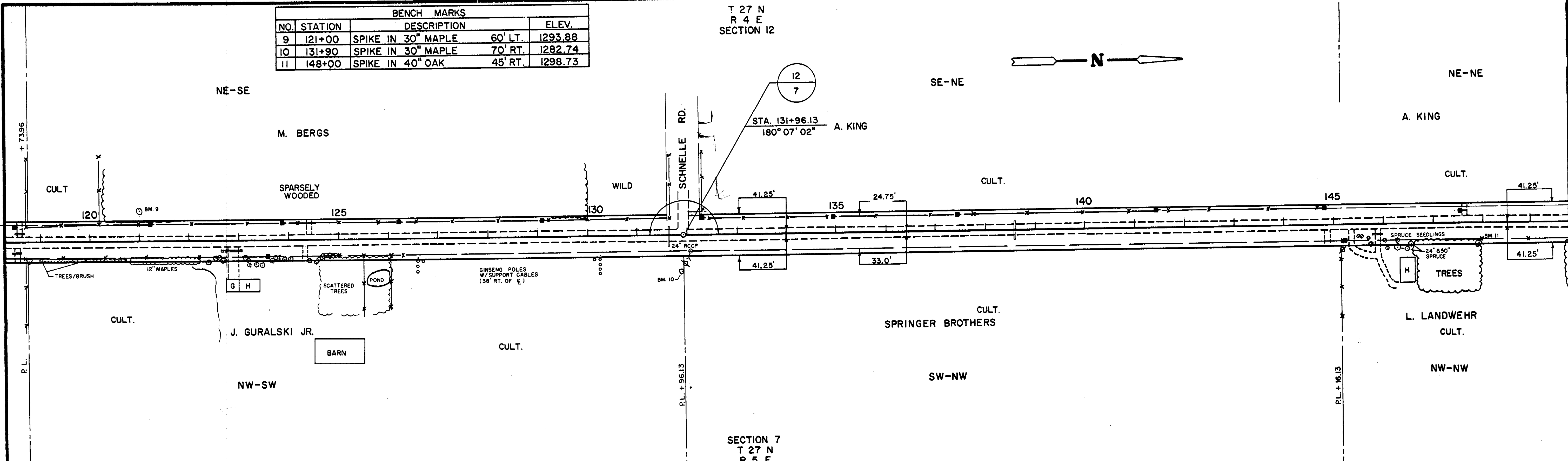
T 27 N
R 4 E
SECTION 13

SECTION 12

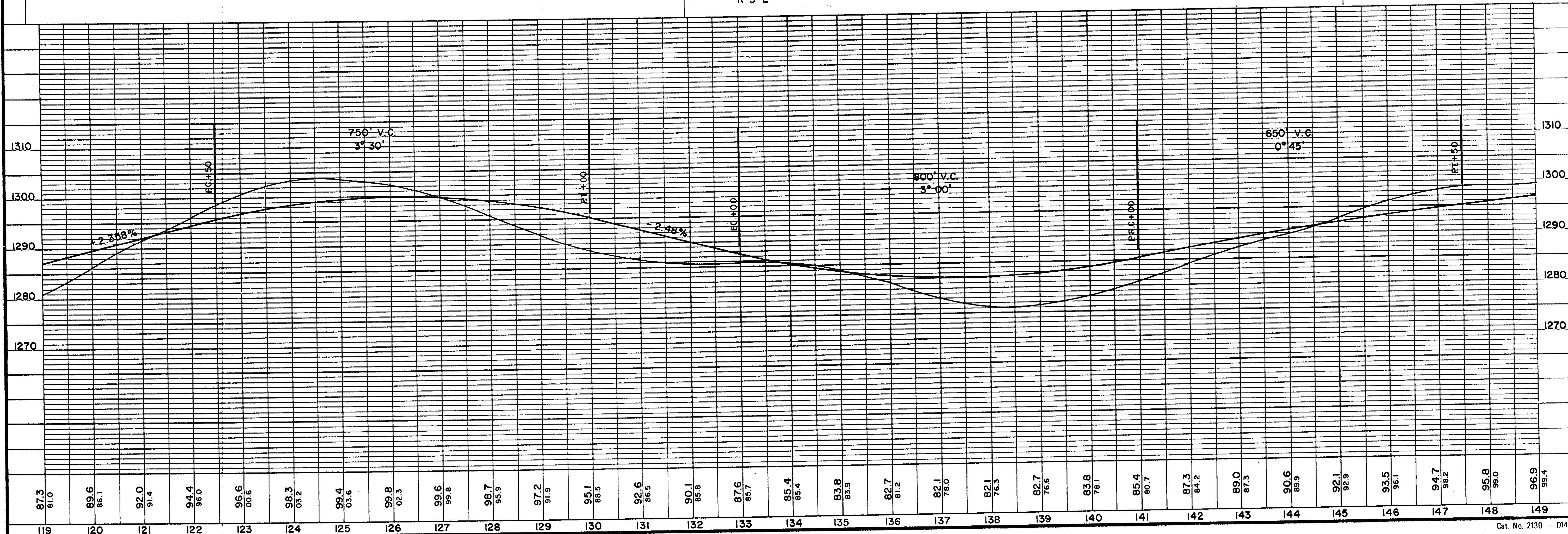


BENCH MARKS				
NO.	STATION	DESCRIPTION		ELEV.
9	121+00	SPIKE IN 30" MAPLE	60' LT.	1293.88
10	131+90	SPIKE IN 30" MAPLE	70' RT.	1282.74
11	148+00	SPIKE IN 40" OAK	45' RT.	1298.73

T 27 N
R 4 E
SECTION 12

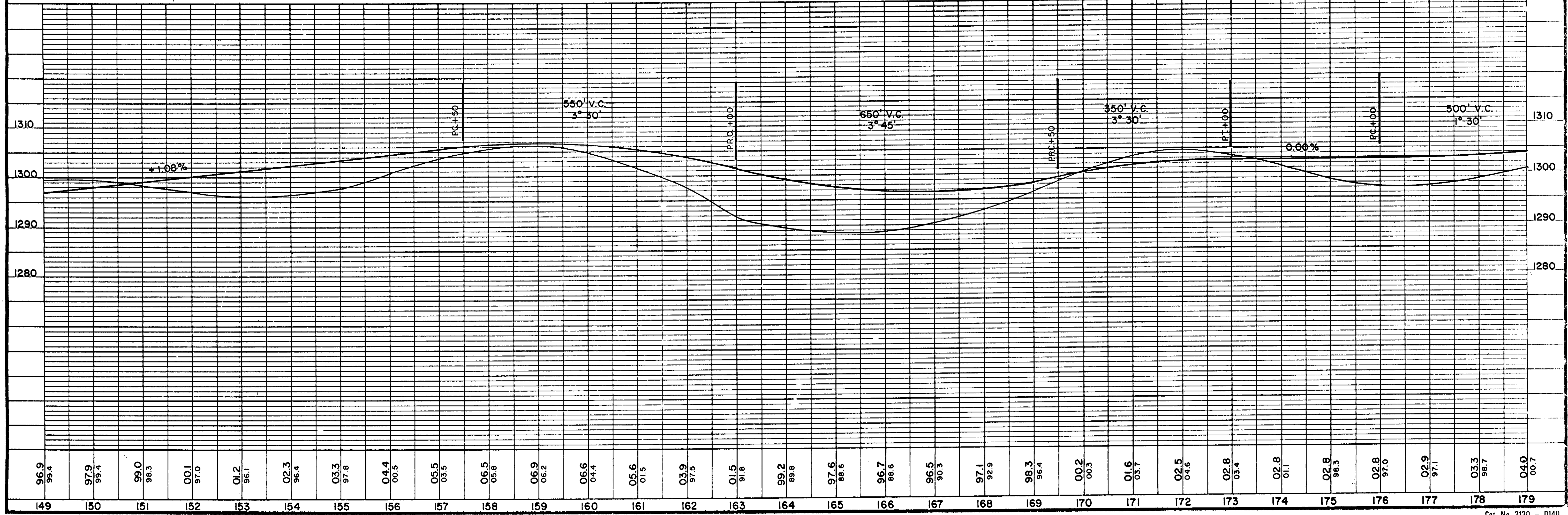
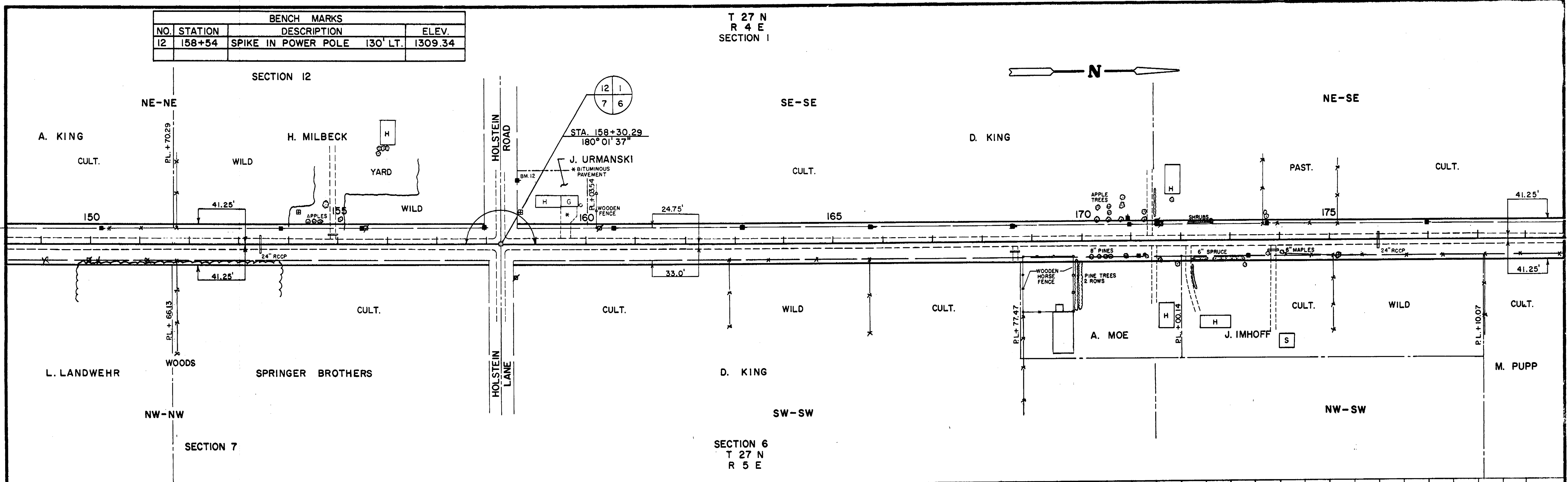


SECTION 7
T 27 N
R 5 E



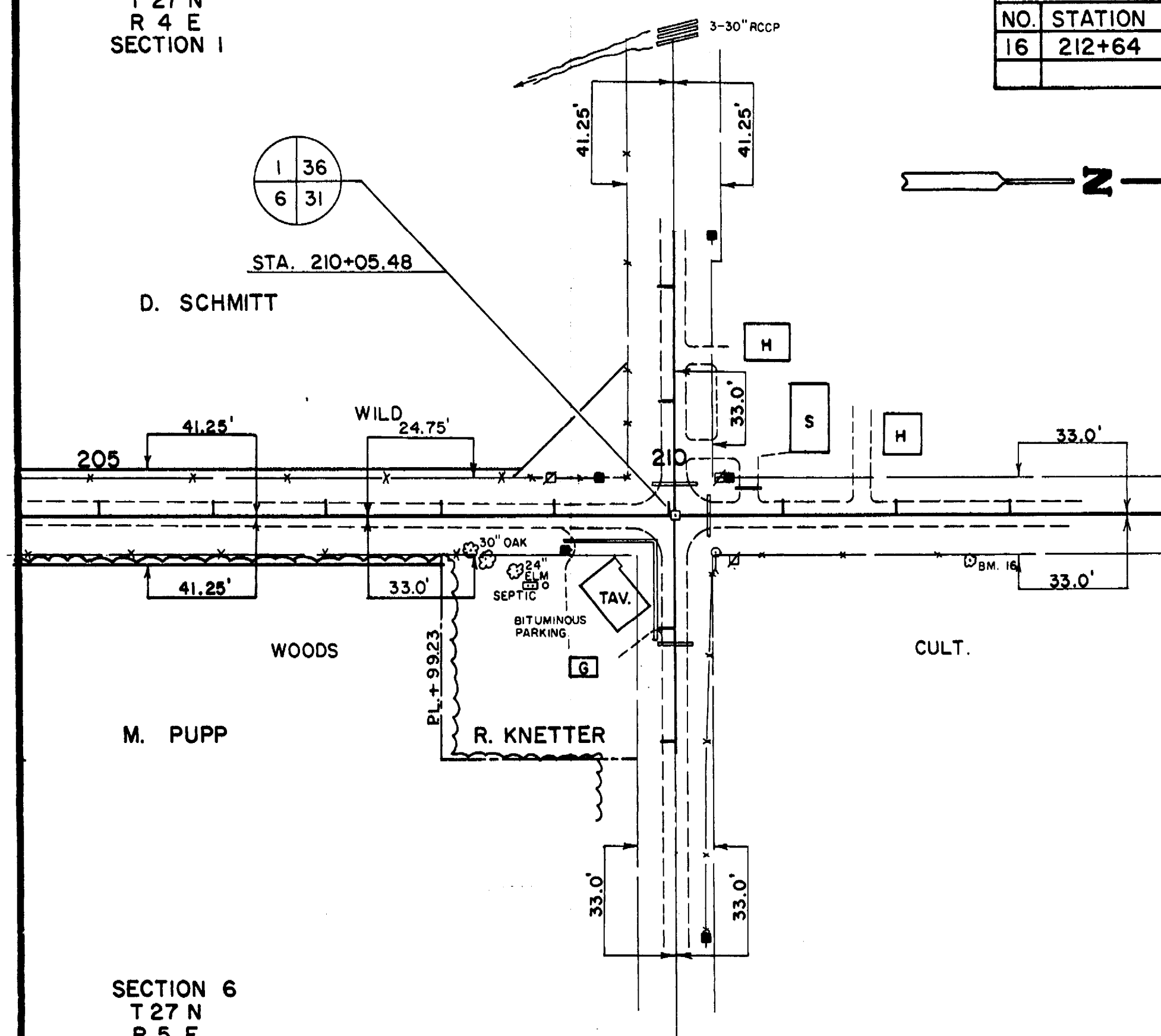
BENCH MARKS			
NO.	STATION	DESCRIPTION	ELEV.
12	158+54	SPIKE IN POWER POLE 130' LT.	1309.34

T 27 N
R 4 E
SECTION 1



T 27 N
R 4 E
SECTION 1

BENCH MARKS			
NO.	STATION	DESCRIPTION	ELEV.
16	212+64	SPIKE IN 20" PINE 40' RT.	1307.97



SECTION 6
T 27 N
R 5 E

