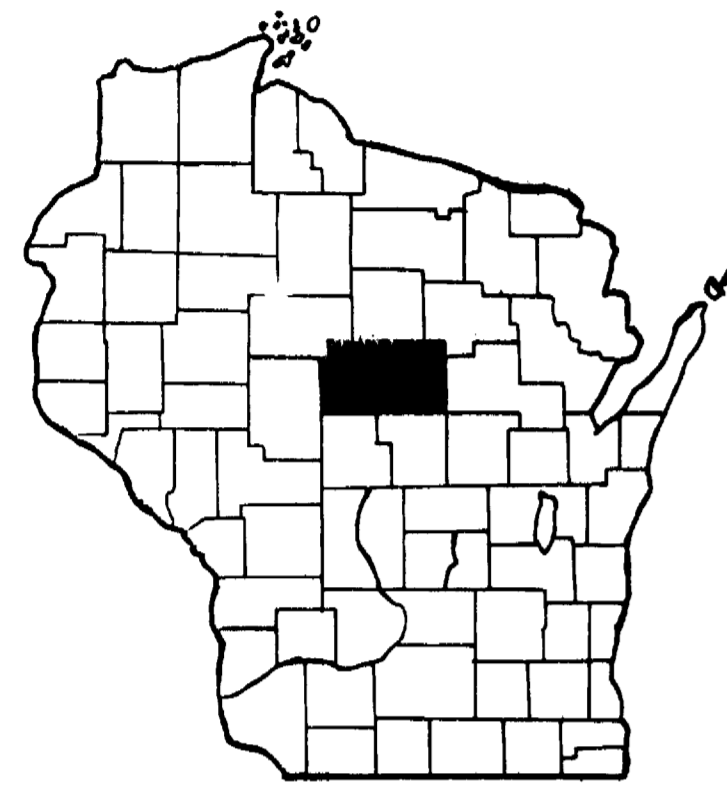


# MARATHON COUNTY HIGHWAY DEPARTMENT

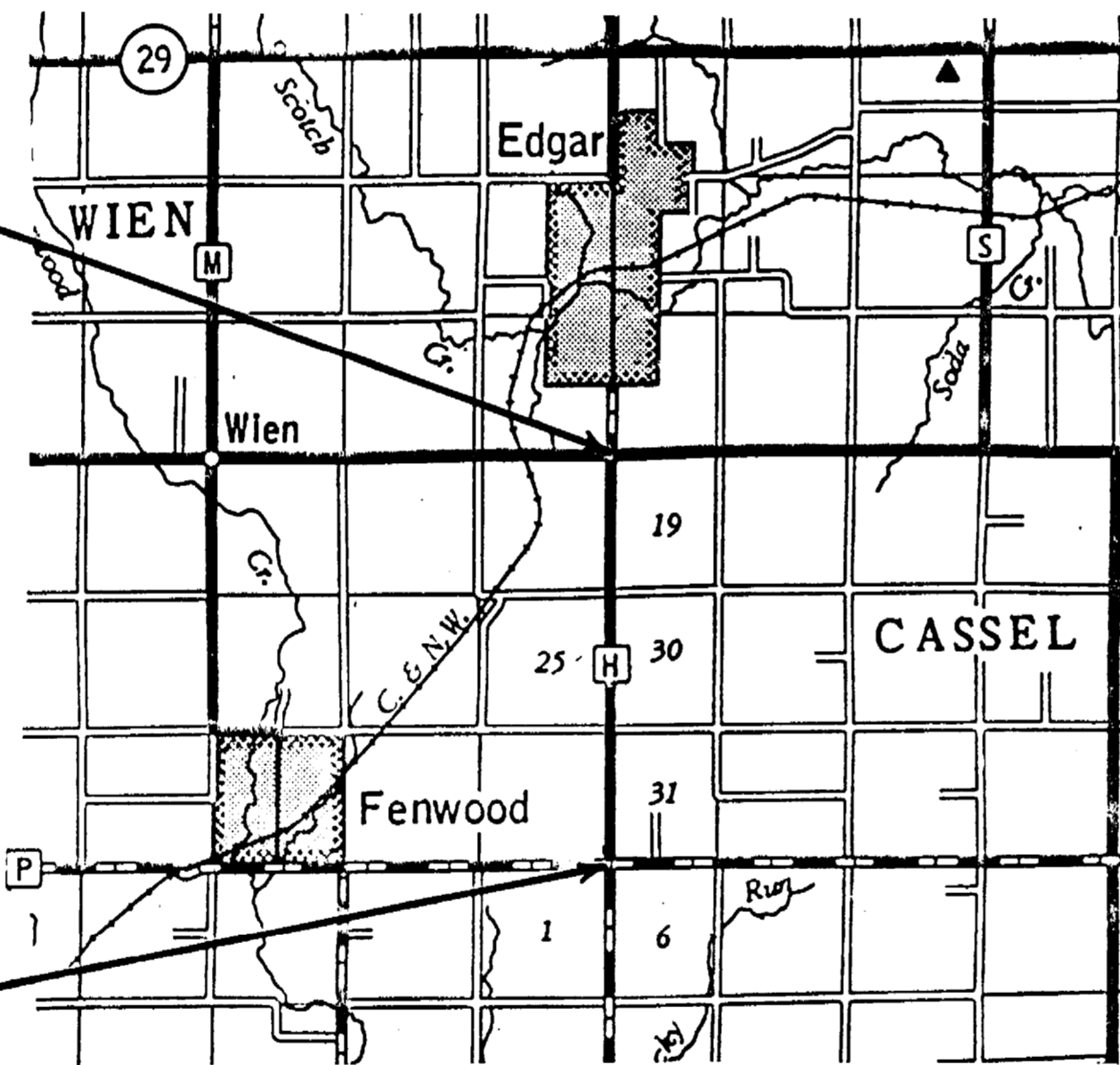
PLAN AND PROFILE OF PROPOSED

## C.T.H. "H" C.T.H. "P" TO C.T.H. "N"



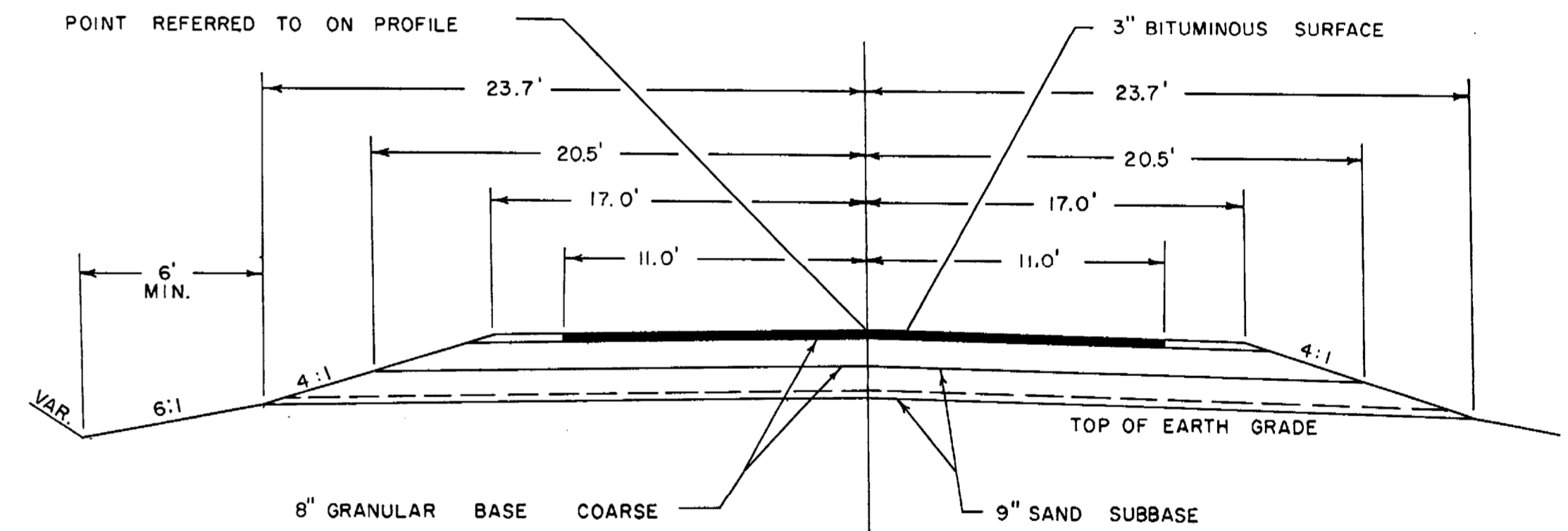
	BOON	HALSEY	HAMBURG	BERLIN	MANNE	TEXAS	HEWITT	HARRISON
HOLTON	JOHNSON	RIEBROCK	RIB FALLS	STETTIN	WAUSAU	EASTON	FLOWER	
HULL	FRANKFORT	WIEN	CASSEL	MARATHON	RIB MT.	WESTON	RINGLE	NORRIE
BRIGHTON	EAU CLAIRE	CLEVELAND	EMMET	MOSHEE	KRONENWETTER	REID	ELDERON	
SPENCER	WICKLIFF	DAY	GREEN VALLEY	BERGEN	HOWLTON	QUENTON	BEAUMONT	FRANZEN

END OF PROJECT  
STA. 368+20.0



BEGINNING OF PROJECT  
STA. 210+05.9

TYPICAL 34' SECTION



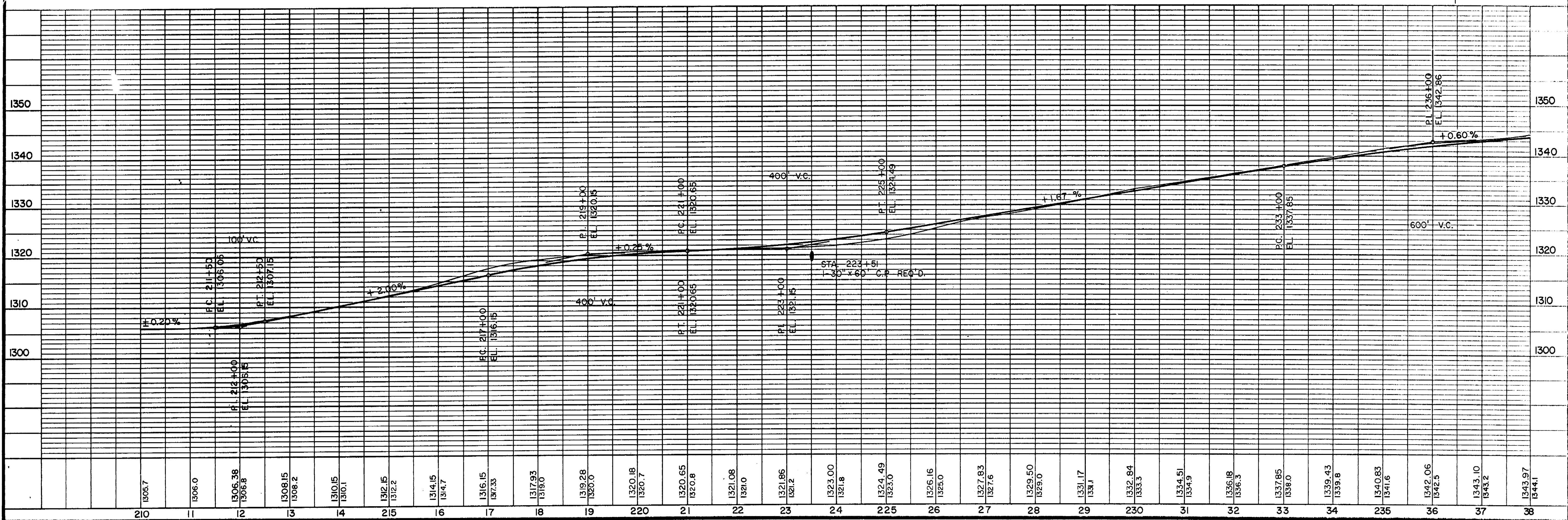
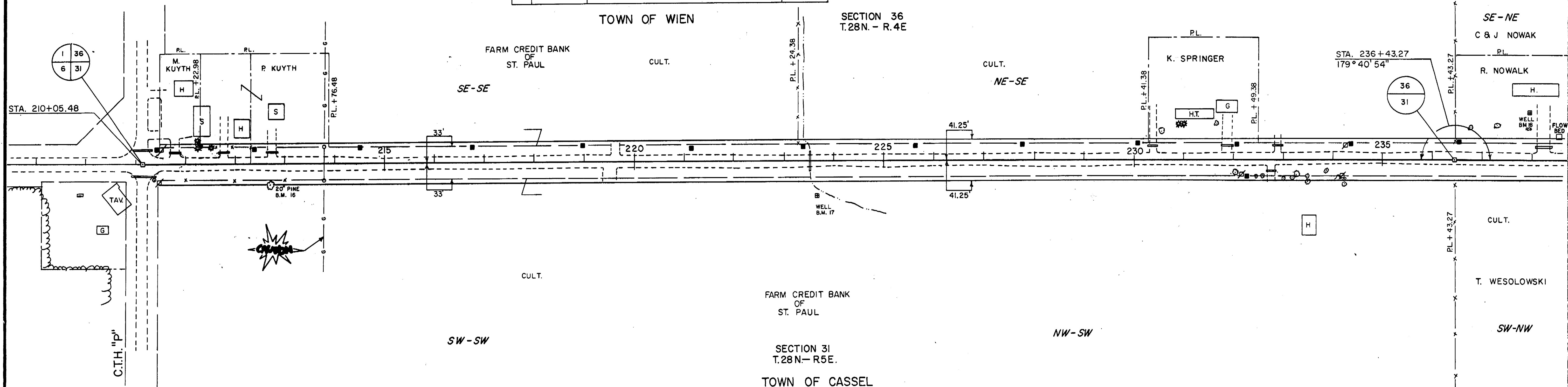
### LEGEND

- NEW RIGHT-OF-WAY
- PRESENT RIGHT-OF-WAY
- PROPERTY LINE
- WELL
- TELEPHONE CABLE
- POWER CABLE
- GAS LINE
- POWER POLE
- TELEPHONE POLE
- TELEPHONE PEDESTAL
- GUY POLE
- TRANSMISSION TOWER & LINE
- FENCE
- TRAVELED WAY

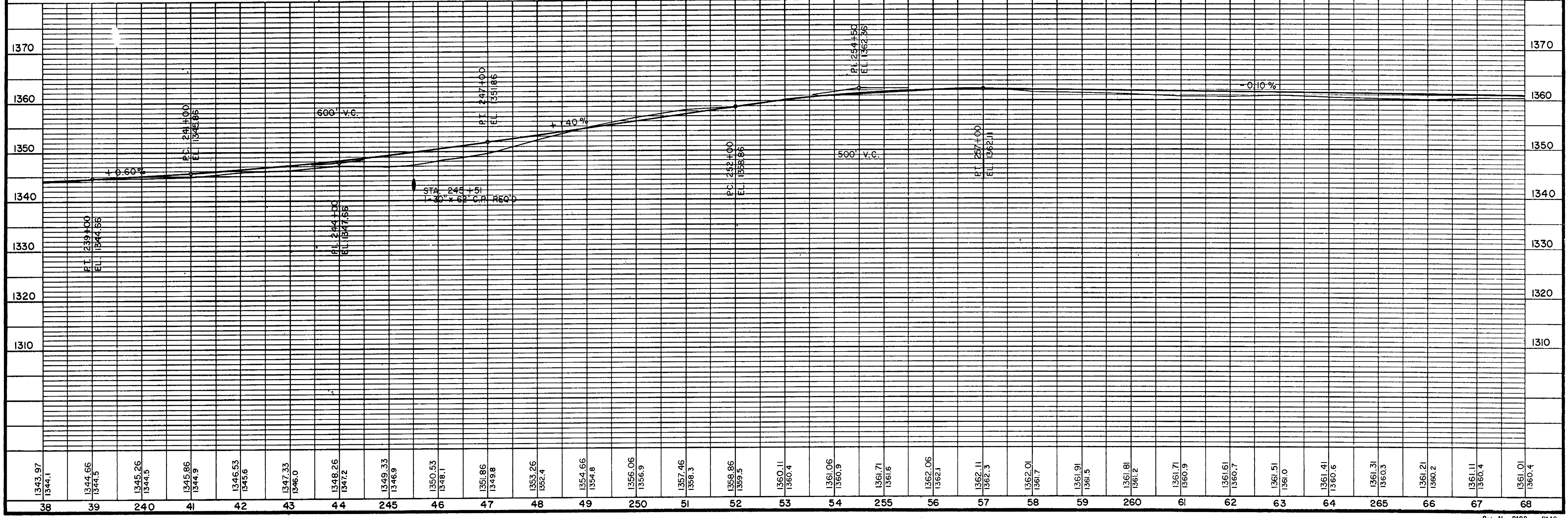
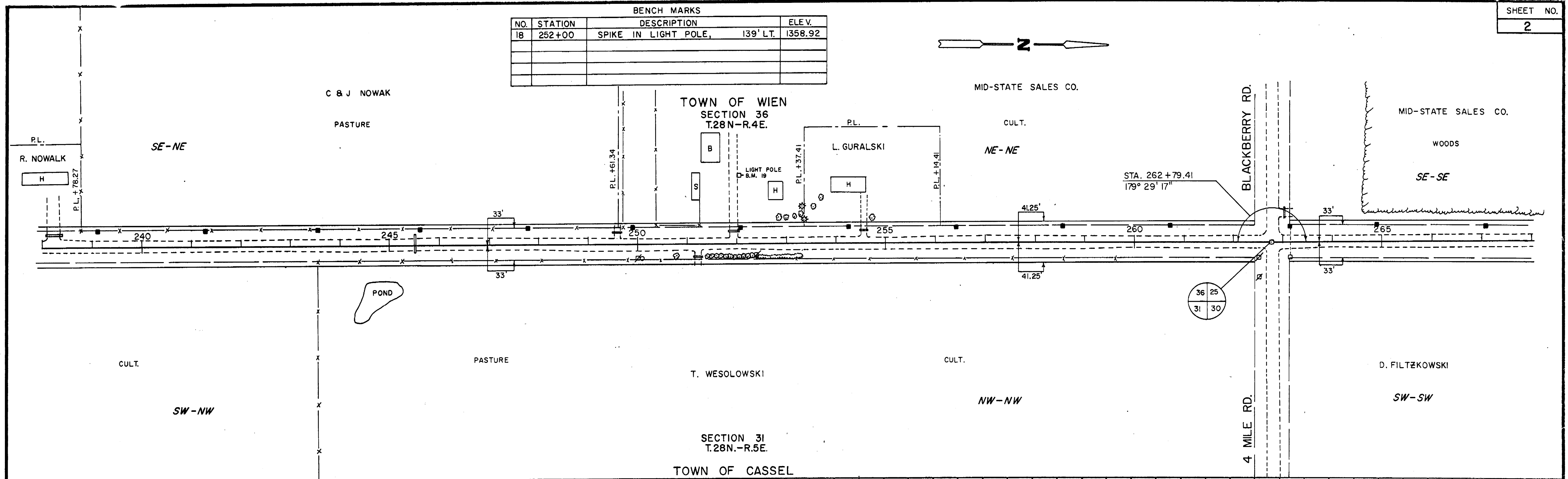
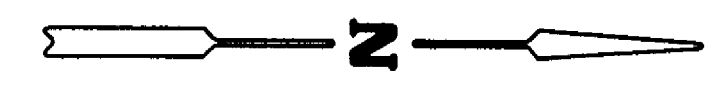
SCALE = 1" = 100'

NET LENGTH OF CENTERLINE = 2.995 MILES RURAL

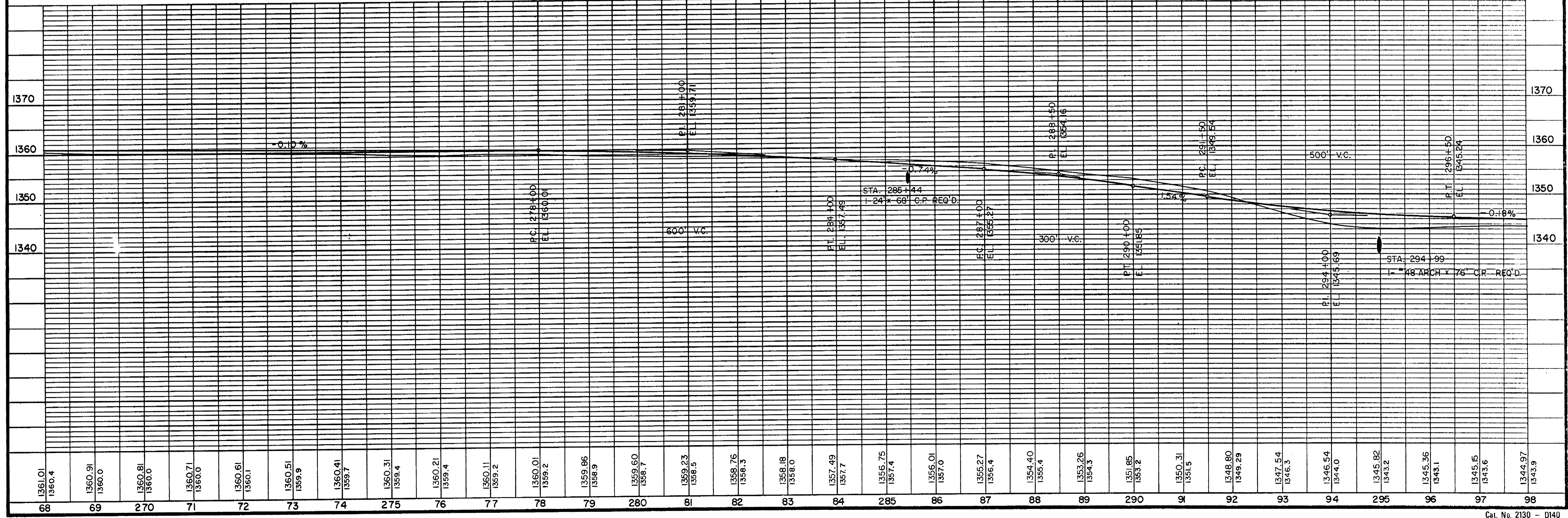
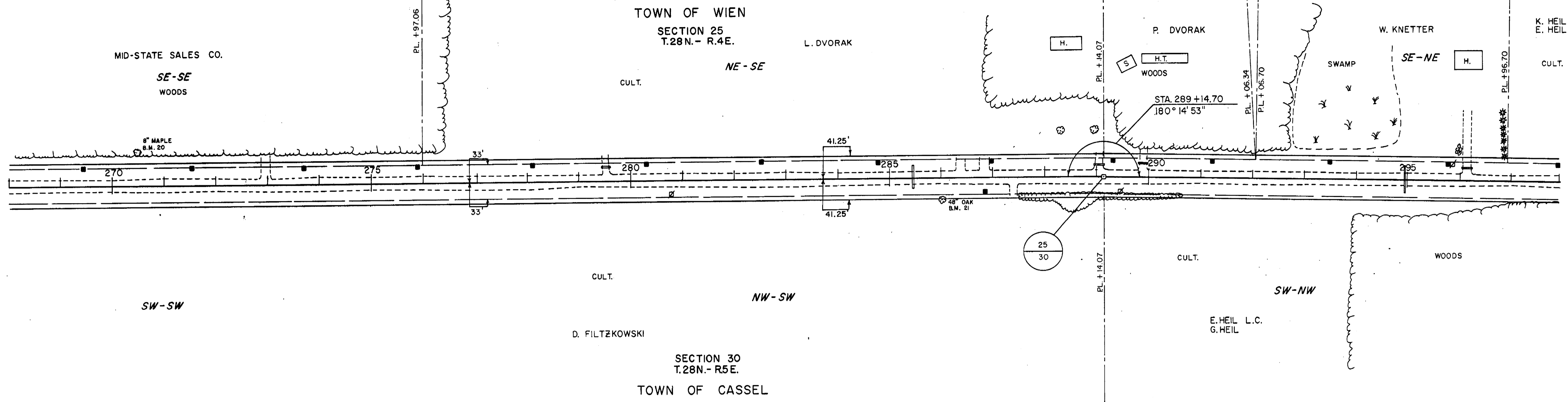
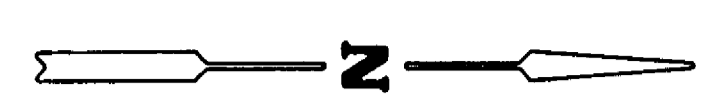
BENCH MARKS			
NO.	STATION	DESCRIPTION	ELEV.
16	212+64	SPIKE IN 20" PINE, 40' RT.	1307.97
17	223+59	BLUE "X" TOP OF WELL, 75' RT.	1320.76
18	237+95	BLUE "X" TOP OF WELL, 95' LT.	1341.75



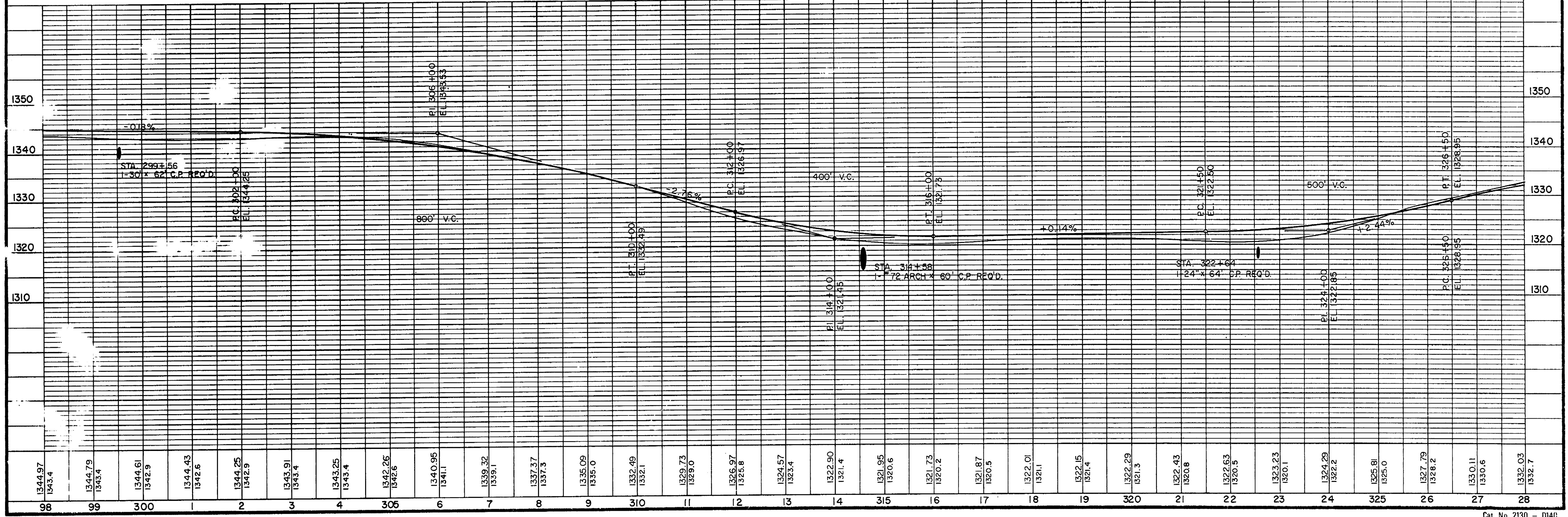
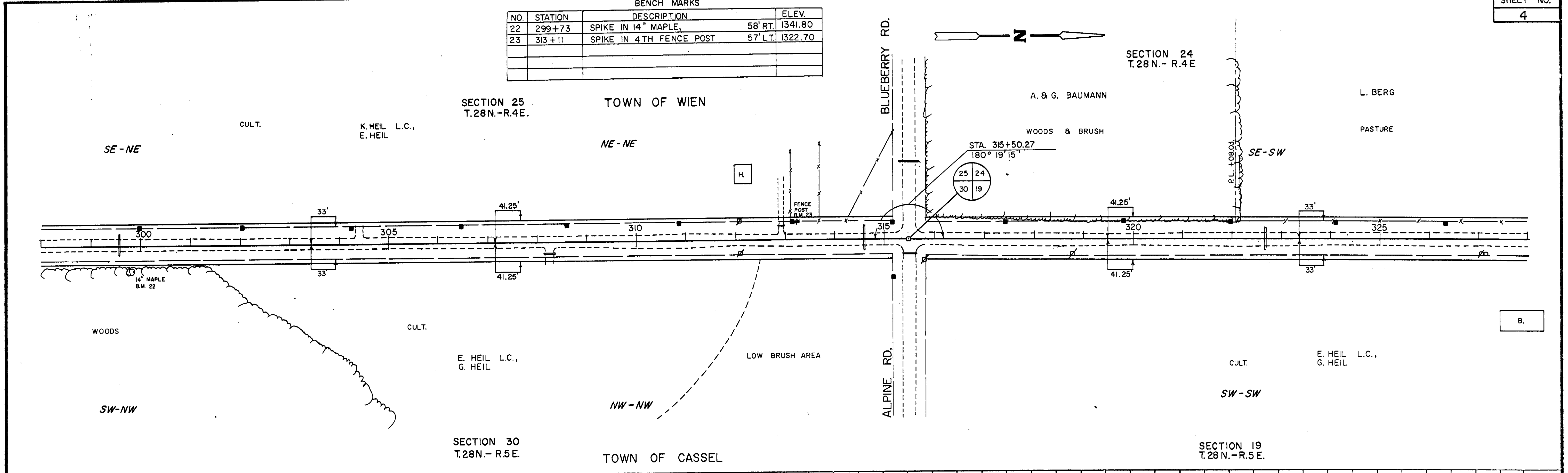
BENCH MARKS			
NO.	STATION	DESCRIPTION	ELEV.
18	252+00	SPIKE IN LIGHT POLE, 139' LT.	1358.92



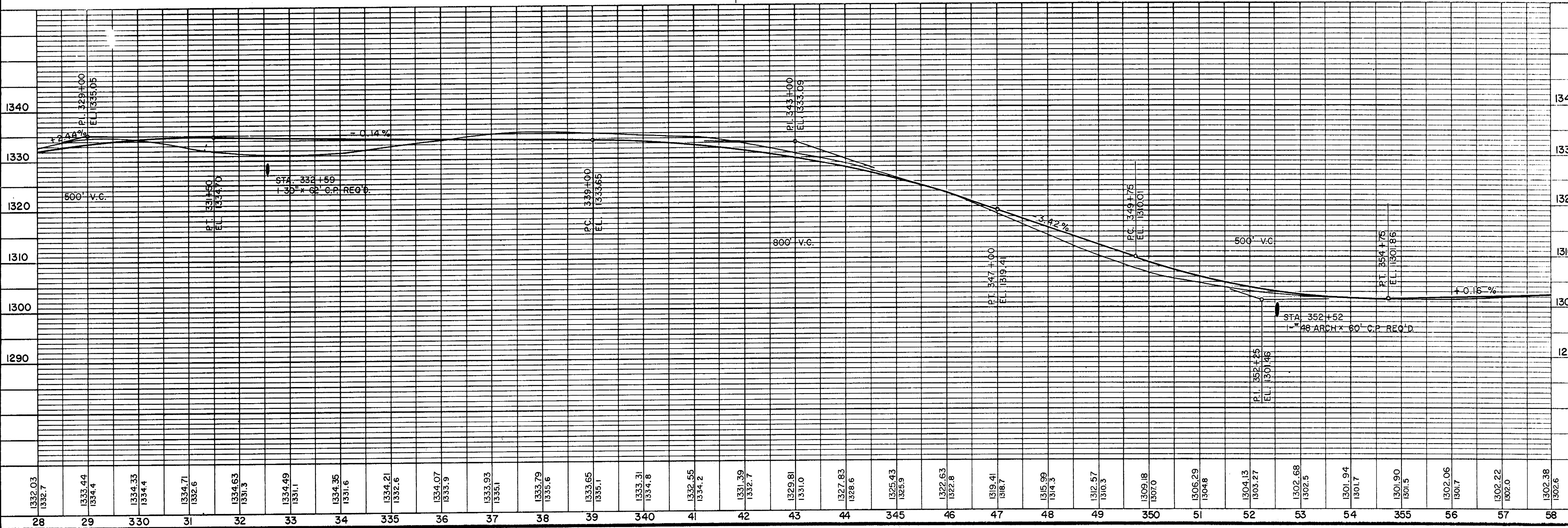
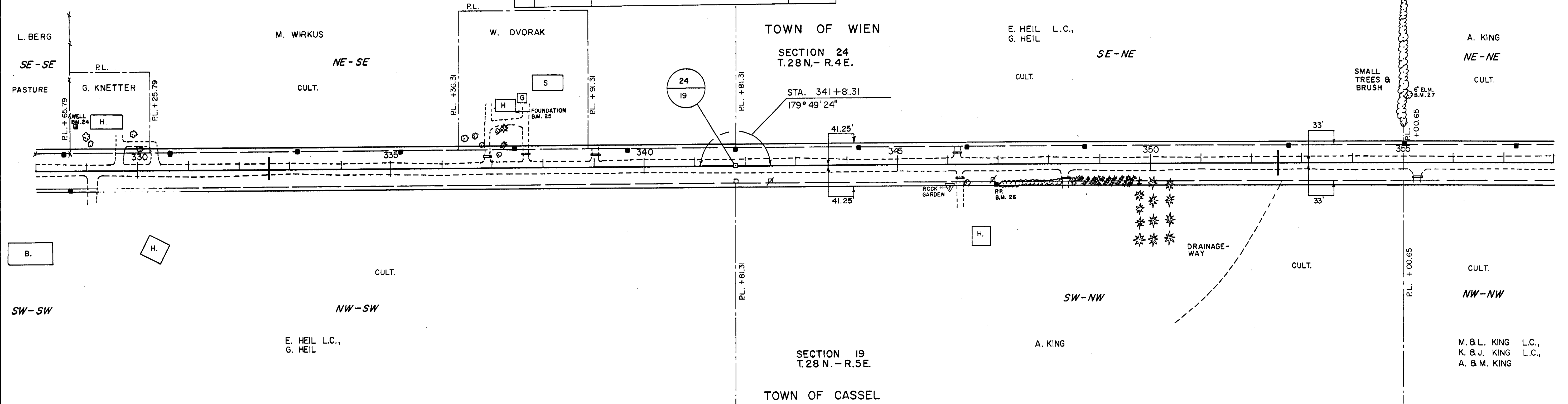
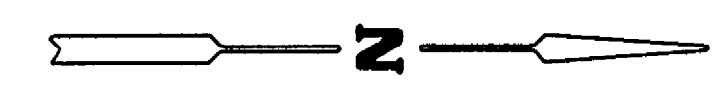
BENCH MARKS				
NO.	STATION	DESCRIPTION		ELEV.
20	270+45	SPIKE IN 8" MAPLE,	64' LT.	1360.75
21	285+99	SPIKE IN 48" OAK,	42' RT.	1358.85



BENCH MARKS			
NO.	STATION	DESCRIPTION	ELEV.
22	299+73	SPIKE IN 14" MAPLE,	58' RT. 1341.80
23	313+11	SPIKE IN 4TH FENCE POST	57' LT. 1322.70

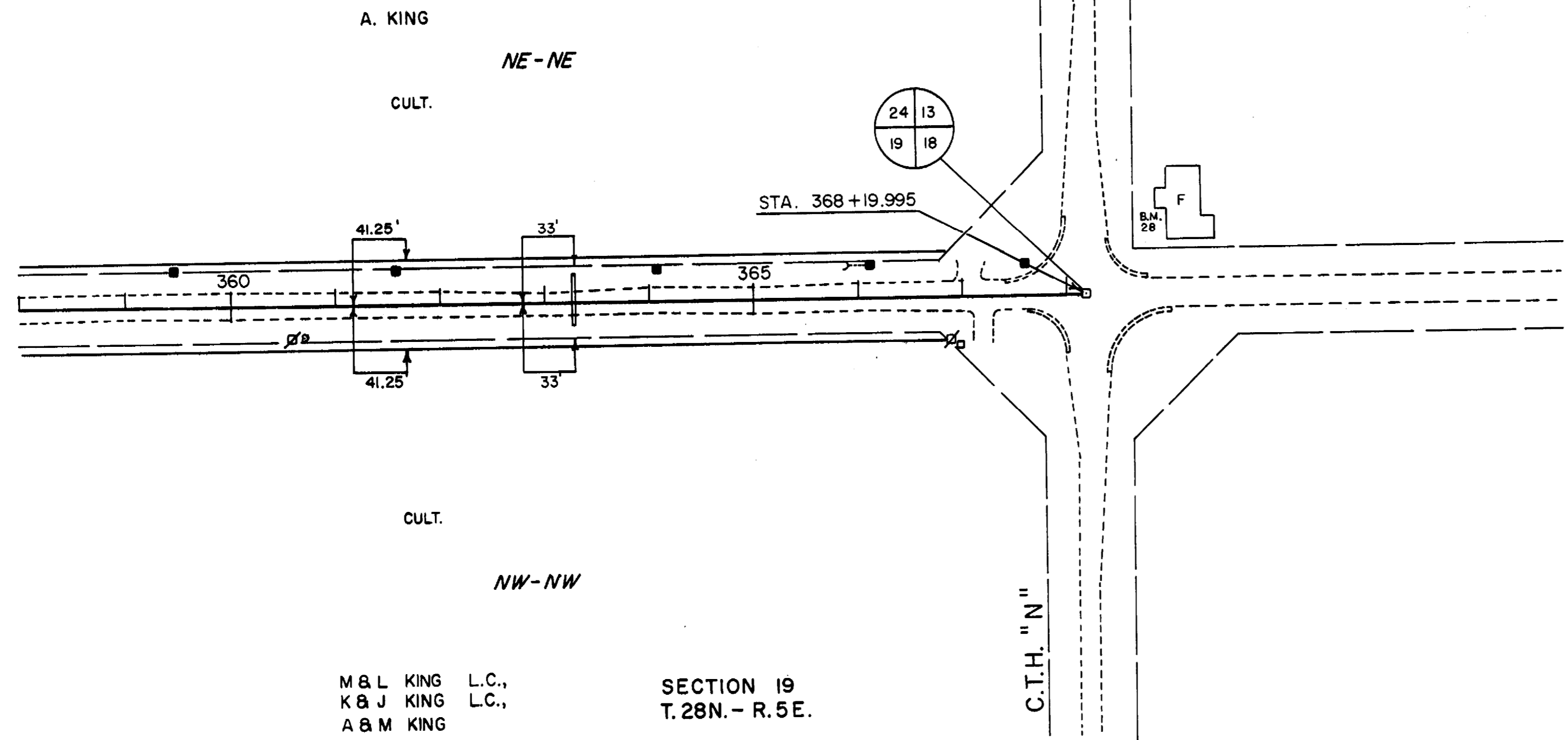
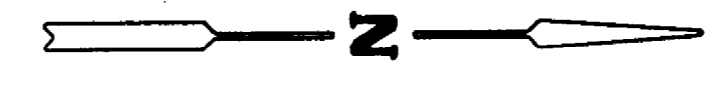


BENCH MARKS			
NO	STATION	DESCRIPTION	ELEV.
24	328+78	BLUE "X" ON TOP OF WELL, 86' LT.	1331.91
25	337+46	BLUE "X" TOP OF NE. HSE FOUND., 109' LT.	1333.94
26	346+98	SPIKE IN POWER POLE, 43' RT.	1319.67
27	355+03	SPIKE IN 6" ELM., 132' LT.	1297.53



TOWN OF WIEN  
SECTION 24  
T.28N.-R.5 E.

BENCH MARKS			
NO.	STATION	DESCRIPTION	ELEV.
28	368+85	BLUE "X" SE CORNER OF CONC. PLATFORM 69' LT.	1305.85



TOWN OF CASSEL  
SECTION 19  
T.28N.-R.5 E.

