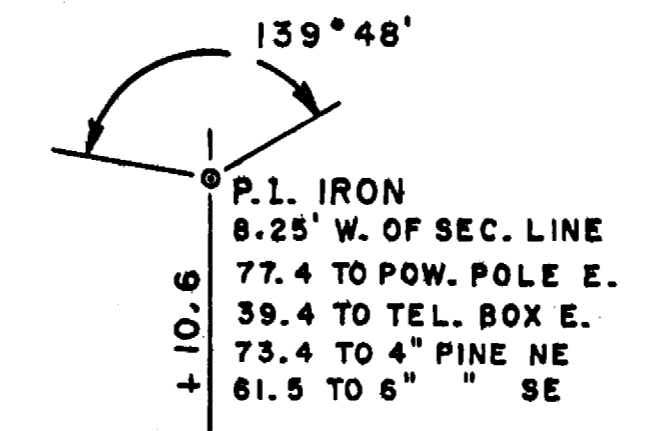


BENCH MARKS				
6	101+87	SPIKE IN 15" PINE - "B"	55'L	154.75
9	26+48	" 12" " - "KK"	45'L	158.34

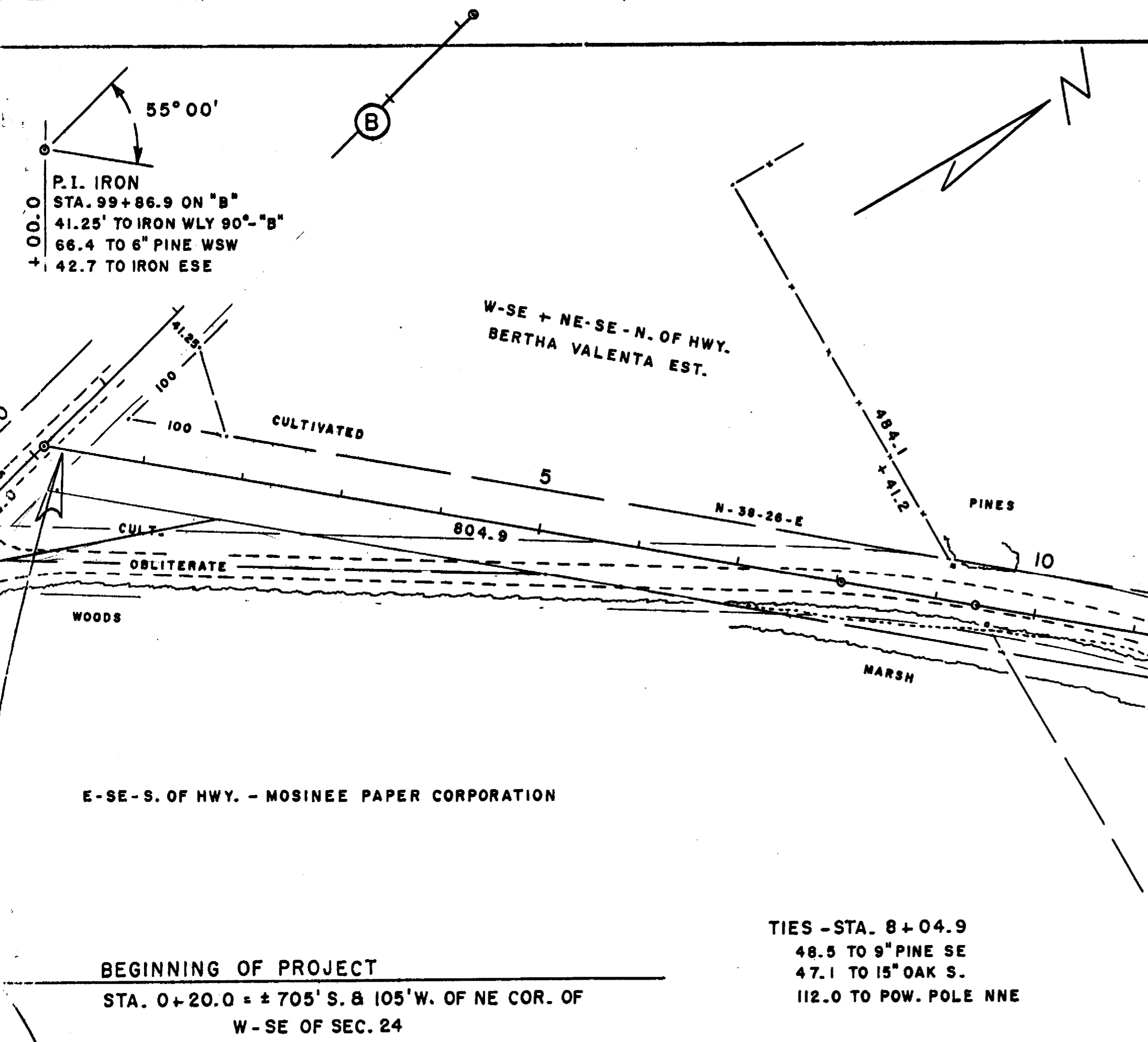


SEC. 24
T 27 N
R 6 E

D = 8°00'
Δ = 40°12'
T = 262.1'
L = 502.5'
E = 46.5'
PC = 19+48.5
PT = 24+51.0

SEC. 19
T 27 N
R 7 E

SEC. 24
T 27 N
R 6 E

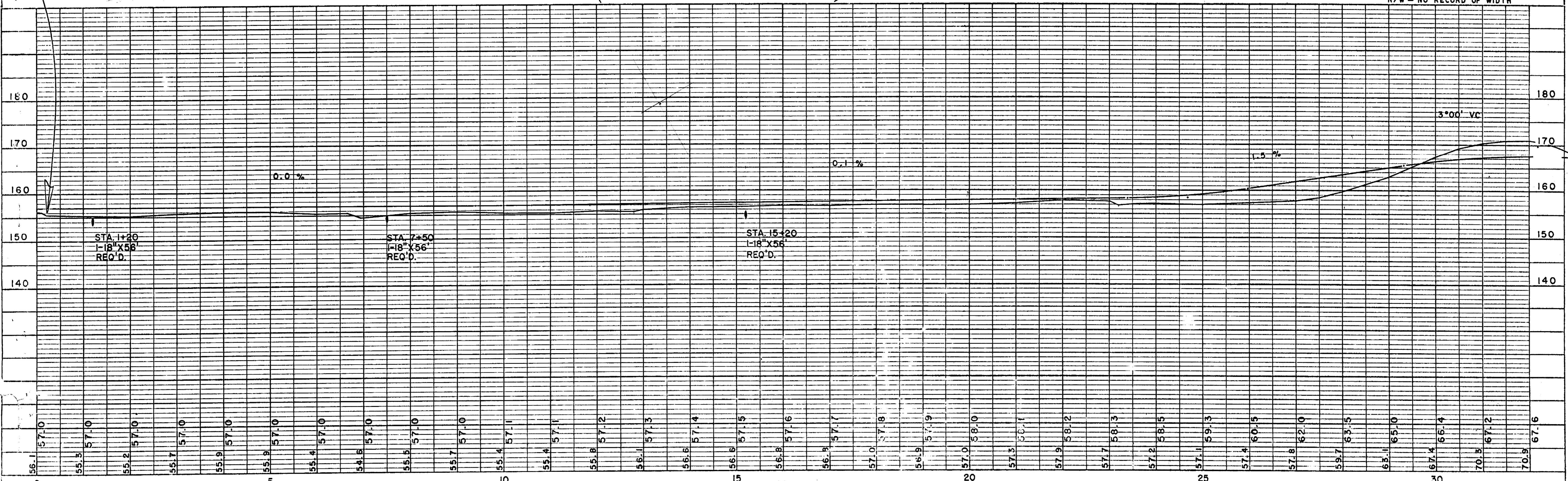


TIES - STA. 8+04.9
48.5 TO 9" PINE SE
47.1 TO 15" OAK S.
112.0 TO POW. POLE NNE

BEGINNING OF PROJECT
STA. 0+20.0 = ± 705' S. & 105' W. OF NE COR. OF
W - SE OF SEC. 24

TIES - PIPE ON SEC. LINE
12.5 TO 6" OAK SW
11.9 TO 3" CHERRY

R/W - NO RECORD OF WIDTH



STA. 1+20
1-18" X 56"
REQ'D.

STA. 7+50
1-18" X 56"
REQ'D.

STA. 15+20
1-18" X 56"
REQ'D.

3°00' VC

0.0%

0.21%

1.5%

56.1 57.0 55.5 57.0 55.2 57.0 55.7 57.0 55.9 57.0 55.4 57.0 54.8 57.0 55.5 57.0 55.7 57.0 55.4 57.1 55.4 57.1 55.8 57.2 56.1 57.3 56.6 57.4 56.8 57.5 56.8 57.6 56.9 57.7 57.0 57.8 56.9 57.9 57.0 58.0 57.3 58.1 57.9 58.2 57.7 58.3 57.2 58.5 57.1 59.3 57.4 60.5 57.8 62.0 59.7 63.5 63.1 65.0 67.4 66.4 70.5 67.2 70.9 67.6

BENCH MARKS				
10	36+10	SPIKE IN 18" OAK	55' R	159.91
11	51+78	" " 8" "	60' L	158.51

SEC. 18
T 27 N
R 7 E

SEC. 13
T 27 N
R 6 E

SEC. 24
T 27 N
R 6 E

SEC. 19
T 27 N
R 7 E

89°16'
P.I. IRON
8.25' W. & 8.25' S. OF COR.
23.0 TO POWER POLE NW
62.9 TO HWY. SIGN ENE
69.0 TO BRIDGE RAIL ENE
75.4 TO " " ESE

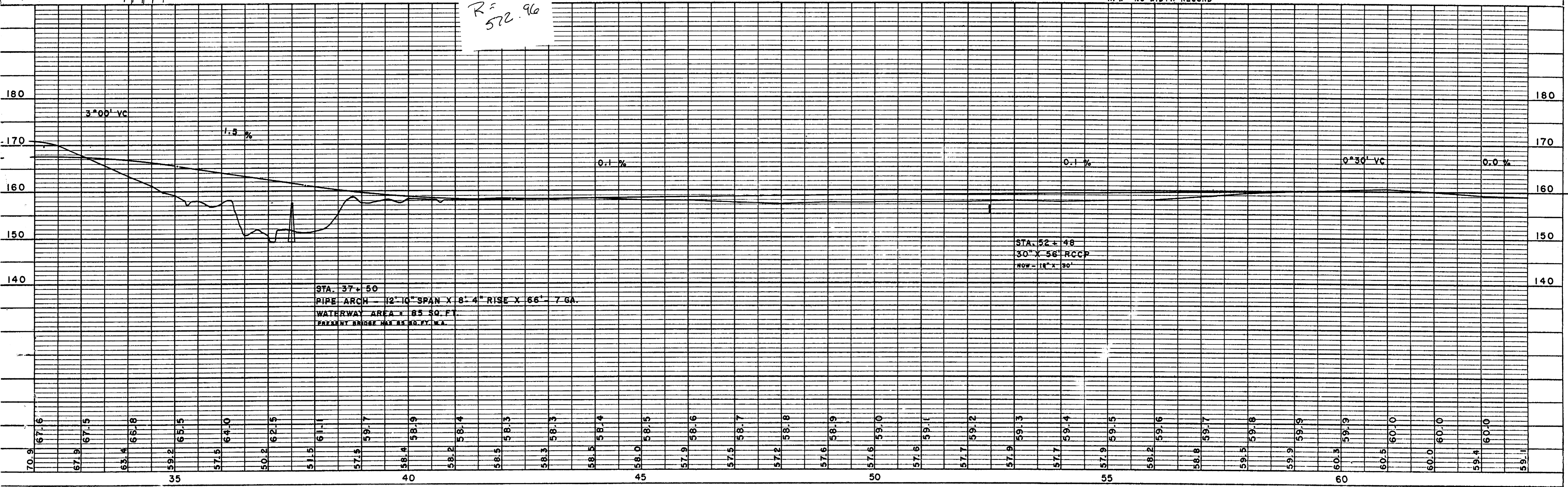
S-SW-FR. - ROSEMARIE RUD - SW-SE-EX.

NW-FR.-EX. - ERVIN DITTMANN - W-3/4 - NW-NE

D = 10°00'
A = 89°16'
T = 565.7'
L = 892.7'
E = 232.2'
PC = 32 + 73.6
PT = 41 + 66.3

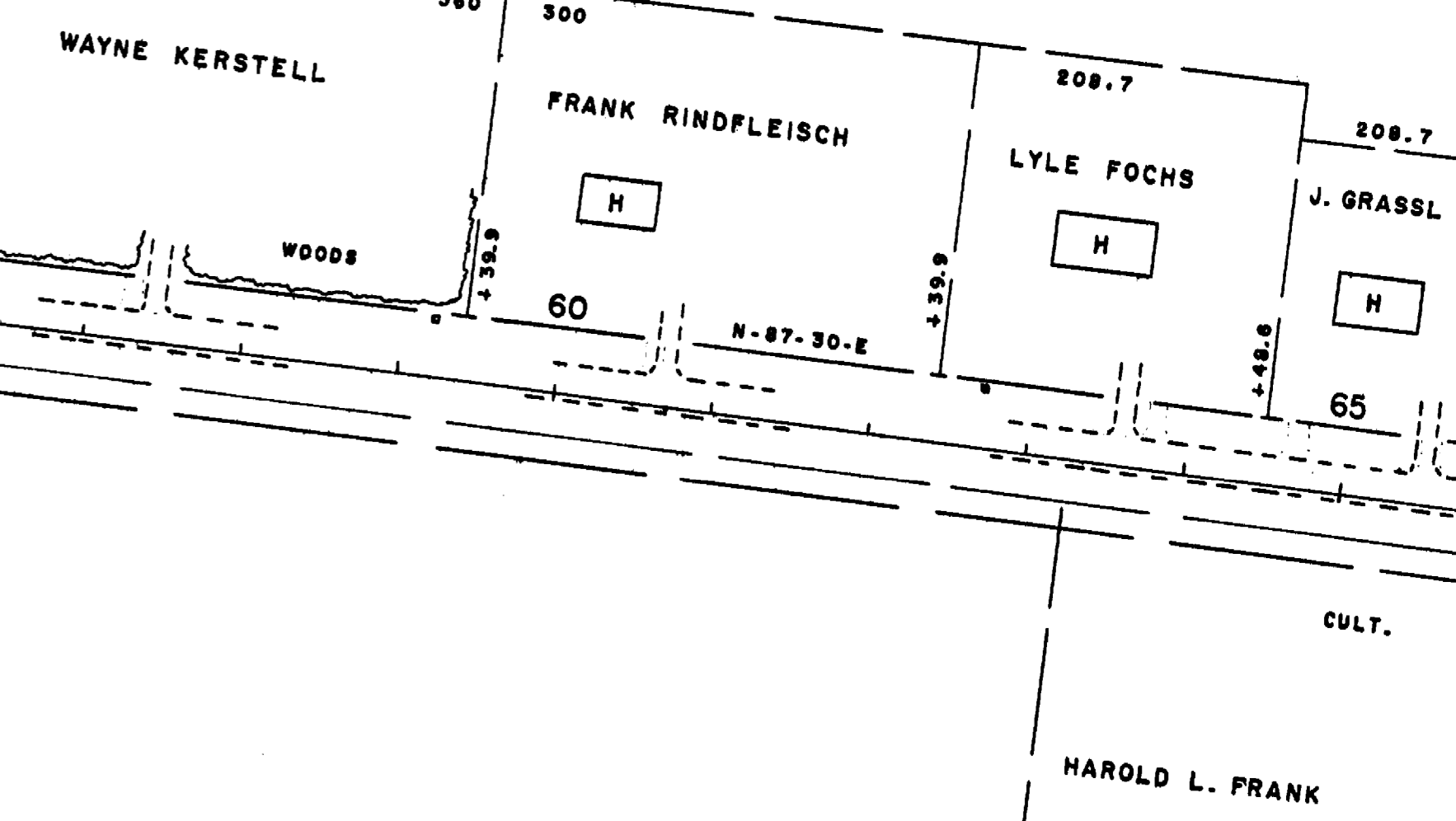
R/W - NO WIDTH RECORD

R = 572.96



STA. 37+50
PIPE ARCH - 12' 10" SPAN X 8' 4" RISE X 66" 7 GA.
WATERWAY AREA = 85 SQ. FT.
PRESENT BRIDGE HAS 24 SQ. FT. W.A.

STA. 52+48
30" X 56" RCCP
NOW - 18" X 30"



E-NE - JOHN ALTENBURG

BENCH MARKS				
12	67 + 50	SPIKE IN 12" PINE	60' L	159.03
13	89 + 87	" " 8" OAK	45' L	165.96

SEC. 19
T 27N
R 7E

SEC. 18
T 27N
R 7E

SEC. 17
T 27N
R 7E

D = 14°00'
Δ = 59°54'
T = 235.8'
L = 427.9'
E = 63.1'
PC = 89 + 32.7
PT = 73 + 60.6

D = 10°00'
Δ = 29°17'
T = 149.7'
L = 292.8'
E = 19.2'
PC = 86 + 10.3
PT = 89 + 03.1

END OF PROJECT
STA. 95 + 00.0 = 452.6' S. OF 1/4 COR.

R/W - NO WIDTH RECORD WEST - PLAT - 50' - 4 RODS NORTH

