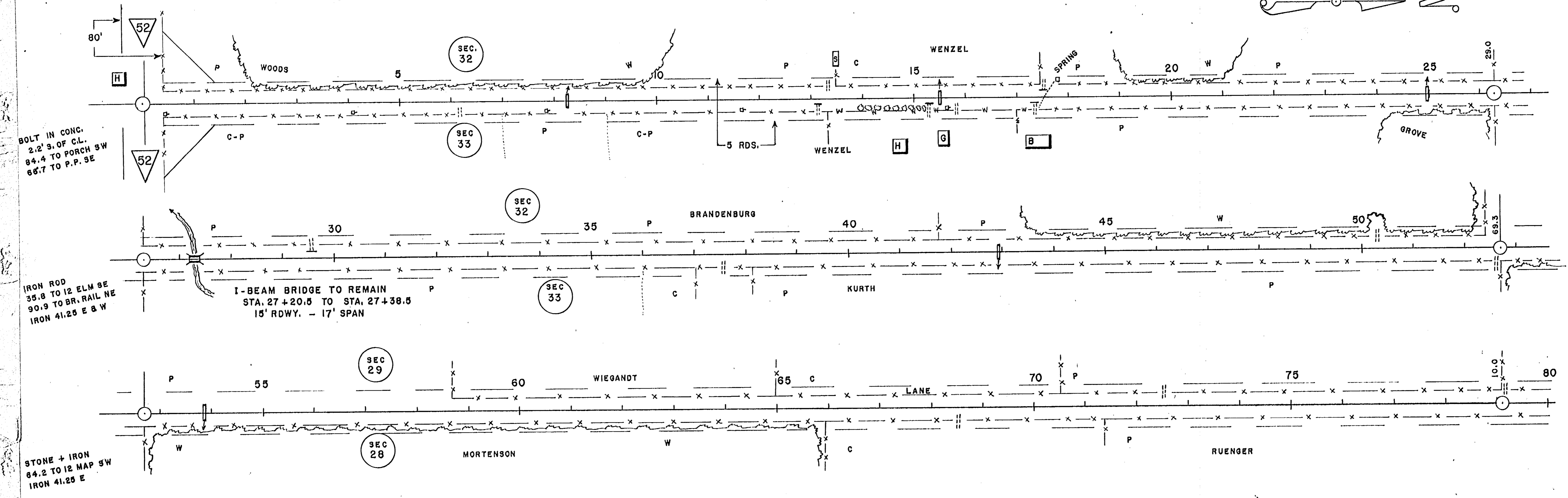
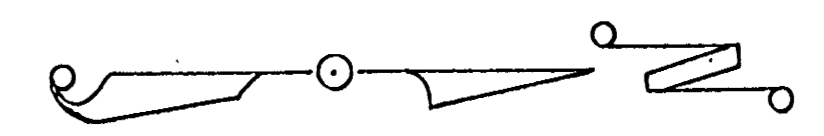


C.T.H. "Q" - HEWITT - 1950 T30N R9E

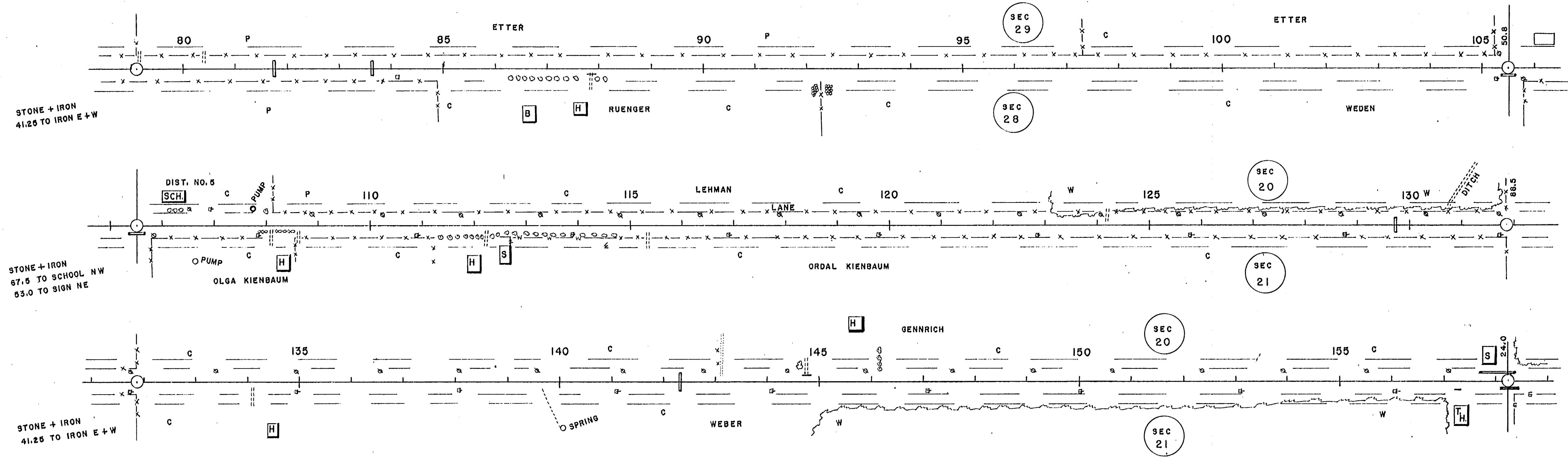
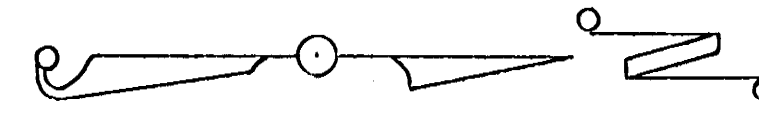


BOLT IN CONG.
2.2' S. OF C.L.
84.4 TO PORCH SW
66.7 TO P.P. SE

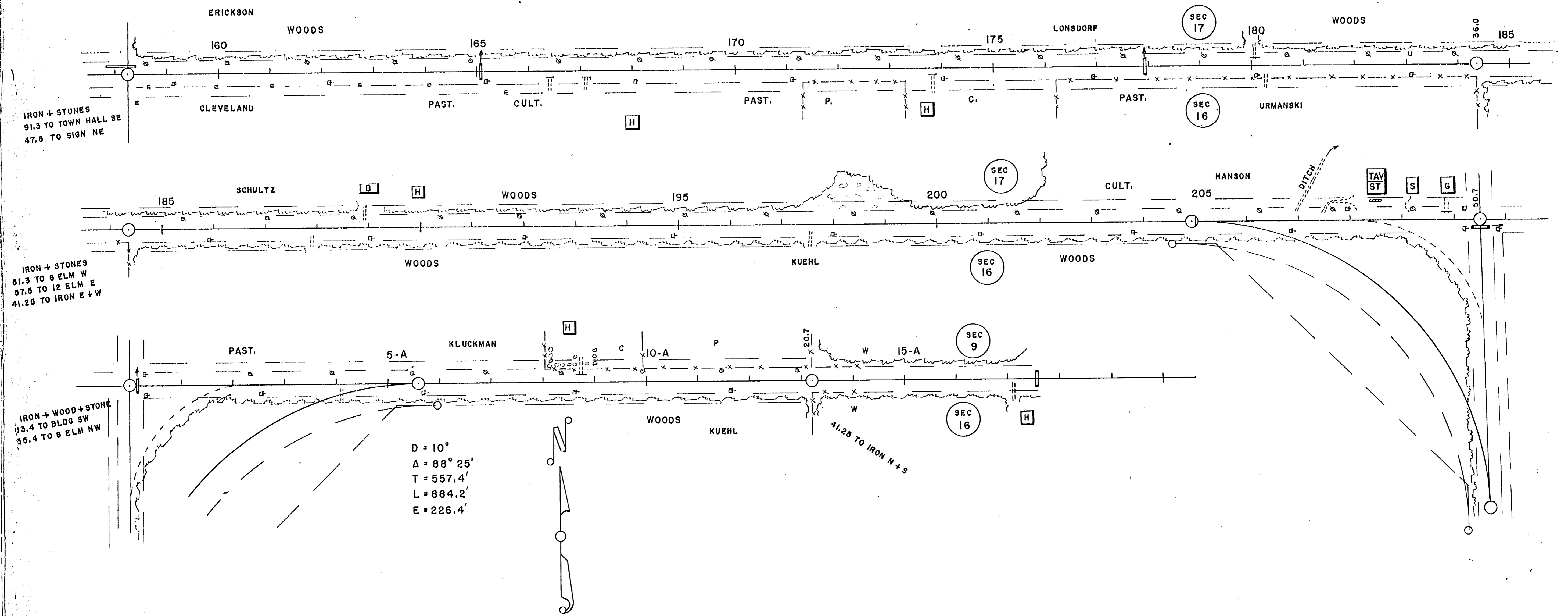
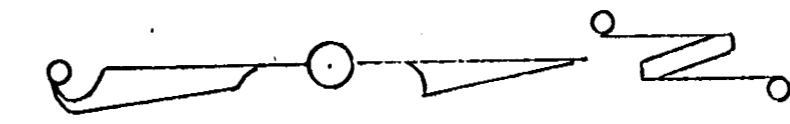
IRON ROD
35.8 TO 12 ELM SE
90.9 TO BR. RAIL NE
IRON 41.25 E & W

STONE + IRON
64.2 TO 12 MAP SW
IRON 41.25 E

C.T.H. "G" - HEWITT - 1950



C.T.H. "G" - HEWITT - 1950

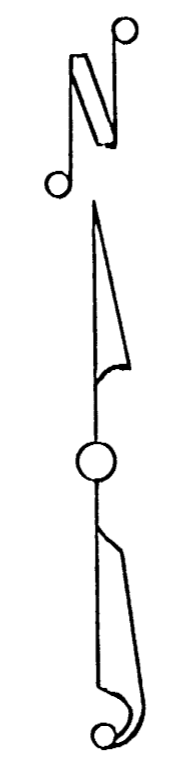


IRON + STONES
91.3 TO TOWN HALL SE
47.5 TO SIGN NE

IRON + STONES
51.3 TO 8 ELM W
97.5 TO 12 ELM E
41.25 TO IRON E + W

IRON + WOOD + STONE
33.4 TO BLDG SW
35.4 TO 8 ELM NW

$D = 10^\circ$
 $\Delta = 88^\circ 25'$
 $T = 557.4'$
 $L = 884.2'$
 $E = 226.4'$



41.25 TO IRON N + S