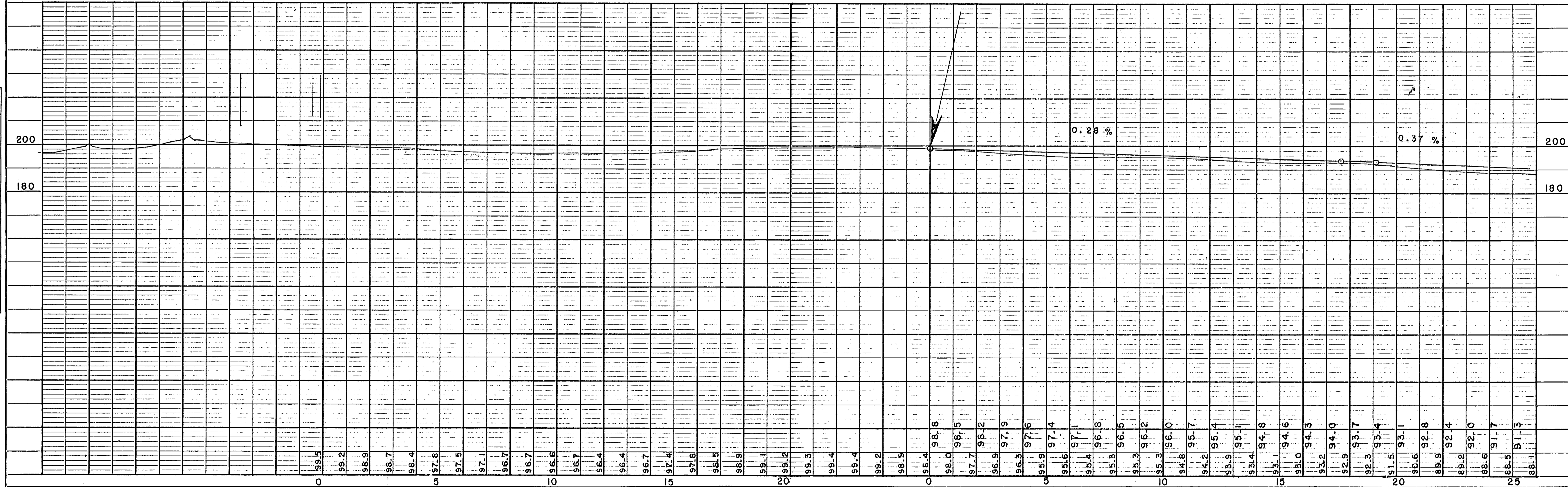
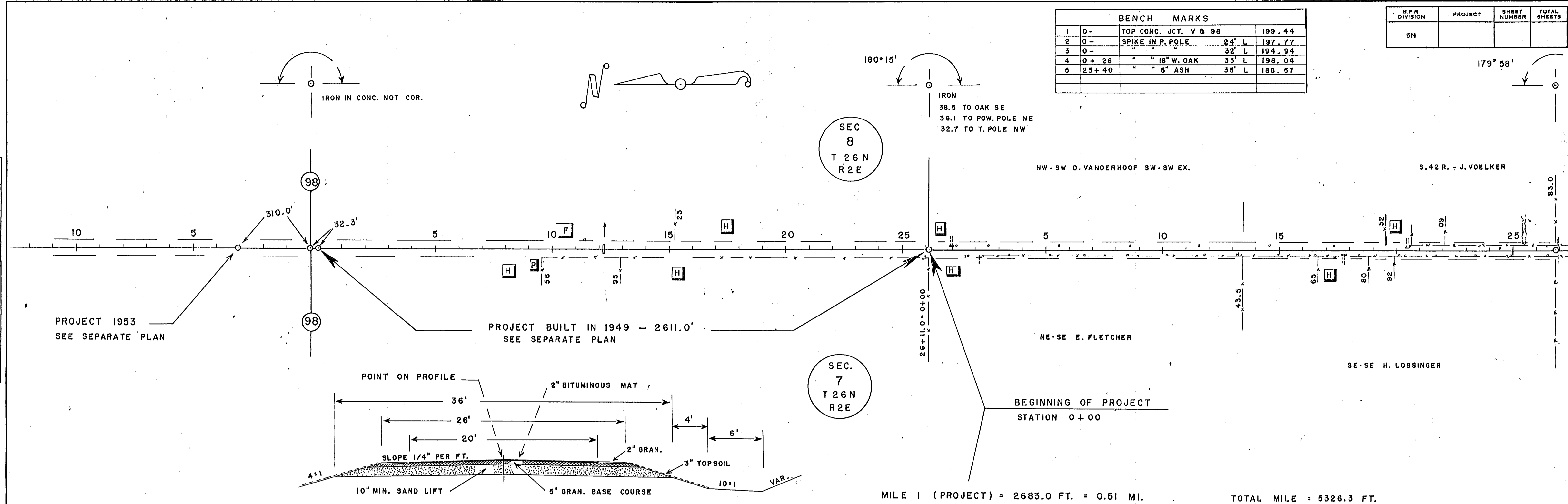


BENCH MARKS			
1	0-	TOP CONC. JCT. V & 98	199.44
2	0-	SPIKE IN P. POLE 24' L	197.77
3	0-	" " 32' L	194.94
4	0+26	" " 18" W. OAK 33' L	198.04
5	25+40	" " 6" ASH 35' L	188.57

B.P.R. DIVISION	PROJECT	SHEET NUMBER	TOTAL SHEETS
5N			

PLAN	DATE
BY C.E.C.	3-53
NOTE: SURVEYED, ALIGNED, CHECKED, AT. OF WAY CHECKED.	
NO.	

PROFILE	DATE
BY C.E.C.	3-53
NOTE: SURVEYED, GRADES CHECKED, B.M.'S NOTED, STRUCTURE NOTATIONS CH'GD.	
NO.	



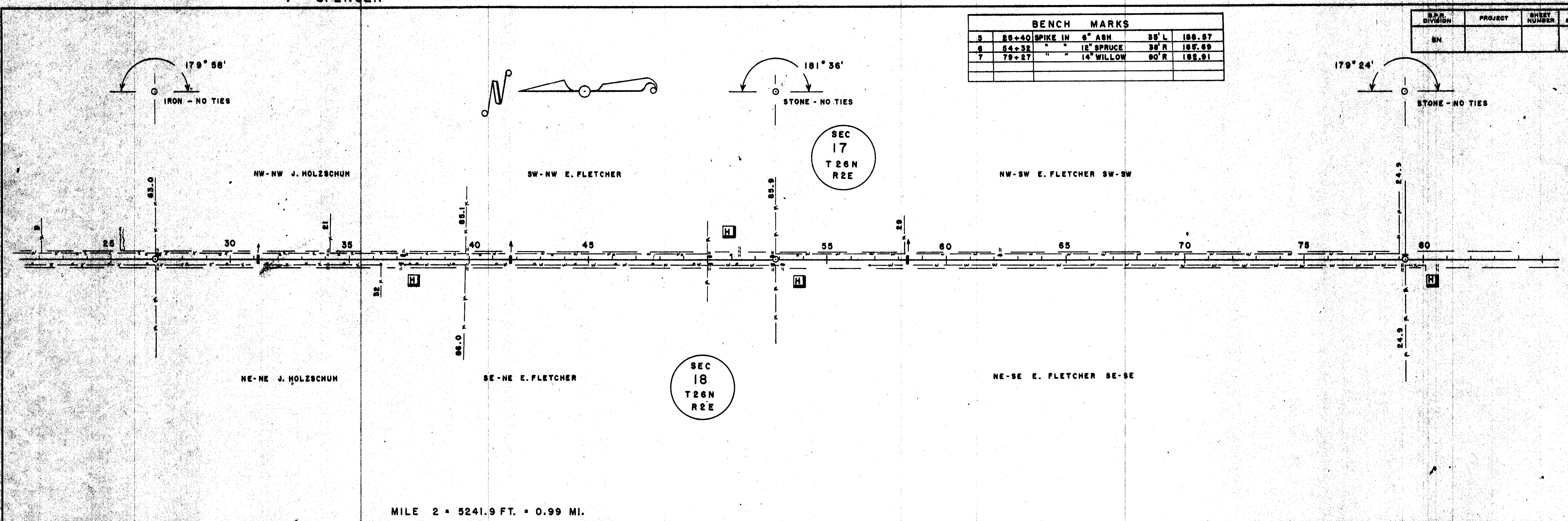
V - SPENCER

BENCH MARKS			
5	85+40	SPIKE IN 6" ASH	38'L 188.87
6	54+32	" " 12" SPRUCE	30'R 187.69
7	79+27	" " 14" WILLOW	30'R 182.91

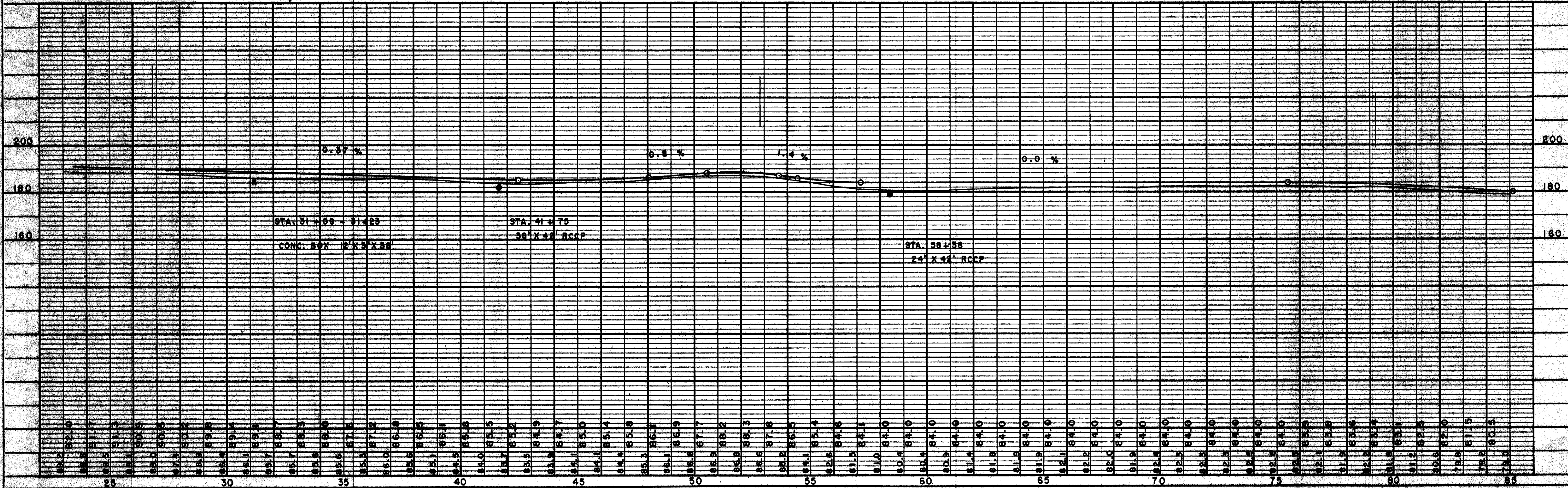
D.P.R. DIVISION	PROJECT	SHEET NUMBER	TOTAL SHEETS
BN			

DATE	BY	REVISION

DATE	BY	REVISION



MILE 2 = 5241.9 FT. = 0.99 MI.



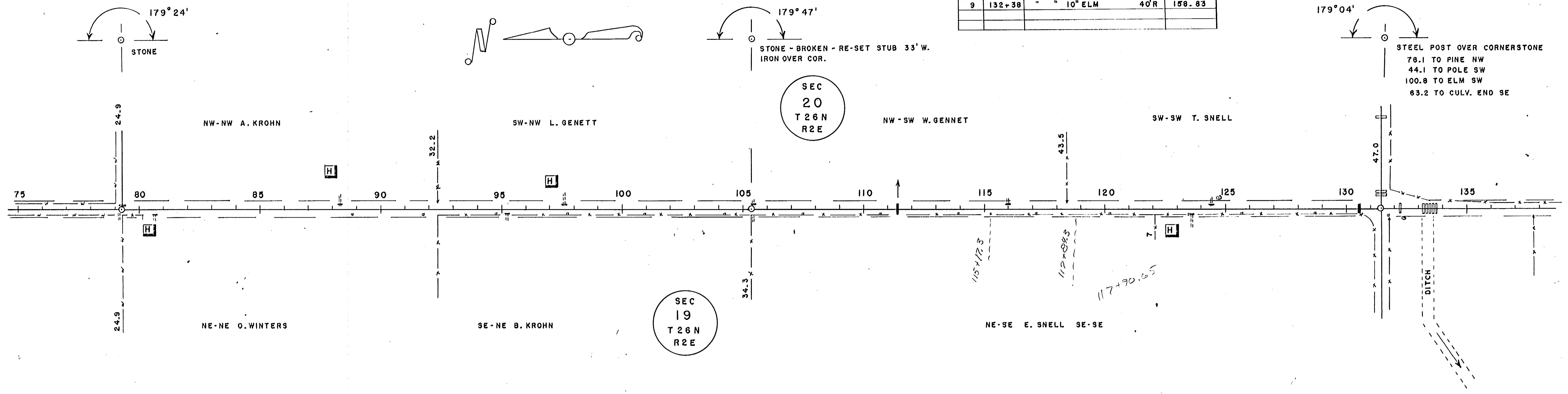
V - SPENCER

BENCH MARKS				
7	79+27	SPIKE IN 14" WILLOW	90'R	182.91
8	124+79	" " 24" OAK	35'L	164.24
9	132+38	" " 10" ELM	40'R	158.83

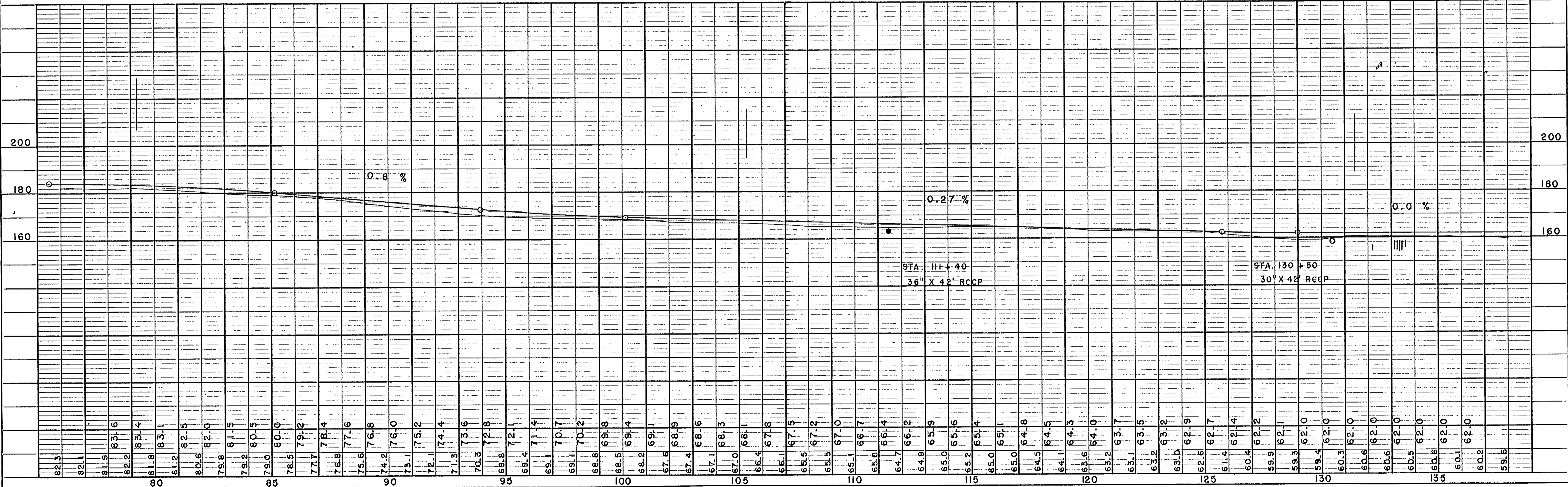
B.P.R. DIVISION	PROJECT	SHEET NUMBER	TOTAL SHEETS
5N			

PLAN	DATE
SURVEYED BY C. E. C.	3-53
PLOTTED BY C. E. C.	
NOTE BOOK NO.	

PROFILE	DATE
SURVEYED BY C. E. C.	3-53
PLOTTED BY C. E. C.	
NOTE BOOK NO.	



MILE 3 = 5222.1 FT. = 0.99 MI.

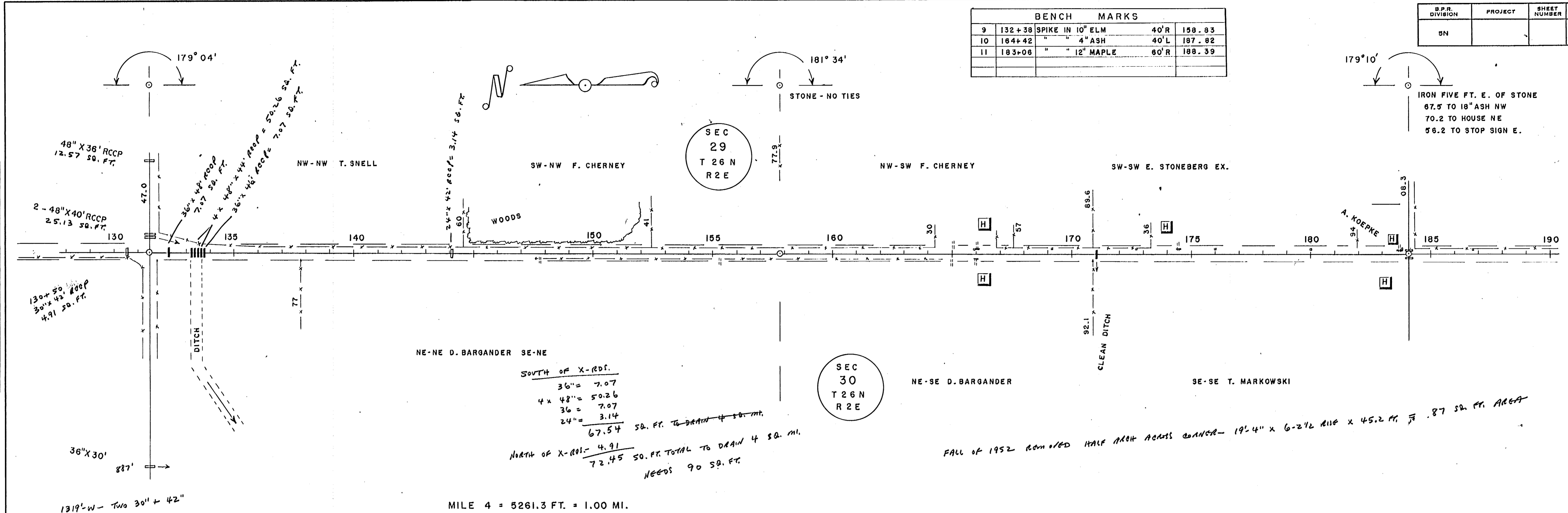


BENCH MARKS				
9	132+38	SPIKE IN 10" ELM	40'R	158.83
10	164+42	" " 4" ASH	40'L	187.82
11	183+06	" " 12" MAPLE	60'R	188.39

B.P.R. DIVISION	PROJECT	SHEET NUMBER	TOTAL SHEETS
5N			

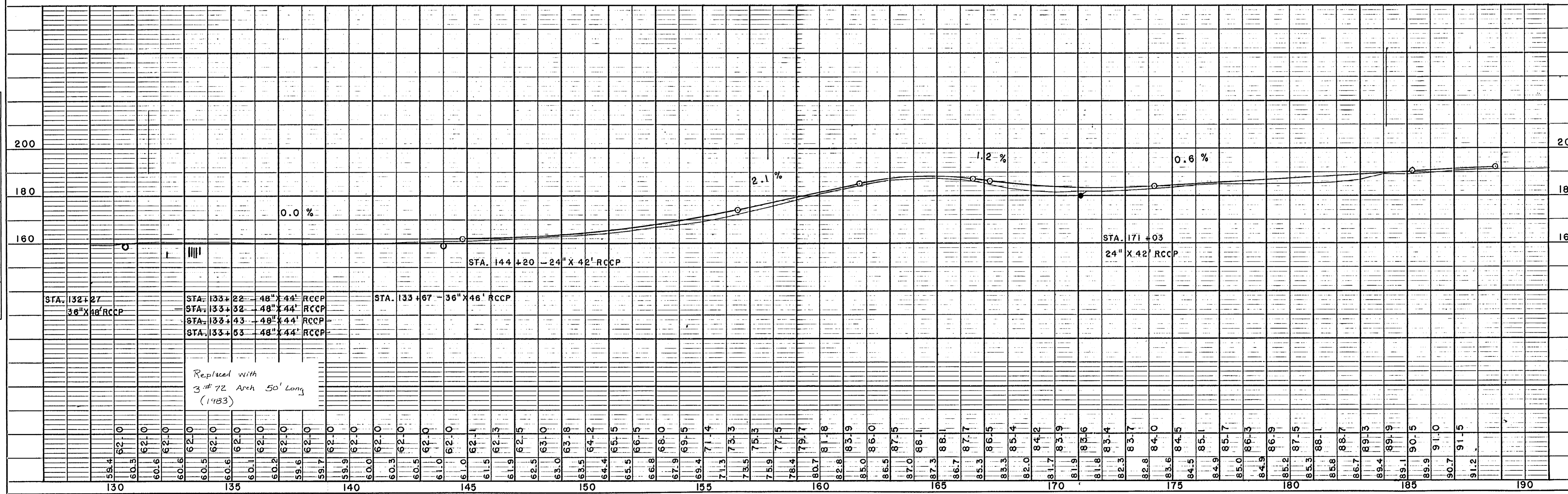
PLAN	DATE
SURVEYED	3-53
NOTED	
BY	C.E.C.
NOTE BOOK	
NO.	

PROFILE	DATE
SURVEYED	3-53
NOTED	
BY	C.E.C.
NOTE BOOK	
NO.	



SOUTH OF X-ROD.
 36" = 7.07
 4 x 48" = 50.26
 36" = 7.07
 24" = 3.14
 67.54 SO. FT. TO DRAIN 4 SQ. MI.
 NORTH OF X-ROD. - 4.91
 72.45 SO. FT. TOTAL TO DRAIN 4 SQ. MI.
 NEEDS 90 SQ. FT.

MILE 4 = 5261.3 FT. = 1.00 MI.

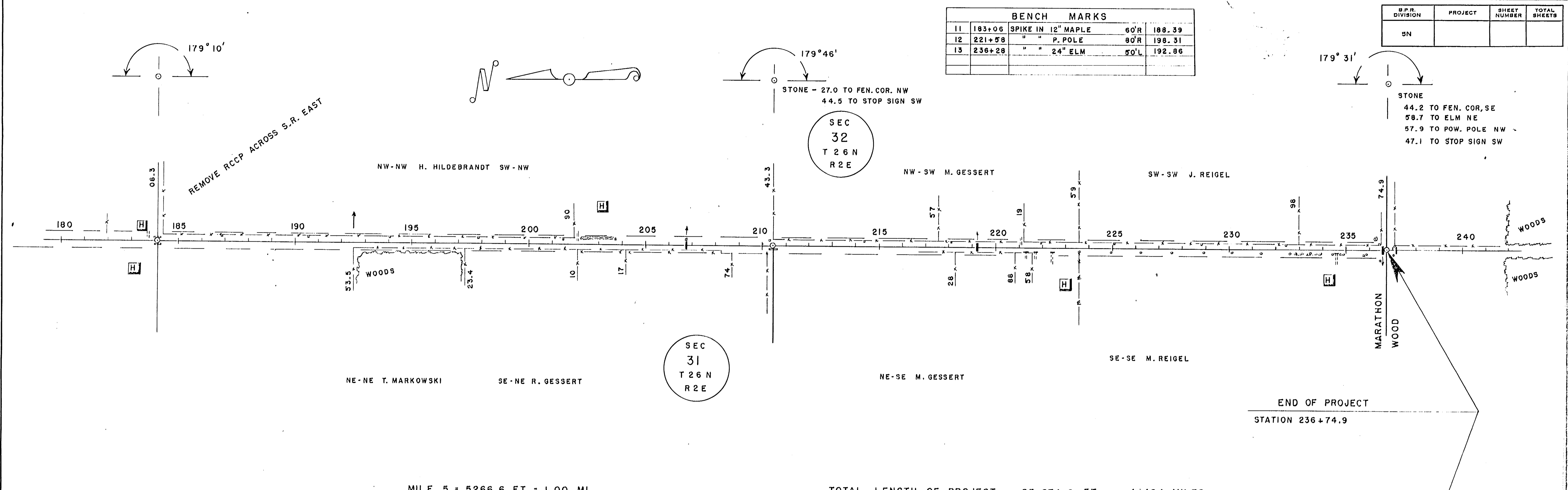


BENCH MARKS				
11	183+06	SPIKE IN 12" MAPLE	60'R	188.39
12	221+58	" " P. POLE	80'R	198.31
13	236+28	" " 24" ELM	50'L	192.86

S.P.R. DIVISION	PROJECT	SHEET NUMBER	TOTAL SHEETS
5N			

PLAN	DATE
BY: C.E.C.	3-53
DATE: 3-53	
BY: C.E.C.	
DATE: 3-53	
BY: C.E.C.	
DATE: 3-53	

PROFILE	DATE
BY: C.E.C.	3-53
DATE: 3-53	
BY: C.E.C.	
DATE: 3-53	
BY: C.E.C.	
DATE: 3-53	



MILE 5 = 5266.6 FT. = 1.00 MI. TOTAL LENGTH OF PROJECT = 23,674.9 FT. = 4.484 MILES

