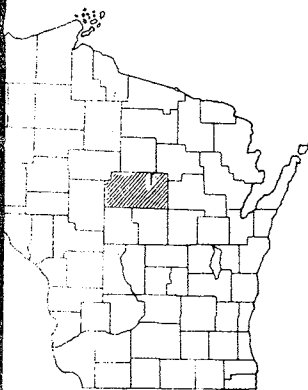


INDEX OF SHEETS

- NO. 1 TITLE
- NO. 1 TYPICAL CROSS SECTIONS
- NO. 1 ESTIMATE OF QUANTITIES
- NO. - MISCELLANEOUS QUANTITIES
- NO. - RIGHT OF WAY PLAT
- NO. 2-9 PLAN AND PROFILE STA. 1+44.7 TO STA. 355+94.1
- NO. - STANDARD DETAILS
- NO. - DRAINAGE STRUCTURES
- NO. - CROSS SECTIONS



STATE OF WISCONSIN
STATE HIGHWAY COMMISSION OF WISCONSIN

PLAN AND PROFILE OF PROPOSED
S.T.H.52-NORTH COUNTY LINE
 MARATHON COUNTY
 PROJECT S 0569 (5)

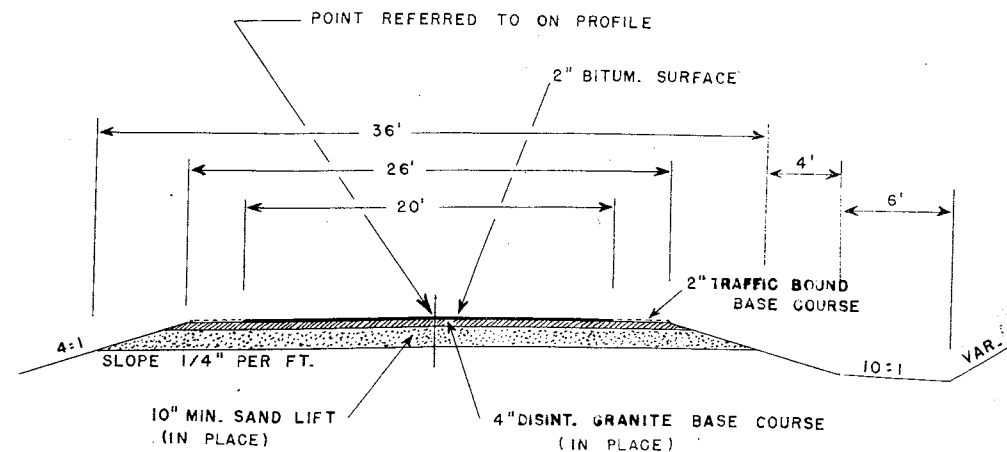
COUNTY AND HIGHWAY	ROUTE AND SECTION	CLASS AND AGREEMENT		FEDERAL DIVISION OFFICE	SHEET NUMBER	TOTAL SHEETS
		STATE	FEDERAL			
37.6	569.0		11.5	WIS. 5N	1	9

CONTRACT NO. 1

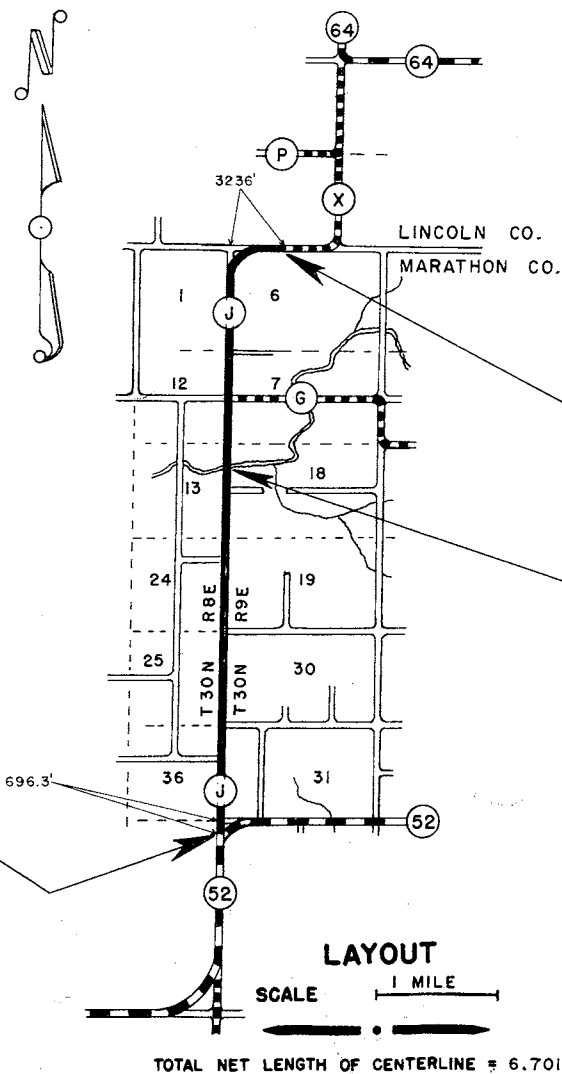
ESTIMATE OF QUANTITIES			
ITEM NO.	QUANTITY	UNIT	ITEM
2204-1	2100	CU. YD.	TRAFFIC BOUND BASE COURSE
2310-1	354	STA.	PREPARATION OF ROADBED FOR BITUMINOUS SURFACING
2313-1	78700	SQ. YD.	BITUMINOUS ROAD MIX SURFACE
2313-2	6200	CU. YD.	AGGREGATES FOR BITUMINOUS ROAD MIX SURFACE
2313-3	124000	GAL.	BITUMINOUS MATERIAL FOR SURFACE COURSE

THIS PROJECT IS TO BE EXECUTED UNDER THE STANDARD SPECIFICATIONS FOR ROAD AND BRIDGE CONSTRUCTION OF THE STATE HIGHWAY COMMISSION OF WISCONSIN - EDITION OF 1951. APPROVED JANUARY 23, 1952 FEDERAL AID REQUIRED CONTRACT PROVISIONS APPROVED NOV. 8, 1948, AND SPECIAL PROVISIONS AS ATTACHED TO PROPOSALS.

PLAN 1 IN. = 100 FT.
 PROFILE HOR. 1 IN. = 100 FT. VERT. 1 IN. = 10 FT.
 CROSS SECTIONS HOR. 1 IN. = 5 FT. VERT. 1 IN. = 5 FT.



TYPICAL SECTION



TOTAL NET LENGTH OF CENTERLINE = 6.701 MI.

END OF PROJECT S 0569 (5)
 STATION 355+94.1 = STA. 355+94.1 END OF PROJ. S 0569 (2)
 = STA. 0+00 BEG. S 0569 (3)

EXCEPTION TO NET CENTERLINE LENGTH
 STA. 207+13.8 TO STA. 207+82.0
 END OF PROJ. S 0569 (1) BEG. OF PROJ. S 0569 (2)

BEGINNING OF PROJECT S 0569 (5)
 STATION 1+44.7 = STA. 1+44.7 BEG. PROJ. S 0569 (1)

CONVENTIONAL SIGNS

LINE	-----	CULVERTS IN PLACE	-----
PROPERTY LINE	-----	CULVERTS REQUIRED	-----
SHIP OR RANGE LINE	-----	DROP INLET	-----
BOUNDARY LINE	-----	POWER POLE	-----
RIGHT OF WAY LINE	-----	TELEPHONE OR TELEGRAPH POLE	-----
LEFT RIGHT OF WAY LINE	-----	RIGHT OF WAY MARKERS	-----
FENCE { WOVEN	-----	REFERENCE STAKE FOR HUBS ONLY	-----
{ BARBED	-----	MARSH	-----
LINE	-----	HEDGE	-----
CITY OR CITY LIMITS	-----	TREES	-----
PROPERTY LINE	-----		
RAILROAD OR P.E.	-----		
ROADS	-----		
OR SURVEY LINE	-----		

STATE HIGHWAY COMMISSION OF WISCONSIN
 MADISON, WIS.

SURVEYOR: C.E.C. NOTE BOOK
 DIVISION COMPUTER: C.E.C. M.O. CHECKER
 DIVISION CHECKER: CORRECT

CORRECT:
 DATE 2/17/53 *W. J. Hanson*
 DIVISION ENGINEER

RECOMMENDED FOR APPROVAL:
 DATE 2-17-53 *C. E. C.*
 CONSTRUCTION ENGINEER

APPROVED:
 DATE 2/17/53 *E. C. Ruttig*
 STATE HIGHWAY ENGINEER

DEPARTMENT OF COMMERCE
 BUREAU OF PUBLIC ROADS

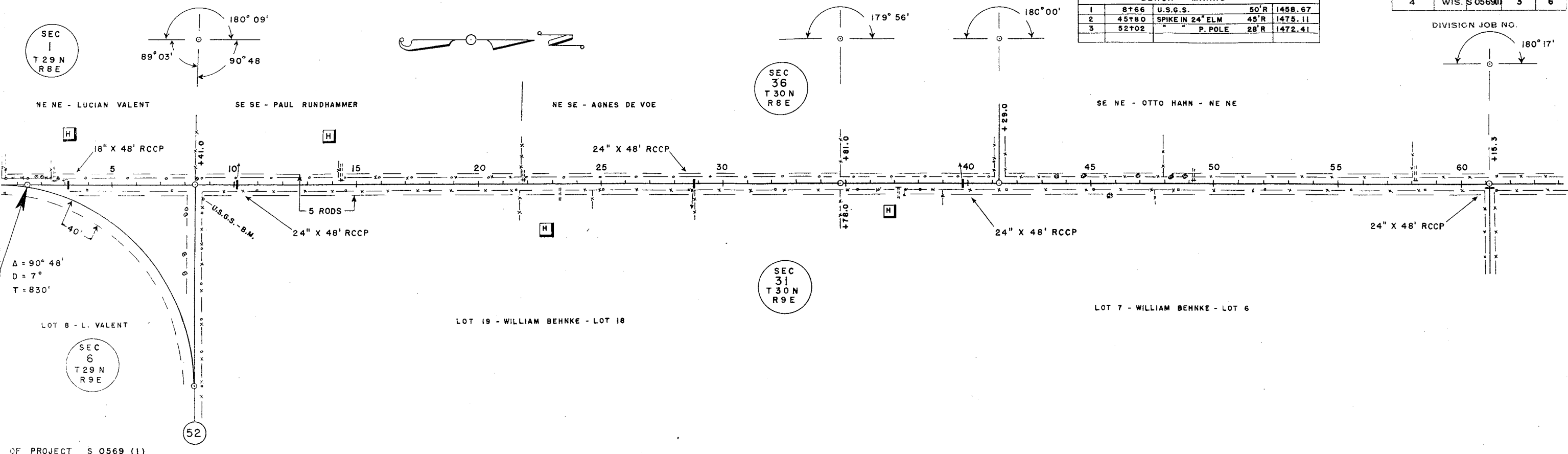
RECOMMENDED FOR APPROVAL:
 DISTRICT ENGINEER DATE

APPROVED:
 DIVISION ENGINEER DATE

FED. ROAD DIST. NO.	STATE	FED. AID PROJ. NO.	SHEET NO.	TOTAL SHEETS
4	WIS.	S 0569(1)	3	6

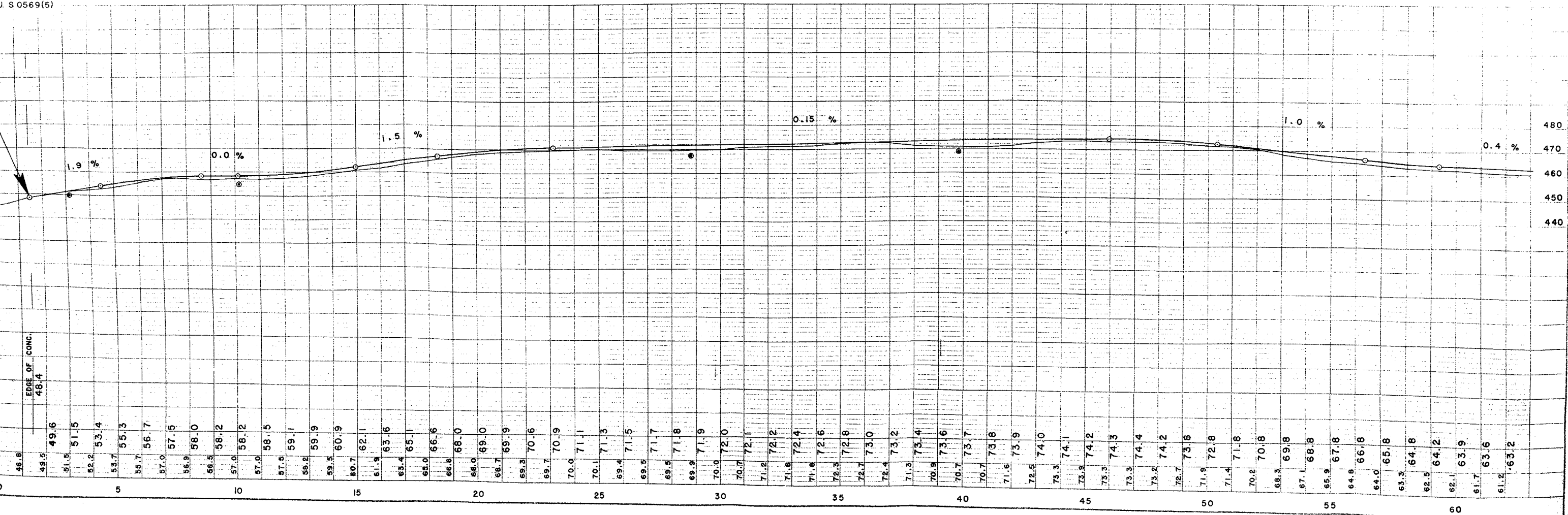
BENCH MARKS			
1	8+66	U.S.G.S.	50'R 1458.67
2	45+80	SPIKE IN 24" ELM	45'R 1475.11
3	52+02	P. POLE	28'R 1472.41

DIVISION JOB NO. 180° 17'



OF PROJECT S 0569 (1)
 IN 1 + 44.7 (= STA. 494 + 94.6 PROJ. NO. 4608)
 J. S 0569(5)

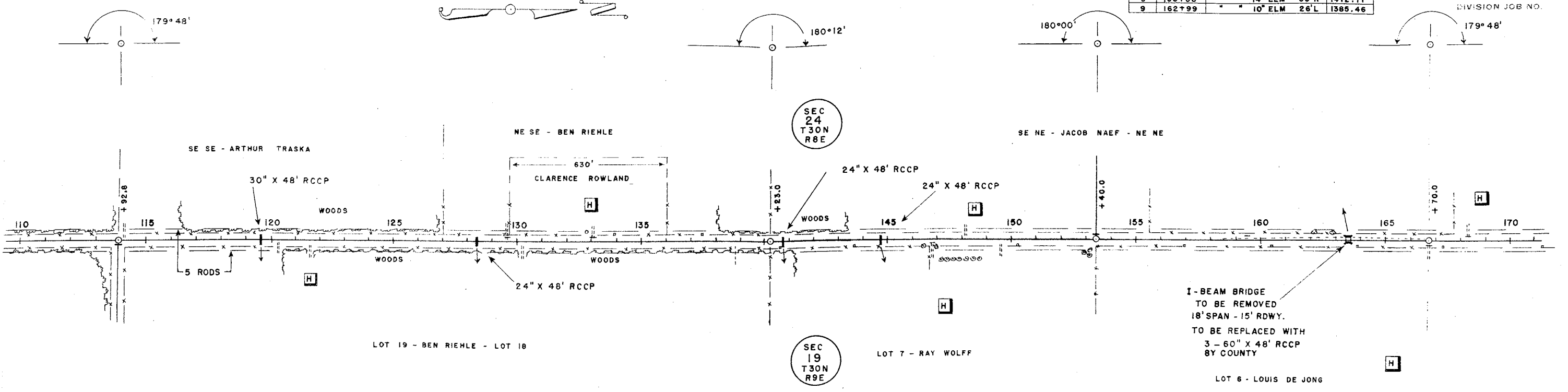
NET LENGTH OF CENTERLINE STA. 1 + 44.7 TO STA. 61 + 15.3 = 5970.6 LINEAR FT.



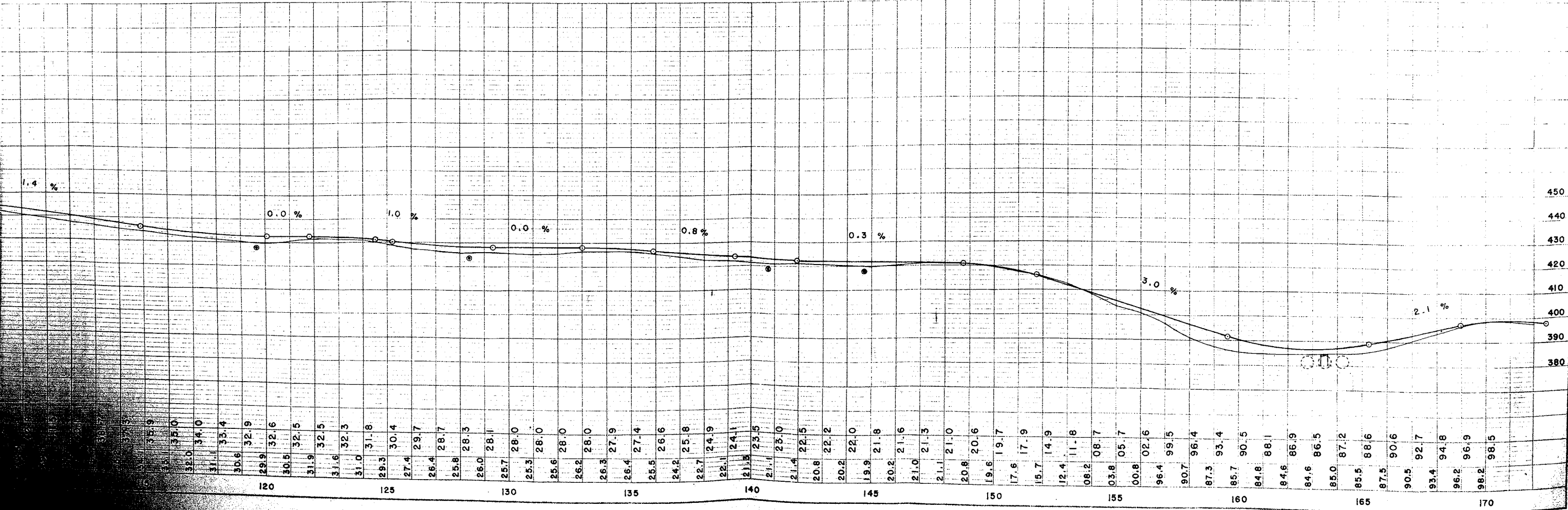
BENCH MARKS				
6	113+10	SPIKE IN	10" MAPLE	60'R 1437.07
7	133+55	"	6" ELM	40'R 1425.03
8	153+00	"	14" ELM	60'R 1412.71
9	162+99	"	10" ELM	26'L 1385.46

FED. ROAD DIST. P.M.	STATE	FED. AID PROJ. NO.	SHEET NO.	TOTAL SHEETS
4	WIS	S 0569(1)	5	6

DIVISION JOB NO.



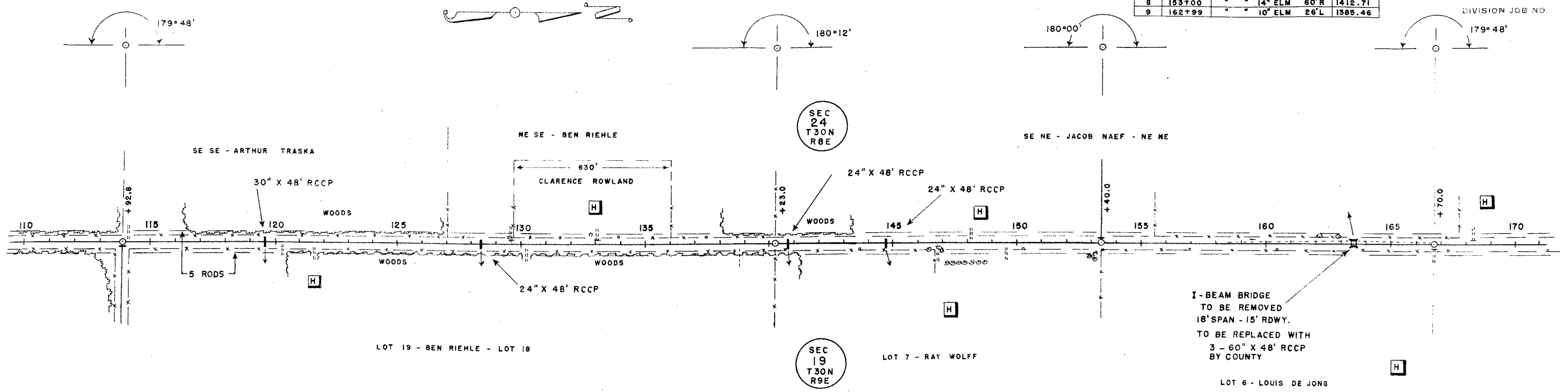
STA. 113 + 92.8 TO STA. 166 + 70.0 = 5277.2 FT.



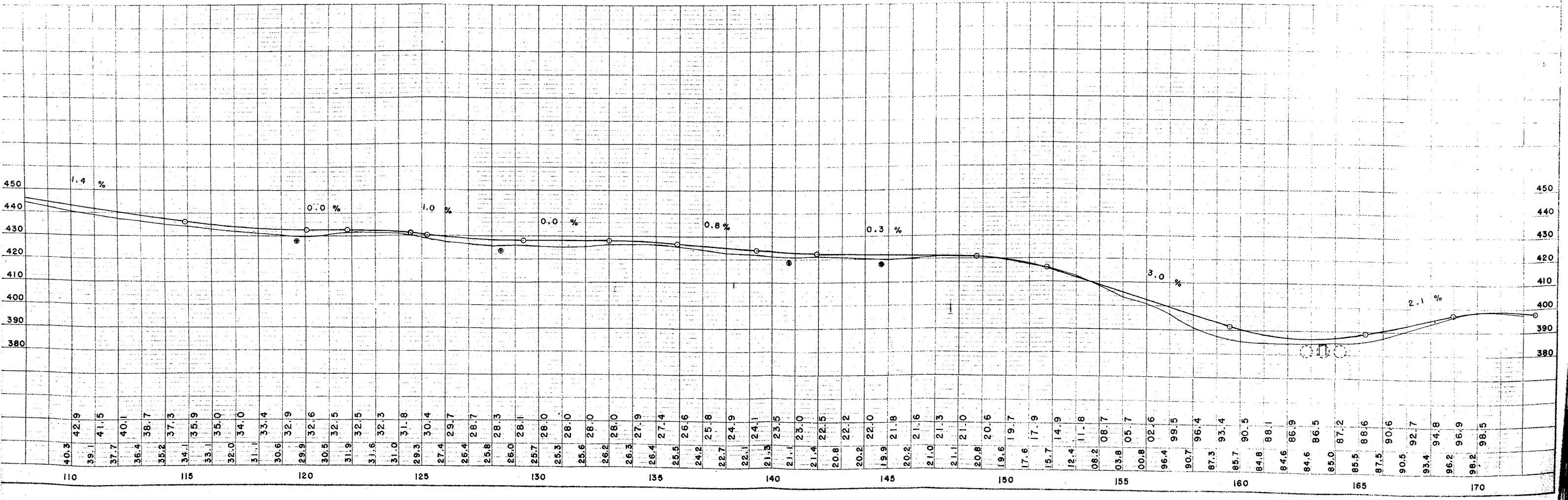
BENCH MARKS				
NO.	EASTING	DESCRIPTION	COORDINATE	ELEVATION
6	113+10	SPIKE IN 10" MAPLE 60'R	1437.07	
7	133+55	" " 6" ELM 40'R	1425.03	
8	153+00	" " 14" ELM 60'R	1412.71	
9	162+99	" " 10" ELM 26'L	1385.46	

FED. ROAD DIST. NO.	STATE	FED. AID PROJ. NO.	SHEET NO.	TOTAL SHEETS
4	WIS.	S0569(1)	5	6

DIVISION JOB NO.



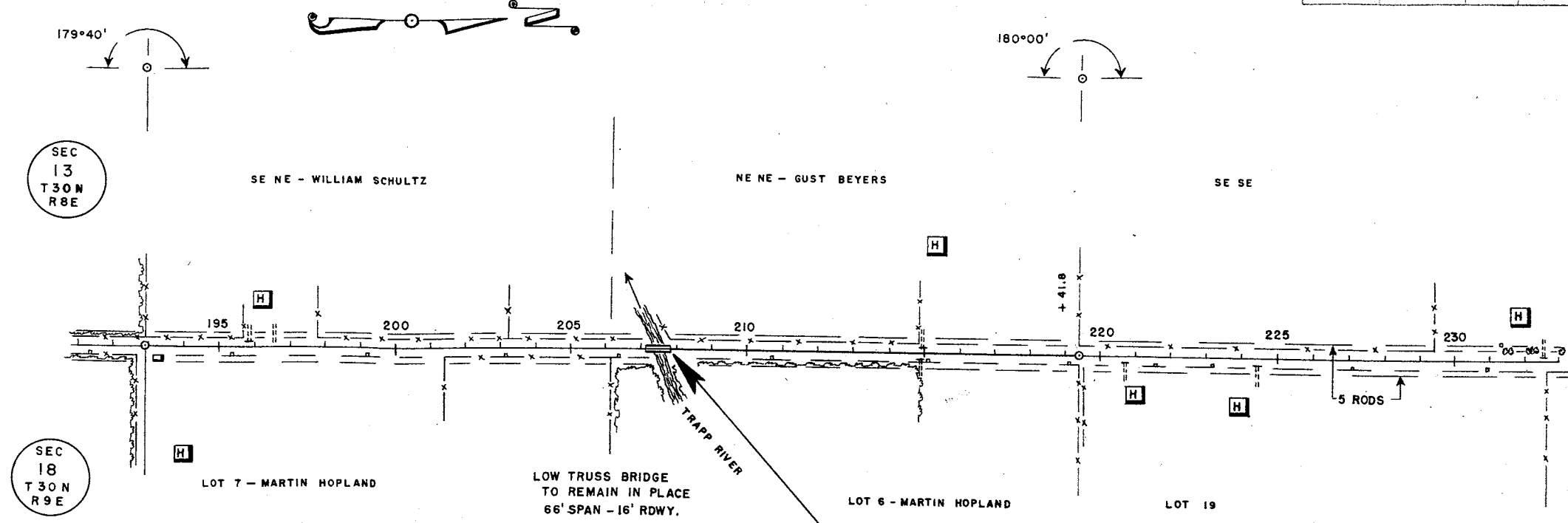
STA. 113 + 92.8 TO STA. 166 + 70.0 = 5277.2 FT.



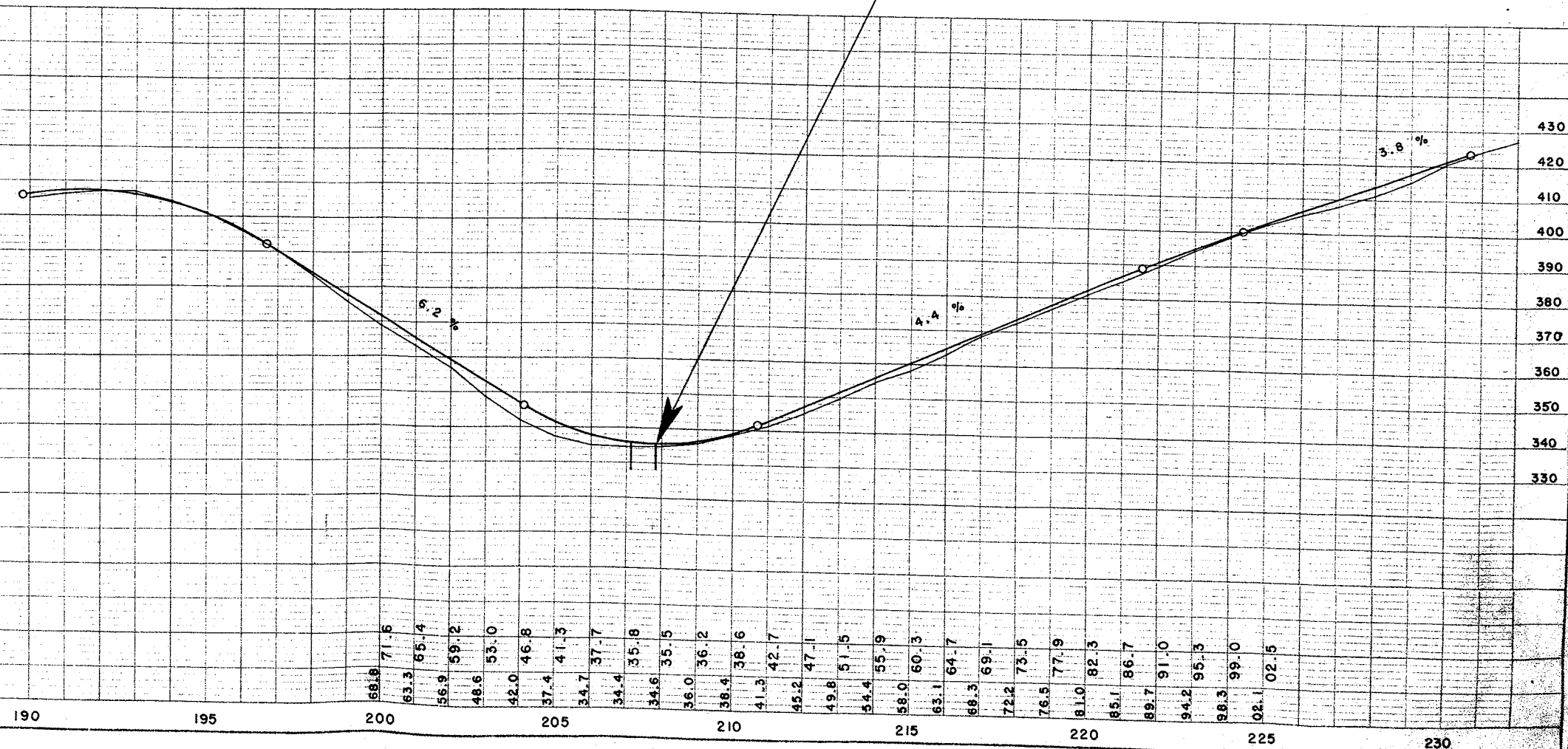
BENCH MARKS				
10	190+07	SPIKE IN 10" ELM	50' R	1407.29
11	195+29	"	P. POLE 28' R	1402.89
12	206+44	"	P. POLE 28' R	1336.41
13	210+72	"	12" ELM 70' R	1339.62
14	231+33	"	P. POLE 60' L	1426.96

S 0569(5)		G-9	
W/S	50569(2)	2	6

Handwritten notes:
 190+07
 195+29
 206+44
 210+72
 231+33



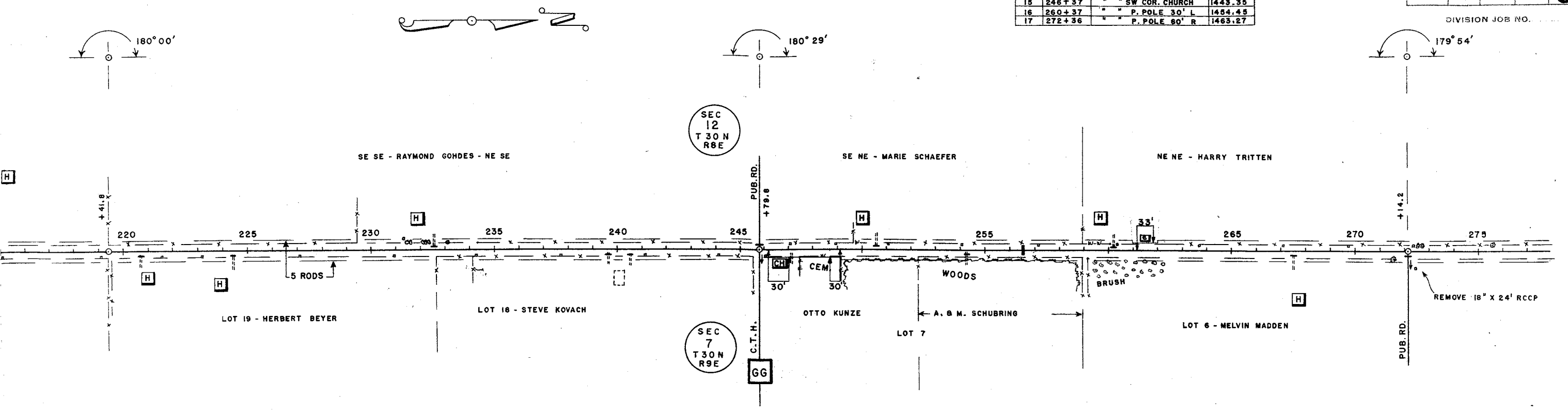
BEGINNING OF PROJECT
 STATION 207 + 82.0



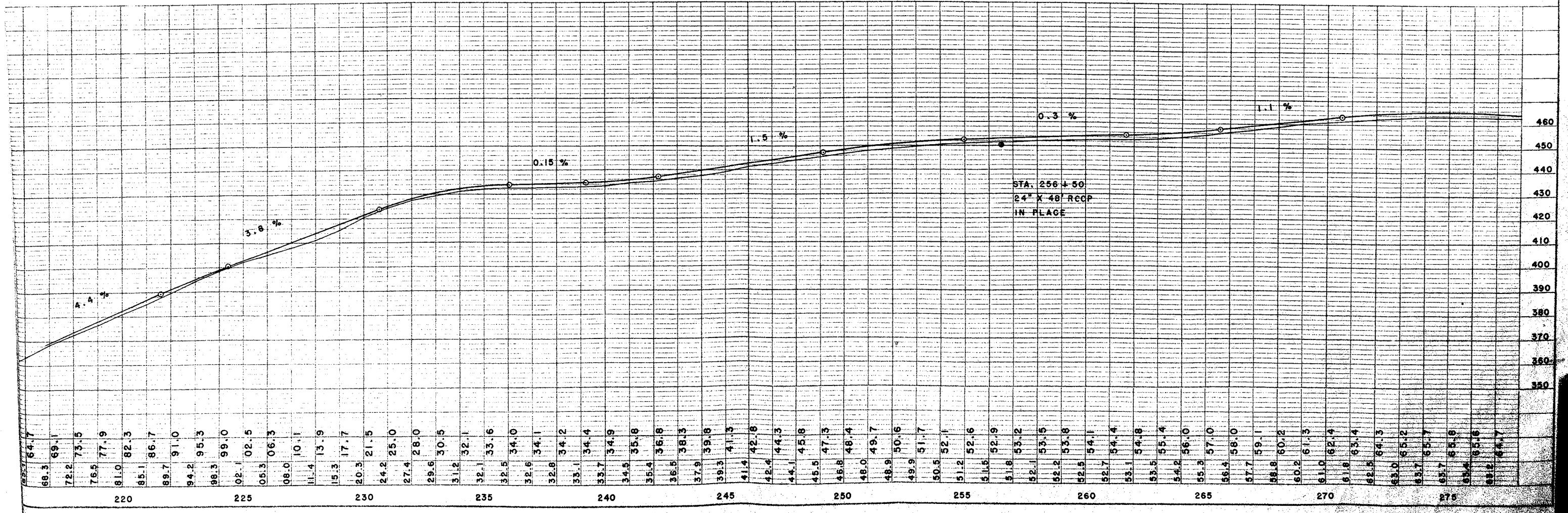
BENCH MARKS				
14	231+33	SPIKE IN P. POLE	60' L	1425.96
15	246+37	" " SW COR. CHURCH		1443.35
16	260+37	" " P. POLE	30' L	1484.45
17	272+36	" " P. POLE	90' R	1463.27

FED. ROAD DIST. NO.	STATE	FED. AID PROJ. NO.	SHEET NO.	TOTAL SHEETS
4	WIS.		3	6

DIVISION JOB NO.



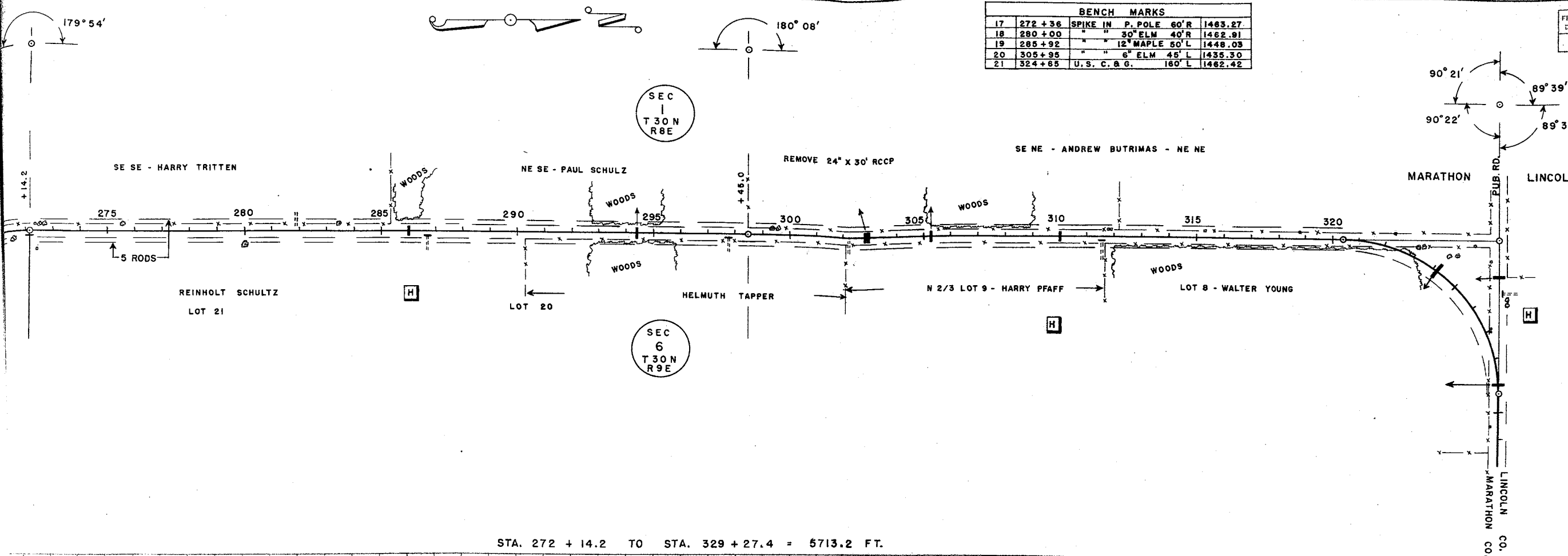
STA. 219 +41.8 TO STA. 272 +14.2 = 5272.4 FT.



FED. ROAD DIST. NO.	STATE	FED. AID PROJ. NO.	SHEET NO.	TOTAL SHEETS
4	WIS.		4	6

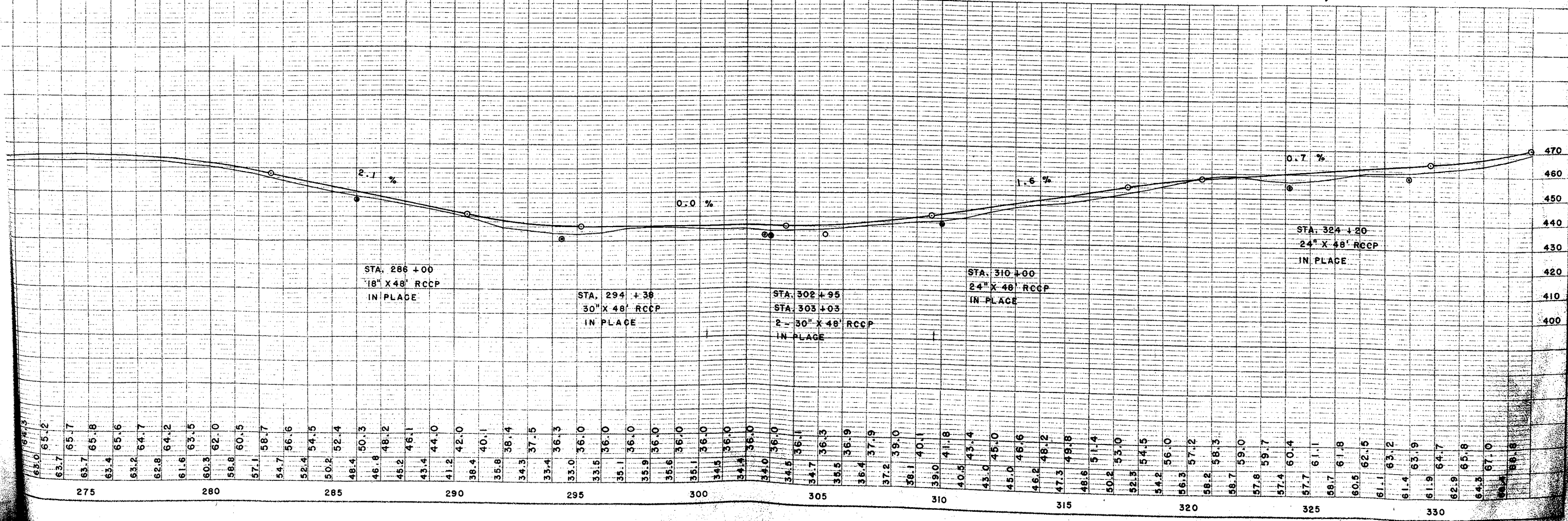
DIVISION JOB NO.

BENCH MARKS				
17	272 + 36	SPIKE IN	P. POLE	60' R 1463.27
18	280 + 00	"	30" ELM	40' R 1462.91
19	285 + 92	"	12" MAPLE	50' L 1448.03
20	305 + 95	"	6" ELM	45' L 1435.30
21	324 + 65	U.S. C. & G.	160' L	1462.42



$\Delta = 89^\circ 38'$
 $D = 10'$
 $T = 569.4'$
 $L = 896.3'$
 $E = 234.8'$
 $P.C. = 320 + 31.1$
 $P.T. = 329 + 27.4$

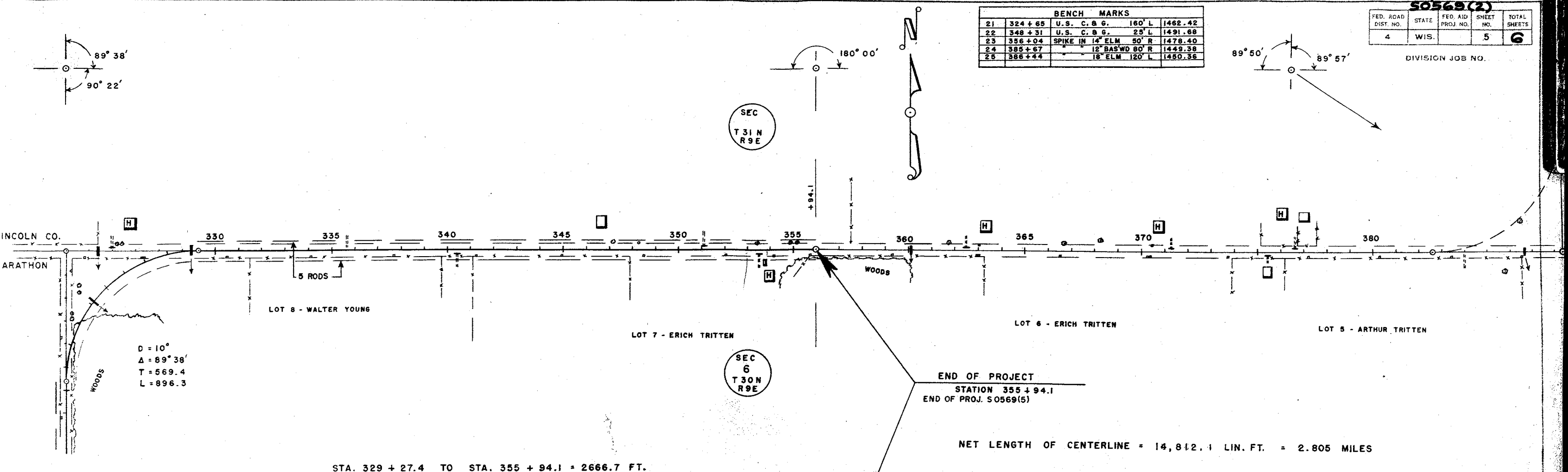
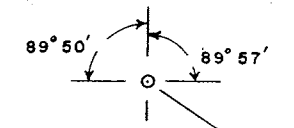
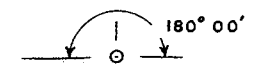
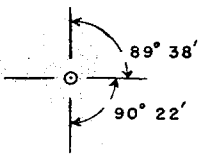
STA. 272 + 14.2 TO STA. 329 + 27.4 = 5713.2 FT.



Station	Elevation
275	65.0
276	65.12
277	65.7
278	65.8
279	65.6
280	64.7
281	64.2
282	63.5
283	62.0
284	60.5
285	58.7
286	56.6
287	54.5
288	52.4
289	48.4
290	46.8
291	45.2
292	43.4
293	41.2
294	38.4
295	37.5
296	36.3
297	36.0
298	36.0
299	36.0
300	36.0
301	36.0
302	36.0
303	36.1
304	36.3
305	35.9
306	36.4
307	37.9
308	39.0
309	40.1
310	41.8
311	43.4
312	45.0
313	46.6
314	48.2
315	49.8
316	51.4
317	53.0
318	54.5
319	56.0
320	57.2
321	58.3
322	59.0
323	59.7
324	60.4
325	61.1
326	61.8
327	62.5
328	63.2
329	63.9
330	64.7
331	65.8
332	67.0
333	68.6

DIVISION JOB NO.

BENCH MARKS				
21	324 + 65	U.S. C. & G.	160' L	1462.42
22	348 + 31	U.S. C. & G.	25' L	1491.68
23	356 + 04	SPIKE IN 14" ELM	50' R	1478.40
24	385 + 67	12" BAS'WD 80' R		1449.38
25	386 + 44	18" ELM	120' L	1480.36



D = 10°
 Δ = 89° 38'
 T = 569.4
 L = 896.3

