

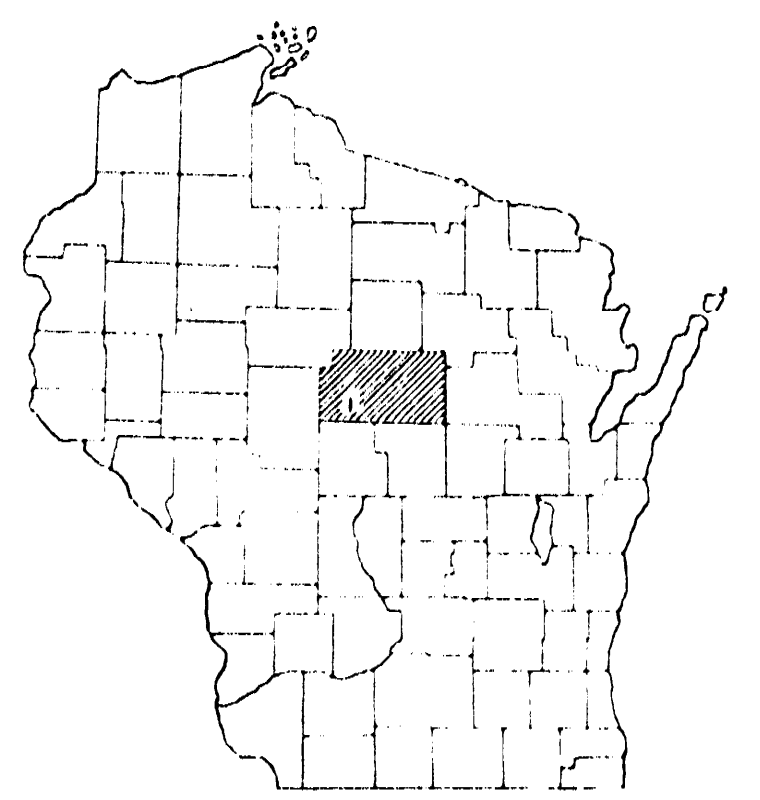
COUNTY AND HIGHWAY	ROUTE AND SECTION	CLASS AND AGREEMENT	FEDERAL DIVISION OFFICE	SHEET NUMBER	TOTAL SHEETS
		STATE FEDERAL	WIS. 4		

INDEX OF SHEETS

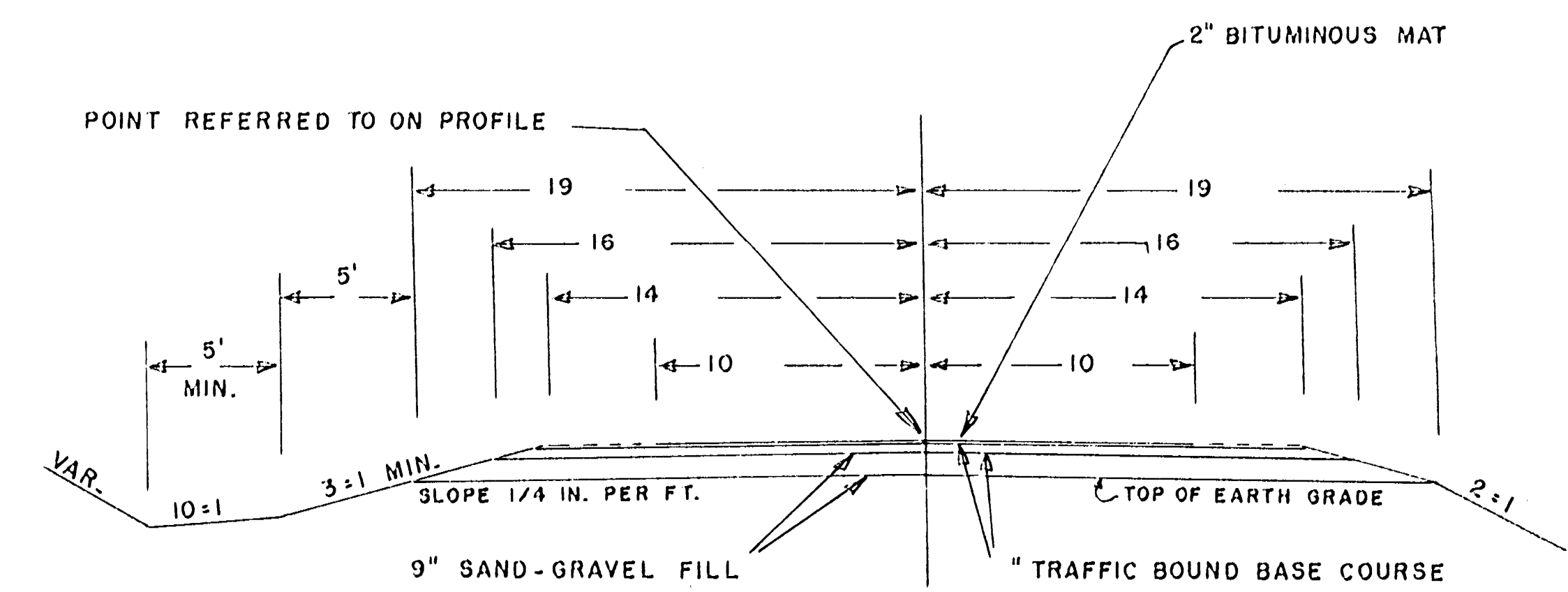
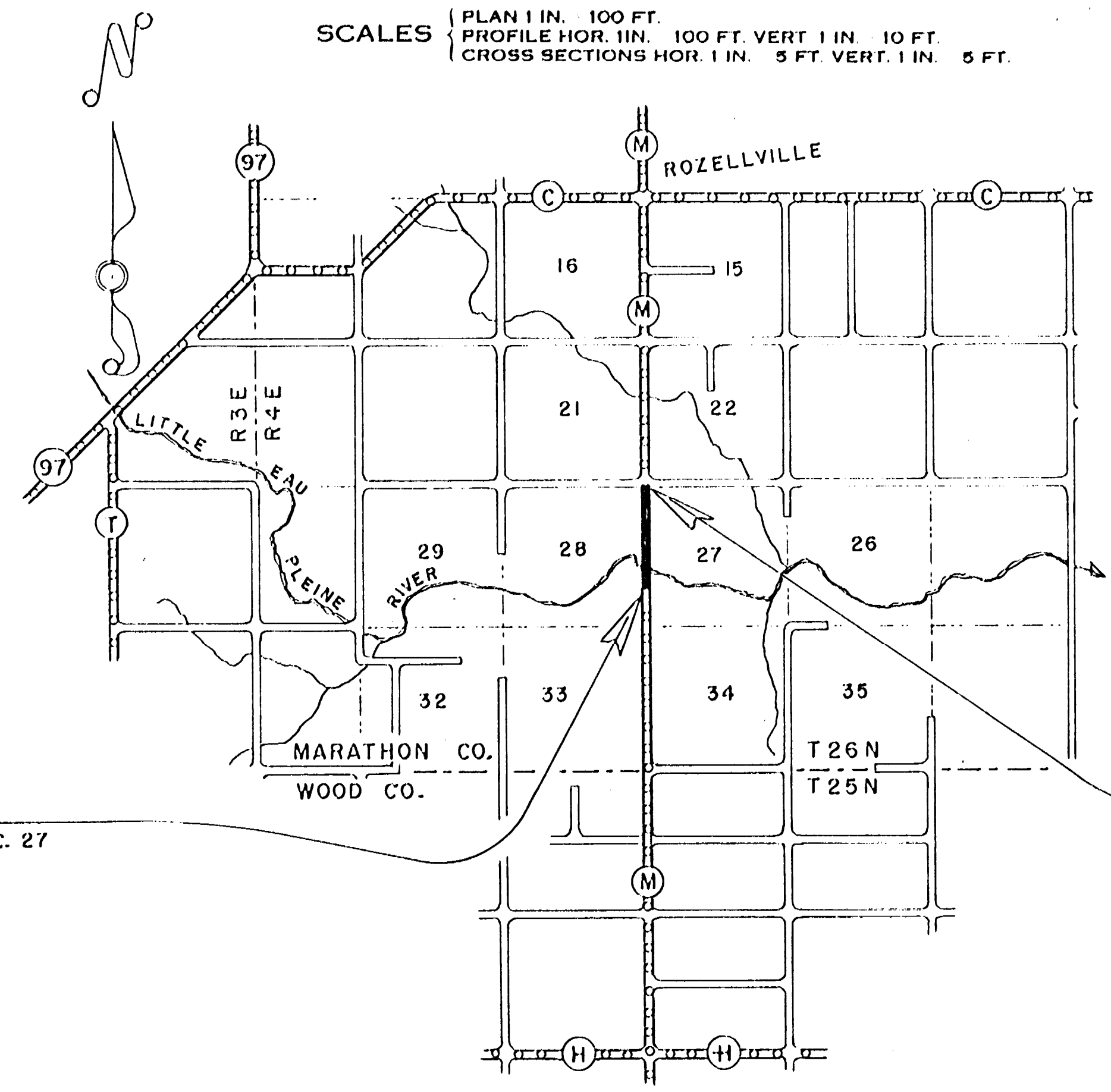
SHEET NO.	TITLE
1	TYPICAL CROSS SECTIONS
	ESTIMATE OF QUANTITIES
	MISCELLANEOUS QUANTITIES
	RIGHT OF WAY PLAT
	PLAN AND PROFILE STA. TO STA.
	STANDARD DETAILS
	DRAINAGE STRUCTURES
	CROSS SECTIONS

STATE OF WISCONSIN
STATE HIGHWAY COMMISSION OF WISCONSIN

PLAN AND PROFILE OF PROPOSED



SCALES
 PLAN 1 IN. = 100 FT.
 PROFILE HOR. 1 IN. = 100 FT. VERT. 1 IN. = 10 FT.
 CROSS SECTIONS HOR. 1 IN. = 5 FT. VERT. 1 IN. = 5 FT.



BEGINNING OF PROJECT
 STA. 66+18.0 = SW COR. OF NW-SW OF SEC. 27

END OF PROJECT
 STA. 105+91.5 = NW COR. OF SEC. 27

CONVENTIONAL SIGNS			
STATE LINE	CULVERTS IN PLACE
COUNTY LINE	CULVERTS REQUIRED
TOWNSHIP OR RANGE LINE	DROP INLET
SECTION LINE	POWER POLE
NEW RIGHT OF WAY LINE	TELEPHONE OR TELEGRAPH POLE
PRESENT RIGHT OF WAY LINE	RIGHT OF WAY MARKERS
WIRE FENCE {WOVEN BARBED}	REFERENCE STAKE FOR HUBS ONLY
LOT LINE	MARSH
CORPORATE OR CITY LIMITS	HEDGE
PROPERTY LINE	TREES
TRAVELED WAY OR P.E.	GROUND ELEVATION	DATUM LINE 73.3
RAILROADS	GRADE ELEVATION	DATUM LINE 73.3
BASE OR SURVEY LINE		

LAYOUT
 SCALE ONE MILE
 TOTAL NET LENGTH OF CENTERLINE = 0.753 MI.

STATE HIGHWAY COMMISSION OF WISCONSIN
 MADISON, WIS.

SURVEYOR: C. E. C. NOTE BOOK: M. 67
 DIVISION COMPUTER: M. O. CHECKER
 DISTRICT CHECKER: CORRECT

CORRECT:
 DATE: _____ DISTRICT ENGINEER

RECOMMENDED FOR APPROVAL:
 DATE: _____ ENGINEER OF DESIGN

APPROVED:
 DATE: _____ STATE HIGHWAY ENGINEER

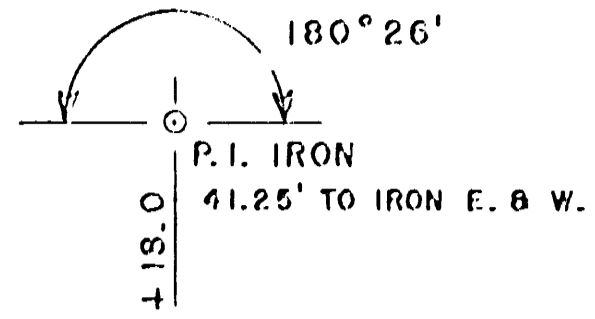
DEPARTMENT OF COMMERCE
 BUREAU OF PUBLIC ROADS

APPROVED: _____ DATE: _____
 DISTRICT ENGINEER

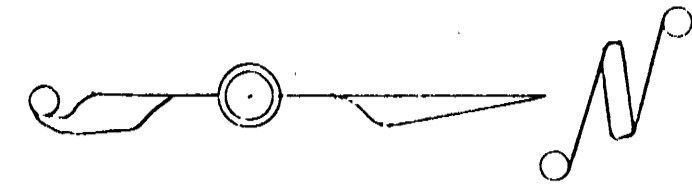
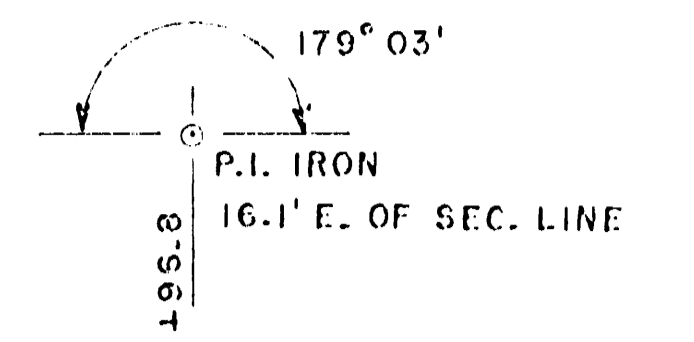
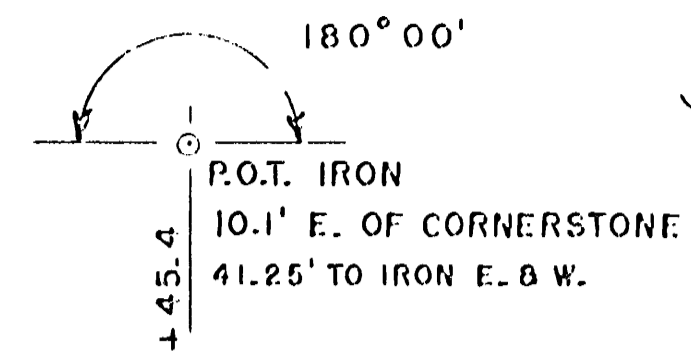
GULDAN BRIDGE - C.T.H. "M"

BENCH MARKS			
4	60+00	SPIKE IN 12" ELM	55' L. 149.48
5	74+41	" " 8" ELM	70' L.
6	92+93	" " 15" ELM	65' R.

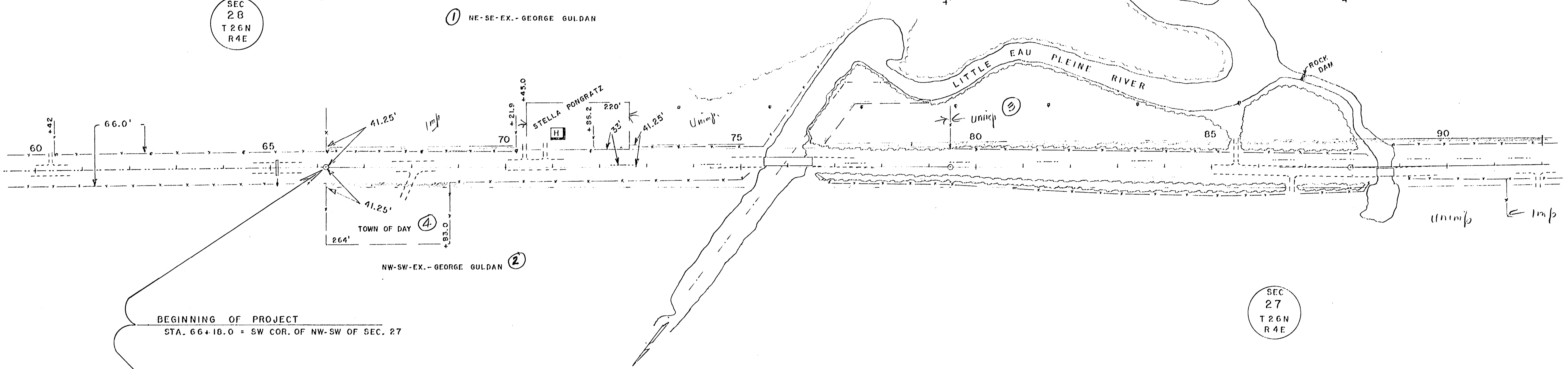
SEC 28
T 26N
R 4E



① NE-SE-EX. - GEORGE GULDAN



DATE 12-59
BY C. E. C.
REVISIONS
PLAN NOTE BOOK NO.



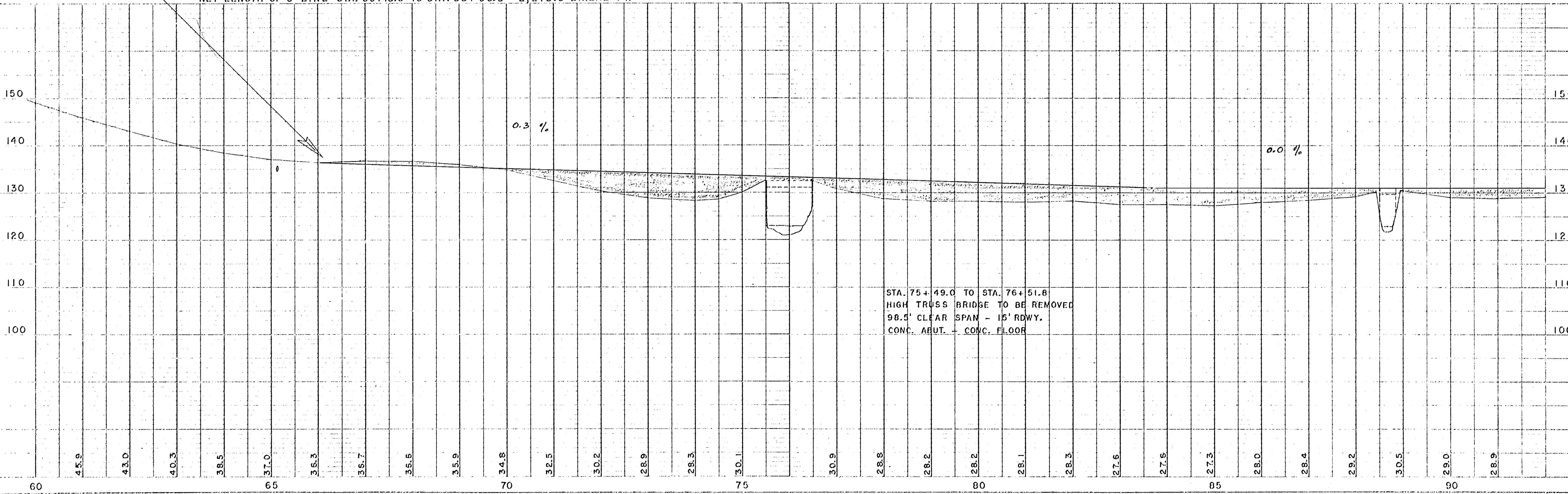
② NW-SW-EX. - GEORGE GULDAN

SEC 27
T 26N
R 4E

BEGINNING OF PROJECT
STA. 66+18.0 = SW COR. OF NW-SW OF SEC. 27

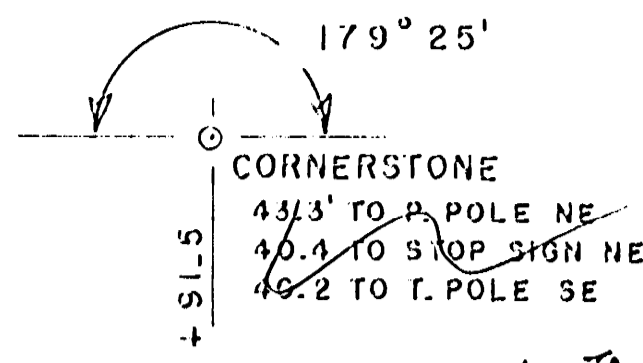
NET LENGTH OF C-LINE STA. 66+18.0 TO STA. 88+96.8 = 2,278.8 LINEAL FT.

DATE 12-59
BY C. E. C.
REVISIONS
PROFILE NOTE BOOK NO.

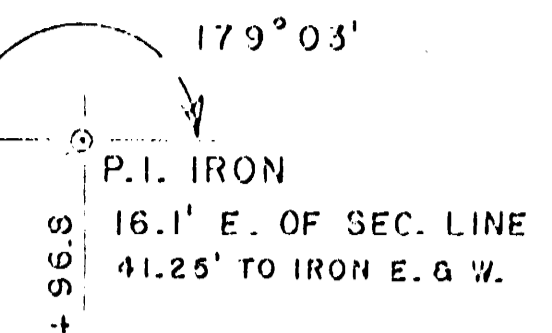


STA. 75+49.0 TO STA. 76+51.8
HIGH TRUSS BRIDGE TO BE REMOVED
98.5' CLEAR SPAN - 15' RDWY.
CONC. ABUT. - CONC. FLOOR

BENCH MARKS			
6	92+93	SPIKE IN 15" ELM	65' R
7	100+52	" " 18" OAK	95' R
8	110+40	" " P. POLE	33' L
	99+25	TOP U.S.G.S.	33' L 1132.51



28 APR. 1967
 45.4' to Row. Pole - NE
 35.2' to Steel Sign - SW
 47.0' to Steel Post - SW
 41.0' to Tol. Pole - SE
 40.3' to Fence cor. - NW



SEC
 28
 T 26 N
 R 4 E

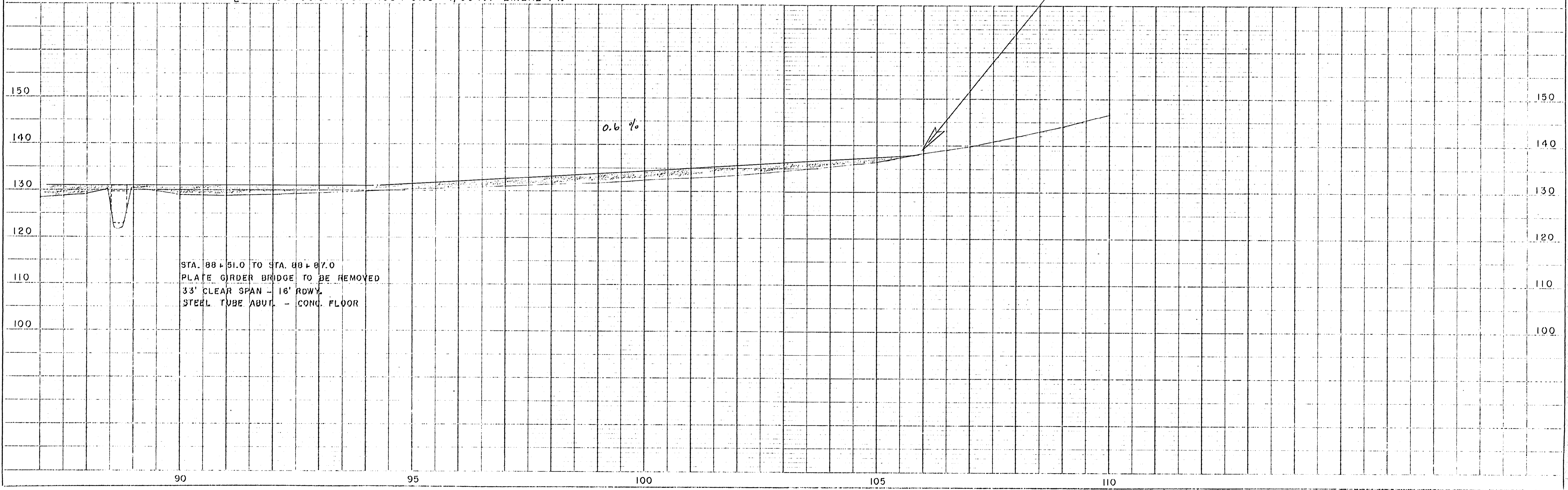
SE-NE - OTTO STOCKHEIMER - NE-NE

SEC
 27
 T 26 N
 R 4 E

SW-NW - GEORGE GULDAN - NW-NW

END OF PROJECT
 STA. 105 + 91.5 = NW COR. OF SEC. 27

NET LENGTH OF C. STA. 88 + 96.8 TO STA. 105 + 91.5 = 1,694.7 LINEAL FT.



STA. 88 + 51.0 TO STA. 88 + 87.0
 PLATE GIRDER BRIDGE TO BE REMOVED
 33' CLEAR SPAN - 16' ROWY.
 STEEL TUBE ABUT. - CONC. FLOOR

PLAN
 SURVEYED
 PLOTTED
 ASSEMBLY CHECKED
 BY C. E. C.
 DATE 12-55

PROFILE
 SURVEYED
 PLOTTED
 GRADES CHECKED
 BY C. E. C.
 DATE 12-55