

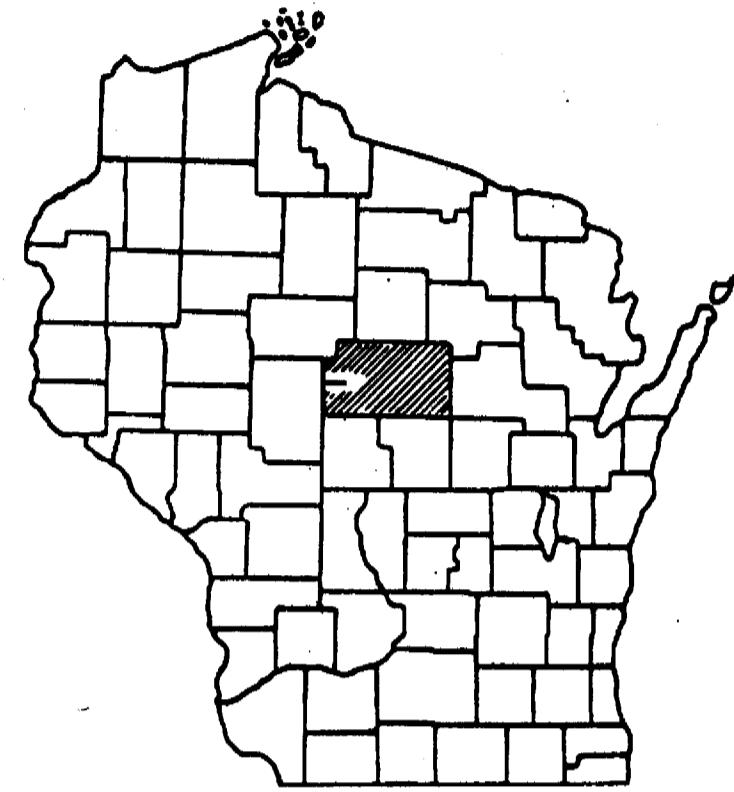
INDEX OF SHEETS

SHEET NO. 1	TITLE
SHEET NO.	TYPICAL CROSS SECTIONS
SHEET NO.	ESTIMATE OF QUANTITIES
SHEET NO.	MISCELLANEOUS QUANTITIES
SHEET NO.	RIGHT OF WAY PLAT
SHEET NO.	PLAN AND PROFILE STA. TO STA.
SHEET NO.	STANDARD DETAILS
SHEET NO.	DRAINAGE STRUCTURES
SHEET NO.	CROSS SECTIONS

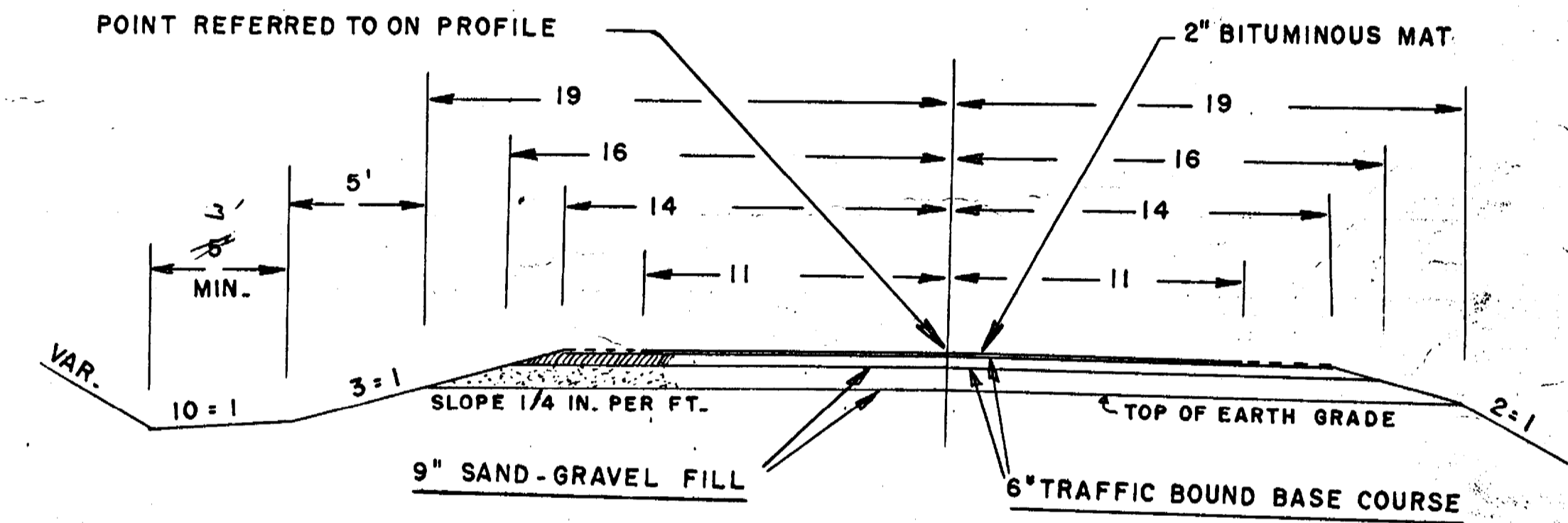
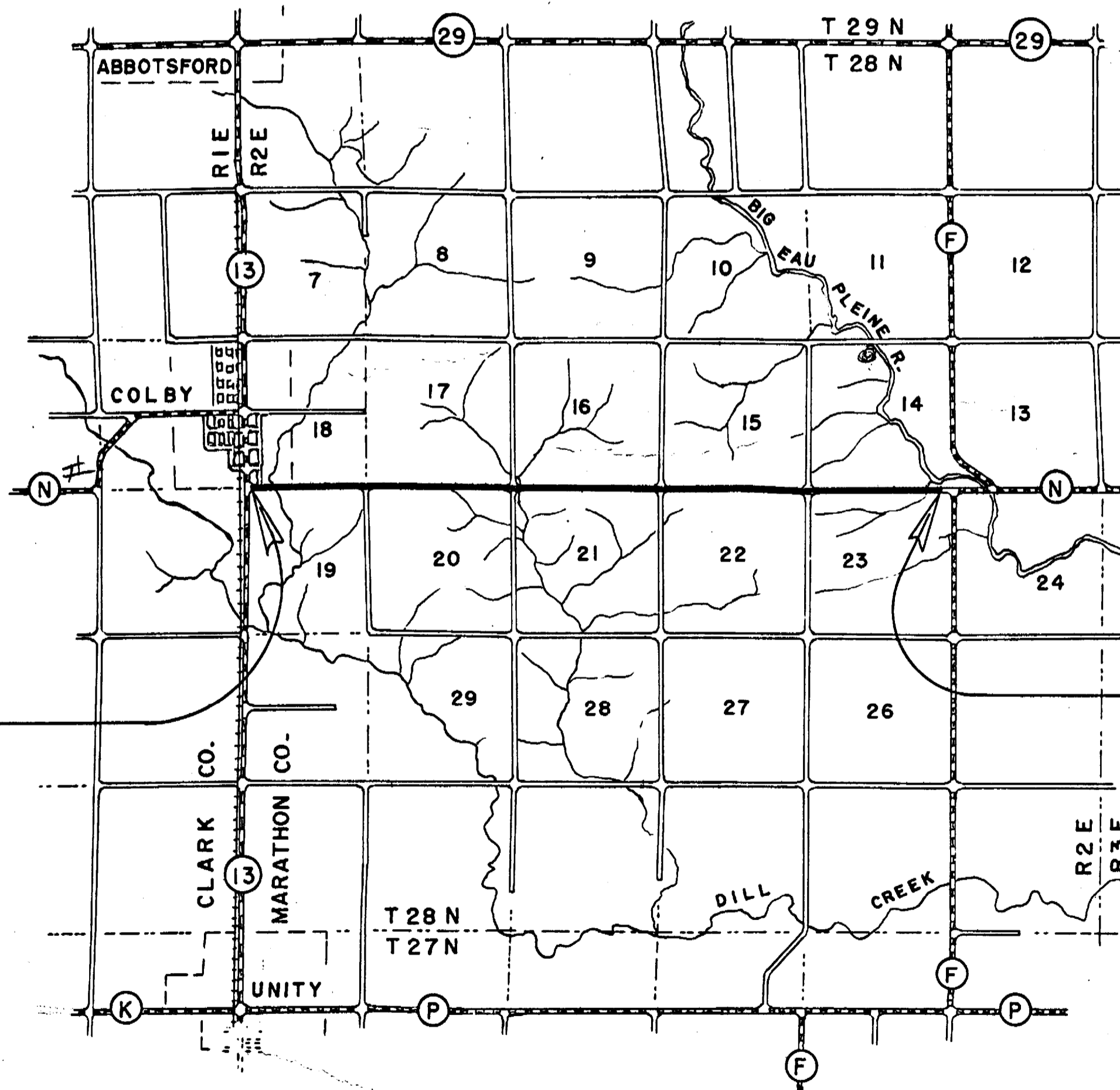
COUNTY AND HIGHWAY	ROUTE AND SECTION	CLASS AND AGREEMENT		FEDERAL DIVISION OFFICE	SHEET NUMBER	TOTAL SHEETS
		STATE	FEDERAL			
				WIS. 4		

STATE OF WISCONSIN
STATE HIGHWAY COMMISSION OF WISCONSIN

PLAN AND PROFILE OF PROPOSED



SCALES
 PLAN 1 IN. = 100 FT.
 PROFILE HOR. 1 IN. = 100 FT. VERT. 1 IN. = 10 FT.
 CROSS SECTIONS HOR. 1 IN. = 5 FT. VERT. 1 IN. = 5 FT.



BEGINNING OF PROJECT
 STA. 0 + 33.0 = 33.0' E. OF C-L OF S.T.H. "13"
 = 1,521.0' W. OF NE COR. OF FR. NW OF SEC. 19

END OF PROJECT
 STA. 248 + 70.4 = 300' W. OF NE COR. OF SEC. 23
 = BEGINNING OF PROJECT S 021 11

CONVENTIONAL SIGNS

STATE LINE.....	CULVERTS IN PLACE.....
COUNTY LINE.....	CULVERTS REQUIRED.....
TOWNSHIP OR RANGE LINE.....	DROP INLET.....
SECTION LINE.....	POWER POLE.....
NEW RIGHT OF WAY LINE.....	TELEPHONE OR TELEGRAPH POLE.....
PRESENT RIGHT OF WAY LINE.....	RIGHT OF WAY MARKERS.....
WIRE FENCE { WOVEN.....	REFERENCE STAKE FOR HUBS ONLY.....
{ BARBED.....	MARSH.....
LOT LINE.....	HEDGE.....
CORPORATE OR CITY LIMITS.....	TREES.....
PROPERTY LINE.....	GROUND ELEVATION..... DATUM LINE
TRAVELED WAY OR P.E.....	GRADE ELEVATION..... DATUM LINE
RAILROADS.....	
BASE OR SURVEY LINE.....	

LAYOUT

SCALE ONE MILE

TOTAL NET LENGTH OF CENTERLINE = 4.704 MI.

STATE HIGHWAY COMMISSION OF WISCONSIN
MADISON, WISCONSIN

SURVEYOR C. E. C. NOTE BOOK M-76
 DISTRICT COMPUTER M. O. CHECKER
 DISTRICT CHECKER CORRECT

CORRECT:
 DATE _____ DISTRICT ENGINEER

RECOMMENDED FOR APPROVAL:
 DATE _____ ENGINEER OF DESIGN

APPROVED:
 DATE _____ STATE HIGHWAY ENGINEER

DEPARTMENT OF COMMERCE
 BUREAU OF PUBLIC ROADS

APPROVED: _____ DATE _____

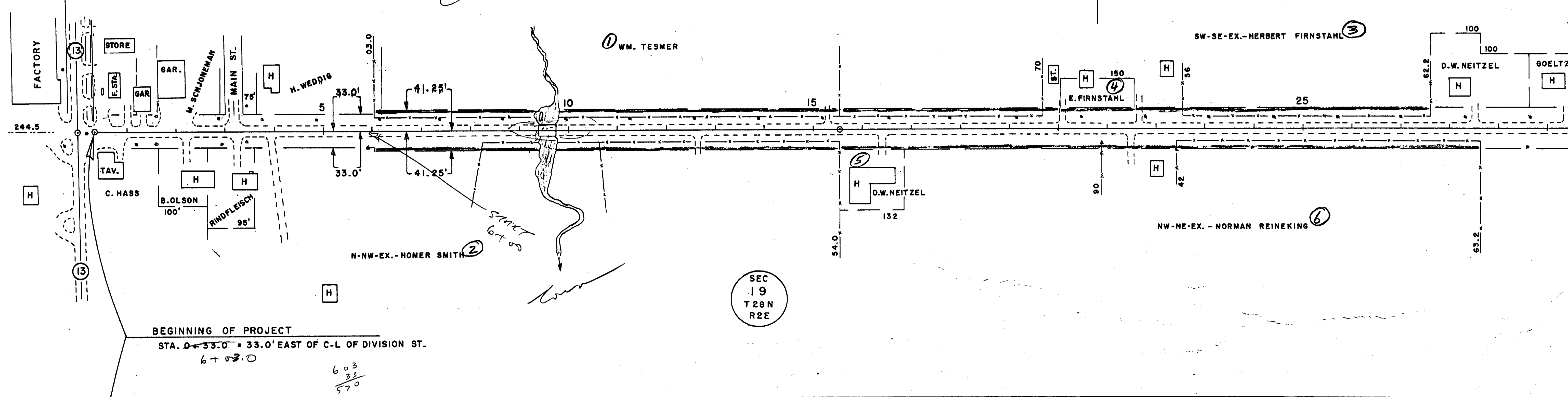
BENCH MARKS			
1	1+60	SPIKE IN POW. POLE	33'L 339.65
2	9+74	TOP SE WING	14'R 331.72
3	22+34	SPIKE IN 12" BOX ELDER	46'R 348.40

91°12'
 P.I. IRON = C-L S.T.H. '13"
 P.O.T. IRON 32.1' EAST
 41.4 TO BLDG. SSE
 33.0 TO PIPE SOUTH
 32.6 TO POW. POLE NNW
 27.9 TO STOP SIGN NNW

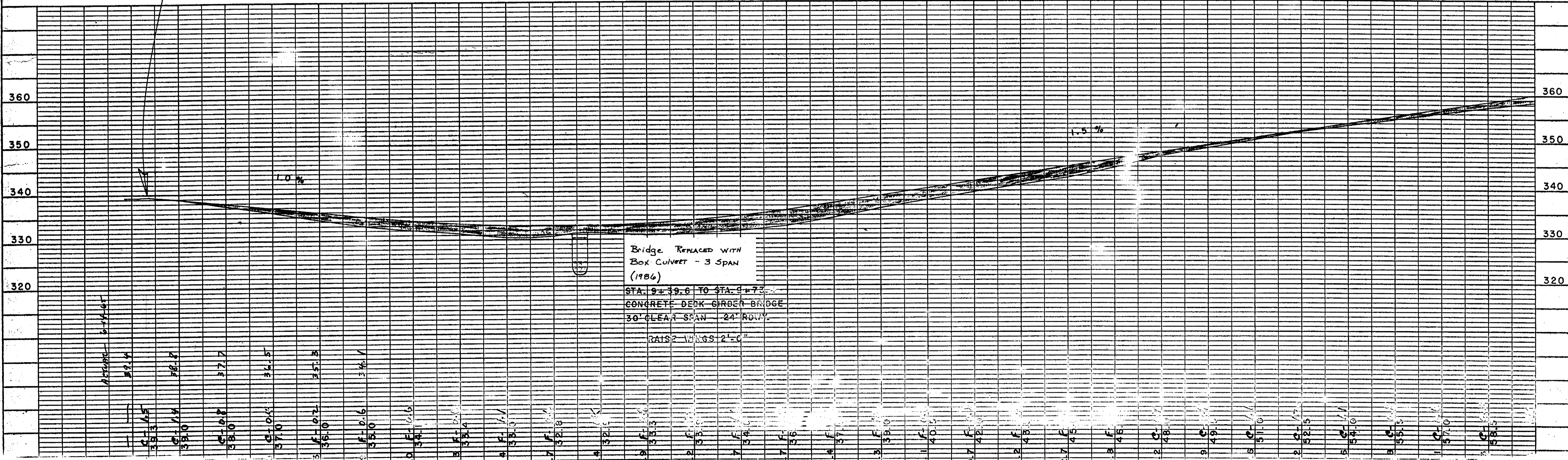
179°44'30"
 CORNERSTONE
 41.25' TO IRON N. & S.
 82.7 TO BLDG. SSE

SEC 18
 T28N
 3E

SEC 19
 T28N
 R2E



BEGINNING OF PROJECT
 STA. 0+33.0 = 33.0' EAST OF C-L OF DIVISION ST.
 6+03.0



Bridge REPLACED WITH
 BOX CULVERT - 3 SPAN
 (1986)
 STA. 9+39.6 TO STA. 9+73.0
 CONCRETE DECK GIRDER BRIDGE
 30' CLEAR SPAN - 24' ROW
 RAISE WINGS 2'-0"

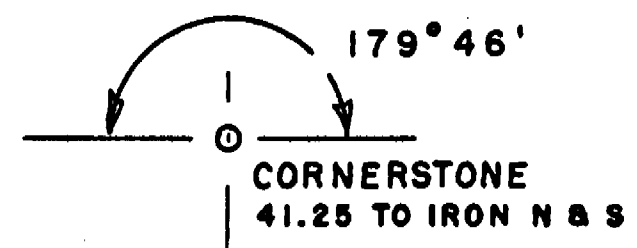
REMARKS
 89.4
 39.3
 38.8
 37.7
 36.5
 35.3
 34.1
 33.4
 33.0
 32.8
 32.5
 31.3
 30.8
 30.4
 29.7
 29.6
 29.1
 28.7
 28.5
 28.0
 27.7
 27.0
 26.5

C. T. H. "N"

BENCH MARKS				
5	51+89	SPIKE IN 10" MAPLE	50' L	372.90
6	77+13	" " POWER POLE	40' R	353.26
7	89+07	" " 38" WILLOW	48' L	343.64

SEC
17
T28N
R2E

SEC
20
T28N
R2E

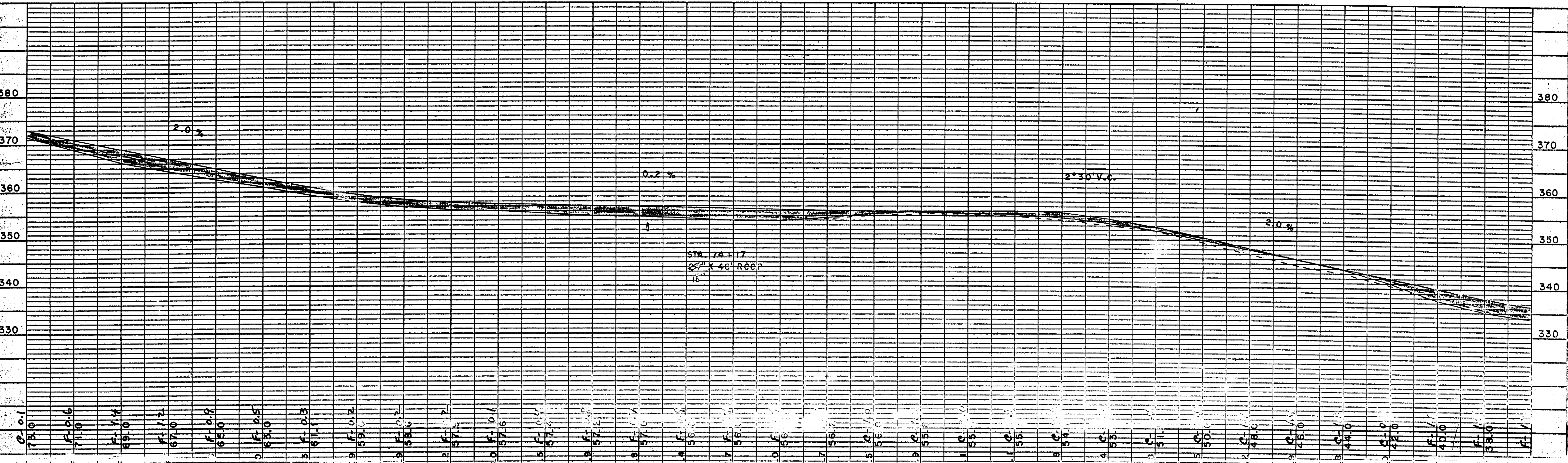
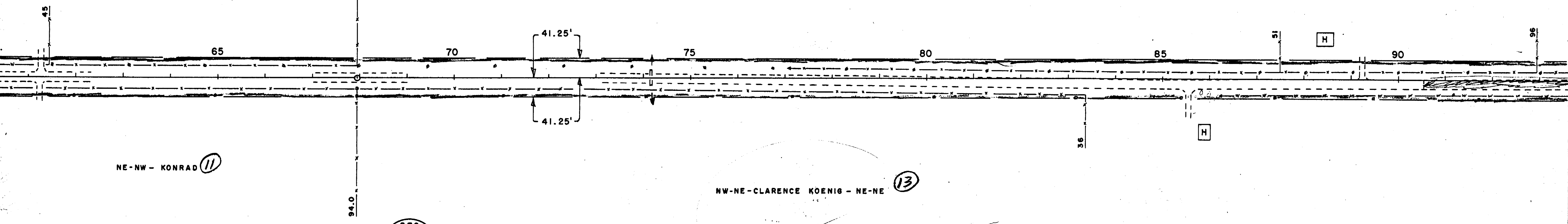


SE-SW - KONRAD (11)

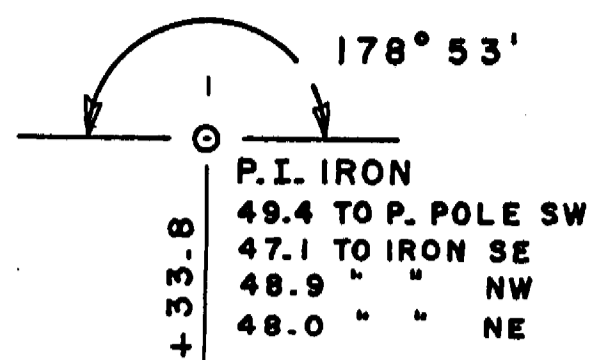
(12) SW-SE - ARNOLD ASPLUND - SE-SE

NE-NW - KONRAD (11)

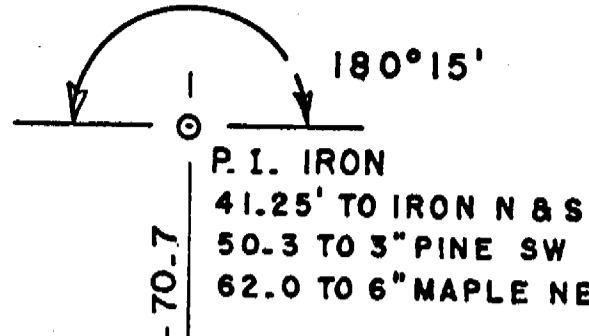
NW-NE - CLARENCE KOENIG - NE-NE (13)



8	95+82	TOP SE WING BRIDGE		334.90
9	101+00	SPIKE IN 12" MAPLE	35' L	336.26
10	118+84	" " 12" LOCUST	47' R	349.16



SEC 16
T 28 N
R 2 E



SW-SW - ELMER KOCIAN (14)

SE-SW - LESTER SONNEMANN (15)

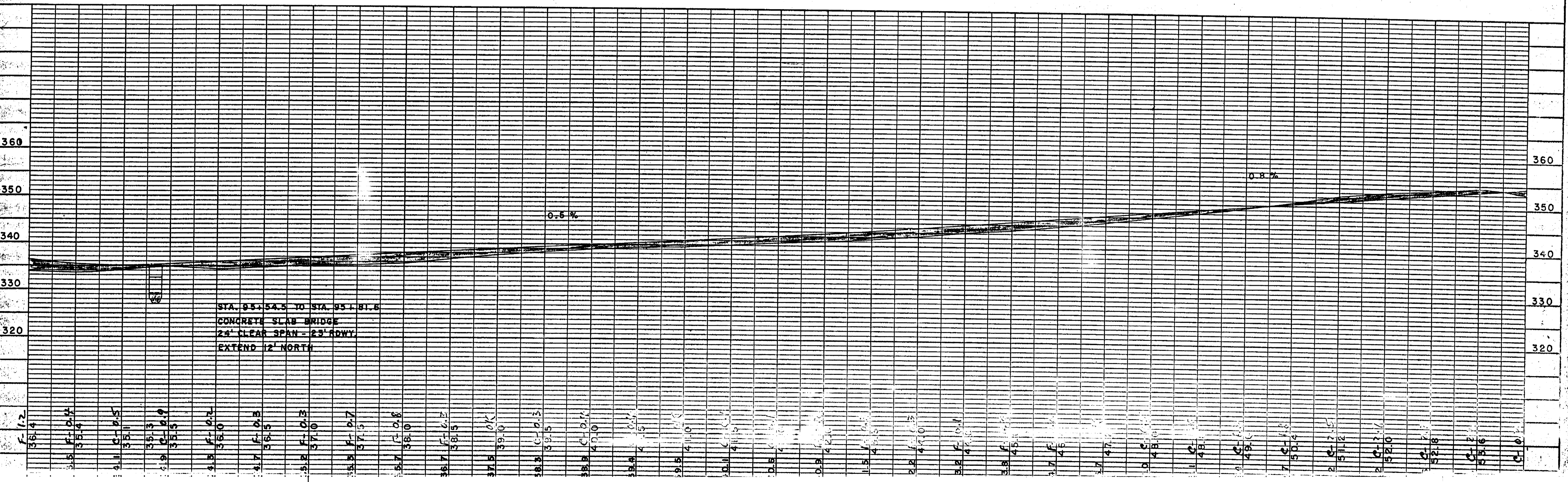
38 R - ELMER WUSSOW

NW-NW - J. B. KOCIAN

NE-NW - WALTER DREW

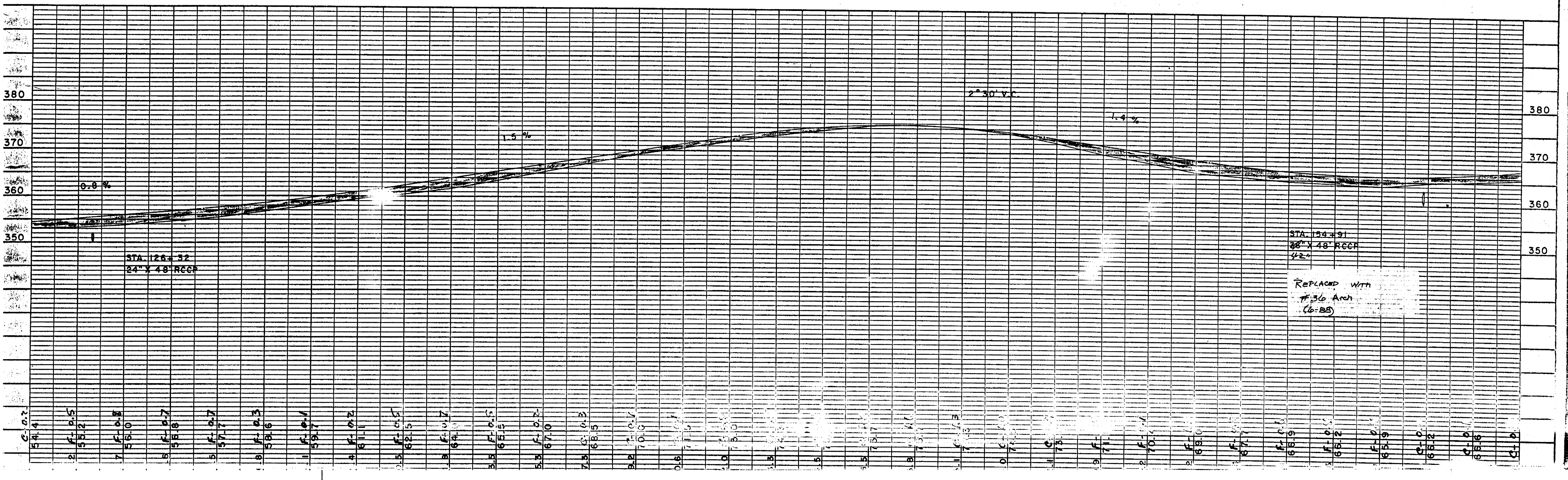
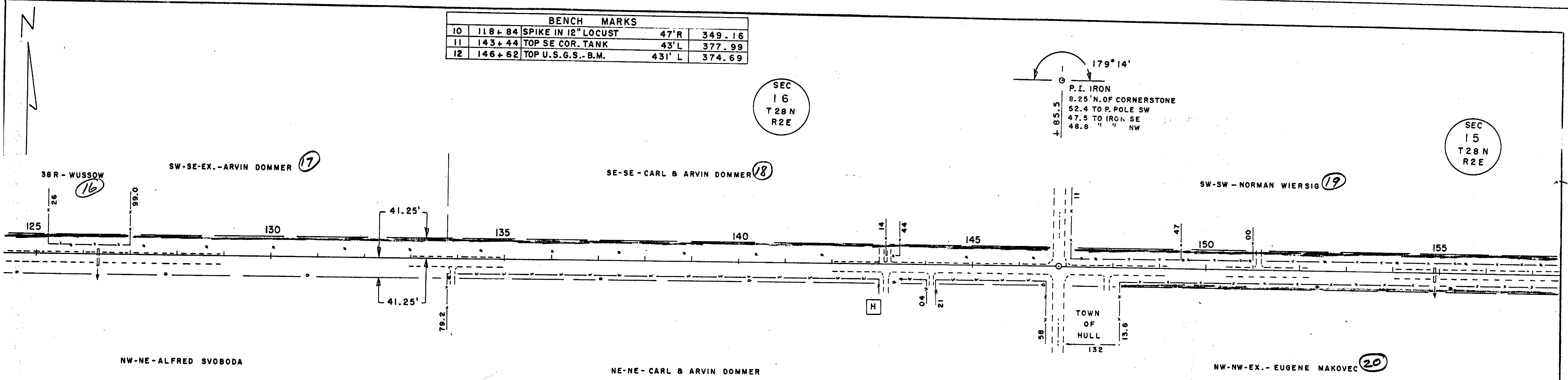
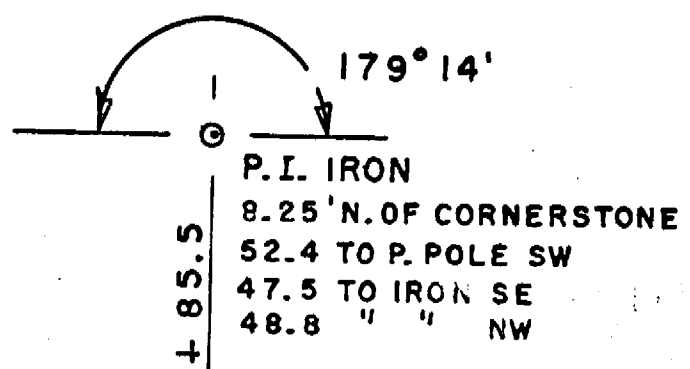
NW-NE - ALFRED SVOBODA

SEC 21
T 28 N
R 2 E



36.4	F-12
35.4	F-04
35.1	C-05
35.3	C-09
35.5	C-09
36.0	F-02
36.5	F-05
37.0	F-03
37.5	F-07
38.0	F-08
38.5	F-02
39.0	F-01
39.5	C-01
40.0	C-01
40.5	C-01
41.0	C-01
41.5	C-01
42.0	C-01
42.5	C-01
43.0	C-01
43.5	C-01
44.0	C-01
44.5	C-01
45.0	C-01
45.5	C-01
46.0	C-01
46.5	C-01
47.0	C-01
47.5	C-01
48.0	C-01
48.5	C-01
49.0	C-01
49.5	C-01
50.0	C-01
50.5	C-01
51.0	C-01
51.5	C-01
52.0	C-01
52.5	C-01
53.0	C-01
53.5	C-01
54.0	C-01
54.5	C-01
55.0	C-01
55.5	C-01
56.0	C-01
56.5	C-01
57.0	C-01
57.5	C-01
58.0	C-01
58.5	C-01
59.0	C-01
59.5	C-01
60.0	C-01
60.5	C-01
61.0	C-01
61.5	C-01
62.0	C-01
62.5	C-01
63.0	C-01
63.5	C-01
64.0	C-01
64.5	C-01
65.0	C-01
65.5	C-01
66.0	C-01
66.5	C-01
67.0	C-01
67.5	C-01
68.0	C-01
68.5	C-01
69.0	C-01
69.5	C-01
70.0	C-01
70.5	C-01
71.0	C-01
71.5	C-01
72.0	C-01
72.5	C-01
73.0	C-01
73.5	C-01
74.0	C-01
74.5	C-01
75.0	C-01
75.5	C-01
76.0	C-01
76.5	C-01
77.0	C-01
77.5	C-01
78.0	C-01
78.5	C-01
79.0	C-01
79.5	C-01
80.0	C-01
80.5	C-01
81.0	C-01
81.5	C-01
82.0	C-01
82.5	C-01
83.0	C-01
83.5	C-01
84.0	C-01
84.5	C-01
85.0	C-01
85.5	C-01
86.0	C-01
86.5	C-01
87.0	C-01
87.5	C-01
88.0	C-01
88.5	C-01
89.0	C-01
89.5	C-01
90.0	C-01
90.5	C-01
91.0	C-01
91.5	C-01
92.0	C-01
92.5	C-01
93.0	C-01
93.5	C-01
94.0	C-01
94.5	C-01
95.0	C-01
95.5	C-01
96.0	C-01
96.5	C-01
97.0	C-01
97.5	C-01
98.0	C-01
98.5	C-01
99.0	C-01
99.5	C-01
100.0	C-01
100.5	C-01
101.0	C-01
101.5	C-01
102.0	C-01
102.5	C-01
103.0	C-01
103.5	C-01
104.0	C-01
104.5	C-01
105.0	C-01
105.5	C-01
106.0	C-01
106.5	C-01
107.0	C-01
107.5	C-01
108.0	C-01
108.5	C-01
109.0	C-01
109.5	C-01
110.0	C-01
110.5	C-01
111.0	C-01
111.5	C-01
112.0	C-01
112.5	C-01
113.0	C-01
113.5	C-01
114.0	C-01
114.5	C-01
115.0	C-01
115.5	C-01
116.0	C-01
116.5	C-01
117.0	C-01
117.5	C-01
118.0	C-01
118.5	C-01
119.0	C-01
119.5	C-01
120.0	C-01
120.5	C-01
121.0	C-01
121.5	C-01
122.0	C-01
122.5	C-01
123.0	C-01
123.5	C-01
124.0	C-01
124.5	C-01
125.0	C-01
125.5	C-01
126.0	C-01

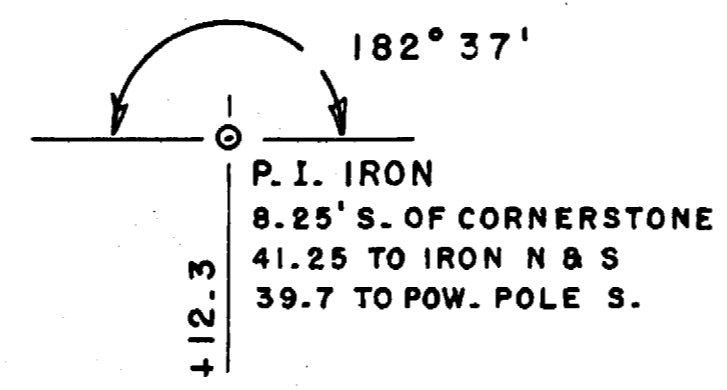
BENCH MARKS				
10	118+84	SPIKE IN 12" LOCUST	47'R	349.16
11	143+44	TOP SE COR. TANK	43'L	377.99
12	146+62	TOP U.S.G.S.-B.M.	431'L	374.69



BENCH MARKS				
13	168+91	SPIKE IN 15" MAPLE	56' L	389.75
14	173+12	" " POW. POLE	40' R	400.56
15	183+75	TOP C. & GEO. B. M.	50' L	406.74



SEC
15
T 28N
R 2E



SW-SW - NORMAN WIERSIG - SE-SW (19)

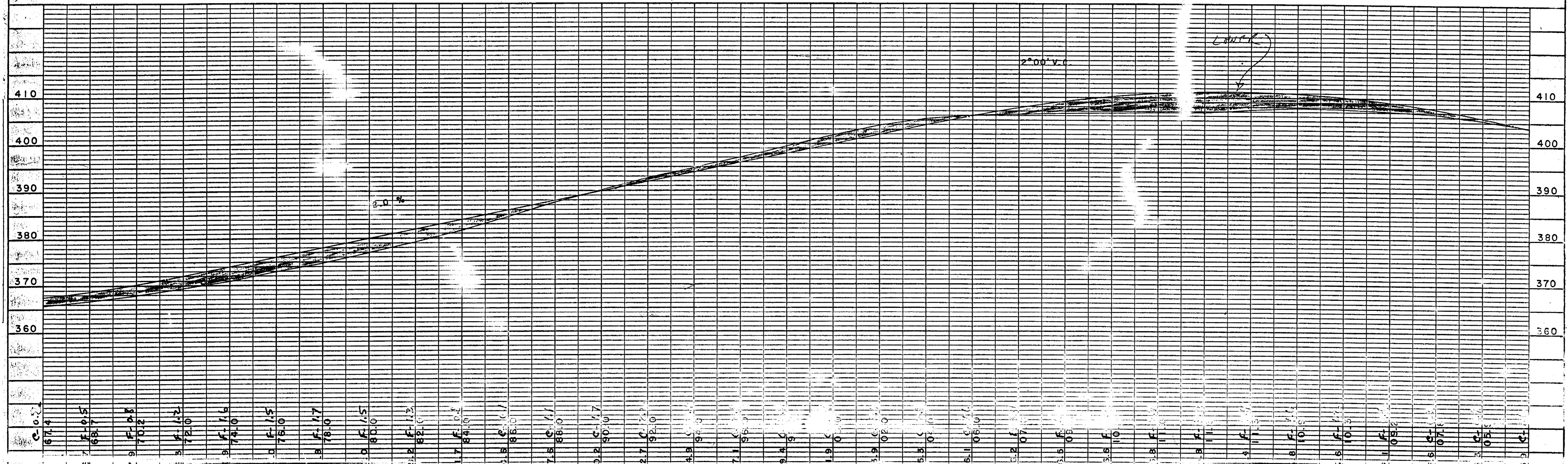
SW-SE - HAROLD WIERSIG (21)

SE-SE - MILLER (23)

NW-NW-EX. - EUGENE MAKOVEC - NE-NW-EX. (20)

E. I ROD NE-NW - WILBER BECKER - NW-NE (22)

SEC
22
T 28N
R 2E



BENCH MARKS				
16	198+17	SPIKE IN POW. POLE	40'R	383.80
17	212+70	" " " "	39'L	374.95

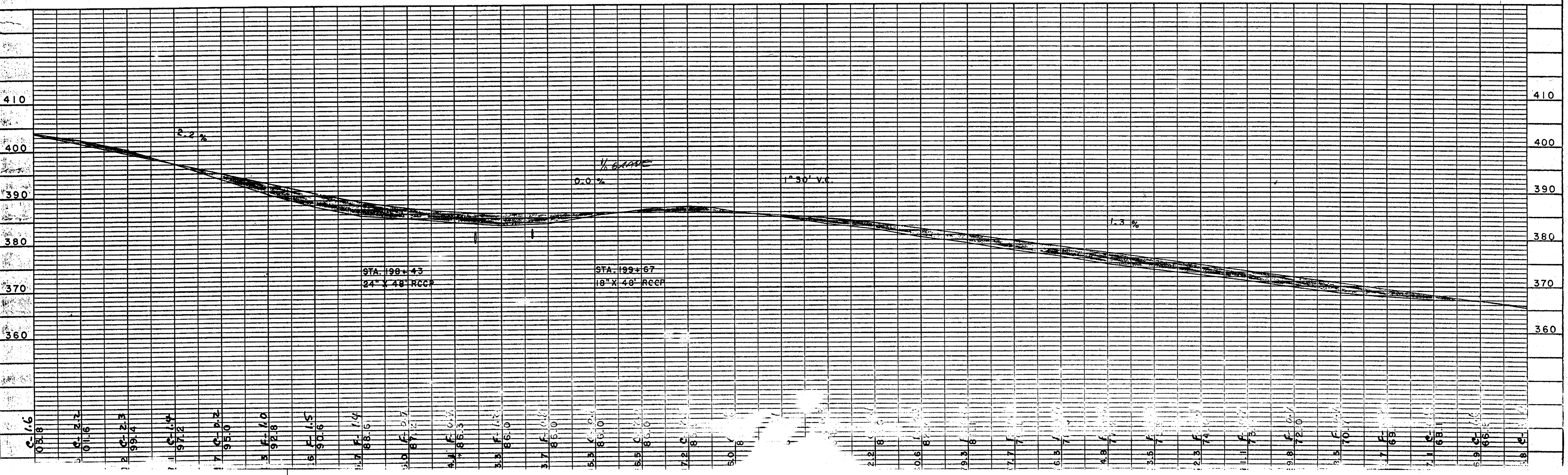
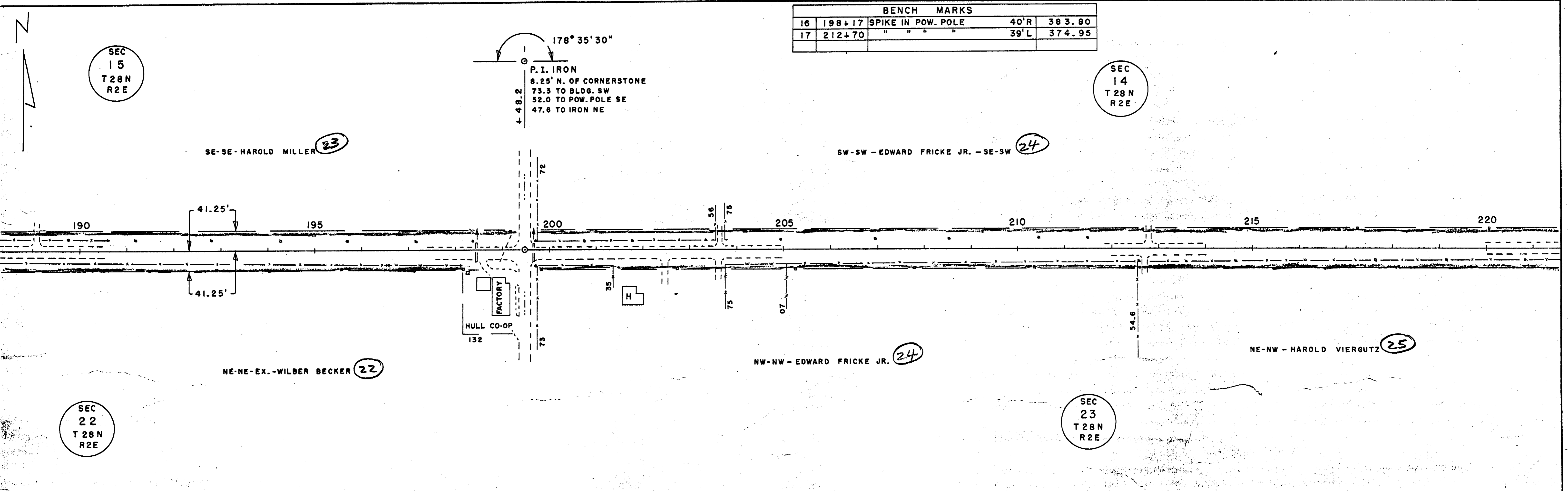


SEC 15
T 28 N
R 2 E

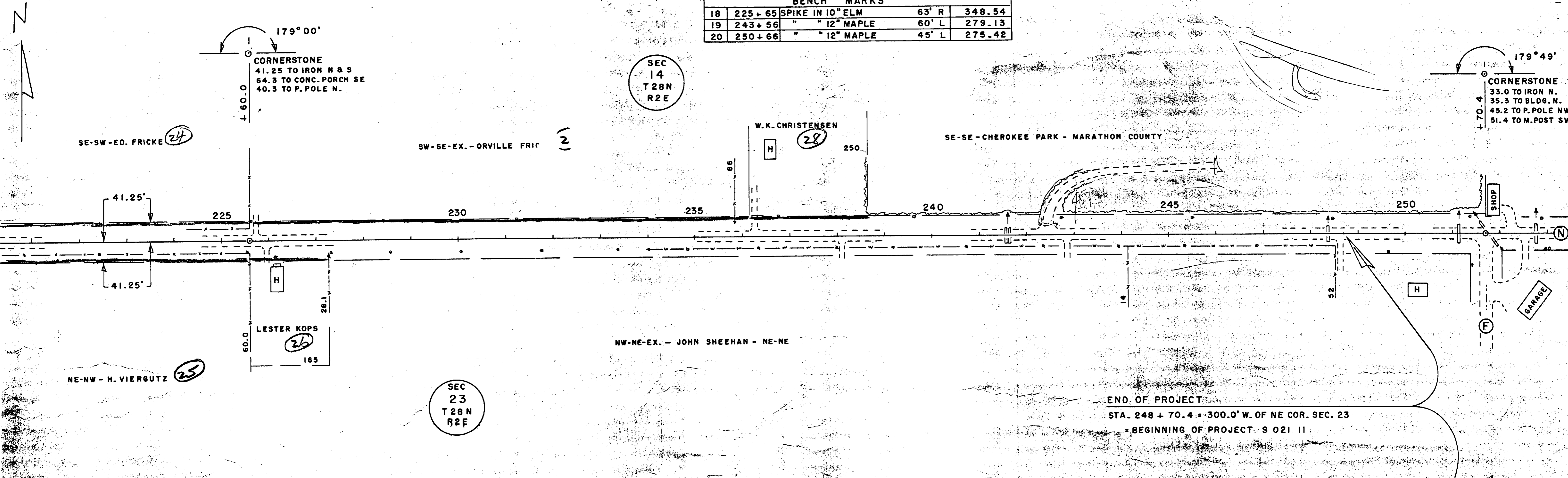
SEC 14
T 28 N
R 2 E

SEC 22
T 28 N
R 2 E

SEC 23
T 28 N
R 2 E



BENCH MARKS				
18	225+65	SPIKE IN 10" ELM	63' R	348.54
19	243+56	" " 12" MAPLE	60' L	279.13
20	250+66	" " 12" MAPLE	45' L	275.42



TOTAL NET LENGTH OF C-L = 24,837.4 LINEAR FT. = 4.704 MILES

