

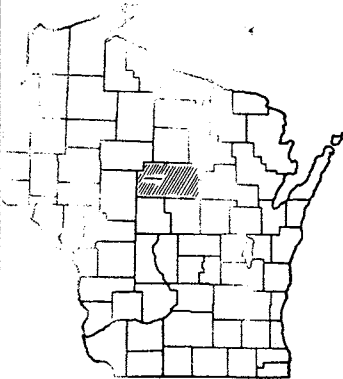
INDEX OF SHEETS

SHEET NO. 1	TITLE
SHEET NO. 1	TYPICAL CROSS SECTIONS
SHEET NO. 1	ESTIMATE OF QUANTITIES
SHEET NO. -	MISCELLANEOUS QUANTITIES
SHEET NO. -	RIGHT OF WAY PLAT
SHEET NO. 2-7	PLAN AND PROFILE STA. 0+00 TO STA. 308+97.2
SHEET NO. -	STANDARD DETAILS
SHEET NO. -	DRAINAGE STRUCTURES
SHEET NO. -	CROSS SECTIONS

STATE OF WISCONSIN
STATE HIGHWAY COMMISSION OF WISCONSIN

COUNTY AND HIGHWAY	ROUTE AND SECTION	CLASS AND AGREEMENT		FEDERAL DIVISION OFFICE	SHEET NUMBER	TOTAL SHEETS
37.6	21.0	STATE	FEDERAL	WIS. 5N	1	7

PLAN AND PROFILE OF PROPOSED
C.T.H. "F" - S.T.H. 97
MARATHON COUNTY
PROJECT S 021 (6)

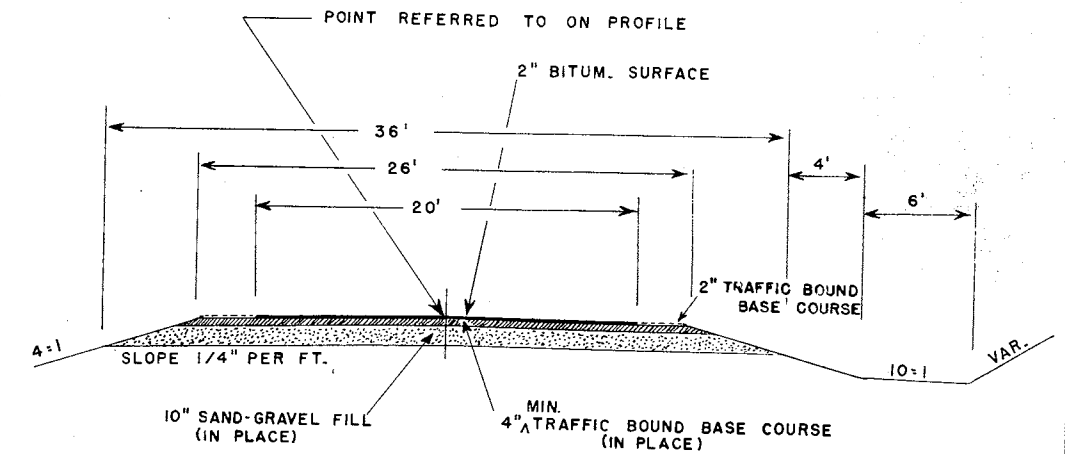


CONTRACT NO. 1

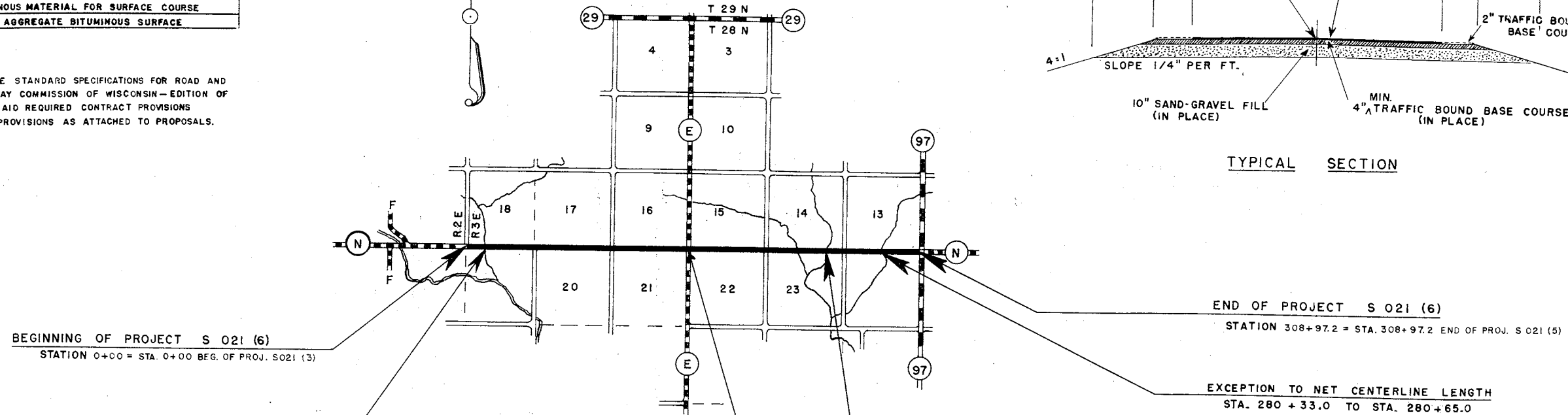
ESTIMATE OF QUANTITIES			
ITEM NO.	QUANTITY	UNIT	ITEM
2204-1	2025	CU. YD.	TRAFFIC BOUND BASE COURSE
2310-1	307	STA.	PREPARATION OF ROADBED FOR BITUMINOUS SURFACING
2311-1	19000	GAL.	BITUMINOUS MATERIAL FOR PRIME COAT
2314-1	108000	GAL.	BITUMINOUS MATERIAL FOR SURFACE COURSE
2315-1	5400	CU. YD.	SINGLE AGGREGATE BITUMINOUS SURFACE

THIS PROJECT IS TO BE EXECUTED UNDER THE STANDARD SPECIFICATIONS FOR ROAD AND BRIDGE CONSTRUCTION OF THE STATE HIGHWAY COMMISSION OF WISCONSIN - EDITION OF 1951. APPROVED JANUARY 23, 1952 FEDERAL AID REQUIRED CONTRACT PROVISIONS APPROVED NOVEMBER 8, 1948, AND SPECIAL PROVISIONS AS ATTACHED TO PROPOSALS.

PLAN 1 IN. = 100 FT.
PROFILE HOR. 1 IN. = 100 FT. VERT. 1 IN. = 10 FT.
CROSS SECTIONS HOR. 1 IN. = FT. VERT. 1 IN. = FT.



TYPICAL SECTION



CONVENTIONAL SIGNS

PROPERTY LINE	CONVERTS IN PLACE
SHIP OR RANGE LINE	CONVERTS REQUIRED
RIGHT OF WAY LINE	DROP INLET
RIGHT OF WAY LINE	POWER POLE
RIGHT OF WAY LINE	TELEPHONE OR TELEGRAPH POLE
RIGHT OF WAY LINE	RIGHT OF WAY MARKERS
REFERENCE { WOVEN	REFERENCE STAKE FOR HUBS ONLY
REFERENCE { BARBED	REFERENCE STAKE FOR HUBS ONLY
PROPERTY LINE	MEASURE
PROPERTY LINE	TREES
PROPERTY LINE	GROUND ELEVATION
PROPERTY LINE	GRADE ELEVATION

LAYOUT

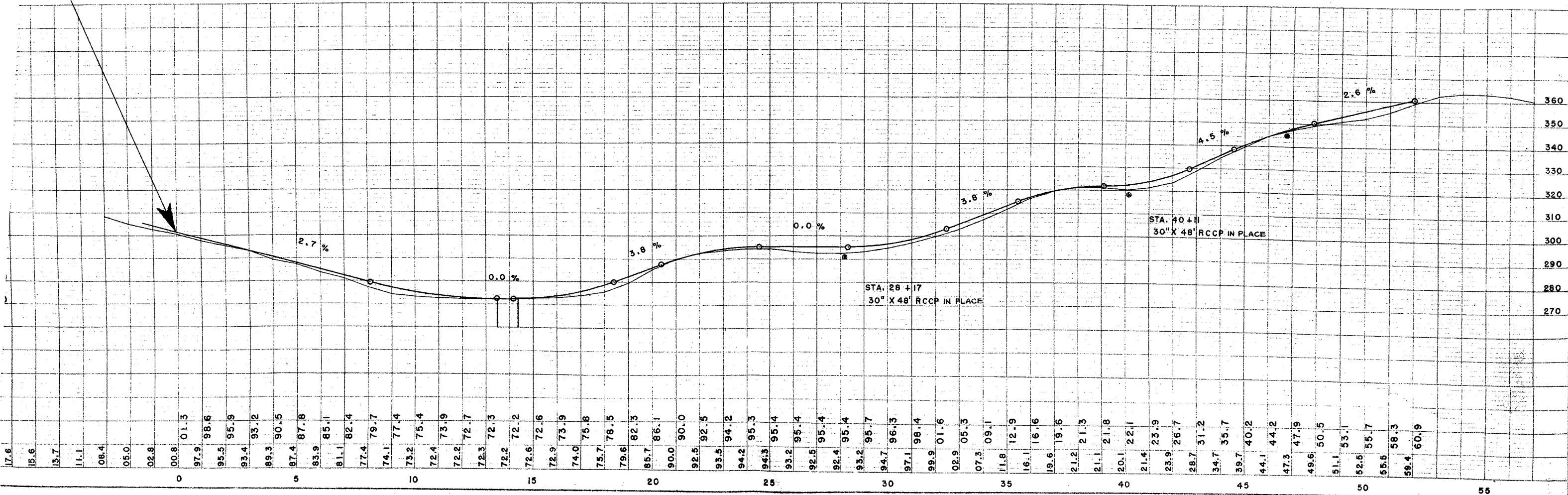
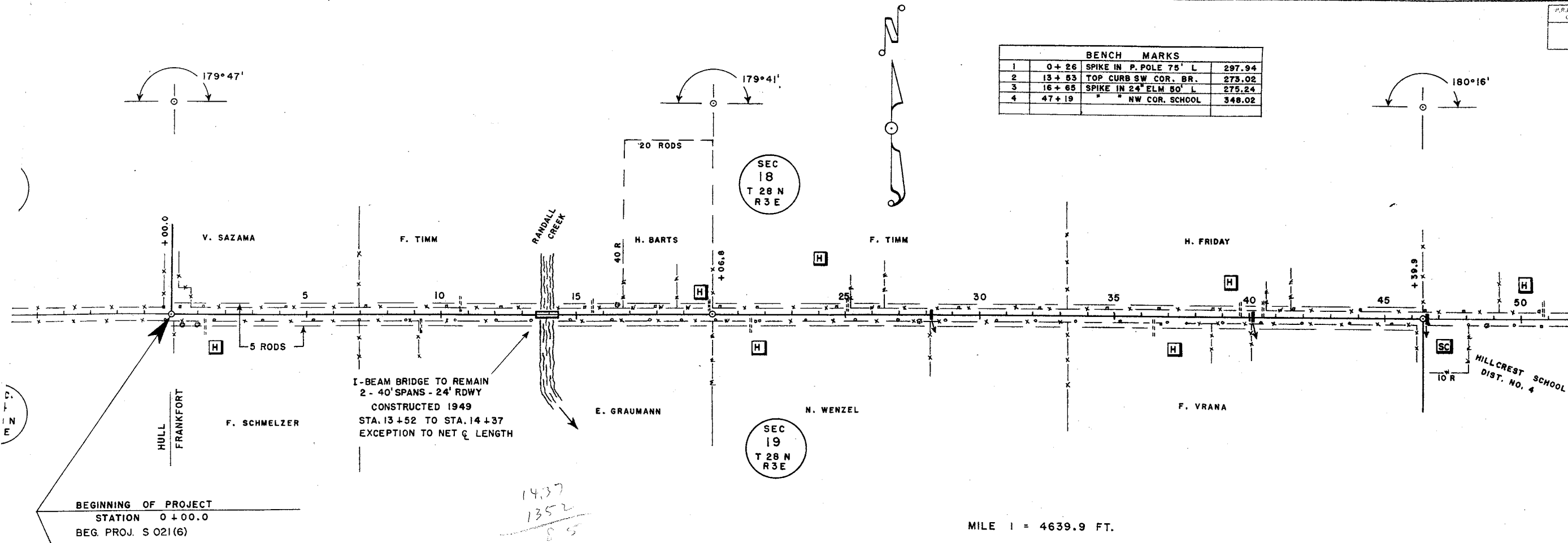
SCALE 1 MILE

TOTAL NET LENGTH OF CENTERLINE = 5.812 MI.

STATE HIGHWAY COMMISSION OF WISCONSIN MADISON, WIS.		DEPARTMENT OF COMMERCE BUREAU OF PUBLIC ROADS	
SURVEYOR: C.E.C.	NOTE BOOK	RECOMMENDED FOR APPROVAL:	
DIVISION COMPUTER: C.E.C.	M.O. CHECKER	DISTRICT ENGINEER	DATE
DIVISION CHECKER: CORRECT	CORRECT	APPROVED:	
CORRECT:	DATE: 3-3-53	DATE	
RECOMMENDED FOR APPROVAL:	DATE: 3-3-53	DATE	
APPROVED:	DATE: 3-3-53	DATE	

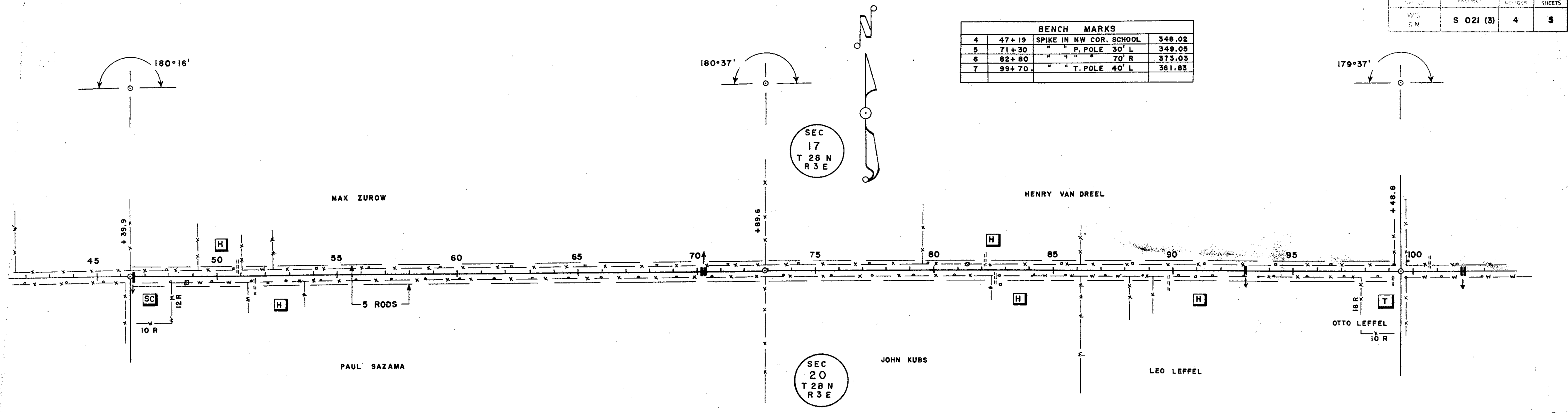
P.R.A. DISTRICT OFFICE	PROJECT	SHEET NUMBER	TOTAL SHEETS
WIS. S N	S 021 (3)	3	5

BENCH MARKS		
1	0+26 SPIKE IN P. POLE 75' L	297.94
2	13+83 TOP CURB SW COR. BR.	273.02
3	16+65 SPIKE IN 24" ELM 50' L	275.24
4	47+19 " " NW COR. SCHOOL	348.02

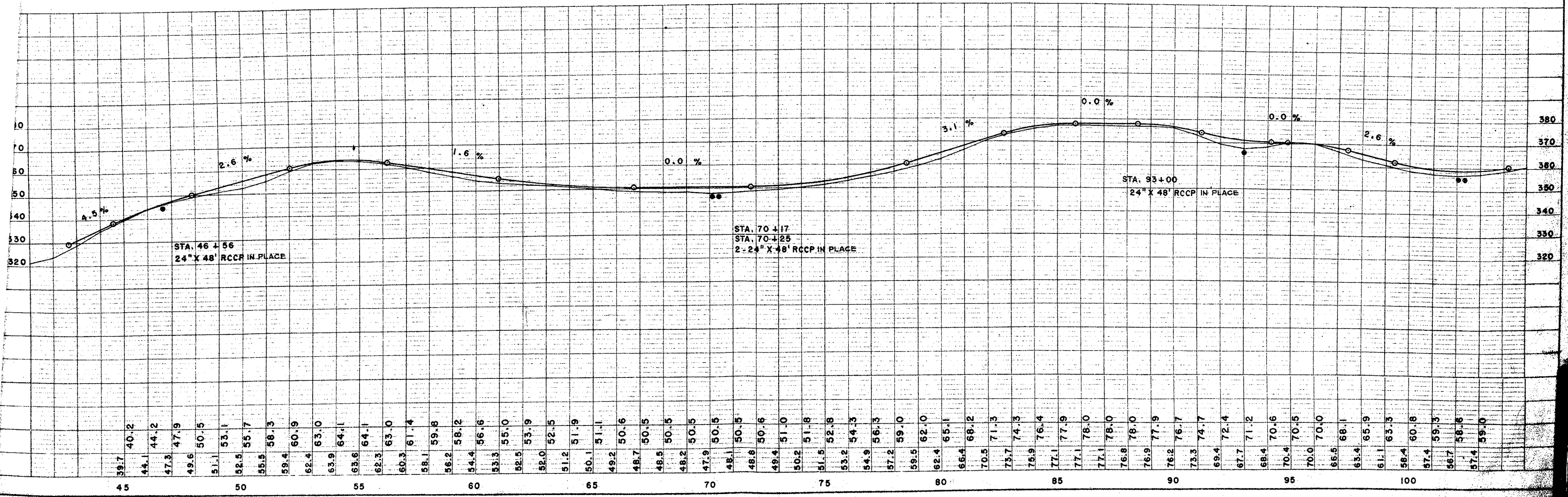


PROJ. NO.	SHEET NO.	TOTAL SHEETS
S 021 (3)	4	8

BENCH MARKS			
4	47+19	SPIKE IN NW COR. SCHOOL	348.02
5	71+30	" " P. POLE 30' L	349.06
6	82+80	" " " " 70' R	373.03
7	99+70	" " T. POLE 40' L	361.83

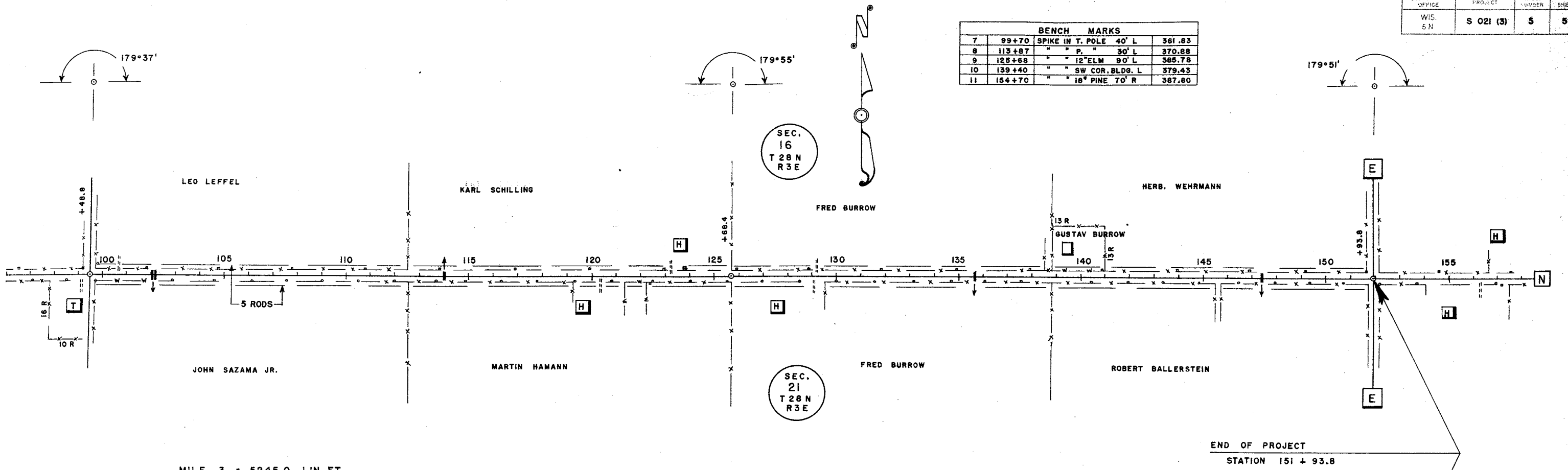


MILE 2 = 5308.9 FT.



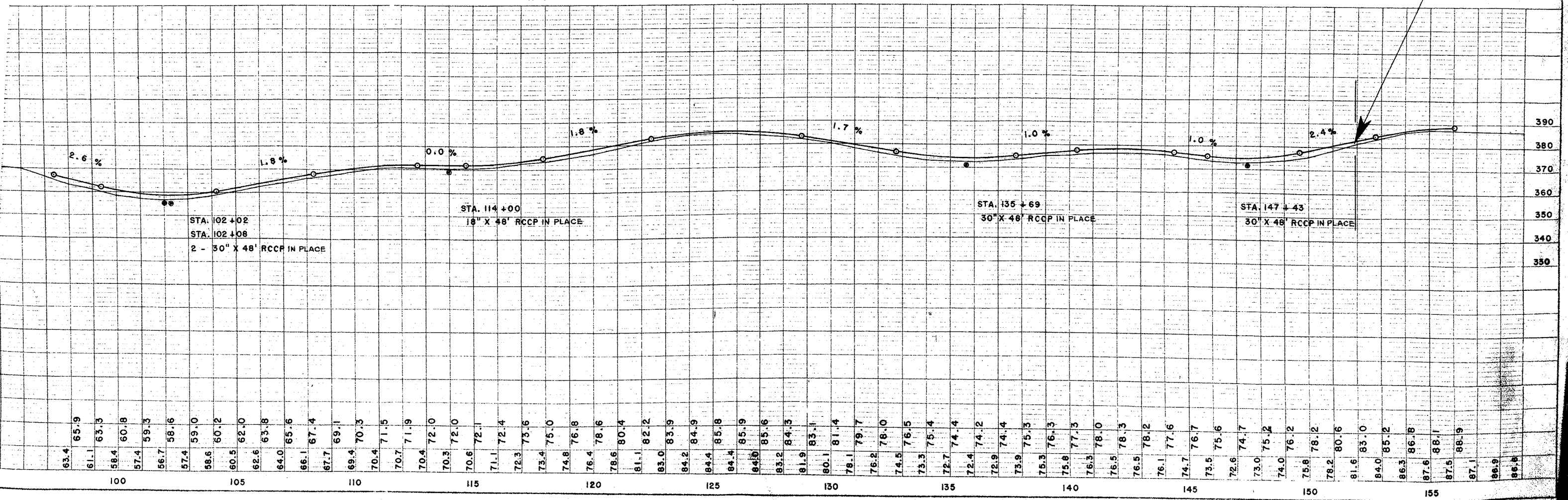
P.R.A. DISTRICT OFFICE	PROJECT	SHEET NUMBER	TOTAL SHEETS
WIS. 5 N	S 021 (3)	5	5

BENCH MARKS			
7	99+70	SPIKE IN T. POLE 40' L	361.83
8	115+87	" " P. " 30' L	370.88
9	125+68	" " 12" ELM 90' L	385.78
10	139+40	" " SW COR. BLDG. L	379.43
11	154+70	" " 18" PINE 70' R	387.80

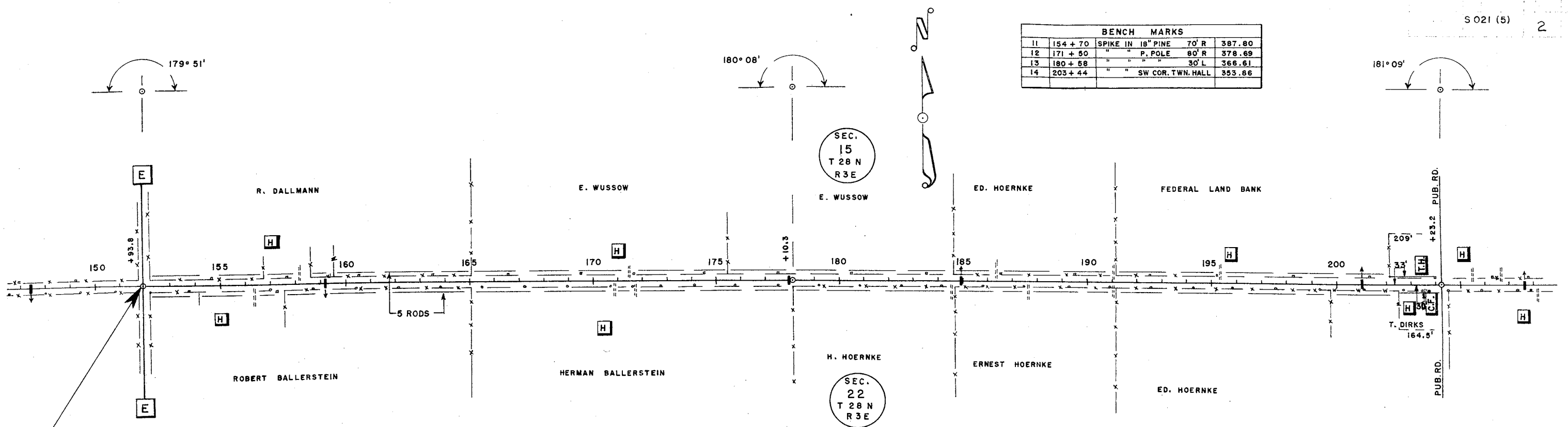


MILE 3 = 5245.0 LIN. FT.

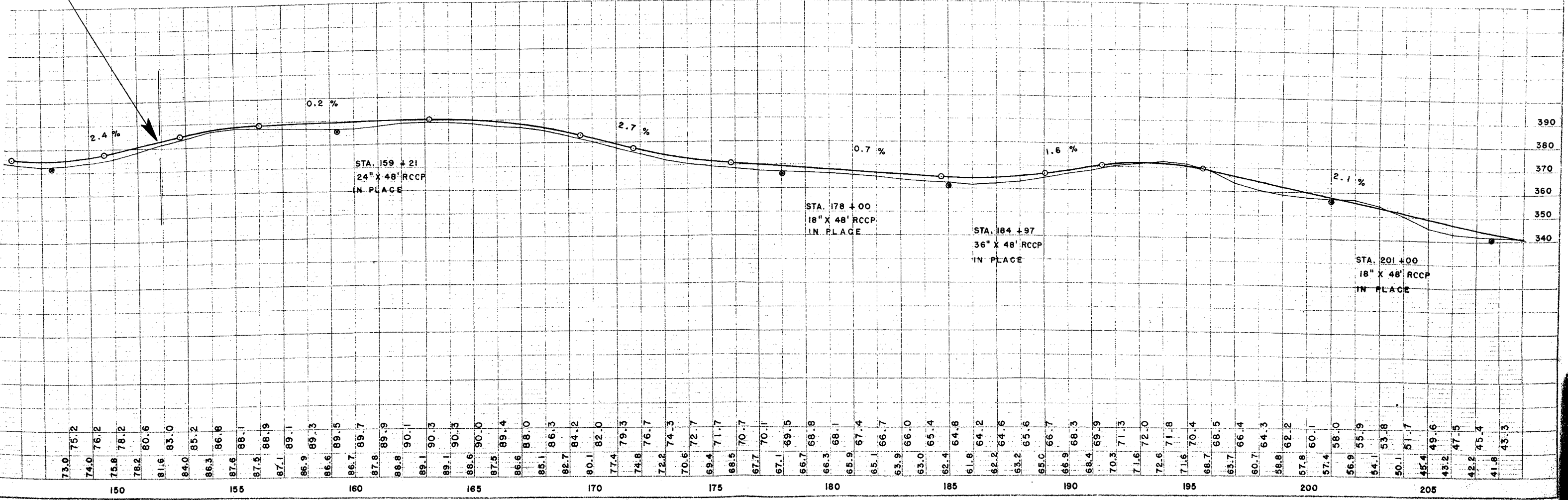
NET LENGTH OF CENTERLINE = 15,193.8 FT. = 2.878 MILES



BENCH MARKS			
11	154 + 70	SPIKE IN 18" PINE 70' R	387.80
12	171 + 50	" " " P. POLE 80' R	378.69
13	180 + 58	" " " " 30' L	368.61
14	203 + 44	" " " SW COR. TWN. HALL	353.86

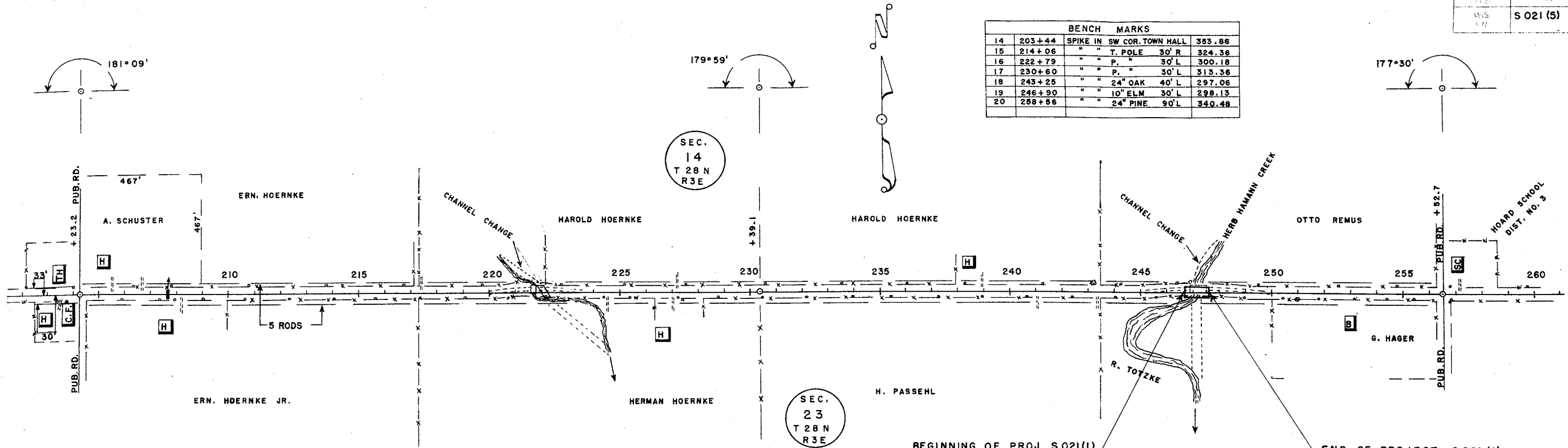


BEGINNING OF PROJECT S 021 (5)
 STATION 151 + 93.8 (=END OF PROJECT S 021 (3))



W.S. NO.	S 021 (5)	3	5
----------	-----------	---	---

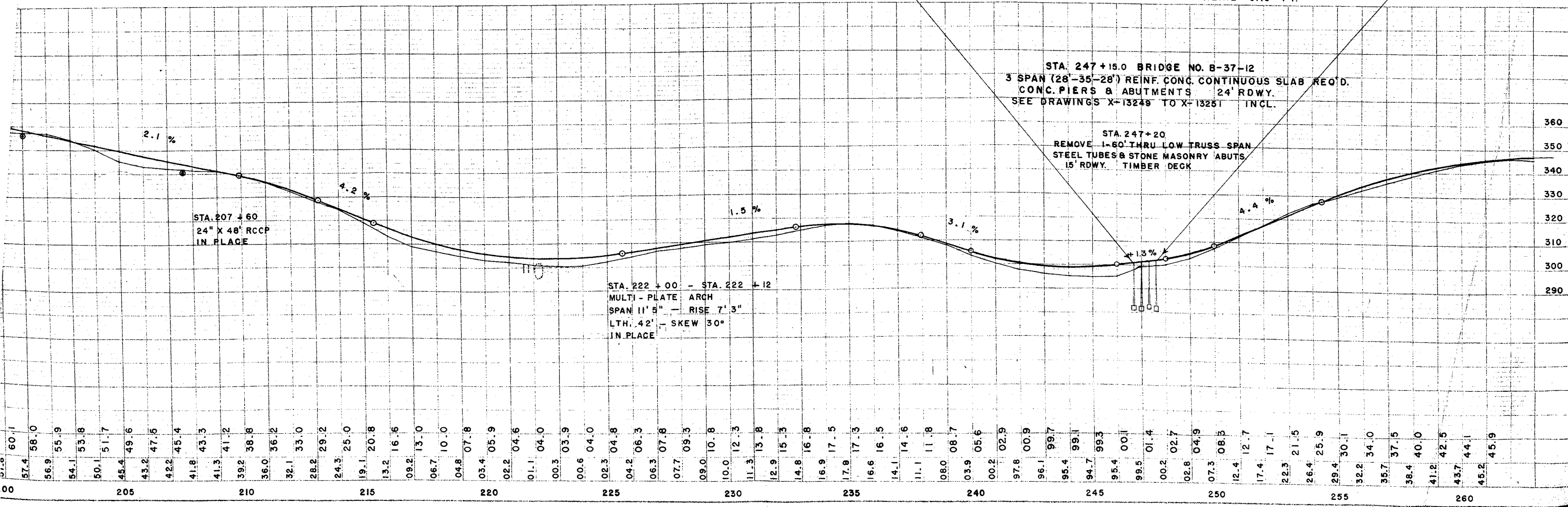
BENCH MARKS			
14	203+44	SPIKE IN SW COR. TOWN HALL	353.86
15	214+06	" " T. POLE 30' R	324.36
16	222+79	" " P. " 30' L	300.18
17	230+60	" " P. " 30' L	313.36
18	243+25	" " 24" OAK 40' L	297.06
19	246+90	" " 10" ELM 30' L	298.13
20	258+56	" " 24" PINE 90' L	340.48



BEGINNING OF PROJ. S021(1)
 STA. 246+69.25
 = STA. 246+69.25 PROJ. S021(5)

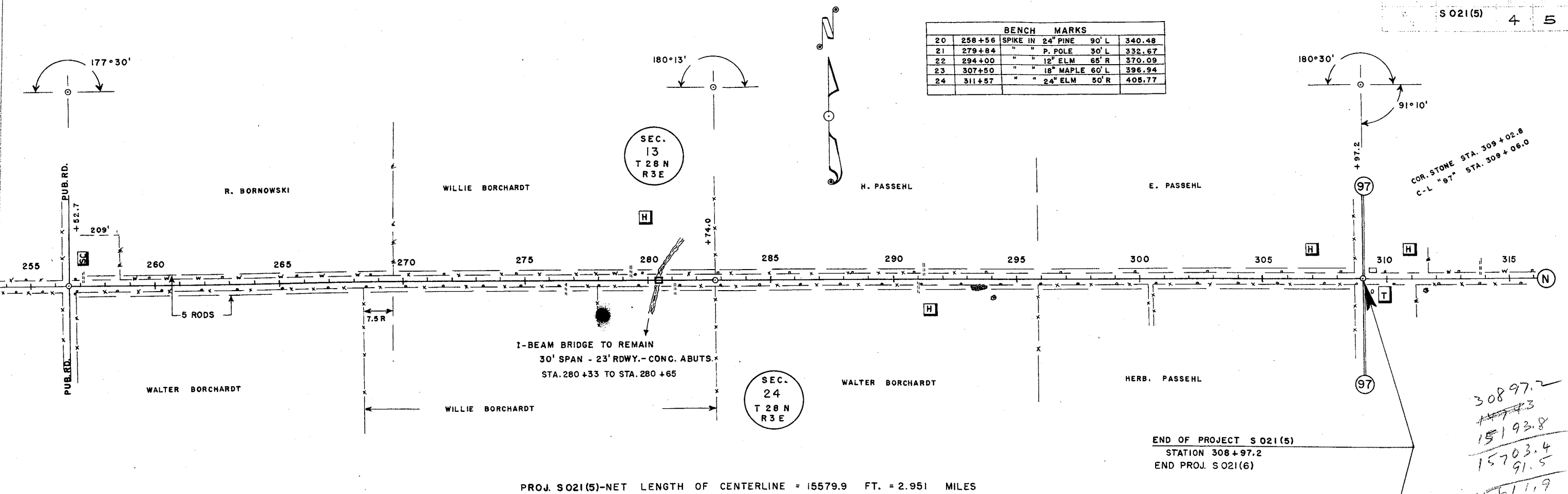
END OF PROJECT S021(1)
 STA. 247+60.75
 = STA. 247+60.75 PROJ. S021(5)

PROJ. S021(1) - NET LENGTH OF CENTERLINE = 91.5 FT.



S 021(5) 4 5

BENCH MARKS			
20	258+56	SPIKE IN 24" PINE 90' L	340.48
21	279+84	" " P. POLE 30' L	332.67
22	294+00	" " 12" ELM 65' R	370.09
23	307+50	" " 18" MAPLE 60' L	396.94
24	311+57	" " 24" ELM 50' R	405.77



PROJ. S021(5)-NET LENGTH OF CENTERLINE = 15579.9 FT. = 2.951 MILES

END OF PROJECT S 021(5)
STATION 308+97.2
END PROJ. S 021(6)

30897.2
~~15703.4~~
15193.8

15703.4
91.5

15611.9
85.6

15526.3

