

- SHEET NO. 1 TITLE
- SHEET NO. 1 TYPICAL CROSS SECTIONS
- SHEET NO. 1 ESTIMATE OF QUANTITIES
- SHEET NO. — MISCELLANEOUS QUANTITIES
- SHEET NO. — RIGHT OF WAY PLAT
- SHEET NO. 2-4 PLAN AND PROFILE STA. 151+93.8 TO STA. 308+97.2
- SHEET NO. 5 STANDARD DETAILS
- SHEET NO. — DRAINAGE STRUCTURES
- SHEET NO. — CROSS SECTIONS

STATE OF WISCONSIN STATE HIGHWAY COMMISSION OF WISCONSIN

HIGHWAY	SECTION	STATE	FEDERAL	OFFICE	SHEET	TOTAL SHEETS
37.6	21.0		11.5	WIS. 5N	1	5

PLAN AND PROFILE OF PROPOSED C.T.H. "E" - S.T.H. "97" MARATHON COUNTY PROJECT S021(5)

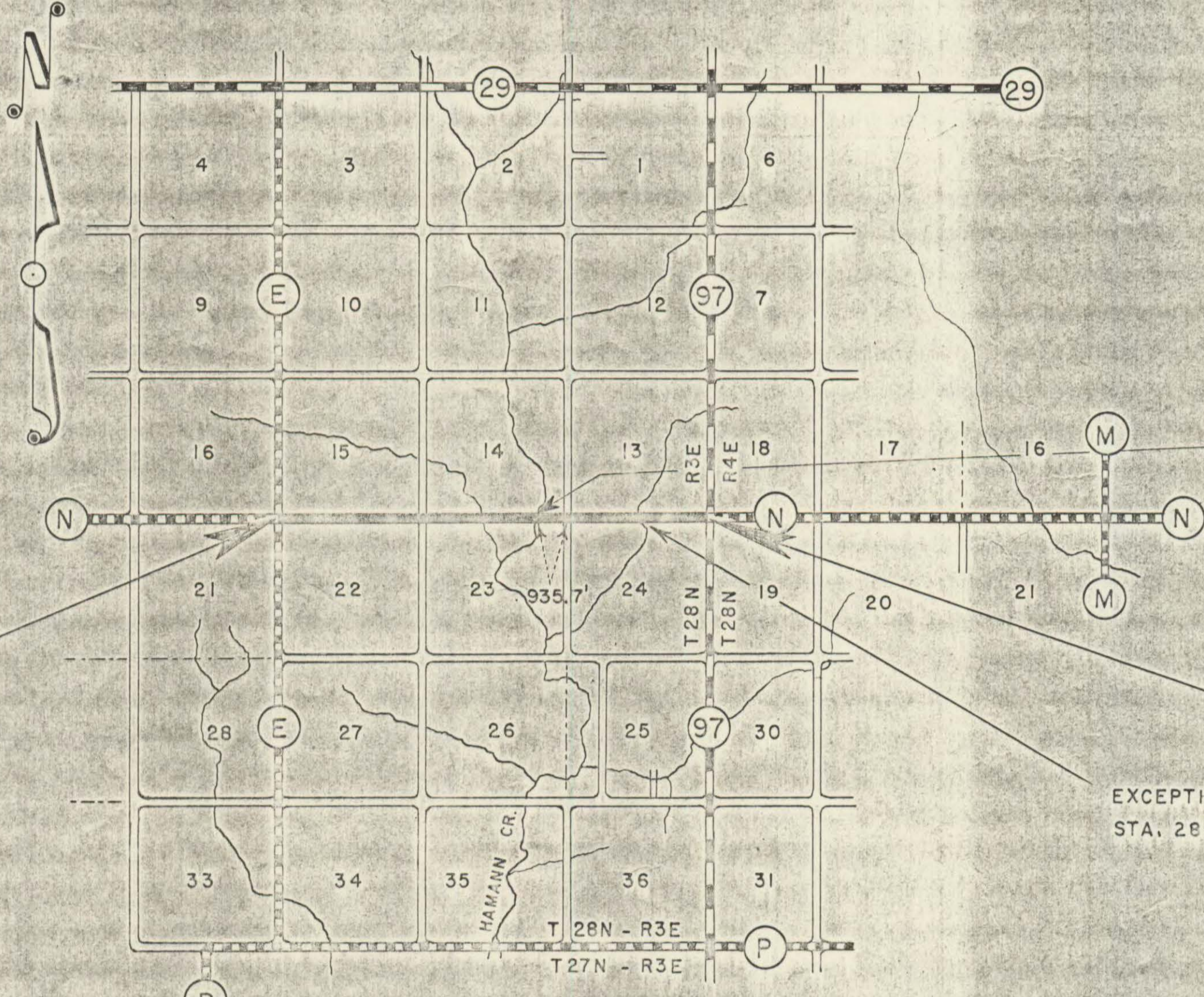
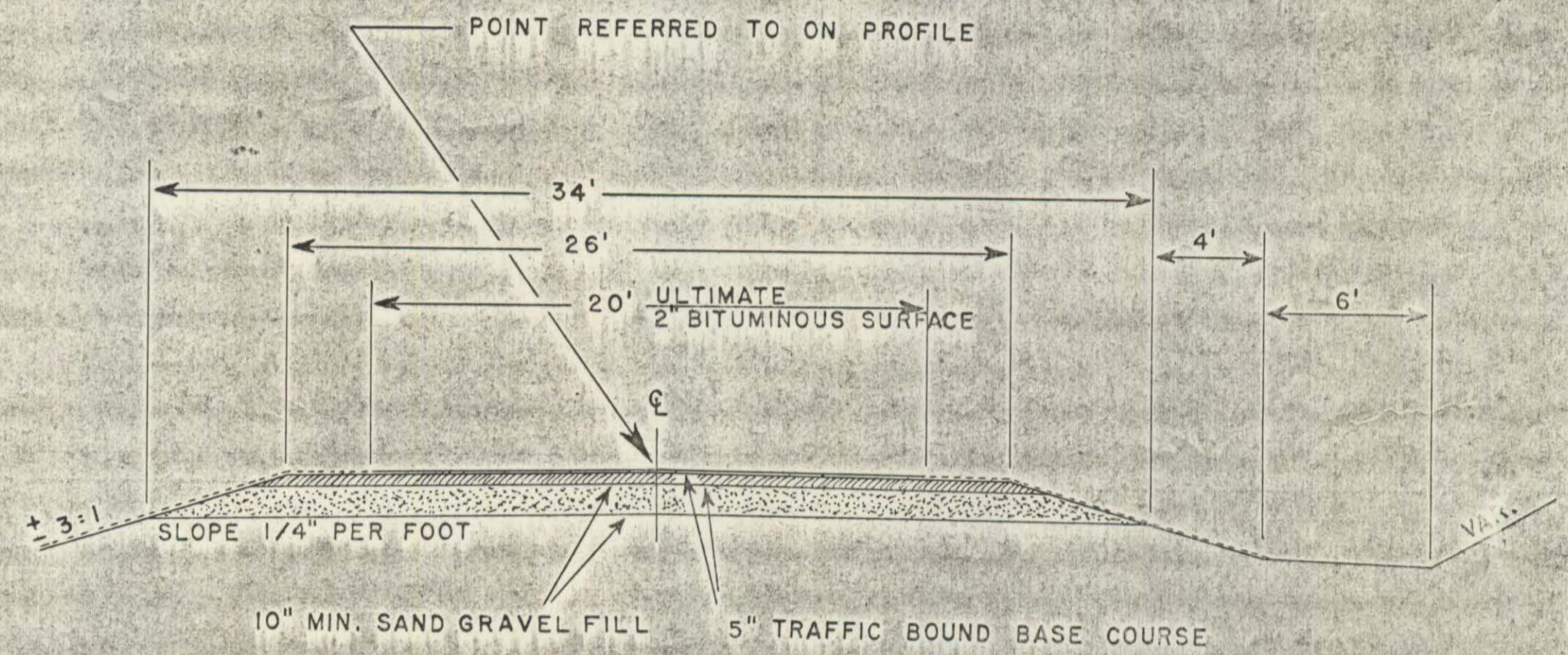
APPLICABLE STANDARD DRAWINGS
CONSTRUCTION BARRICADE 7-4.1.1



PLAN 1 IN. = 200 FT.
PROFILE HOR. 1 IN. = 200 FT. VERT. 1 IN. = 20 FT.

CONTRACT NO. 1		PROJECT S021(5)	
ESTIMATE OF QUANTITIES			
ITEM NO.	QUANTITY	UNIT	ITEM
2110-1	16500	CU. YD.	SAND GRAVEL FILL
2204-1	8300	CU. YD.	TRAFFIC BOUND BASE COURSE

THIS PROJECT IS TO BE EXECUTED UNDER THE STANDARD SPECIFICATIONS FOR ROAD AND BRIDGE CONSTRUCTION OF THE STATE HIGHWAY COMMISSION OF WISCONSIN - EDITION OF 1951. APPROVED JANUARY 23, 1952; FEDERAL AID REQUIRED CONTRACT PROVISIONS APPROVED NOVEMBER 8, 1948, AND SPECIAL PROVISIONS AS ATTACHED TO PROPOSALS.



TYPICAL SECTION
EXCEPTION TO NET CENTERLINE LENGTH OF PROJECT S021(5)
BEGINNING OF PROJECT S021(1) - STA. 246+69.25
TO END OF PROJECT S021(1) - STA. 247+60.75

BEGINNING OF PROJECT S021(5)
STATION 151+93.8
= STATION 151+93.8 END OF PROJECT S021(3)

END OF PROJECT S021(5)
STATION 308+97.2
EXCEPTION TO NET CENTERLINE LENGTH
STA. 280+33 TO STA. 280+65

CONVENTIONAL SIGNS

<p>STATE LINE [Symbol]</p> <p>COUNTY LINE [Symbol]</p> <p>TOWNSHIP OR RANGE LINE [Symbol]</p> <p>SECTION LINE [Symbol]</p> <p>NEW RIGHT OF WAY LINE [Symbol]</p> <p>PRESENT RIGHT OF WAY LINE [Symbol]</p> <p>WIRE FENCE { WOVEN [Symbol]</p> <p style="margin-left: 15px;">BARBED [Symbol]</p> <p>LOT LINE [Symbol]</p> <p>CORPORATE OR CITY LIMITS [Symbol]</p> <p>PROPERTY LINE [Symbol] PL + 32.6</p> <p>TRAVELED WAY OR P.E. [Symbol]</p> <p>RAILROADS [Symbol]</p> <p>BASE OR SURVEY LINE [Symbol]</p>	<p>CULVERTS IN PLACE [Symbol]</p> <p>CULVERTS REQUIRED [Symbol]</p> <p>DROP INLET [Symbol]</p> <p>POWER POLE [Symbol]</p> <p>TELEPHONE OR TELEGRAPH POLE [Symbol]</p> <p>RIGHT OF WAY MARKERS [Symbol]</p> <p>REFERENCE STAKE FOR HUBS ONLY [Symbol]</p> <p>MARSH [Symbol]</p> <p>HEDGE [Symbol]</p> <p>TREES [Symbol]</p> <p>GROUND ELEVATION DATUM LINE 75.9</p> <p>GRADE ELEVATION DATUM LINE 75.16</p>
--	--

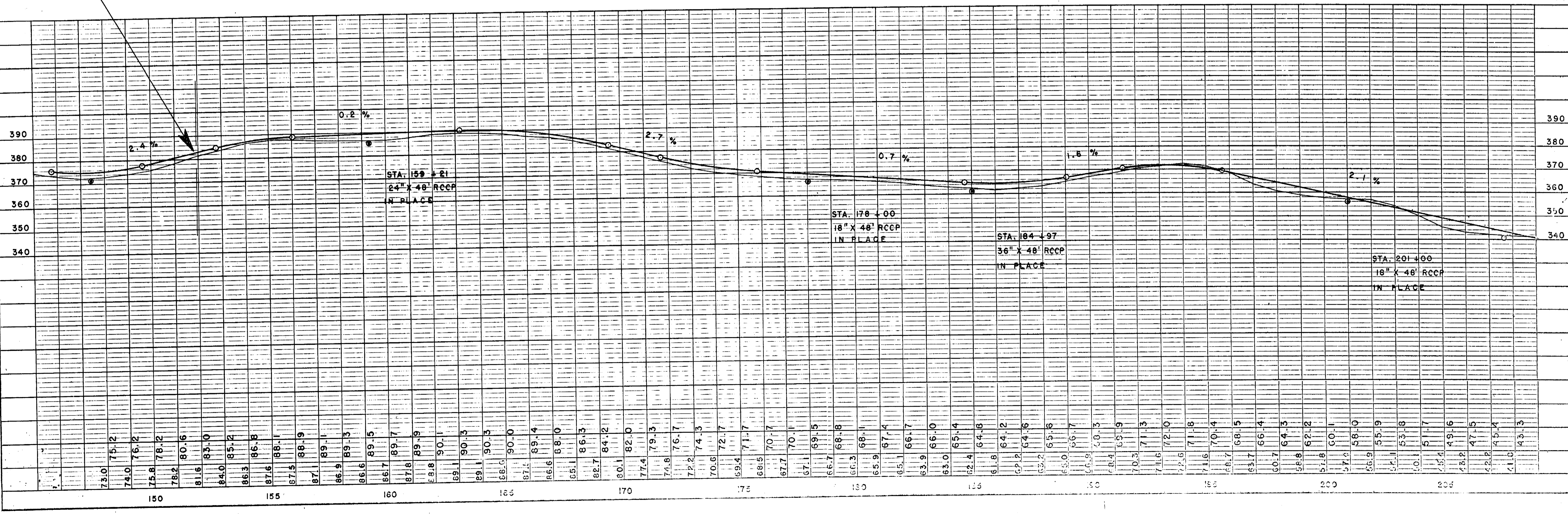
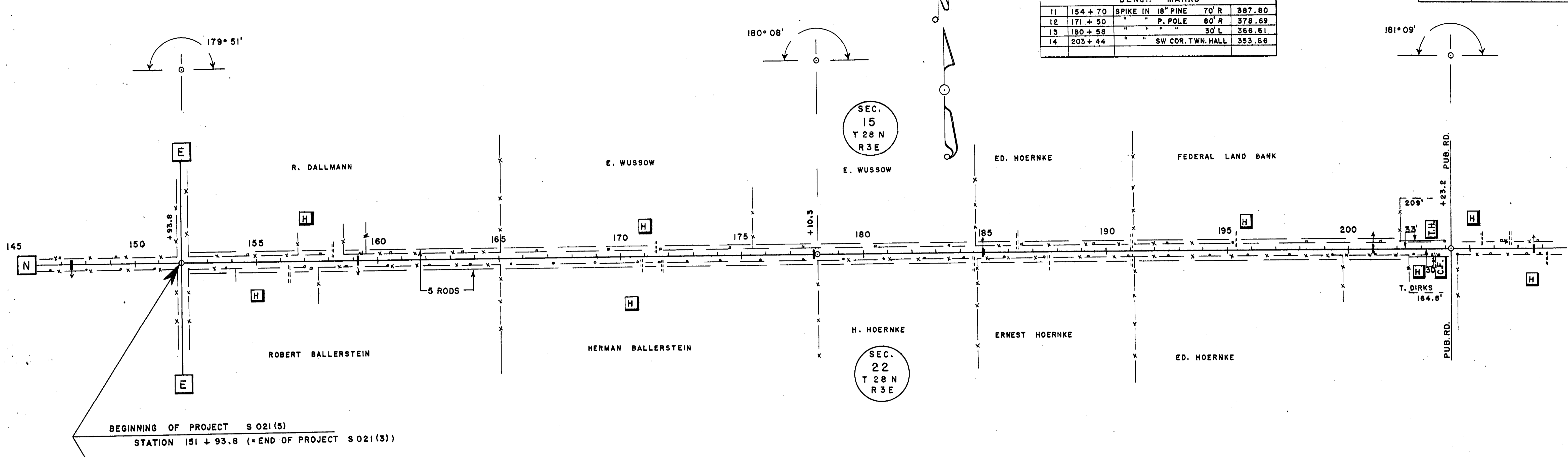
LAYOUT
SCALE 1 MILE
TOTAL NET LENGTH OF CENTERLINE = 2.951 MI. PROJECT S021(5)

STATE HIGHWAY COMMISSION OF WISCONSIN MADISON, WIS.	
SURVEYOR C.E.C. NOTE BOOK DIVISION COMPUTER C.E.C. M. O. CHECKER DIVISION CHECKER CORRECT	
CORRECT: DATE 5/15/52 <i>[Signature]</i> DIVISION ENGINEER	
RECOMMENDED FOR APPROVAL: DATE 6/12/52 <i>[Signature]</i> CONSTRUCTION ENGINEER	
APPROVED: DATE 1/12/53 <i>[Signature]</i> STATE HIGHWAY ENGINEER	

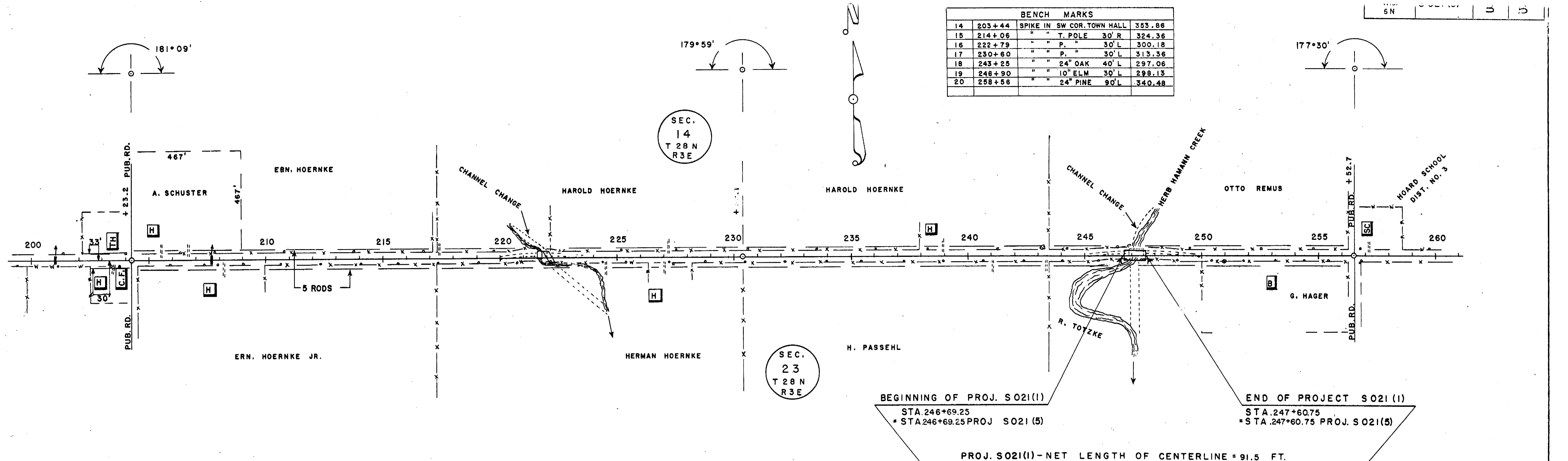
MARATHON COUNTY BY COUNTY HIGHWAY COMMISSION 4/25/52 <i>[Signature]</i>	
FEDERAL WORKS AGENCY PUBLIC ROADS ADMINISTRATION	
RECOMMENDED FOR APPROVAL:	
APPROVED:	

169
122
47
9
47.0
46.8

BENCH MARKS				
11	154 + 70	SPIKE IN 18" PINE	70' R	387.80
12	171 + 50	" " " "	80' R	378.69
13	180 + 58	" " " "	30' L	366.61
14	203 + 44	" " " "	SW COR. TWN. HALL	353.86



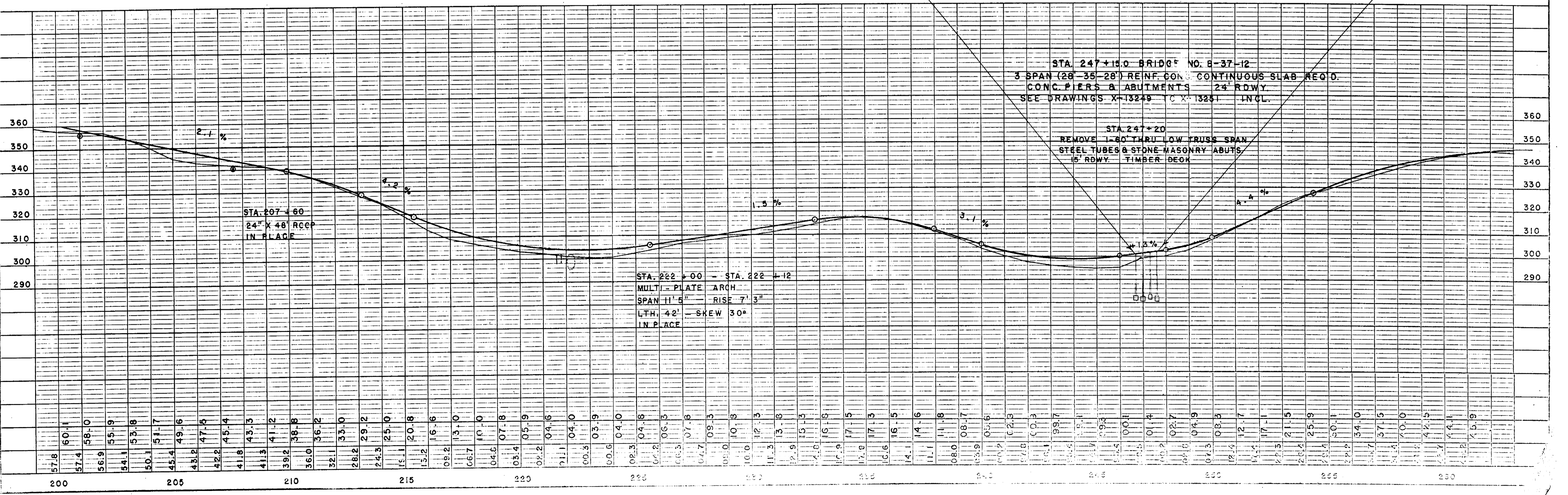
BENCH MARKS			
14	203+44	SPIKE IN SW COR. TOWN HALL	353.86
15	214+06	" " T. POLE 30' R	324.36
16	222+79	" " P. " 30' L	300.18
17	230+60	" " P. " 30' L	313.36
18	243+25	" " 24" OAK 40' L	297.06
19	246+90	" " 10" ELM 30' L	299.13
20	258+56	" " 24" PINE 90' L	340.48

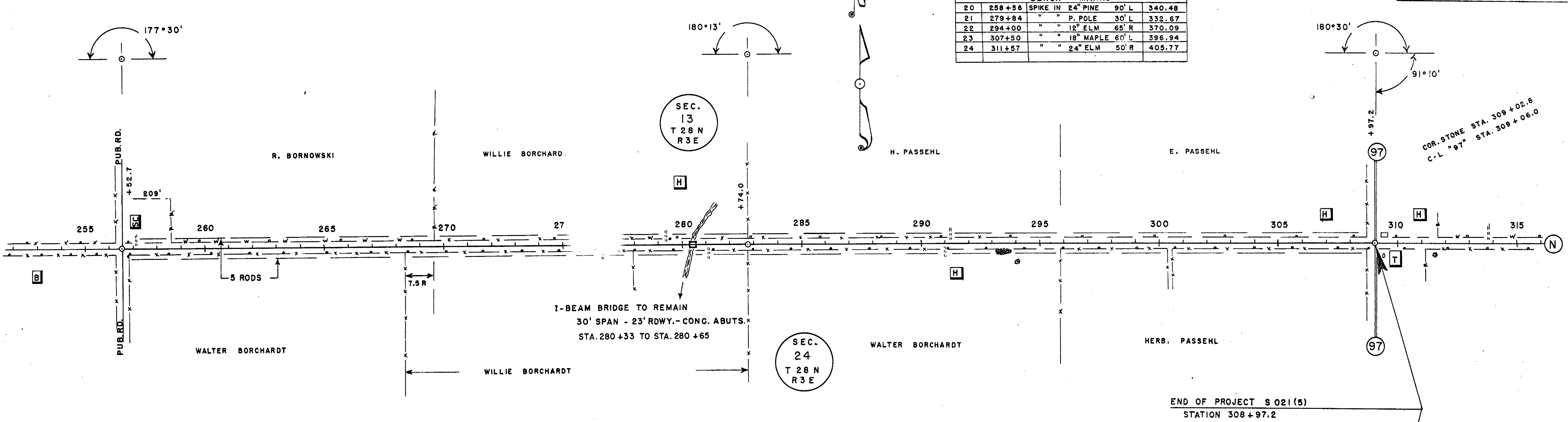


BEGINNING OF PROJ. S 021(1)
 STA. 246+69.25
 = STA. 246+69.25 PROJ. S 021(5)

END OF PROJECT S 021(1)
 STA. 247+60.75
 = STA. 247+60.75 PROJ. S 021(5)

PROJ. S 021(1) - NET LENGTH OF CENTERLINE = 91.5 FT.





PROJ. S021(5)-NET LENGTH OF CENTERLINE = 15579.9 FT. = 2.951 MILES

