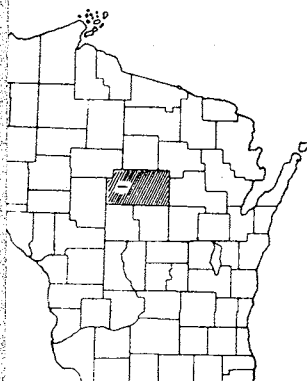


INDEX OF SHEETS

- NO. 1 TITLE
- NO. 1 TYPICAL CROSS SECTIONS
- NO. 1 ESTIMATE OF QUANTITIES
- NO. — MISCELLANEOUS QUANTITIES
- NO. — RIGHT OF WAY PLAT
- NO. 2-4 PLAN AND PROFILE STA. 151+93.8 TO STA. 308+97.2
- NO. 5 STANDARD DETAILS
- NO. — DRAINAGE STRUCTURES
- NO. — CROSS SECTIONS



STATE OF WISCONSIN
STATE HIGHWAY COMMISSION OF WISCONSIN

PLAN AND PROFILE OF PROPOSED
C.T.H. "E" - S.T.H. "97"
MARATHON COUNTY
PROJECT S021(5)

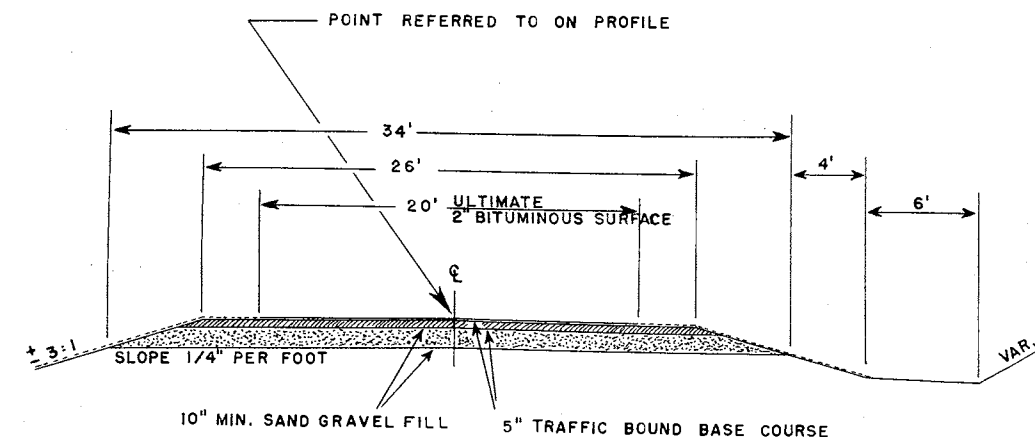
COUNTY AND HIGHWAY	ROUTE AND SECTION	CLASS AND AGREEMENT		FEDERAL DIVISION OFFICE	SHEET NUMBER	TOTAL SHEETS
		STATE	FEDERAL			
37.6	21.0		11.5	WIS. 5N	1	5

APPLICABLE STANDARD DRAWINGS
CONSTRUCTION BARRICADE 7-4.1.1

PLAN 1 IN. = 200 FT.
PROFILE HOR. 1 IN. = 200 FT. VERT. 1 IN. = 20 FT.

CONTRACT NO. 1		PROJECT S021(5)	
ESTIMATE	OF	QUANTITIES	
NO.	QUANTITY	UNIT	ITEM
1	16500	CU. YD.	SAND GRAVEL FILL
4-1	8300	CU. YD.	TRAFFIC BOUND BASE COURSE

PROJECT IS TO BE EXECUTED UNDER THE STANDARD SPECIFICATIONS ROAD AND BRIDGE CONSTRUCTION OF THE STATE HIGHWAY COMMISSION OF WISCONSIN - EDITION OF 1951. APPROVED JANUARY 23, 1952; FEDERAL AID REQUIRED CONTRACT PROVISIONS APPROVED NOVEMBER 8, 1951, AND SPECIAL PROVISIONS AS ATTACHED TO PROPOSALS.



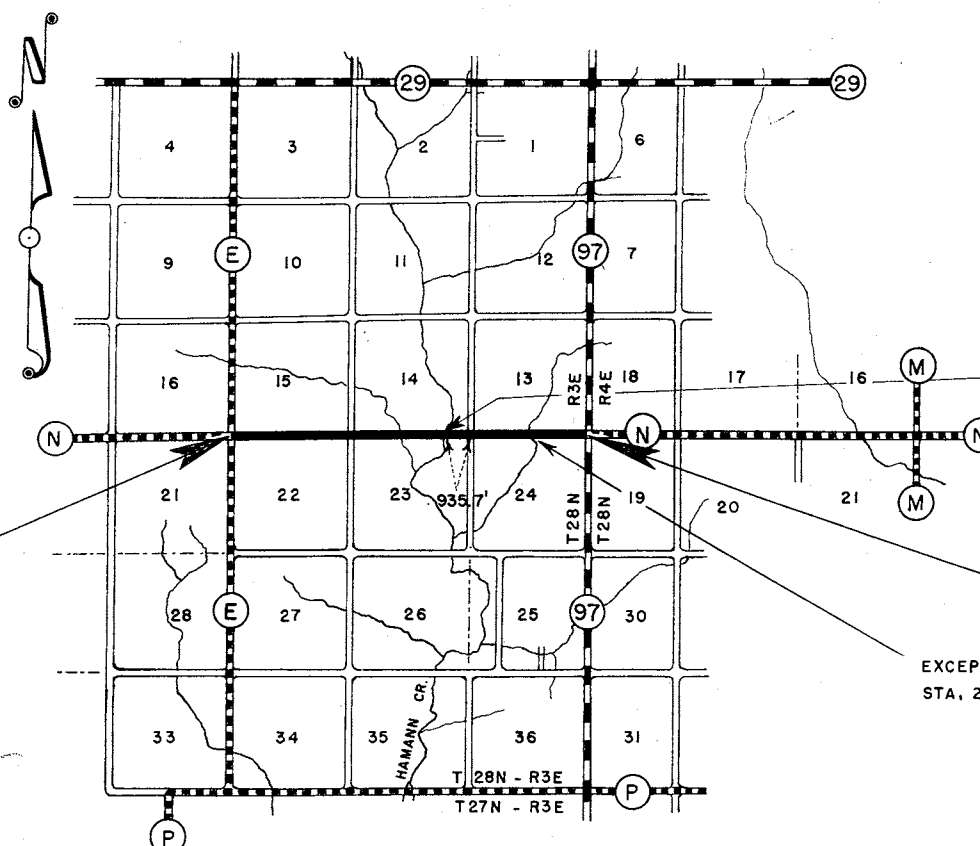
TYPICAL SECTION

EXCEPTION TO NET CENTERLINE LENGTH OF PROJECT S021(5)
BEGINNING OF PROJECT S021(1) - STA. 246+69.25
TO END OF PROJECT S021(1) - STA. 247+60.75

BEGINNING OF PROJECT S021(5)
STATION 151 + 93.8
= STATION 151 + 93.8 END OF PROJECT S021(3)

END OF PROJECT S021(5)
STATION 308 + 97.2

EXCEPTION TO NET CENTERLINE LENGTH
STA. 280 + 33 TO STA. 280 + 65



LAYOUT

SCALE 1 MILE

TOTAL NET LENGTH OF CENTERLINE = 2.951 MI. PROJECT S021(5)

CONVENTIONAL SIGNS

LINE	-----	CULVERTS IN PLACE	-----
LINE	-----	CULVERTS REQUIRED	-----
IP OR RANGE LINE	-----	DROP INLET	-----
N LINE	-----	POWER POLE	-----
HT OF WAY LINE	-----	TELEPHONE OR TELEGRAPH POLE	-----
T RIGHT OF WAY LINE	-----	RIGHT OF WAY MARKERS	-----
ENCE { WOVEN	-----	REFERENCE STAKE FOR HUBS ONLY	-----
{ BARBED	-----	MARSH	-----
IE	-----	MEGDE	-----
ATE OR CITY LIMITS	-----	TREES	-----
TY LINE	-----	GROUND ELEVATION	DATUM LINE
ED WAY OR P.E.	-----	GRADE ELEVATION	DATUM LINE
IDS	-----		
R SURVEY LINE	-----		

2862
2951
5813

MARATHON COUNTY
BY COUNTY HIGHWAY COMMISSION

4/25/52 *Hub Fuller*

STATE HIGHWAY COMMISSION OF WISCONSIN
MADISON, WIS.

SURVEYOR C.E.C. NOTE BOOK
DIVISION COMPUTER C.E.C. M.O. CHECKER
DIVISION CHECKER CORRECT

CORRECT:
DATE 5/15/52 *A. J. Hurlston* DIVISION ENGINEER

RECOMMENDED FOR APPROVAL:
DATE 6/14/52 *C. E. Feltner* CONSTRUCTION ENGINEER

APPROVED:
DATE 6/12/52 *E. C. Rostetter* STATE HIGHWAY ENGINEER

DEPARTMENT OF COMMERCE
BUREAU OF PUBLIC ROADS

RECOMMENDED FOR APPROVAL:

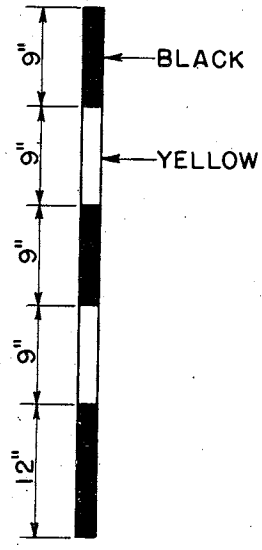
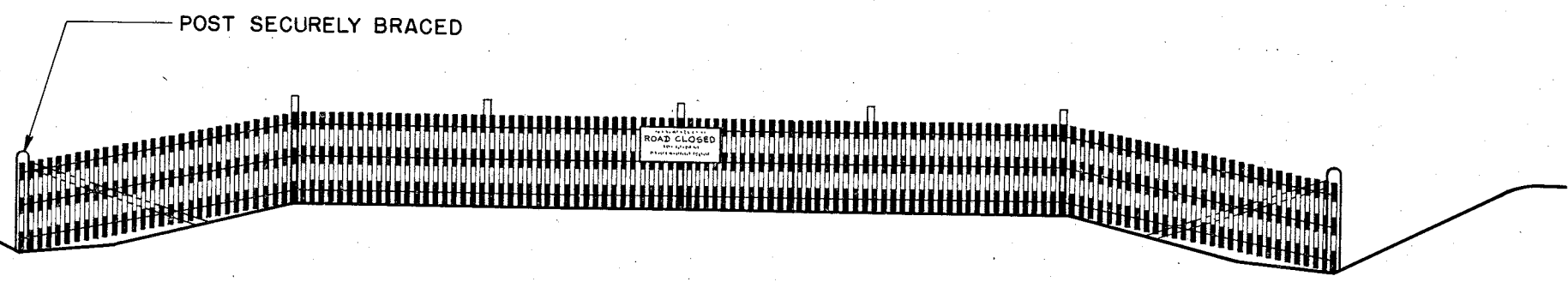
DISTRICT ENGINEER DATE

APPROVED:

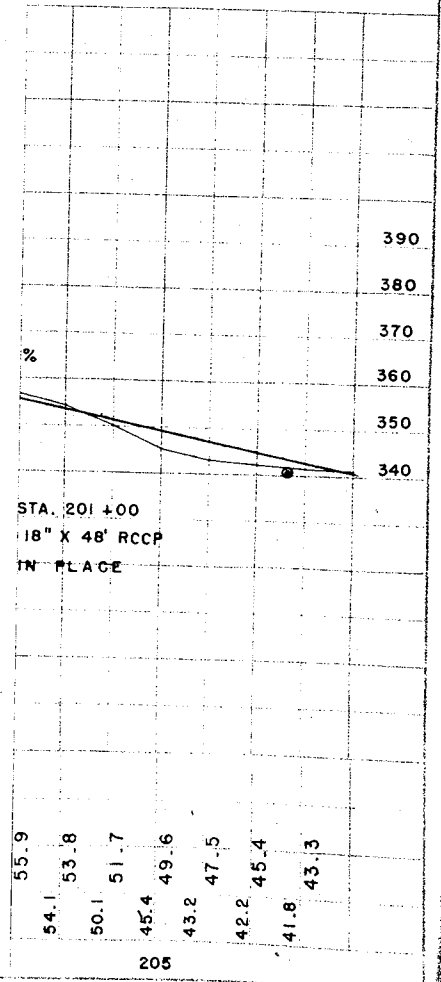
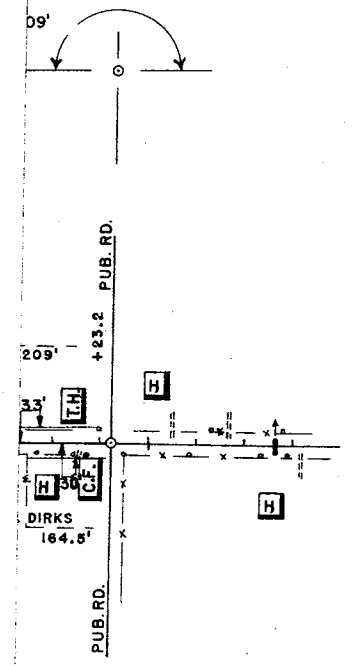
DIVISION ENGINEER DATE

SECTION OF SNOW FENCE TO BE PAINTED ALTERNATELY BLACK AND YELLOW AS SHOWN BELOW. LENGTH TO BE SUFFICIENT TO REACH FROM TOE OF THE BACKSLOPE TO TOE OF THE BACKSLOPE. PROVIDE SUFFICIENT NUMBER OF INTERMEDIATE POSTS TO ADEQUATELY SUPPORT THE FENCE.

STANDARD "ROAD CLOSED" SIGN (W.H.C.- NO. R-15) TO BE ERECTED ON FENCE AT THE TOP ON THE CENTERLINE OF ROAD. SIGN WILL BE FURNISHED BY COMMISSION.



DETAIL SHOWING METHOD OF STRIPING FOR 4' SNOW FENCE.



STATE HIGHWAY COMMISSION OF WISCONSIN

CONSTRUCTION BARRICADE

RECOMMENDED FOR APPROVAL:

Frank Crace
DESIGN ENGINEER

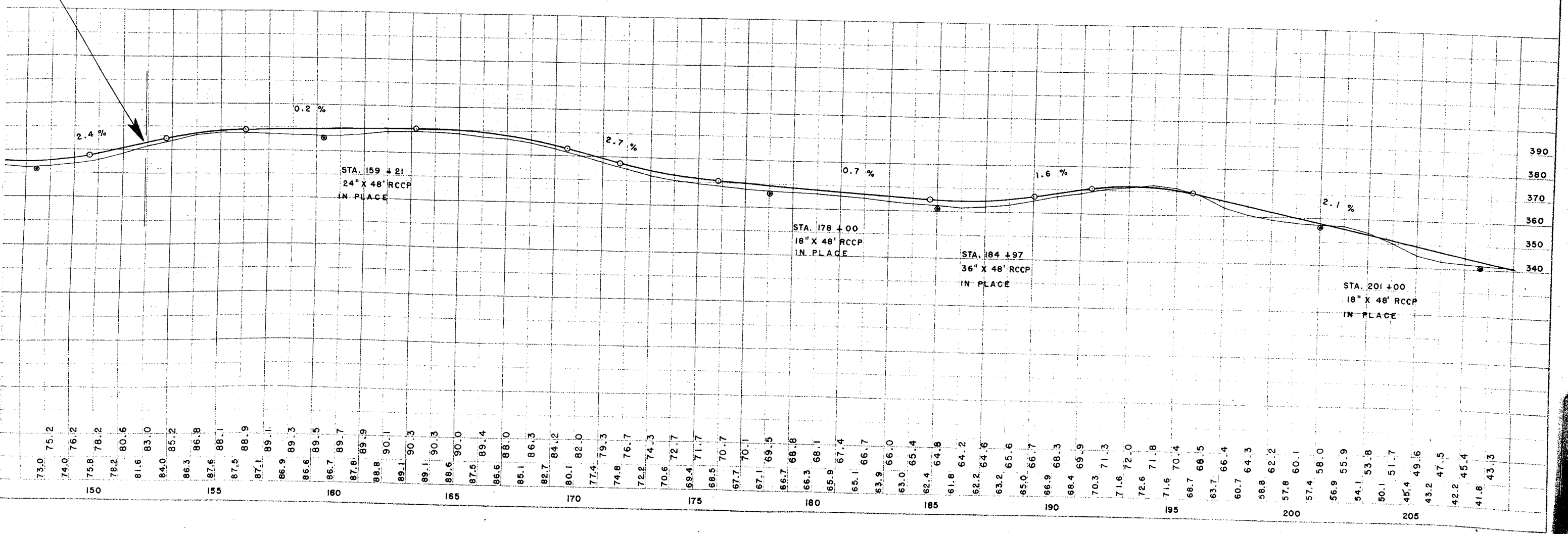
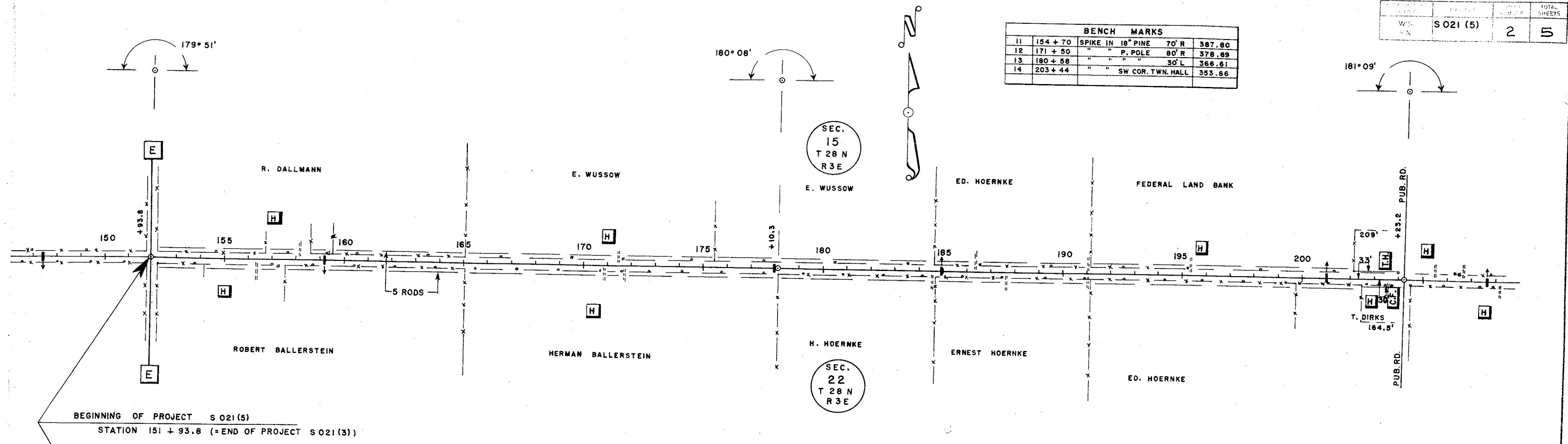
A. Bluh
CONSTRUCTION ENGINEER

APPROVED:

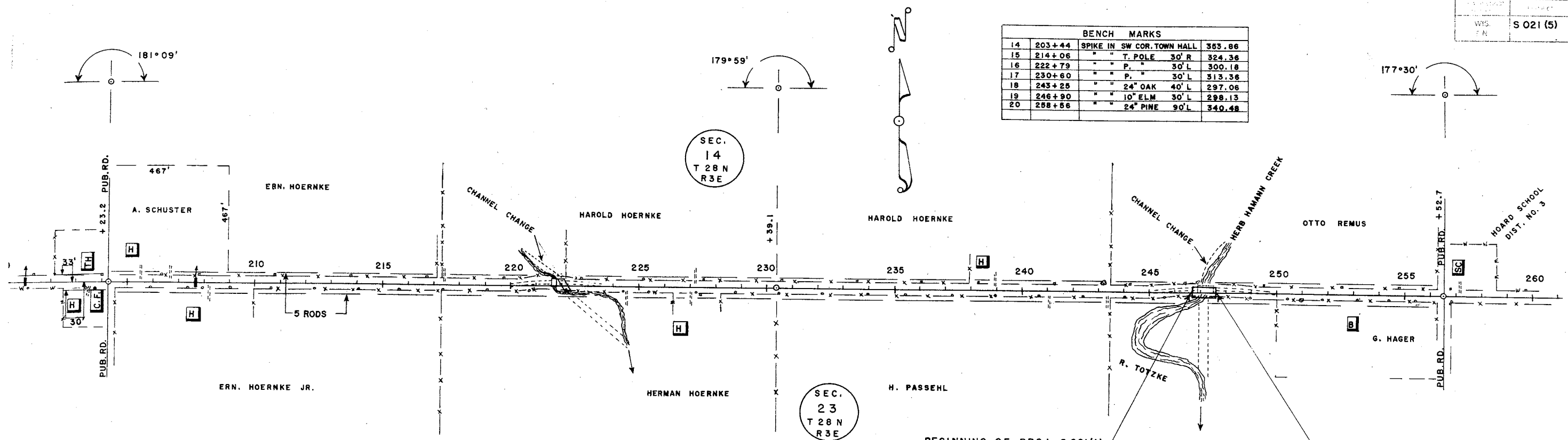
DRAWN *H.M.* DATE *OCT. 1, 1945*
CHECKED *WHG* DATE *E. G. Rottlinger*
STATE HIGHWAY ENGINEER

7-4.1.1

BENCH MARKS				
11	154 + 70	SPIKE IN 18" PINE	70' R	387.80
12	171 + 50	" " P. POLE	80' R	378.89
13	180 + 58	" " " "	30' L	366.61
14	203 + 44	" " " "	SW COR. TWN. HALL	353.86



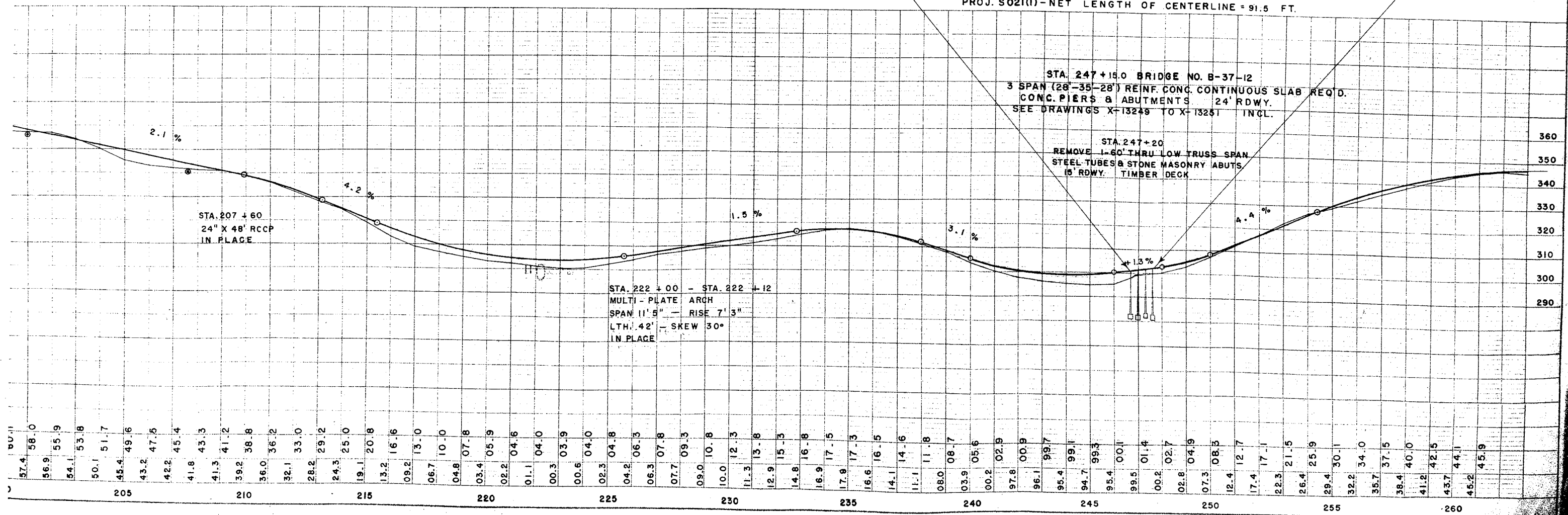
BENCH MARKS			
14	203+44	SPIKE IN SW COR. TOWN HALL	353.86
15	214+06	" " T. POLE 30' R	324.36
16	222+79	" " P. " 30' L	300.18
17	230+60	" " " " 30' L	313.36
18	243+28	" " 24" OAK 40' L	297.06
19	246+90	" " 10" ELM 30' L	298.13
20	258+56	" " 24" PINE 90' L	340.48



BEGINNING OF PROJ. S021(1)
 STA. 246+69.25
 = STA. 246+69.25 PROJ. S021(5)

END OF PROJECT S021(1)
 STA. 247+60.75
 = STA. 247+60.75 PROJ. S021(5)

PROJ. S021(1) - NET LENGTH OF CENTERLINE = 91.5 FT.



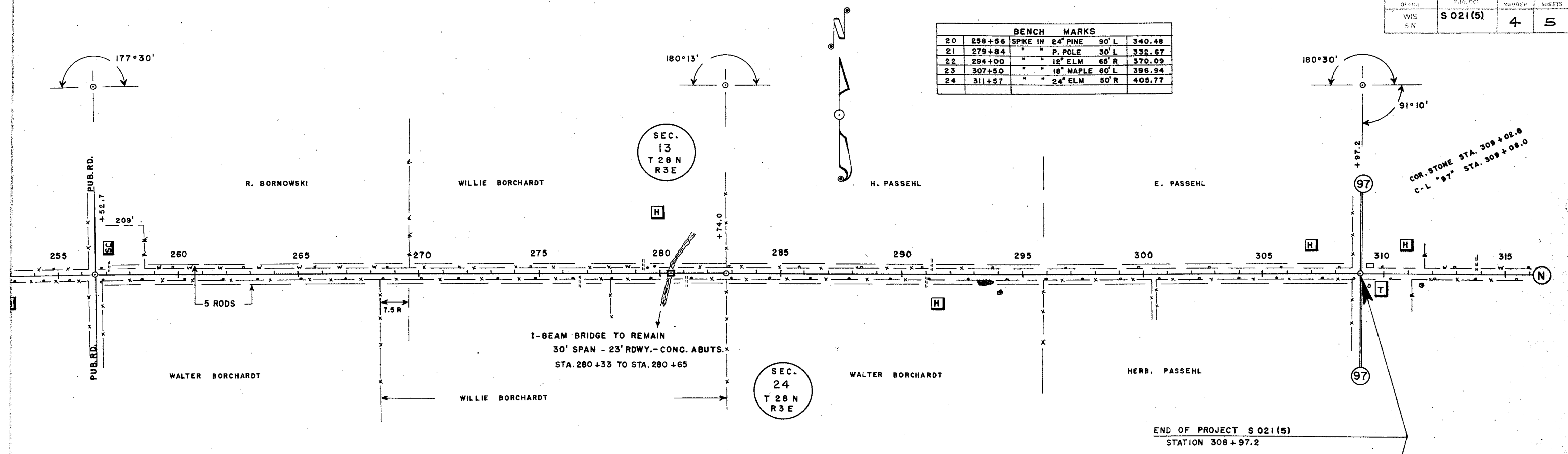
STA. 207+60
 24" X 48" RCCP
 IN PLACE

STA. 222+00 - STA. 222+12
 MULTI-PLATE ARCH
 SPAN 11' 5" - RISE 7' 3"
 LTH. 42' - SKEW 30°
 IN PLACE

STA. 247+15.0 BRIDGE NO. B-37-12
 3 SPAN (28'-35'-28') REINF. CONC. CONTINUOUS SLAB REQ'D.
 CONC. PIERS & ABUTMENTS. 24' RDWY.
 SEE DRAWINGS X-13249 TO X-13251 INCL.

STA. 247+20
 REMOVE 1-60' THRU LOW TRUSS SPAN
 STEEL TUBES & STONE MASONRY ABUTS.
 15' RDWY. TIMBER DECK

BENCH MARKS			
20	258+56	SPIKE IN 24" PINE	90' L 340.48
21	279+84	" " P. POLE	30' L 332.67
22	294+00	" " 12" ELM	65' R 370.09
23	307+50	" " 18" MAPLE	60' L 396.94
24	311+57	" " 24" ELM	50' R 405.77



PROJ. S021(5)-NET LENGTH OF CENTERLINE = 15579.9 FT. = 2.951 MILES

