

INDEX OF SHEETS

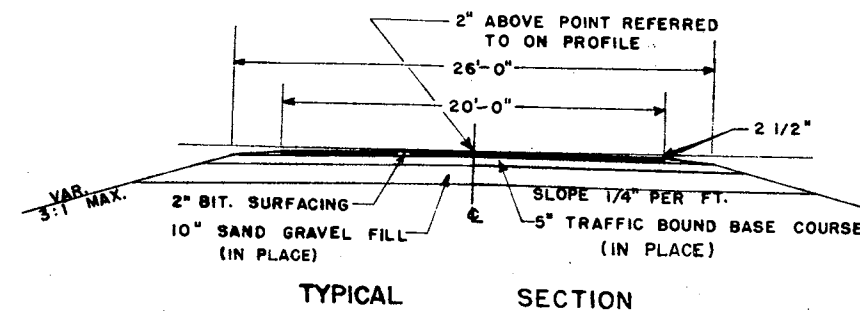
SHEET NO. 1	TITLE
SHEET NO. 1	TYPICAL CROSS SECTIONS
SHEET NO. 1	ESTIMATE OF QUANTITIES
SHEET NO. NONE	MISCELLANEOUS QUANTITIES
SHEET NO. NONE	RIGHT OF WAY PLAT
SHEET NO. 2-4	PLAN AND PROFILE STA. 309+15.0 TO STA. 447+60.4
SHEET NO. -	STANDARD DETAILS
SHEET NO. -	DRAINAGE STRUCTURES
SHEET NO. -	CROSS SECTIONS



STATE OF WISCONSIN
STATE HIGHWAY COMMISSION OF WISCONSIN

COUNTY AND HIGHWAY	ROUTE AND SECTION	CLASS AND AGREEMENT STATE	FEDERAL	FEDERAL DIVISION OFFICE	SHEET NUMBER	TOTAL SHEETS
37.6	21.0		11.8	WIS. 5N	1	4

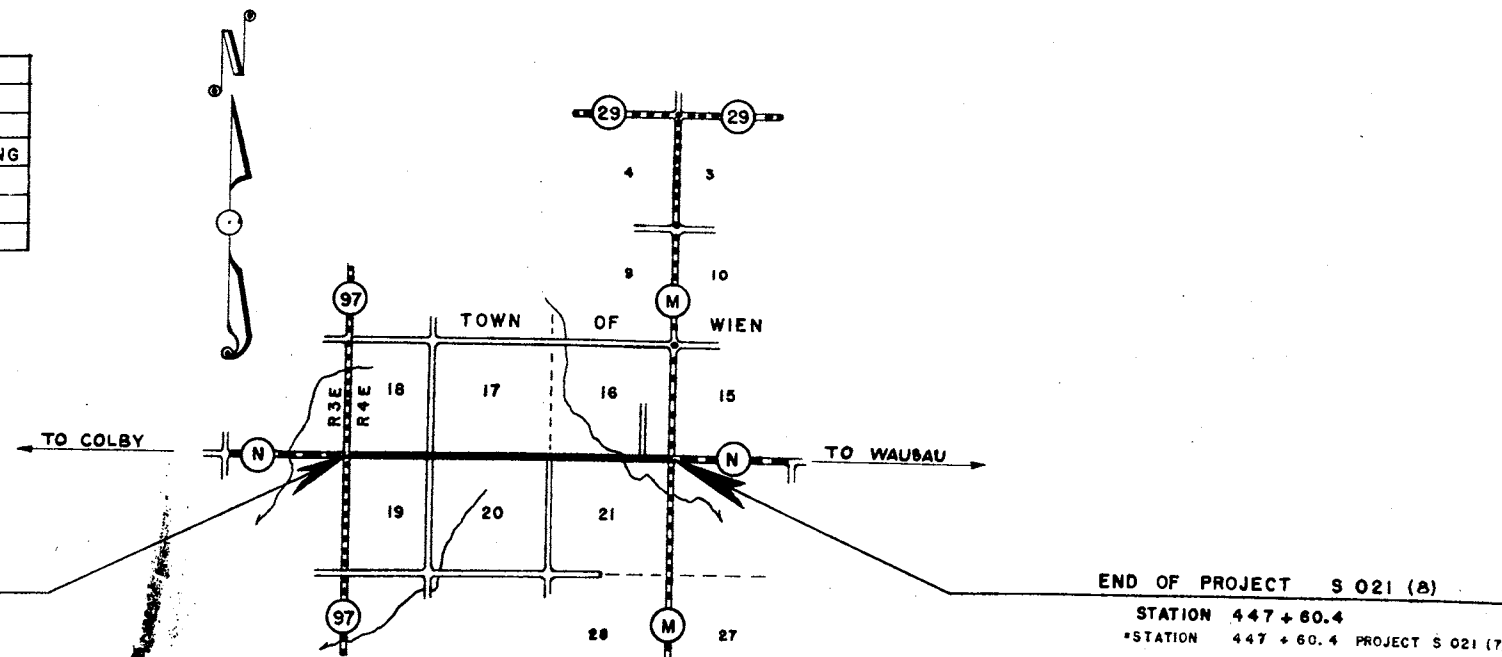
PLAN AND PROFILE OF PROPOSED
S.T.H. 97 - C.T.H. "M"
MARATHON COUNTY
PROJECT S 021(8)



PLAN 1 IN. = 200 FT.
PROFILE HOR. 1 IN. = 200 FT. VERT. 1 IN. = 20 FT.

CONTRACT NO. 1		PROJECT S 021(8)	
ITEM NO.	QUANTITY	UNIT	ITEM
2204-1	500	CU. YD.	TRAFFIC BOUND BASE COURSE
2310-1	138.5	STA	PREPARATION OF ROADBED FOR BITUMINOUS SURFACING
2311-1	8000	GAL.	BITUMINOUS MATERIAL FOR PRIME COAT
2314-1	56000	GAL.	BITUMINOUS MATERIAL FOR SURFACE COURSE
2315-1	2200	CU. YD.	SINGLE AGGREGATE BITUMINOUS SURFACE

THIS PROJECT IS TO BE EXECUTED UNDER THE STANDARD SPECIFICATIONS FOR ROAD AND BRIDGE CONSTRUCTION OF THE STATE HIGHWAY COMMISSION OF WISCONSIN-EDITION OF 1951. APPROVED JANUARY 23, 1952; FEDERAL AID REQUIRED CONTRACT PROVISIONS APPROVED NOVEMBER 8, 1948, AND SPECIAL PROVISIONS AS ATTACHED TO PROPOSALS.



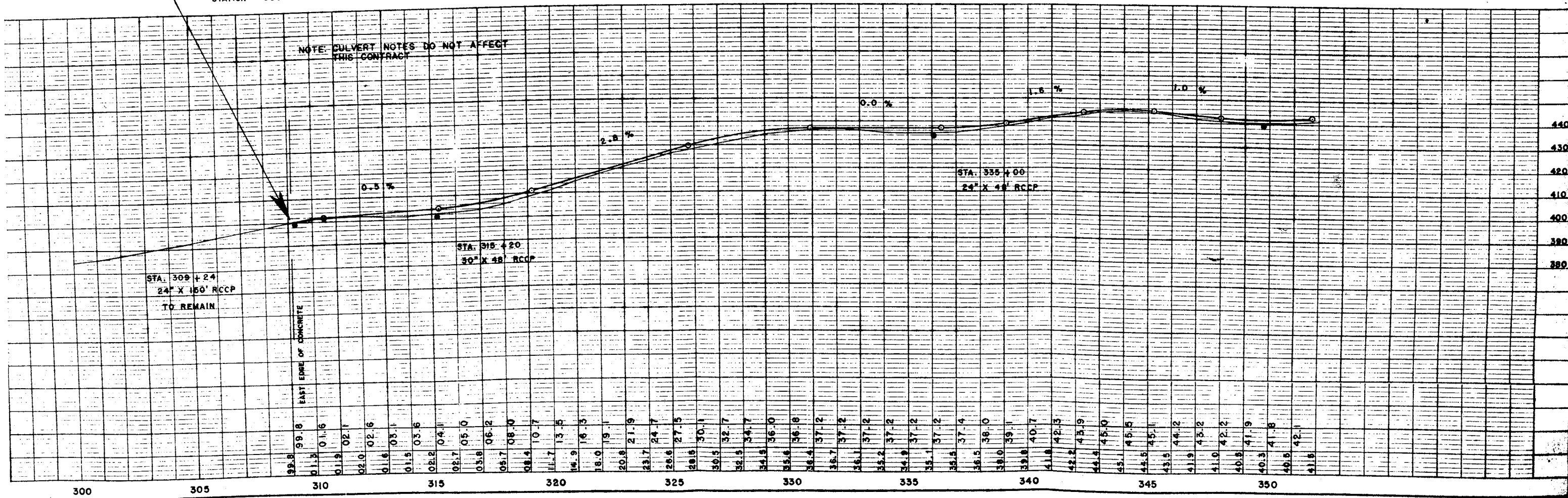
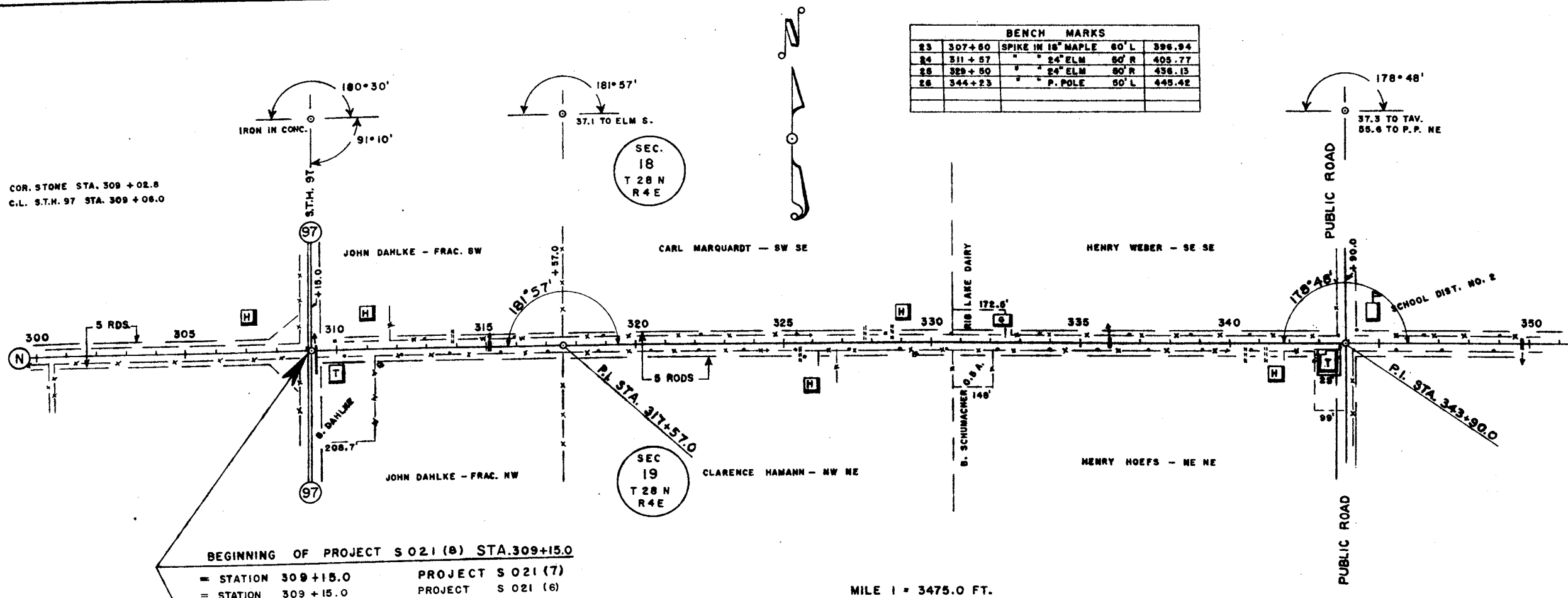
CONVENTIONAL SIGNS

PROPERTY LINE	-----	CULVERTS IN PLACE	-----
SHIP OR RANGE LINE	-----	CULVERTS REQUIRED	-----
SECTION LINE	-----	DROP INLET	-----
RIGHT OF WAY LINE	-----	POWER POLE	-----
BENT RIGHT OF WAY LINE	-----	TELEPHONE OR TELEGRAPH POLE	-----
FENCE WOVEN	-----	RIGHT OF WAY MARKERS	-----
FENCE BARBED	-----	REFERENCE STAKE FOR HUBS ONLY	-----
LINE	-----	MARSH	-----
INCORPORATE OR CITY LIMITS	-----	HEDGE	-----
PROPERTY LINE	-----	TREES	-----
VEHICULAR WAY OR P.E.	-----	GROUND ELEVATION	DATUM LINE 73.9
ROADS	-----	GRADE ELEVATION	DATUM LINE 73.9
OR SURVEY LINE	-----		

LAYOUT
SCALE 1 MILE
TOTAL NET LENGTH OF CENTERLINE = 2.622 MI.

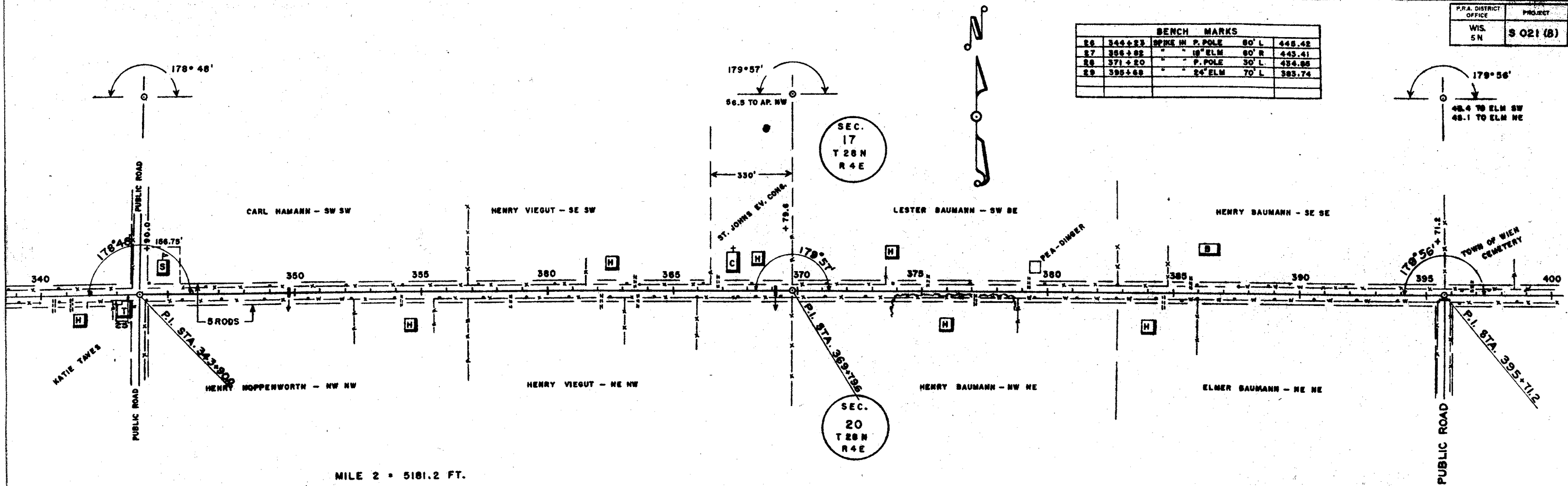
STATE HIGHWAY COMMISSION OF WISCONSIN MADISON, WIS.		DEPARTMENT OF COMMERCE BUREAU OF PUBLIC ROADS	
SURVEYOR	C.E.C.	NOTE BOOK	
DIVISION COMPUTER	C.E.C.	M. O. CHECKER	
DIVISION CHECKER		CORRECT	
CORRECT:		RECOMMENDED FOR APPROVAL:	
DATE	3/1/54	DISTRICT ENGINEER	
RECOMMENDED FOR APPROVAL:		DISTRICT ENGINEER	DATE
DATE	3/1/54	ENGINEER OF DESIGN	
APPROVED:		APPROVED:	
DATE	3/1/54	STATE HIGHWAY ENGINEER	DIVISION ENGINEER
			DATE

BENCH MARKS			
23	307+80	SPIKE IN 18" MAPLE	60' L 396.94
24	311+57	" 24" ELM	60' R 405.77
25	329+50	" 24" ELM	60' R 436.15
26	344+23	" P. POLE	60' L 445.42

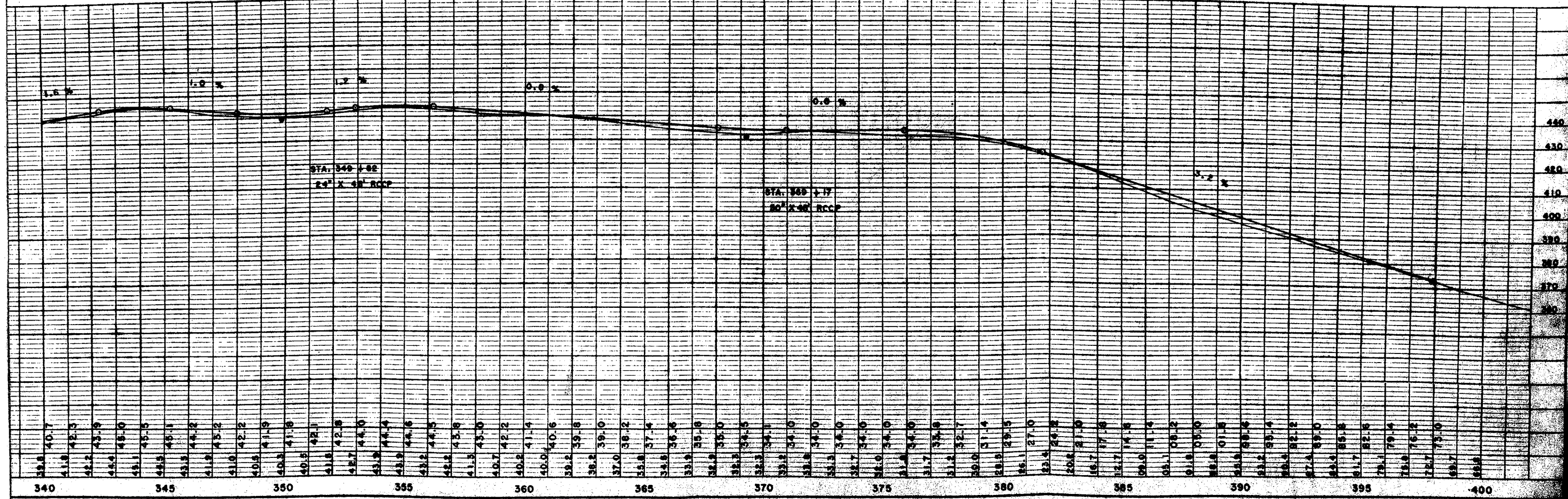


P.R.A. DISTRICT OFFICE	PROJECT	SHEET NUMBER	TOTAL SHEETS
WIS 5 N	S 021 (B)	3	4

BENCH MARKS			
26	344+23	SPIKE IN P. POLE	80' L 448.42
27	356+82	" " 18" ELM	60' R 443.41
28	371+20	" " P. POLE	30' L 454.85
29	395+69	" " 24" ELM	70' L 383.74

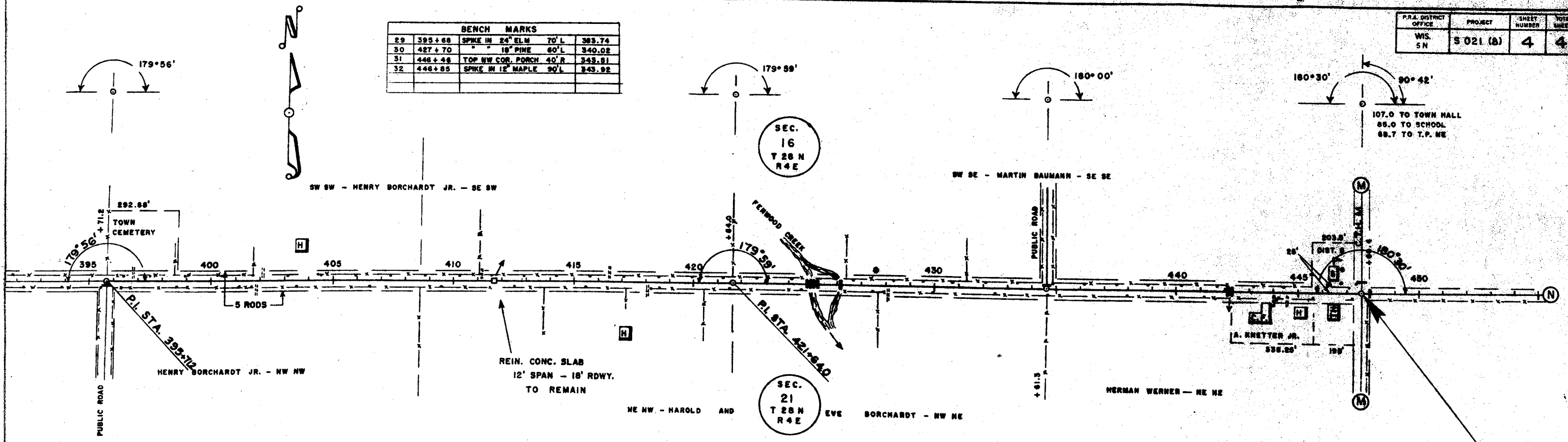


MILE 2 = 5181.2 FT.



P.R.A. DISTRICT OFFICE	PROJECT	SHEET NUMBER	TOTAL SHEETS
WS. 5N	S 021 (8)	4	4

BENCH MARKS			
29	395+68	SPIKE IN 24" ELM 70' L	393.74
30	427+70	" " 18" PINE 60' L	340.02
31	446+46	TOP NW COR. PORCH 40' R	343.81
32	446+85	SPIKE IN 12" MAPLE 90' L	343.92



MILE 3 = 5189.2 FT.

NET LENGTH OF CENTERLINE = 13,845.4 FT. = 2.622 MILES

END OF PROJECT SO21(8)
 STATION 447 + 60.4
 STATION 447 + 60.4 PROJECT S 021 (7)

