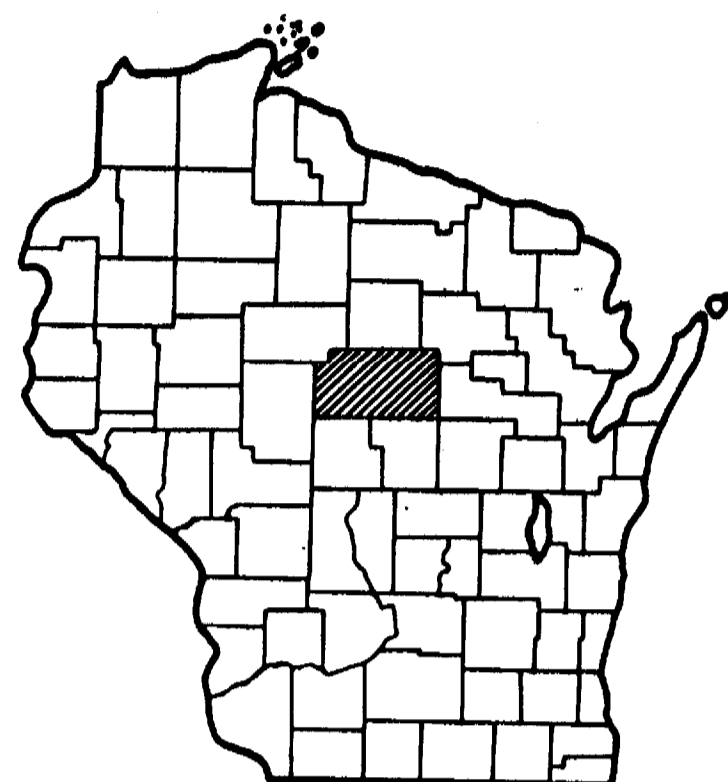


Index of Sheets

Sheet No.	Title
Sheet No. 1	Title
Sheet No. 2-2.1	Typical Cross Sections
Sheet No. 3	Estimate of Quantities
Sheet No. 3	Miscellaneous Quantities
Sheet No. —	Right of Way Plat
Sheet No. 5-5.1	Plan and Profile
Sheet No. 6-6.3	Standard Details
Sheet No. —	Structure Plans
Sheet No. —	Computer Earthwork Data
Sheet No. —	Cross Sections

TOTAL SHEETS = 10



STATE OF WISCONSIN
DEPARTMENT OF TRANSPORTATION
DIVISION OF HIGHWAYS

PLAN AND PROFILE OF PROPOSED
WAUSAU-EAST COUNTY LINE
C.T.H. "N"
MARATHON COUNTY

STATE PROJECT NUMBER
9439-2-71

Scales
 Plan 1 in. = 400 ft.

Design Designation

A.D.T. 1975	=	630 - 1500
A.D.T. 1990	=	850 - 2300
D.H.V.	=	43 - 115
D.	=	50 - 50
T.	=	8% A.D.T.
V.	=	50 M.P.H.

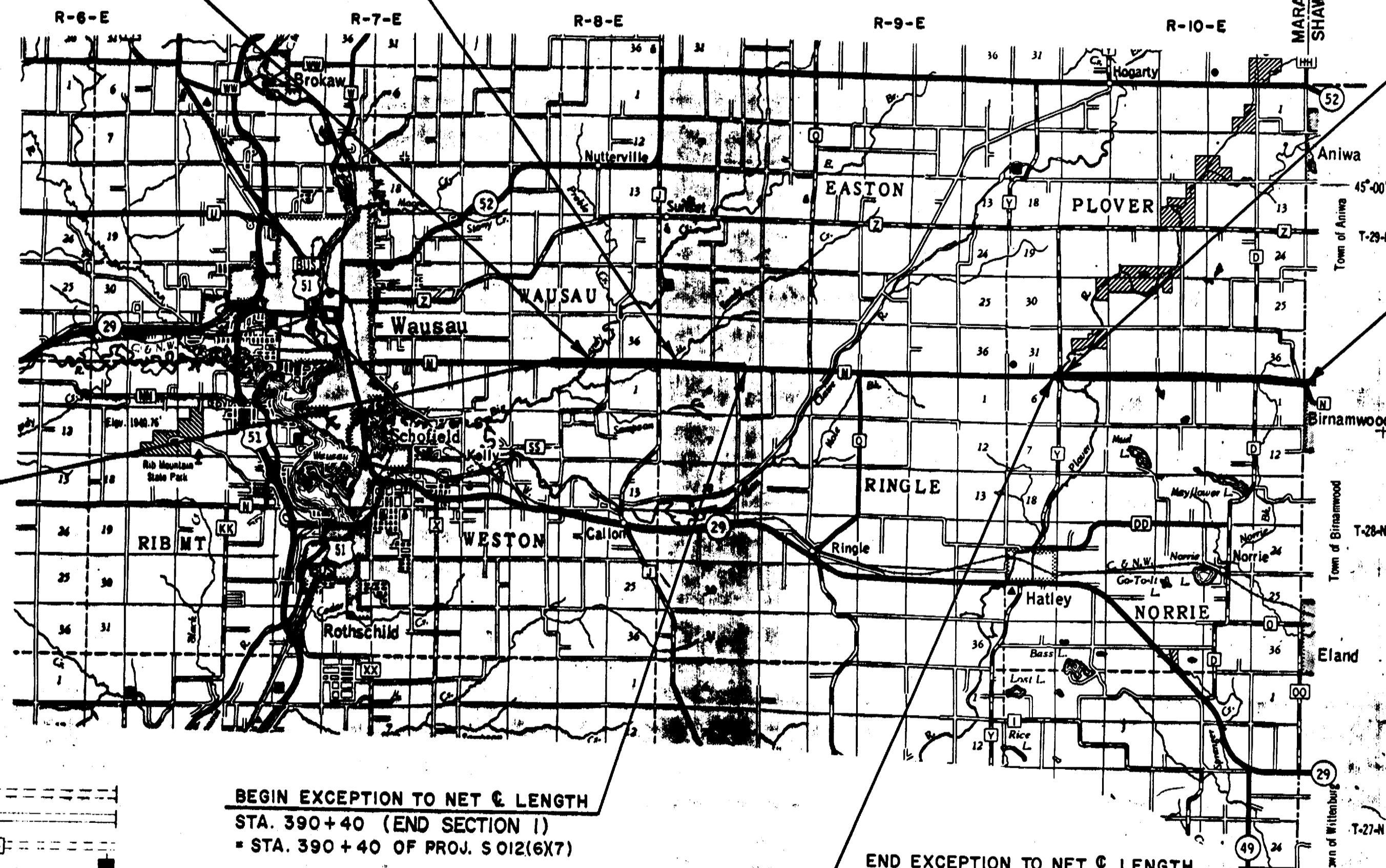
BEGIN PROJECT 9439-2-71
STA. 194+80 (BEGIN SECTION 1)
 N = 405,800 (±200')
 E = 2,124,400 (±200')
 500' W. of N.E. Cor. Sec. 3
 T28N, R8E
 = STA. 194+80 (PROJ. S012(6))

STA. 229+36 TO STA. 230+14
 EXCEPTION TO NET & LENGTH
 = STA. 29+56 TO STA. 30+34
 OF PROJ. S012(4) B-37-45

STA. 314+64 TO STA. 314+96
 EXCEPTION TO NET & LENGTH
 = STA. 114+84 TO STA. 115+16
 OF PROJ. S012(4) B-37-46

STA. 399+98.25 TO STA. 400+45.75
 EXCEPTION TO NET & LENGTH
 = STA. 399+98.25 TO STA. 400+45.75
 BEGIN PROJ. DS 012(5) B-37-18
 BEGIN PROJ. S 012(4) STA. 400+45.75

END PROJECT 9439-2-71
STA. 664+03.9 (END SECTION 2)
 N = 404,700 (±200')
 E = 2,201,000 (±200')
 646' S. of N.E. Cor. Sec. 1
 T28N, R10E
 = STA. 664+03.9. END OF PROJECTS DS 012(5) & S 012(4)



BEGIN EXCEPTION TO NET & LENGTH
STA. 390+40 (END SECTION 1)
 = STA. 390+40 OF PROJ. S 012(6)(7)

END EXCEPTION TO NET & LENGTH
STA. 397+70.35 (BEGIN SECTION 2)
 = STA. 736+43 END OF PROJ. S 012(6)(7)
 = STA. 397+70.35 BEGIN PROJ. DS 012(5) & S 012(4)

Conventional Signs

County Line	-----	Culverts in Place	-----
Township or Range Line	-----	Culverts Required	-----
Section Line	-----	Drop Inlet	-----
New Right of Way Line	-----	Power Pole	-----
Present Right of Way Line	-----	Telephone or Telegraph Pole	-----
Wire Fence	-----	Right of Way Markers	-----
Corporate or City Limits	-----	Reference Stake for Hubs Only	-----
Property Line	-----	Marsh	-----
Traveled Way or P.E.	-----	Hedge	-----
Railroads	-----	Trees	-----
Base or Survey Line	-----	Ground Elevation	Datum Line
Caution Symbol (combustible fluids under pressure)	-----	Grade Elevation	Datum Line

Layout
 Scale — ONE MILE
 Total Net Length of Centerline = 8.726 Mi.

COORDINATES ARE SCALED FROM U.S.G.S. TOPOGRAPHIC MAPS, WAUSAU AND WITTENBERG WIS. QUADRANGLES FOR IDENTIFICATION ONLY AND ARE REFERENCED TO THE WISCONSIN COORDINATE SYSTEM, CENTRAL ZONE.

STATE PROJECT	FEDERAL PROJECT	
	PROJECT	CONTRACT
9439-2-71	RS 012 (11)	1

APPROVED FOR MARATHON COUNTY
Calvin E. Cook
 Highway Commissioner
 DATE 2-10-76 TITLE

STATE OF WISCONSIN
 DEPARTMENT OF TRANSPORTATION
 DIVISION OF HIGHWAYS

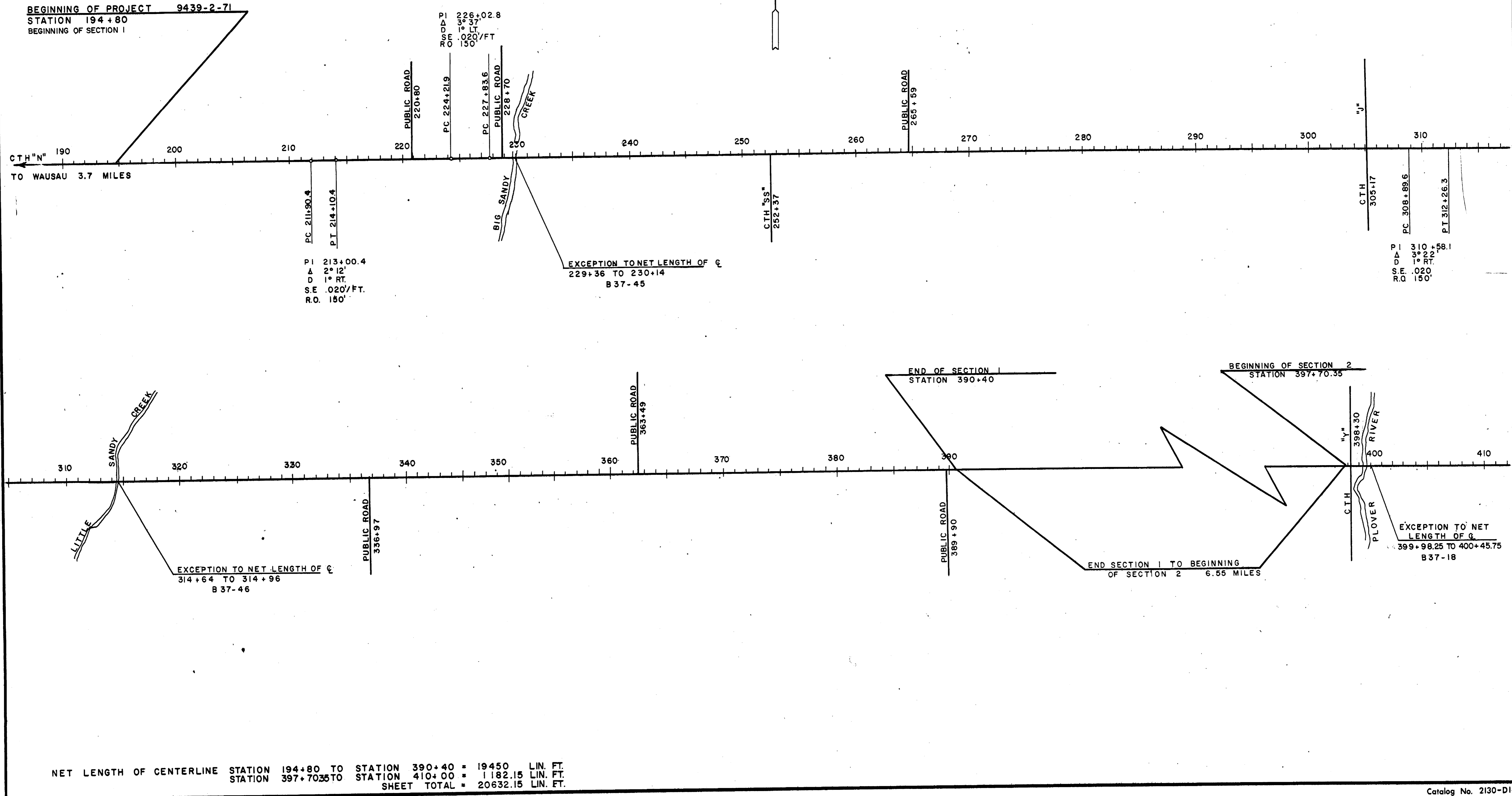
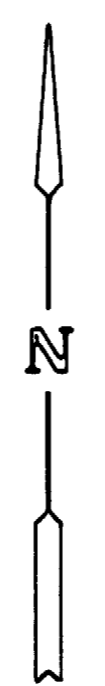
Designer COUNTY District Checker N.L.D.
 Designer COUNTY C.O. Checker L.L.W.

Correct: _____
 Date 2/17/76 _____ District Engineer
 Recommended for Approval: _____
 Date 4/20/76 _____ Chief of Facilities Development
 Approved: _____
 Date 4/20/76 _____ State Highway Engineer

U.S. DEPARTMENT OF TRANSPORTATION
 FEDERAL HIGHWAY ADMINISTRATION
 REGION 9, WISCONSIN DIVISION

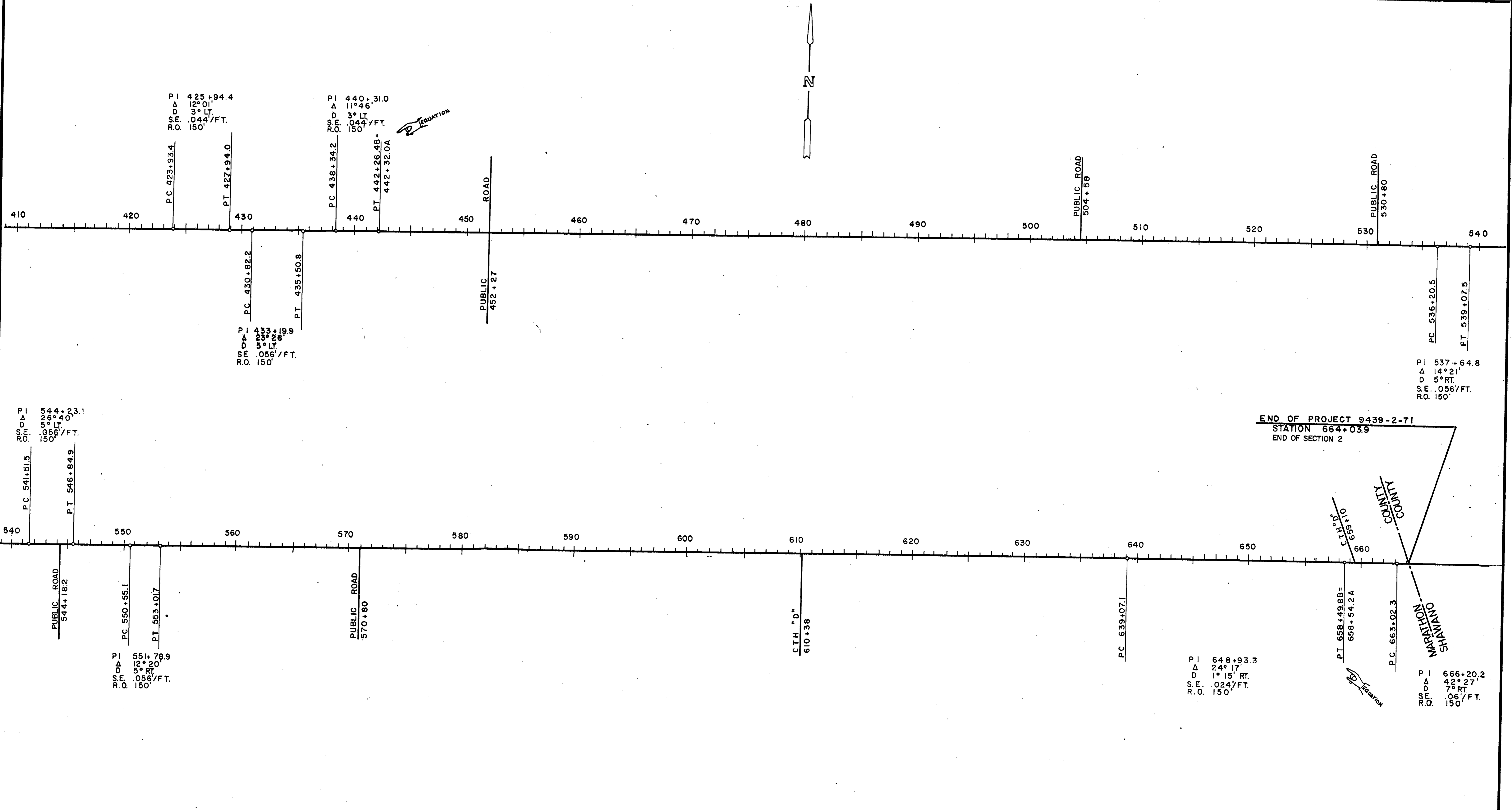
Approved: _____
 Date _____
 Division Engineer

STATE PROJECT NUMBER	SHEET NO.
9439-2-71	5



NET LENGTH OF CENTERLINE STATION 194+80 TO STATION 390+40 = 19450 LIN. FT.
 STATION 397+70.35 TO STATION 410+00 = 1182.15 LIN. FT.
 SHEET TOTAL = 20632.15 LIN. FT.

STATE PROJECT NUMBER	SHEET NO.
9439 - 2 - 71	51



PI 425+94.4
 Δ 12° 01'
 D 3° LT
 S.E. .044'/FT.
 R.O. 150'

PI 440+31.0
 Δ 11° 46'
 D 3° LT
 S.E. .044'/FT.
 R.O. 150'

PI 433+19.9
 Δ 23° 26'
 D 5° LT
 S.E. .056'/FT.
 R.O. 150'

PI 537+64.8
 Δ 14° 21'
 D 5° RT
 S.E. .056'/FT.
 R.O. 150'

PI 544+23.1
 Δ 20° 04'
 D 5° LT
 S.E. .056'/FT.
 R.O. 150'

PI 551+78.9
 Δ 12° 20'
 D 5° RT
 S.E. .056'/FT.
 R.O. 150'

PI 648+93.3
 Δ 24° 17'
 D 1° 15' RT
 S.E. .024'/FT.
 R.O. 150'

PI 666+20.2
 Δ 42° 27'
 D 7° RT
 S.E. .06'/FT.
 R.O. 150'

NET LENGTH OF CENTERLINE STATION 410+00 TO STATION 664+03.9 = 25393.9 LIN. FT.