

As Built Plan MPN 10/29/69  
376-12.0-12.8

Sheet Number	Total Sheets
1	13

Index of Sheets

- Sheet No. 1 Title
- Sheet No. 2-2.5 Typical Cross Sections
- Sheet No. 3 Estimate of Quantities
- Sheet No. 3A Miscellaneous Quantities
- Sheet No. Right of Way Plat
- Sheet No. 4-7 Plan and Profile Sta. 1+32.00 to Sta. 21+32.00
- Sheet No. 8-8.7 Standard Details
- Sheet No. Drainage Structures
- Sheet No. 9-13 Cross Sections



STATE OF WISCONSIN  
DEPARTMENT OF TRANSPORTATION  
DIVISION OF HIGHWAYS

PLAN AND PROFILE OF PROPOSED  
TOWN LINE ROAD, CITY OF WAUSAU  
C. T. H. N  
MARATHON COUNTY

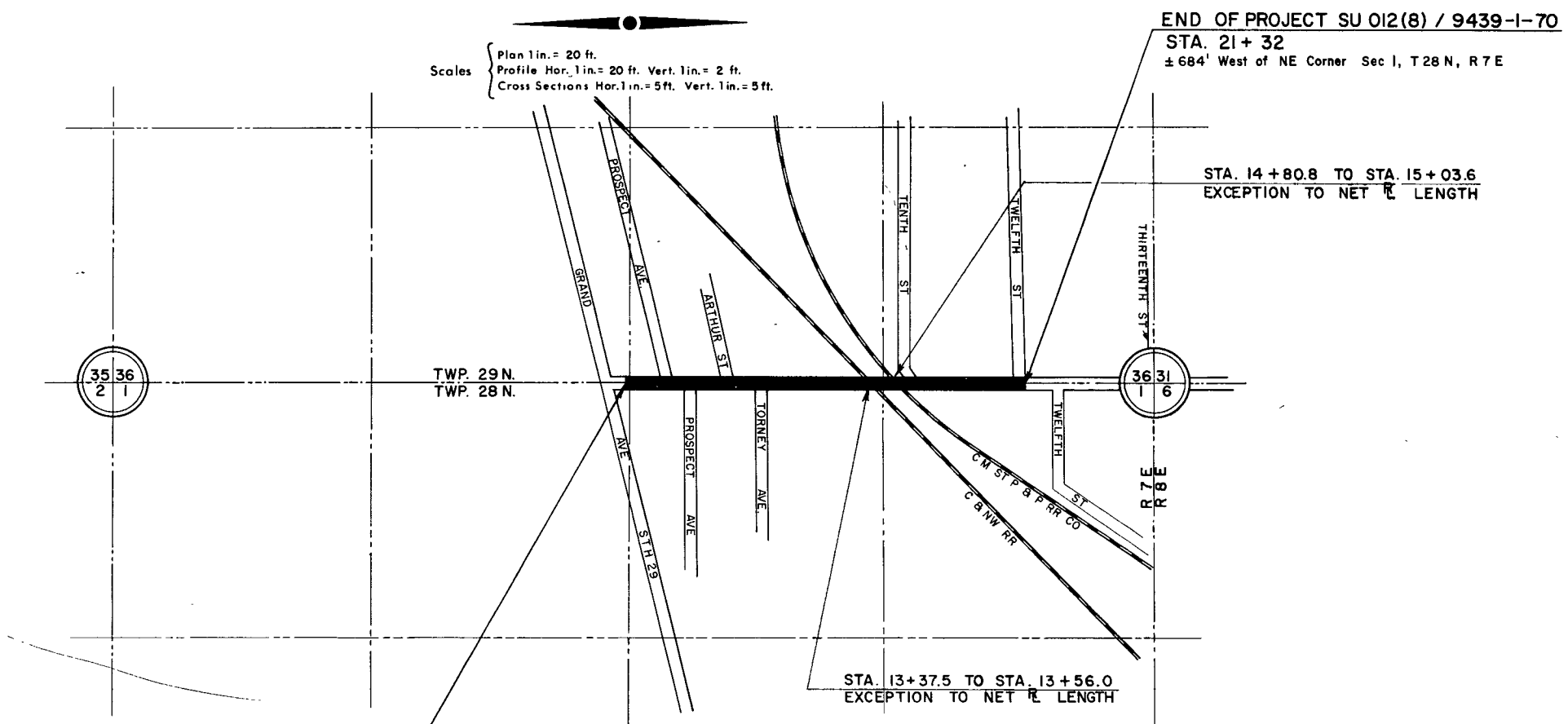
PROJECT IDENTIFICATION NUMBER	FEDERAL PROJECT DESIGNATION
9439-1-70	SU 012 (8)

Design Designation

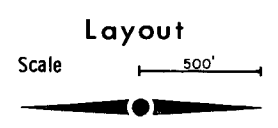
- A. D. T. 1967 - 2800 - 3200
- A. D. T. 1990 - 6000 - 7000
- D. H. V. - 400 - 800
- D. - 55 - 45
- T. - 7% A. D. T.
- V. - 25 M. P. H.

Conventional Signs

- |                           |       |                               |                  |
|---------------------------|-------|-------------------------------|------------------|
| State Line                | ----- | Culverts in Place             | -----            |
| County Line               | ----- | Culverts Required             | -----            |
| Township or Range Line    | ----- | Drop Inlet                    | -----            |
| Section Line              | ----- | Power Pole                    | -----            |
| New Right of Way Line     | ----- | Telephone or Telegraph Pole   | -----            |
| Present Right of Way Line | ----- | Right of Way Markers          | -----            |
| Wire Fence                | ----- | Reference Stake for Hubs Only | -----            |
| Woven                     | ----- | Marsh                         | -----            |
| Barbed                    | ----- | Hedge                         | -----            |
| Lot Line                  | ----- | Trees                         | -----            |
| Corporate or City Limits  | ----- | Ground Elevation              | Datum Line 73.9  |
| Property Line             | ----- | Grade Elevation               | Datum Line 76.16 |
| Traveled Way or P. E.     | ----- |                               |                  |
| Railroads                 | ----- |                               |                  |
| Base or Survey Line       | ----- |                               |                  |



BEGINNING OF PROJECT SU 012 (8) / 9439-1-70  
STA. 1+32  
132' East of Intersection of Grand Ave. & Town Line Rd.



Total Net Length of Centerline = 0.371 Mi. URBAN

END OF PROJECT SU 012 (8) / 9439-1-70  
STA. 21+32  
± 684' West of NE Corner Sec 1, T28 N, R7 E

STA. 14+80.8 TO STA. 15+03.6  
EXCEPTION TO NET LENGTH

STA. 13+37.5 TO STA. 13+56.0  
EXCEPTION TO NET LENGTH

APPROVED FOR:  
CITY OF WAUSAU

5/7/69 *John L. Kaminberg*  
DATE

STATE OF WISCONSIN  
DEPARTMENT OF TRANSPORTATION  
DIVISION OF HIGHWAYS

Surveyor: City of Wausau, Note Book 4, 5, 8, 10, 12  
Computer: City of Wausau, M. O. Checker: *L. L. L.*  
District Checker: R. W. V. Correct

Correct:

Date: 4/6/68 *K. L. Purdick*  
Recommended for Approval: District Engineer

Date: 4/14/68 *E. J. Byskit*  
Approved: Chief Design Engineer

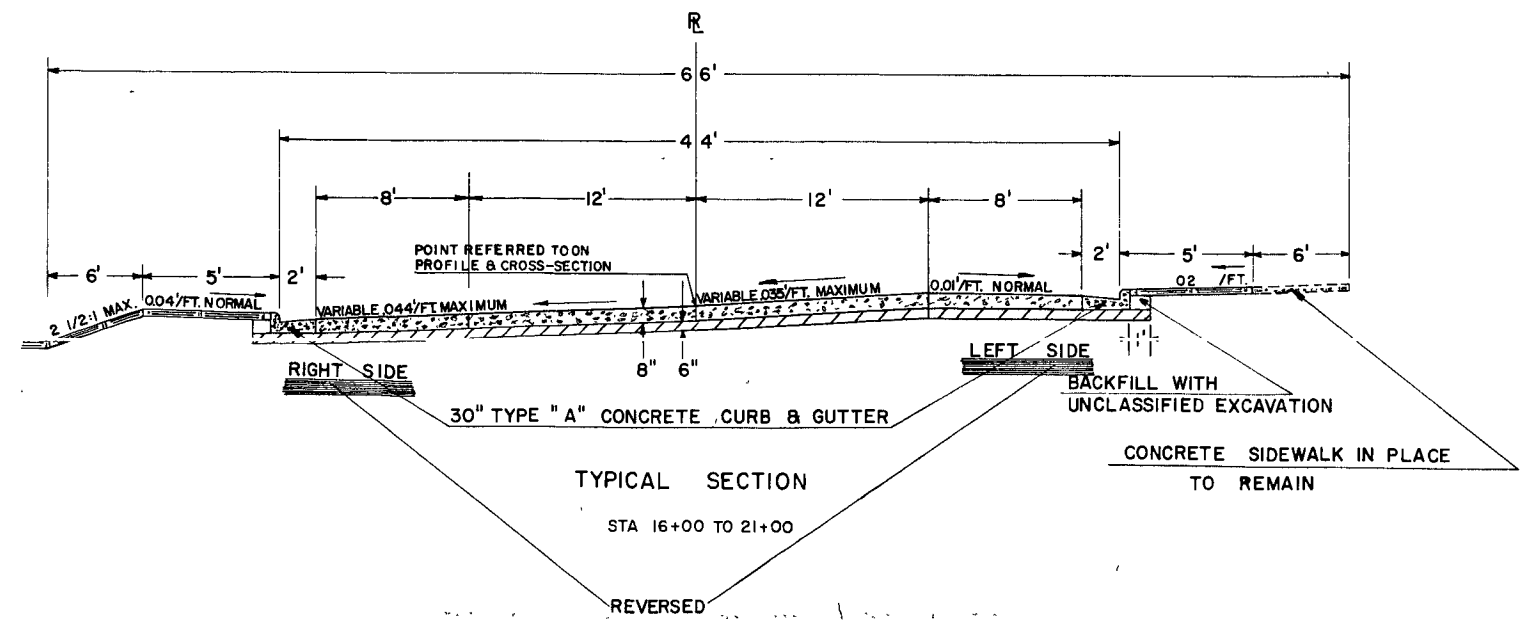
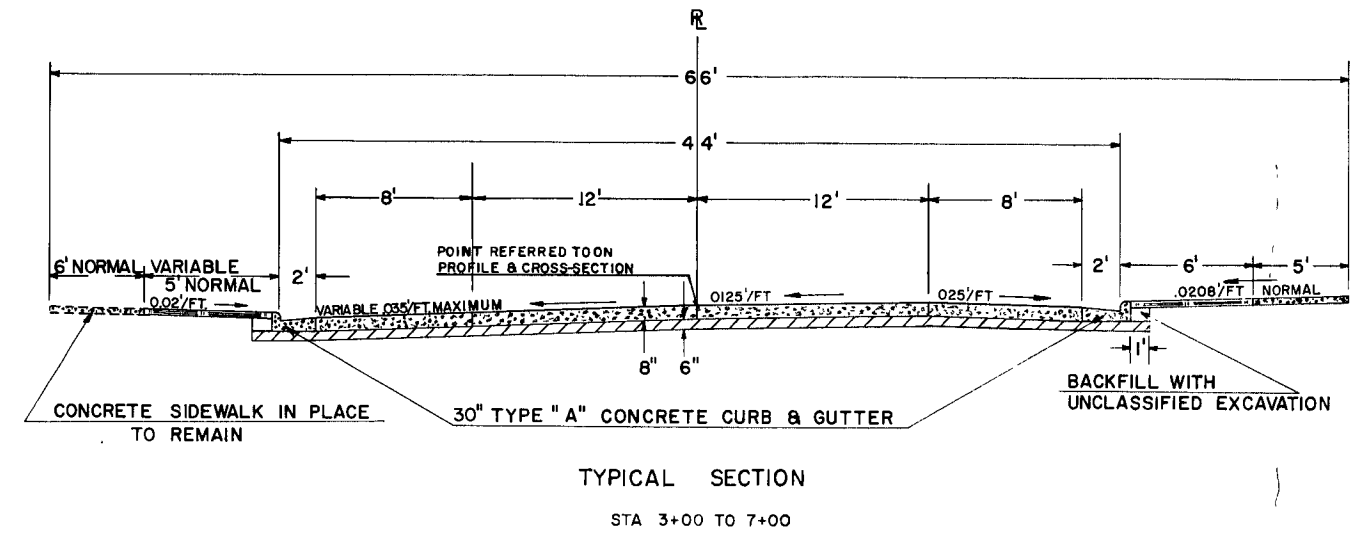
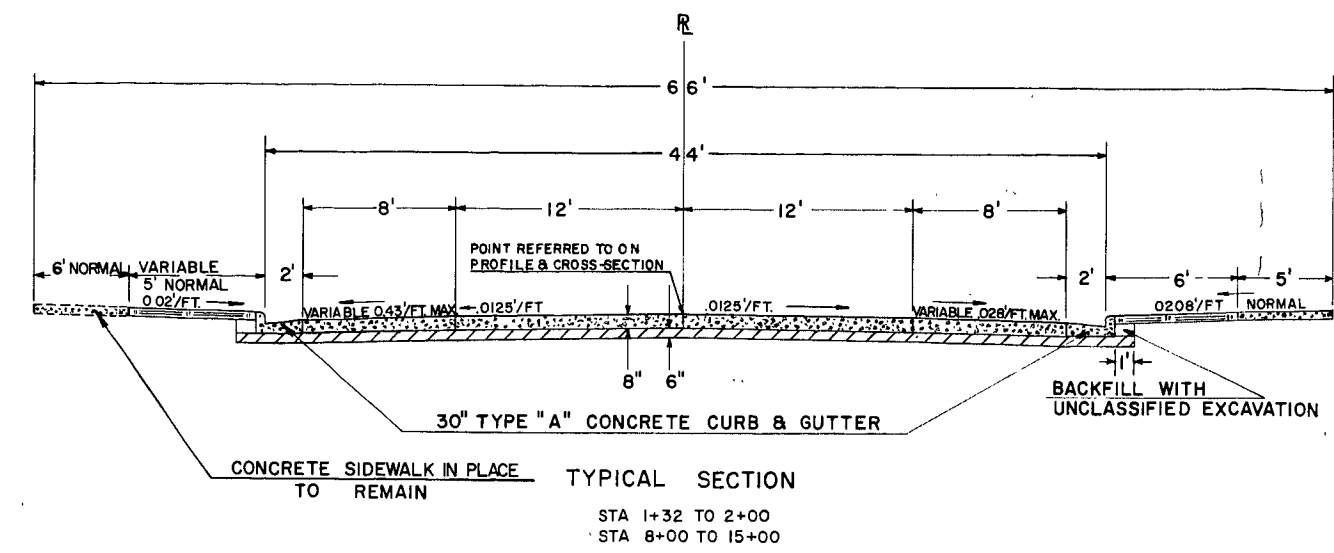
Date: 4/26/68 *H. J. Kaminberg*  
State Highway Engineer

U.S. DEPARTMENT OF TRANSPORTATION  
FEDERAL HIGHWAY ADMINISTRATION  
BUREAU OF PUBLIC ROADS  
WISCONSIN DIVISION

Approved:

Date: \_\_\_\_\_  
Division Engineer

PROJECT I.D. 9439-1-70	SHEET NUMBER 2	TOTAL SHEETS 13
FEDERAL PROJECT DESIGNATION SU 012 (8)		
TYPICAL CROSS SECTION TOWN LINE ROAD C.T.H. N		

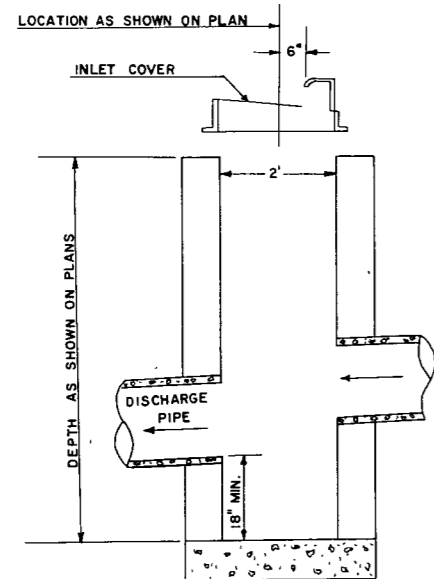


LEGEND

- P.C. CONCRETE PAVEMENT
- CRUSHED AGGREGATE BASE COURSE
- 3" TOPSOIL (SEED & FERTILIZER)

UTILITIES		CHK'D	TYPICAL STREET SECTIONS				
SANITARY			TOWN LINE ROAD GRAND AVE. TO 12TH ST.				
STORM			<b>ENGINEERING DEPT.</b> CITY OF WAUSAU, WIS.				
WATER							
TELEPHONE			FIELD BOOK	SURVEYED	BY	DATE	
ELECTRICAL			NUMBER	DRAWN	PRELIMINARY	J.F.R.	16 JULY 68
GAS			PAGE	CHECKED	FINAL	J.F.R.	17 JULY 68
HEATING				APPROVED			
FIRE ALARM				REVISIONS			
LIGHTING							
BENCH MARKS							
MONUMENTS							
SHEET NO. --		TOTAL SHEETS --					

PROJECT I.D. 9439-1-70	SHEET NUMBER 21	TOTAL SHEETS 13
FEDERAL PROJECT DESIGNATION SU 012 (8)		
CONSTRUCTION DETAILS		



NOTE: DETAILS NOT SHOWN SHALL CONFORM TO STANDARD INLET PLATE 5-352

**TYPE 3 INLET (MODIFIED)**  
(MODIFIED WITH SUMP)

**GENERAL NOTES:**

TRANSVERSE JOINTS SHOWN ON THE PLAN MAY BE REVISED WITH APPROVAL BY THE ENGINEER

WHEN THE QUANTITY OF THE ITEMS OF BASE OR SURFACE COURSE IS MEASURED FOR PAYMENT BY THE TON, THE DEPTH OR THICKNESS OF THE COURSE SHOWN ON THE PLANS IS APPROXIMATE AND THE ACTUAL THICKNESS WILL DEPEND UPON THE DISTRIBUTION OF THE MATERIALS AS DIRECTED BY THE ENGINEER.

TOPSOIL, WHERE REQUIRED, TO BE PLACED TO A DEPTH OF 3" AT THE TIME OF PLACING. TOPSOIL TO BE FLUSH WITH TOP OF ADJACENT CURBS OR SIDEWALKS.

SECTIONS AS SHOWN ON THE CROSS-SECTION SHEETS INCLUDE THE THICKNESS OF TOPSOIL WHERE REQUIRED

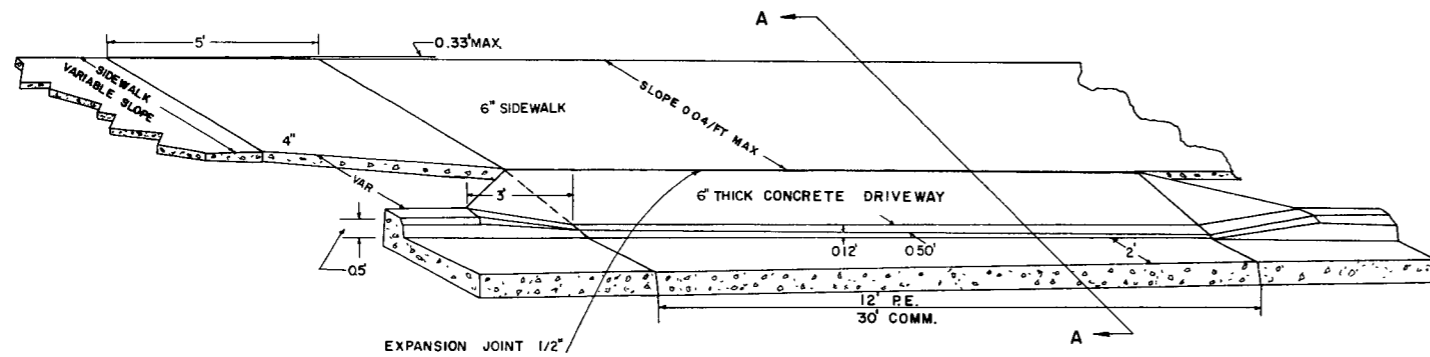
NO TREES OR SHRUBS ARE TO BE REMOVED UNTIL THEY HAVE FIRST BEEN INDICATED FOR REMOVAL BY THE ENGINEER.

THE EXACT LOCATION OF PRIVATE ENTRANCES TO BE DETERMINED IN THE FIELD BY THE ENGINEER

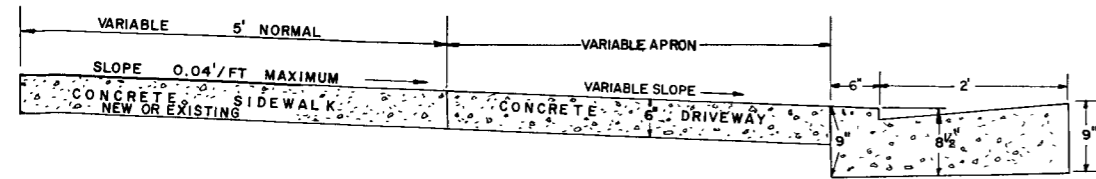
THE ENDS OF EACH RUN OF CONDUIT SHALL BE THREADED AND CAPPED.

**APPLICABLE STANDARD DETAIL DRAWINGS**

- 2-2.1.11 RAILROAD APPROACH DETAILS CONCRETE PAVEMENT
- 3-1.1.7 CONCRETE CURB, GUTTER, COMBINATION CURB & GUTTER
- 4-4.4.8 LONGITUDINAL JOINTS - CONC PAVEMENT SURFACE DRAIN
- 5-3.4.8 CATCH BASIN & INLET COVERS
- 5-3.5.2 INLETS
  
- 7-4.1.5 CONSTRUCTION BARRICADE
- 8-5.1.6 METAL CONDUIT & FIBER CONDUIT
  
- 12-1.1.3 LAND MARK REFERENCE MONUMENTS



**TYPICAL ENTRANCE DETAIL**  
NOTE: USE 7" THICK CONCRETE DRIVEWAY AT STATION 15+88, 17+27 & 18+32, 13+04, 11+90 ON THE RIGHT AND 14+00 ON THE LEFT.



**SECTION A-A**

UTILITIES	CHK'D	<b>MISCELLANEOUS CONSTRUCTION DETAILS</b>				
SANITARY						
STORM						
WATER						
TELEPHONE						
ELECTRICAL						
GAS						
HEATING						
FIRE ALARM						
LIGHTING						
BENCH MARKS		<b>ENGINEERING DEPT. CITY of WAUSAU, WIS.</b>				
MONUMENTS						
FIELD BOOK NUMBER				SURVEYED	BY	DATE
PAGE				DRAWN	PRELIMINARY	
		CHECKED	FINAL			
		APPROVED				
		REVISIONS				
SHEET NO. --		TOTAL SHEETS --				

PROJECT ID	9439-1-70	SHEET NUMBER	TOTAL SHEETS
FEDERAL PROJECT DESIGNATION	SU 012 (8)	2.2	13
TRANSVERSE PAVEMENT JOINT DETAILS			

**GENERAL NOTES**

Details of construction not shown on this drawing shall conform to the pertinent requirements of the Standard Specifications and the applicable Special Provisions.

**ALTERNATE DESIGNS**

Alternate designs for load transfer dowels at expansion joints and appurtenances other than shown hereon may be used upon written approval of the Engineer.

**CONTRACTION JOINTS**

Contraction joints shall be installed at 20' ( $\pm 2'$ ) spacing from adjacent contraction or expansion joints, except that lesser spacings shall be

1. At locations or spacing indicated on the Plans.
2. As extensions of transverse joints or cracks in abutting pavement lanes.
3. At locations designated by the Engineer where there are manholes or other fixtures in the pavement.

**CONSTRUCTION JOINTS**

Construction joints shall be installed as necessary, except that a construction joint shall not be less than 10 feet from the nearest contraction or expansion joint.

Deformed bars shall be spaced at 12" C:C and 6" from edge of pavement.

Deformed bars may be inserted after the concrete has been poured.

**EXPANSION JOINTS**

Expansion joints are required only at structure approaches and/or where shown on the Plans. The locations may be shifted to avoid stationary fixtures in the pavement.

Expansion joint filler shall be secured with sufficient number of steel pins to preclude any horizontal movement during the placing of concrete.

One end of each dowel bar shall be sawed and free of all burrs or protruding edges.

Metal dowel socket (CAP), 1-1/16" or 1-5/16" Dia., 24 Gauge, closed on one end, shall be placed on the sawed end of each dowel bar as required for proper pavement expansion.

Dowel bars shall be painted with a rust inhibitive paint and coated for at least 2/3 their length with liquid asphalt MC 70 or MC 250, or other approved lubricant, to prevent bonding with concrete. The asphalt coating shall be applied to the sawed and capped end of the dowel bar and shall be sufficiently dry so that it will not be removed by the handling and placing of the dowel assembly.

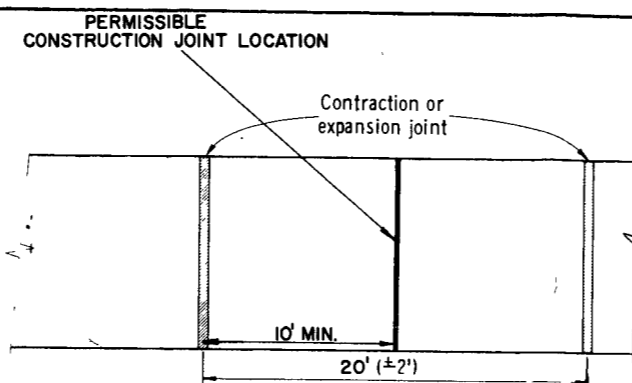
Dowel bars shall be spaced at 12" C:C and 6" from edge of pavement.

**Dowel bar dimensions:**

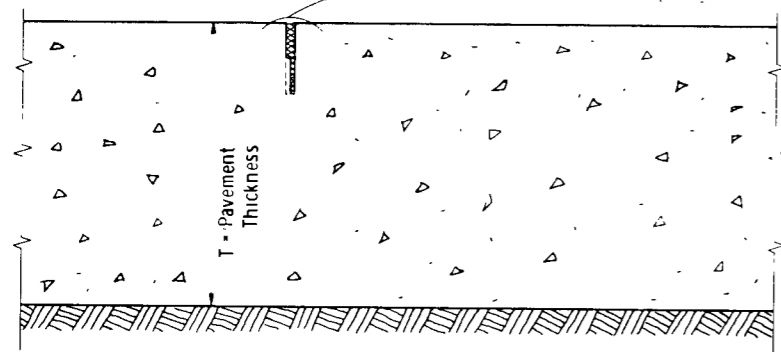
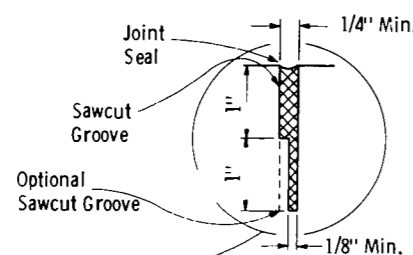
- For 7-Inch P.C. Pavement = 1"  $\varnothing$  x 18"
- For 8-Inch P.C. Pavement = 1"  $\varnothing$  x 18"
- For 9-Inch P.C. Pavement = 1 1/4"  $\varnothing$  x 18"

**SEALING JOINTS**

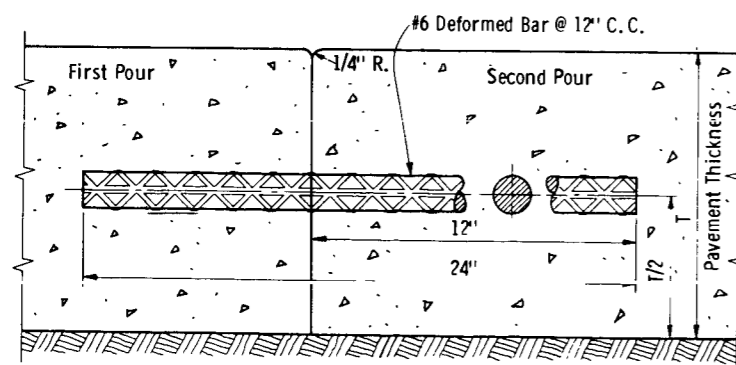
Joints shall be sealed as shown.



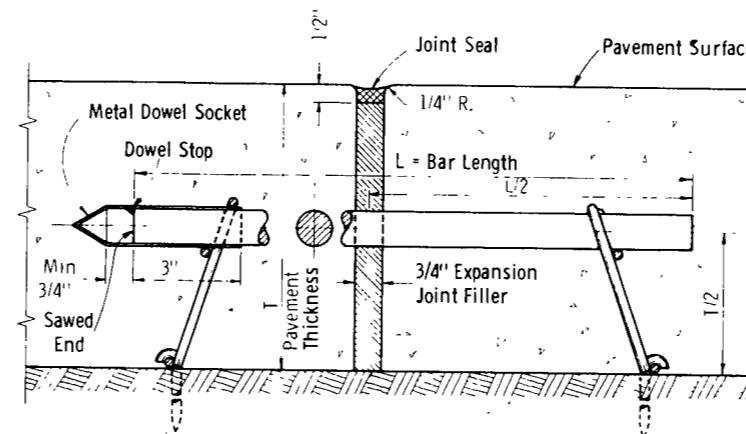
**SCHMATIC SHOWING JOINT LOCATIONS**



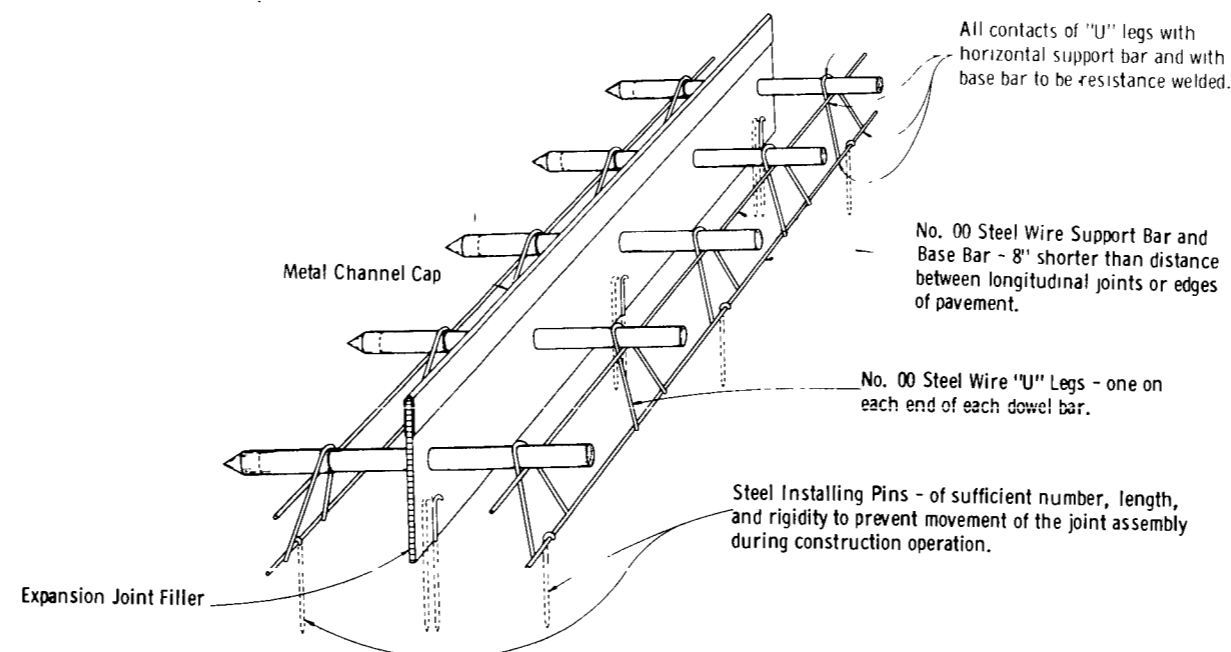
**CONTRACTION JOINT**



**CONSTRUCTION JOINT**



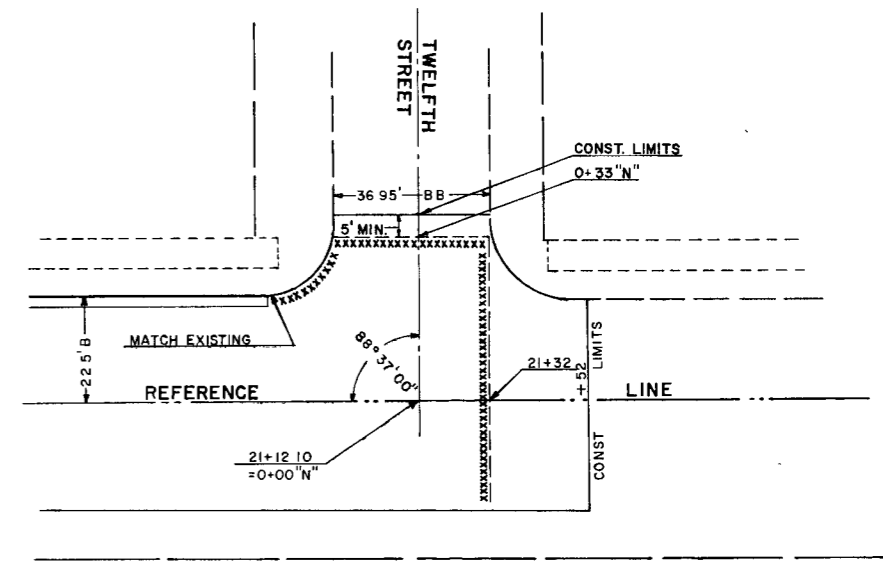
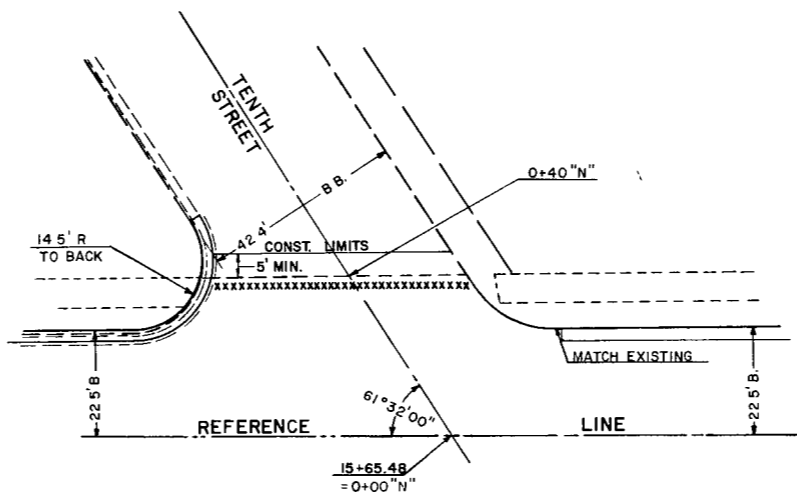
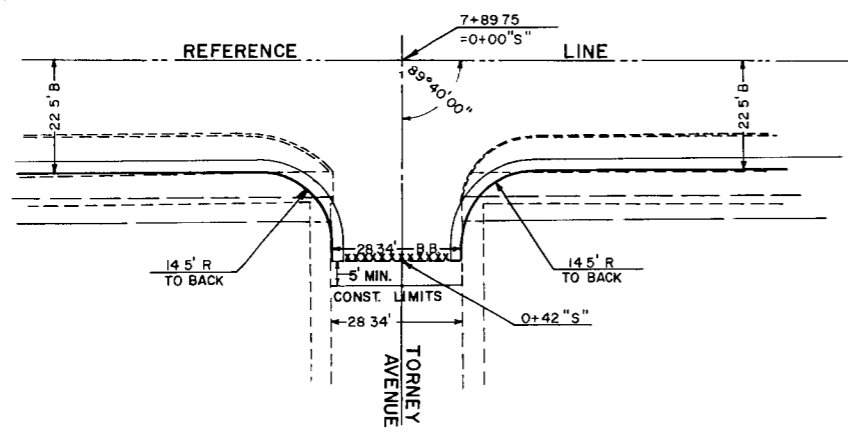
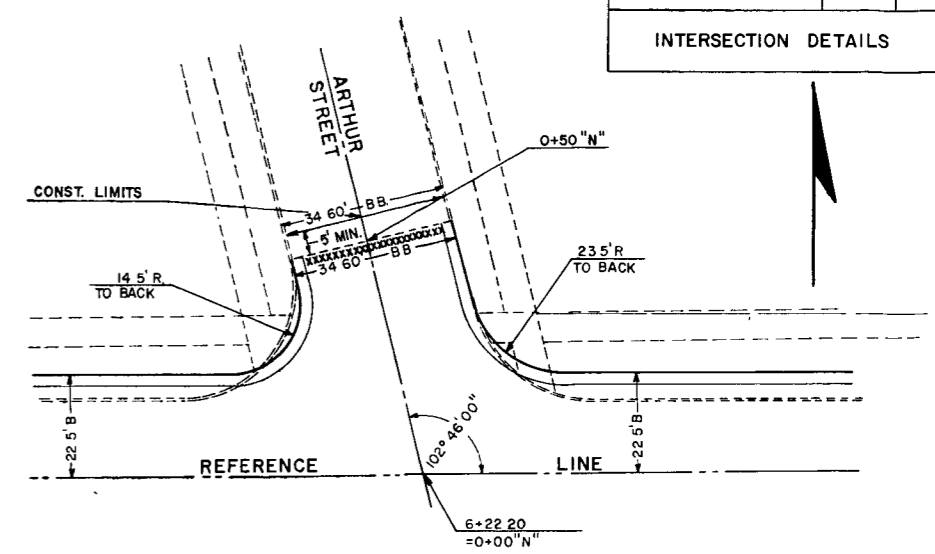
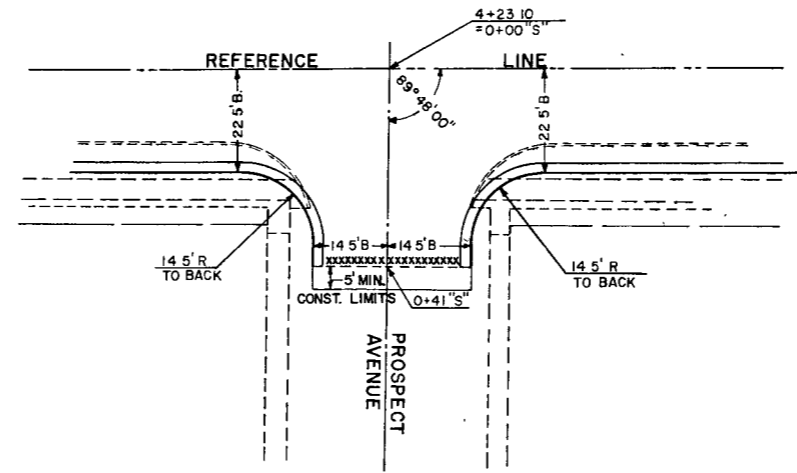
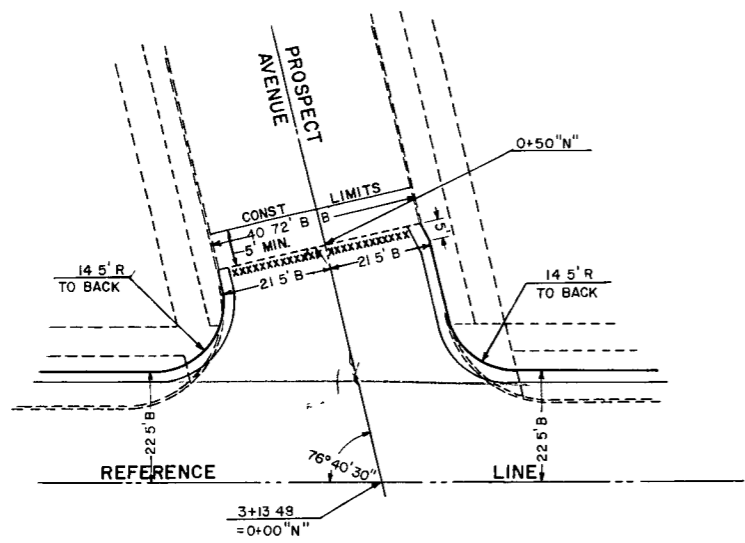
**EXPANSION JOINT**



**INSTALLING DEVICE FOR LOAD TRANSFER DOWELS AND EXPANSION JOINT ASSEMBLY**

DETAILS FOR TRANSVERSE JOINTS IN NON-REINFORCED CONCRETE PAVEMENT

PROJECT I.D. 9439-1-70	SHEET NUMBER 23	TOTAL SHEETS 13
FEDERAL PROJECT DESIGNATION SU 012 (8)		
INTERSECTION DETAILS		

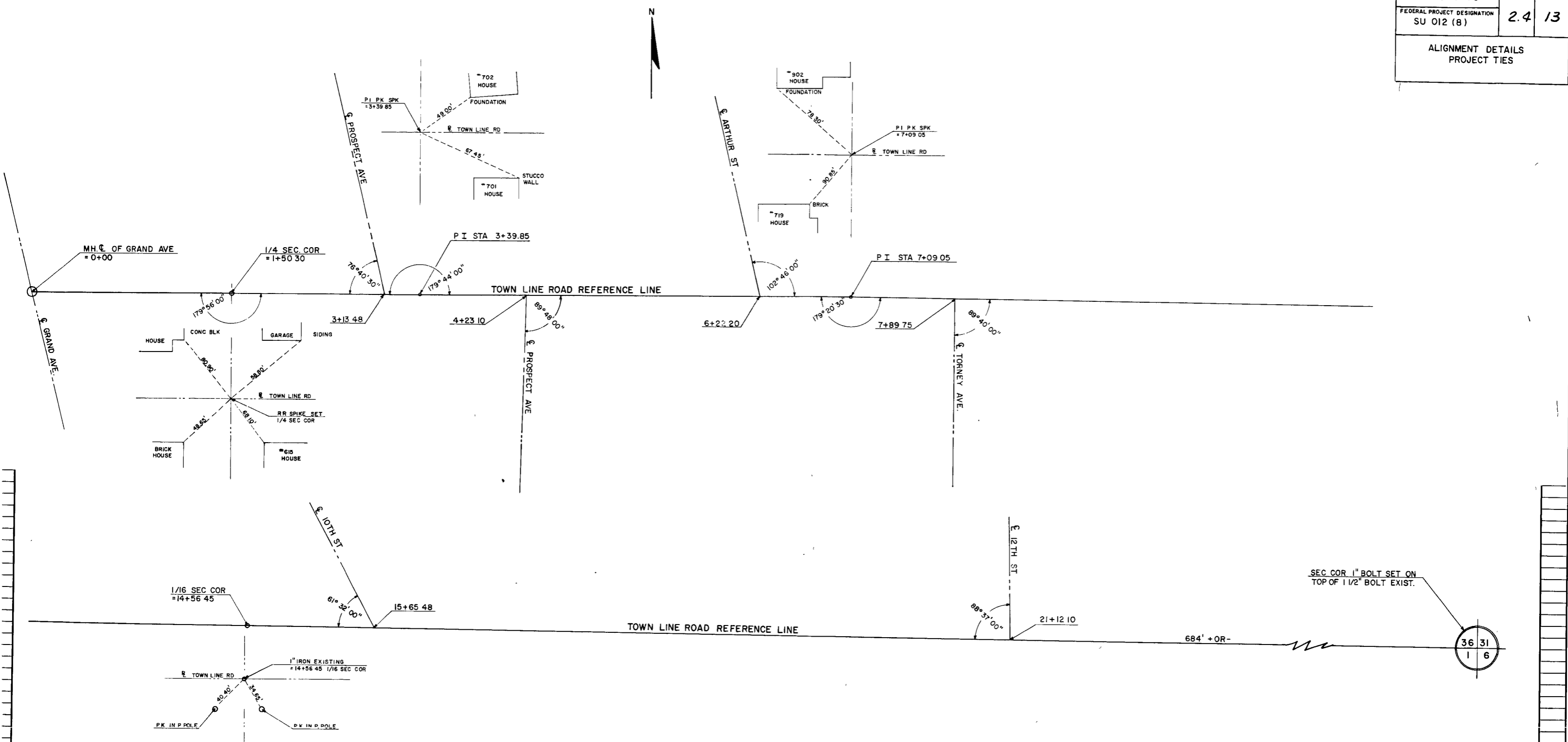


NOTE: SIDE STREET INTERSECTIONS SHALL CONSIST OF 8" CONCRETE PAVEMENT OVERLYING 6" CRUSHED AGGREGATE BASE COURSE. THE APPROACH AREA BETWEEN THE CONSTRUCTION LIMITS AND THE CONCRETE PAVEMENT LIMITS SHALL CONSIST OF A 3" BITUMINOUS SURFACE ON A 8" CRUSHED AGGREGATE BASE COURSE.

LEGEND  
XXXXXXXXXX CONCRETE PAVING LIMITS

UTILITIES		CHK'D	INTERSECTION DETAILS				
SANITARY			TOWN LINE ROAD				
STORM			GRAND AVE. TO 12 TH ST.				
WATER			<b>ENGINEERING DEPT.</b>				
TELEPHONE							
ELECTRICAL			<b>CITY OF WAUSAU, WIS.</b>				
GAS							
HEATING			FIELD BOOK	SURVEYED	BY	DATE	
FIRE ALARM			NUMBER	DRAWN	PRELIMINARY	J.F.R.	10 JULY 68
LIGHTING				CHECKED	FINAL	J.F.R.	15 JULY 68
BENCH MARKS			PAGE	APPROVED			
MONUMENTS				REVISIONS			
SHEET NO ..		TOTAL SHEETS ..					

PROJECT I.D. 9439-1-70	SHEET NUMBER	TOTAL SHEETS
FEDERAL PROJECT DESIGNATION SU 012 (8)	2.4	13
ALIGNMENT DETAILS PROJECT TIES		

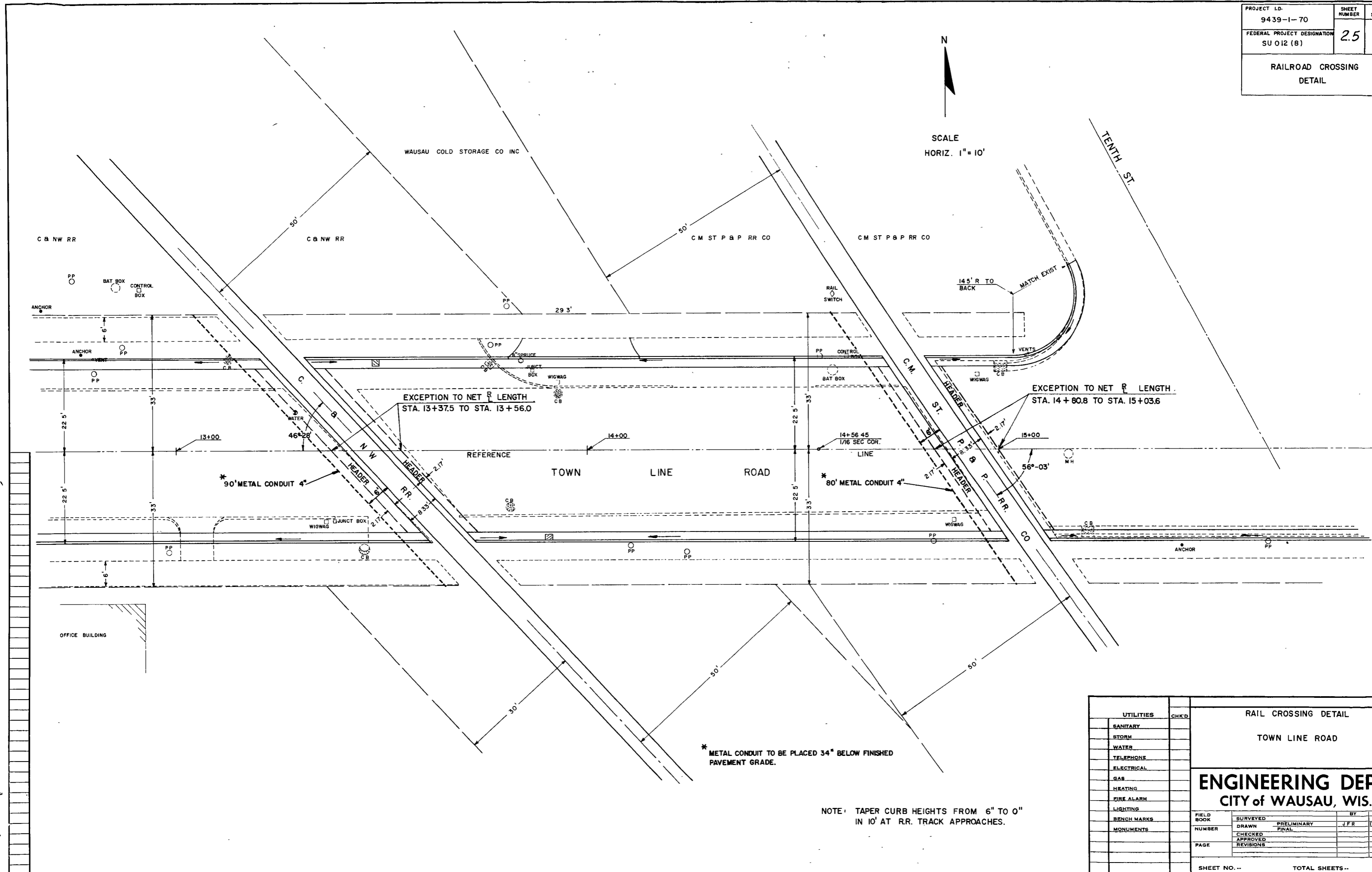


SEC COR 1" BOLT SET ON  
TOP OF 1/2" BOLT EXIST.

36 31  
1 6

UTILITIES		CHK'D	ALIGNMENT DETAILS AND TIES			
SANITARY			TOWN LINE ROAD			
STORM			GRAND AVE. TO 13 TH ST			
WATER			<b>ENGINEERING DEPT.</b>			
TELEPHONE			<b>CITY OF WAUSAU, WIS.</b>			
ELECTRICAL			LOOSE LEAF			
GAS			13-2-64			
HEATING			NUMBER			
FIRE ALARM			PAGE			
LIGHTING			SHEET NO. ... TOTAL SHEETS ...			
BENCH MARKS			SURVEYED			
MONUMENTS			DRAWN			
			CHECKED			
			APPROVED			
			REVISIONS			

PROJECT I.D. 9439-1-70	SHEET NUMBER 25	TOTAL SHEETS 13
FEDERAL PROJECT DESIGNATION SU 012 (8)		
RAILROAD CROSSING DETAIL		



N  
SCALE  
HORIZ. 1" = 10'

WAUSAU COLD STORAGE CO INC

C & N W RR

C & N W RR

C M ST P & P RR CO

C M ST P & P RR CO

TENTH ST.

EXCEPTION TO NET R LENGTH  
STA. 13+37.5 TO STA. 13+56.0

EXCEPTION TO NET R LENGTH  
STA. 14+80.8 TO STA. 15+03.6

REFERENCE  
TOWN LINE ROAD

\* 90' METAL CONDUIT 4"

\* 80' METAL CONDUIT 4"

\* METAL CONDUIT TO BE PLACED 34" BELOW FINISHED PAVEMENT GRADE.

NOTE: TAPER CURB HEIGHTS FROM 6" TO 0" IN 10' AT R.R. TRACK APPROACHES.

OFFICE BUILDING

UTILITIES	CHK'D	RAIL CROSSING DETAIL	
SANITARY		TOWN LINE ROAD	
STORM		<b>ENGINEERING DEPT.</b>	
WATER		<b>CITY OF WAUSAU, WIS.</b>	
TELEPHONE		FIELD BOOK	SURVEYED
ELECTRICAL		NUMBER	DRAWN
GAS		PAGE	CHECKED
HEATING			APPROVED
FIRE ALARM			REVISIONS
LIGHTING			
BENCH MARKS			
MONUMENTS			
SHEET NO. --		TOTAL SHEETS --	



DETAIL SUMMARY SHEET OF MISCELLANEOUS QUANTITIES

PROJECT SU 012(8)

\* NON-PARTICIPATING

3A-13

9439-1-70

CLEARING & GRUBBING

STATION	LOCATION	CLEARING IN.DIA.	GRUBBING IN.DIA.
1+82	19R	17"	17"
2+02	18R	16"	16"
2+16	17R	12"	12"
2+33	17R	18"	18"
2+48	18R	16"	16"
3+51	21'L	19"	19"
3+77	23'L	17"	17"
4+02	21'L	17"	17"
4+34	20'L	18"	18"
4+96	20R	24"	24"
5+25	20R	23"	23"
5+43	20R	18"	18"
5+81	19R	16"	16"
6+02	20R	—	24"
6+33	20R	—	35"
7+39	24R	—	12"
7+61	25L	—	12"
8+89	22R	18"	18"
9+07	21R	20"	20"
10+68	23L	16"	16"
17+64	27L	12"	12"
20+00	23L	20"	20"

REMOVING CONCRETE SIDEWALK

STATION	TO	STATION	LOCATION	SQ. YD.
1+37		4+02	R	177
		PROSPECT AVE. INTERSECTION	L	30
		PROSPECT AVE. INTERSECTION	R	6
4+37		7+74	R	225
		ARTHUR AVE. INTERSECTION	L	20
		TORNEY AVE. INTERSECTION	R	5
8+00		11+90	R	255

REMOVING CATCH BASINS

STATION	LOCATION	NUMBER
2+83	20'L	1
3+32	20'L	1
3+90	19'R	1
4+48	18'R	1
5+90	25'L	1
6+38	14'R	1
7+67	18'R	1
8+07	20'R	1
8+98	15'L	1
13+12	24'L	1
13+45	24'R	1
13+78	22'L	1
13+80	14'R	1
13+92	14'L	1
15+32	20'R	1
17+07	23'L	1
18+08	19'R	1

REMOVING INLETS

STATION	LOCATION	NUMBER
2+70	22'L	1
3+35	21'L	1
5+79	27 R	1

CRUSHED AGGREGATE BASE COURSE

STATION	LOCATION	TONS
1+32 TO 21+32	MAINLINE	3,480
3+09	INTERSECTION ON N.PROSPECT	64
6+10	INTERSECTION ON ARTHUR	50
4+20	INTERSECTION S.PROSPECT	36
7+85	INTERSECTION TORNEY	28
15+50	INTERSECTION 10TH ST.	36
21+16	INTERSECTION 12TH ST	27

CONCRETE PAVEMENT 8"

LOCATION	SQ. YD.
1+32 - 20+88	8,509
N. PROSPECT Intersection	187
S. PROSPECT Intersection	107
ARTHUR Intersection	151
TORNEY Intersection	85
10th AVE Intersection	107
12th AVE Intersection	80 HES
20+88 - 21+32	196 HES

RECONSTRUCTING INLETS

STATION	LOCATION	EACH	TYPE 'H' COVER
14+95	LT.	1	1
15+85	LT.	1	1

\* CONCRETE SIDEWALK, 4 Inch

STATION	TO	STATION	LOCATION	SQ. FT.
1+37		4+00	RT.	1,085
4+35		7+70	RT.	1,550
8+02		11+80	RT.	1,400
		ARTHUR INTERSECTION		144
		N. PROSPECT INTERSECTION		246

\* CONCRETE SIDEWALK, 6 Inch

STATION	TO	STATION	LOCATION	SQ. FT.
1+76			RT.	60
1+93			RT.	60
3+05			RT.	60
3+40			RT.	60
4+80			RT.	60
5+95			RT.	60
7+08			RT.	60
8+65			RT.	60
9+30			RT.	60
9+48			RT.	60
10+30			RT.	60
10+45			RT.	60
11+00			RT.	60
11+25			RT.	150

CONCRETE CURB & GUTTER 30" INCH TYPE A

STATION	TO	STATION	LOCATION	LIN. FT.
1+22		2+84	L	170
H22		4+02	R	283
3+31		5+95	L	315
4+34		7+74	R	365
6+30		13+16	L	710
8+00		13+54	R	570
13+35		14+70	L	135
13+75		15+00	R	125
15+13		21+32	R	620
15+90		21+00	L	520
14+90		15+10	L	30



STORM SEWER

NO.	STATION	LOCATION	INLET TYPE	DEPTH	R.C.P CLASS III 12" LIN.FT.	R.C.P CLASS III 15" LIN.FT.
1	2+67	21.5'L	COVER 3-H	2.7'	22'	
2	2+84	42L	MOD. 3-H	4.0'	40'	
3	2+92	21.5'R	3-H	3.2'	48'	
4	3+28	35'L	3-H	3.2'	24'	
5	3+48	21.5'L	3-H	2.7'	22'	
6	4+02	38'R	3-H	2.8'	28'	
7	4+34	38'R	3-H	3.4'	20'	
8	4+29	21.5'L	3-H	3.2'	2'	
9	4+52	21.5'R	MOD. 3-H	5.6'		42'
10	5+78	21.5'L	3-H	3.3'	28'	
11	5+93	39'L	3-H	3.7'	22'	
12	6+10	21.5'R	3-H	2.2'	38'	
13	6+28	37'L	3-H	3.2'	26'	
14	6+47	21.5'L	3-H	2.7'	38'	
15	8+00	21.5'L	3-H	2.2'	14'	
16	7+98	38'R	3-H	2.6'	22'	
17	8+17	21.5'R	MOD. 3-H	4.9'	48'	
18	10+55	21.5'R	3-H	3.2'	10'	
19	10+50	21.5'L	3-H	3.2'	28'	
20	13+48	21.5'L	3-H	2.7'	50'	
21	13+90	21.5'R	3-H	2.4'	10'	
22	15+29	21.5'R	3-H	2.0'	46'	
23	18+07	21.5'R	3-H	2.2'	16'	
24	18+35	21.5'L	3-H	3.1'	32'	
25	20+90	21.5'R	3-H	2.2'	12'	

ADJUSTING - MANHOLE COVERS

STATION	LOCATION	EACH
3+15	C	1
3+20	16'L	1
4+20	C	1
4+25	18'L	1
6+07	18L	1
6+17	C	1
6+42	10R	1
7+85	19L	1
7+87	C	1
8+96	C	1
10+52	10R	1
11+70	C	1
13+93	10R	1
14+48	C	1
15+13	C	1
15+30	33'L	1
15+35	22'L	1
16+40	7'R	1
17+12	C	1
17+48	11'L	1
18+15	7'R	1
20+98	7'R	1
21+10	12 L	1

BITUMINOUS SURFACE COURSE

LOCATION	CU. YD.
INTERSECTION (Undistributed)	30

GRADING

STATION	TO	STATION	STA.
1+32		21+32	20

LANDMARK REFERENCE MONUMENTS

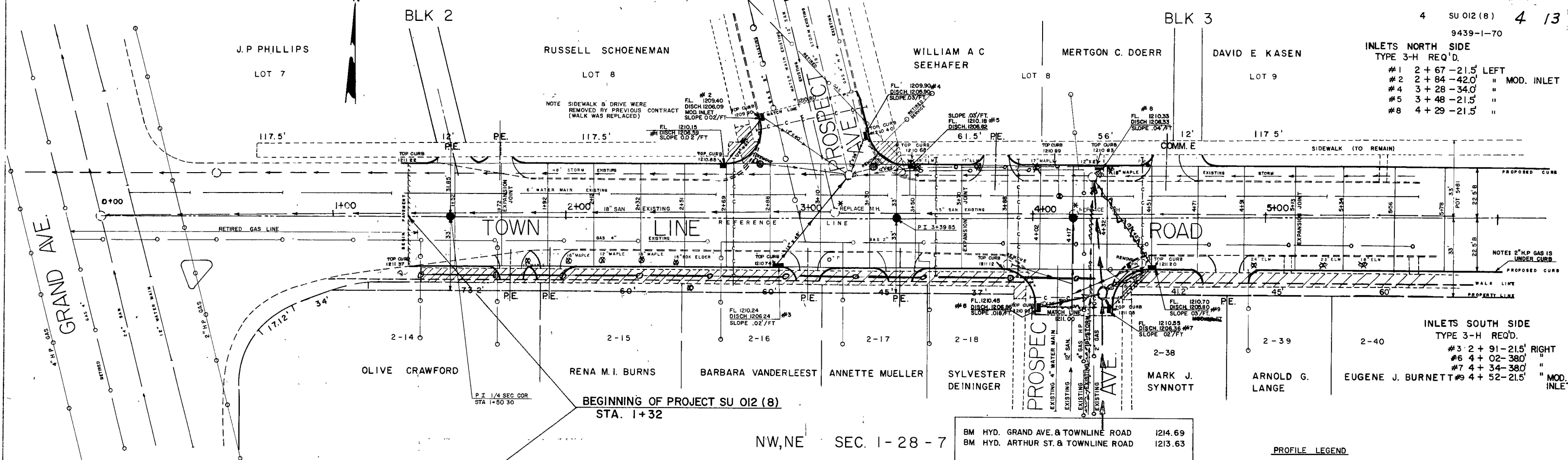
STATION	TYPE	EACH
14+56.45	1/16 COR.	1
14+50.30	1/4 COR.	1

CONCRETE HEADER

STATION	LOCATION	SQ. YD.
13+37	WEST C & N.W.R.R	15
13+52	EAST C & N.W.R.R	15
14+88	WEST C.M. ST.P.&P.R.R.	14
14+98	EAST C.M. ST.P.&P.R.R.	14

ELIZABETH SINGLE'S ADD.

4 SU 012 (8) 4 13  
9439-1-70



INLETS NORTH SIDE  
TYPE 3-H REQ'D.

#1	2 + 67 - 21.5	LEFT
#2	2 + 84 - 42.0	" MOD. INLET
#4	3 + 28 - 34.0	"
#5	3 + 48 - 21.5	"
#8	4 + 29 - 21.5	"

INLETS SOUTH SIDE  
TYPE 3-H REQ'D.

#3	2 + 91 - 21.5	RIGHT
#6	4 + 02 - 38.0	"
#7	4 + 34 - 38.0	"
#9	4 + 52 - 21.5	" MOD. INLET

BEGINNING OF PROJECT SU 012 (8)  
STA. 1+32

NW, NE SEC. 1-28-7

BM HYD. GRAND AVE. & TOWNLINE ROAD	1214.69
BM HYD. ARTHUR ST. & TOWNLINE ROAD	1213.63

GRADING YARDAGE SUMMARY  
STA 1+32-21+32  
UNC = 2,000 CU. YD.  
FILL = 375 CU. YD. shg. = 33%  
WASTE = 1,500 CU. YD.

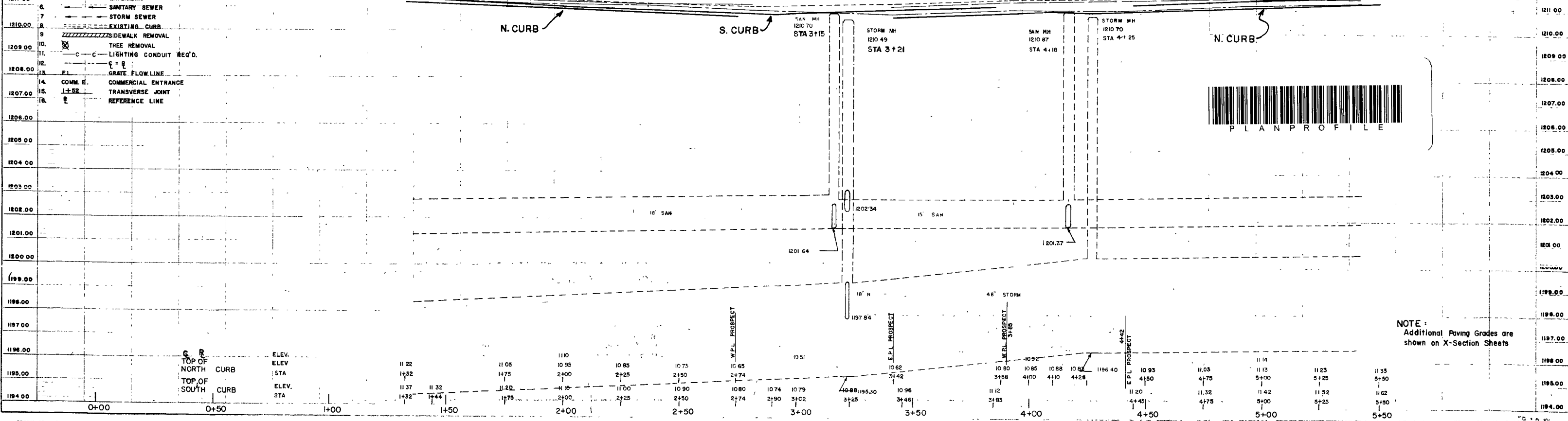
PROFILE LEGEND

- SPL SOUTH PROPERTY LINE
- NPL NORTH PROPERTY LINE
- E =

NET LENGTH OF R STA. 1+32 TO STA. 5+50 = 418.0 LIN. FT.

PLAN LEGEND

1	B	BACK OF CURB
2	W	WATER VALVE
3	M	MANHOLE IN PLACE
4	G	GAS MAIN
5	W	WATER MAIN
6	S	SANITARY SEWER
7	ST	STORM SEWER
8	---	EXISTING CURB
9	---	EXISTING SIDEWALK REMOVAL
10	T	TREE REMOVAL
11	L	LIGHTING CONDUIT REQ'D.
12	G	GRATE FLOW LINE
13	---	COMM. E.
14	---	COMM. E. ENTRANCE
15	J	TRANSVERSE JOINT
16	---	REFERENCE LINE



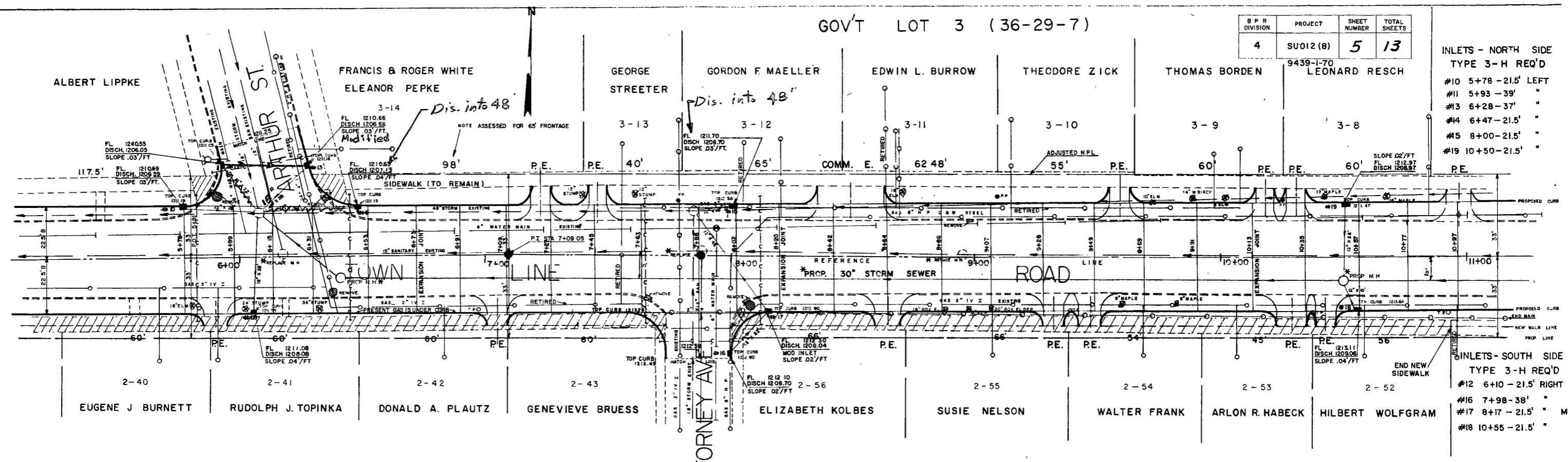
NOTE:  
Additional Paving Grades are shown on X-Section Sheets

GOV'T LOT 3 (36-29-7)

B.P.R. DIVISION	PROJECT	SHEET NUMBER	TOTAL SHEETS
4	SU012 (B)	5	13

- INLETS - NORTH SIDE  
TYPE 3-H REQ'D
- #10 5+78 - 21.5' LEFT
  - #11 5+93 - 39' "
  - #13 6+28 - 37' "
  - #14 6+47 - 21.5' "
  - #15 8+00 - 21.5' "
  - #19 10+50 - 21.5' "

- INLETS - SOUTH SIDE  
TYPE 3-H REQ'D
- #16 7+98 - 38' "
  - #17 8+17 - 21.5' " MOD. IN
  - #18 10+55 - 21.5' "



NW, NE SEC. 1-28-7

NW, NE SEC. 1-28-7

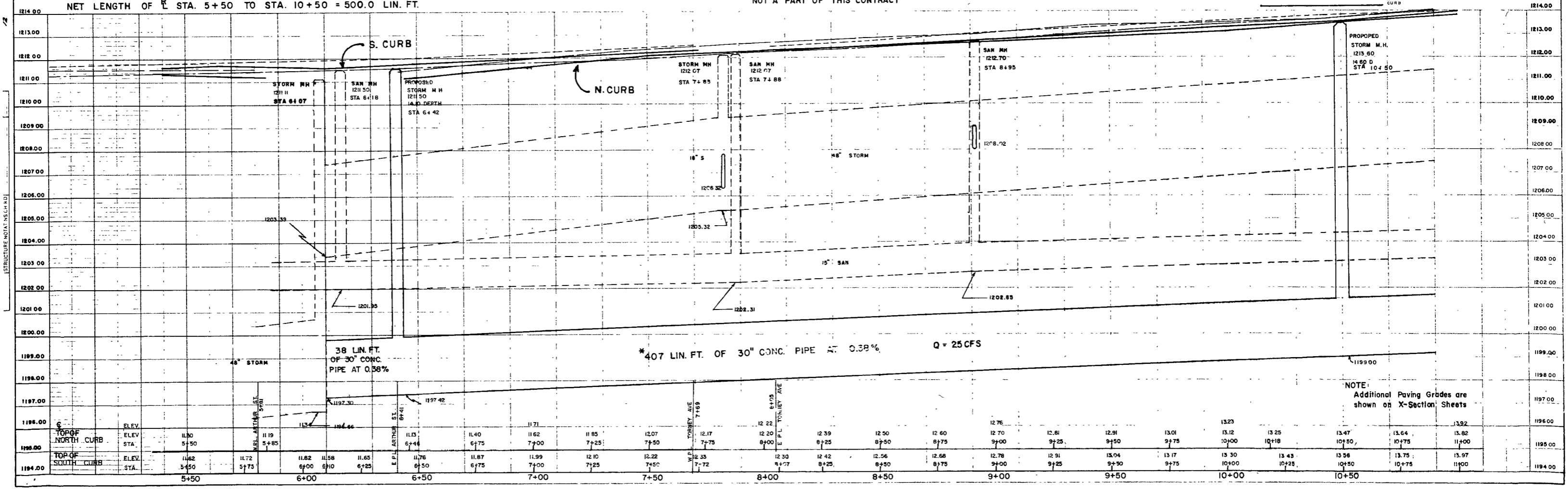
BM HYD ARTHUR ST & TOWNE AV 1213.63  
BM HYD STA 11+78 22' LT 1216.94

\*NOT A PART OF THIS CONTRACT

PROFILE LEGEND

SCALE  
HORIZ 1" = 20'  
VERT 1" = 2'

NET LENGTH OF STA. 5+50 TO STA. 10+50 = 500.0 LIN. FT.

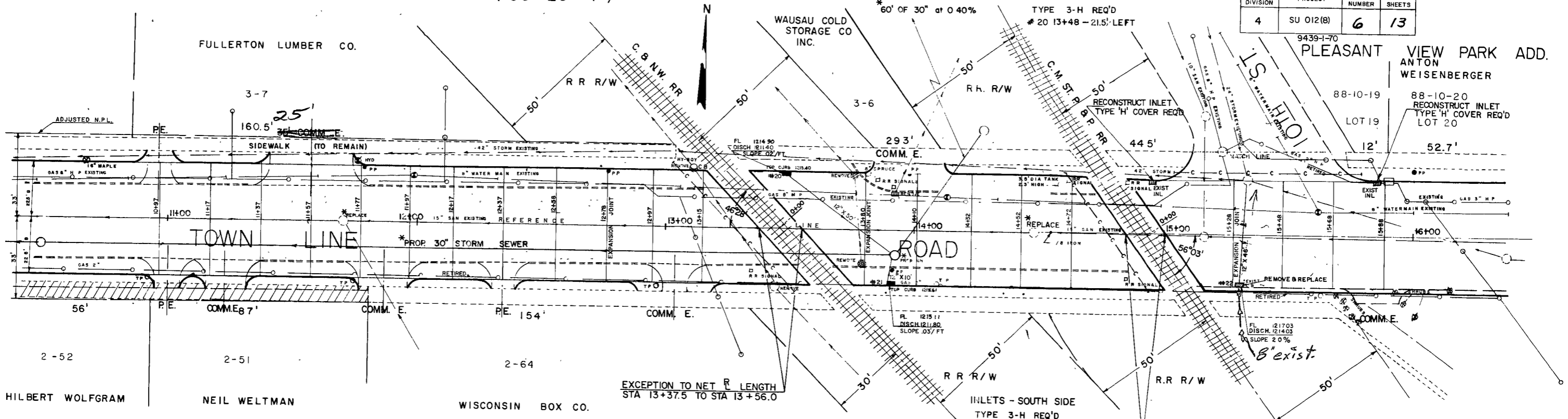


NOTE:  
Additional Paving Grades are shown on X-Section Sheets

1194.00	1196.00	1197.00	1198.00	1199.00	1200.00	1201.00	1202.00	1203.00	1204.00	1205.00	1206.00	1207.00	1208.00	1209.00	1210.00	1211.00	1212.00	1213.00	1214.00
5+50	5+75	6+00	6+25	6+50	6+75	7+00	7+25	7+50	7+75	8+00	8+25	8+50	8+75	9+00	9+25	9+50	9+75	10+00	10+50
1194.00	1194.50	1195.00	1195.50	1196.00	1196.50	1197.00	1197.50	1198.00	1198.50	1199.00	1199.50	1200.00	1200.50	1201.00	1201.50	1202.00	1202.50	1203.00	1203.50
1194.00	1194.50	1195.00	1195.50	1196.00	1196.50	1197.00	1197.50	1198.00	1198.50	1199.00	1199.50	1200.00	1200.50	1201.00	1201.50	1202.00	1202.50	1203.00	1203.50

GOV'T LOT 3 (36-29-7)

B.P.R. DIVISION	PROJECT	SHEET NUMBER	TOTAL SHEETS
4	SU 012(B)	6	13



PROFILE LEGEND

---	EXIST S.P.L.
---	EXIST N.P.L.
---	REF. LINE
---	PROP. CURB

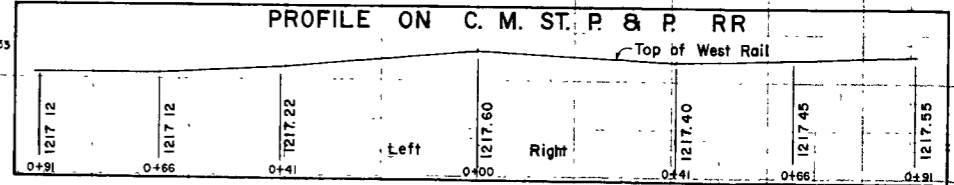
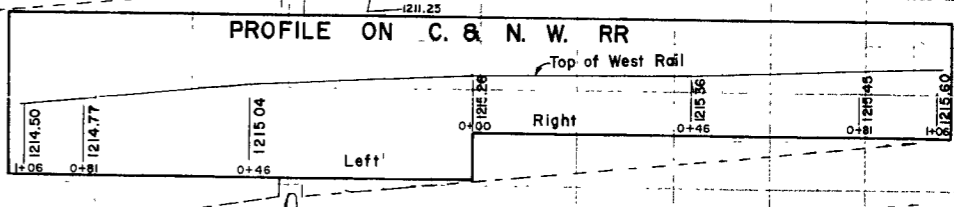
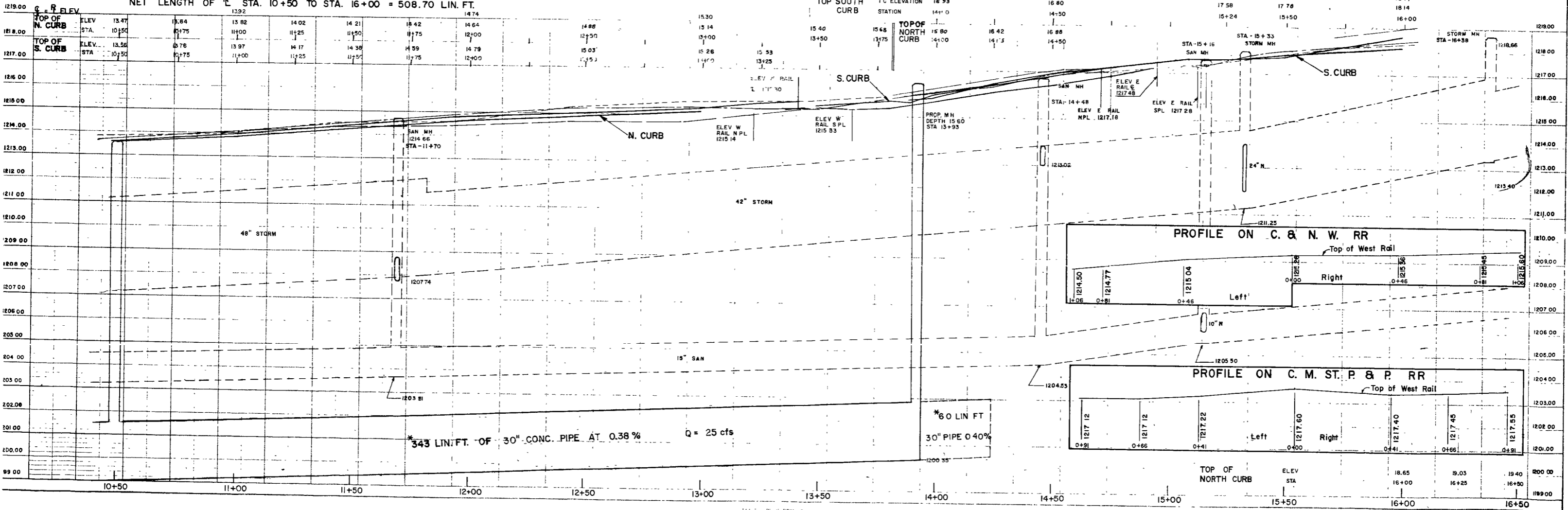
SCALE  
 HORIZ 1" = 20'  
 VERT 1" = 2'

BM HYD STA. 11+78 22' LT 1216.94  
 BM P POLE STA. 16+00 25' LT 1219.81

\*NOT A PART OF THIS CONTRACT

NW, NE SEC. 1-28-7

NET LENGTH OF R STA. 10+50 TO STA. 16+00 = 508.70 LIN. FT.



\*343 LIN. FT. OF 30" CONC. PIPE AT 0.38% Q = 25 cfs

\*60 LIN. FT. 30" PIPE @ 0.40%

TOP OF NORTH CURB	ELEV STA	18.65	19.03	19.40
		16+00	16+25	16+50

PLEASANT VIEW PARK

BLK 10

4 SU 012 (8) 7 / 13  
9439-1-70

ANTON WEISENBERGER

METS PACHARD

MARGARET DUGGAN

LUDWIG STAHEL

CHARLES J. SMITH

CARL PAULUS

MARIE KREBS

LEONARD J. FIEND

88-10-20

88-10-21

88-10-22

88-10-7

88-10-8

88-10-9

88-10-10

88-10-11

88-10-12

LOT 20

LOT 21

LOT 22

LOT 7

LOT 8

LOT 9

LOT 10

LOT 11

LOT 12

52.7'

42.7'

62.7'

55.5'

55.5'

55.5'

63.5'

55'

48'

COMM. E.

SIDEWALK (TO REMAIN)

PE.

PE.

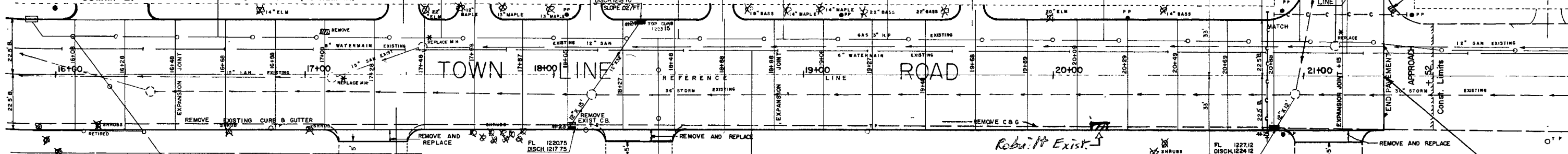
PE.

PE.

PE.

PE.

21<sup>ST</sup> ST.



TOWN LINE ROAD

INLETS- NORTH SIDE  
TYPE 3-H REQ'D.  
# 24 STA. 18+35 - 215' LEFT

INLETS SOUTH SIDE  
TYPE 3-H REQ'D.  
# 23 STA 18+07 - 215' RIGHT  
# 25 STA 20+90 - 215' RIGHT

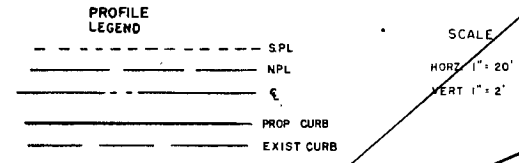
END OF PROJ. SU 012 (8)  
STA. 21+32

KRAFT FOODS CO.

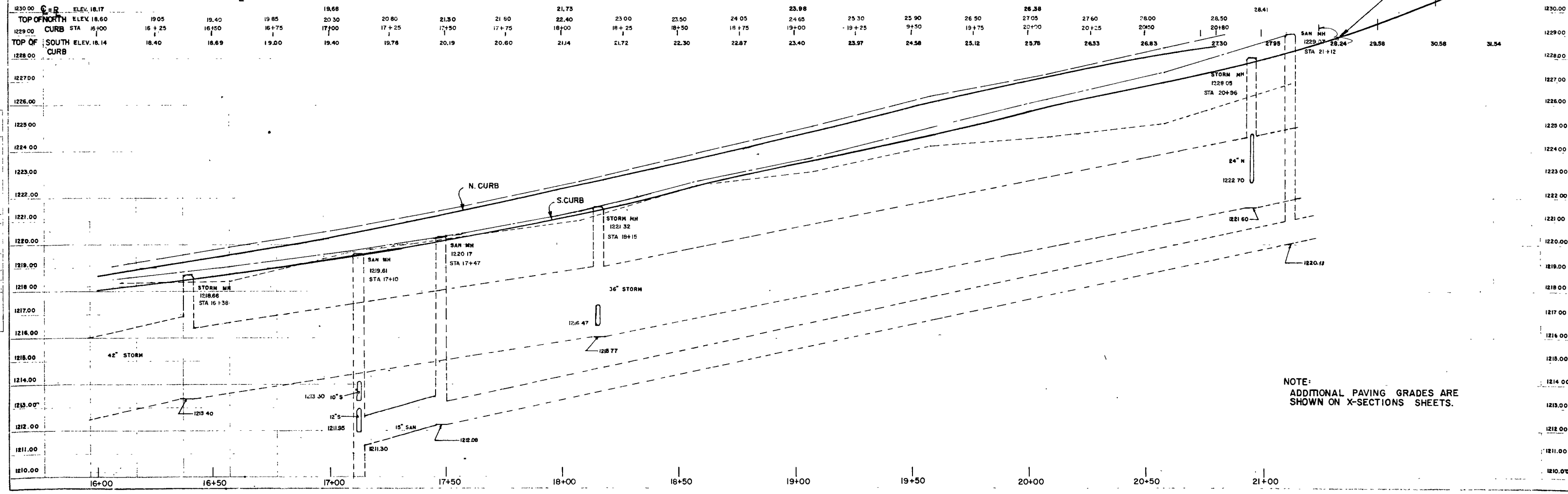
NE,NE SEC. 1-28-7

BM P POLE STA 16+00 25 4' LT 1219 81

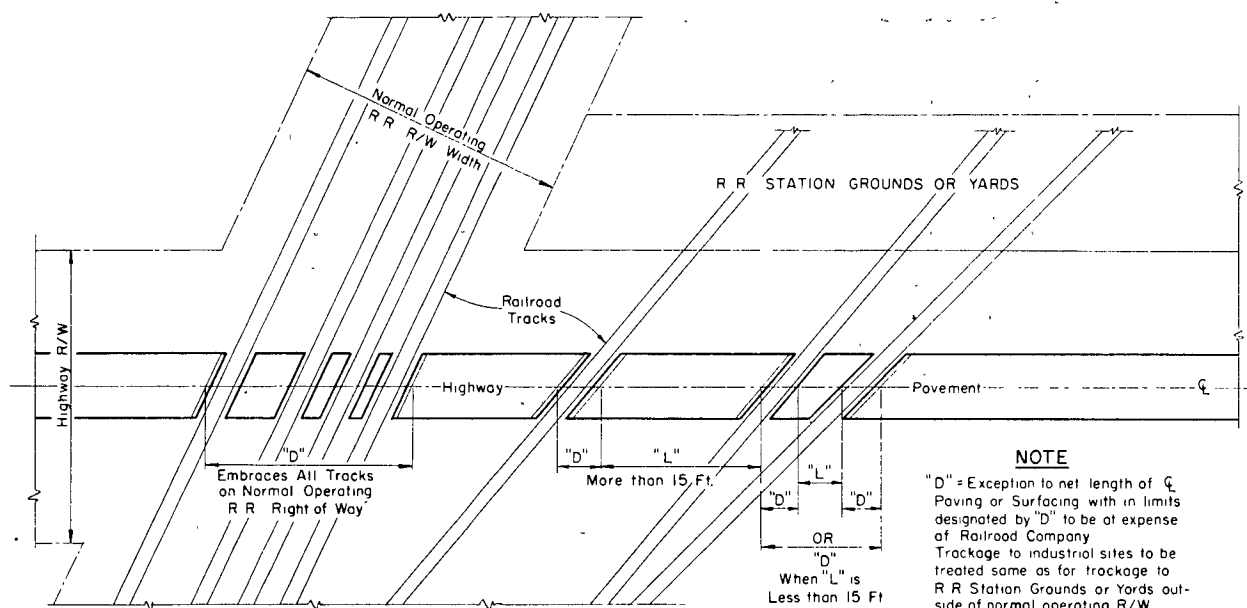
\*NOT A PART OF THIS CONTRACT



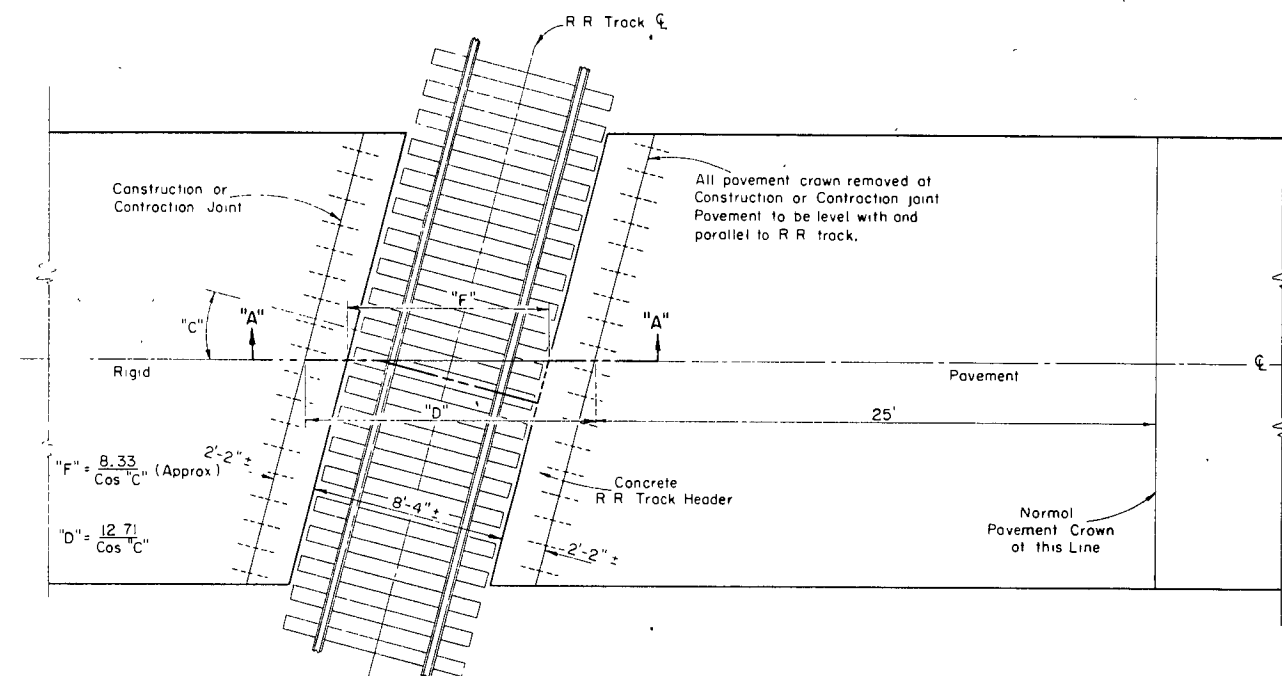
NET LENGTH OF R STA. 16+00 TO STA. 21+32 = 532.0 LIN. FT.



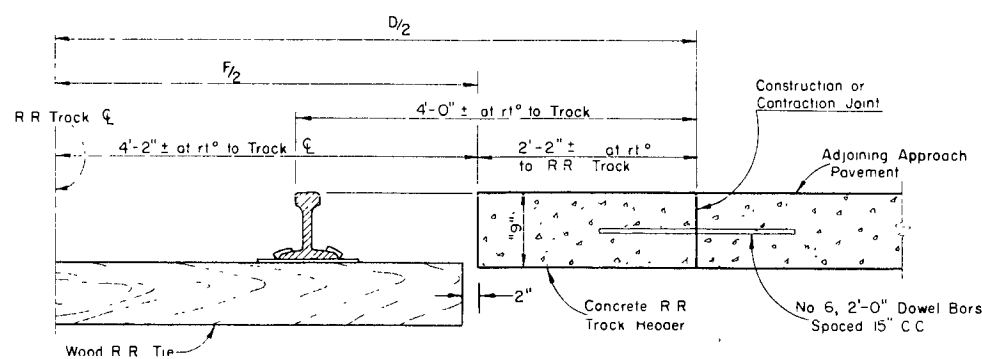
NOTE:  
ADDITIONAL PAVING GRADES ARE  
SHOWN ON X-SECTIONS SHEETS.



**TYPICAL TYPES OF RAILROAD GRADE CROSSINGS  
SHOWING PAVEMENT HEADER LOCATIONS  
AND MEASUREMENT DETAILS**



**RAILROAD APPROACH  
CONSTRUCTION DETAILS**



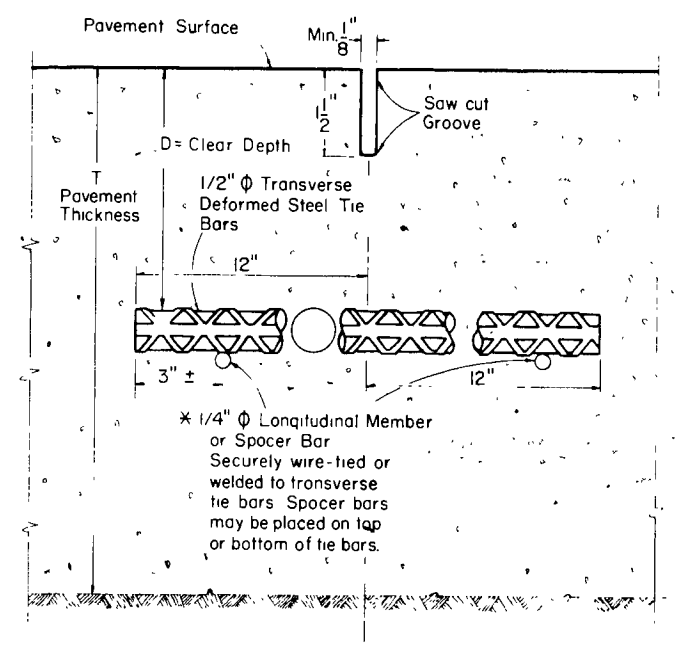
**CROSS SECTION "A-A"  
SHOWING PAVEMENT HEADER DETAILS  
AT R.R. TRACKS**

**GENERAL NOTES**

Details of construction not shown on this drawing shall conform to the pertinent requirements of the Standard Specifications and the applicable Special Provisions. The above details apply for concrete surfacing. For bituminous surfacing, construction work shall be carried up to railroad tie ends. Dimension "D" is an exception to Net Centerline Length for all Surfacing and Grading Projects.

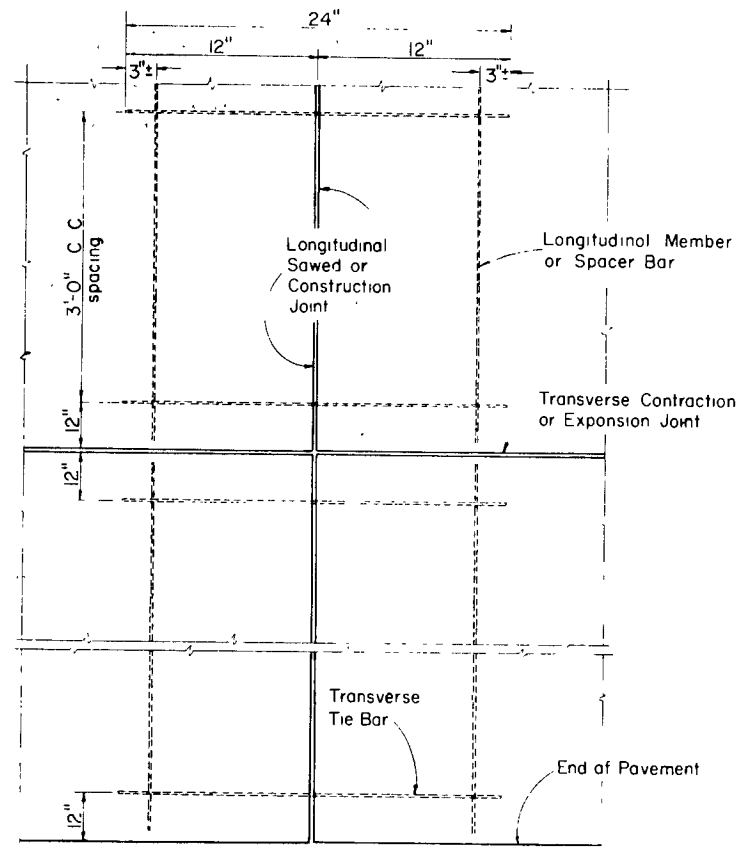
RAILROAD APPROACH DETAILS CONCRETE PAVEMENT	
STATE HIGHWAY COMMISSION OF WISCONSIN	
RECOMMENDED FOR APPROVAL	
DATE 4/3/63	<i>J. S. Pelt</i> ENGINEER OF DESIGN
APPROVED	
DATE 4/5/63	<i>E. C. Ruston</i> STATE HIGHWAY ENGINEER
PLATE NO. 2-2.11	



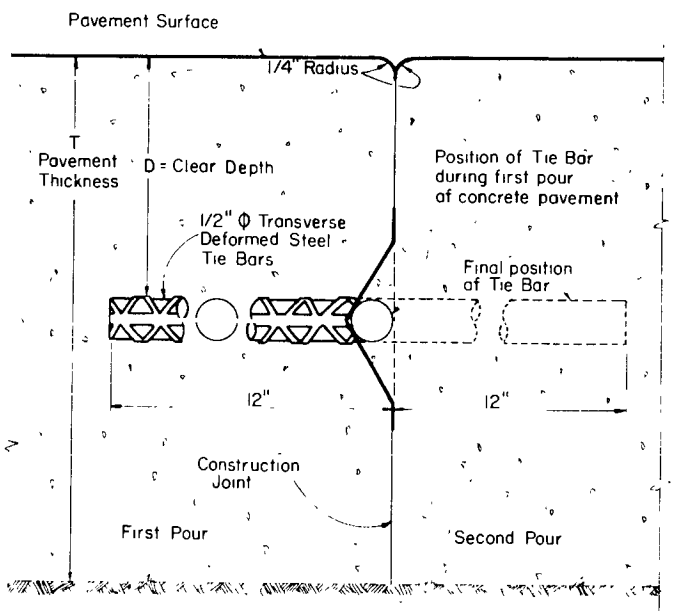


**SAWED JOINT**  
ELEVATION, Showing Tie Bars and Positioning Details

Pavement Thickness	"D"
8"	2"-4 3/4"
9"	2"-5 1/2"
10"	2"-5 3/4"



**PLAN VIEW, Showing Tie Bars and Location Details**



**CONSTRUCTION JOINT**  
ELEVATION, Showing Tie Bars and Positioning Details

**GENERAL NOTES**

Details of Construction not shown on this drawing shall conform to the pertinent requirements of the Standard Specifications and the applicable Special Provisions

**ALTERNATE DESIGNS-**

Alternate designs of Bolt Type joint installations may be used upon written approval of the engineer

**SEALING JOINTS -**

Longitudinal Joints shall not be sealed

**\* TIE BARS**

Tie bars shall be installed as shown (assembled ladder type pattern), or the longitudinal member spacer bar may be omitted if the transverse tie bars can be accurately placed and firmly held during the placing and setting of concrete by devices or methods approved by the engineer, or if mechanical means of placing the tie bars in the plastic concrete are approved by the engineer

Devices may be omitted on the longitudinal construction joint type when in the opinion of the engineer the tie bars will be retained in their proper designated position

**LONGITUDINAL JOINTS  
CONCRETE PAVEMENT**

**STATE HIGHWAY COMMISSION OF WISCONSIN**

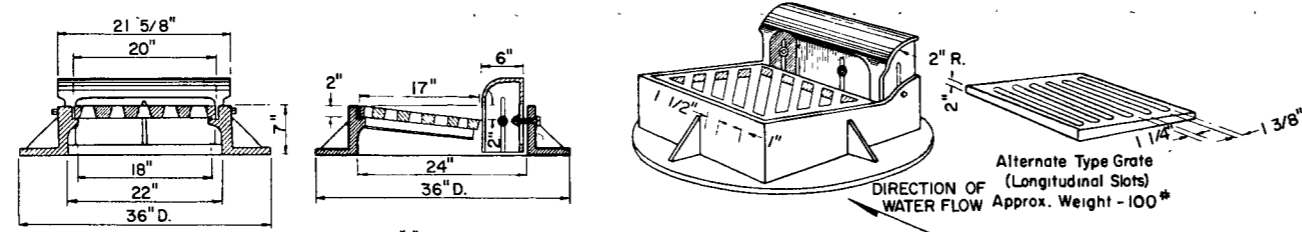
RECOMMENDED FOR APPROVAL:

DATE 2/3/66 *EJ. Park* CHIEF DESIGN ENGINEER

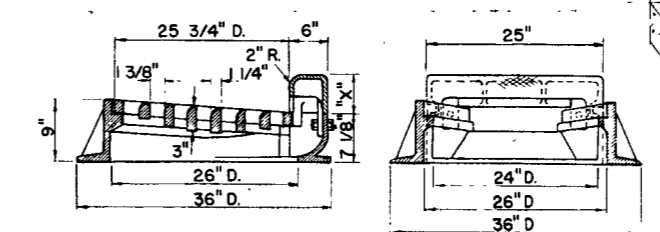
APPROVED 2/3/66 *J. J. ...* STATE HIGHWAY ENGINEER

**PLATE NO. 4-4.4.8**

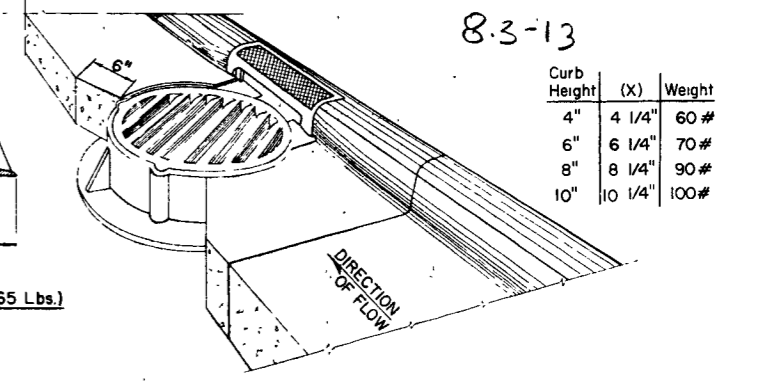
8.3-13



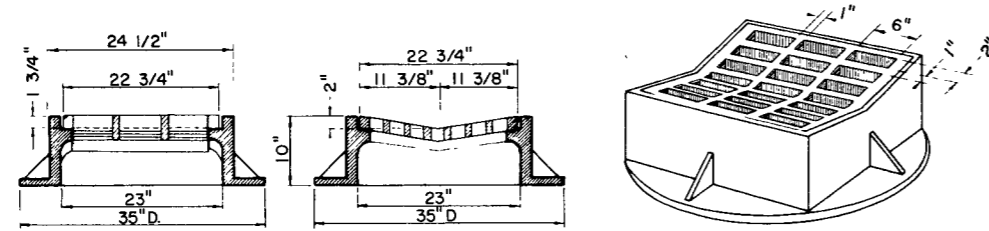
**TYPE "A"** - (Approx Weight 390 Lbs)  
 Frame Weight - 250#  
 Grate " - 90#  
 Box " - 50#



**TYPE "G"** - (Approx Weight 425-465 Lbs.)  
 Frame Weight - 235#  
 Grate " - 130#  
 Box - See Table

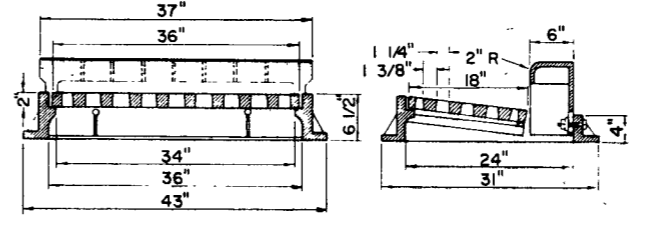


Curb Height	(X)	Weight
4"	4 1/4"	60#
6"	6 1/4"	70#
8"	8 1/4"	90#
10"	10 1/4"	100#

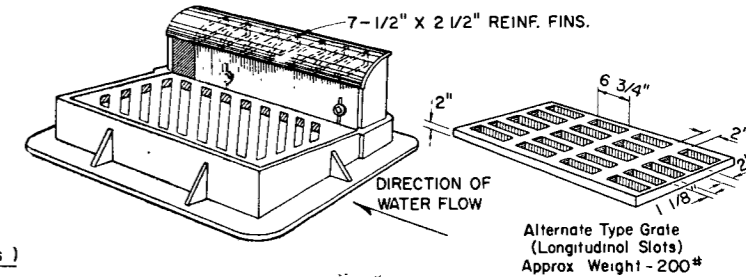


**TYPE "B"** - (Approx Weight 414 Lbs)  
 Frame Weight - 275#  
 Grate " - 139#

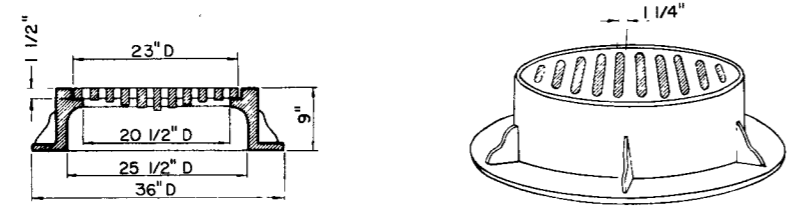
**SPECIAL NOTE**  
 Diagonal Slots shall be oriented to the direction of flow as shown hereon. Hence RIGHT and LEFT Grates shall be furnished depending on direction of flow (See Sketch Below).  
 Longitudinal slot type grates may be used ONLY where bicycles are prohibited.



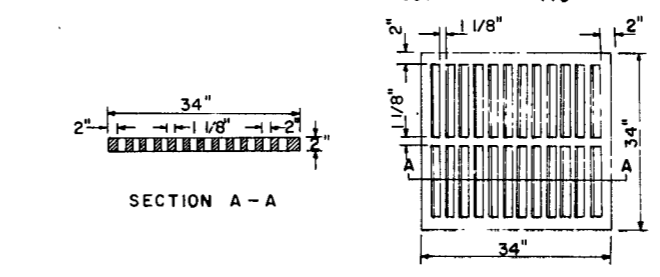
**TYPE "H"** - (Approx. Weight 530 Lbs.)  
 Frame Weight - 220#  
 Grate " - 200#  
 Box " - 110#



Alternate Type Gate (Longitudinal Slots)  
 Approx Weight - 200#



**TYPE "C"** - (Approx Weight 370 Lbs)  
 Frame Weight Type "C" & Type "D" - 255#  
 Slotted Gate Weight - 115#  
 Solid Cover Weight - 150#  
 (Note: Frame for Type "C" same as for Type "D")



**INLET COVER TYPE MS**  
 GRATE WEIGHT 270#

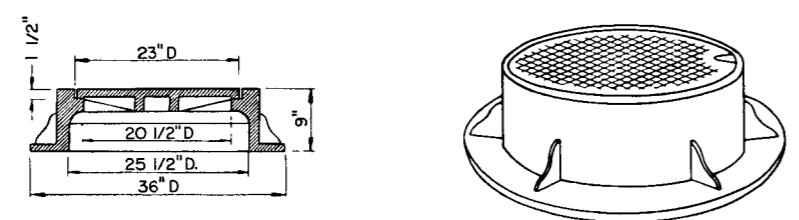
**GENERAL NOTES**  
 Details of construction, materials and workmanship not shown on this drawing shall conform to the pertinent requirements of the Standard Specifications and the applicable Special Provisions.

**BEARING SURFACES**  
 All Catch Basin and inlet frames and grates which are placed in vehicular traffic areas shall be "Non-Rocking" type, so as to prevent any or all cover noise under traffic.

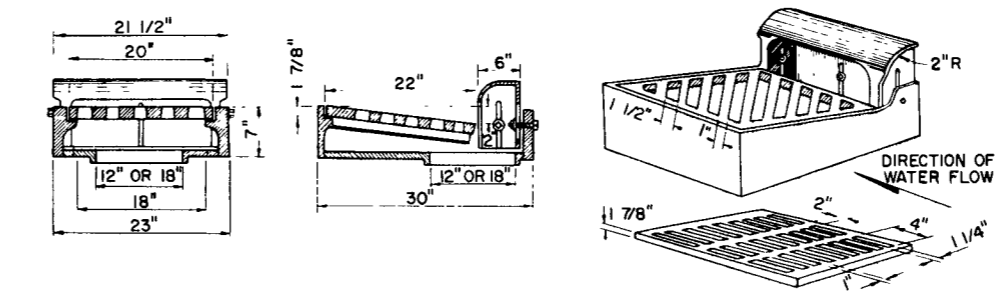
**NOMENCLATURE**  
 All Catch Basin and inlet units are designated on the Plans as "Catch Basins 1-A", 2-B, etc., or "Inlets 1-A", 3-H, etc. This designation is interpreted to mean that the number, or first digit designates the masonry portion of the structure, and the following letter or second digit designates the type of cover or iron casting (shown hereon) to be used therewith to comprise the complete unit "Catch Basin" or "Inlet" in place.

**ADJUSTMENTS**  
 Curb box height to be adjustable 4"-9" unless otherwise noted. Curb box height to be adjusted after curb form is in place.

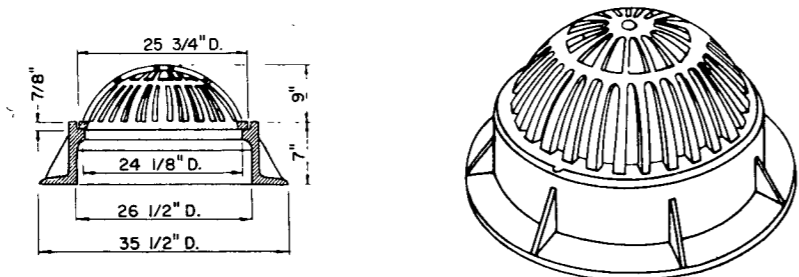
**ALTERNATE DESIGNS**  
 Detailed drawings for proposed alternate designs for "Catch Basin" or "Inlet" covers may be submitted to the Engineer for approval providing that such alternate designs make provision for equivalent capacity and strength.



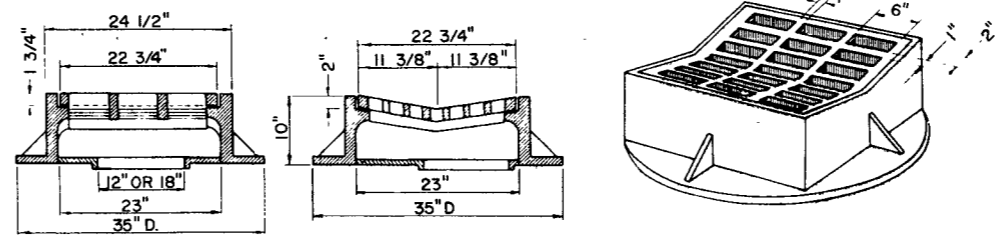
**TYPE "D"** - (Approx Weight 405 Lbs)  
 (Note: Frame for Type "D" same as for Type "C")



**TYPE "R"** - (Approx Weight 450 Lbs.)



**TYPE "E"** - (Approx Weight 325 Lbs)



**TYPE "S"** - (Approx Weight 450 Lbs.)

Plate No. 5-3.4.8

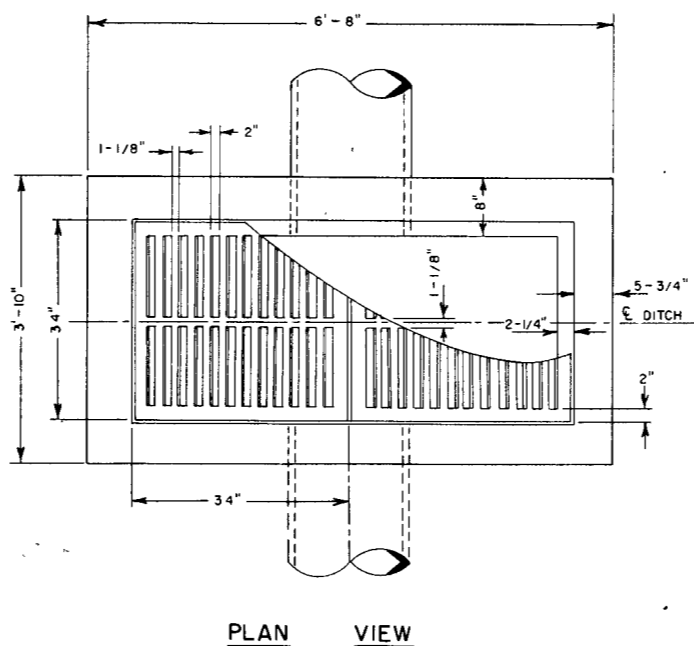
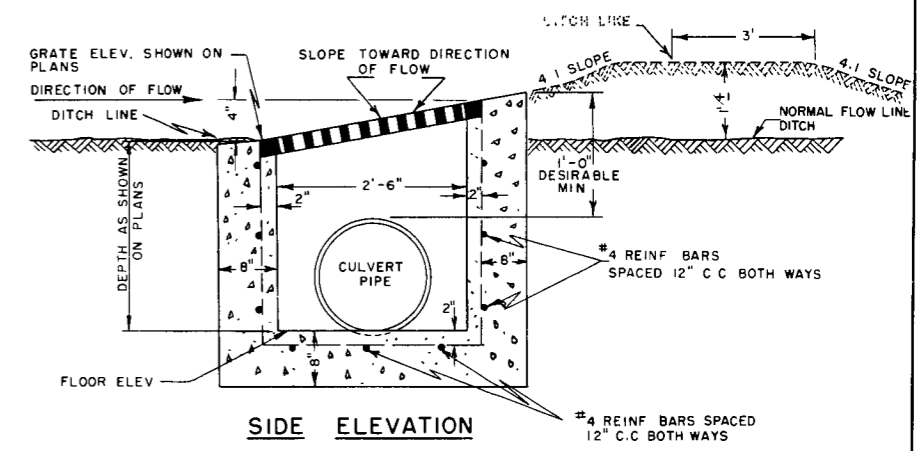
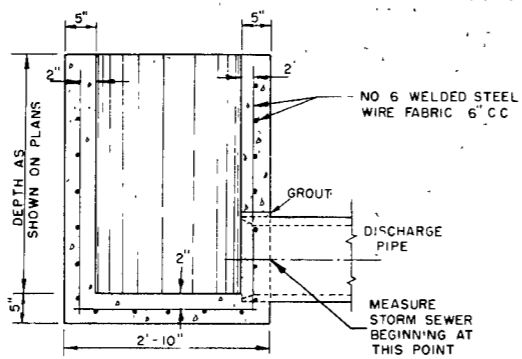
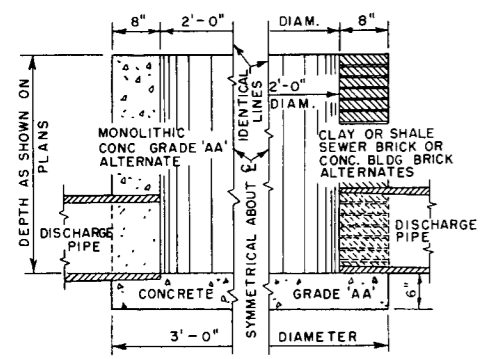
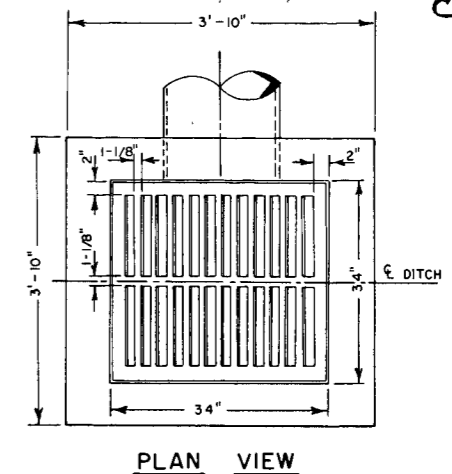
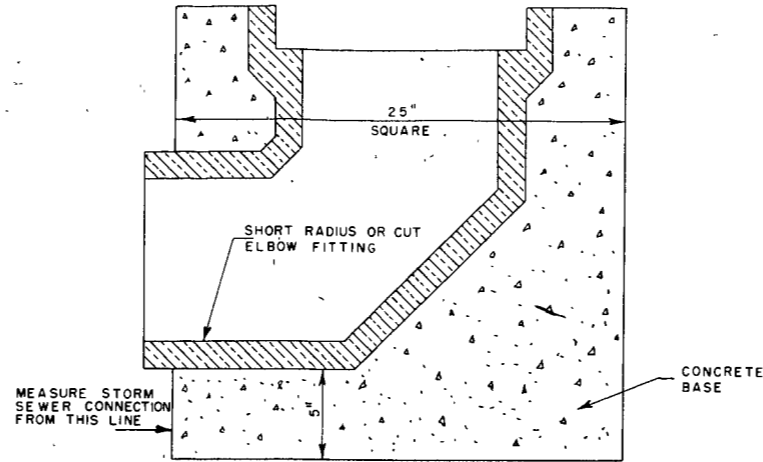
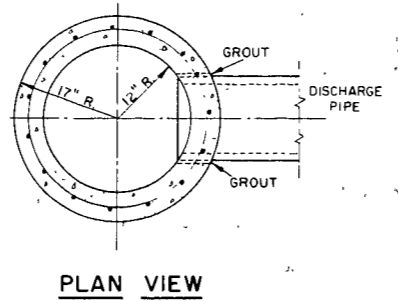
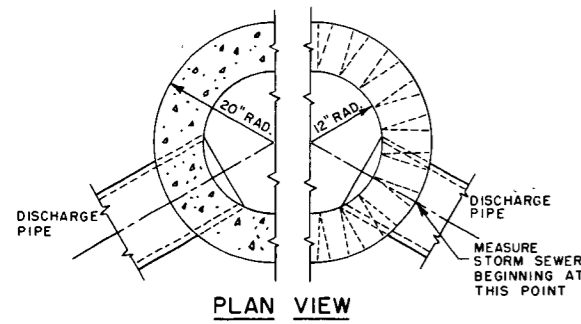
**CATCH BASIN & INLET COVERS**

State Highway Commission of Wisconsin  
 RECOMMENDED FOR APPROVAL

DATE APPROVED: 7/17/67  
 DATE: 7/17/67

CHIEF DESIGN ENGINEER  
 STATE HIGHWAY ENGINEER

Plate No. 5-3.4.8



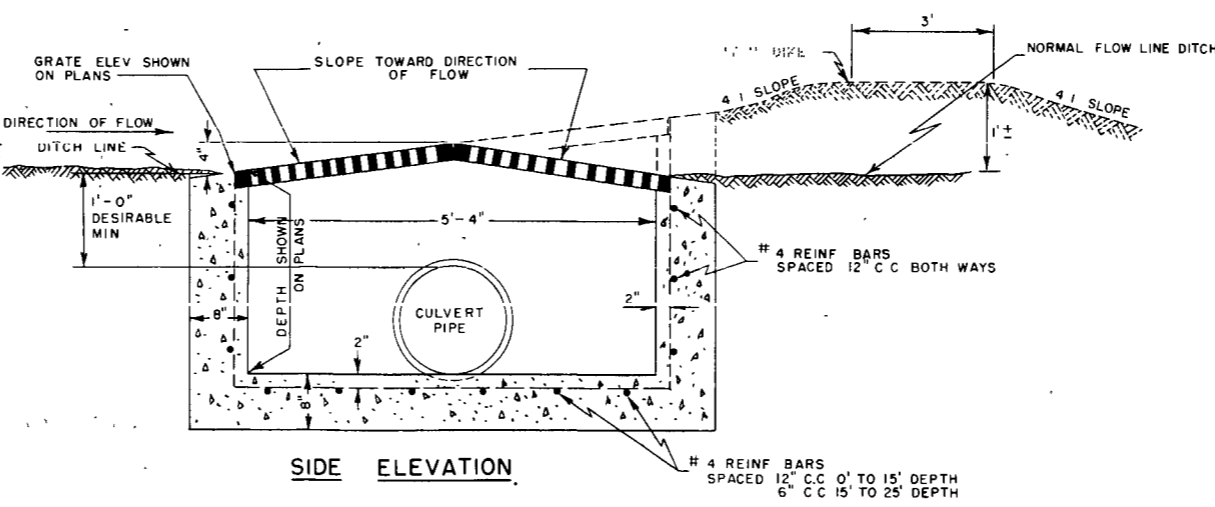
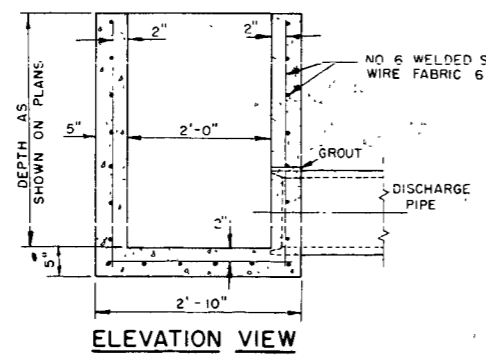
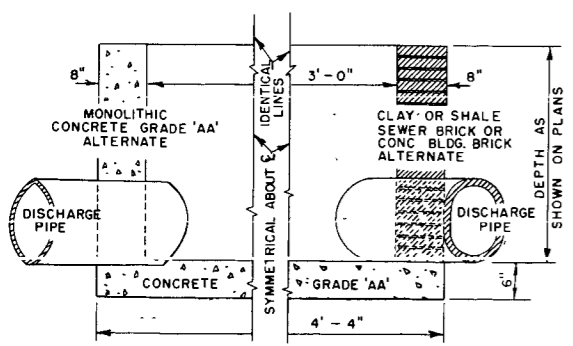
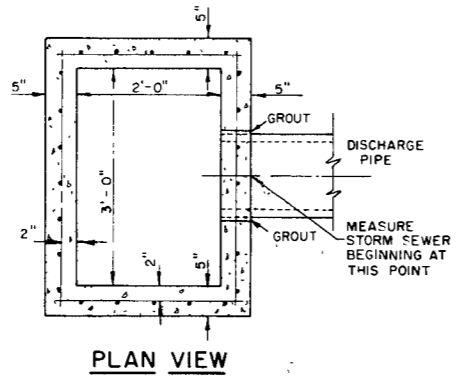
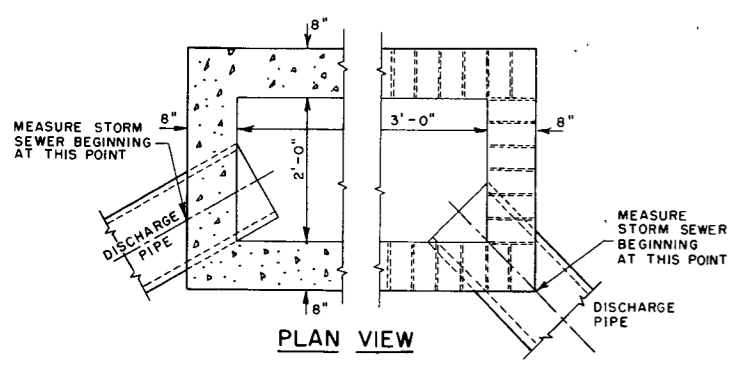
INLET TYPE 8

GENERAL NOTES:

DETAILS OF CONSTRUCTION, MATERIALS AND WORKMANSHIP NOT SHOWN ON THIS DRAWING SHALL CONFORM TO THE PERTINENT REQUIREMENTS OF THE STANDARD SPECIFICATIONS AND THE APPLICABLE SPECIAL PROVISIONS.

ARRANGEMENT, SIZE AND NUMBER OF INLET AND DISCHARGE PIPES SHALL CONFORM TO THE NEEDS OF THE PERTINENT LOCATION.

INLETS ARE CALLED FOR ON THE PLANS AS "INLETS 1-A", "INLETS 2-R", ETC., THE NUMBER DESIGNATES THE MASONRY PORTION OF THE STRUCTURE AND THE LETTER DESIGNATES THE COVER TO BE USED THEREON.



INLET TYPE 3

INLET TYPE 9

INLETS

STATE HIGHWAY COMMISSION OF WISCONSIN

RECOMMENDED FOR APPROVAL

DATE 11-21-63

J. S. Pelt ENGINEER OF DESIGN

APPROVED:

DATE 12/3/63

STATE HIGHWAY ENGINEER

**GENERAL NOTES**

The contractor shall construct, place and maintain barricades as shown on the drawing and as required by the Standard Specifications or applicable Special Provisions.

**CLASS I BARRICADE:**

Class I Barricades shall be of variable length as indicated, and long barricades shall be assembled from these units. The Class I Barricade is the type normally required for major operations, where the barricade will remain in place for extended periods. Class I Barricades shall be used at points where the road is closed to traffic. Gates or movable sections of a barricade shall be provided when necessary, for access of equipment or other authorized vehicles.

Wing Barricades are Class I Barricades erected on the shoulder on one or both sides of the pavement to give Traffic the perceptive effect of a narrowing or restricted roadway. The ends closest to traffic of all three members of a wing barricade shall be in a vertical line. If used in a series, they should start at the outer edge of the shoulder and be brought progressively closer to the pavement. Wing Barricades may be used as a mounting for the advance warning or guide signs or for flashers. When used on two-way roadways, the back of the wing barricade shall be painted reflectorized white.

**CLASS II BARRICADE:**

Class II Barricades may be used only where the hazard to traffic is relatively small, and for the more or less continuous delimiting of a restricted roadway, or for temporary daytime use.

**MATERIAL & FABRICATION:**

Lumber shall be of a grade structurally sound and sufficiently rigid to satisfactorily support and maintain the purpose and intent of a barricade facility. Metal shall be sufficiently rigid to satisfactorily support and maintain the purpose and intent of a barricade facility. The fabrication of the barricade shall be in accord with good pertinent woodworking and metalworking practices. All lumber or timber dimensions stated are nominal.

**PAINTING:**

All barricades shall be painted in alternate 4" or 6" black and white stripes at a 45° angle. The width of stripe shall be consistent for each complete barricade installation. Black stripes shall be painted with weather resistant and durable black paint. White stripes shall be primed, followed by two coats of white reflectorized paint or reflective wide angle sheeting.

**DIRECTION OF DIAGONAL STRIPES:**

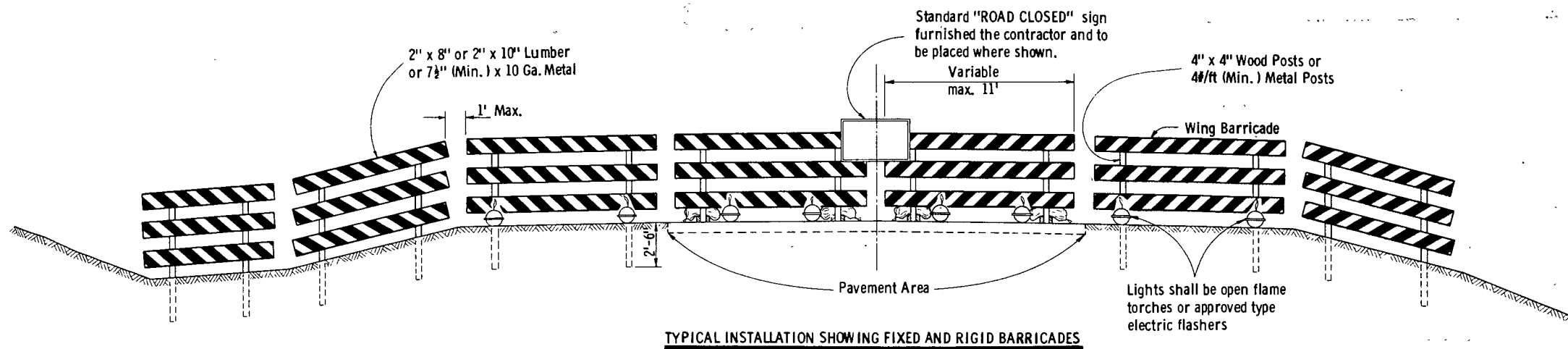
Where a barricade extends entirely across the roadway with no vehicle access provision, the stripes shall slope downward toward the highway centerline. Where vehicle access is permitted, the stripes shall slope downward in the direction toward which vehicles must turn in detouring. Where both right and left turns are provided for, the stripes shall slope downward in both directions from the center. The stripes on wing barricades shall point downward toward the roadway.

**LIGHTING:**

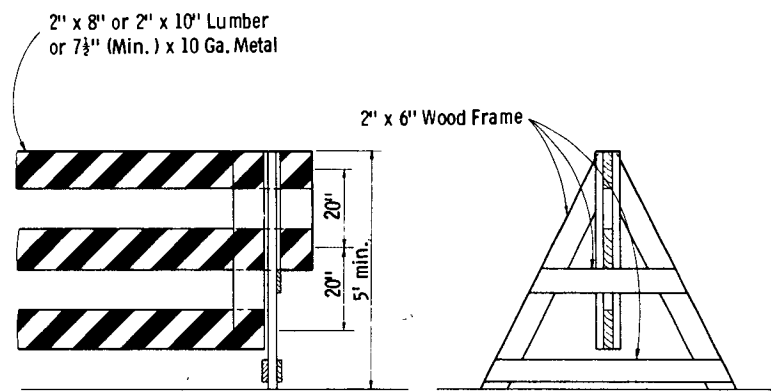
Lighting devices for barricades shall conform to the requirements of the Standard Specifications.

**MEASUREMENT & PAYMENT:**

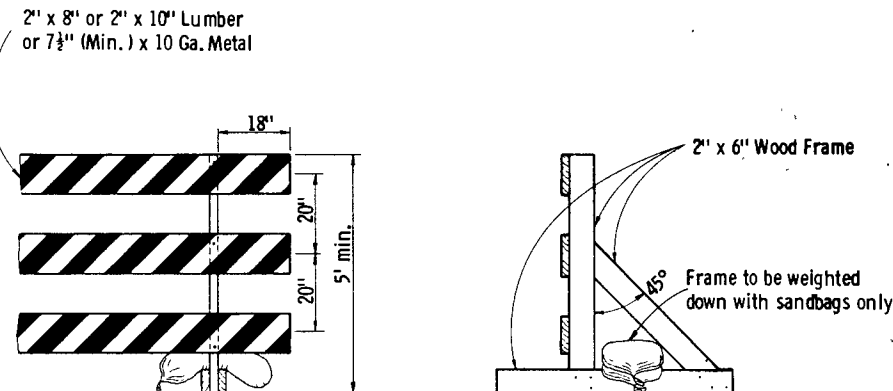
All barricades, unless otherwise provided for in the plans and/or special provisions shall be furnished, placed, and maintained as noted above, and no additional compensation will be allowed but shall be construed to be included in the price bid for other items.



TYPICAL INSTALLATION SHOWING FIXED AND RIGID BARRICADES

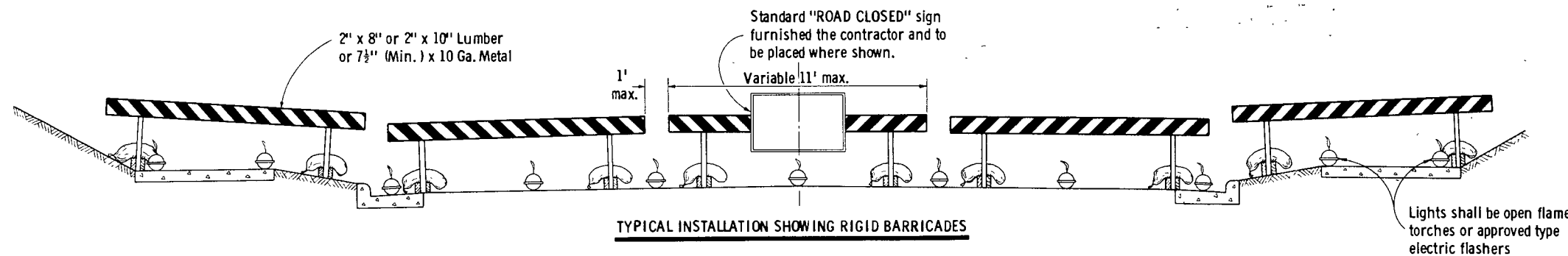


ALTERNATE TYPE INSTALLATION (DEMOUNTABLE)

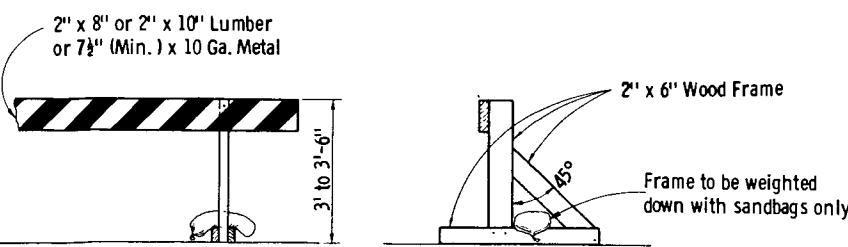


ALTERNATE TYPE INSTALLATION (RIGID)

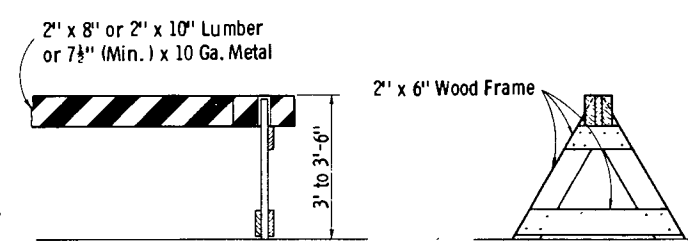
**CLASS I BARRICADES**



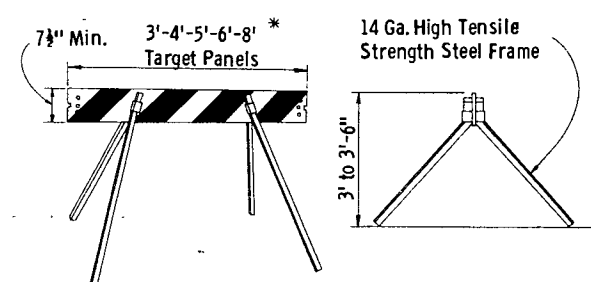
TYPICAL INSTALLATION SHOWING RIGID BARRICADES



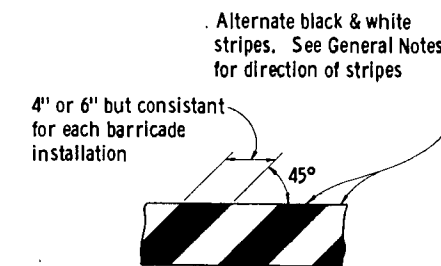
ALTERNATE TYPE INSTALLATION (RIGID)



ALTERNATE TYPE INSTALLATION (DEMOUNTABLE)



\* Maximum length of combination panels 16'  
ALTERNATE TYPE INSTALLATION (DEMOUNTABLE)

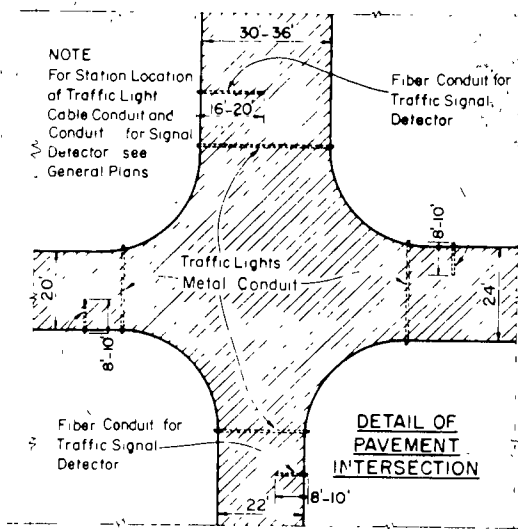


TYPICAL DIAGONAL STRIPES  
Applies to all Classes & Types of Barricades

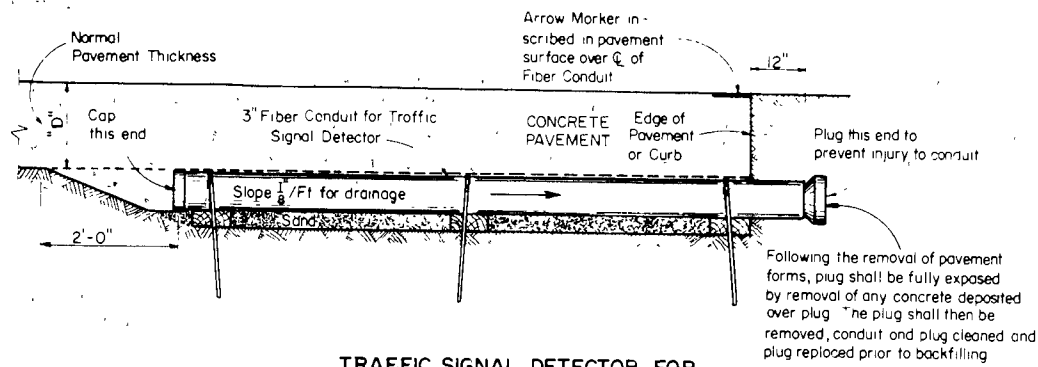
**CLASS II BARRICADES**

CONSTRUCTION BARRICADE	
State Highway Commission of Wisconsin	
RECOMMENDED FOR APPROVAL	
DATE 1/11/67	<i>E. J. Gubit</i> CHIEF DESIGN ENGINEER
APPROVED	
DATE 1/13/67	<i>J. J. Dummit</i> STATE HIGHWAY ENGINEER

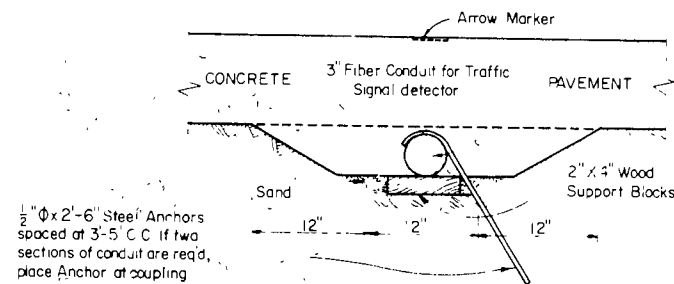
8-6-13



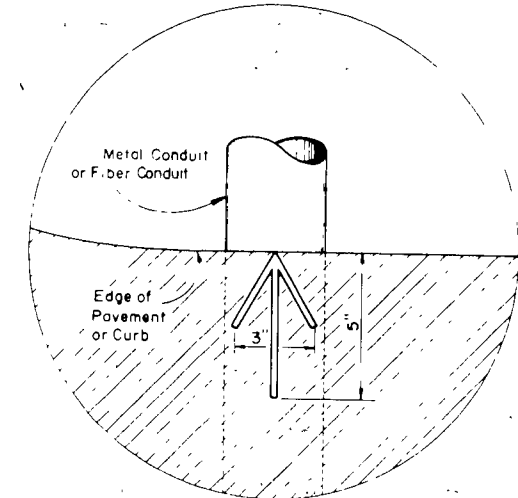
PLAN VIEW  
SHOWING RELATIVE POSITION OF  
TRAFFIC LIGHT CONDUITS AND  
TRAFFIC SIGNAL DETECTOR CONDUITS  
AT UNDIVIDED HIGHWAY INTERSECTIONS



TRAFFIC SIGNAL DETECTOR FOR  
UNDIVIDED HIGHWAYS

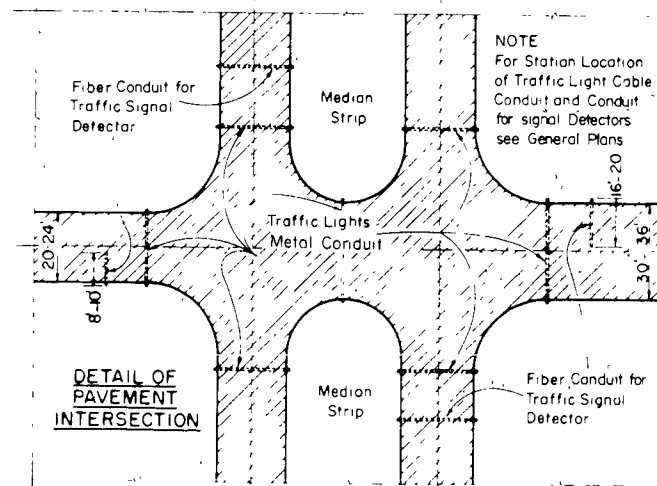


SIDE & END ELEVATIONS  
SHOWING PLACEMENT DETAILS  
FOR TRAFFIC SIGNAL DETECTOR CONDUIT

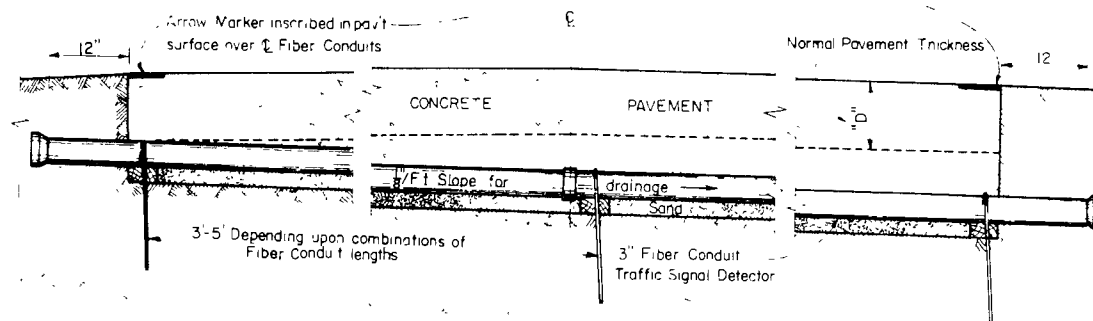


Arrow Marker to be inscribed in fresh concrete and/or bituminous surfacing 1/4 to 3/8 deep at each location where pipe conduit or fiber conduit are placed under rigid surfacing

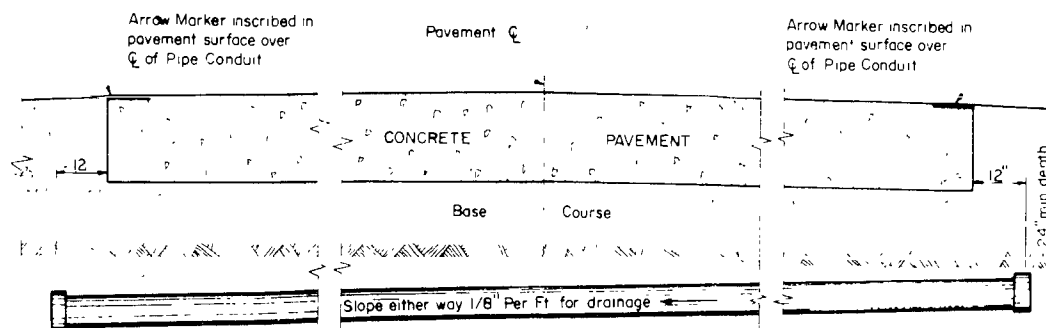
PLAN VIEW - ARROW MARKER



PLAN VIEW  
SHOWING RELATIVE POSITION OF  
TRAFFIC LIGHT CONDUITS AND  
TRAFFIC SIGNAL DETECTOR CONDUITS  
AT DIVIDED HIGHWAY INTERSECTIONS



TRAFFIC SIGNAL DETECTOR FOR  
DIVIDED HIGHWAYS



ELEVATION ON CENTERLINE  
SHOWING PLACEMENT DETAILS  
FOR TRAFFIC SIGNAL CONDUIT

**GENERAL NOTES**

Details of Construction not shown on this drawing shall conform to the pertinent requirements of the Standard Specifications, and the applicable Special Provisions

**MATERIALS**

Metal Conduit shall be furnished and placed as shown hereon and in accord with the Standard Specifications

Fiber Conduit shall be furnished and placed as shown hereon and in accord with the Standard Specifications

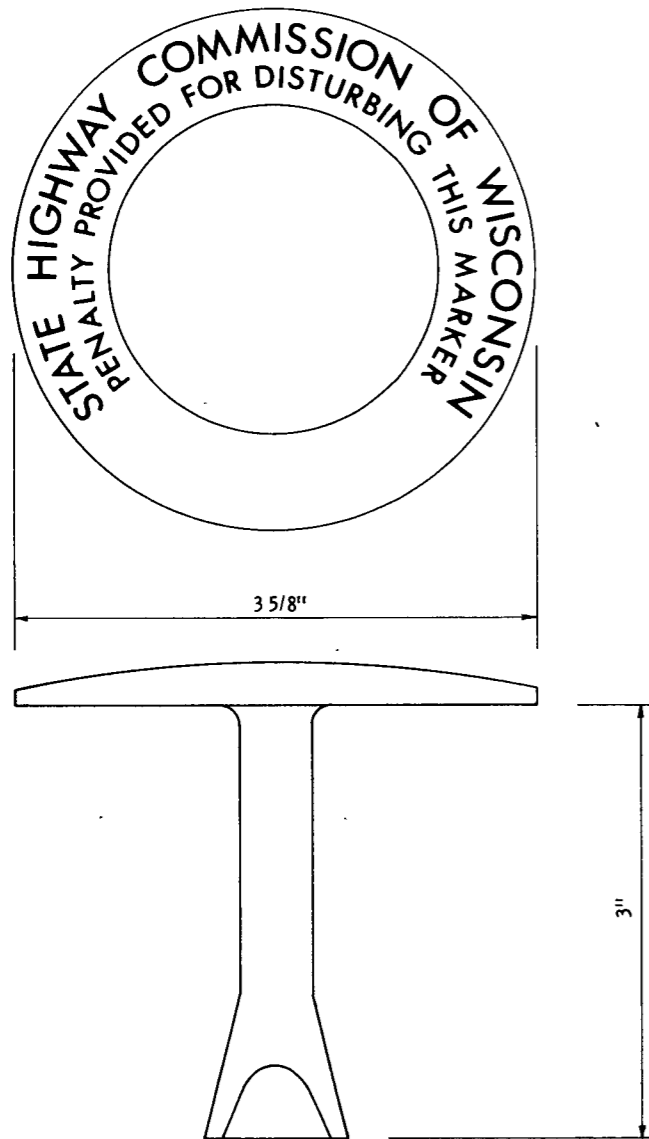
**MEASUREMENT & PAYMENT**

The item of Fiber Conduit shall be measured and paid for by the linear foot complete in place and in accord with Standard Specifications

**CONDUIT SIZE**

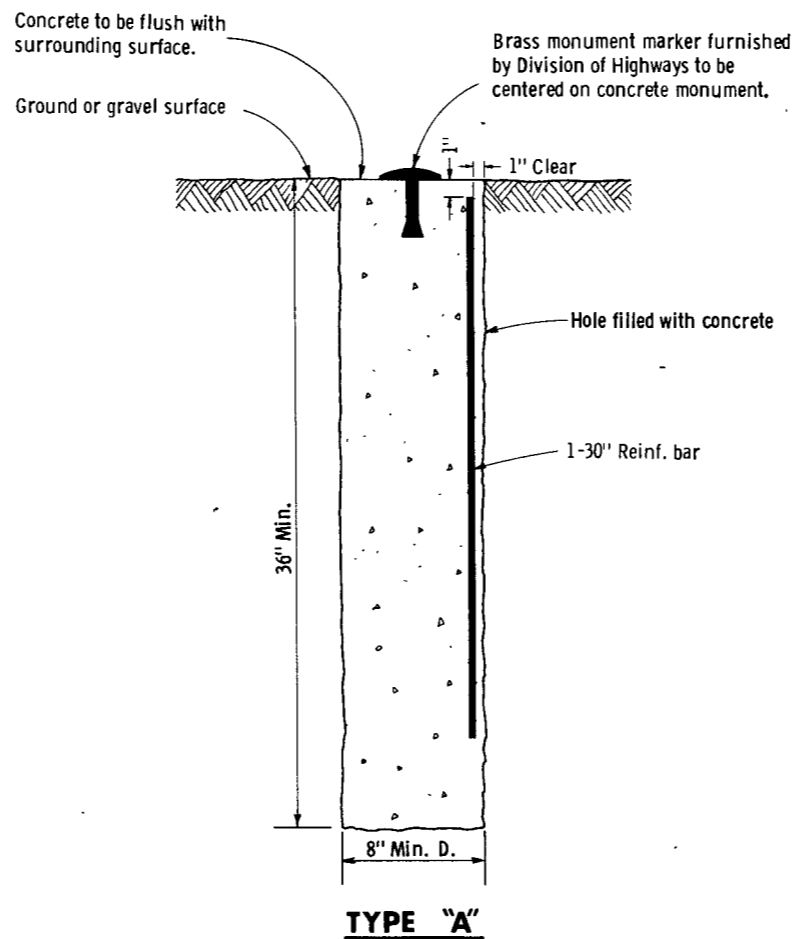
Unless shown or required otherwise on the plans, Metal Conduit shall be 2" I D

<b>METAL CONDUIT &amp; FIBER CONDUIT</b>	
STATE HIGHWAY COMMISSION OF WISCONSIN	
RECOMMENDED FOR APPROVAL	
4-3-63 DATE	J. D. Pitt ENGINEER OF DESIGN
APPROVED	
4/5/63 DATE	E. L. Rostiger STATE HIGHWAY ENGINEER
PLATE NO. 8-5.1.6	



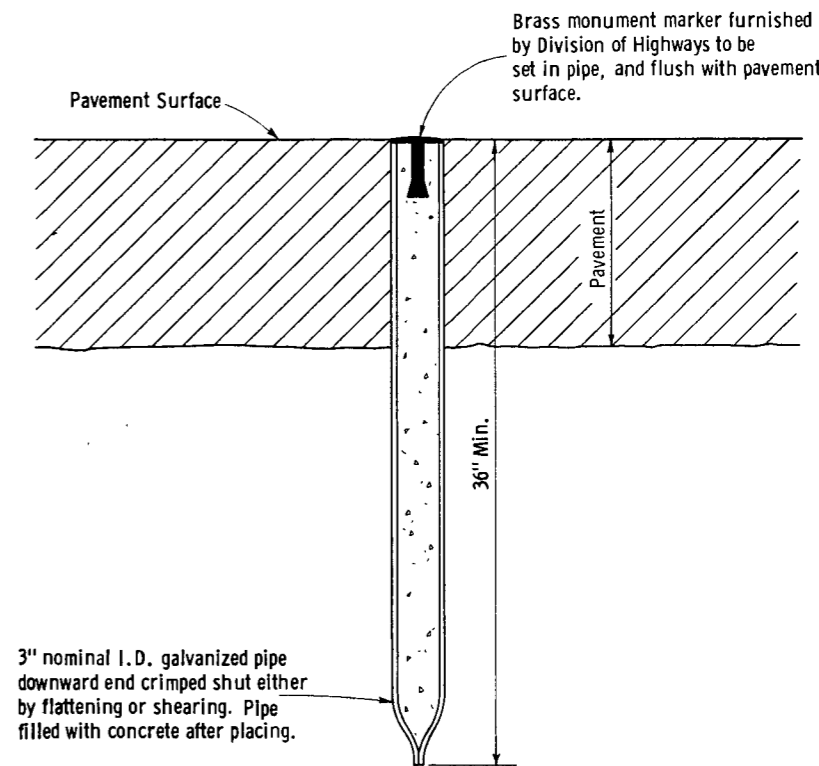
**BRASS  
MONUMENT MARKER**

To be furnished to contractor by  
Division of Highways



**TYPE "A"**

To be used only when monument is  
required outside of pavement surface.



**TYPE "B"**

To be used only when monument  
is required to be located within the  
limits of a pavement surface.

**GENERAL NOTES**

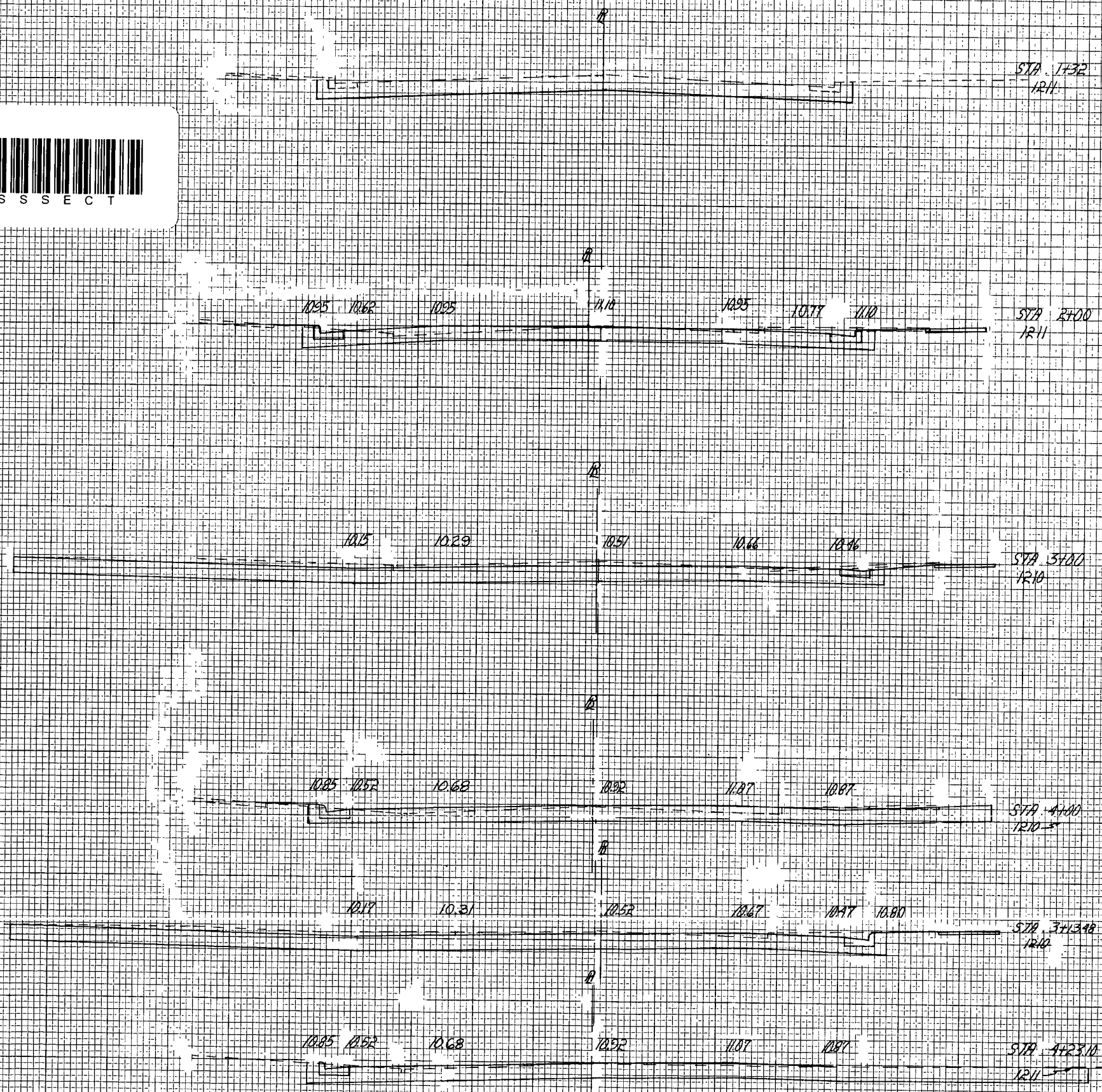
Details of construction, materials and workmanship not  
shown on this drawing shall conform to the Standard  
Specifications and the applicable Special Provisions.

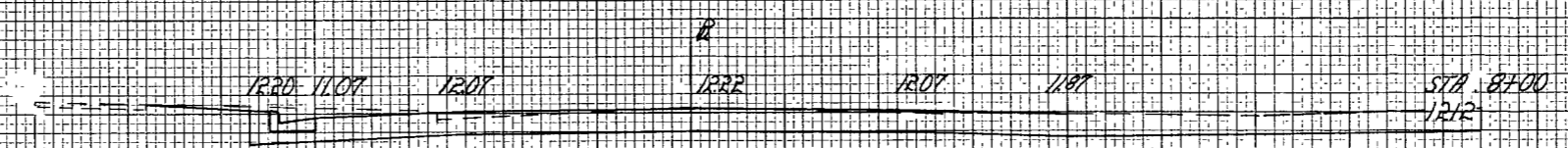
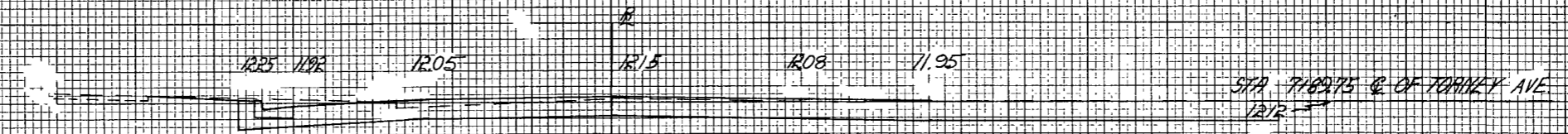
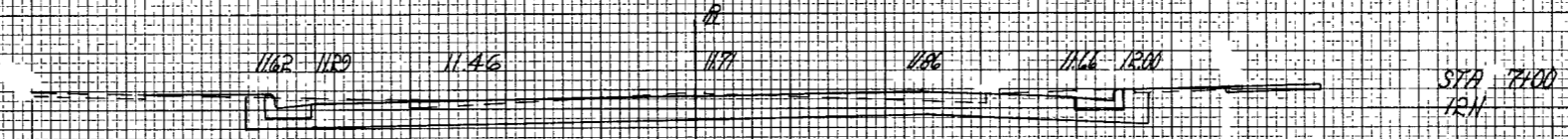
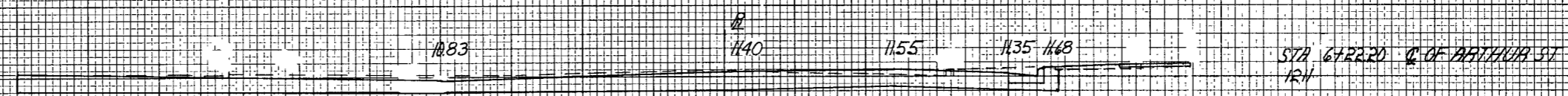
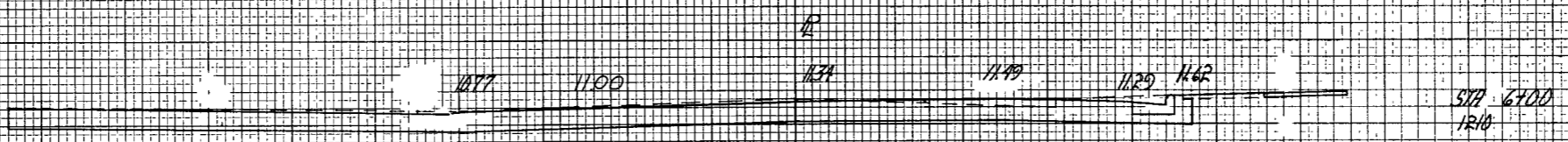
Monuments conforming to Type "A" or Type "B", as  
shown hereon, shall be placed at the direction of the  
engineer.

**LANDMARK REFERENCE  
MONUMENTS**

State of Wisconsin  
Department of Transportation  
Division of Highways

RECOMMENDED FOR APPROVAL  
DATE 1/25/68 E. J. Byrd  
DATE 2/18/68  
CHIEF DESIGN ENGINEER  
STATE HIGHWAY ENGINEER





Project SU 012(B)  
10 9439-1-70 11-13

