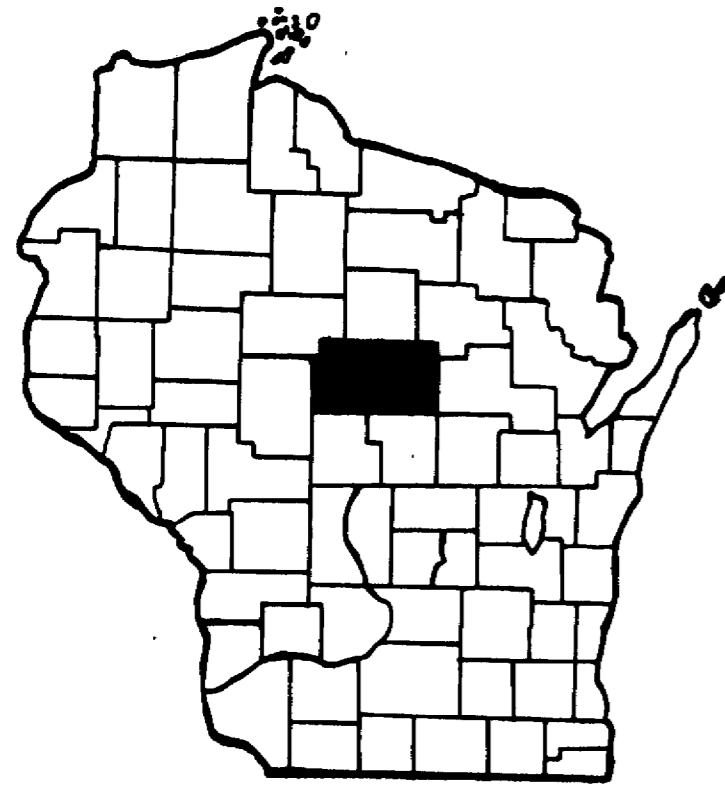
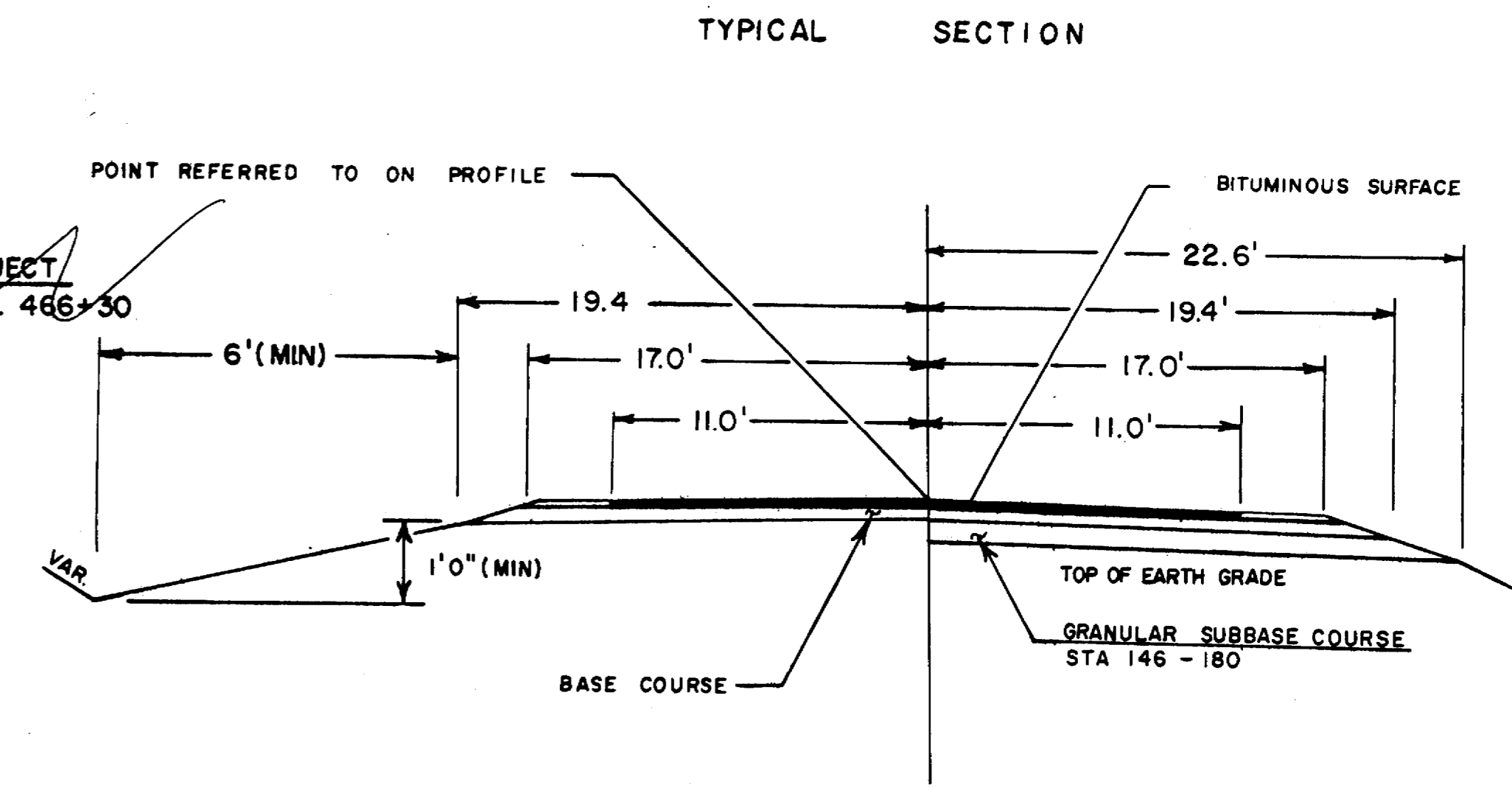
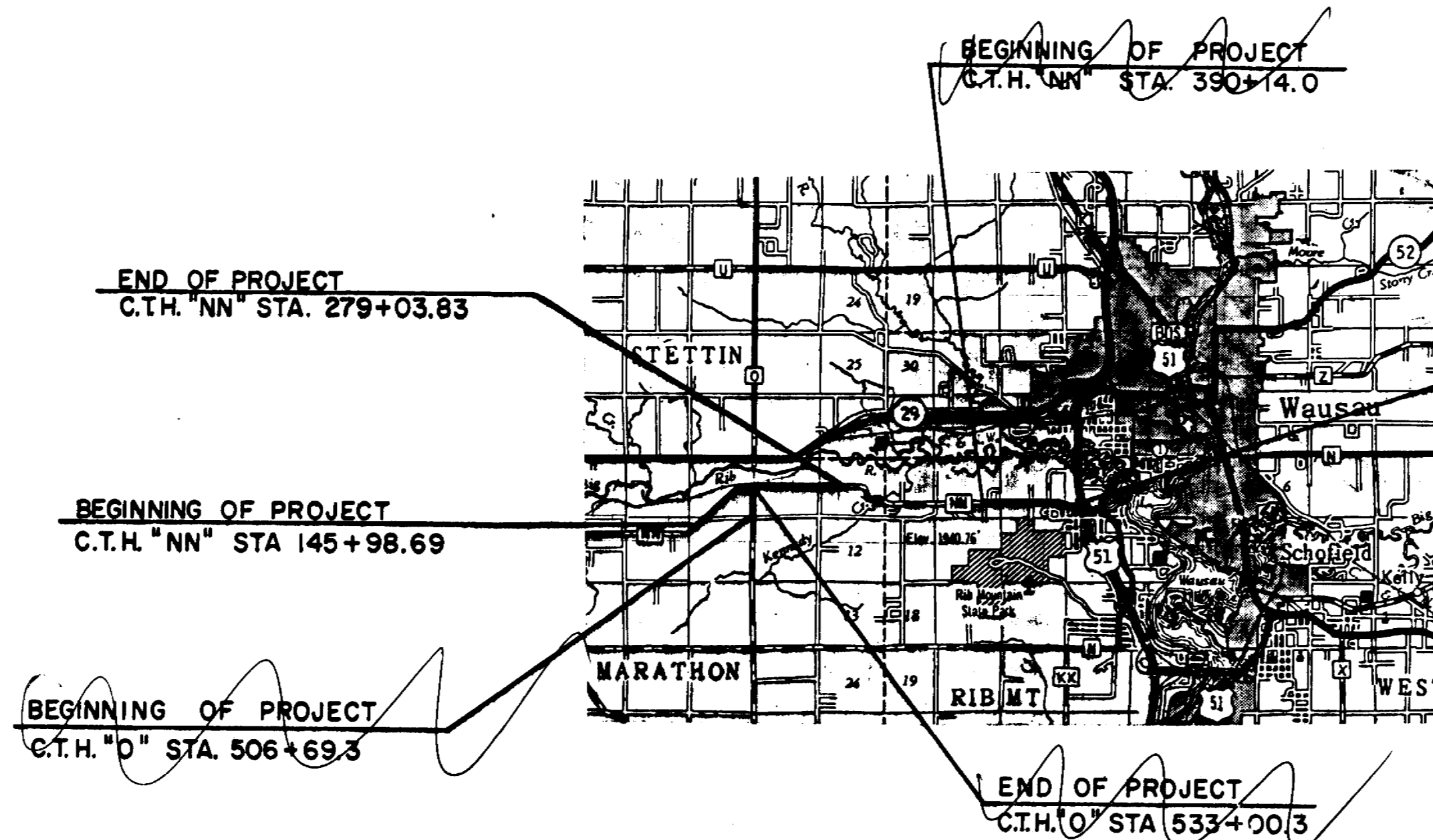


MARATHON COUNTY HIGHWAY DEPARTMENT

PLAN AND PROFILE OF PROPOSED C. T. H. "NN" & "O"



	BERN	HALEY	HAMBURG	BERLIN	MAINE	TEXAS	HEWITT	HARRISON
HOLTON	JOHNSON	WATERBURY	RIB FALLS	STETTIN	WAUSAU	EASTON	POYER	
HULL	FRANKFORT	WISN	CASSEL	MARATHON	WESTON	RINGLE	NORRIS	
ORINGTON	EAU CLAIRE	CLEVELAND	EMMET	MOSHEWIS	KRONENWETTER	REID	ELDERON	
SPENCER	MONILLAN	BAY	GREEN VALLEY	BERGEN	KNOWLTON	QUENTNER	BEVANT	FRANZEN



LEGEND

NEW RIGHT-OF-WAY	—————
PRESENT RIGHT-OF-WAY	- - - - -
PROPERTY LINE	- PL -
WELL	⊠
TELEPHONE CABLE	— T — T —
POWER CABLE	— P — P —
GAS LINE	— G — G —
POWER POLE	⊠
TELEPHONE POLE	⊙
TELEPHONE PEDESTAL	⊙
GUY POLE	⊙
TRANSMISSION TOWER & LINE	⊙ — X —
FENCE	— x — x —
TRAVELED WAY	- - - - -

LENGTH OF CENTERLINE
 C.T.H. "NN" = 2.52 Mi.
 C.T.H. "O" = 0.58 Mi.
 C.T.H. "NN" = 1.44 Mi.

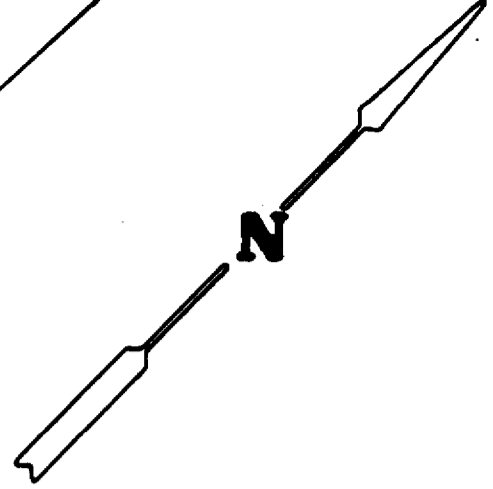
SECTION 9
T.28N.-R.6E.

SECTION 10
T.28N.-R.6E.

SECTION 3
T.28N.-R.6E.

NE-NE

Pl. = 1311.8' S. OF CORNER



D = 0° 30'
 Δ = 3° 10' 30"
 T = 317.58'
 L = 635.00'
 E = 4.40'
 P.C. = 145+98.69 AHEAD =
 156+92.72 BACK
 P.T. = 152+33.69

EQUATION

Pl. = 1226.4' E. OF CORNER

R. ALTENHOFEN

S. LEIST

SW-SW

SE-SW

SE-NE

R. ALTENHOFEN

NW-NW

41.25'

41.25'

SW-NW

41.25'

R. ALTENHOFEN

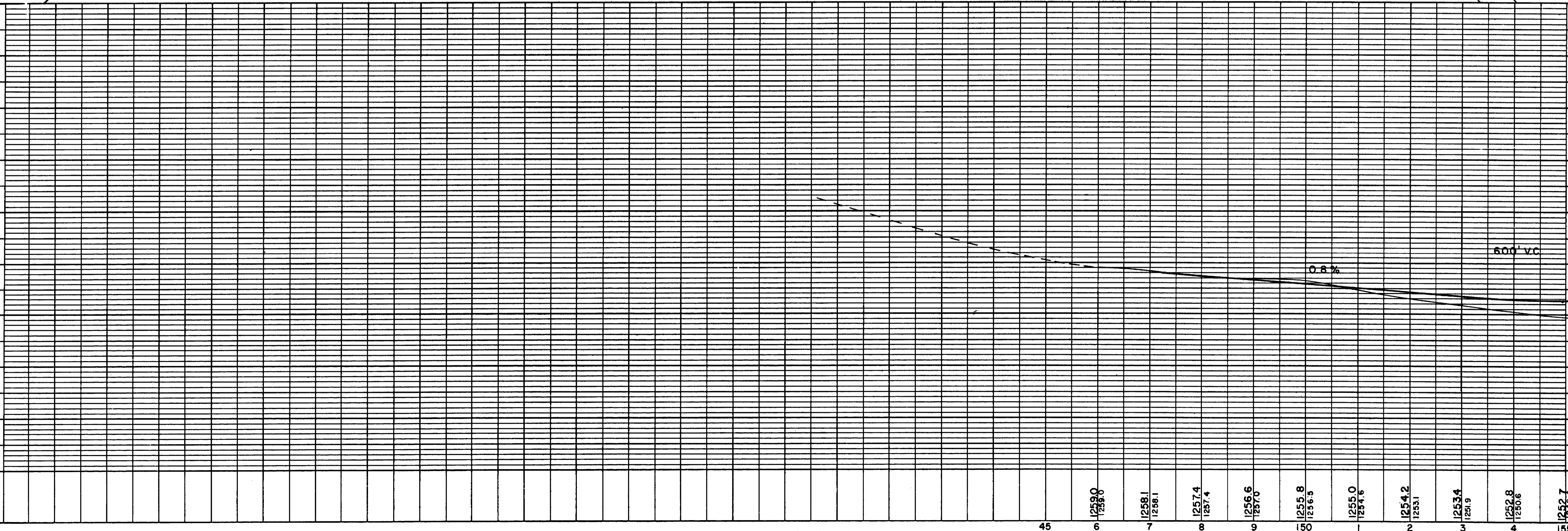
NW-NW

NE-NW

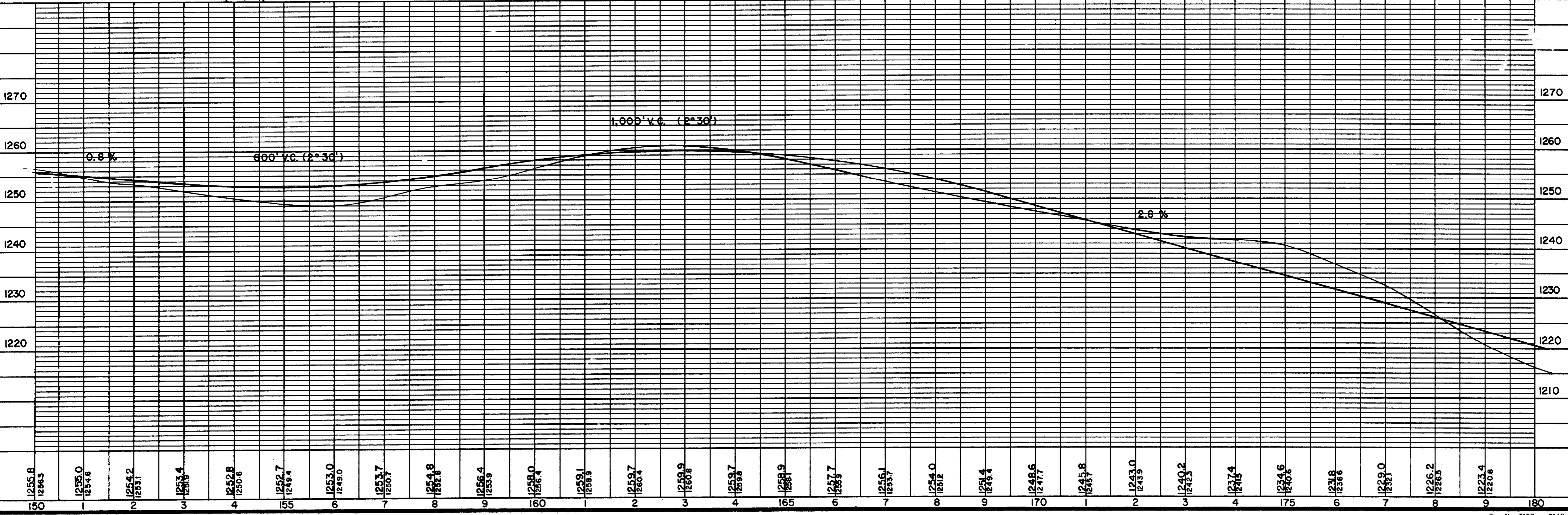
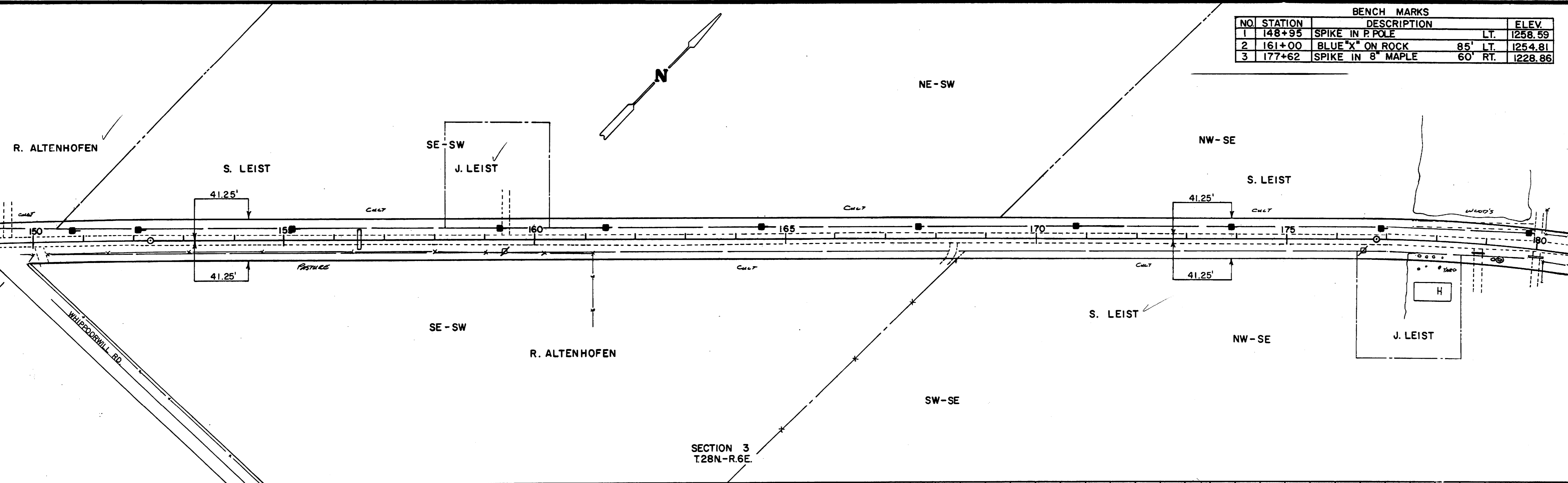
R. ALTENHOFEN
SE-SW

BEGINNING OF PROJECT

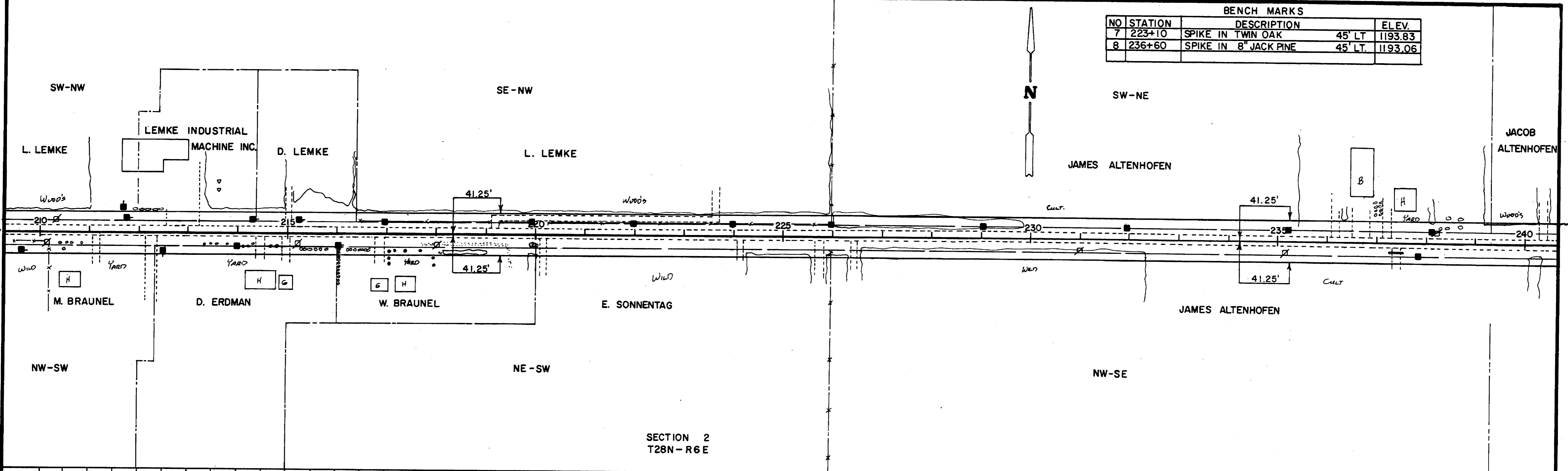
WHIPPOORWILL RD.



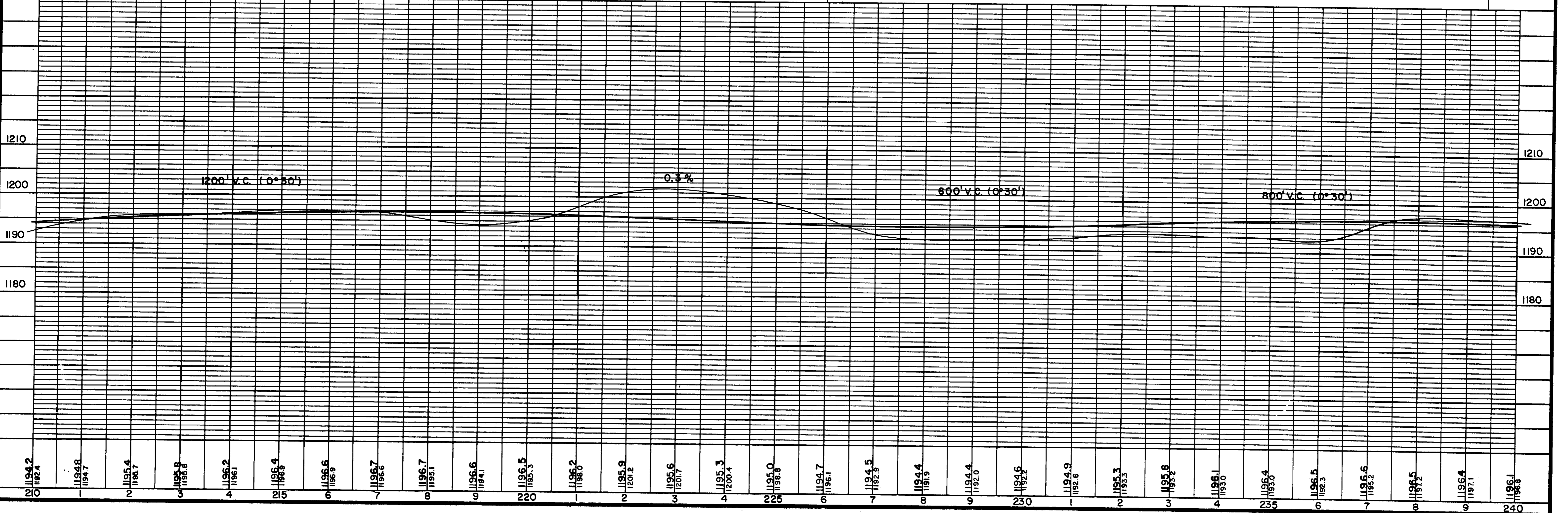
BENCH MARKS			
NO.	STATION	DESCRIPTION	ELEV.
1	148+95	SPIKE IN P. POLE LT.	1258.59
2	161+00	BLUE "X" ON ROCK 85' LT.	1254.81
3	177+62	SPIKE IN 8" MAPLE 60' RT.	1228.86



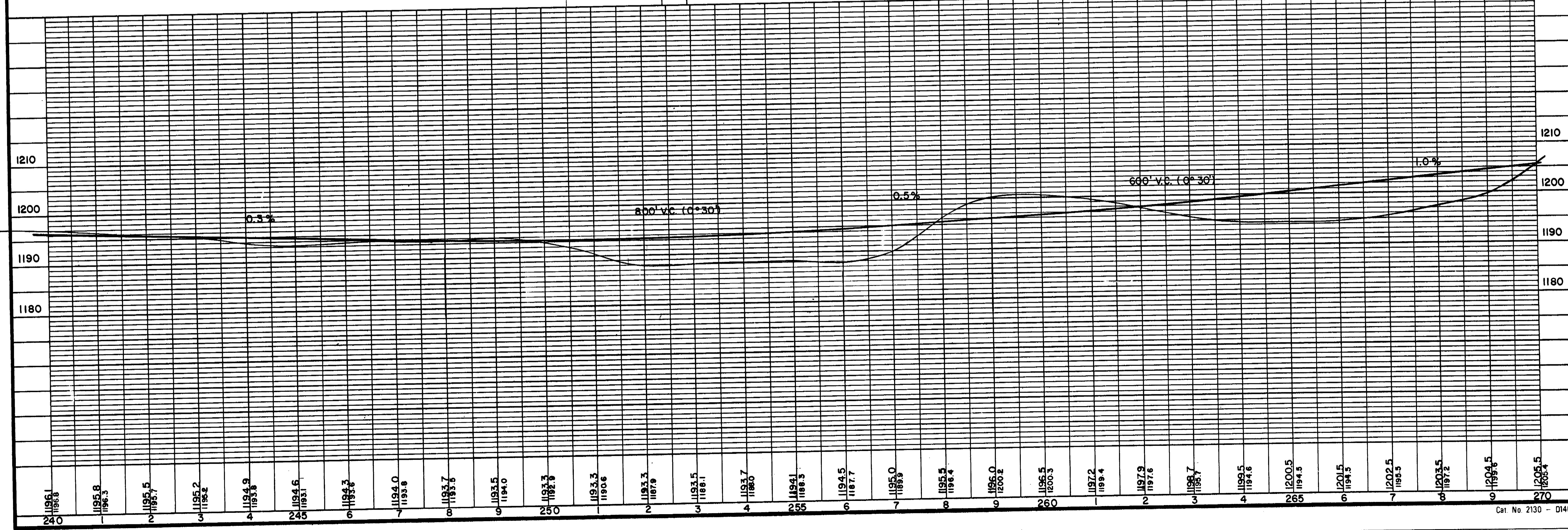
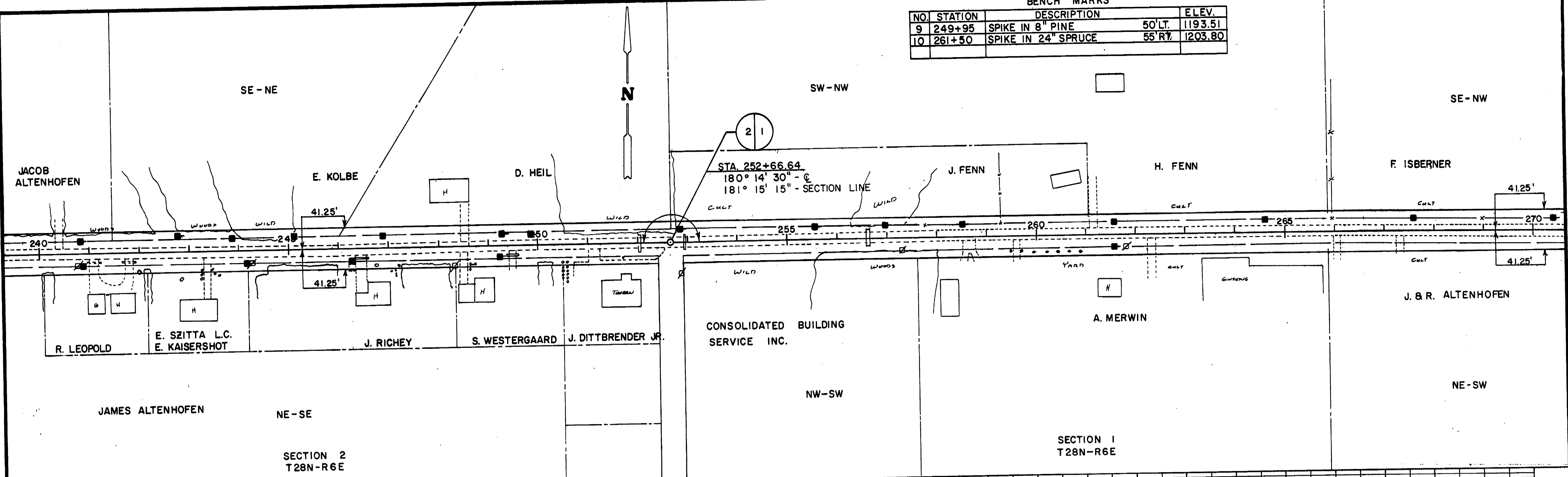
BENCH MARKS			
NO	STATION	DESCRIPTION	ELEV.
7	223+10	SPIKE IN TWIN OAK 45' LT	1193.83
8	236+60	SPIKE IN 8' JACK PINE 45' LT	1193.06



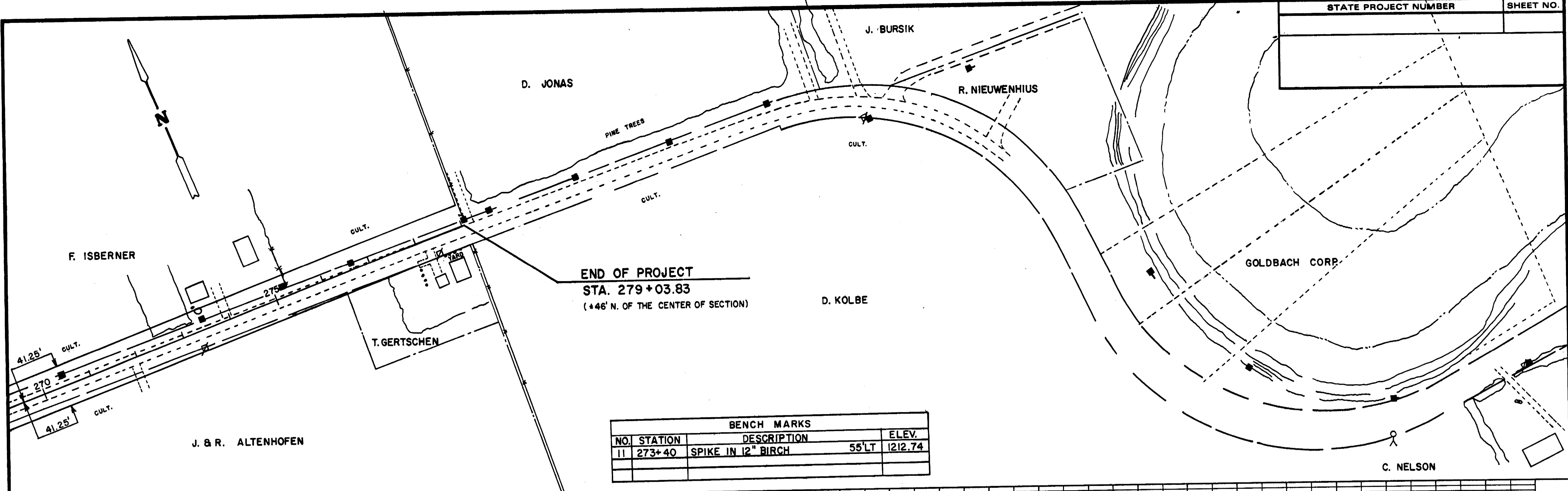
SECTION 2
T28N - R6E



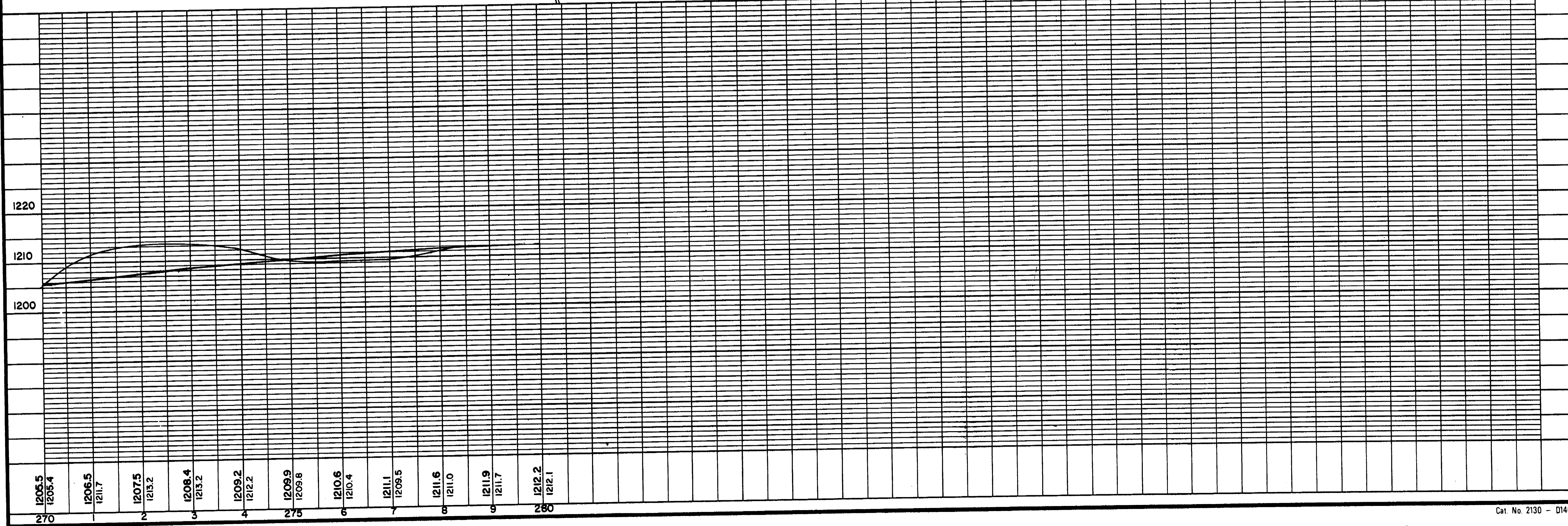
BENCH MARKS				
NO.	STATION	DESCRIPTION		ELEV.
9	249+95	SPIKE IN 8" PINE	50' LT.	1193.51
10	261+50	SPIKE IN 24" SPRUCE	55' RT.	1203.80



STATE PROJECT NUMBER	SHEET NO.



BENCH MARKS			
NO.	STATION	DESCRIPTION	ELEV.
11	273+40	SPIKE IN 12" BIRCH	55'LT 1212.74



1205.5	1206.5	1207.5	1208.4	1209.2	1209.9	1210.6	1211.1	1211.6	1211.9	1212.2
1205.4	1211.7	1213.2	1213.2	1212.2	1209.8	1210.4	1209.5	1211.0	1211.7	1212.1
270		2	3	4	275	6	7	8	9	280