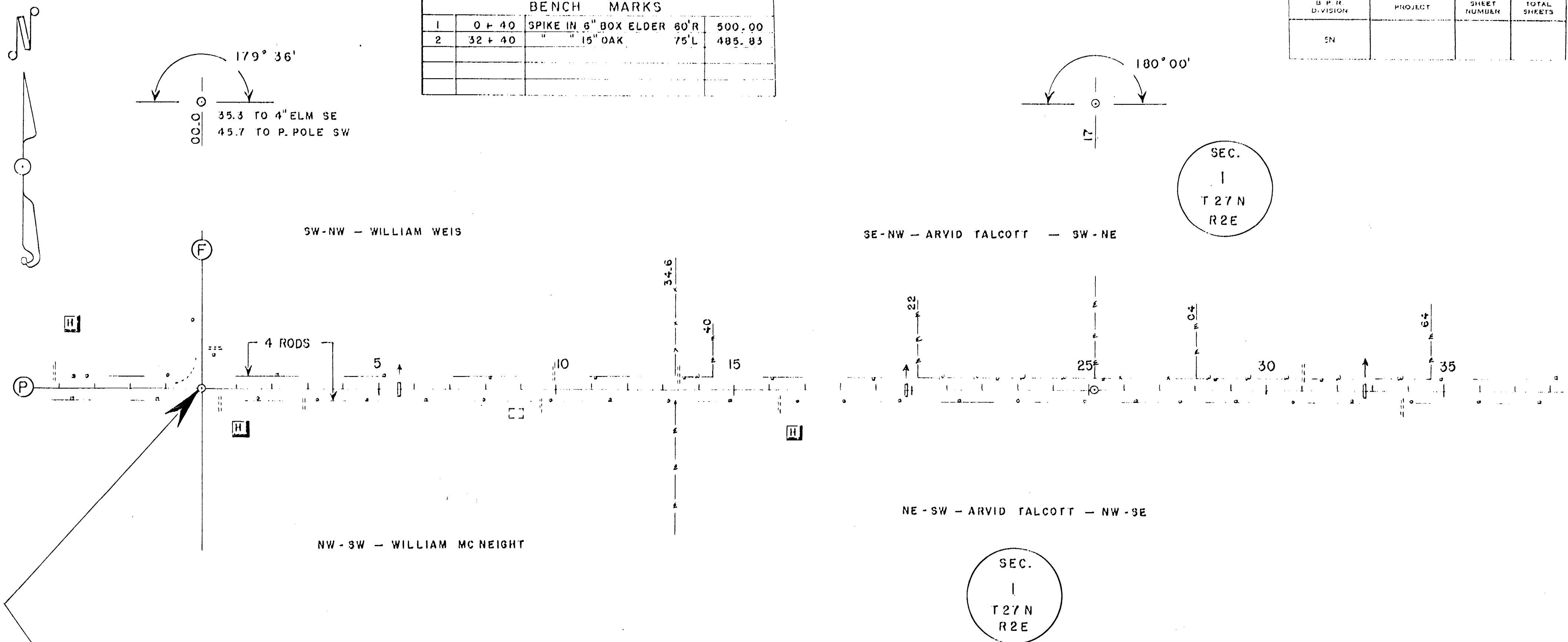
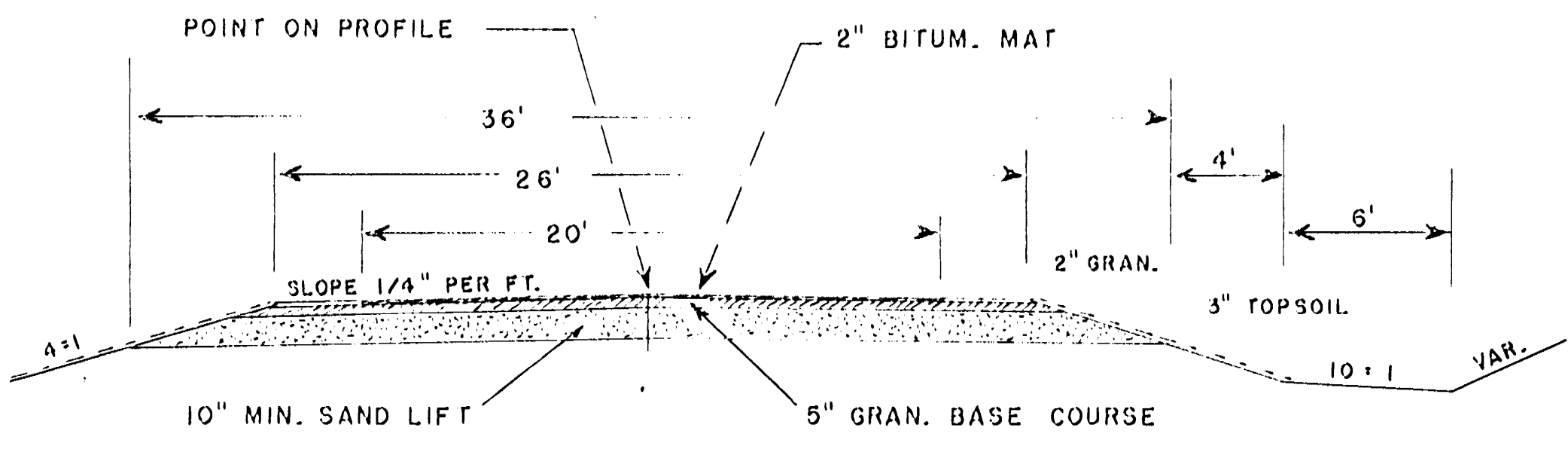


BENCH MARKS			
1	0 + 40	SPIKE IN 6" BOX ELDER	80'R 500.00
2	32 + 40	" 15" OAK	75'L 485.85

DIVISION	PROJECT	SHEET NUMBER	TOTAL SHEETS
5N			

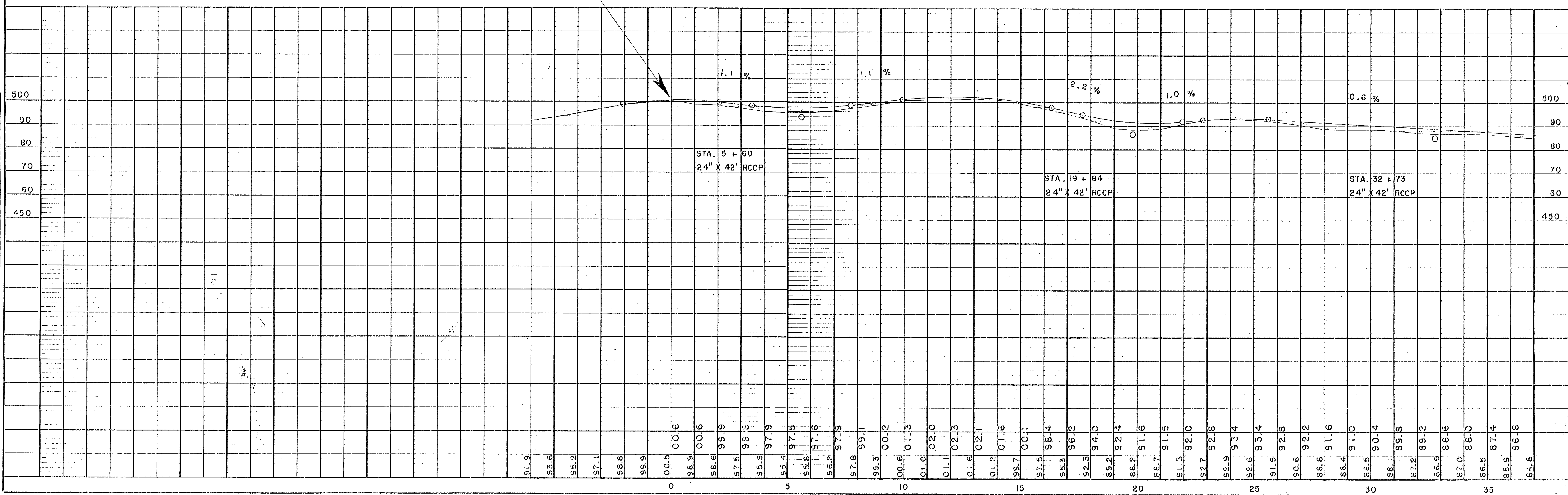
TYPICAL SECTION



BEGINNING OF PROJECT  
STATION 0 + 00

DATE	3-5-54
BY	C. E. C.
PLAN	
SURVEYED	
ALIGNED	
CHECKED	
BT. OF WAY	
NO.	

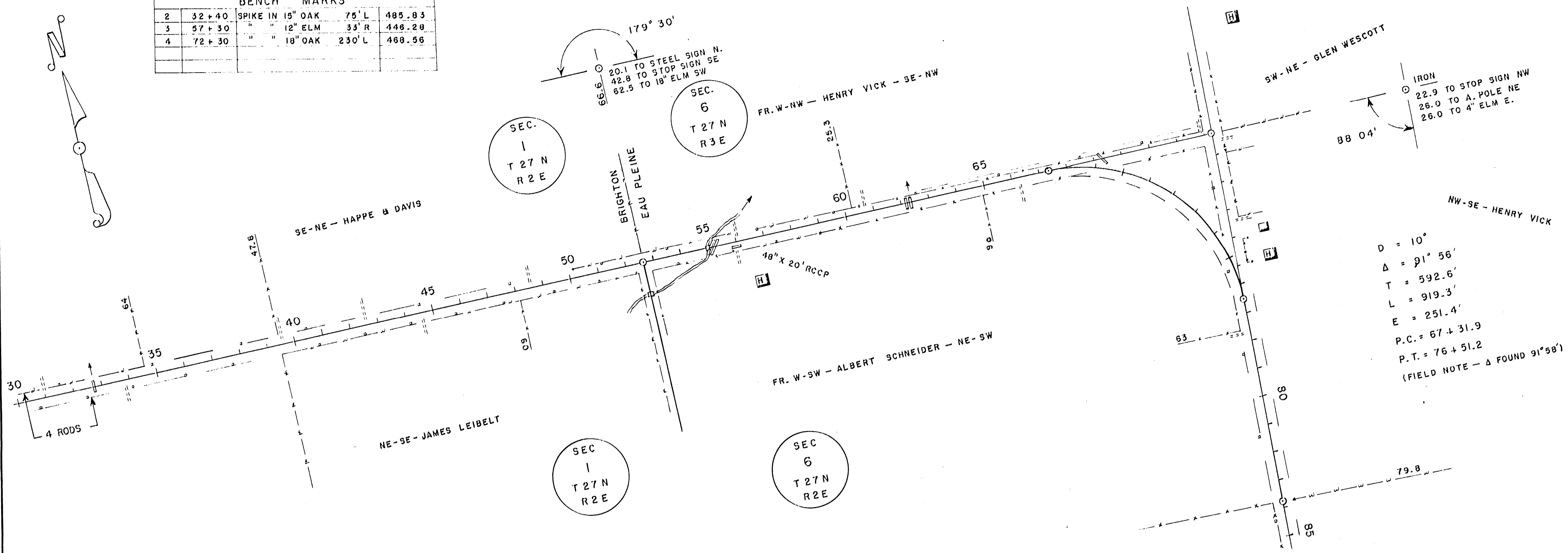
DATE	3-5-54
BY	C. E. C.
PROFILE	
SURVEYED	
GRADES	
CHECKED	
B.M.'S	
NOTED	
STRUCTURE	
NOTATIONS	
GRND.	
NO.	



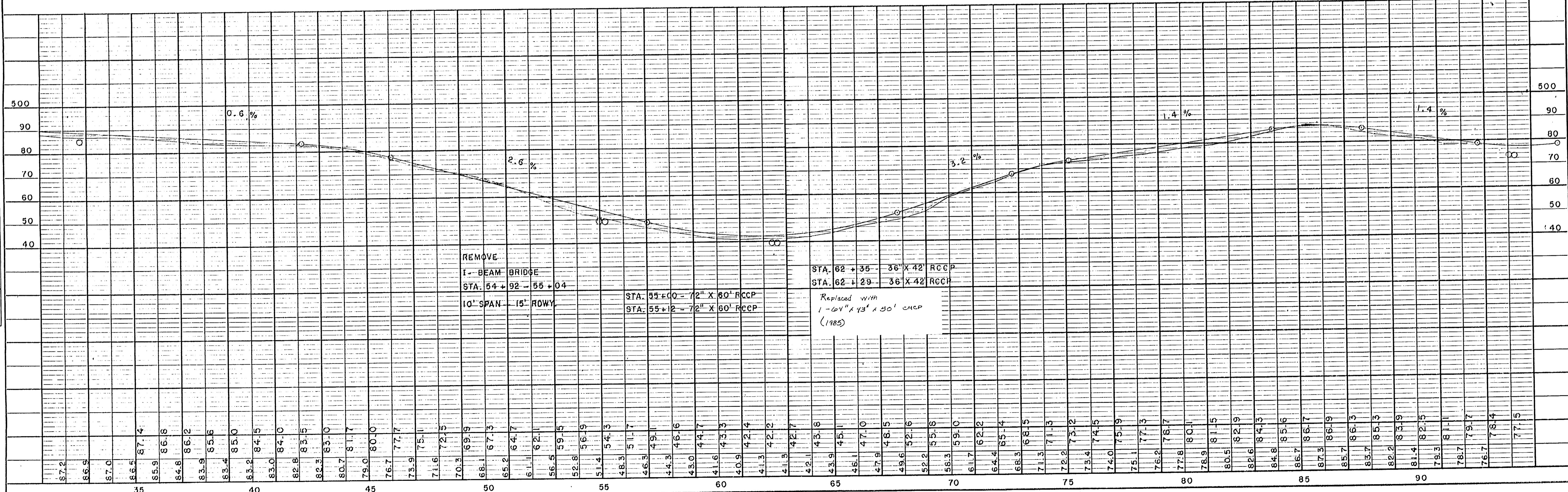
B. P. M. DIVISION	PROJECT	SHEET NUMBER	TOTAL SHEETS
SN			

BENCH MARKS				
2	32+40	SPIKE IN 15" OAK	75' L	485.83
3	57+30	" 12" ELM	33' R	446.28
4	72+30	" 18" OAK	230' L	468.96

PLAN	DATE
DATE 3-54	BY C.E.C.
NO.	NO.



PROFILE	DATE
DATE 3-54	BY C.E.C.
NO.	NO.



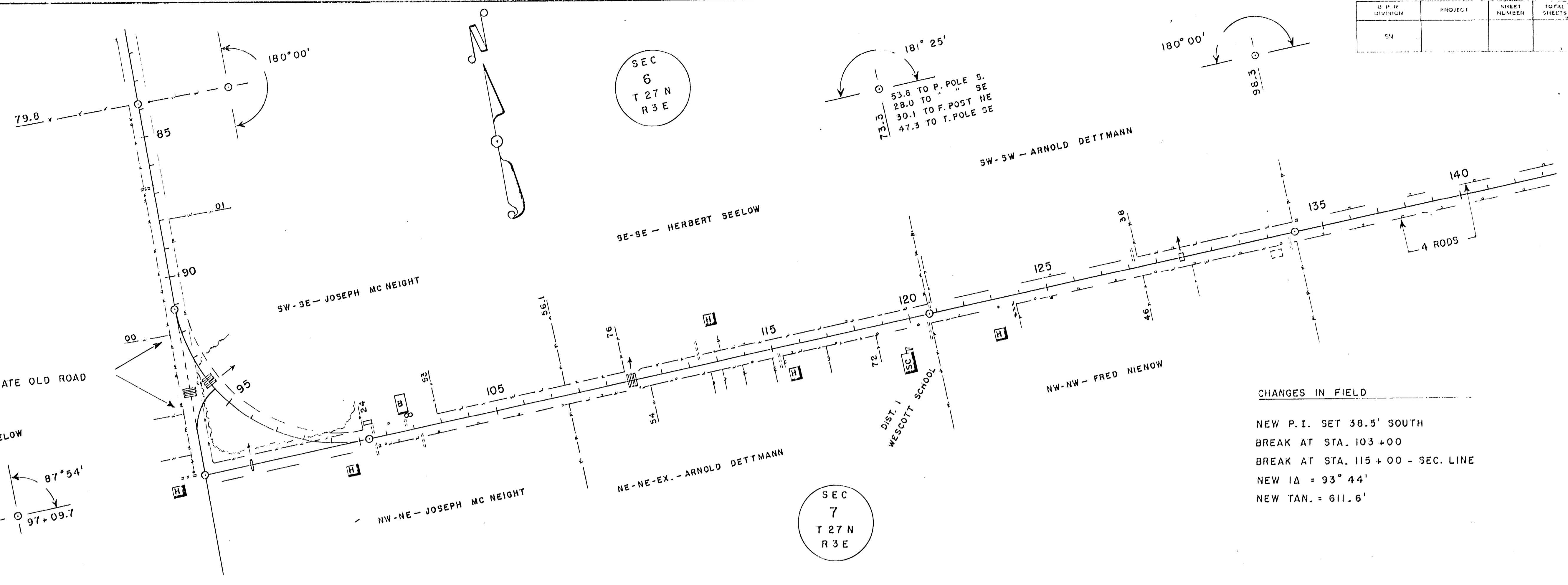
BENCH MARKS				
4	72+30	SPIKE IN 10" OAK	230' L	468.56
5	95+10	" " 20" ELM	125' R	478.31
6	120+73	" " 18" ELM	170' L	462.21
7	129+81	TOP NW WING BRIDGE		450.55

B.P.M. DIVISION	PROJECT	SHEET NUMBER	TOTAL SHEETS
5N			

PLAN	DATE
SURVEYED PLOTTED ALIGNMENT CHECKED BY OF WAY CHECKED	3-54
NOTE BOOK NO.	C.E.C.

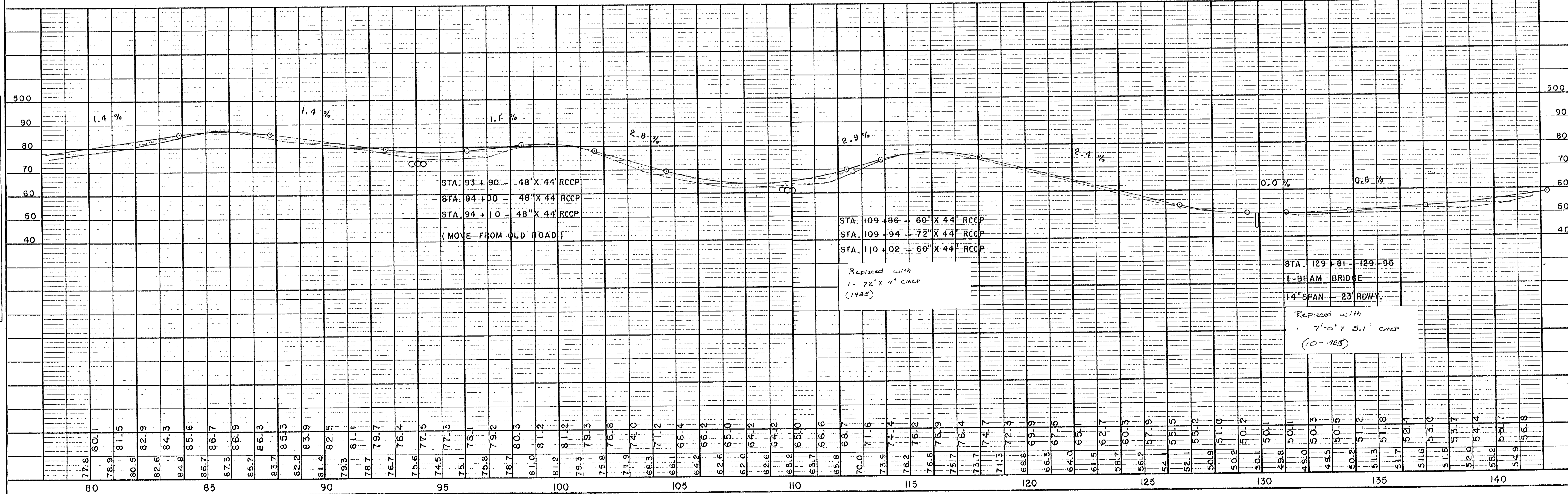
D = 10°  
 Δ = 92° 06'  
 T = 594.4'  
 L = 921.0'  
 E = 252.6'  
 P.C. = 91+15.3  
 P.T. = 100+36.3

22.2 TO F. POST NW  
 36.2 TO " " NE  
 54.5 TO STOP SIGN SE  
 47.8 TO 4" CEDAR SW



CHANGES IN FIELD  
 NEW P.I. SET 38.5' SOUTH  
 BREAK AT STA. 103+00  
 BREAK AT STA. 115+00 - SEC. LINE  
 NEW IA = 93° 44'  
 NEW TAN. = 611.6'

PROFILE	DATE
SURVEYED PLOTTED CHECKED B.M.S. NOTED STRUCTURE NOTATIONS CHD.	3-54
NOTE BOOK NO.	C.E.C.

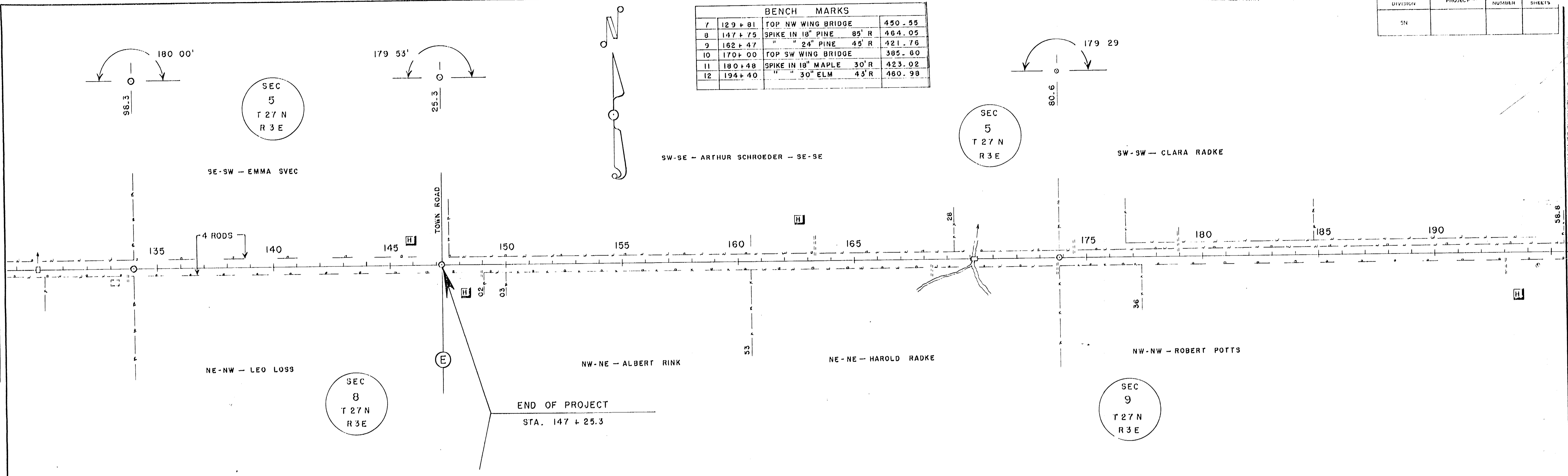


DIVISION	PROJECT	SHEET NUMBER	TOTAL SHEETS
SN			

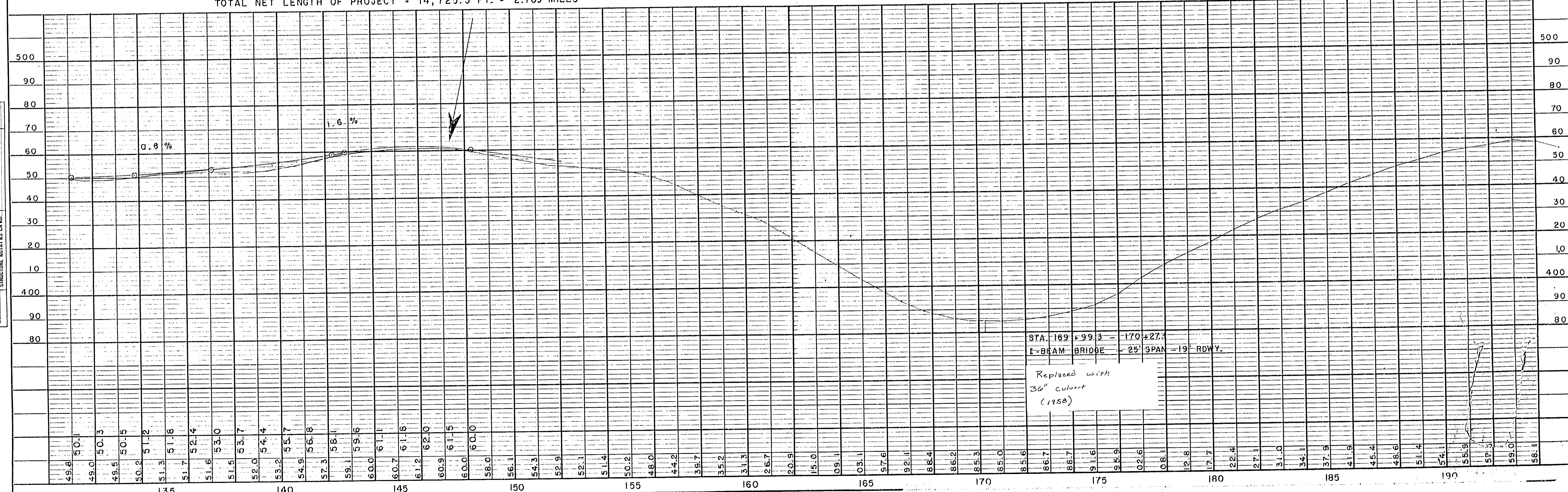
BENCH MARKS			
7	129+81	TOP NW WING BRIDGE	450.55
8	147+75	SPIKE IN 18" PINE 85' R	464.05
9	162+47	" 24" PINE 45' R	421.76
10	170+00	TOP SW WING BRIDGE	385.60
11	180+48	SPIKE IN 18" MAPLE 30' R	423.02
12	194+40	" 30" ELM 43' R	480.98

PLAN	DATE
SURVEYED NOTE BOOK NO.	3-54
ALIGNED CHECKED BY	C.E.C.
BT. OF WAY CHECKED	

PROFILE	DATE
PLANNED NOTE BOOK NO.	3-54
GRADES CHECKED BY	C.E.C.
E. M.S. NOTED ENCLOSURE NOTATIONS COND.	



TOTAL NET LENGTH OF PROJECT = 14,725.3 FT. = 2.789 MILES



STA. 169+99.3 - 170+27.3  
I-BEAM BRIDGE - 25' SPAN - 19' RDWY.  
Replaced with  
36" culvert  
(1952)