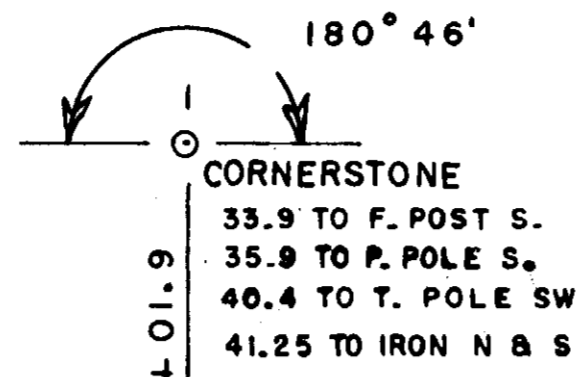
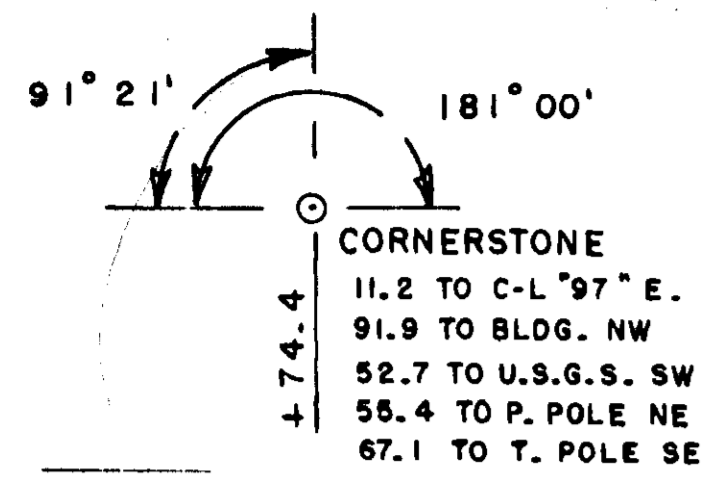


C.T.H. "P"



BENCH MARKS			
420+49	TOP U.S.G.S.	50' R	324.44
36	418+81	SPIKE IN 8" ASH	120' R 321.17
37	431+02	" " 12" ELM	110' L 339.03
38	444+44	" " P. POLE	36' L 327.89

SEC  
31  
T 28 N  
R 4 E

SEC  
6  
T 27 N  
R 4 E

FR. SW - ARNOLD BORNOWSKI

SW-SE - HERBERT TELSCHOW - SE-SE

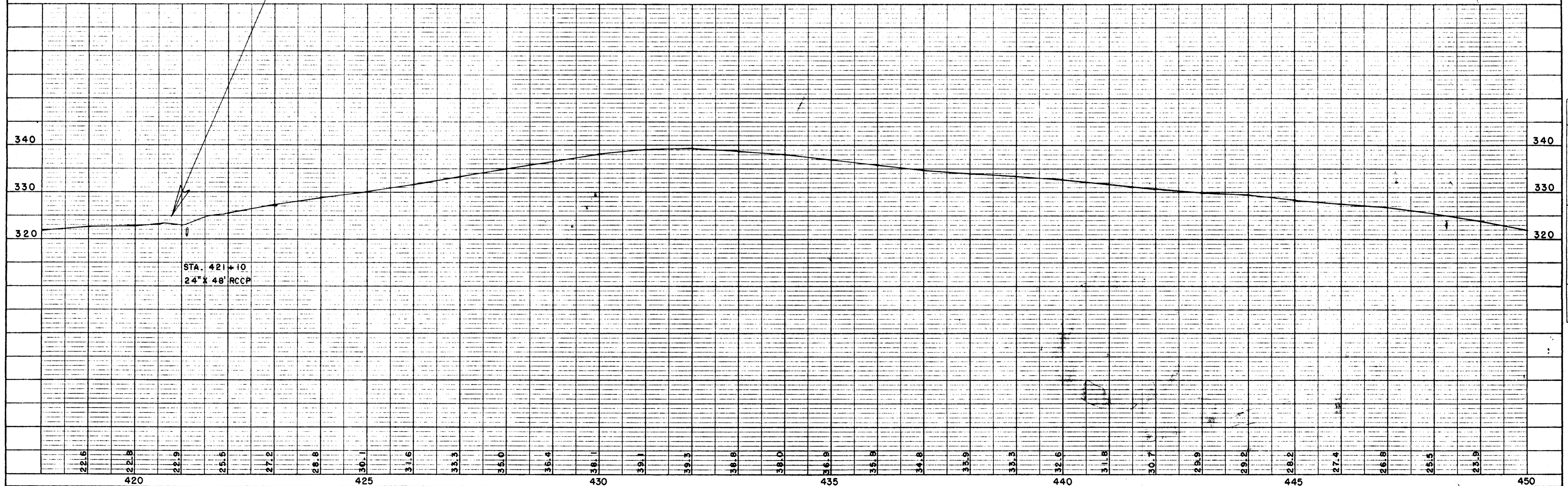
FR. NW - HILBERT REMUS

NW-NE - EARL ELLENBECKER - NE-NE

BEGINNING OF PROJECT  
STA. 420+74.4 = NW COR. OF SEC. 6

STATION 420+74 - 545+00, HAD A NEW SURFACE PLACED IN THE 1985+/- . PATROLMAN BELIEVES THAT THIS SECTION OF ROAD WAS BUILT BY LEAVING THE EXISTING PAVEMENT IN PLACE AND LAYING A GRAVEL LIFT ON TOP OF THE ROAD AND THEN PAVING. THE GRAVEL LIKELY CAME FROM MARATHON COUNTY RIB FALLS PIT. THE ROAD WAS PULVERIZED AND RELAYED IN 2005.

R/W BOUGHT IN 1948



CELESTIAL MAPS CO. 211 N. 2ND ST. MILWAUKEE, WI 53233  
PLATE 1 PLAN PROFILE 1-2  
NO. 1051

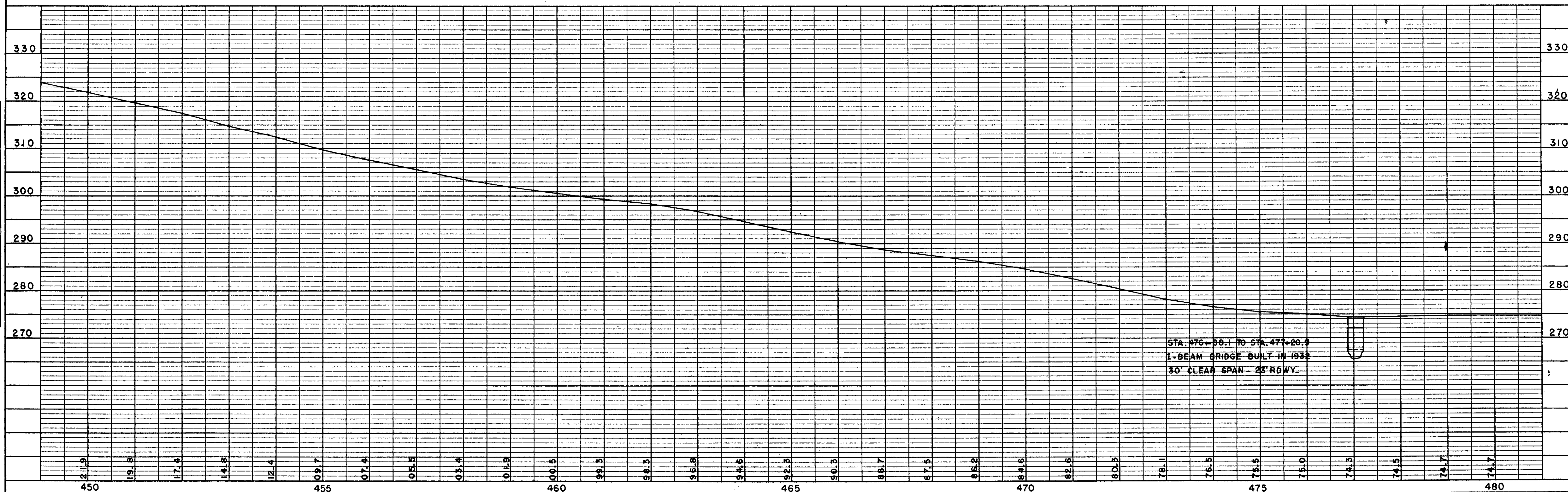
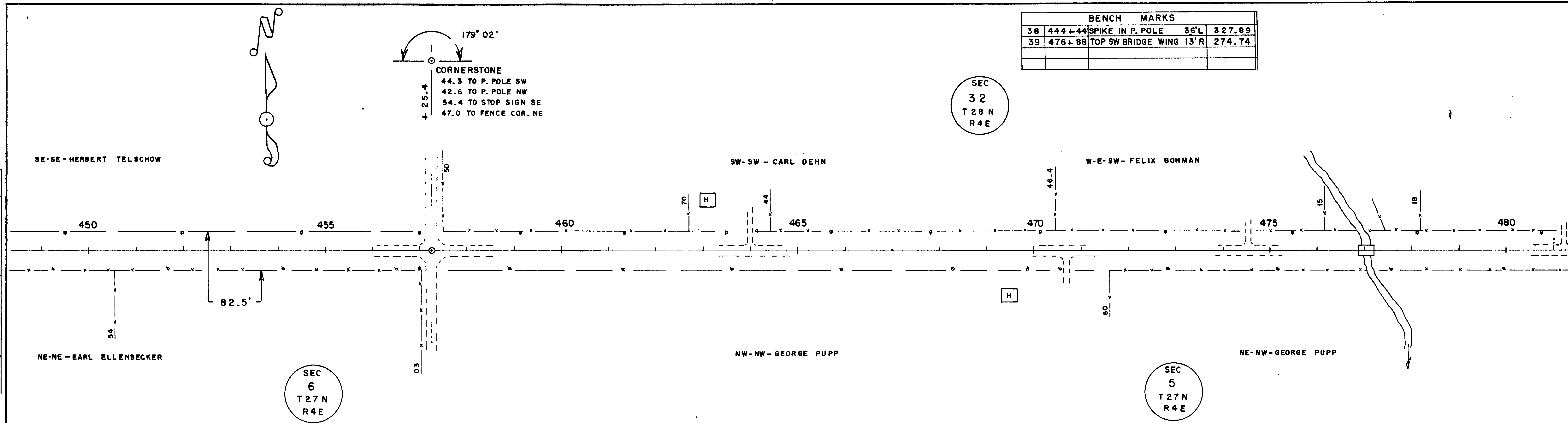
NO. 1051  
BY OR BY CHECKED  
DATE 11/11/11  
SCALE 1" = 40'  
BY  
DATE

NO. 1051  
BY OR BY CHECKED  
DATE 11/11/11  
SCALE 1" = 40'  
BY  
DATE

BENCH MARKS			
38	444+44	SPIKE IN P. POLE	36'L 327.89
39	476+88	TOP SW BRIDGE WING 13'R	274.74

PLAN	SURVEYED	DATE
	PLOTTED	BY
NOTE BOOK	CHECKED	DATE
	BY	NO.

PROFILE	SURVEYED	DATE
	PLOTTED	BY
NOTE BOOK	CHECKED	DATE
	BY	NO.



STA. 476+88.1 TO STA. 477+20.9  
 I-BEAM BRIDGE BUILT IN 1932  
 30' CLEAR SPAN - 23' RDWY.

C.T.H. "P"

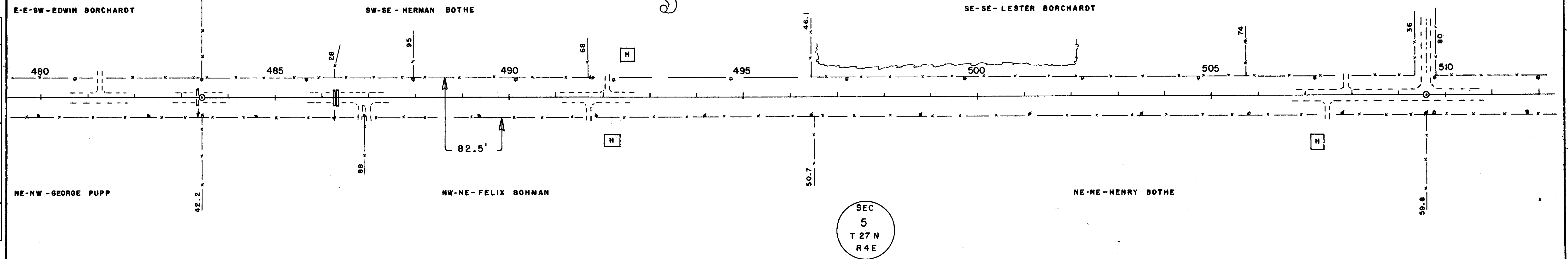
BENCH MARKS				
39	476+88	TOP SW BRIDGE WING	13'R	274.74
40	497+95	SPIKE IN 9" MAPLE	60'L	300.49
41	509+80	" 6" ELM	85'L	323.16

180° 27'  
 CORNERSTONE  
 41.25 TO IRON N & S  
 36.3 TO P. POLE N.  
 37.6 TO P. POLE S.

SEC  
 32  
 T 28 N  
 R 4 E

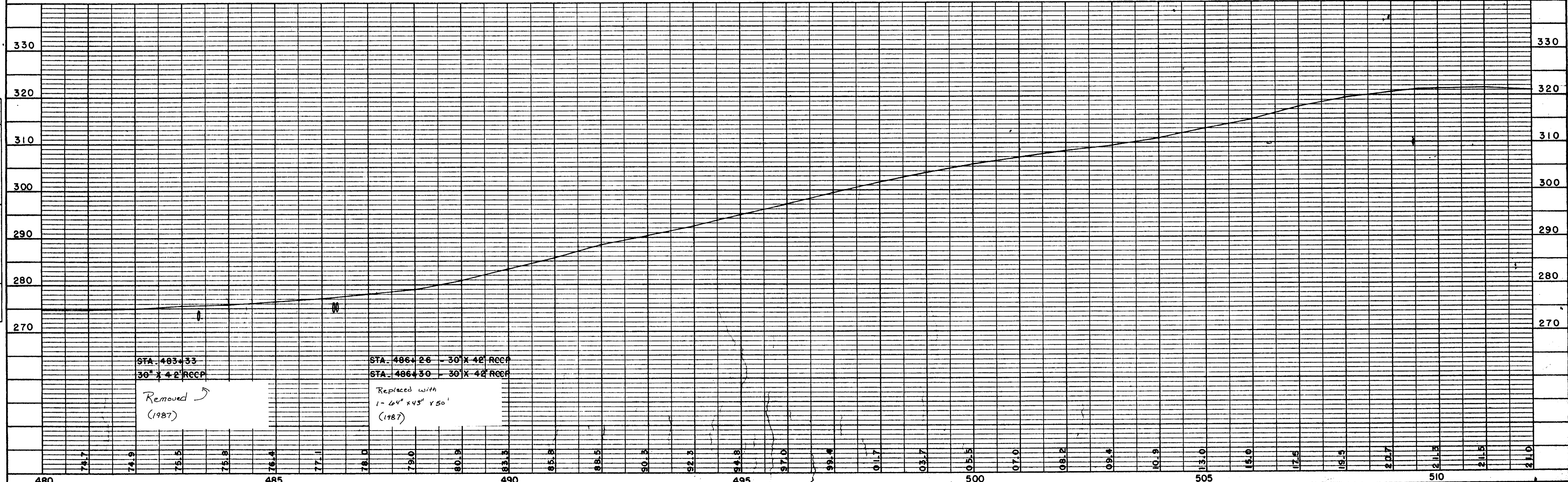
180° 09'  
 CORNERSTONE  
 39.1 TO P. POLE SE  
 39.0 TO " " NE  
 39.0 TO T. POLE S.  
 46.9 TO STOP SIGN NW  
 48.3 TO FENCE COR. NW

DATE: 8-82  
 BY: C.E.C.  
 SURVEYED: [ ]  
 ALIGNED: [ ]  
 CHECKED: [ ]  
 NOTE BOOK NO. [ ]  
 RT. OF WAY CHECKED: [ ]



SEC  
 5  
 T 27 N  
 R 4 E

DATE: 3-88  
 BY: C.E.C.  
 SURVEYED: [ ]  
 GRADES CHECKED: [ ]  
 B.M. NOTED: [ ]  
 STRUCTURE NOTATIONS CHECKED: [ ]



STA. 483+33  
 30" x 42" RCCP  
 Removed  
 (1987)

STA. 486+26 - 30" x 42" RCCP  
 STA. 486+30 - 30" x 42" RCCP  
 Replaced with  
 1- 64" x 43" x 50"  
 (1987)

C. T. H. "P"

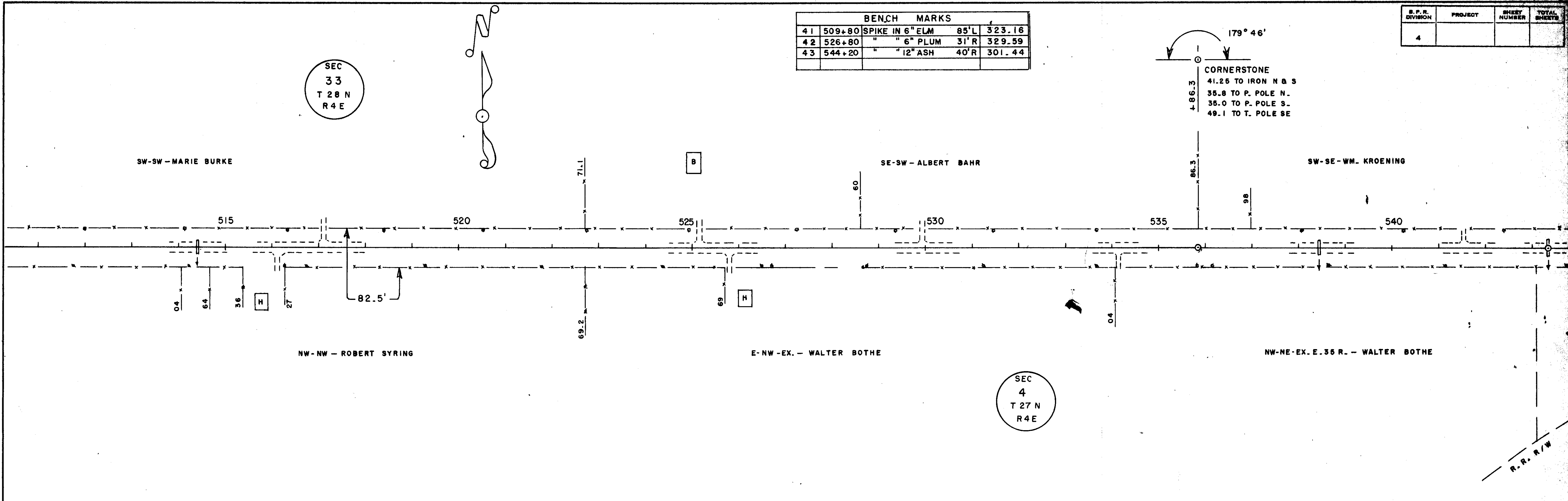
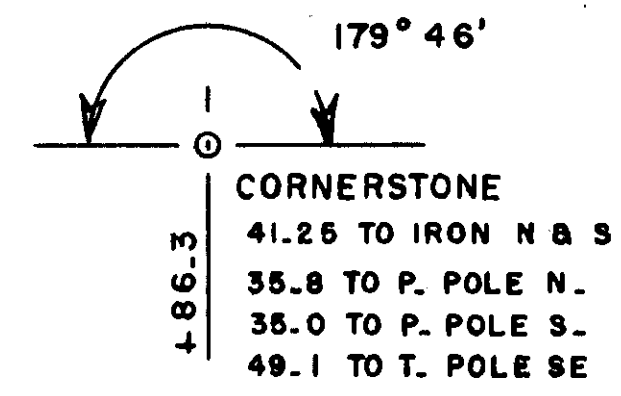
DATE: 4-88  
 BY: C.E.C.  
 SURVEYED: [ ]  
 ALIGNED: [ ]  
 RT. OF WAY CHECKED: [ ]  
 NOTE BOOK NO.:

DATE: 5-88  
 BY: C.E.C.  
 SURVEYED: [ ]  
 GRADES CHECKED: [ ]  
 R. M. NOTED: [ ]  
 STRUCTURE NOTATIONS CHD.:

BENCH MARKS			
41	509+80	SPIKE IN 6" ELM	85'L 323.16
42	526+80	" 6" PLUM	31'R 329.59
43	544+20	" 12" ASH	40'R 301.44

S. P. R. DIVISION	PROJECT	SHEET NUMBER	TOTAL SHEETS
4			

SEC  
33  
T 28 N  
R 4 E



BRUNING NO. 601

PLATE 1 - PLAN - PROFILE C. P. R. & E. MADE AND PRINTED IN U.S.A. CHARLES BRUNING COMPANY, INC.

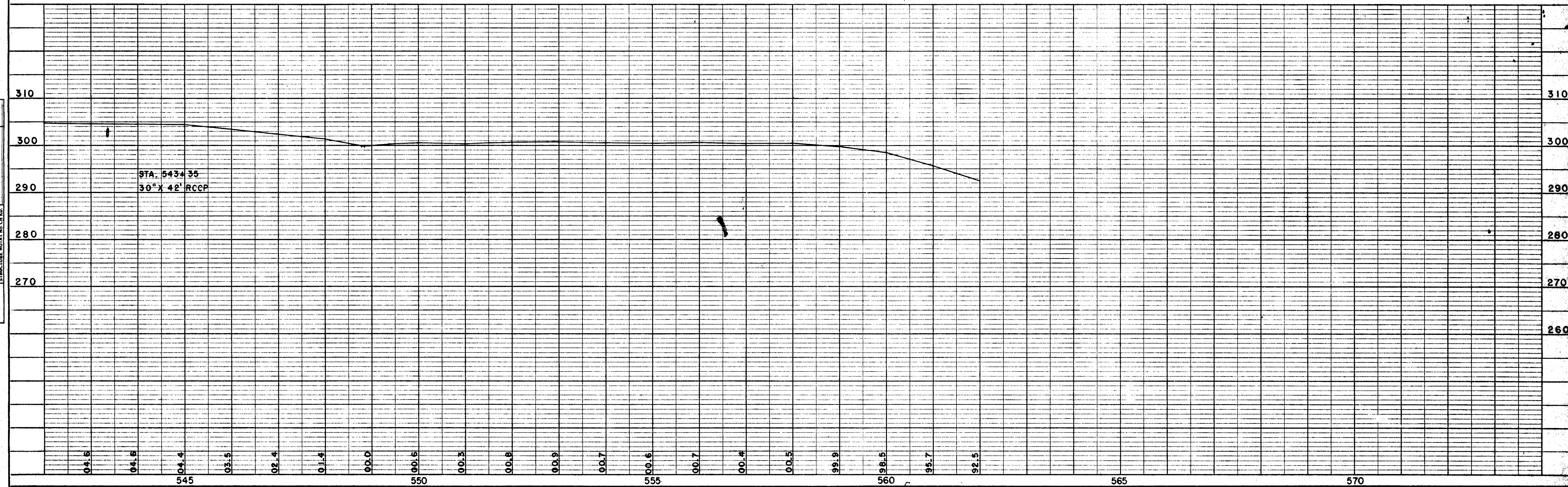
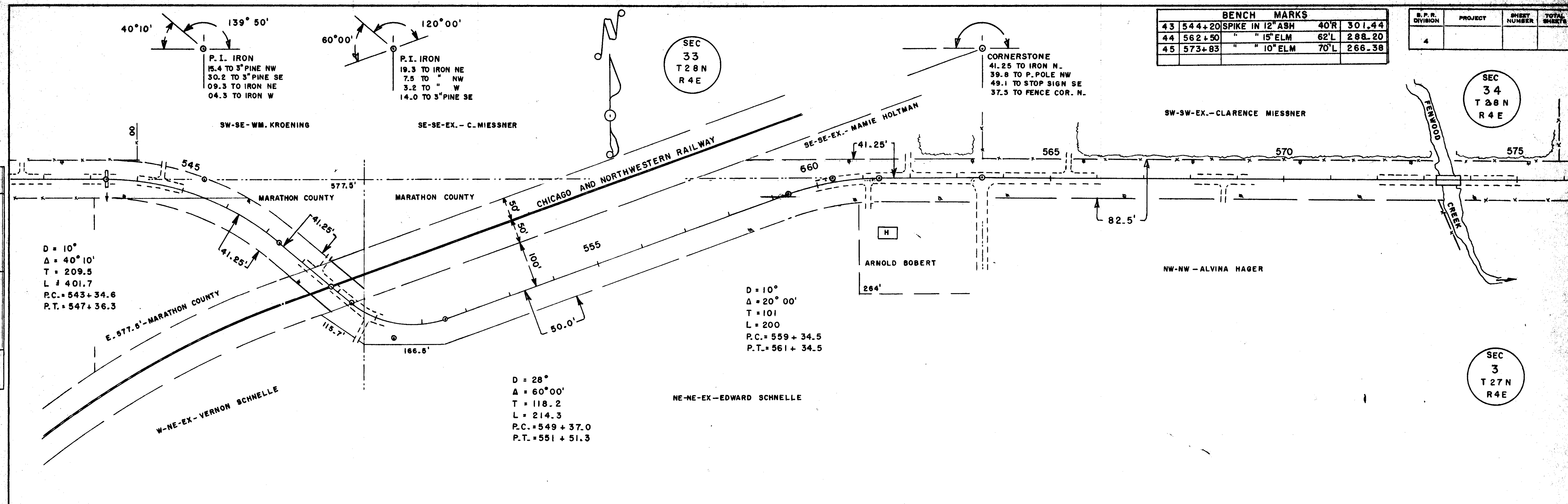
C. T. H. "P"

BENCH MARKS			
43	544+20	SPIKE IN 12" ASH	40'R 301.44
44	562+50	" " 15" ELM	62'L 288.20
45	573+83	" " 10" ELM	70'L 266.38

B. P. R. DIVISION	PROJECT	SHEET NUMBER	TOTAL SHEETS
4			

DATE 4-88  
BY C.E.C.  
SURVEYED  
ALIGNED CHECKED  
NOISE BOOK  
RT. OF WAY CHECKED  
NO.

DATE 5-88  
BY C.E.C.  
SURVEYED  
ALIGNED CHECKED  
NOISE BOOK  
RT. OF WAY CHECKED  
NO.



BRUNING NO. 691

PLATE 1-PLAN-PROFILE O. P. R. & E.  
MADE AND PRINTED IN U.S.A.  
CHARLES BRUNING COMPANY, INC.