

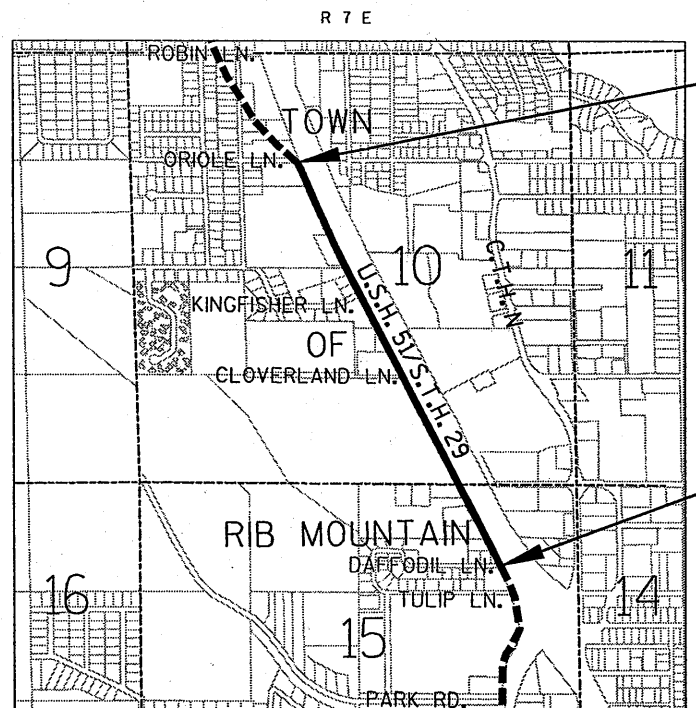
CONVENTIONAL SIGNS AND ABBREVIATIONS

A.P.	ACCESS POINT
AC.	ACRES
AG.	AGRICULTURAL
A.H.	AHEAD
ALUM.	ALUMINUM
ET.AL.	AND OTHERS
BK.	BACK
ASPH.	ASPHALT
C.E.	COMMERCIAL ENTRANCE
C.M.	CABLE MARKER
CL.	CENTERLINE
C.T.H.	COUNTY TRUNK HIGHWAY
C.S.M.	CERTIFIED SURVEY MAP
CONC.	CONCRETE
COR.	CORNER
CULV.	CULVERT
d/b/a	DOING BUSINESS AS
FDN.	FOUNDATION
F.E.	FIELD ENTRANCE
FRL.	FRACTIONAL
G.	GARAGE
G.M.	GAS MARKER
G.P.	GAS PUMPS
GRAV.	GRAVEL
HSE.	HOUSE
ha	HECTARES
I.P.	IRON PIPE OR PIN
km	KILOMETER
LT.	LEFT
L	LENGTH OF CURVE
L.C.	LONG CHORD OR LAND CONTRACT
L.C.B.	LONG CHORD BEARING
M.H.	MANHOLE
m	METERS
MON.	MONUMENT
O.L.	OUTLOT
P.	PAGE
P.D.	PRIVATE DRIVEWAY
P.E.	PRIVATE ENTRANCE
P.K.	PARKER-KALON
P.L.E.	PERMANENT LIMITED EASEMENT
P.C.	POINT OF CURVATURE
P.I.	POINT OF INTERSECTION
P.T.	POINT OF TANGENCY
P.L.	PROPERTY LINE
R	RADIUS OR RANGE
R.R.	RAILROAD
R	REFERENCE LINE
R.D.E.	RESTRICTED DEVELOPMENT EASEMENT
RT.	RIGHT
R/W	RIGHT OF WAY
SEC.	SECTION
S	SHED
m2	SQUARE METER
S.T.H.	STATE TRUNK HIGHWAY
STA.	STATION
T	TANGENT LENGTH OF CURVE OR TOWN
TAV.	TAVERN
T.L.E.	TEMPORARY LIMITED EASEMENT
USH	UNITED STATES HIGHWAY
VOL.	VOLUME
X	EAST COORDINATE (GRID)
Y	NORTH COORDINATE (GRID)
N	NORTH COORDINATE (GROUND) OR NORTH
E	EAST COORDINATE (GROUND), EAST OR EXTERNAL
Δ	CENTRAL ANGLE OR DELTA

---	STATE LINE
---	COUNTY LINE
---	TOWN OR RANGE LINE
---	SECTION LINE
---	QUARTER LINE
---	SIXTEENTH LINE
---	PROPOSED OR NEW R/W LINE
---	EXISTING R/W LINE
---	LOT LINE
P.L. + 58.1	PROPERTY LINE
◆◆◆◆	NO ACCESS (By Previous Acquisition)
	NO ACCESS (By Acquisition)
●●●●	NO ACCESS (By Statutory Authority)
L---	LIMITED EASEMENT (Temporary or Permanent)
////	CORPORATE LIMITS

	SECTION CORNER	(Size) W	WATER
	RIGHT OF WAY POINT (NOT MONUMENTED)	(Size) G	GAS
	RIGHT OF WAY POINT (MONUMENTED)	T	TELEPHONE OR TELEGRAPH
	RECOVERED IRON PIN/PIPE (Type)	E	ELECTRIC
	TRIANGULATION POINT OR HORIZONTAL CONTROL STATION	TV	CABLE TELEVISION
	INLET	FO	FIBER OPTIC
	HYDRANT	(Size) SAN	SANITARY SEWER
	TELEPHONE POLE	(Size) SS	STORM SEWER
	POWER POLE		NOTATION FOR COMBUSTIBLE FLUIDS
	RIGHT OF WAY POINT NUMBER		SERVICE PEDESTAL
			SILO, MANHOLE OR WELL, ETC.

	RAILROAD
	BRIDGE
	BUILDING
	FOUNDATION OR RUINS
	FENCE
	MARSH AREA
	LAKE OR POND
	WOODED OR SHRUB AREA
	TREE



END RELOCATION ORDER
STA. 143+00.00
 Y= 189,919.2389
 X= 272,955.5239
 1091.10 FEET NORTH AND 2085.23 FEET EAST OF THE WEST QUARTER CORNER OF SECTION 10, T28N, R7E

BEGIN RELOCATION ORDER
STA. 90+57.34
 Y= 185,236.4073
 X= 275,311.2978
 962.61 FEET SOUTH AND 934.94 FEET WEST OF THE SOUTHEAST CORNER OF SECTION 10, T28N, R7E

LAYOUT SCALE
 0 0.5 mi
 TOTAL NET LENGTH OF CENTERLINE = 0.993 mi

NOTES:
 COORDINATES AND BEARINGS ON THIS PLAT ARE ORIENTED TO THE WISCONSIN COUNTY COORDINATE SYSTEM, MARATHON COUNTY (ENGLISH) NAD 83, 1991 ADJUSTMENT. ALL DISTANCES ARE GROUND LENGTH.
 RIGHT OF WAY MONUMENTS ARE TYPE II AND ARE PLACED PRIOR TO OR AT THE TIME OF LAND TITLE TRANSFER.
 RIGHT OF WAY BOUNDARIES ARE DEFINED WITH COURSES OF THE PERIMETER OF THE HIGHWAY LANDS REFERENCED TO THE U.S. PUBLIC LAND SURVEY OR OTHER SURVEYS OF PUBLIC RECORD.

R/W PROJECT NUMBER	6675-00-01	SHEET NUMBER	4.1	TOTAL SHEETS	7
FEDERAL PROJECT NUMBER					
PLAT OF RIGHT OF WAY REQUIRED FOR					
WEST ARTERIAL					
DAFFODIL LN.- ORIOLE LN.					
WEST ARTERIAL			MARATHON COUNTY		

ACCEPTED FOR
 MARATHON COUNTY
 12/12/02 *Grant Smith*
 (Date) (Signature & Title of Official)

ORIGINAL PLANS PREPARED BY

1-8-2002 *Duane A. Holman*
 (Date) (Signature)

REVISION DATE
 12-12-2002 N.C.

STATE OF WISCONSIN
 DEPARTMENT OF TRANSPORTATION

APPROVED FOR DISTRICT OFFICE:
 DATE: _____

SCHEDULE OF LANDS & INTERESTS REQUIRED

AREAS SHOWN IN THE TOTAL ACRES COLUMN MAY BE APPROXIMATE AND ARE DERIVED FROM TAX ROLLS OR OTHER AVAILABLE SOURCES AND MAY NOT INCLUDE LANDS OF THE OWNER WHICH ARE NOT CONTIGUOUS TO THE AREA TO BE ACQUIRED.

* = CALCULATED FROM DESIGN FILE

PARCEL NUMBER	SHEET NUMBER	OWNER (S)	INTEREST REQUIRED	TOTAL ACRES	R/W ACRES REQUIRED OR S.F.			TOTAL ACRES REM.	P.L.E. ACRES	T.I. ACRES
					NEW	EXISTING	TOTAL			
1	4.4	RONALD C. WIMMER	FEE, T.I., ACCESS RIGHTS	0.88* AC.	0.37 AC.	-	0.37 AC.	0.51 AC.	-	0.08 AC.
2	4.4	JOHANSSON INVESTMENTS, LLC	FEE	0.48 AC.	0.08 AC.	-	0.08 AC.	0.40 AC.	-	-
3	4.4	EMIL S. JOHNSON & SHIRLEY JOHNSON	FEE, T.I., ACCESS RIGHTS	1.32 AC.	0.15 AC.	-	0.15 AC.	1.17 AC.	-	0.03 AC.
6	4.4	MARK E. JOHNSON & SARAH M. JOHNSON	FEE, T.I., ACCESS RIGHTS	1.72 AC.	0.09 AC.	-	0.09 AC.	1.63 AC.	-	0.07 AC.
7	4.4	EMIL S. JOHNSON & SHIRLEY A. JOHNSON	FEE, T.I., ACCESS RIGHTS	14.24* AC.	0.06 AC.	-	0.06 AC.	14.18 AC.	-	0.04 AC.
8	4.4	JAY J. SPIEGEL & MARLENE J. SPIEGEL	FEE, T.I., ACCESS RIGHTS	1.42* AC.	0.16 AC.	-	0.16 AC.	1.26 AC.	-	0.07 AC.
9	4.5	RONALD C. WIMMER & JOAN E. WIMMER	FEE, T.I., ACCESS RIGHTS	69.09 AC.	1.46 AC.	-	1.46 AC.	67.63 AC.	-	0.28 AC.
11	4.6	AALL	FEE, T.I., ACCESS RIGHTS	3.00* AC.	0.43 AC.	-	0.43 AC.	2.57 AC.	-	0.16 AC.
12	4.6	RIB MOUNTAIN CONGREGATION OF JEHOVAHS WITNESSES INC	FEE, T.I., ACCESS RIGHTS	0.53* AC.	0.19 AC.	-	0.19 AC.	0.34 AC.	-	0.04 AC.
13	4.6	WAUSAU CONGREGATION OF JEHOVAHS WITNESSES INC	FEE, T.I., ACCESS RIGHTS	1.91 AC.	0.10 AC.	-	0.10 AC.	1.81 AC.	-	0.03 AC.
14	4.6	WESTGATE-SHULTZ, LLC	FEE, P.L.E., T.I., ACCESS RTS.	2.46 AC.	0.33 AC.	-	0.33 AC.	2.13 AC.	0.03 AC.	0.20 AC.
16	4.6	MILTON AVENUE ASSOCIATES	FEE, P.L.E., ACCESS RIGHTS	1.02 AC.	0.12 AC.	-	0.12 AC.	0.90 AC.	0.08 AC.	-
17	4.6	SCHUETTE REAL ESTATE FUND	FEE, T.I., ACCESS RIGHTS	8.73 AC.	0.03 AC.	-	0.03 AC.	8.70 AC.	-	0.03 AC.
18	4.7	GEORGE M. WADINSKI & PAULETTE F. WADZINSKI	FEE, P.L.E., ACCESS RIGHTS	22.50* AC.	0.76 AC.	-	0.76 AC.	21.74 AC.	0.40 AC.	-
60	4.4	WISCONSIN PUBLIC SERVICE CORP.	RELEASE OF RIGHTS							
11-1	4.6	MOUNTAIN VIEW GROUP	SIGN RIGHTS							
12-1	4.6	RIB MOUNTAIN	SIGN RIGHTS							
14-1	4.6	WESTGATE -SCHULTZ LLC.	SIGN RIGHTS							
E-1	4.6	HARBOR HOUSE	SIGN RIGHTS							

RECOVERED LOT/BLOCK CORNERS AND COORDINATE TABLE

STATION	OFFSET	PT*	Y	X	MONT. DESCRIPTION	STATION	OFFSET	PT*	Y	X	MONT. DESCRIPTION
90+91.83	193.44' LT	1798	185178.4640	275123.5930	1"IP HIT	121+50.51	388.09' LT	3345	187808.0940	273549.2650	1"IP
91+11.61	95.43' LT	1896	185240.9520	275201.6420	1"IP	122+03.00	25.80' LT	3444	188020.7270	273847.2570	1"IP
91+41.76	284.49' LT	1846	185181.1310	275019.7830	1"IP	122+88.69	26.08' LT	3530	188096.7650	273807.7500	1"IP
91+76.89	222.40' LT	1862	185240.8010	275058.8780	IP	122+96.38	40.93' LT	3529	188096.7980	273791.0300	1"IP
91+84.98	367.90' LT	1847	185181.3380	274925.8330	1"IP	127+24.33	279.92' LT	3906	188367.7020	273382.5300	3/4"REBAR
92+31.23	456.66' LT	1848	185181.7900	274825.7530	1"IP	127+24.50	26.51' LT	3823	188483.9490	273607.7040	1"REBAR
92+37.89	340.58' LT	1849	185240.8800	274925.8840	1 1/2"IP	127+29.84	340.92' LT	3908	188344.6620	273325.7850	3/4"REBAR
92+57.03	20.78' LT	2021	185404.4130	275201.3740	1"IP	127+90.37	206.51' LT	3915	188460.0440	273417.5290	3/4"REBAR
94+13.23	21.55' LT	2060	185542.9030	275129.1310	1"IP	127+90.54	26.54' LT	3943	188542.6380	273577.4260	3/4"REBAR
101+55.42	22.48' LT	2438	186202.1890	274788.2810	2"IP	130+21.48	32.44' LT	4167	188748.8390	273471.1210	3/4"REBAR
115+99.10	21.42' LT	3046	187485.9400	274127.8150	1"IP	130+71.45	46.13' RT	991	188827.5323	273520.8997	3/4"REBAR
116+71.14	161.35' LT	3072	187485.8670	273970.4340	1"IP W CAP	131+11.30	35.91' LT	4200	188828.6200	273429.6950	3/4"REBAR
118+76.93	488.19' LT	3088	187519.0540	273585.6350	1"IP	132+34.97	298.33' LT	4188	188828.6420	273139.5990	3/4"REBAR
118+90.79	514.80' LT	3089	187519.1800	273555.6340	1"IP	145+18.25	10.61' RT	4760	190119.1280	272864.9120	1"IP
119+57.99	24.44' LT	3307	187803.5630	273960.7120	1"IP	145+73.79	34.00' RT	4835	190179.2730	272850.0810	3/4"REBAR
121+36.31	361.81' LT	3346	187807.5130	273579.1390	1"IP HIT	146+37.58	57.67' RT	4836	190246.1420	272823.1540	1"IP

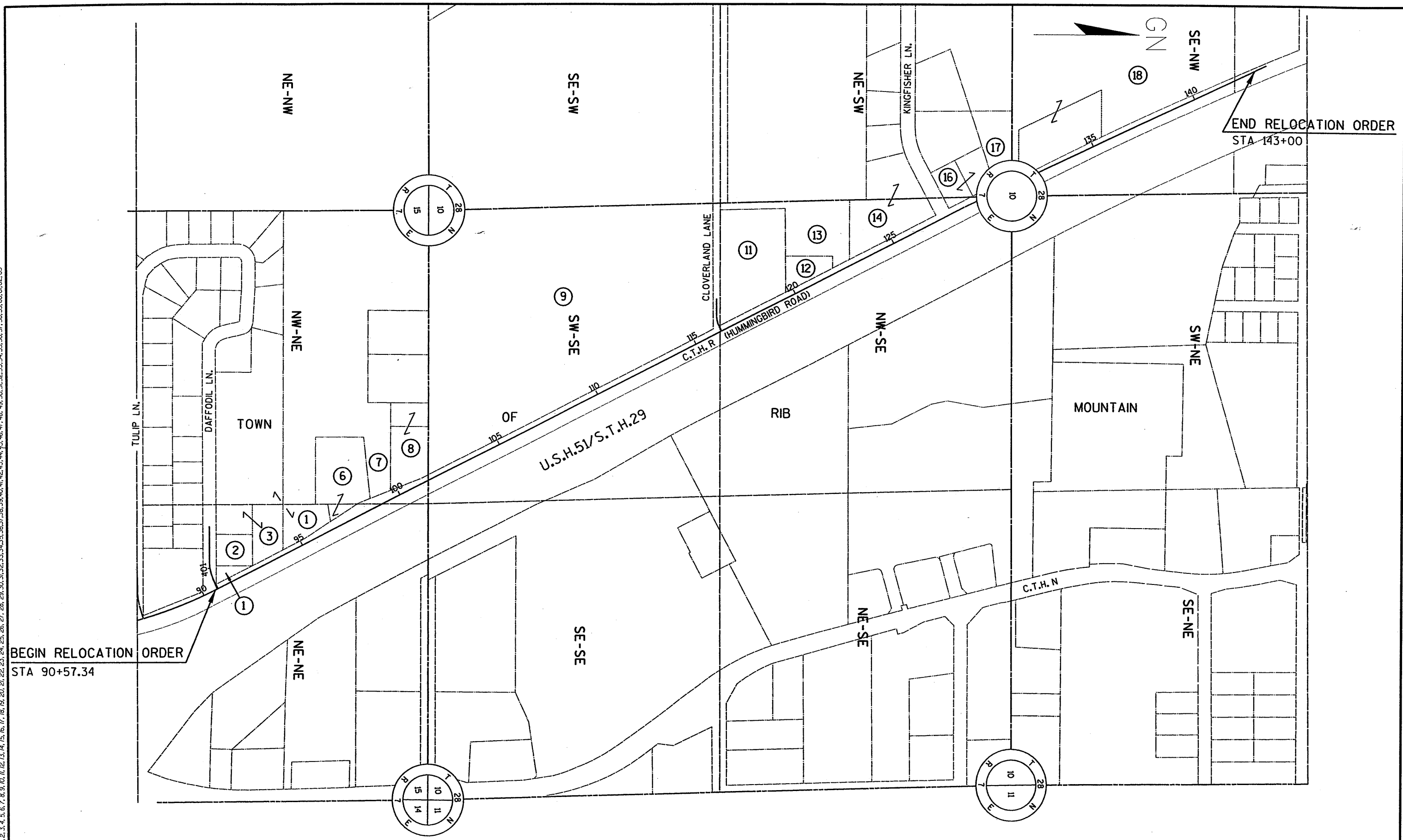
PROPOSED R/W POINT NUMBER AND COORDINATE TABLE

STATION	OFFSET	PT*	Y	X	STATION	OFFSET	PT*	Y	X
90+57.34	122.83' LT	967	185180.8730	275201.7405	124+15.00	60.00' LT	401	188193.5025	273719.7308
90+57.34	59.23' RT	985	185263.1879	275364.1302	126+50.00	60.00' LT	469	188402.3896	273612.0684
91+11.54	95.47' LT	961	185240.8732	275201.6421	128+56.74	65.00' LT	467	188584.8899	273512.3809
91+40.98	80.36' LT	438	185273.9563	275201.5879	128+56.74	50.00' LT	468	188591.5248	273525.8364
91+40.98	152.34' LT	439	185240.9812	275137.6094	130+70.19	45.58' RT	464	188826.1602	273520.9353
91+70.90	65.00' LT	963	185307.5891	275201.5327	130+71.45	46.13' RT	991	188827.5323	273520.8997
101+13.40	57.59' RT	473	186202.3210	274740.3795	130+91.11	54.81' RT	494	188849.0223	273520.3672
101+77.48	65.00' LT	472	186201.5239	274878.7107	131+00.38	54.46' RT	400	188857.2573	273516.1071
110+00.00	56.26' RT	475	186998.9977	274471.3352	131+16.87	50.00' LT	476	188827.6465	273414.5820
110+00.00	65.00' LT	474	186933.4449	274363.5513	131+23.95	65.00' LT	466	188827.6643	273397.9919
115+50.00	65.00' LT	459	187422.3296	274111.5755	136+85.00	65.00' LT	337	189335.1961	273158.8560
116+41.79	157.82' LT	458	187461.3918	273987.0138	136+85.00	100.00' LT	338	189320.2780	273127.1945
117+06.70	124.43' LT	457	187534.3918	273986.9617	137+00.00	43.11' RT	462	189394.8448	273250.2589
118+00.00	60.00' LT	456	187646.8406	274001.4855	137+15.00	100.00' LT	339	189347.4164	273114.4076
120+00.00	54.75' RT	465	187877.1881	274011.8571	137+15.00	65.00' LT	440	189362.3345	273146.0691
123+85.00	100.00' LT	436	188148.5105	273697.9197	141+75.31	49.57' RT	449	189827.5700	273053.5200
123+85.00	60.00' LT	434	188166.8361	273733.4749	142+21.87	50.00' LT	479	189827.2486	272943.5952
124+15.00	100.00' LT	437	188175.1770	273684.1755	142+28.88	65.00' LT	461	189827.2002	272927.0363

REVISION DATE 12-12-2002	DATE 7-08-2002	SCALE, FEET NOT TO SCALE	HWY: WEST ARTERIAL	CONSTRUCTION PROJECT NUMBER	PS&E SHEET NO:
			COUNTY: MARATHON	STATE R/W PROJECT NUMBER 6675-00-01	PLAT SHEET NO: 4.2

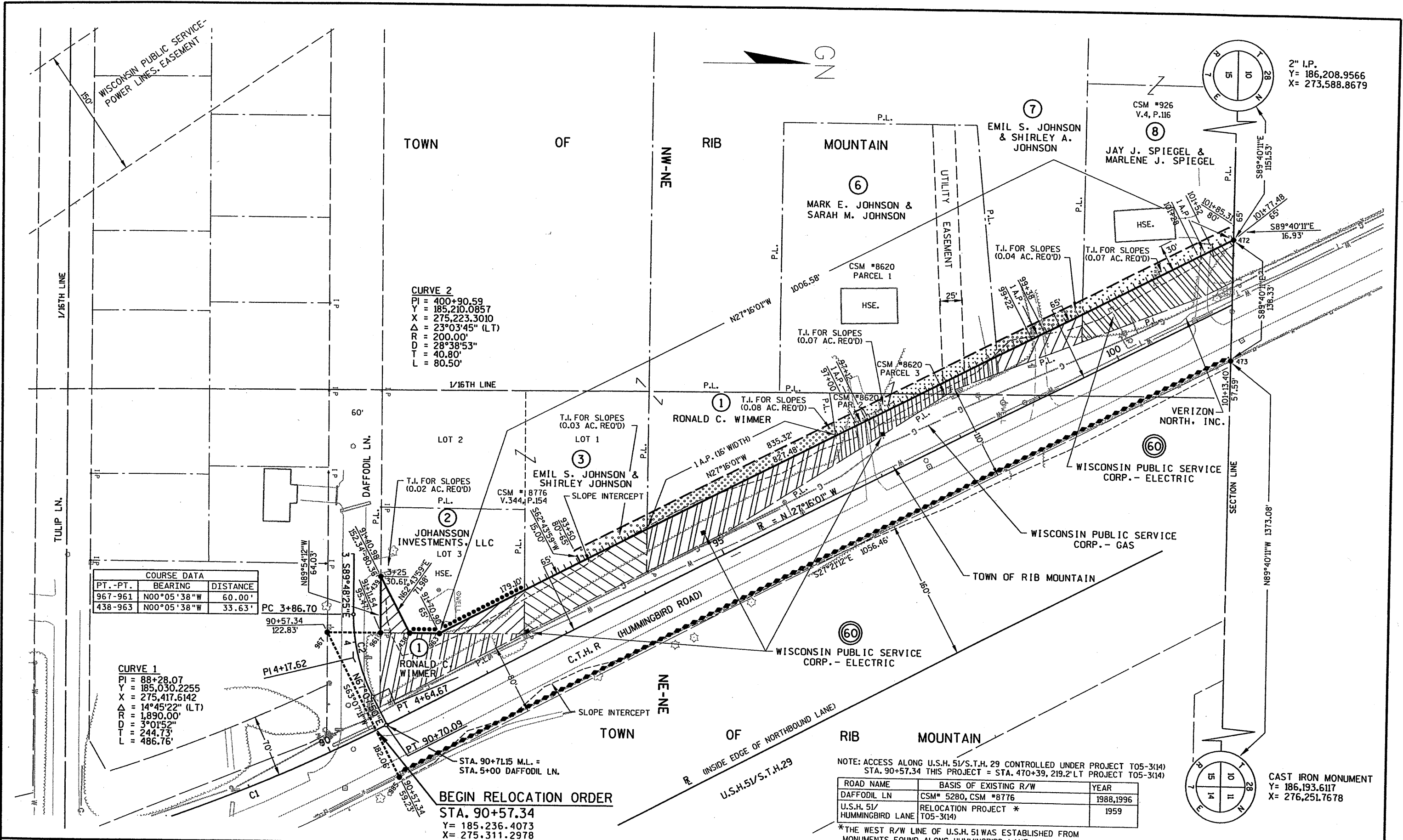
LEVELS ON - 1, 2, 3, 4, 5, 6, 7, 8, 9, 10, 11, 12, 13, 14, 15, 16, 17, 18, 19, 20, 21, 22, 23, 24, 25, 26, 27, 28, 29, 30, 31, 32, 33, 34, 35, 36, 37, 38, 39, 40, 41, 42, 43, 44, 45, 46, 47, 48, 49, 50, 51, 52, 53, 54, 55, 56, 57, 58, 59, 60, 61, 62, 63

LEVELS ON - 1, 2, 3, 4, 5, 6, 7, 8, 9, 10, 11, 12, 13, 14, 15, 16, 17, 18, 19, 20, 21, 22, 23, 24, 25, 26, 27, 28, 29, 30, 31, 32, 33, 34, 35, 36, 37, 38, 39, 40, 41, 42, 43, 44, 45, 46, 47, 48, 49, 50, 51, 52, 53, 54, 55, 56, 57, 58, 59, 60, 61, 62, 63



REVISION DATE 12-12-2002	DATE 7-8-2002	NOT TO SCALE	HWY: WEST ARTERIAL	CONSTRUCTION PROJECT NUMBER	PS&E SHEET NO: 4.
			COUNTY: MARATHON	STATE R/W PROJECT NUMBER 6675-00-01	PLAT SHEET NO: 4.3

LEVELS ON - 1, 2, 3, 4, 5, 6, 7, 8, 9, 10, 11, 12, 13, 14, 15, 16, 17, 18, 19, 20, 21, 22, 23, 24, 25, 26, 27, 28, 29, 30, 31, 32, 33, 34, 35, 36, 37, 38, 39, 40, 41, 42, 43, 44, 45, 46, 47, 48, 49, 50, 51, 52, 53, 54, 55, 56, 57, 58, 59, 60, 61, 62, 63



PT.-PT.	BEARING	DISTANCE
967-961	N00°05'38"W	60.00'
438-963	N00°05'38"W	33.63'

CURVE 1
 PI = 88+28.07
 Y = 185,030.2255
 X = 275,417.6142
 Δ = 14°45'22" (LT)
 R = 1,890.00'
 D = 3°01'52"
 T = 244.73'
 L = 486.76'

CURVE 2
 PI = 400+90.59
 Y = 185,210.0857
 X = 275,223.3010
 Δ = 23°03'45" (LT)
 R = 200.00'
 D = 28°38'53"
 T = 40.80'
 L = 80.50'

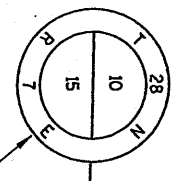
NOTE: ACCESS ALONG U.S.H. 51/S.T.H. 29 CONTROLLED UNDER PROJECT T05-3(14)
 STA. 90+57.34 THIS PROJECT = STA. 470+39, 219.2' LT PROJECT T05-3(14)

ROAD NAME	BASIS OF EXISTING R/W	YEAR
DAFFODIL LN	CSM # 5280, CSM # 8776	1988, 1996
U.S.H. 51/ HUMMINGBIRD LANE	RELOCATION PROJECT * T05-3(14)	1959

*THE WEST R/W LINE OF U.S.H. 51 WAS ESTABLISHED FROM MONUMENTS FOUND ALONG HUMMINGBIRD LANE.

CAST IRON MONUMENT
 Y = 186,193.6117
 X = 276,251.7678

REVISION DATE 12-12-2002	DATE 7-8-2002	SCALE, FEET 0 50 100	HWY: WEST ARTERIAL	CONSTRUCTION PROJECT NUMBER	PS&E SHEET NO: 4.
GRID FACTOR N/A			COUNTY: MARATHON	STATE R/W PROJECT NUMBER 6675-00-01	PLAT SHEET NO: 4.4
FILE NAME : E:\trans\marac\0105.00-county\cod\rdhmg01.dgn	PLOT DATE: 12/10/02	PLOT TIME: 02:04:54 PM	ORG DATE :	PLOT NAME :	Originator : Dist
				PLOT SCALE : N/A	WISDOT/CADD SHEET 75



2" I.P.
Y = 186,208.9566
X = 273,588.8679

CURVE 3
PI = 5+52.82
Y = 187,501.4653
X = 274,089.8053
Δ = 27°15'20" (LT)
R = 99.69'
D = 57°28'18"
T = 24.17'
L = 47.42'

9
RONALD C. WIMMER &
JOAN E. WIMMER

TOWN OF RIB MOUNTAIN

CSM #10649

SW-SE

SLOPE INTERCEPT

STA. 116+30.34 M.L. =
STA. 5+00 CLOVERLAND LN.

VERIZON NORTH, INC.

WISCONSIN PUBLIC SERVICE
CORP. - GAS

T.I. FOR SLOPES
(0.28 AC. REQ'D)

TOWN OF RIB MOUNTAIN

C.T.H. R
(HUMMINGBIRD ROAD)

INSIDE EDGE OF NORTHBOUND LANE

WISCONSIN PUBLIC SERVICE
CORP. - ELECTRIC

U.S.H. 51/S.T.H. 29

TOWN OF RIB MOUNTAIN

CAST IRON MONUMENT
Y = 186,193.6117
X = 276,251.7678

NOTE: ACCESS ALONG U.S.H. 51/S.T.H. 29 CONTROLLED UNDER PROJECT T05-3(14)

ROAD NAME	BASIS OF EXISTING R/W	YEAR
CLOVERLAND LN	CSM# 10649, CSM #3-38, CSM# 4166	1999, 1973, 1986
U.S.H. 51/ HUMMINGBIRD LANE	RELOCATION PROJECT * T05-3(14)	1959

*THE WEST R/W LINE OF U.S.H. 51 WAS ESTABLISHED FROM MONUMENTS FOUND ALONG HUMMINGBIRD LANE.

REVISION DATE
12-12-2002

DATE 7-8-2002

SCALE, FEET
0 50 100

HWY: WEST ARTERIAL

CONSTRUCTION PROJECT NUMBER

PS&E SHEET NO: 4.

GRID FACTOR N/A

COUNTY: MARATHON

STATE R/W PROJECT NUMBER 6675-00-01

PLAT SHEET NO: 4.5

E

LEVELS ON - 1, 2, 3, 4, 5, 6, 7, 8, 9, 10, 11, 12, 13, 14, 15, 16, 17, 18, 19, 20, 21, 22, 23, 24, 25, 26, 27, 28, 29, 30, 31, 32, 33, 34, 35, 36, 37, 38, 39, 40, 41, 42, 43, 44, 45, 46, 47, 48, 49, 50, 51, 52, 53, 54, 55, 56, 57, 58, 59, 60, 61, 62, 63

SIGN SCHEDULE			
SIGN NUMBER	OWNER	STATION	DIST.
11-1	MT. VIEW GROUP	118+21	34' LT.
12-1	JEHOVAH'S WITNESSES	121+99	47' LT.
14-1	WESTGATE-SHULTZ LLC	126+91	29' LT.
E-1	HARBOR HOUSE	129+45	22' LT.

2" I.P.
Y = 186,208.9566
X = 273,588.8679

TOWN OF RIB MOUNTAIN

CURVE 3
PI = 4+52.82
Y = 187,501.4653
X = 274,089.8053
Δ = 27°15'20" (L.T.)
R = 99.69'
D = 57°28'18"
T = 24.17'
L = 47.42'

11
AALL

P.L.

P.L.

P.L.

P.L.

P.L.

P.L.

P.L.

P.L.

P.L.

P.L.

P.L.

P.L.

P.L.

P.L.

P.L.

P.L.

P.L.

P.L.

P.L.

P.L.

P.L.

P.L.

P.L.

P.L.

P.L.

P.L.

P.L.

P.L.

P.L.

P.L.

P.L.

P.L.

P.L.

P.L.

P.L.

P.L.

P.L.

P.L.

P.L.

P.L.

P.L.

P.L.

P.L.

P.L.

P.L.

P.L.

P.L.

P.L.

P.L.

P.L.

P.L.

P.L.

P.L.

P.L.

P.L.

P.L.

P.L.

P.L.

P.L.

P.L.

P.L.

P.L.

P.L.

P.L.

P.L.

P.L.

P.L.

P.L.

P.L.

P.L.

P.L.

P.L.

P.L.

P.L.

P.L.

P.L.

P.L.

P.L.

P.L.

P.L.

P.L.

P.L.

P.L.

P.L.

P.L.

P.L.

P.L.

P.L.

P.L.

P.L.

P.L.

P.L.

P.L.

P.L.

P.L.

P.L.

P.L.

P.L.

P.L.

P.L.

P.L.

P.L.

P.L.

P.L.

P.L.

P.L.

P.L.

P.L.

P.L.

P.L.

P.L.

P.L.

P.L.

P.L.

P.L.

P.L.

P.L.

P.L.

P.L.

P.L.

P.L.

P.L.

P.L.

P.L.

P.L.

P.L.

P.L.

P.L.

P.L.

P.L.

P.L.

P.L.

P.L.

P.L.

P.L.

P.L.

P.L.

P.L.

P.L.

P.L.

P.L.

P.L.

P.L.

P.L.

P.L.

P.L.

P.L.

P.L.

P.L.

P.L.

P.L.

P.L.

P.L.

P.L.

P.L.

P.L.

P.L.

P.L.

P.L.

P.L.

P.L.

P.L.

P.L.

P.L.

P.L.

P.L.

P.L.

P.L.

P.L.

P.L.

P.L.

P.L.

P.L.

P.L.

P.L.

P.L.

P.L.

P.L.

P.L.

P.L.

P.L.

P.L.

P.L.

P.L.

P.L.

P.L.

P.L.

P.L.

P.L.

P.L.

P.L.

P.L.

P.L.

P.L.

P.L.

P.L.

P.L.

P.L.

P.L.

P.L.

P.L.

P.L.

P.L.

P.L.

P.L.

P.L.

P.L.

P.L.

P.L.

P.L.

P.L.

P.L.

P.L.

P.L.

P.L.

P.L.

P.L.

P.L.

P.L.

P.L.

P.L.

P.L.

P.L.

P.L.

P.L.

P.L.

P.L.

P.L.

P.L.

P.L.

P.L.

P.L.

P.L.

P.L.

P.L.

P.L.

P.L.

P.L.

P.L.

P.L.

P.L.

P.L.

P.L.

P.L.

P.L.

P.L.

P.L.

P.L.

P.L.

P.L.

P.L.

P.L.

P.L.

P.L.

P.L.

P.L.

P.L.

P.L.

P.L.

P.L.

P.L.

P.L.

P.L.

P.L.

P.L.

P.L.

P.L.

P.L.

P.L.

P.L.

P.L.

P.L.

P.L.

P.L.

P.L.

P.L.

P.L.

P.L.

P.L.

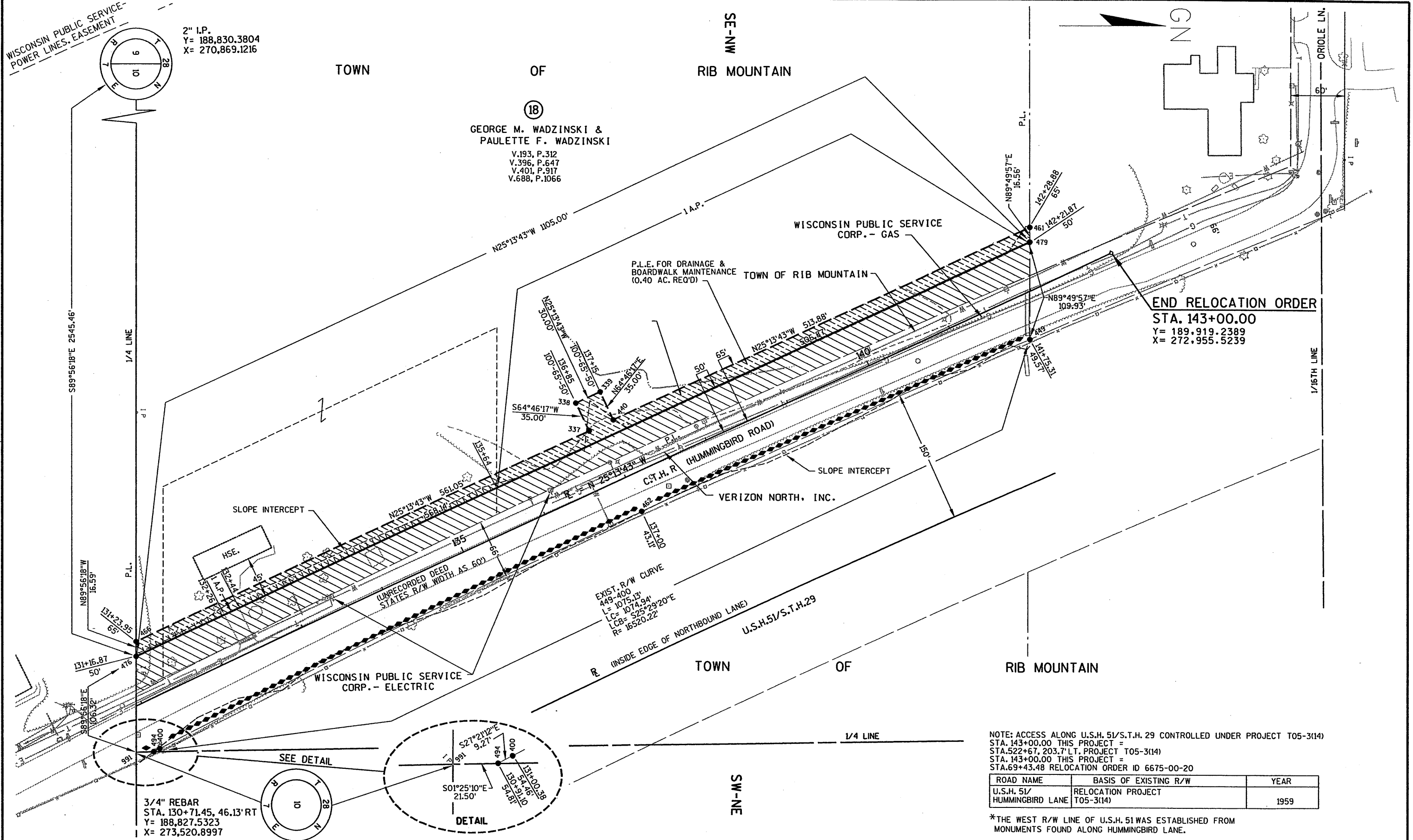
P.L.

P.L.

P.L.

P.L.

P.L.

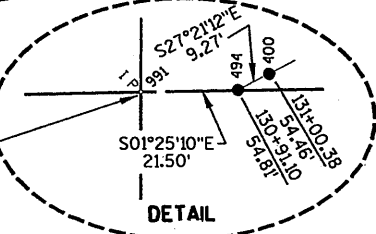


2" I.P.
Y= 188,830.3804
X= 270,869.1216

TOWN OF RIB MOUNTAIN
 (18)
 GEORGE M. WADZINSKI &
 PAULETTE F. WADZINSKI
 V.193, P.312
 V.396, P.647
 V.401, P.917
 V.688, P.1066

END RELOCATION ORDER
 STA. 143+00.00
 Y= 189,919.2389
 X= 272,955.5239

3/4" REBAR
 STA. 130+71.45, 46.13' RT
 Y= 188,827.5323
 X= 273,520.8997



NOTE: ACCESS ALONG U.S.H. 51/S.T.H. 29 CONTROLLED UNDER PROJECT T05-3(14)
 STA. 143+00.00 THIS PROJECT =
 STA. 522+67, 203.7' LT, PROJECT T05-3(14)
 STA. 143+00.00 THIS PROJECT =
 STA. 69+43.48 RELOCATION ORDER ID 6675-00-20

ROAD NAME	BASIS OF EXISTING R/W	YEAR
U.S.H. 51/ HUMMINGBIRD LANE	RELOCATION PROJECT T05-3(14)	1959

*THE WEST R/W LINE OF U.S.H. 51 WAS ESTABLISHED FROM MONUMENTS FOUND ALONG HUMMINGBIRD LANE.

REVISION DATE 12-12-2002	DATE 7-8-2002	SCALE, FEET 0 50 100	HWY: WEST ARTERIAL	CONSTRUCTION PROJECT NUMBER	PS&E SHEET NO: 4.
GRID FACTOR N/A			COUNTY: MARATHON	STATE R/W PROJECT NUMBER 6675-00-01	PLAT SHEET NO: 4.7