

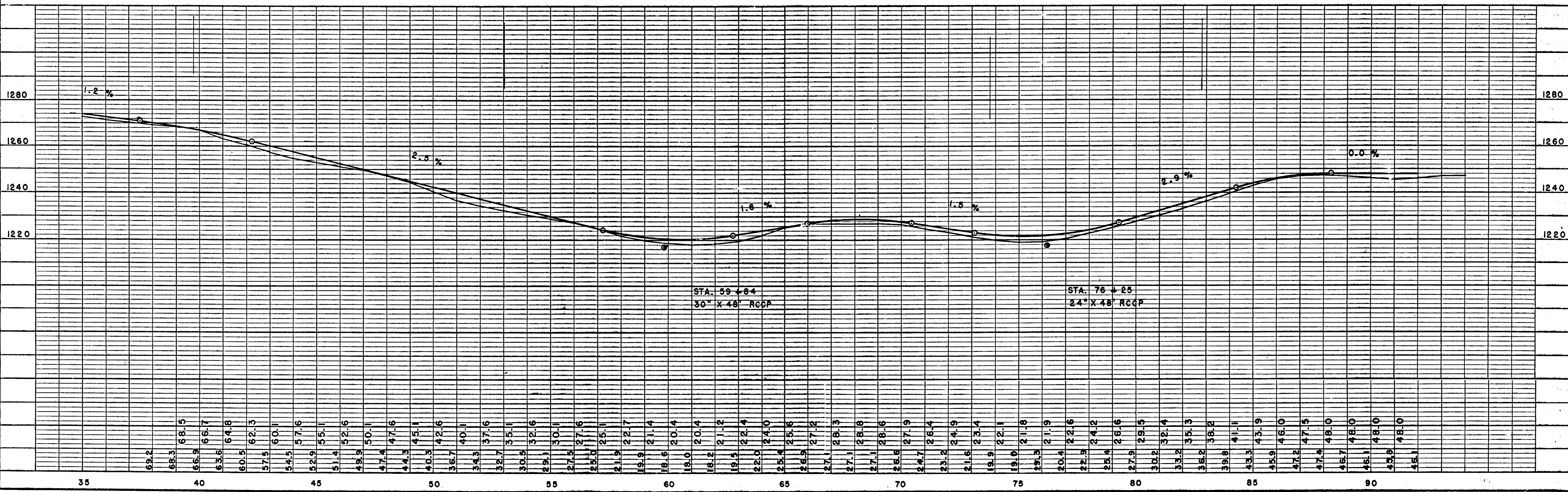
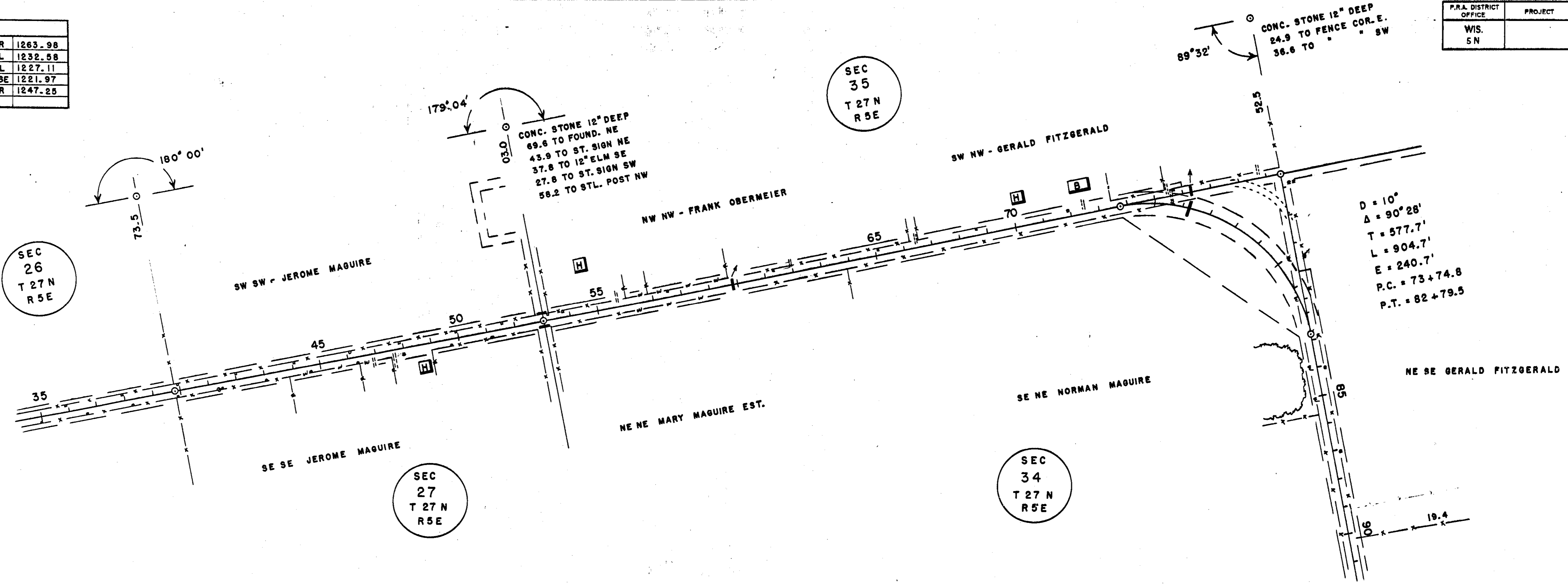
"S" EMMET 1953

BENCH MARKS				
6	41+28	SPIKE IN 12" ELM	24'R	1263.98
7	56+25	" " 24" ELM	60'L	1232.58
8	65+28	" " 18" MAPLE	60'L	1227.11
9	P.I.	POW. POLE	28'SE	1221.97
10	85+66	" " 12" ELM	50'R	1247.25

P.R.A. DISTRICT OFFICE	PROJECT	SHEET NUMBER	TOTAL SHEETS
WIS. 5N			

DATE: 4-53
 BY: C.E.C.
 PLM
 SURVEYED, PLOTTED, ALIGNED, CHECKED, RT. OF WAY CHECKED, NO.

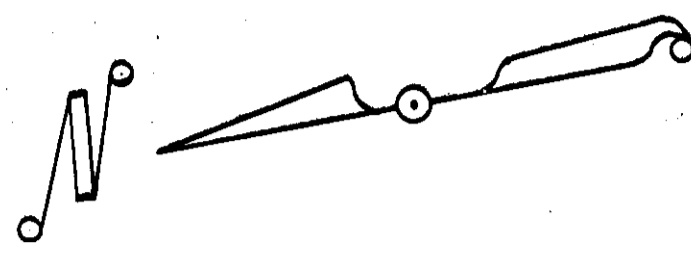
DATE: 4-53
 BY: C.E.C.
 PROFILE
 SURVEYED, PLOTTED, GRADES CHECKED, STRUCTURE NOTATIONS CHKD., NO.



"S" EMMET & GREEN VALLEY 1953

P.R.A. DISTRICT OFFICE	PROJECT	SHEET NUMBER	TOTAL SHEETS
WIS. 5N			

BENCH MARKS				
10	85+56	SPIKE IN 12" ELM	50' R	1247.25
	100+00	USGS	22' R	
11	102+30	SPIKE IN 24" MAPLE	26' R	1238.75
12	133+92	12" SPRUCE	95' R	1247.14
13	152+22	18" ELM	50' R	1242.46



180° 45'
 CONC. STONE 4" DEEP
 2' N. OF CL. S.R. W
 54.2 TO ST. SIGN SW
 29.6 TO POW. POLE NW

SEC 3
T 26 N
R 5 E

SEC 34
T 27 N
R 5 E

SEC 34
T 27 N
R 5 E

SEC 3
T 26 N
R 5 E

PLAN	DATE
BY C. E. C.	5-53

D = 10°
 Δ = 90° 46'
 T = 580.7
 L = 907.7
 E = 242.8
 PC = 97+65.6
 PT = 106+73.3

P.I. - IRON PIN
 25.0 TO STL. POST NW
 31.6 TO POW. POLE SW
 25.6 TO ST. SIGN SE

SW NE MARGARET MAGUIRE

NW SE - KENNETH NEST - SW SE

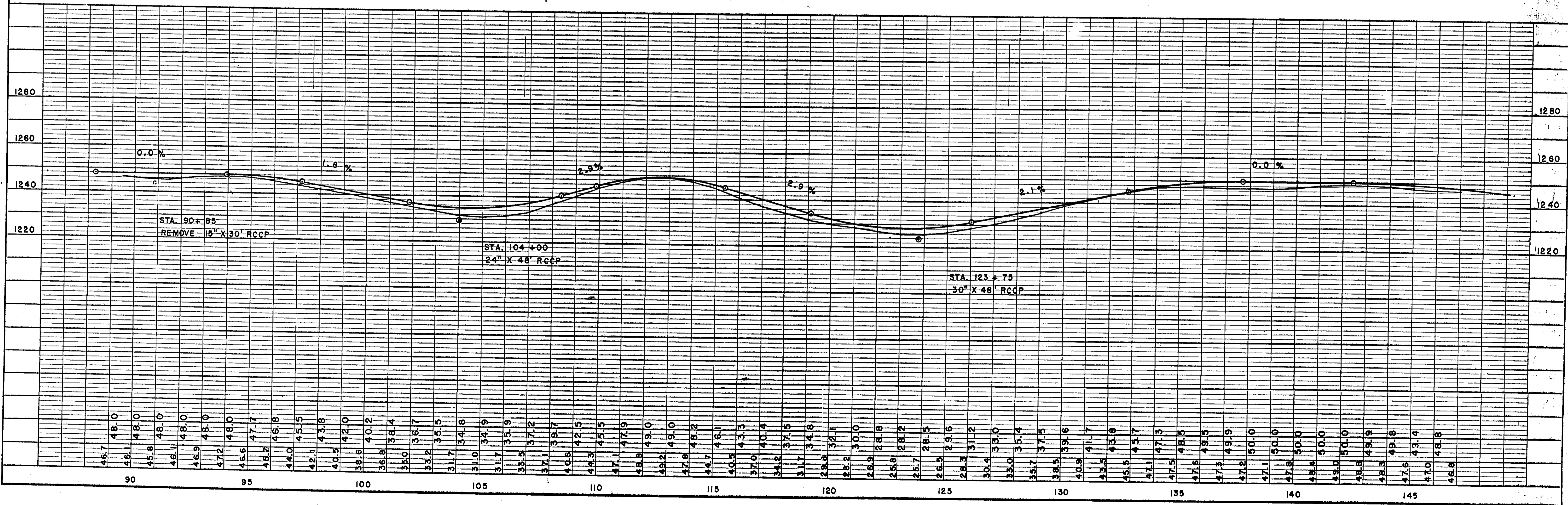
NW NE - ANDREW GEBELEIN - SW NE

NE NW - JOHN HAPPLI - SE NW

SE SW - JOHN DEILER

NE SW - J. B. Z. KUSIAK

EMMET
GREEN VALLEY

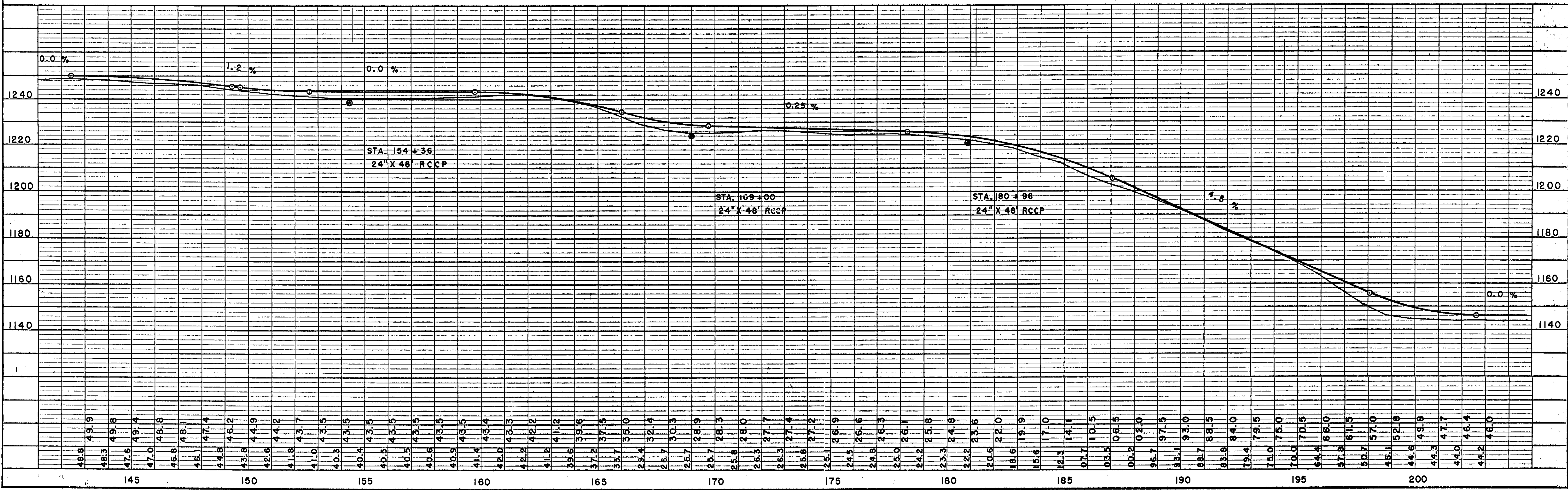
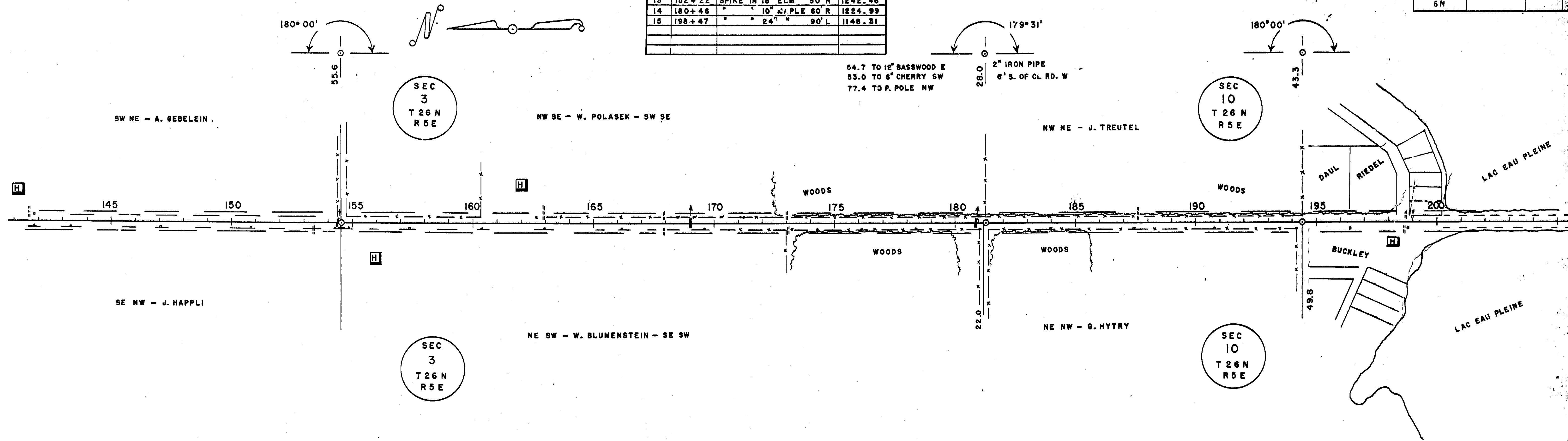


PROFILE	DATE
BY C. E. C.	4-53

"S" - GREEN VALLEY - 1953

BENCH MARKS				
13	152+22	SPIKE IN 18" ELM	50' R	1242.46
14	180+46	10" MAPLE	60' R	1224.99
15	198+47	24" "	90' L	1148.31

P.R.A. DISTRICT OFFICE	PROJECT	SHEET NUMBER	TOTAL SHEETS
WIS. 5N			



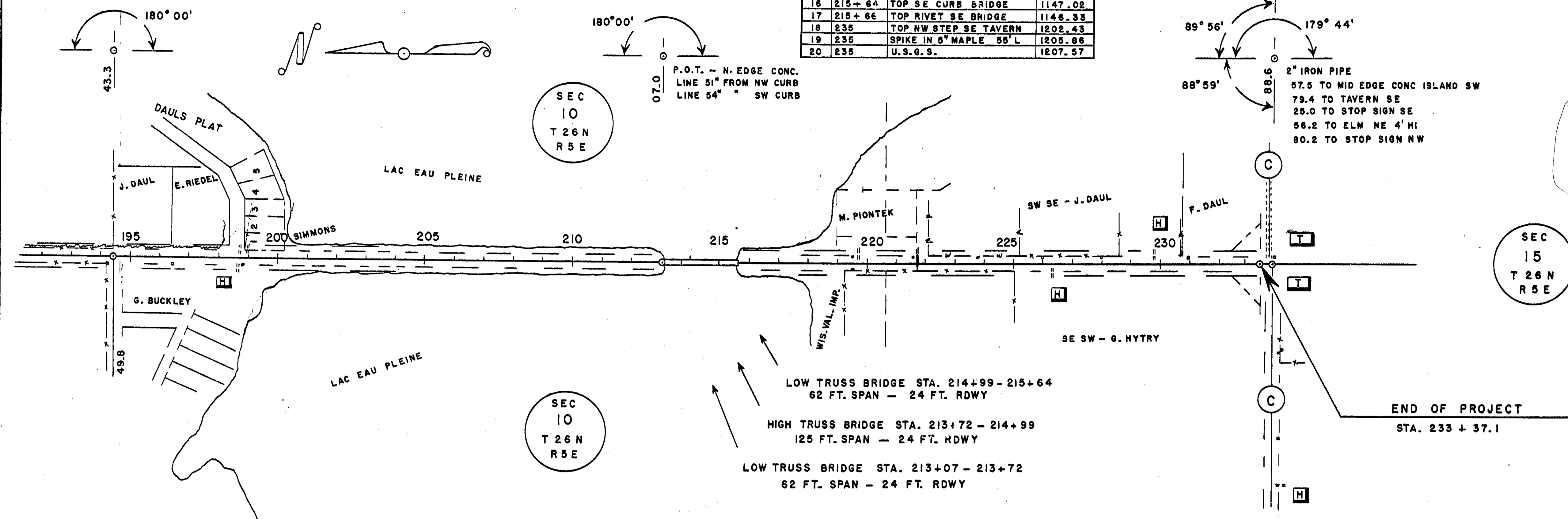
PLAN	DATE
BY C.E.C.	5-53
NO.	

PROFILE	DATE
BY C.E.C.	4-53
NO.	

"S" - GREEN VALLEY - 1953

P.R.A. DISTRICT OFFICE	PROJECT	SHEET NUMBER	TOTAL SHEETS
WIS. 5N			

BENCH MARKS			
15	198+47	SPIKE IN 2" MAPLE 90'L	1148.31
16	215+64	TOP SE CURB BRIDGE	1147.02
17	215+66	TOP RIVET SE BRIDGE	1146.33
18	235	TOP NW STEP SE TAVERN	1202.43
19	235	SPIKE IN 5" MAPLE 55'L	1205.86
20	235	U.S.G.S.	1207.57

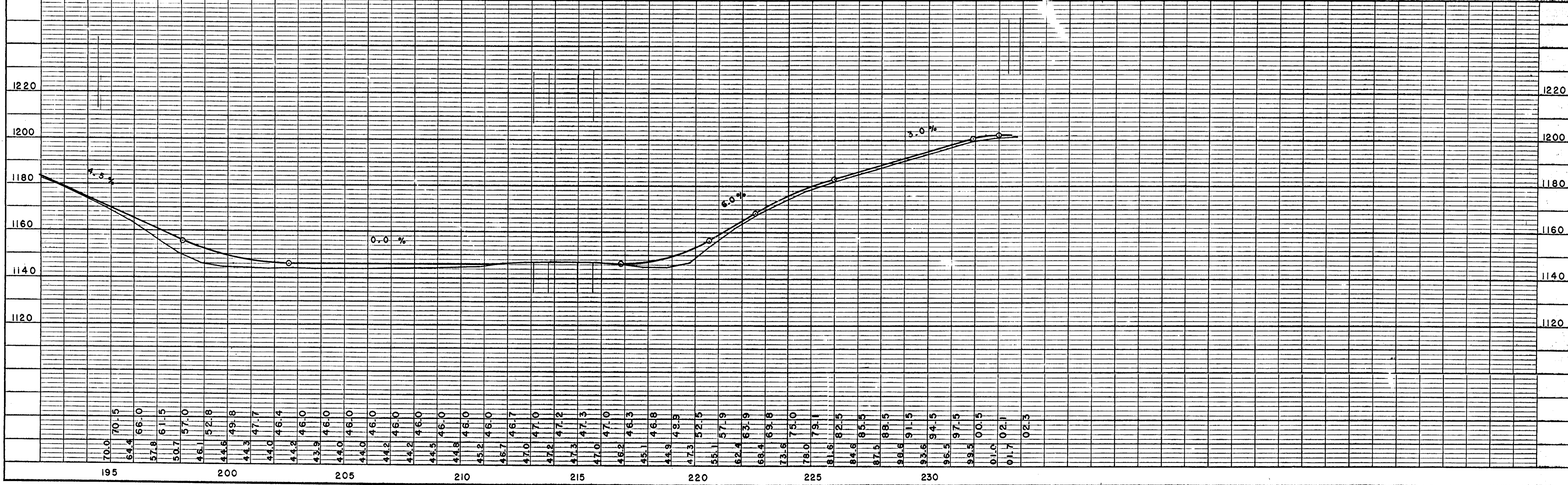


Field - Hwy E road W. 50 ft at cor. back to sec. line 1/4 mile back way all within 80 as shown

New Ties - ?

- 57.4 to Pow. Pole - NW
- 65.3 to Cor. Conc. slab - SW
- 57.4 to Mid Pump Int. - SW

TOTAL LENGTH OF PROJECT STA. 0+11.0 - 233+37.1 = 23,326.1 FT. = 4.418 MILES



PLAN	DATE
BY C.E.C.	4-53
NOTES	

PROFILE	DATE
BY C.E.C.	4-53
NOTES	