

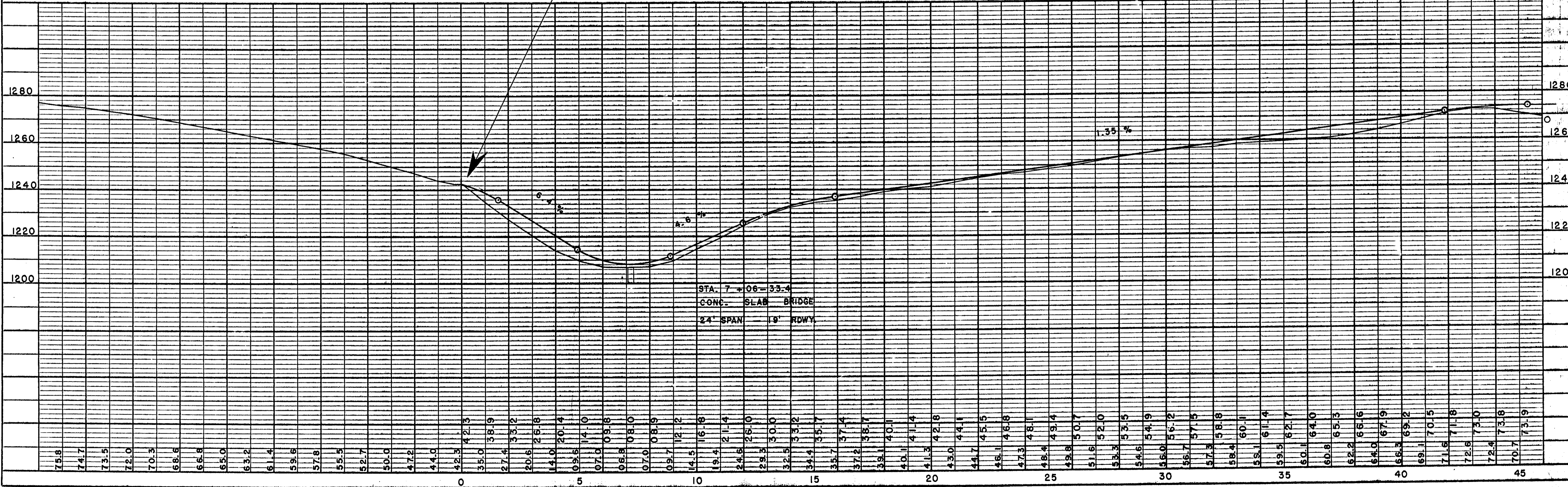
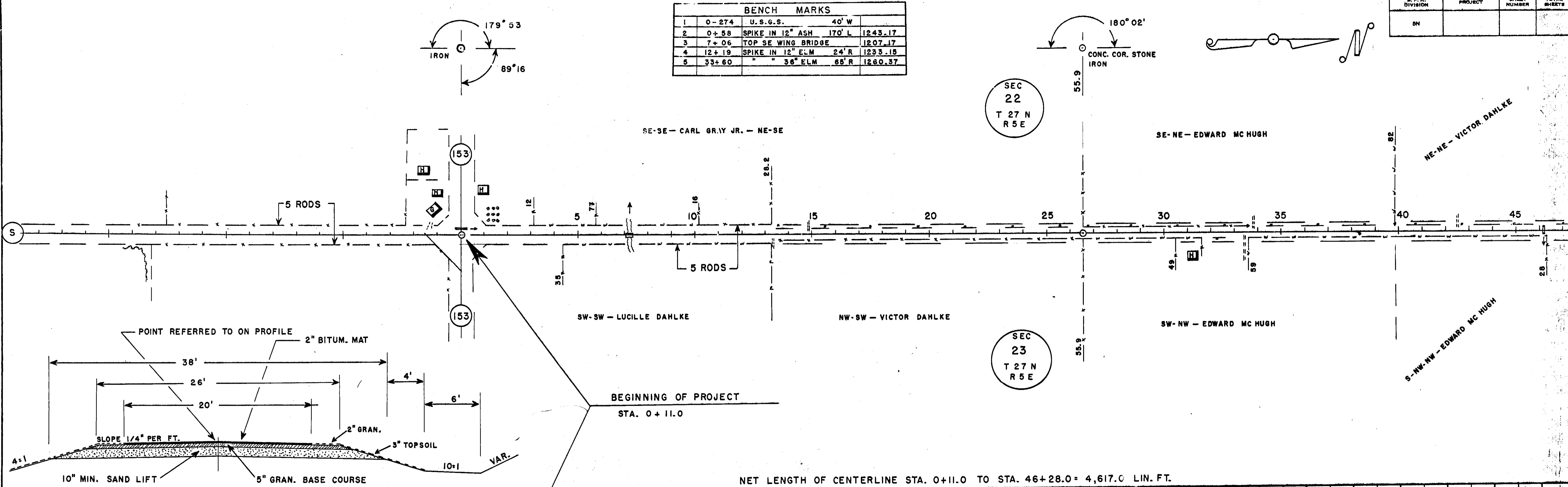
C.T.H. "S" - TOWN OF EMMET

BENCH MARKS				
1	0-274	U.S.G.S.	40' W	
2	0+58	SPIKE IN 12" ASH	170' L	1243.17
3	7+06	TOP SE WING BRIDGE		1207.17
4	12+19	SPIKE IN 12" ELM	24' R	1233.15
5	33+60	" " 36" ELM	65' R	1260.37

R.P.R. DIVISION	PROJECT	SHEET NUMBER	TOTAL SHEETS
SN			

DATE: 5-54
 BY: C.E.C.
 SURVEYED: C.E.C.
 PLAN: SURVEYED, PLOTTED, CHECKED, AND REVISIONS MADE BY C.E.C.
 NOTE BOOK NO. OF WAY CHECKED.

DATE: 4-54
 BY: C.E.C.
 PROFILE: SURVEYED, PLOTTED, CHECKED, AND REVISIONS MADE BY C.E.C.
 NOTE BOOK NO. STRUCTURE NOTATIONS CHD.



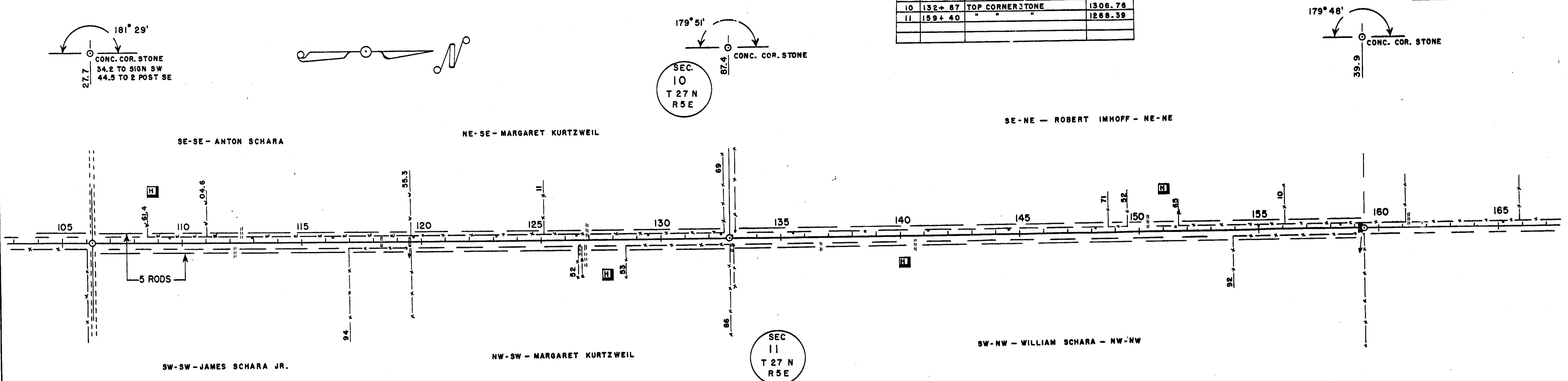
C.T.H. "S" - EMMET

BENCH MARKS			
8	108+58	U.S.G.S.	27' L 1305.84
9	126+52	SPIKE IN 18" ASH	40' L 1288.21
10	132+87	TOP CORNER STONE	1306.76
11	159+40	"	1288.39

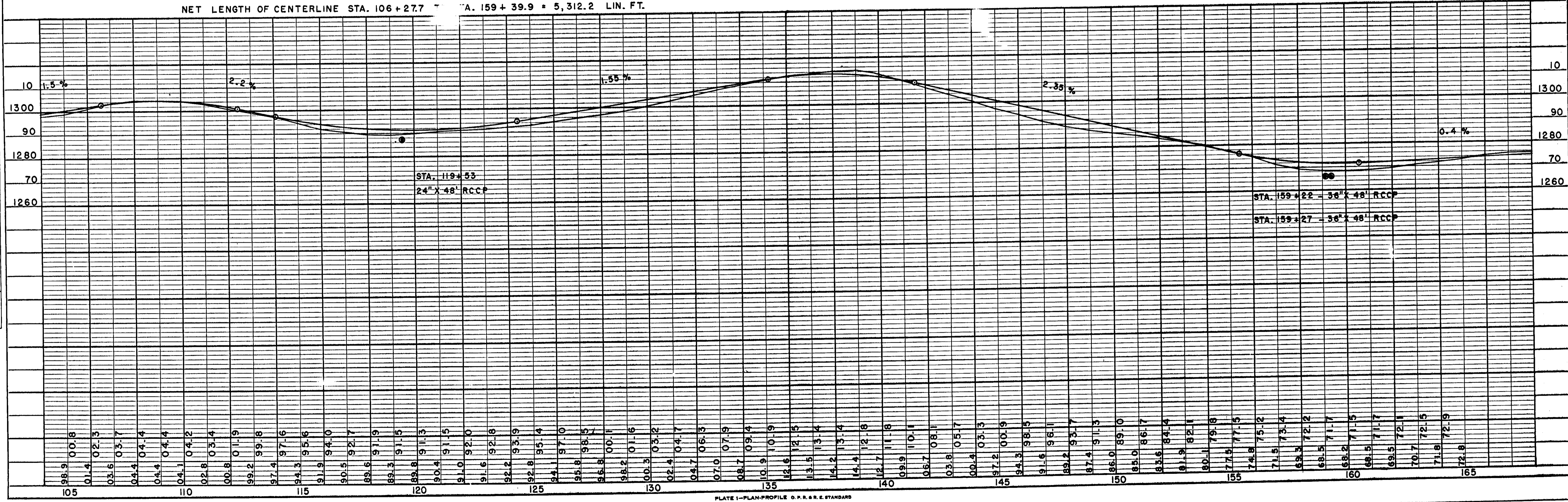
B.P.R. DIVISION	PROJECT	SHEET NUMBER	TOTAL SHEETS
4			

PLAN	DATE
BY: C.E.C.	4-55
SURVEYED	
ALIGNED	
GRADES CHECKED	
RT. OF WAY CHECKED	
NOTE BOOK NO.	

PROFILE	DATE
BY: C.E.C.	4-55
GRADES CHECKED	
B.M.'S. NOTED	
STRUCTURE NOTATIONS CHKD.	
NOTE BOOK NO.	



NET LENGTH OF CENTERLINE STA. 106+27.7 TO STA. 159+39.9 = 5,312.2 LIN. FT.



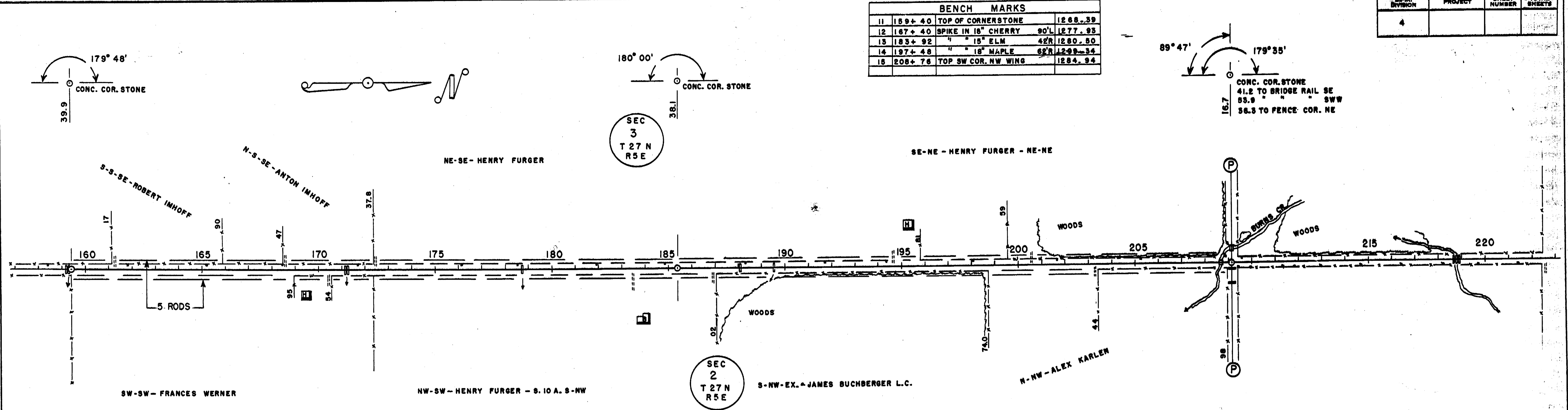
C.T.H. "S" - EMMET

BENCH MARKS			
11	189+40	TOP OF CORNERSTONE	1288.39
12	167+40	SPIKE IN 18" CHERRY 90°L	1277.93
13	183+92	" " 18" ELM 42R	1280.80
14	197+48	" " 18" MAPLE 62R	1289.34
15	208+76	TOP SW COR. NW WING	1284.94

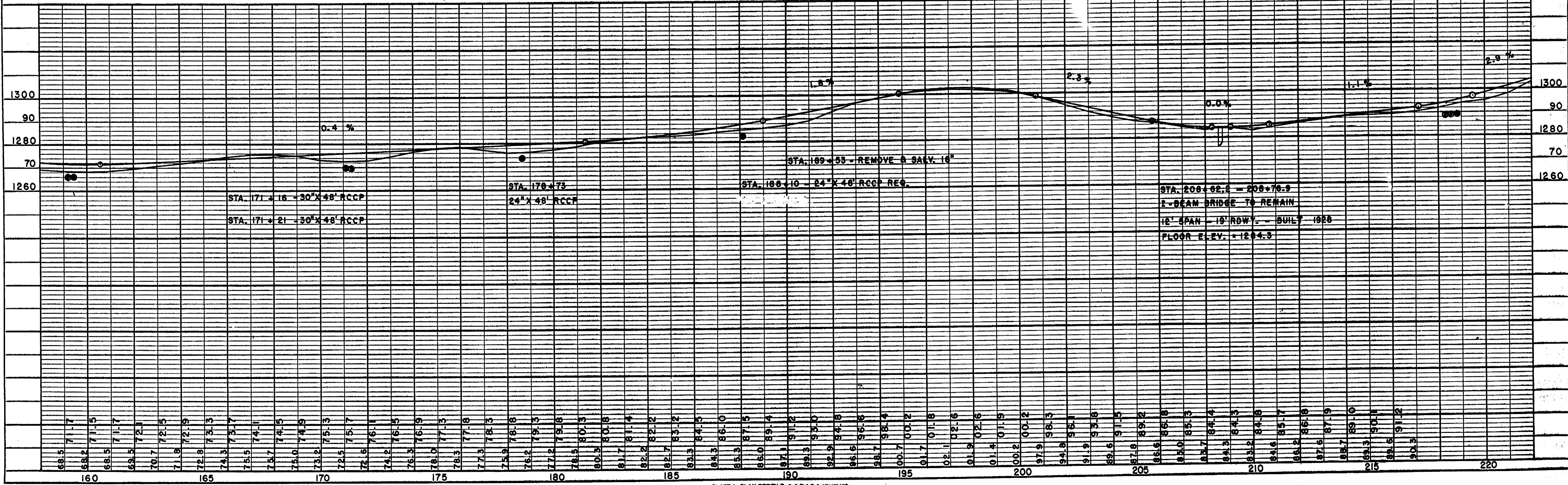
S.P.R. DIVISION	PROJECT	SHEET NUMBER	TOTAL SHEETS
4			

DATE 4-55
BY C.E.C.
SURVEYED
PLOTTED
NOTE BOOK NO. 101
CHECKED
REL. OF WAY CHECKED

DATE 4-55
BY C.E.C.
SURVEYED
PLOTTED
NOTE BOOK NO. 101
CHECKED
GRADES CHECKED
STRUCTURE NOTATION CHFD.



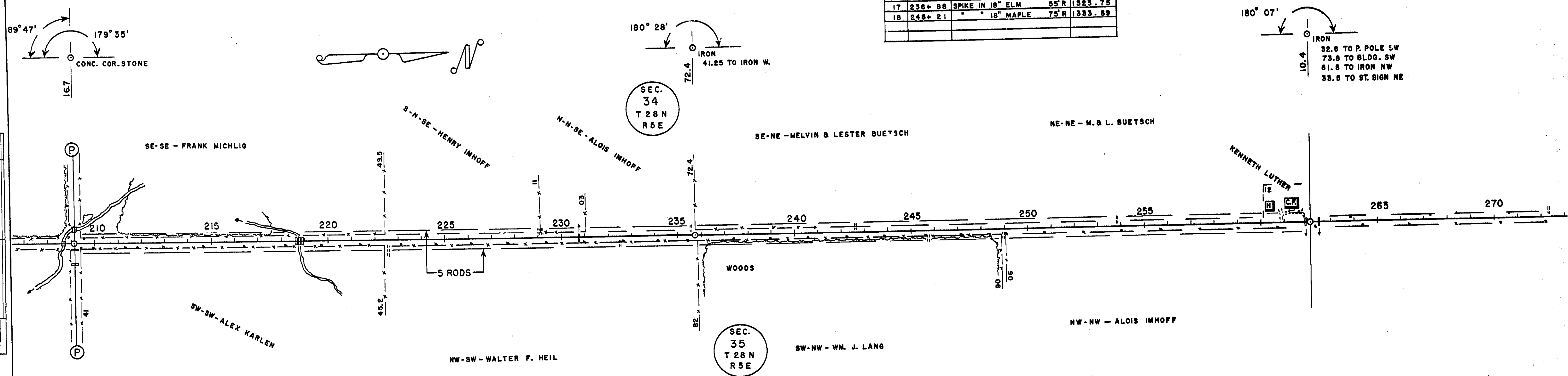
NET LENGTH OF CENTERLINE STA. 159+39.9 TO STA. 209+16.7 = 4,976.8 LIN. FT.



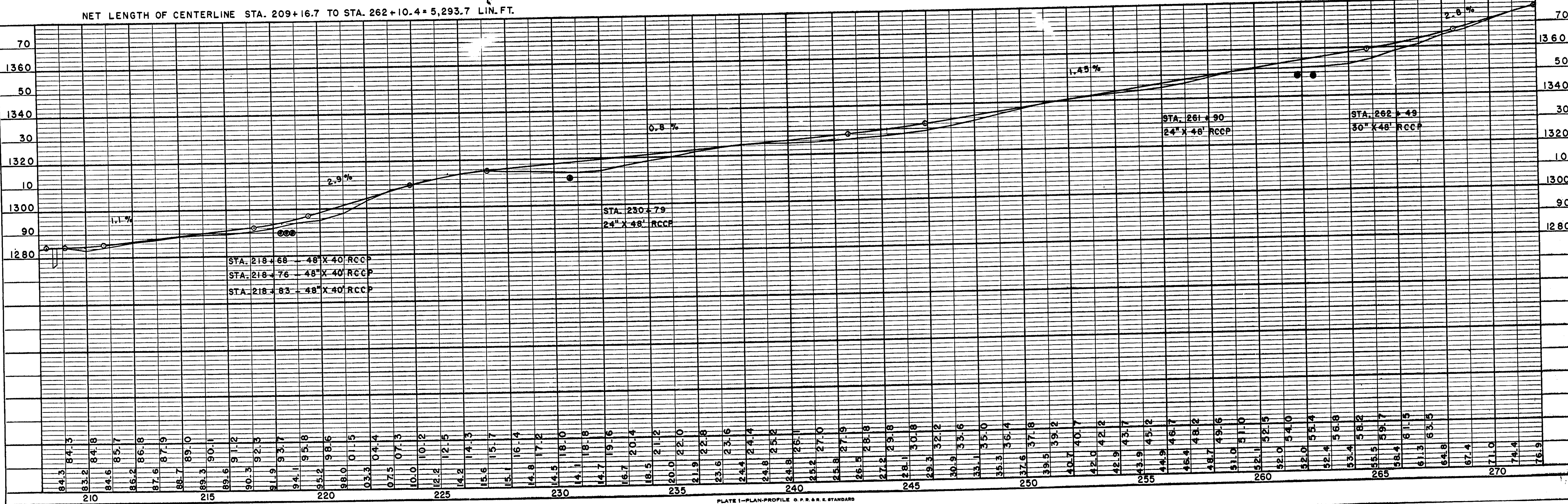
C.T.H. "S" - CASSEL

S.P.R. DIVISION	PROJECT	SHEET NUMBER	TOTAL SHEETS
4			

BENCH MARKS			
15	208+76	TOP SW COR. NW WING	1284.94
16	211+88	U.S.G.S.	26'R 1285.27
17	236+88	SPIKE IN 18" ELM	55'R 1323.75
18	248+21	" " 18" MAPLE	75'R 1333.69



NET LENGTH OF CENTERLINE STA. 209+16.7 TO STA. 262+10.4 = 5,293.7 LIN. FT.



PLAN SURVEYED BY C.E.C. DATE 4-55
 PLOTTED BY C.E.C.
 NOTE BOOK NO. 100
 ALL DIMENSIONS CHECKED
 ALL CORNER MARKS CHECKED

PROFILE SURVEYED BY C.E.C. DATE 4-55
 PLOTTED BY C.E.C.
 NOTE BOOK NO. 100
 ALL DIMENSIONS CHECKED
 ALL CORNER MARKS CHECKED

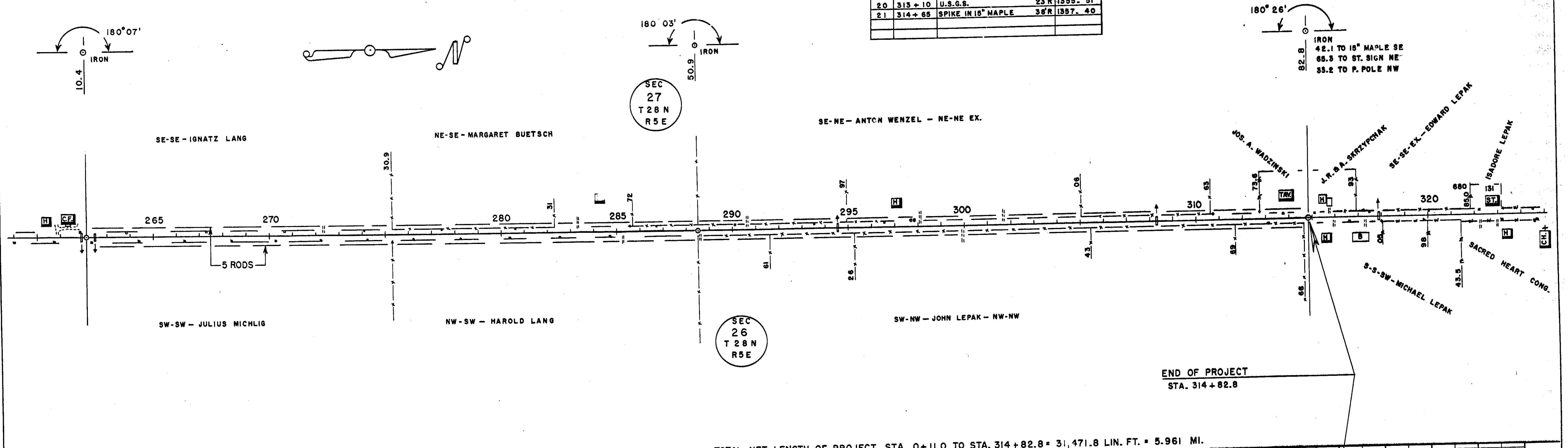
C.T.H. "S" - CASSEL

S.P.R. DIVISION	PROJECT	SHEET NUMBER	TOTAL SHEETS
4			

BENCH MARKS			
18	248+21	SPIKE IN 18" MAPLE	75'R 1333.89
19	288+51	" 15" ELM	60'L 1382.89
20	313+10	U.S.G.S.	23'R 1355.51
21	314+65	SPIKE IN 18" MAPLE	36'R 1357.40

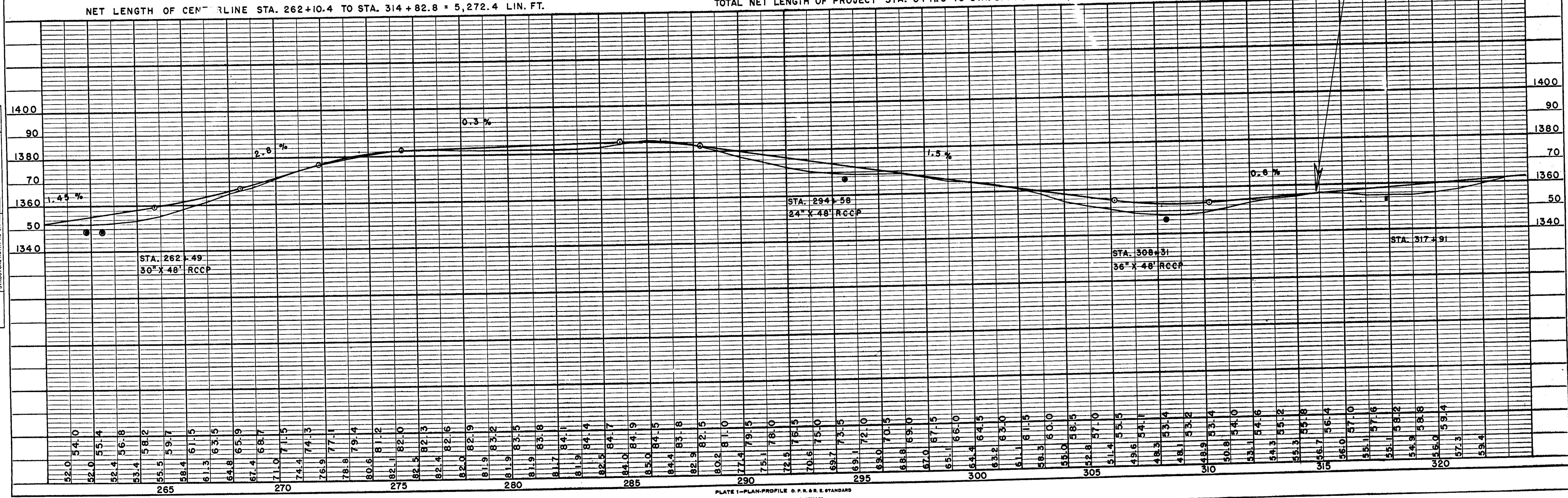
PLAN
 SURVEYED BY C.E.C.
 PLOTTED BY C.E.C.
 CHECKED BY C.E.C.
 DATE 4-53

PROFILE
 SURVEYED BY C.E.C.
 PLOTTED BY C.E.C.
 CHECKED BY C.E.C.
 DATE 4-55



NET LENGTH OF CENTERLINE STA. 262+10.4 TO STA. 314+82.8 = 5,272.4 LIN. FT.

TOTAL NET LENGTH OF PROJECT STA. 0+11.0 TO STA. 314+82.8 = 31,471.8 LIN. FT. = 5.961 MI.

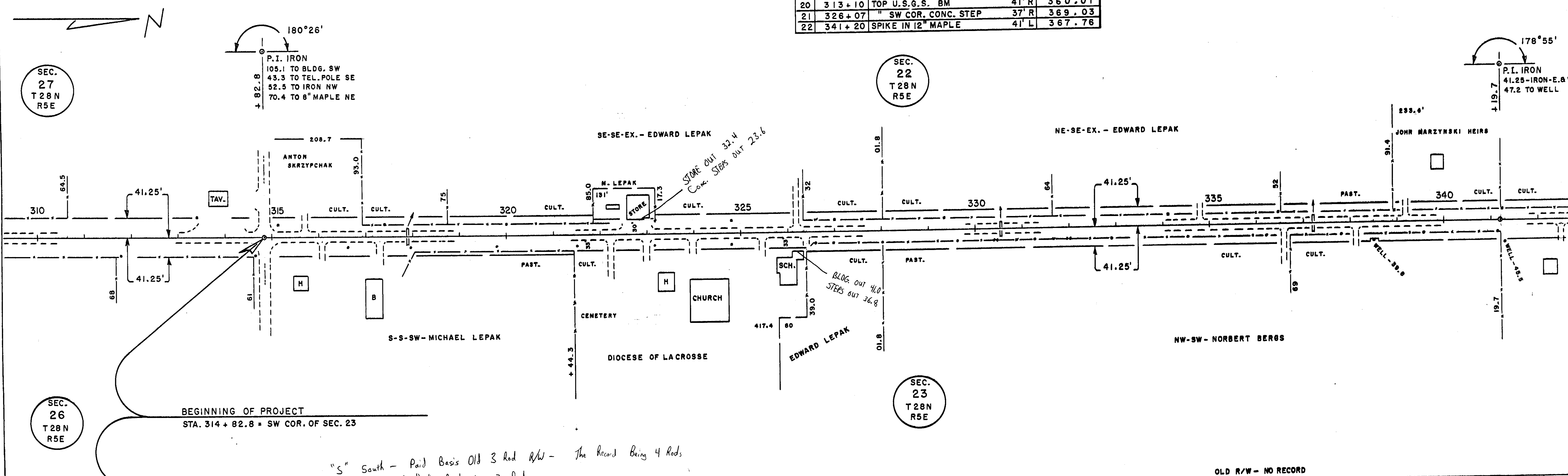


CTH "S" - CASSEL

BENCH MARKS				
20	313+10	TOP U.S.G.S. BM	41' R	360.01
21	326+07	" SW COR. CONC. STEP	37' R	369.03
22	341+20	SPIKE IN 12" MAPLE	41' L	367.76

DATE	BY

DATE	BY
10-76	C.E.C.

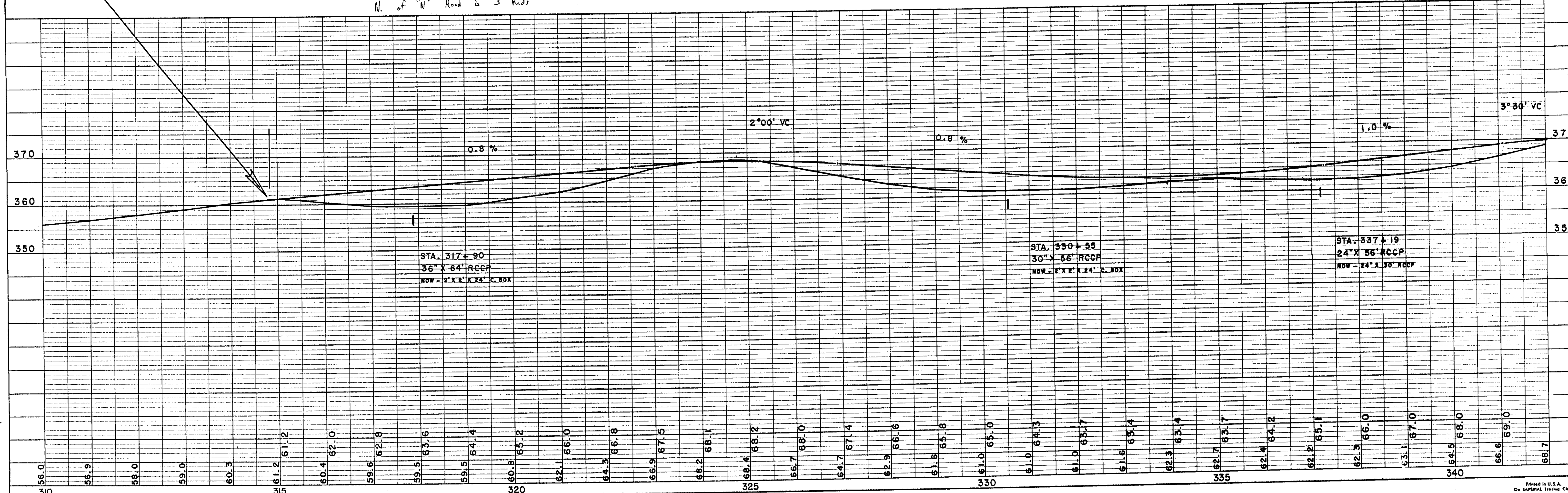


SEC. 23
T 28 N
R 5 E

BEGINNING OF PROJECT
STA. 314 + 82.8 = SW COR. OF SEC. 23

"S" South - Paid Basis Old 3 Rod R/W - The Record Being 4 Rods
N. of "N" Road is 3 Rods

OLD R/W - NO RECORD



CTH "S" - CASSEL

BENCH MARKS			
22	341 + 20	SPIKE IN 12" MAPLE	41' L 367.76
23	365 + 91	" POWER POLE	40' L 315.98
24	367 + 24	TOP CONC. PUMP PLAT.	31' L 318.30

SEC.
22
T28N
R5E

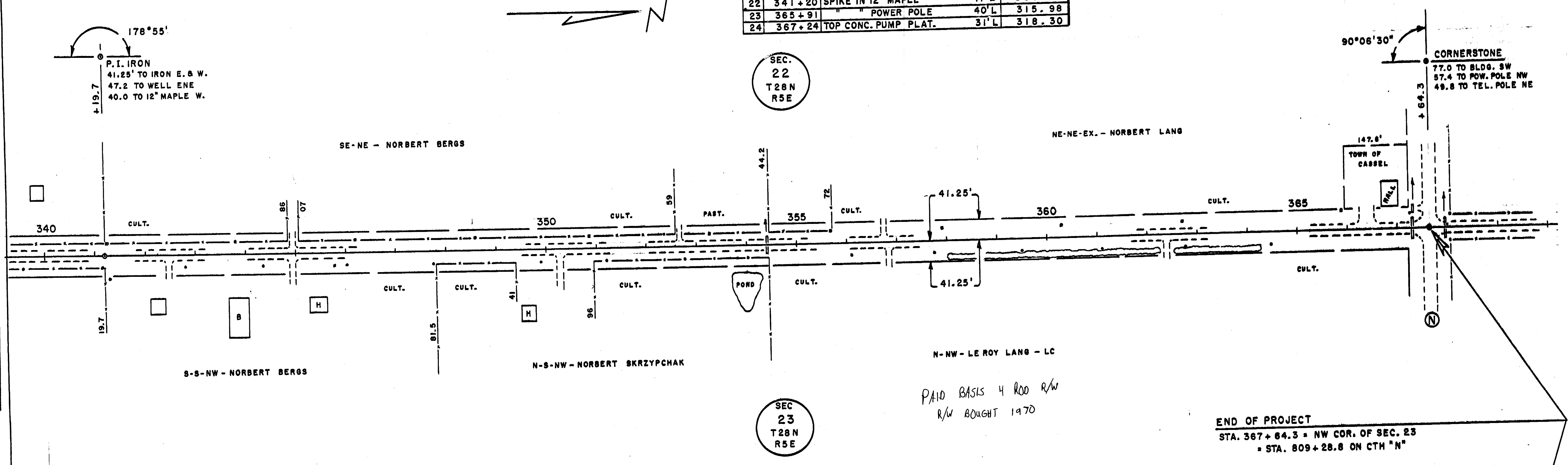
SEC.
23
T28N
R5E

178°55'
P.I. IRON
41.25' TO IRON E. & W.
47.2' TO WELL ENE
40.0' TO 12" MAPLE W.

90°06'30"
CORNERSTONE
77.0 TO BLDG. SW
97.4 TO POW. POLE NW
49.8 TO TEL. POLE NE

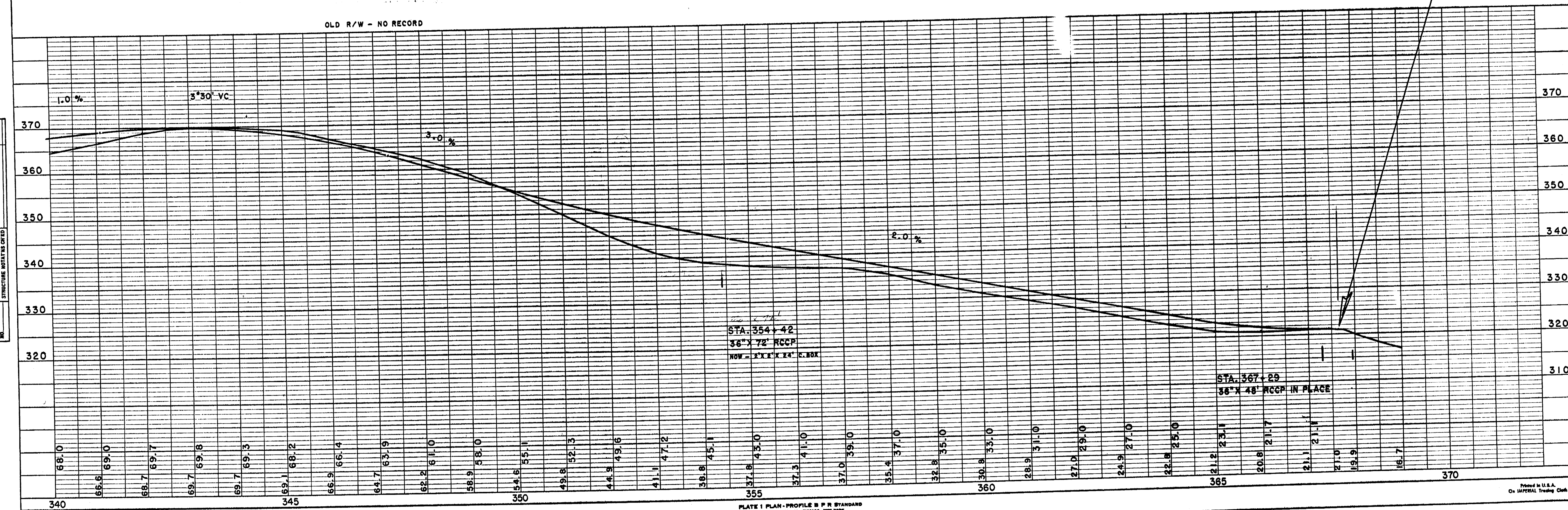
DATE	BY	REVISION

DATE	BY	REVISION
10-70	C.E.C.	



PAID BASIS 4 ROD R/W
R/W BOUGHT 1970

END OF PROJECT
STA. 367 + 64.3 = NW COR. OF SEC. 23
= STA. 809 + 28.8 ON CTH "N"



STA. 354 + 42
36" X 72" RCCP
NOW - 2' X 2' X 24" S. BOX

STA. 367 + 29
36" X 48" RCCP IN PLACE