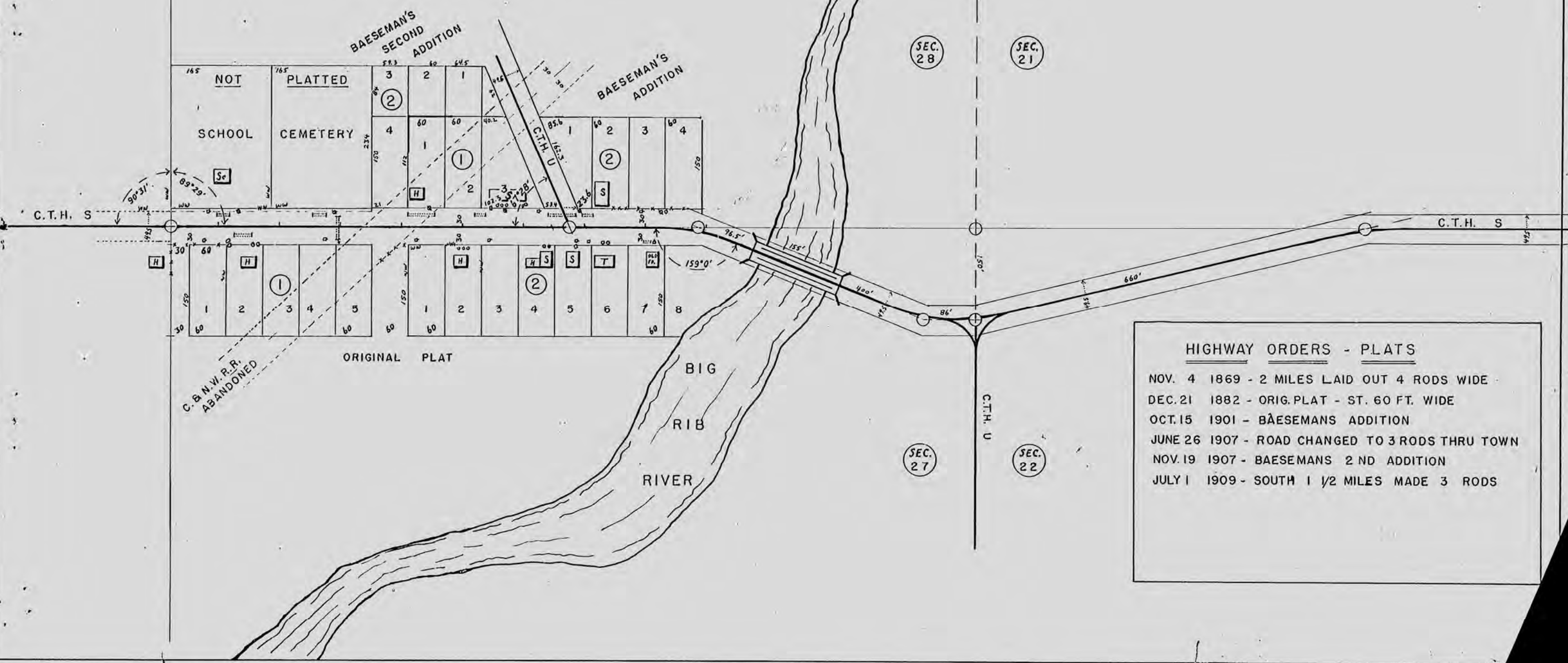


C.T.H. S

S.T.H. 29 - RIB FALLS

HIGHWAY MAP  
 BIG RIB FALLS  
 MARATHON COUNTY HIGHWAY DEPARTMENT  
 PARTIAL SURVEY MAY 1948  
 SCALE - ONE INCH = 100 FEET

T 29 N  
 RIB FALLS  
 R 5 E



HIGHWAY ORDERS - PLATS

NOV. 4 1869 - 2 MILES LAID OUT 4 RODS WIDE  
 DEC. 21 1882 - ORIG. PLAT - ST. 60 FT. WIDE  
 OCT. 15 1901 - BÆSEMANS ADDITION  
 JUNE 26 1907 - ROAD CHANGED TO 3 RODS THRU TOWN  
 NOV. 19 1907 - BÆSEMANS 2 ND ADDITION  
 JULY 1 1909 - SOUTH 1 1/2 MILES MADE 3 RODS

NOT DRAWN TO SCALE

MILE ONE

S.T.H. 29  
S 89° 03' E

S 89° 03' E

S.T.H. 29  
S 89° 18' E

① SE-SE

VERNON FISCHER

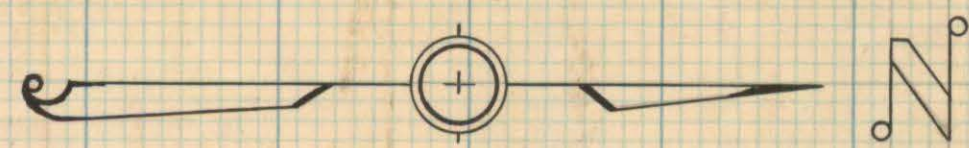
0.594 A.

T 29 N  
33  
R 5 E

③ E 1/2-NE + NE-SE

DOUGLAS + ADELIA RINGLE

1.491 A.



40  
0  
10  
40

40  
10  
10  
40

40  
10  
10  
40

C.T.H. S

1065+88.9

HEIRS OF  
CHARLES LEITERMAN

0.594 A.

MARVIN + EMMILE RINGLE

0.500 A.

HERBERT + LEONA RINGLE

1.000 A.

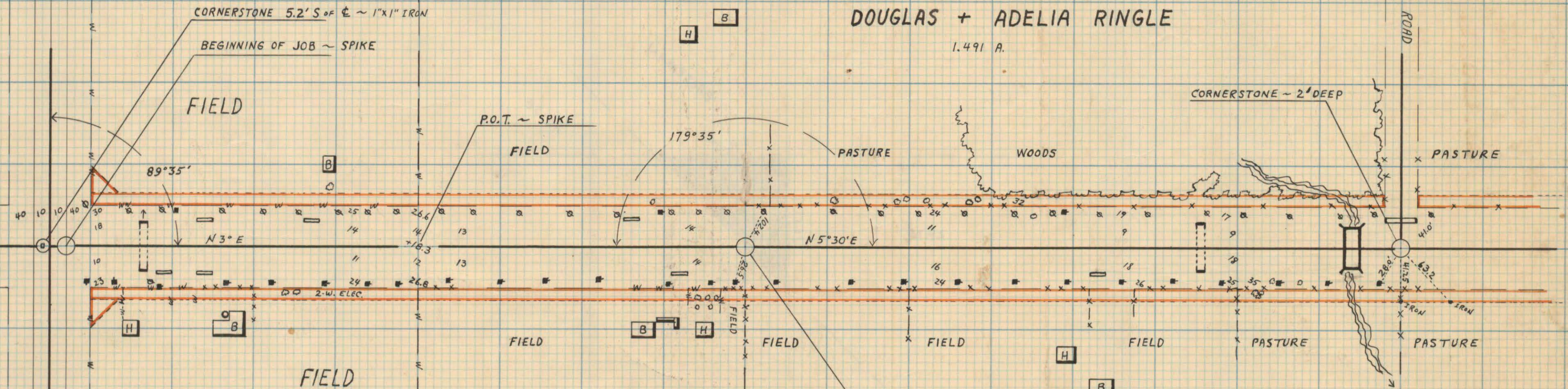
② SW-SW

④ NW-SW

⑤ W 1/2-NW

T 29 N  
34  
R 5 E

TOWN ROAD



1071+56.8 P.C. ⊕ Δ = 0°13'  
1072+00 P.I. ⊕ D = 0°15'  
1072+43.2 P.T. ⊕ T = 43.2'

66 RODS B.W.  
12 RODS W.W.

