

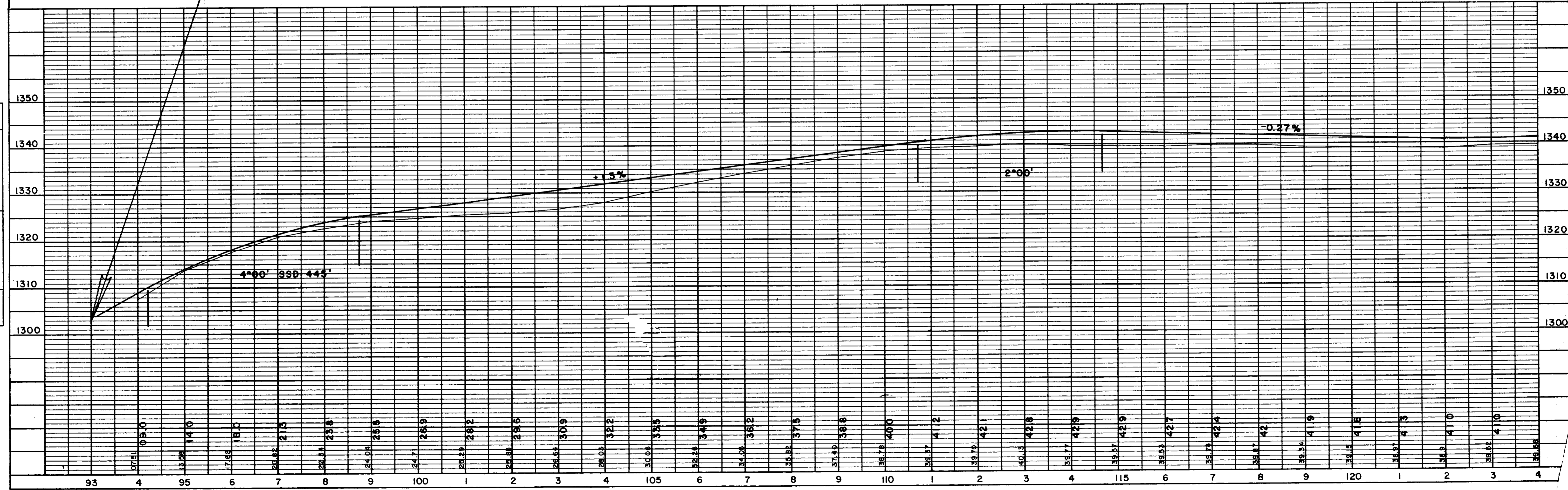
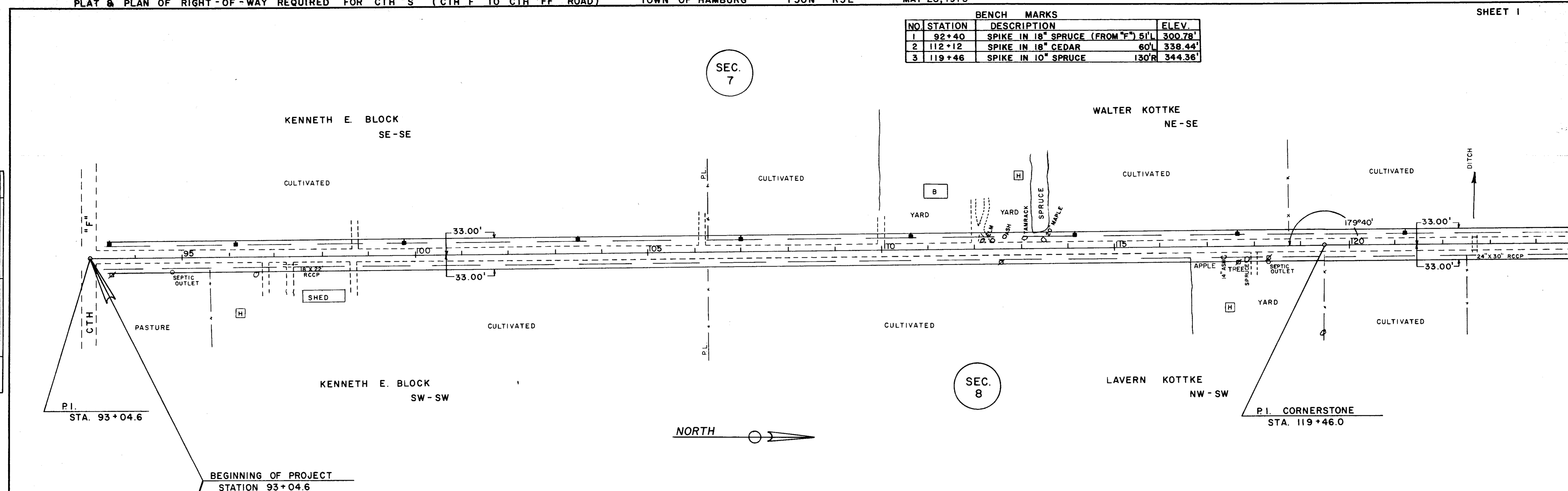
BENCH MARKS			
NO	STATION	DESCRIPTION	ELEV.
1	92+40	SPIKE IN 18" SPRUCE (FROM "F") 51'L	300.78'
2	112+12	SPIKE IN 18" CEDAR 60'L	338.44'
3	119+46	SPIKE IN 10" SPRUCE 130'R	344.36'

SEC. 7

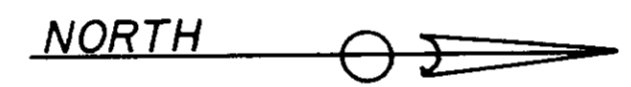
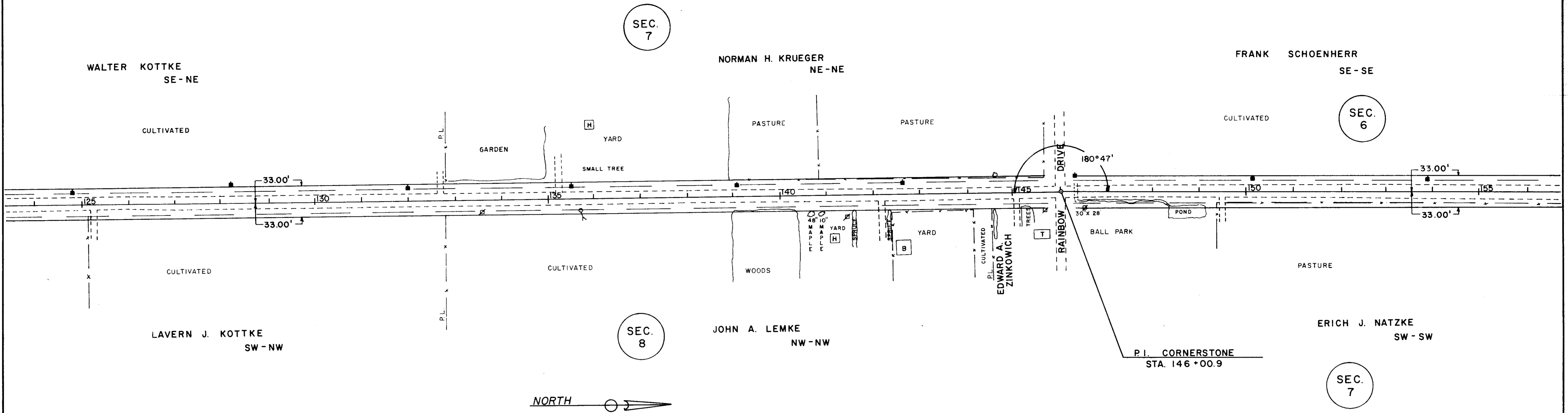
SEC. 8

PLAN
 SURVEYED
 PLOTTED
 ALIGNMENT CHECKED
 RT. OF WAY CHECKED
 NO. _____
 BY _____
 DATE _____

PROFILE
 SURVEYED
 PLOTTED
 GRADES CHECKED
 ELEV. NOTED
 STRUCTURE NOTATIONS CHECKED
 NO. _____
 BY _____
 DATE _____

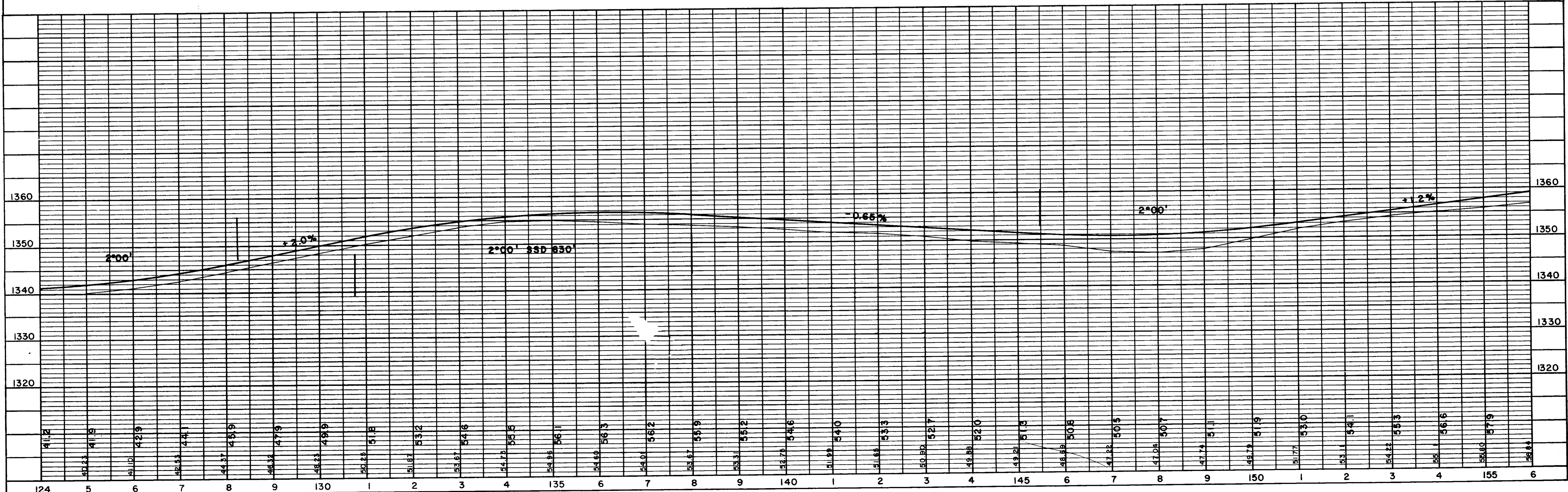


BENCH MARKS			
NO.	STATION	DESCRIPTION	ELEV.
4	135+00	SPIKE IN POWER POLE	175'L 352.51'
5	145+24	SPIKE IN 10" BIRCH	42'R 350.48'



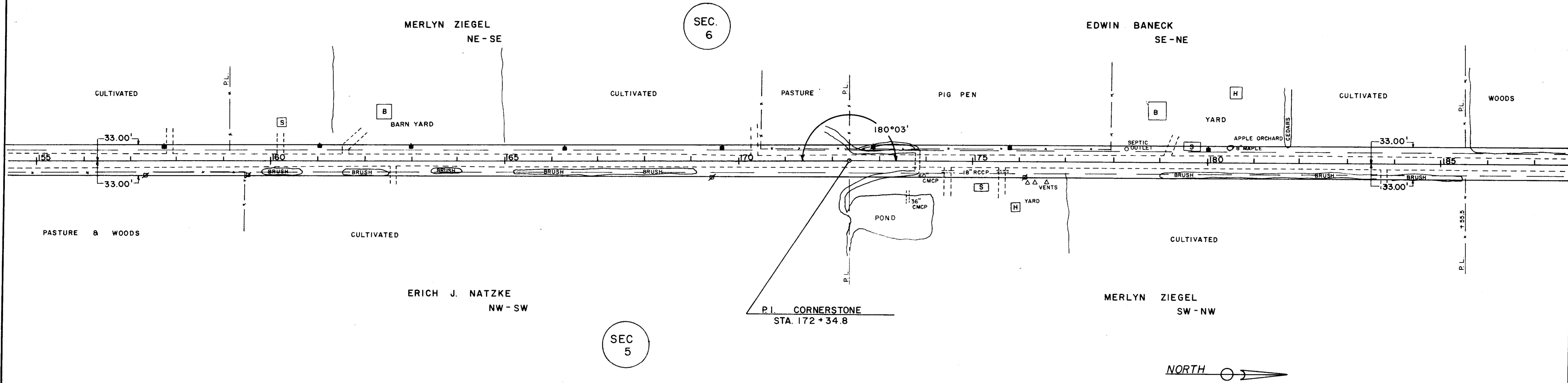
PLAN	DATE
SUBMITTED	
NOTED	
ALIGNMENT CHECKED	
RT. OF WAY CHECKED	
NO.	

PROFILE	DATE
SUBMITTED	
NOTED	
GRADES CHECKED	
B. M.'S NOTED	
STRUCTURE NOTATIONS CHKD.	
NO.	

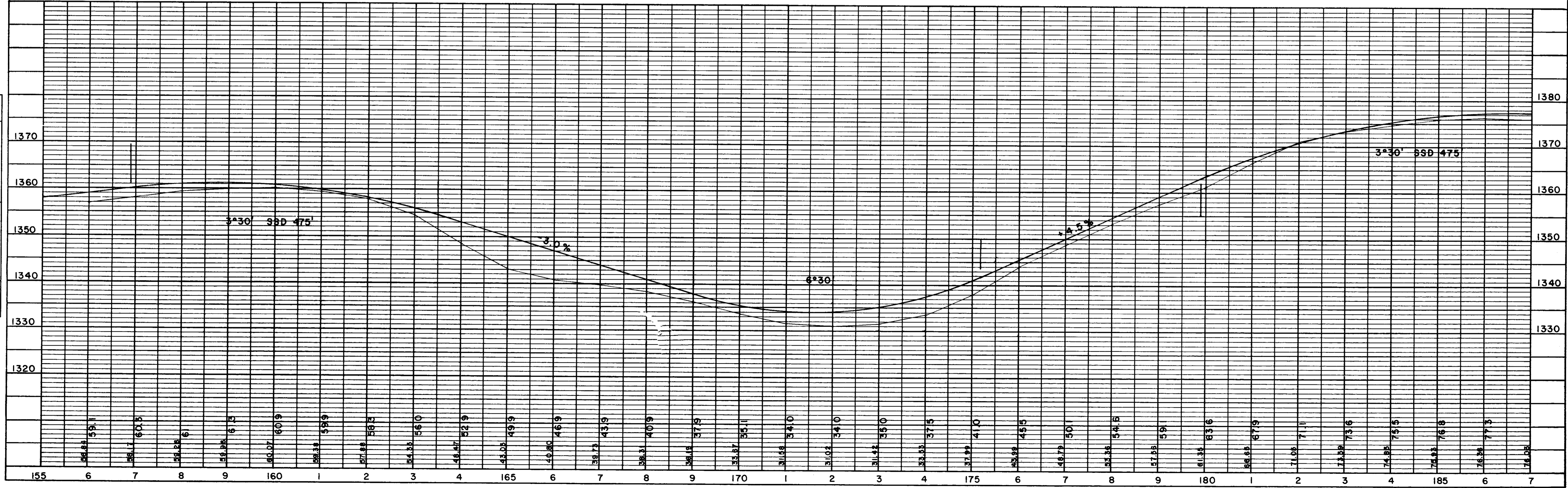


NO.	STATION	BENCH MARKS DESCRIPTION	ELEV.
6	157+95	SPIKE IN 6" MAPLE	70' R 361.53'
7	171+50	SPIKE IN 18" PINE	40' L 328.63'
8	181+75	SPIKE IN 14" CEDAR	60' L 371.32'

PLAN	DATE
SURVEYED	
PLOTTED	
ALIGNED CHECKED	
BY	
NOTE BOOK NO.	



PROFILE	DATE
SURVEYED	
PLOTTED	
STRUCTURE NOTATION CHECKED	
BY	
NOTE BOOK NO.	



BENCH MARKS			
NO.	STATION	DESCRIPTION	ELEV.
9	189+60	SPIKE IN 4" SPRUCE	39R 372.75'
10	200+25	SPIKE IN TWIN ASH	48L 359.08'

PLAN	SURVEYED	DATE
	PLOTTED	
	NOTED	
	BY	
	NO.	

PROFILE	SURVEYED	DATE
	PLANNED	
	NOTED	
	BY	
	NO.	

