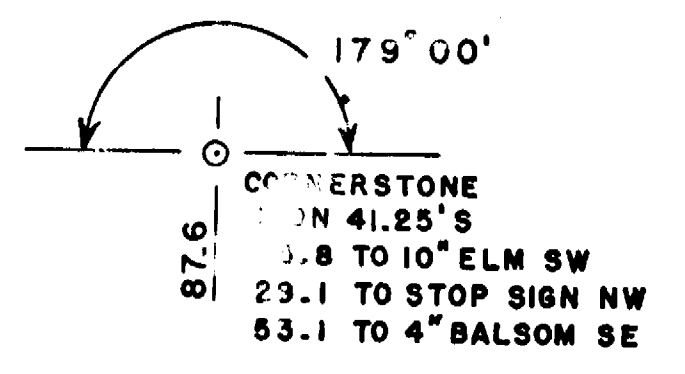
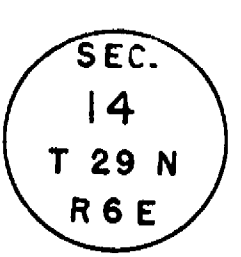
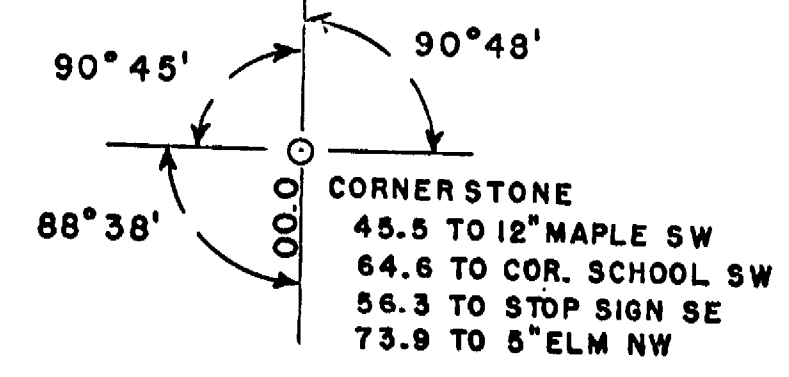
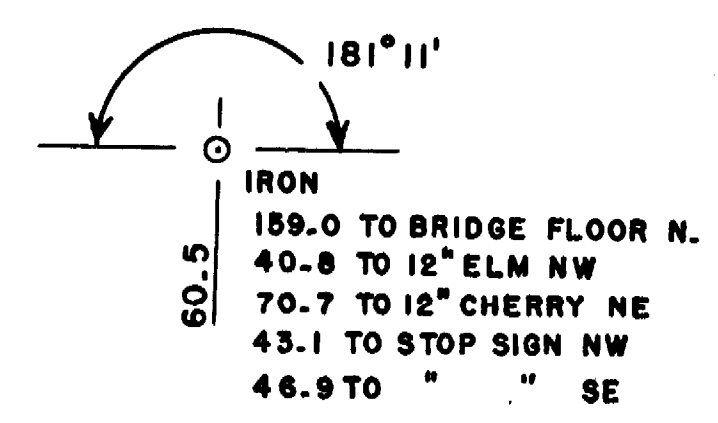


C.T.H. "U" - TOWN OF STETTIN



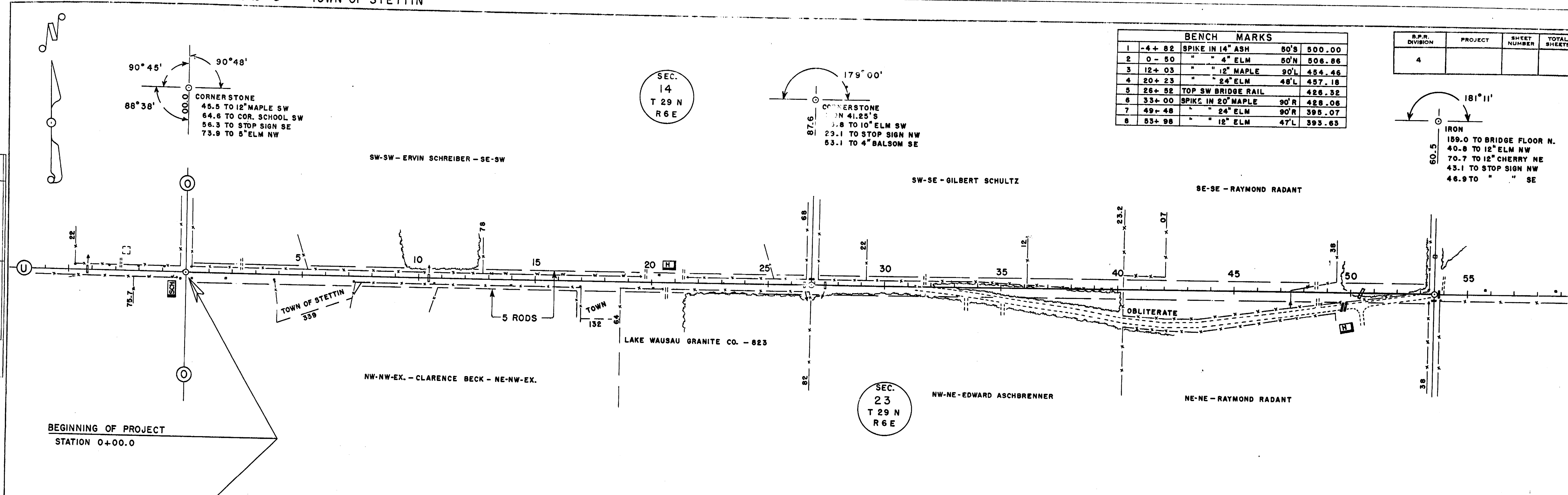
BENCH MARKS			
1	-4+82	SPIKE IN 14" ASH	50'S 500.00
2	0-50	" 4" ELM	50'N 506.86
3	12+03	" 12" MAPLE	90'L 454.46
4	20+23	" 24" ELM	48'L 457.18
5	26+52	TOP SW BRIDGE RAIL	426.32
6	33+00	SPIKE IN 20" MAPLE	90'R 428.06
7	49+48	" 24" ELM	90'R 398.07
8	53+98	" 12" ELM	47'L 395.65

B.P.R. DIVISION	PROJECT	SHEET NUMBER	TOTAL SHEETS
4			



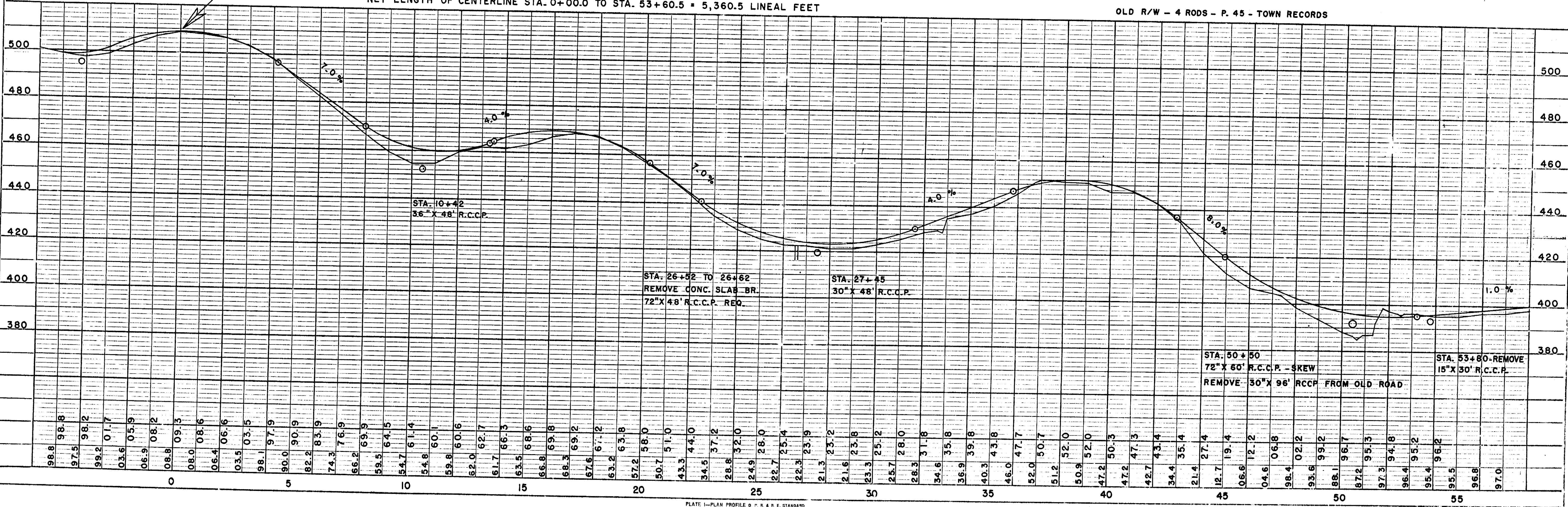
PLAN SURVEYED BY C.E.C. DATE 12-55
 NOTE BOOK NO. 107147-HECKED
 NO. 107147-REKED

PROFILE SURVEYED BY C.E.C. DATE 12-55
 NOTE BOOK NO. 107147-HECKED
 NO. 107147-REKED



NET LENGTH OF CENTERLINE STA. 0+00.0 TO STA. 53+60.5 = 5,360.5 LINEAL FEET

OLD R/W - 4 RODS - P. 45 - TOWN RECORDS



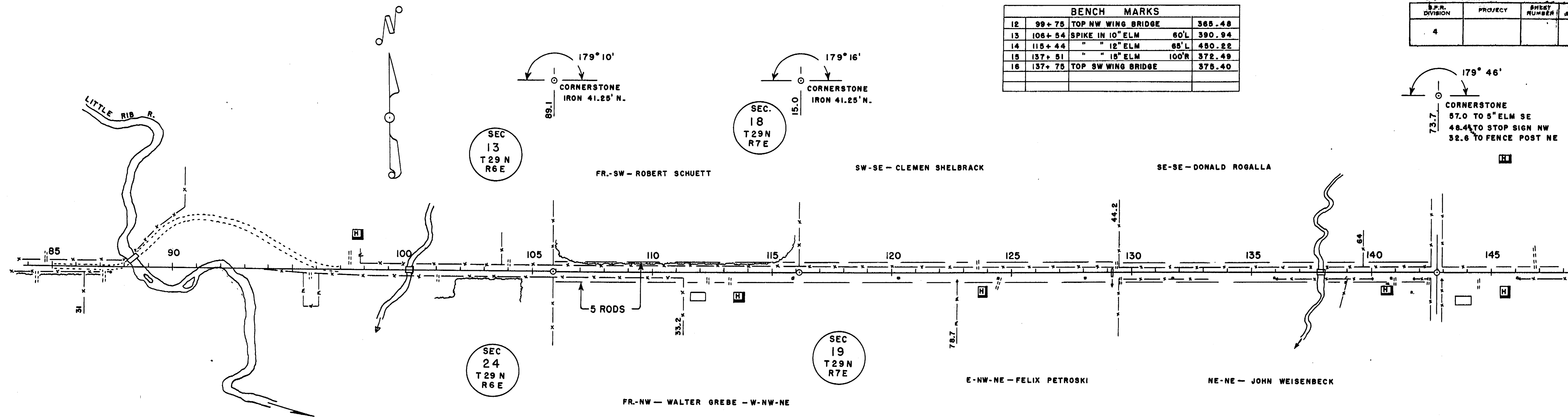
C.T.H. "U" - TOWN OF MAINE

PLAN
 SURVEYED BY C.E.C.
 DATE 1-56
 NOTE BOOK NO. 1-56
 ALIGNMENT CHECKED BY C.E.C.
 R.F. OF WAY CHECKED BY C.E.C.

PROFILE
 SURVEYED BY C.E.C.
 DATE 1-56
 NOTE BOOK NO. 1-56
 GROSS CHECKED BY C.E.C.
 STRUCTURE NOTATIONS CHD.

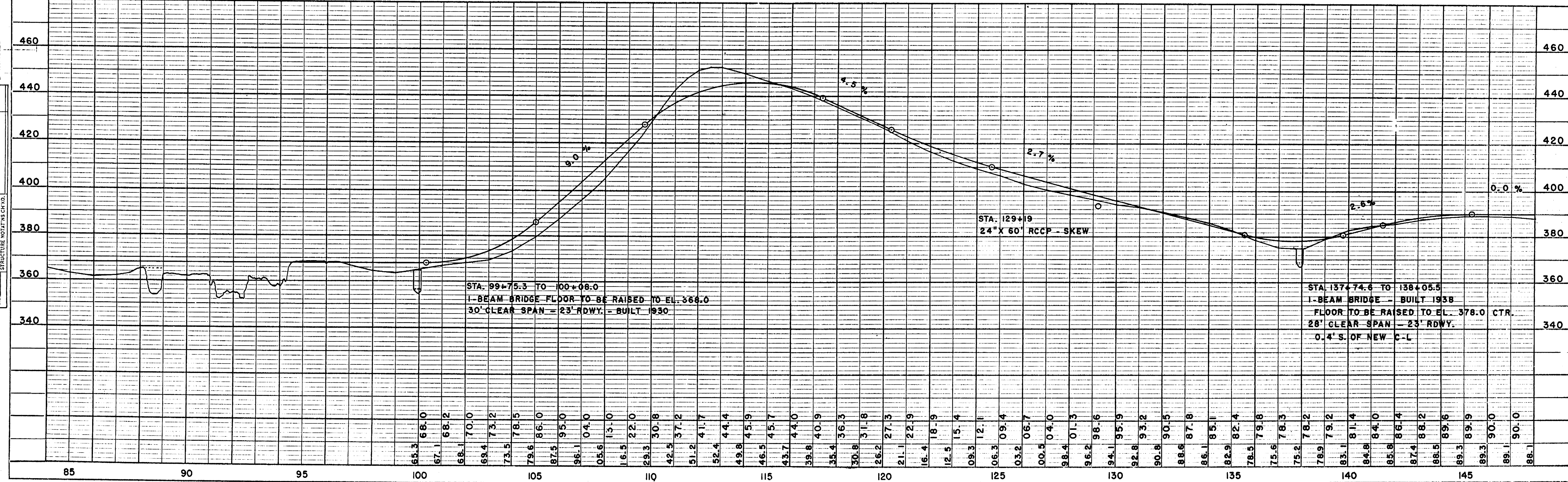
BENCH MARKS		
12	99+75	TOP NW WING BRIDGE 365.48
13	106+54	SPIKE IN 10" ELM 60'L 390.94
14	115+44	" " 12" ELM 85'L 480.22
15	137+51	" " 18" ELM 100'R 372.49
16	137+78	TOP SW WING BRIDGE 375.40

D.P.R. DIVISION	PROJECT	SHEET NUMBER	TOTAL SHEETS
4			



NET LENGTH OF CENTERLINE STA. 105+89.1 TO STA. 142+73.7 = 3,684.6 LINEAL FEET

OLD R/W - 3 RODS - P. 74 & 79 - TOWN RECORDS



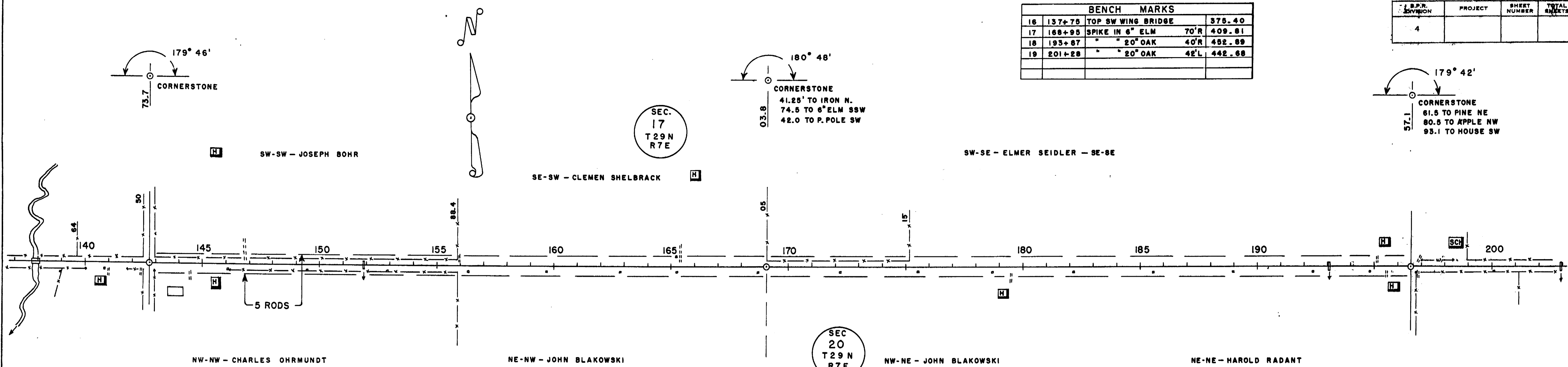
C.T.H. "U" - TOWN OF MAINE

BENCH MARKS			
16	137+75	TOP SW WING BRIDGE	375.40
17	166+95	SPIKE IN 6" ELM 70'R	409.81
18	193+87	" " 20" OAK 40'R	452.89
19	201+28	" " 20" OAK 42'L	442.68

D.P.R. DIVISION	PROJECT	SHEET NUMBER	TOTAL SHEETS
4			

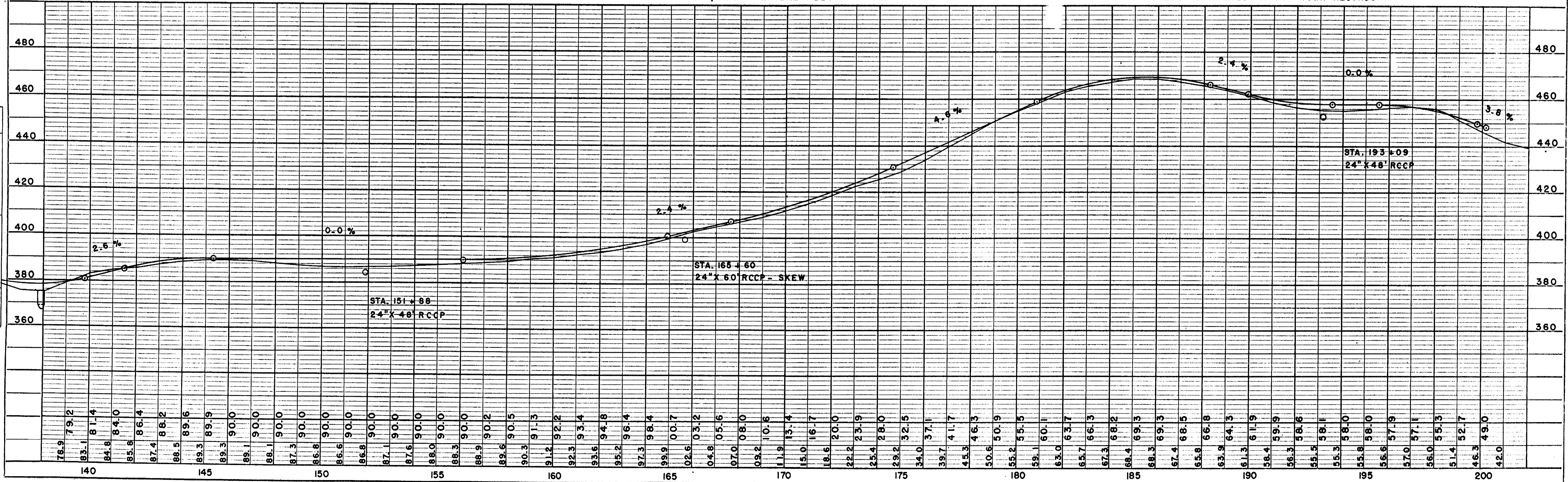
PLAN
 SURVEYED BY: C. E. C.
 DATE: 1-56
 NOTE BOOK NO.:

PROFILE
 SURVEYED BY: C. E. C.
 DATE: 1-56
 NOTE BOOK NO.:



NET LENGTH OF CENTERLINE STA. 142+73.7 TO STA. 196+57.1 = 5,383.4 LINEAL FEET

OLD R/W - 3 RODS - P. 106 - TOWN RECORDS



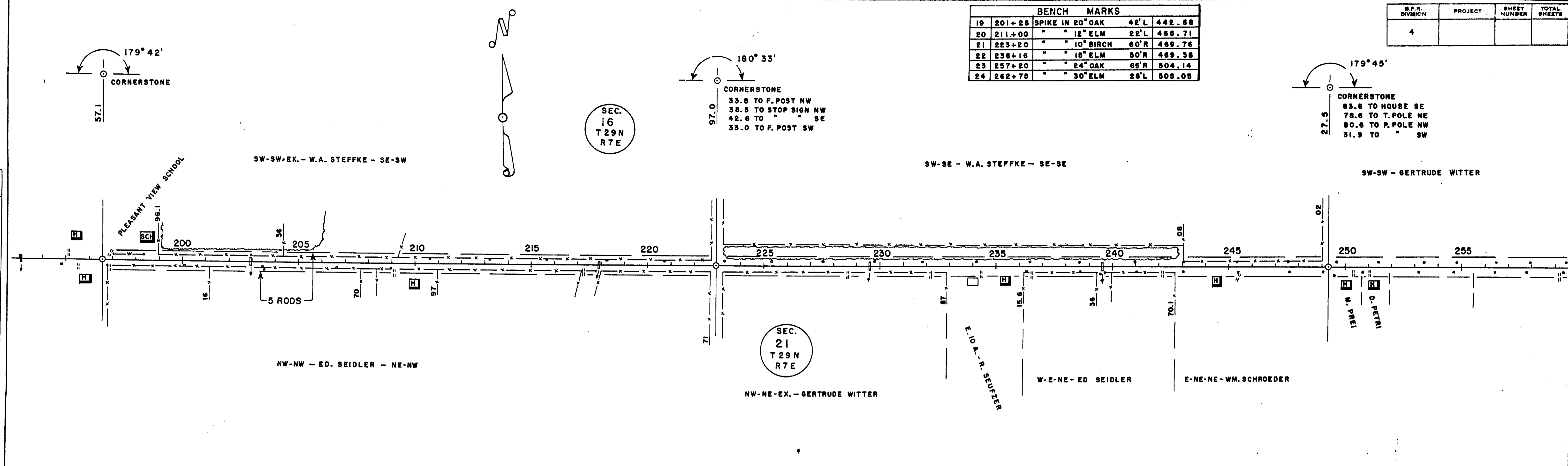
C.T.H. "U" - TOWN OF MAINE

BENCH MARKS				
19	201+28	SPIKE IN 20" OAK	42'L	442.68
20	211+00	" 12" ELM	22'L	465.71
21	223+20	" 10" BIRCH	60'R	469.76
22	236+16	" 15" ELM	50'R	469.38
23	257+20	" 24" OAK	65'R	504.14
24	262+75	" 30" ELM	28'L	505.05

S.P.R. DIVISION	PROJECT	SHEET NUMBER	TOTAL SHEETS
4			

PLAN	DATE
NO. 1	1-86

PROFILE	DATE
NO. 1	1-86



NET LENGTH OF CENTERLINE STA. 196+57.1 TO STA. 249+27.5 = 5,270.4 LINEAL FEET

