

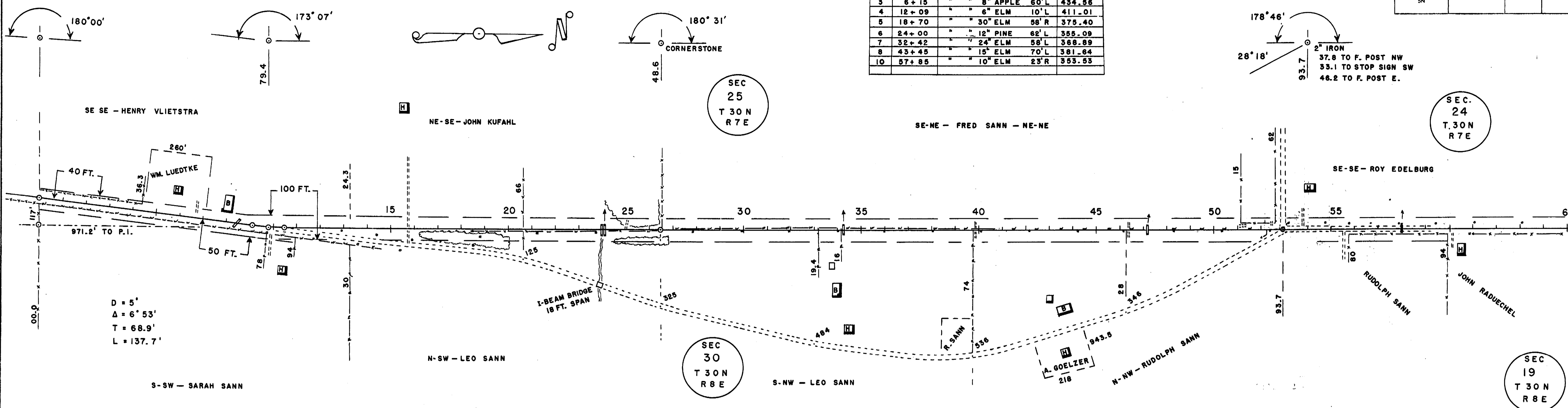
C.T.H. "W" - TOWN OF TEXAS - 1954 & 1955

BENCH MARKS				
2	2A+15	SPIKE IN 30" ELM	90'L	487.06
3	6+15	" 8" APPLE	60'L	434.56
4	12+09	" 6" ELM	10'L	411.01
5	18+70	" 30" ELM	58'R	375.40
6	24+00	" 12" PINE	62'L	355.09
7	32+42	" 24" ELM	58'L	368.89
8	43+45	" 15" ELM	70'L	361.64
10	57+85	" 10" ELM	23'R	353.53

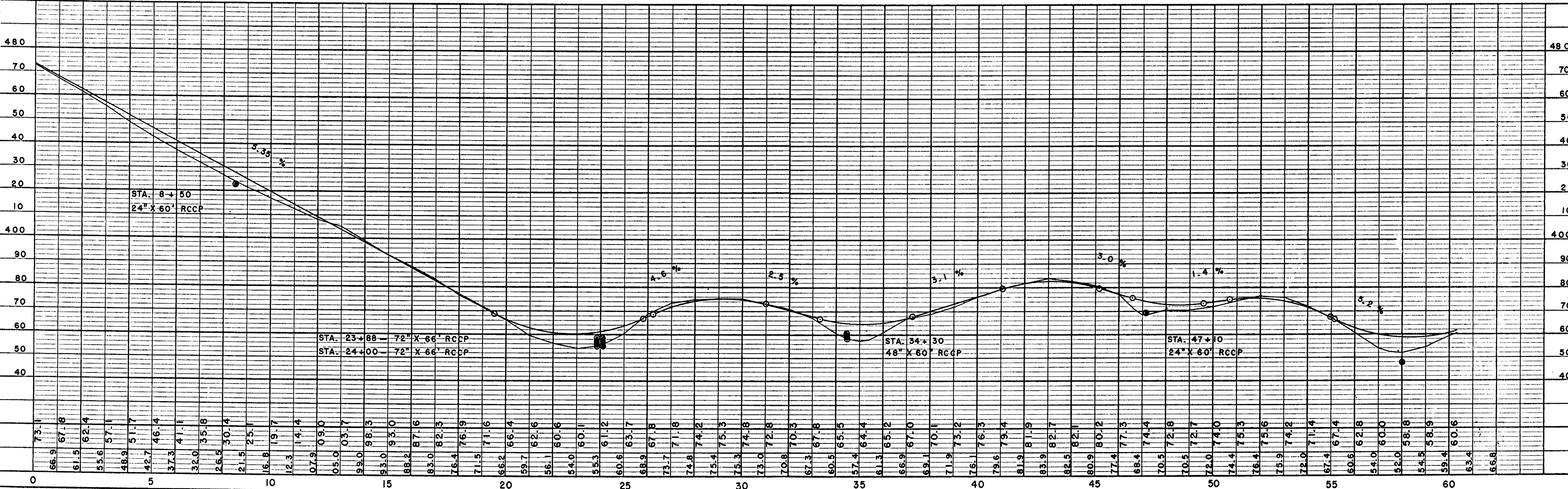
B.P.R. DIVISION	PROJECT	SHEET NUMBER	TOTAL SHEETS
5N			

PLAN
 CHECKED BY
 C. E. C.
 4-54
 NOTE BOOK CHECKED
 NO. OF PAGES CHECKED

PROFILE
 CHECKED BY
 C. E. C.
 4-54
 NOTE BOOK CHECKED
 NO. OF STATIONS CHECKED



NET LENGTH OF CENTERLINE STA. 0+00 TO STA. 52+93.7 = 5,293.7 LIN. FT.



C.T.H. "W"

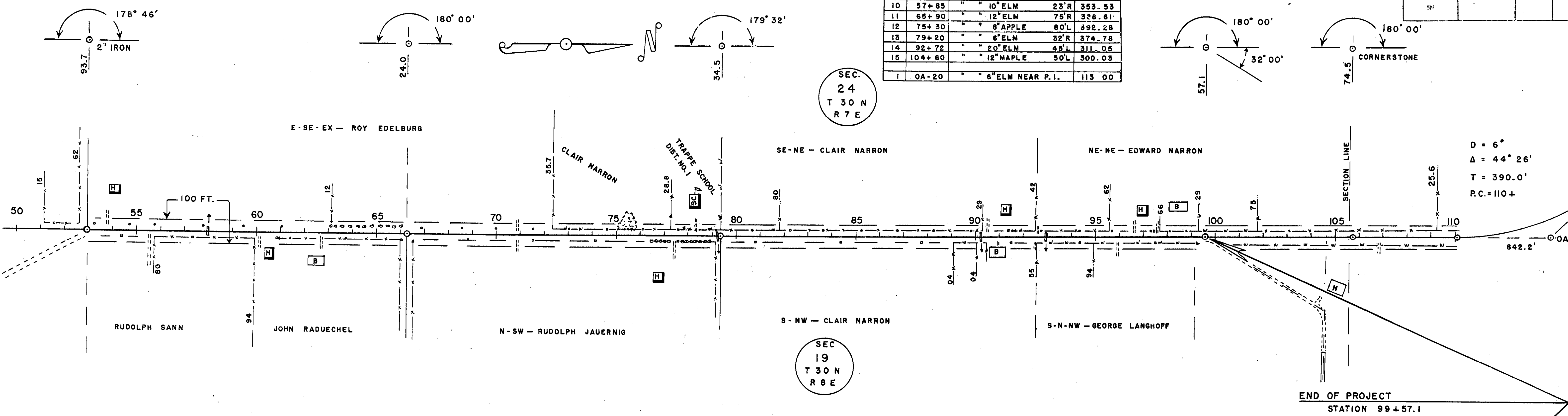
BENCH MARKS			
9	54+20	SPIKE IN P. POLE	46'R 374.65
10	57+85	" 10" ELM	23'R 353.53
11	65+90	" 12" ELM	75'R 328.61
12	75+30	" 8" APPLE	80'L 392.26
13	79+20	" 6" ELM	32'R 374.78
14	92+72	" 20" ELM	45'L 311.05
15	104+60	" 12" MAPLE	50'L 300.03
1	0A-20	" 6" ELM NEAR P.I.	113 00

B.P.M. DIVISION	PROJECT	SHEET NUMBER	TOTAL SHEETS
SN			

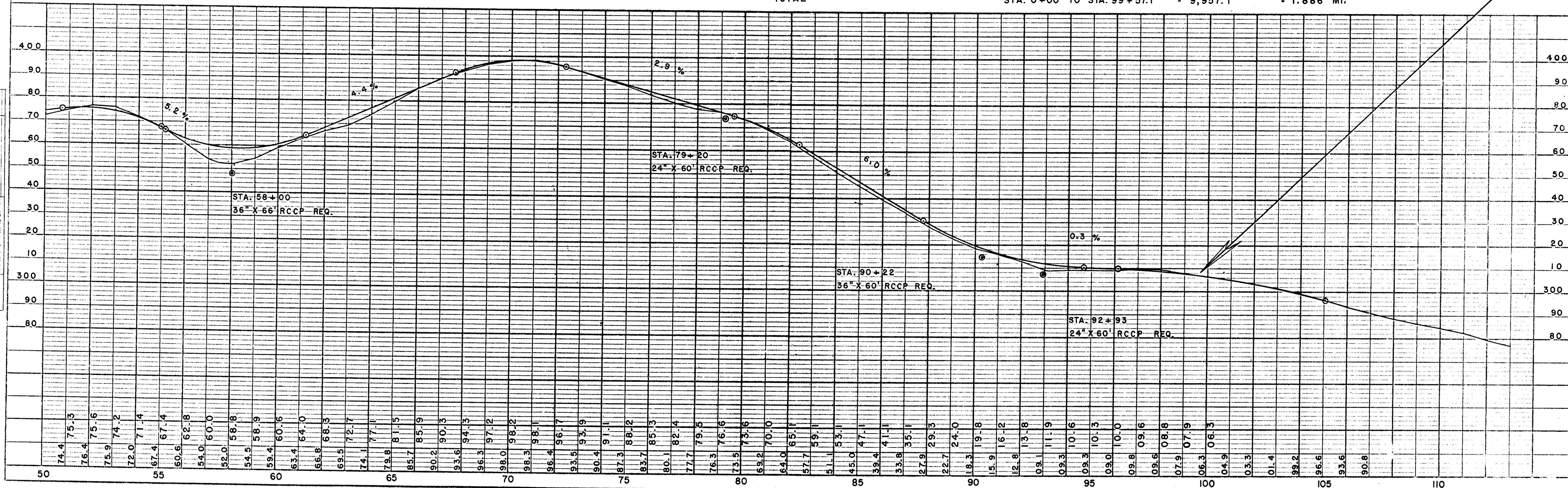
SEC. 24
T 30 N
R 7 E

SEC. 19
T 30 N
R 8 E

D = 6°
Δ = 44° 26'
T = 390.0'
R.C. = 110+



NET LENGTH OF CENTERLINE STA. 52+93.7 TO STA. 99+57.1 = 4,663.4 LIN. FT.
TOTAL " " " " " " STA. 0+00 TO STA. 99+57.1 = 9,957.1 " " = 1.886 MI.



C.E.C. 2-55

C.E.C. 2-55