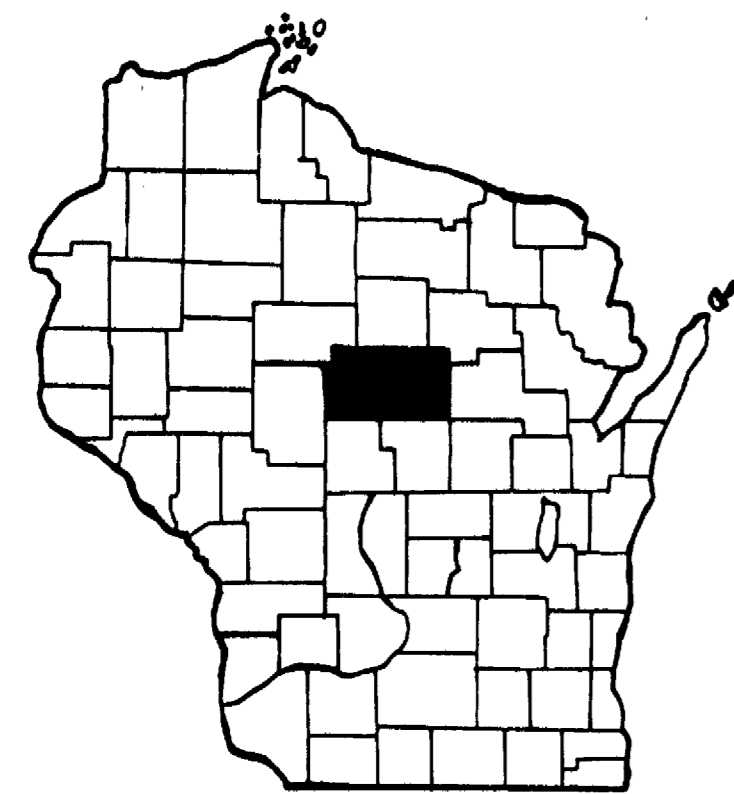


# MARATHON COUNTY HIGHWAY DEPARTMENT

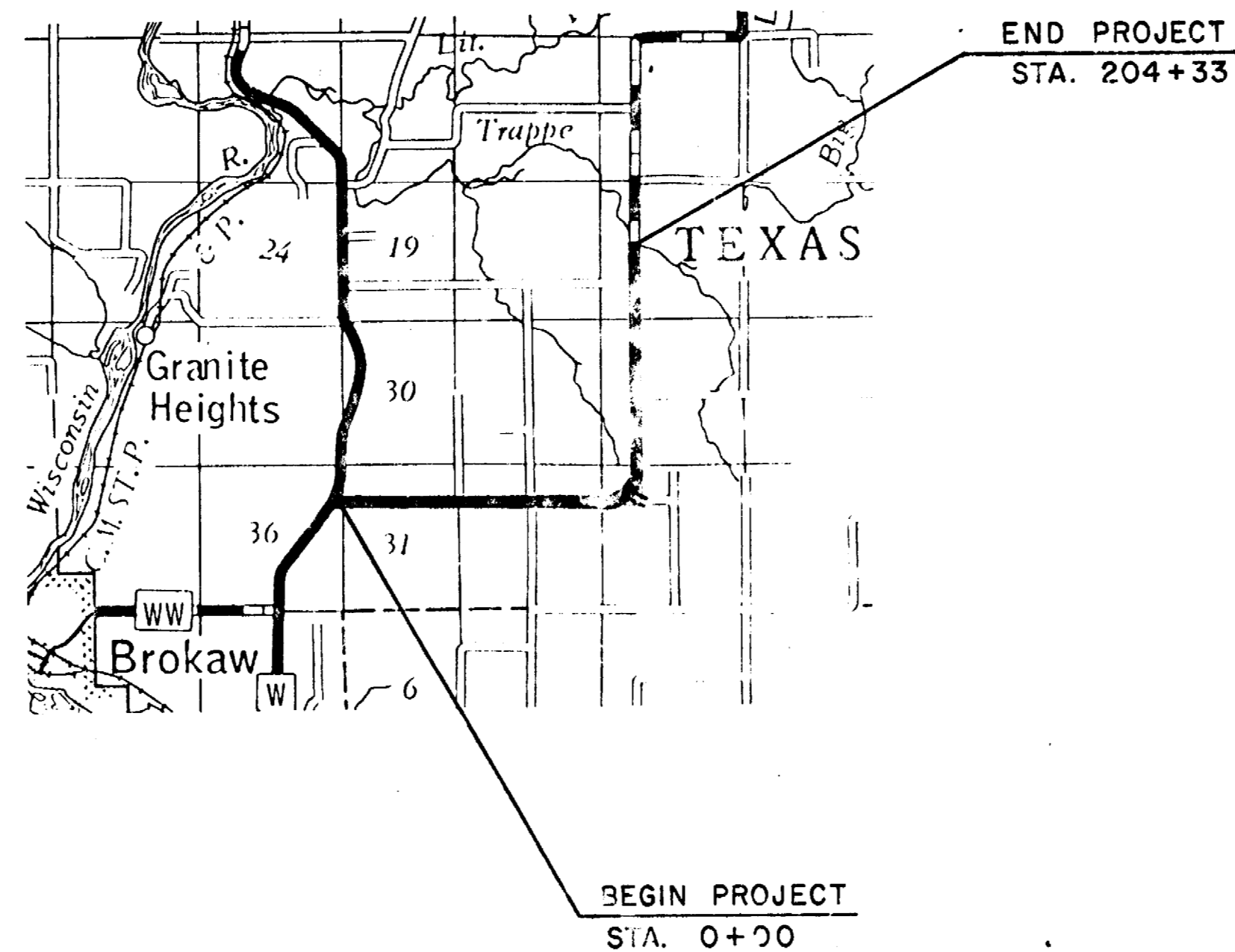
PLAN AND PROFILE OF PROPOSED

## CTH "WW"

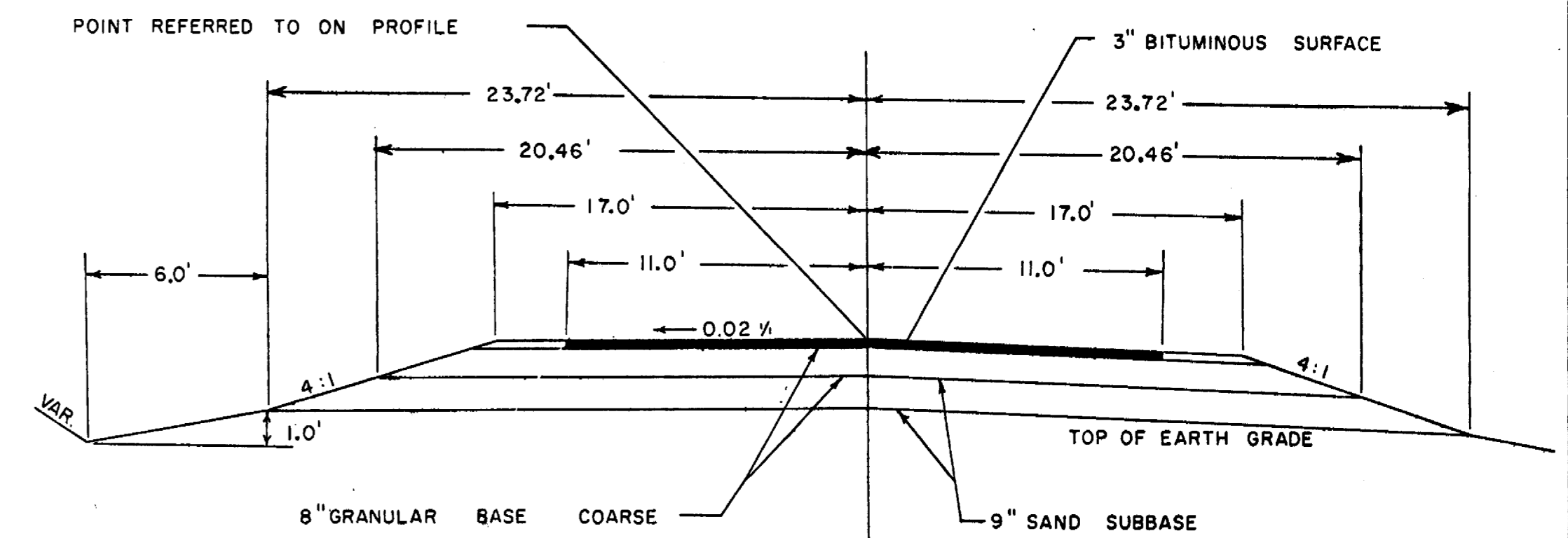
CTH "W" TO TRAPPE RIVER



	BERN	HALSEY	HAMBURG	BERLIN	MAINE	TEXAS	NEWITT	HARRISON
MALTON	JOHNSON	RIEBROOK	RIP FALLS	STETTIN	WISCONSIN	WISAU	ERSTON	FLOWER
HILL	FRANKFORD	WIEN	CASSEL	MARATHON	MOSNEE RIB MT.	WESTON	RINGLE	NORRIE
SPENCER	EAU PLAIN	CLEVELAND	EMMET	MOSNEE RIB MT.	KRONENWETTER	REID	ELDERON	
	MCILLAN	BAY	GREEN VALLEY	BERGEN	HOWLTON	GENTNER	BEKAT	FRANZEN



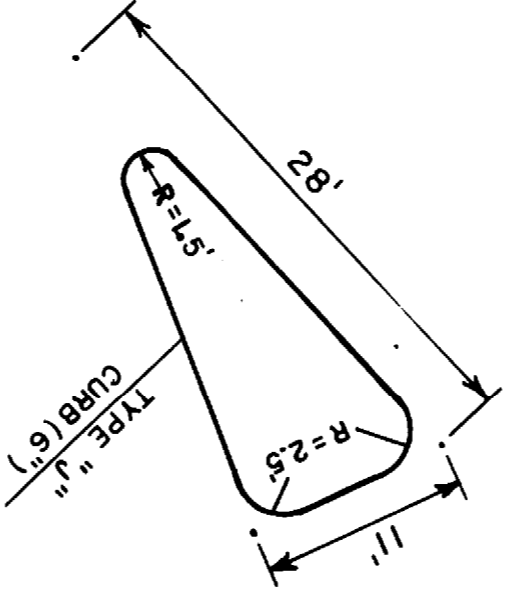
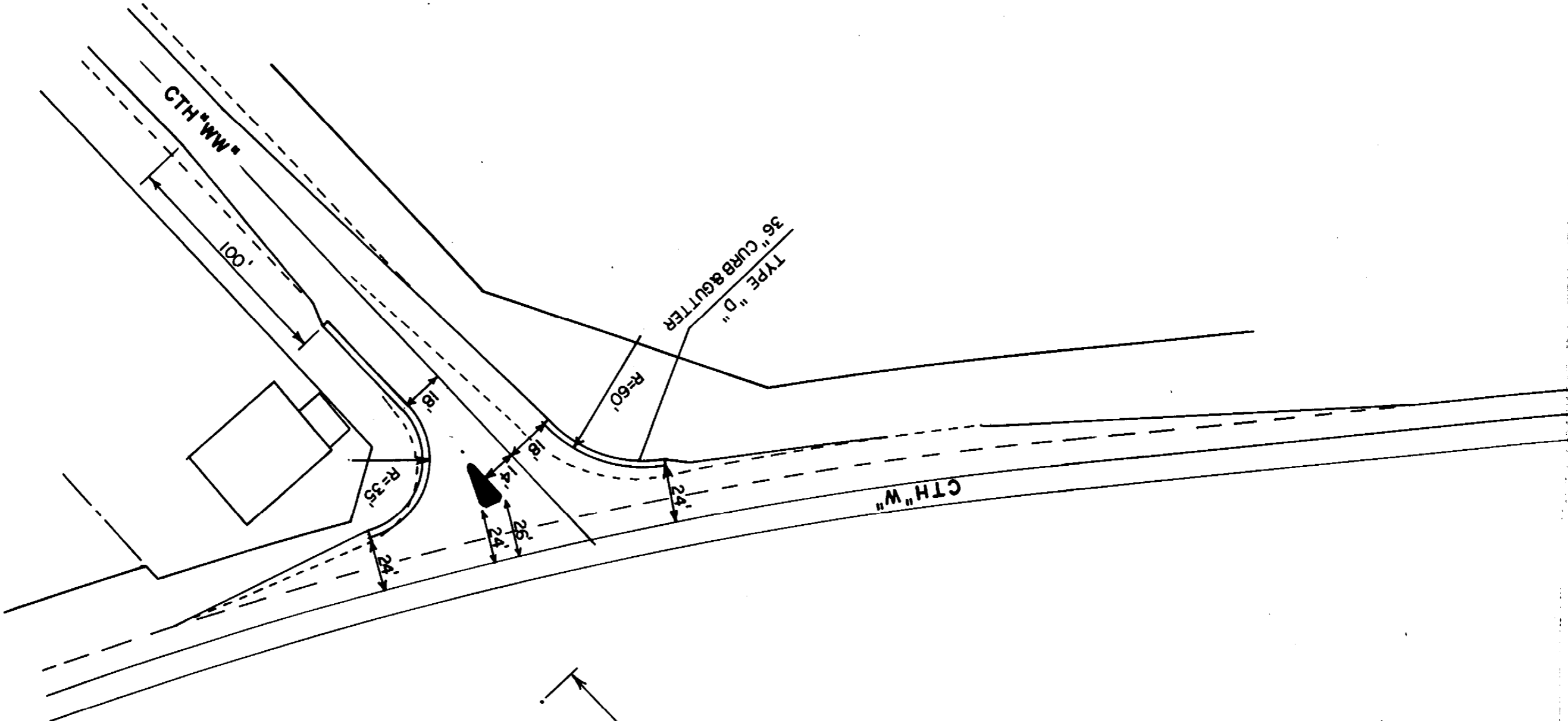
TYPICAL 34' SECTION



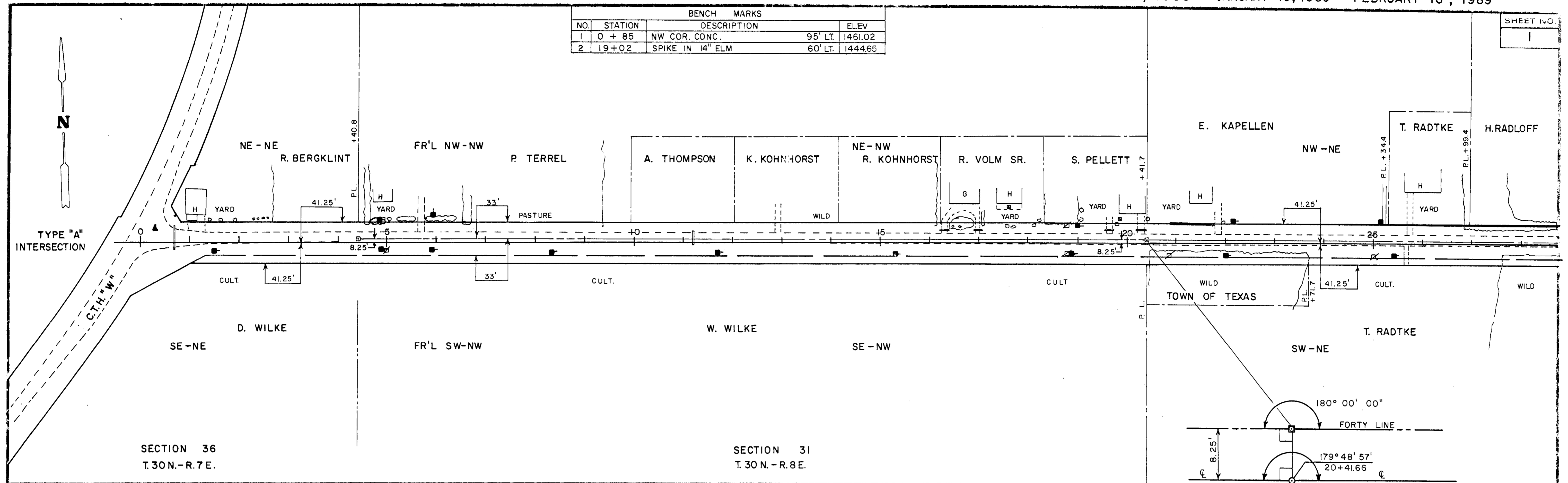
LEGEND

NEW RIGHT-OF-WAY	—————
PRESENT RIGHT-OF-WAY	———
PROPERTY LINE	- - - - - PL
WELL	⊠
TELEPHONE CABLE	— T — T —
POWER CABLE	— P — P —
GAS LINE	— G — G —
POWER POLE	⊠
TELEPHONE POLE	⊠
TELEPHONE PEDESTAL	⊠
GUY POLE	⊠
TRANSMISSION TOWER & LINE	⊠
FENCE	— x — x —
TRAVELED WAY	- - - - -

SCALE = 1" = 100'  
NET LENGTH OF CENTERLINE = 3.87 MI.

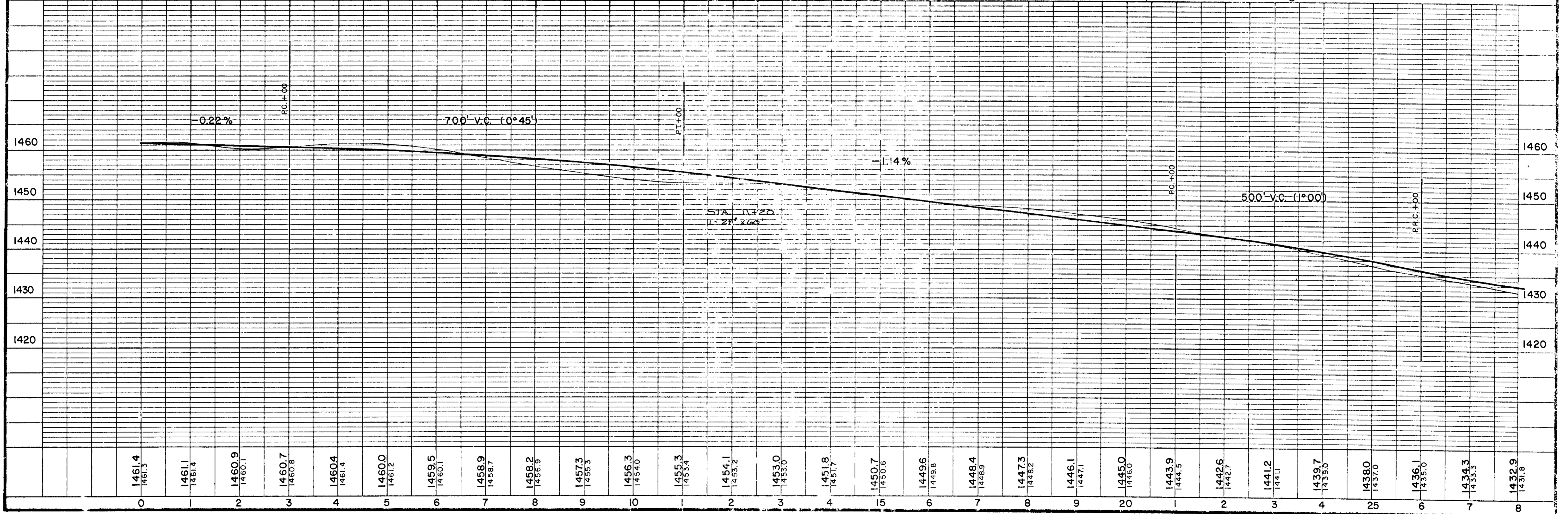
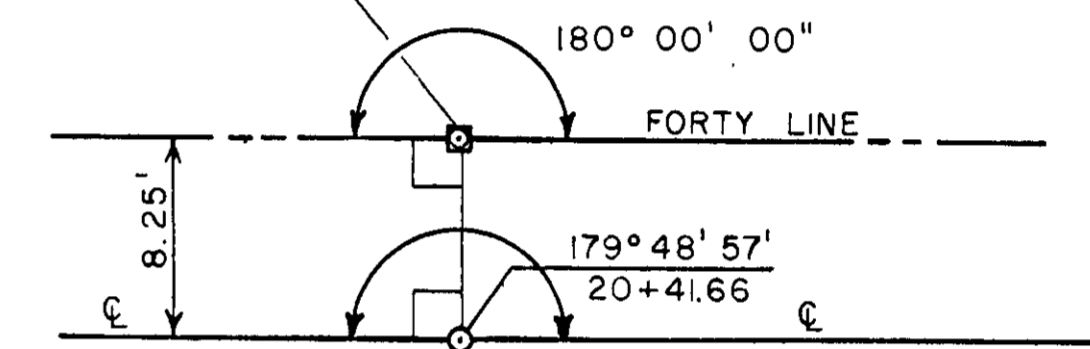


BENCH MARKS			
NO.	STATION	DESCRIPTION	ELEV.
1	0 + 85	NW COR. CONC.	95' LT. 1461.02
2	19 + 02	SPIKE IN 14" ELM	60' LT. 1444.65

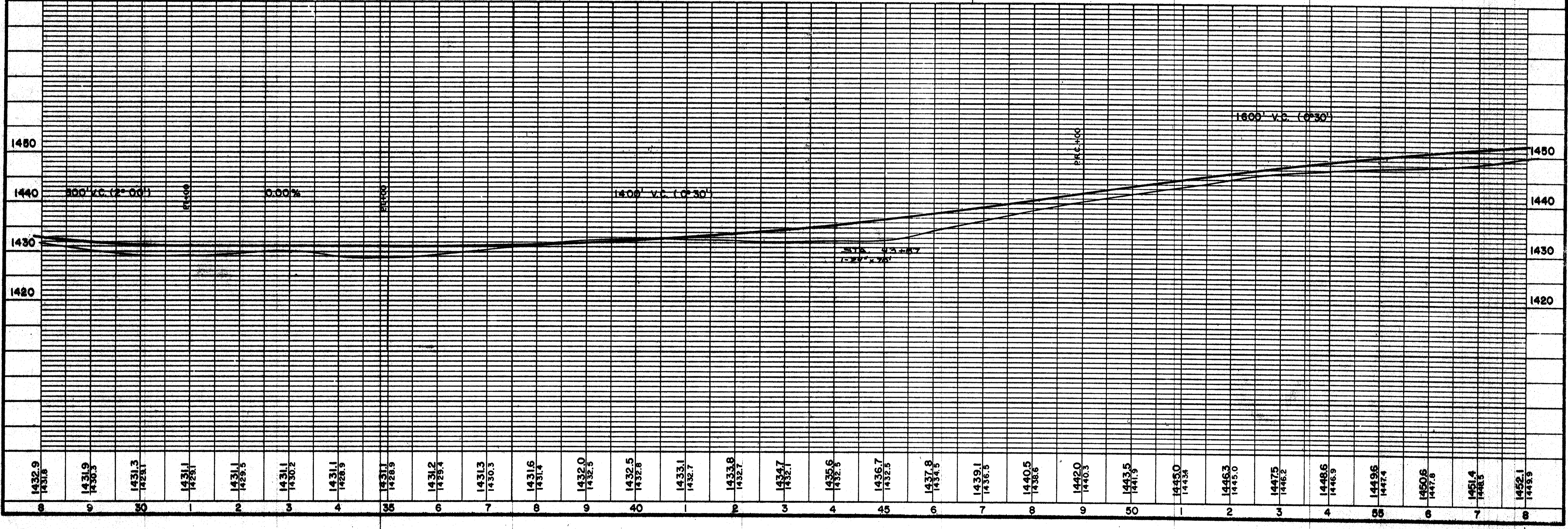
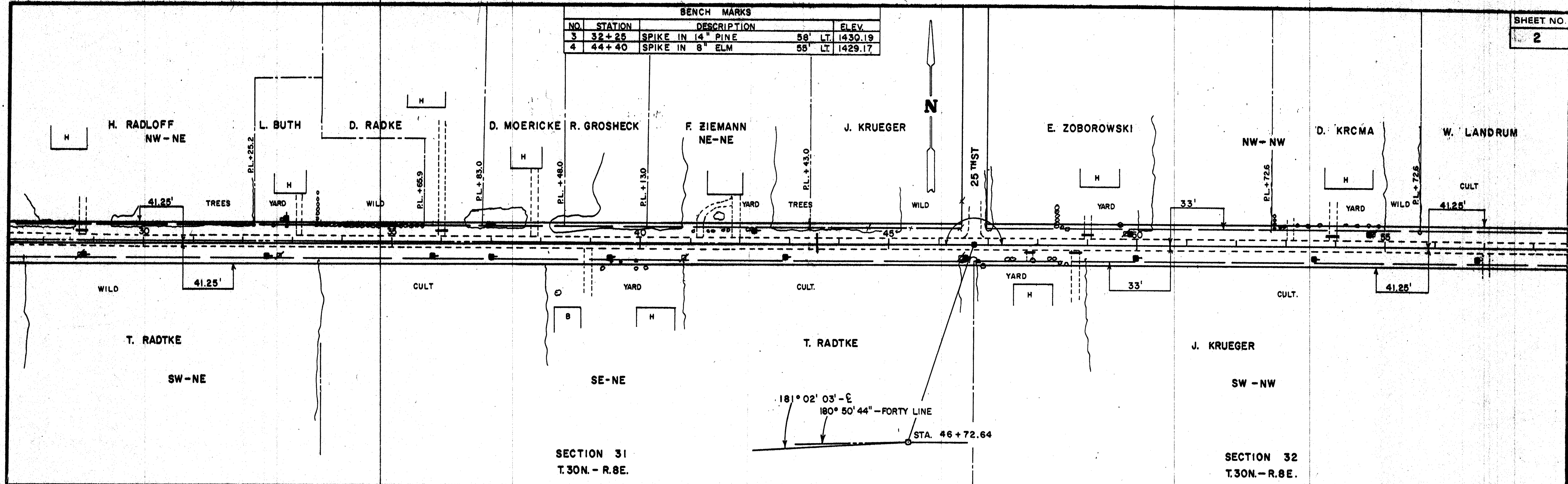


SECTION 36  
T. 30 N. - R. 7 E.

SECTION 31  
T. 30 N. - R. 8 E.

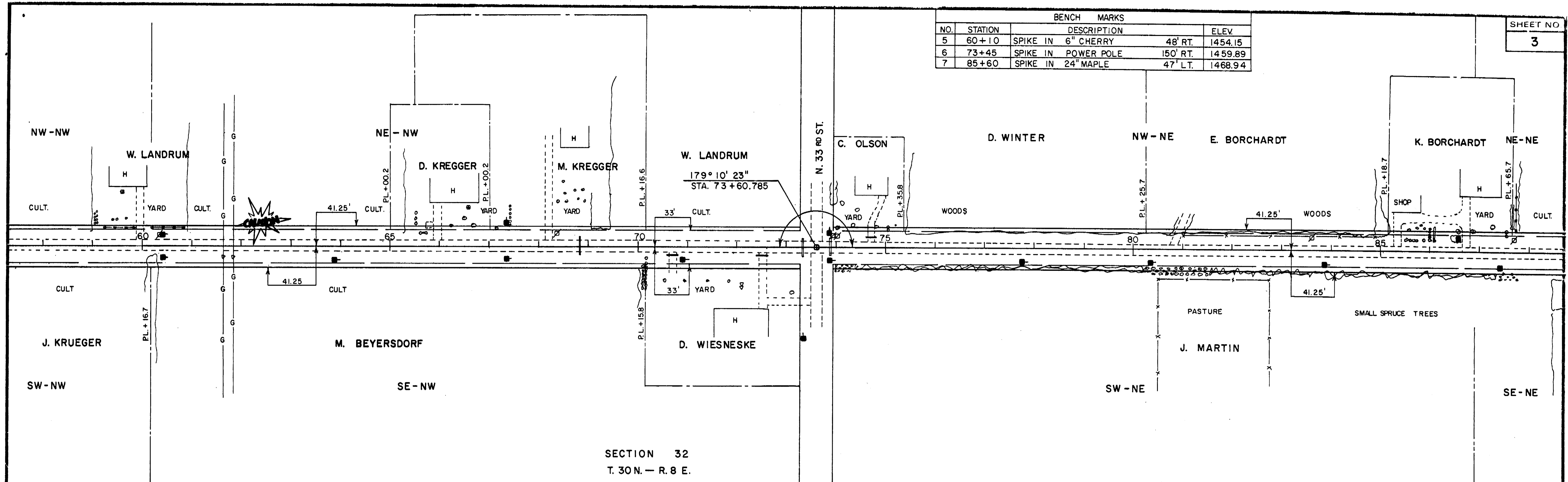


BENCH MARKS			
NO.	STATION	DESCRIPTION	ELEV.
3	32+25	SPIKE IN 14" PINE	58' LT. 1430.19
4	44+40	SPIKE IN 8" ELM	58' LT. 1429.17

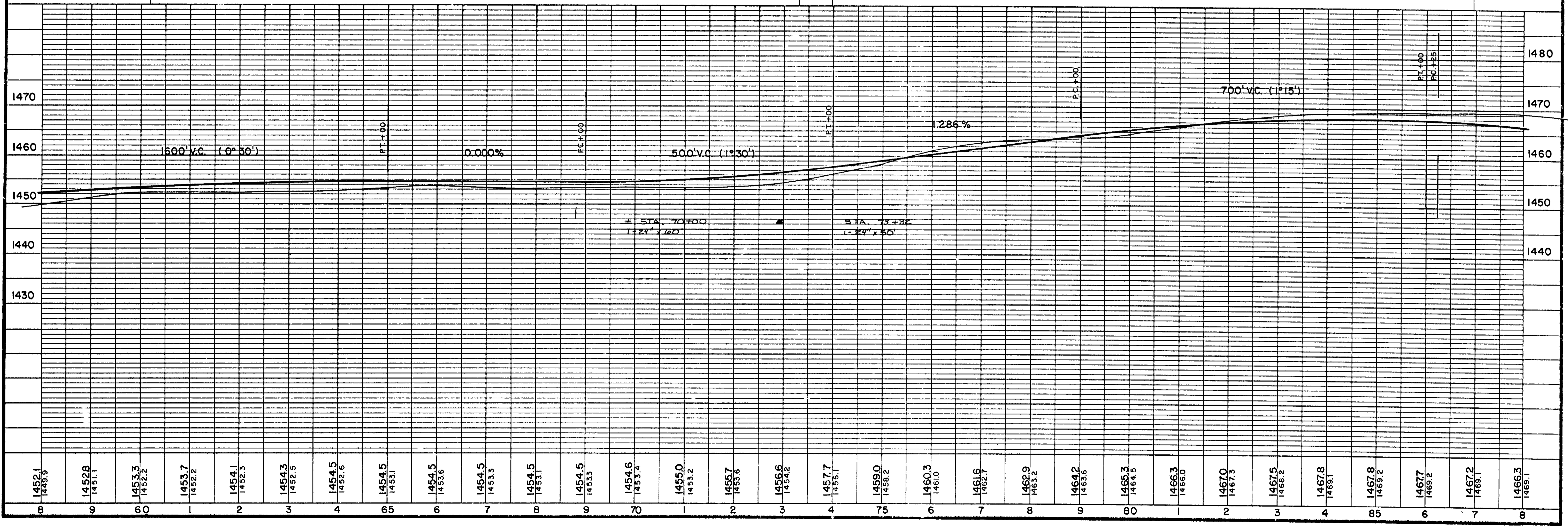


1432.9	1431.8	1431.9	1430.3	1431.3	1428.1	1431.1	1428.1	1431.1	1429.5	1431.1	1430.2	1431.1	1428.9	1431.1	1428.9	1431.2	1429.4	1431.3	1430.3	1431.6	1431.4	1432.0	1432.5	1432.5	1432.8	1433.1	1432.7	1433.8	1432.7	1434.7	1432.7	1435.6	1432.5	1436.7	1432.5	1437.8	1434.5	1439.1	1436.3	1440.5	1438.6	1442.0	1440.3	1443.5	1441.9	1445.0	1443.4	1446.3	1445.0	1447.5	1446.2	1448.6	1446.9	1449.6	1447.4	1450.6	1447.8	1451.4	1448.5	1452.1	1449.9
--------	--------	--------	--------	--------	--------	--------	--------	--------	--------	--------	--------	--------	--------	--------	--------	--------	--------	--------	--------	--------	--------	--------	--------	--------	--------	--------	--------	--------	--------	--------	--------	--------	--------	--------	--------	--------	--------	--------	--------	--------	--------	--------	--------	--------	--------	--------	--------	--------	--------	--------	--------	--------	--------	--------	--------	--------	--------	--------	--------	--------	--------

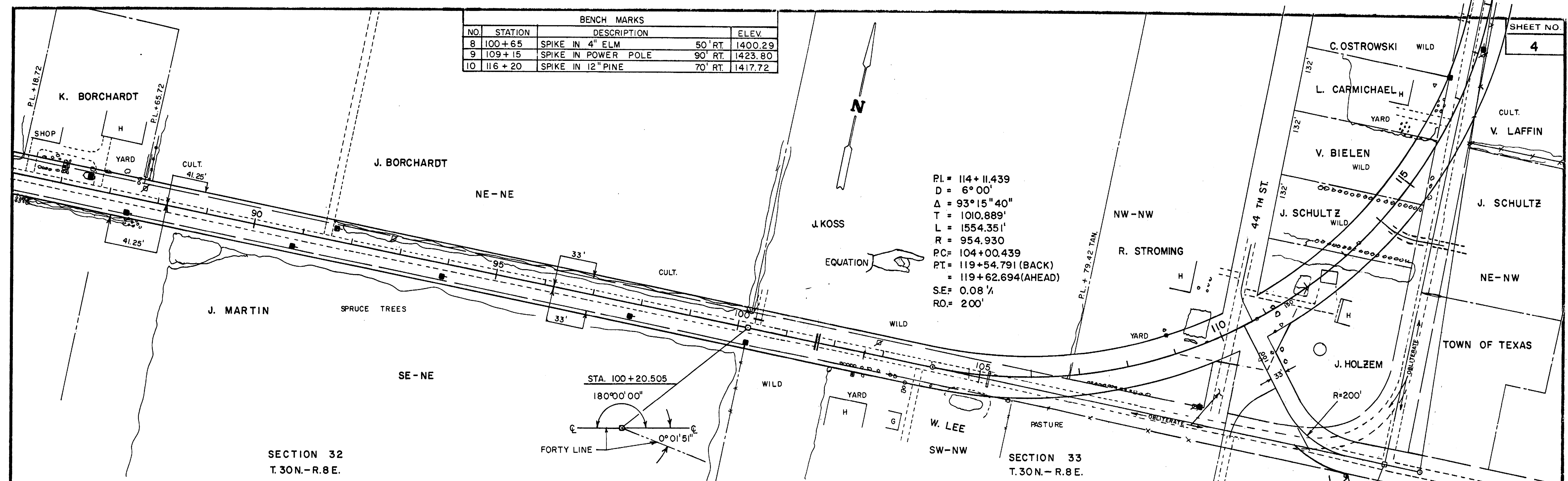
BENCH MARKS			
NO.	STATION	DESCRIPTION	ELEV.
5	60+10	SPIKE IN 6" CHERRY	48' RT. 1454.15
6	73+45	SPIKE IN POWER POLE	150' RT. 1459.89
7	85+60	SPIKE IN 24" MAPLE	47' LT. 1468.94



SECTION 32  
T. 30 N. - R. 8 E.

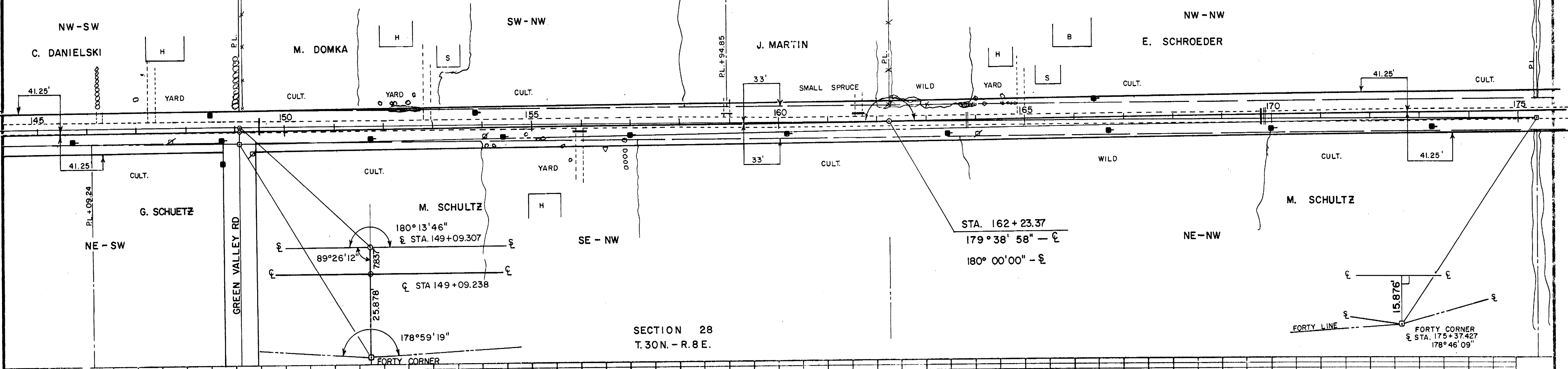
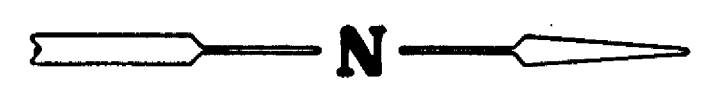


BENCH MARKS			
NO.	STATION	DESCRIPTION	ELEV.
8	100+65	SPIKE IN 4" ELM	50' RT. 1400.29
9	109+15	SPIKE IN POWER POLE	90' RT. 1423.80
10	116+20	SPIKE IN 12" PINE	70' RT. 1417.72

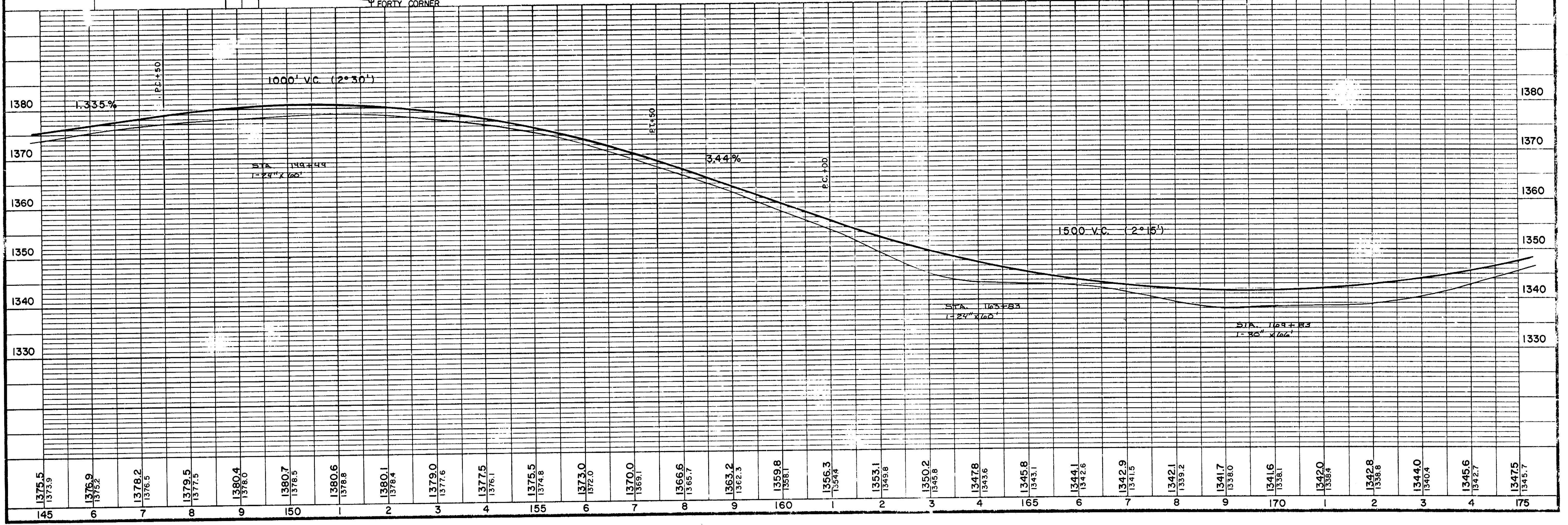




BENCH MARKS				
NO.	STATION	DESCRIPTION	ELEV.	
13	148+75	SPIKE IN POWER POLE	75' RT.	1379.81
14	162+20	SPIKE IN 6" CHERRY	42' LT.	1353.50
15	175+35	SPIKE IN 6" ELM	95' RT.	1342.28



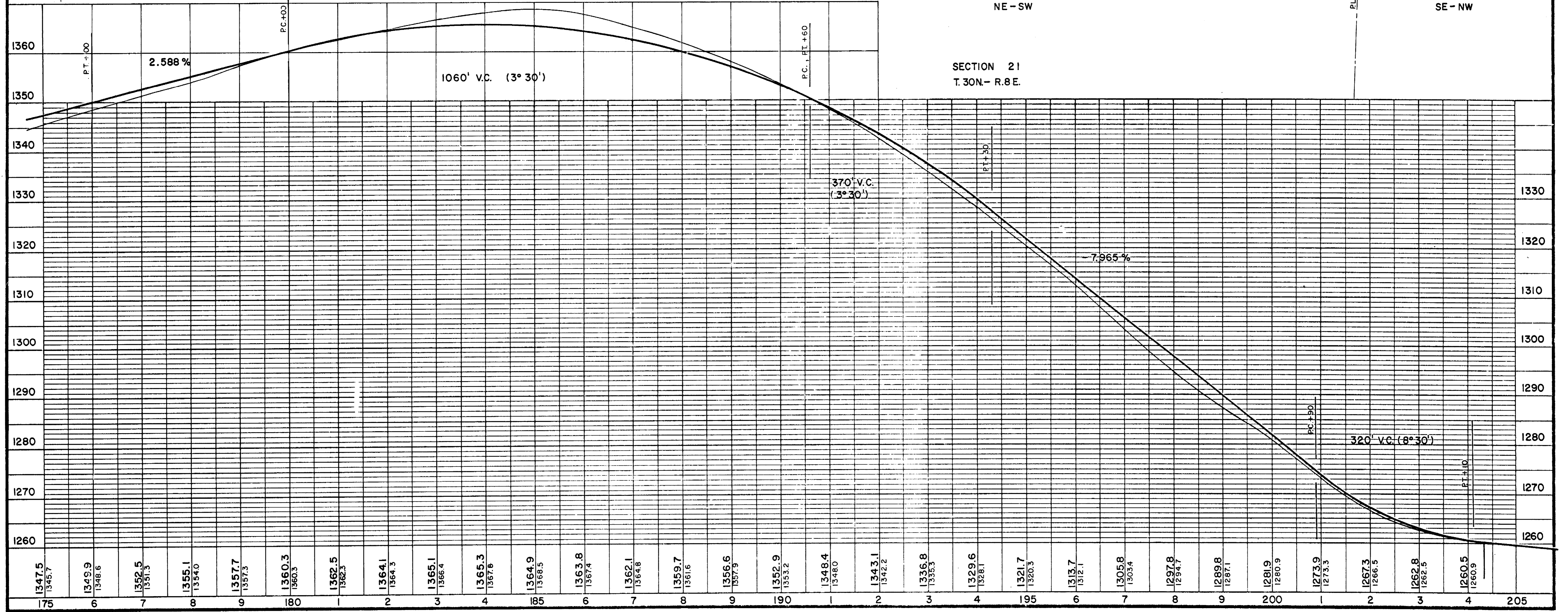
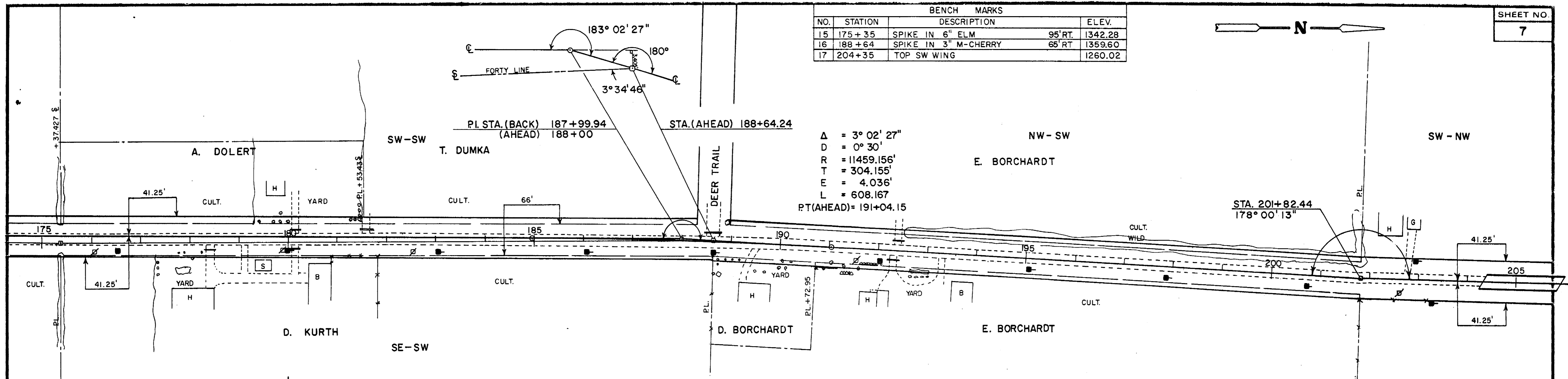
SECTION 28  
T. 30N. - R. 8E.



BENCH MARKS			
NO.	STATION	DESCRIPTION	ELEV.
15	175+35	SPIKE IN 6" ELM	95' RT. 1342.28
16	188+64	SPIKE IN 3" M-CHERRY	65' RT. 1359.60
17	204+35	TOP SW WING	1260.02



$\Delta = 3^{\circ} 02' 27''$   
 $D = 0^{\circ} 30'$   
 $R = 11459.156'$   
 $T = 304.155'$   
 $E = 4.036'$   
 $L = 608.167'$   
 PT(AHEAD) = 191+04.15



SECTION 21  
T. 30N.-R.8E.

SW-NW  
TRAPPE RIVER GOLF COURSE

CLH M # 118326  
CLH M NW-NW

