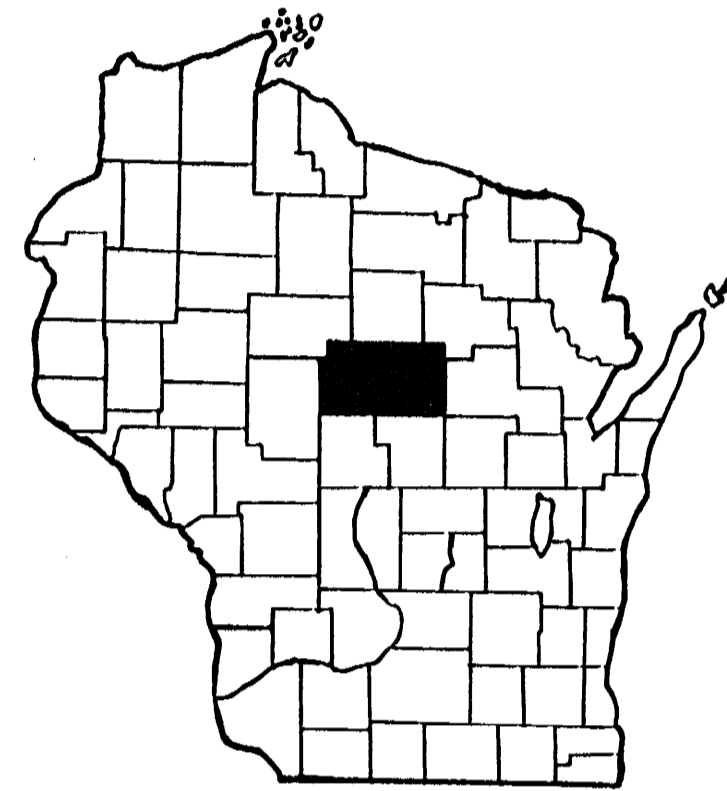
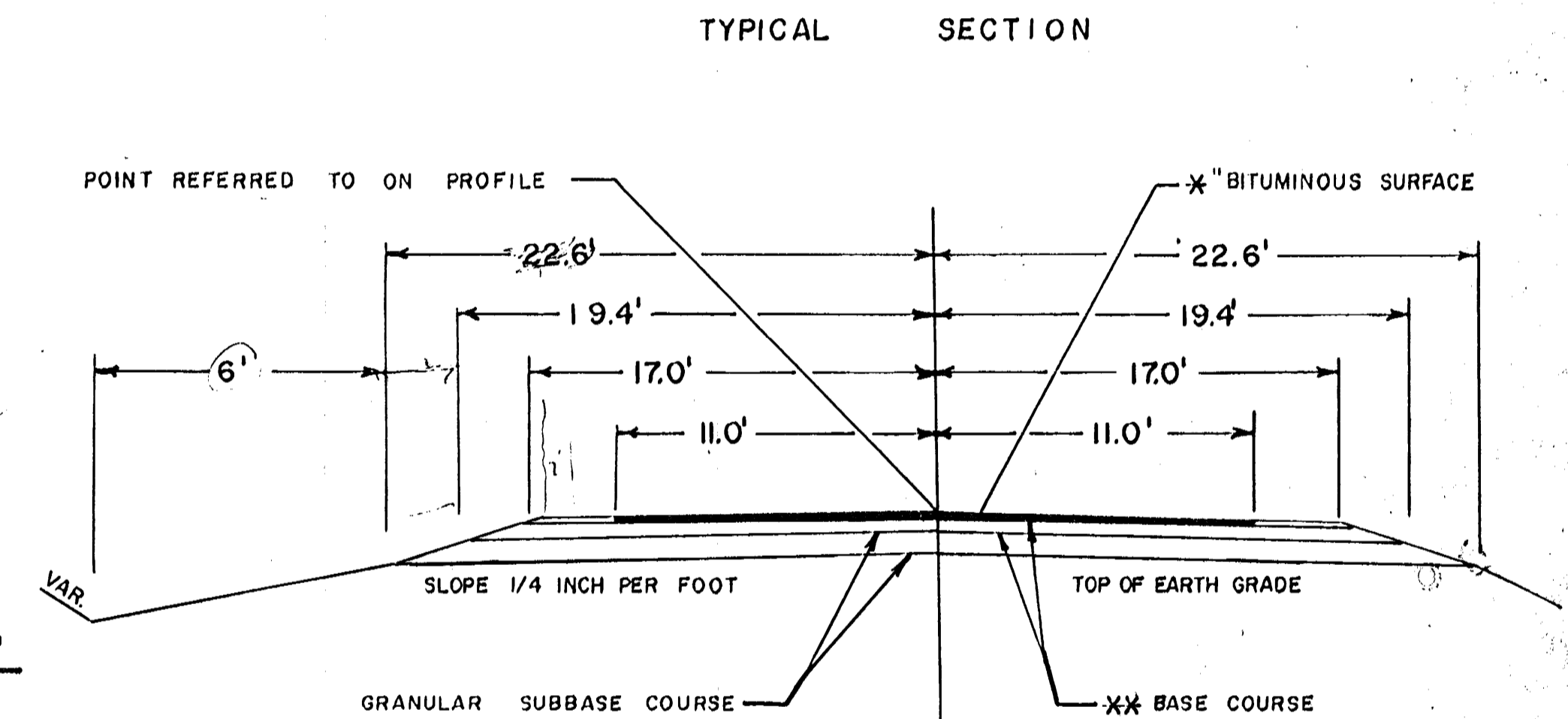
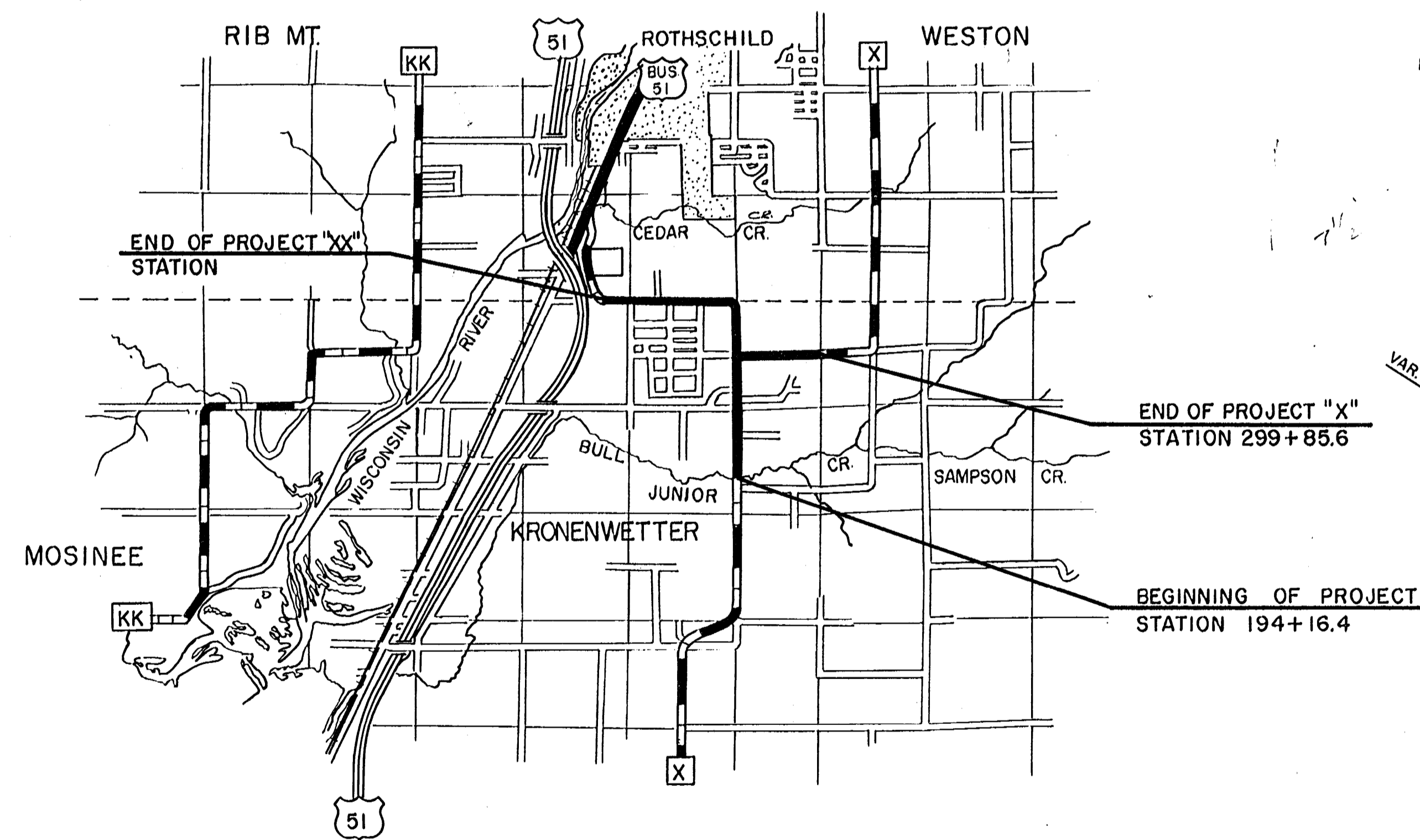


MARATHON COUNTY HIGHWAY DEPARTMENT

PLAN AND PROFILE OF PROPOSED BULL JUNIOR CR. — NORTH C.T.H. "X" & "XX"



	BERN	WALDEY	HAMBURG	BERLIN	MANNE	TEXAS	HEWITT	HARRISON
HOLTON	JOHNSON	RIEBROCK	RIB FALLS	STETTIN	WALSAU	EASTON	FLOWER	
HULL	FRANKFORT	WIDN	CASSEL	MARATHON	RIB MT.	WESTON	RINGLE	NORRIS
BRIGHTON	SAU PLEAS	CLEVELAND	EMMET	MOSIER	KRONENWETTER	REID	ELDERON	
SPENCER	MCALLAN	DAY	GREEN VALLEY	BERGEN	KNOWLTON	QUENTNER	BEVENT	FRANZEN

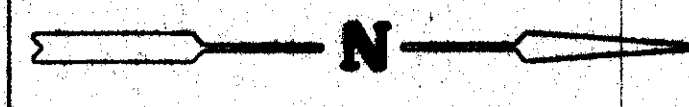


*	= 3"	STA. 194+16.4 - STA. 310+25
	4"	STA. 310+25 - END
**	= 6"	STA. 194+16.4 - STA. 310+25
	8"	STA. 310+25 - END

LEGEND

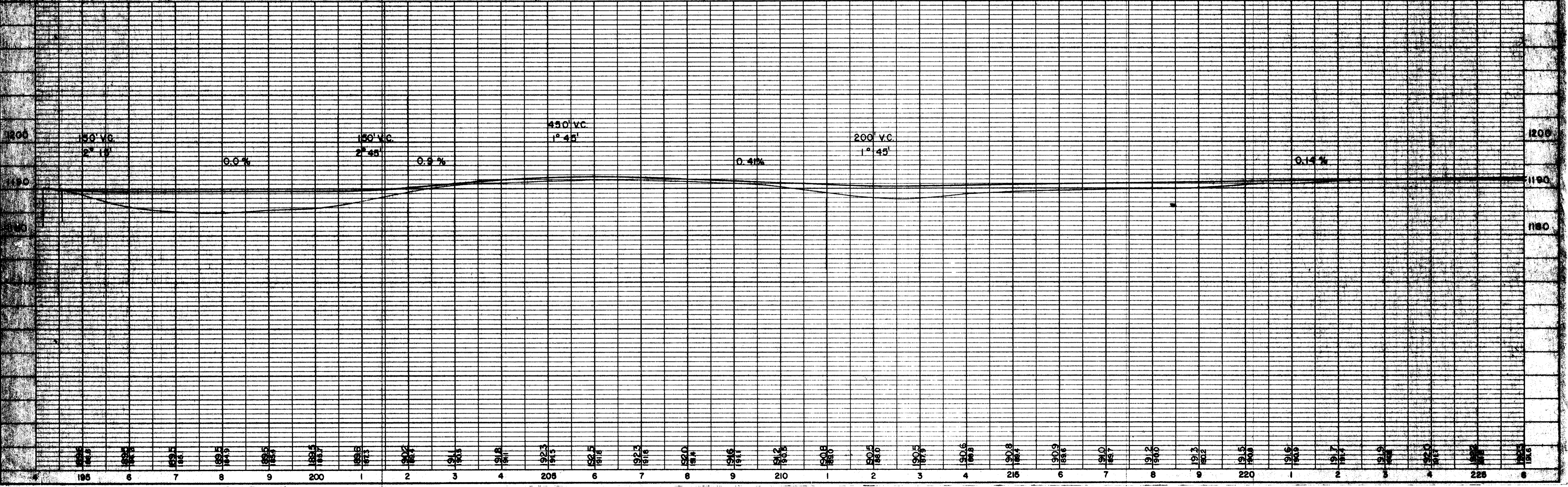
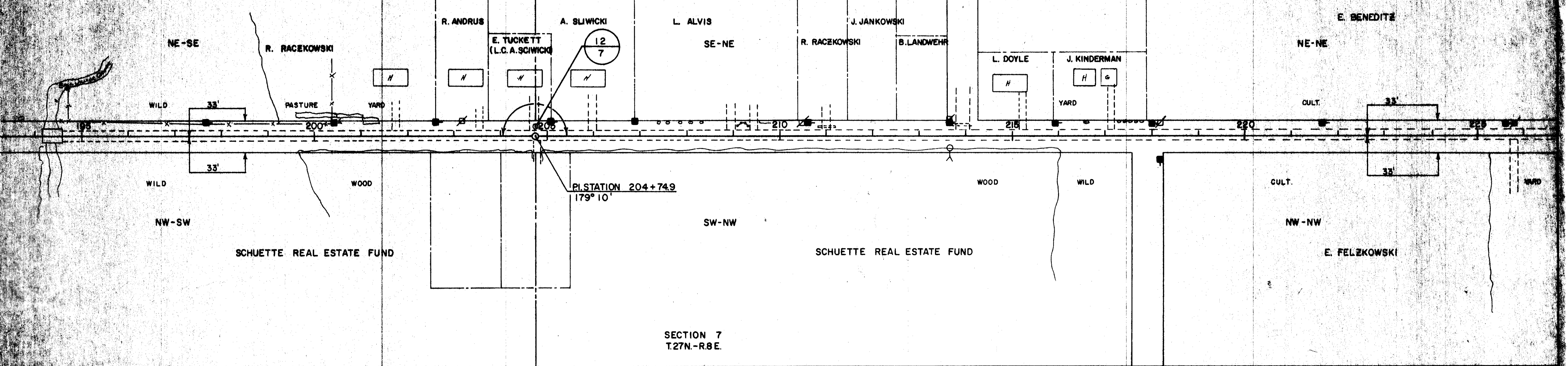
- NEW RIGHT-OF-WAY
- PRESENT RIGHT-OF-WAY
- PROPERTY LINE
- WELL
- TELEPHONE CABLE
- POWER CABLE
- GAS LINE
- POWER POLE
- TELEPHONE POLE
- TELEPHONE PEDESTAL
- GUY POLE
- TRANSMISSION TOWER & LINE
- FENCE
- TRAVELED WAY

BENCH MARKS			
NO.	STATION	DESCRIPTION	ELEV.
1	194+16	BLUE "X" SW CORNER BRIDGE	1189.99
2	218+16	SPIKE IN POWER POLE	1190.81



SECTION 12
T.27N.-R.7E.

SECTION 7
T.27N.-R.8E.



BENCH MARKS			
NO.	STATION	DESCRIPTION	ELEV.
3	232+90	SPIKE IN POWER POLE	35' RT. 1193.50
4	248+48	SPIKE IN 8" PINE	45' LT. 1196.64
5	287+80	SPIKE IN 30" OAK	105' LT. 1197.92

