

PHASE II DRAINAGE IMPROVEMENTS

VILLAGE OF KRONENWETTER MARATHON COUNTY, WISCONSIN



PROJECT LOCATION

SHEET INDEX

G - GENERAL SHEETS

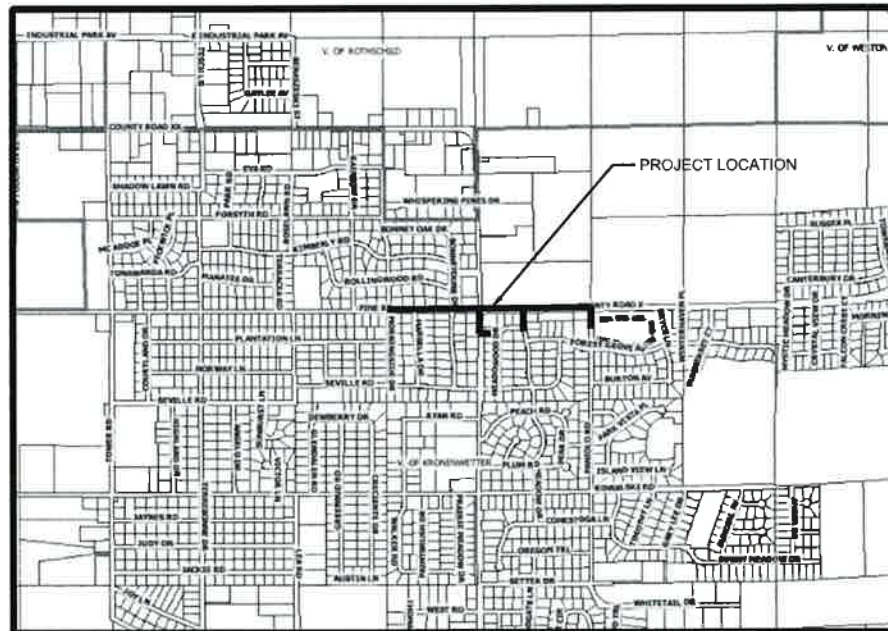
- G 1 TITLE SHEET
- G 2 - 3 STORM SEWER DETAILS
- G 4 TYPICAL SECTION DETAILS
- G 5 - 7 TRAFFIC CONTROL DETAILS
- G 8 EROSION CONTROL DETAILS
- G 9 OUTLET CONTROL STRUCTURE DETIALS

PP - PLAN & PROFILE SHEETS

- PP 1 - 5 PINE RD. PLAN & PROFILE SHEETS
- PP 6 PANIOLA RD. PLAN & PROFILE SHEET
- PP 7 POND CONNECTION PLAN & PROFILE SHEET
- PP 8 PERMANENT EASEMENT PLAN & PROFILE SHEET
- PP 9 CTH 'X' PLAN & PROFILE SHEET
- PP 10 MEADOW DR. PLAN & PROFILE SHEET

CS - CROSS SECTION SHEETS

- CS 1 - 21 PINE RD. PLAN & PROFILE SHEETS
- CS 22 - 24 PANIOLA RD. PLAN & PROFILE SHEET
- CS 25 - 26 PERMANENT EASEMENT PLAN & PROFILE SHEET
- CS 27 - 29 CTH 'X' PLAN & PROFILE SHEET
- CS 30 - 32 MEADOW DR. PLAN & PROFILE SHEET



PROJECT LOCATION

LEGEND

- EXISTING WATER MAIN
- EXISTING GATE VALVE & HYDRANT
- WATER SERVICE & CURB STOP
- PROPOSED WATERMAIN, VALVE, & HYDRANT
- PROPOSED WATER SERVICE & CURB STOP
- EXISTING SANITARY SEWER & MANHOLE
- EXISTING FORCEMAIN
- EXISTING STORM SEWER & INLET
- PROPOSED STORM SEWER & INLET
- PROPOSED MANHOLE & SEWER MAIN
- BURIED ELECTRIC
- BURIED GAS & VALVE
- BURIED CABLE TELEVISION
- BURIED TELEPHONE
- BURIED FIBER OPTICS
- RAILROAD TRACKS
- EXISTING CURB & GUTTER
- PROPOSED CURB & GUTTER
- EXISTING SIDEWALK
- PROPOSED SIDEWALK
- EXISTING CULVERT PIPE
- PROPOSED CULVERT PIPE
- FENCE LINE
- DRAINAGE ARROW
- SILT FENCE
- RIGHT-OF-WAY
- BASELINE
- PROPERTY LINE
- DITCH/SWALE
- TREE LINE
- PROPOSED UNDER DRAIN
- IRON PIPE
- IRON ROD
- CONTROL POINT
- POWER POLE & GUY
- SOIL BORING
- LIGHT POLE
- PEDESTAL
- STREET SIGN
- MAILBOX
- FLAGPOLE
- EROSION BALES
- TREE - DECIDUOUS
- TREE - CONIFEROUS
- TREE TO BE REMOVED

UTILITIES

- GAS:** WISCONSIN PUBLIC SERVICES
ATTN: MIKE BOSI, PE
1700 SHERMAN ST.
WAUSAU, WI 54403
OFFICE: 715-848-7471
CELL: (715) 803-8009
MBOSI@WISCONSINPUBLICSERVICE.COM
- ELECTRIC:** WISCONSIN PUBLIC SERVICES
ATTN: CLAY VIRCKS
1700 SHERMAN ST.
WAUSAU, WI 54403
OFFICE: 715-848-7317
CELL: (715) 573-7806
CHVIRCKS@WISCONSINPUBLICSERVICE.COM
- TELEPHONE:** FRONTIER
ATTN: CAL KLADE
521 4th STREET
WAUSAU, WI 54403
OFFICE: 715-847-1525
CELL: 715-573-2110
CALVIN.KLADE@FTR.COM
- SEWER & WATER:** VILLAGE OF KRONENWETTER
ATTN: DUANE GAU
1582 KRONENWETTER DRIVE
KRONENWETTER, WI 54455
TELEPHONE: 715-893-4200
DGAU@KRONENWETTER.COM
- CATV:** CHARTER COMMUNICATIONS
ATTN: JAMEY OLSEN
853 MCINTOSH ST.
WAUSAU, WI 54403
OFFICE: 715-236-5005
CELL: 715-370-7418 (715) 302-1348

RECORD DRAWINGS

REVISED TO CONFORM TO
CONSTRUCTION RECORDS
PROVIDED BY CONTRACTOR



BY: GMG
DATE: 11/13
CRS NO. _____

RECORD DRAWING
The Engineer will not be responsible for any errors or omissions
incorporated into this document as a result of information
compiled and furnished by others.



LOCATION MAP

NOT TO SCALE

| | | | | |
|----------------------------------|-----------------|---------|-------------|-----------------|
| PROJECT NO.: 0899006 | SCALE: AS SHOWN | REVISED | DATE: 11/12 | RECORD DRAWINGS |
| PROJECT DATE: 7/26/2011 | DRAWN BY: AP | | | |
| CHECKED BY: MD | | | | |
| PLLOT DATE: 1/16/2014 3:52:17 PM | | | | |



TRANSPORTATION • MUNICIPAL
DEVELOPMENT • ENVIRONMENTAL
146 North Central Ave. Marshfield, WI 54449
715-384-2133 1-877-204-0572 Fax: 715-384-9787
Web Address: www.msa-ps.com

TITLE SHEET

PHASE II DRAINAGE IMPROVEMENTS
VILLAGE OF KRONENWETTER
MARATHON COUNTY, WI

FILE NO.
8999006
SHEET
G 1

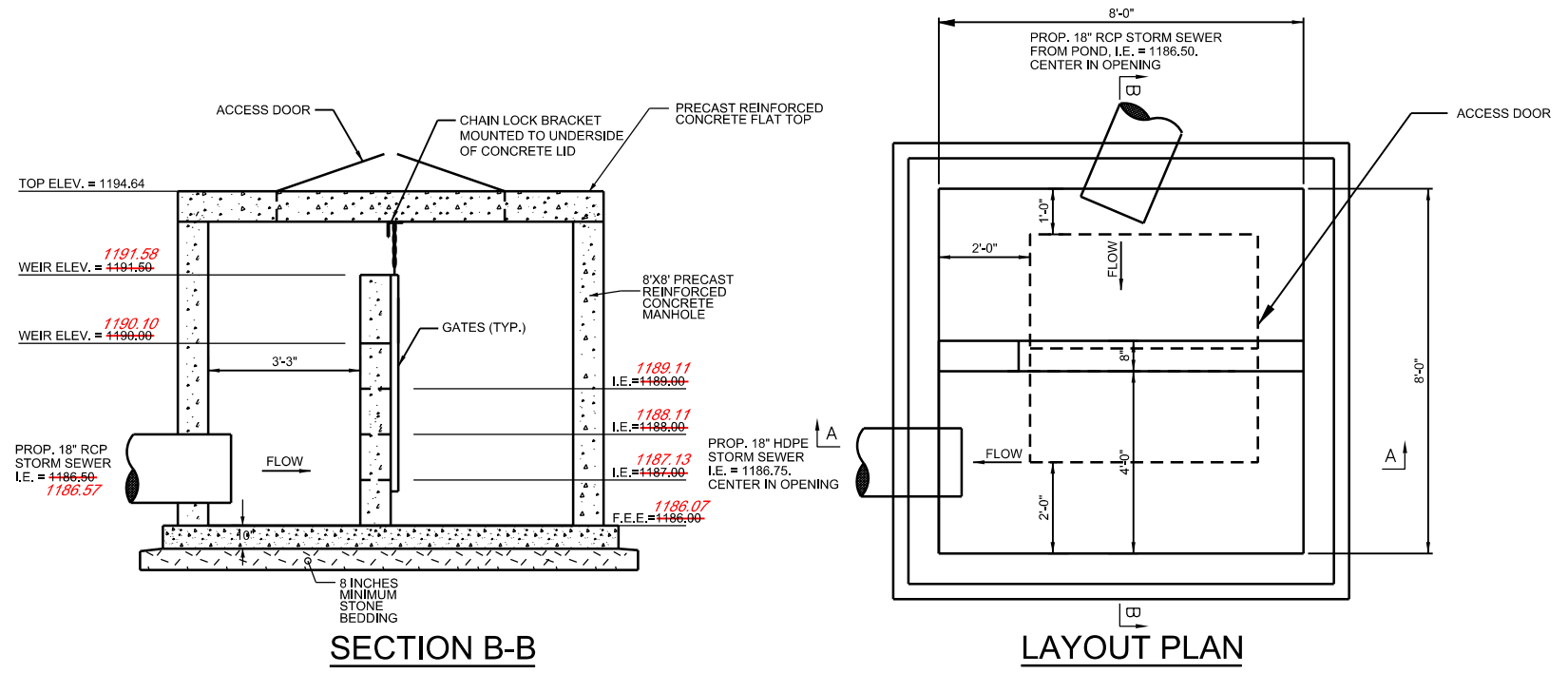


Toll Free (800) 242-8511
Milwaukee Area (414) 259-1181
Hearing Impaired TDD (800) 542-2289
www.DiggersHotline.com

NOTE:
UTILITY LOCATIONS SHOWN ON PLANS ARE APPROXIMATE AND CONTRACTOR
SHALL HAVE APPROPRIATE UTILITY MARK EXACT LOCATIONS PRIOR TO
CONSTRUCTION.

RECORD DRAWING
The Engineer will not be responsible for any errors or omissions incorporated into this document as a result of information compiled and furnished by others.

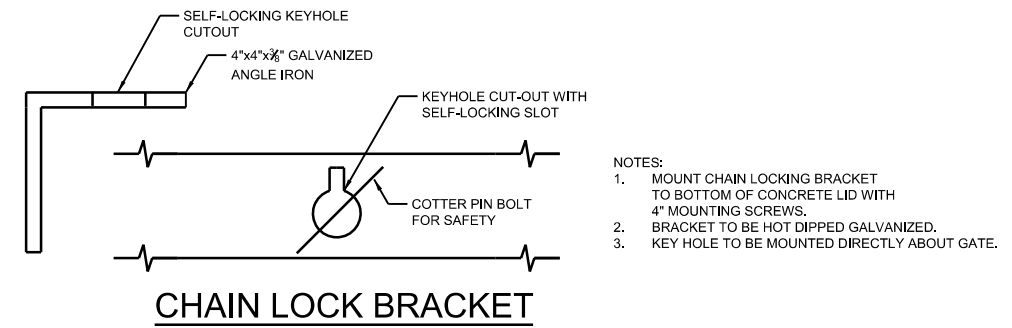
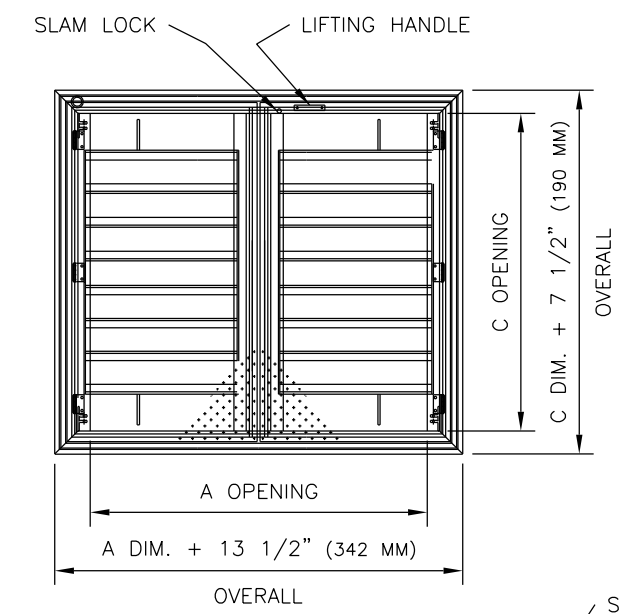
| STANDARD SIZES | | | | |
|----------------|-----------|--------------------|--------------------|---------------------|
| QTY. | MODEL NO. | A DIM. INCHES (MM) | C DIM. INCHES (MM) | UNIT WT. LBS. (KG.) |
| 1 | H2W6060 | 60 (1524) | 60 (1524) | 373 (169) |



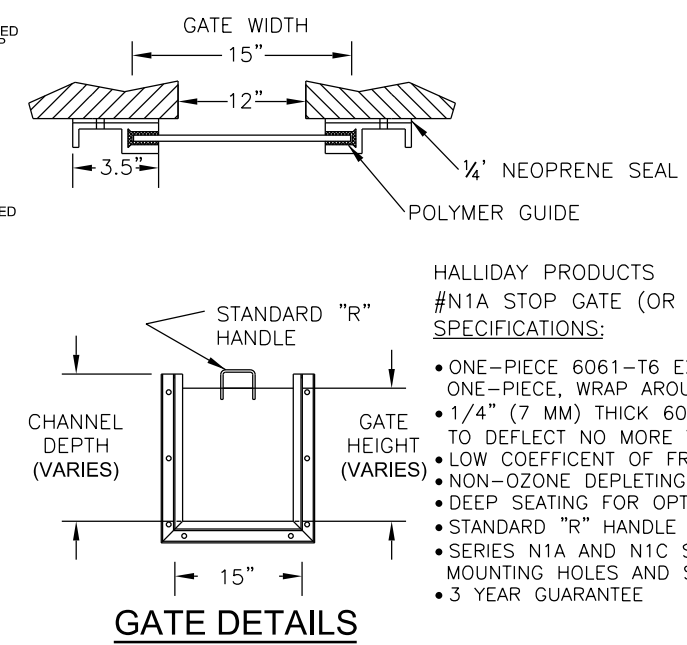
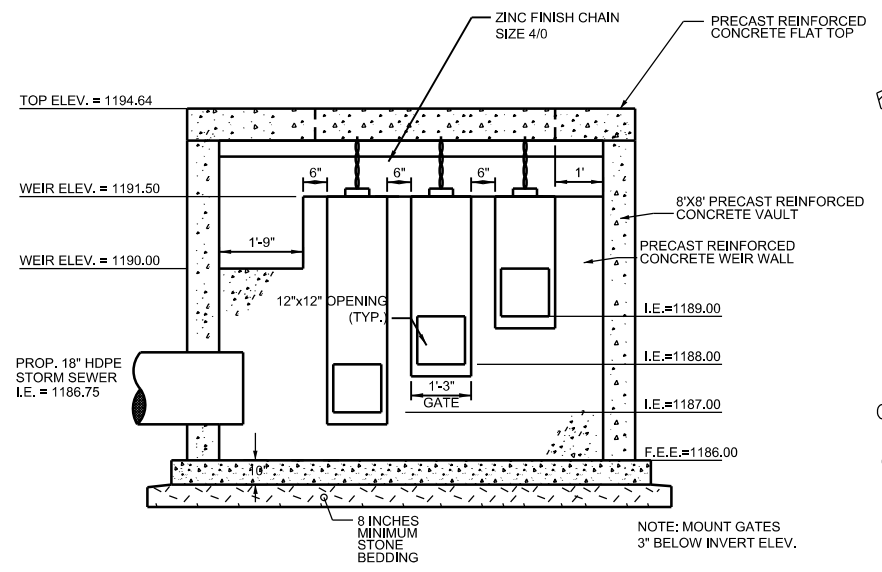
HALLIDAY PRODUCTS
#H2W6060 ACCESS DOOR (OR APPROVED EQUAL)
SPECIFICATIONS:

- AUTO-LOCK T-316 STAINLESS STEEL HOLD OPEN ARM WITH RELEASE HANDLE
- T-316 STAINLESS STEEL HINGES AND ATTACHING HARDWARE
- T-316 STAINLESS STEEL SLAM LOCK WITH REMOVABLE KEY
- STAINLESS STEEL COMPRESSION SPRING ASSIST
- DOUBLE LEAF CONSTRUCTION
- H2O LOAD RATING (SEE NOTES)
- EXTRUDED ALUMINUM CHANNEL FRAME
- RECESSED LIFTING HANDLE
- LIFETIME GUARANTEE

NOTES:
 1) SUITABLE FOR USE IN OFF STREET LOCATION WHERE NOT SUBJECTED TO HIGH DENSITY TRAFFIC.
 2) PROVIDE A FULL BED OF CLASS "A" CONCRETE UNDER FRAME AND SUPPORT ANGLES.

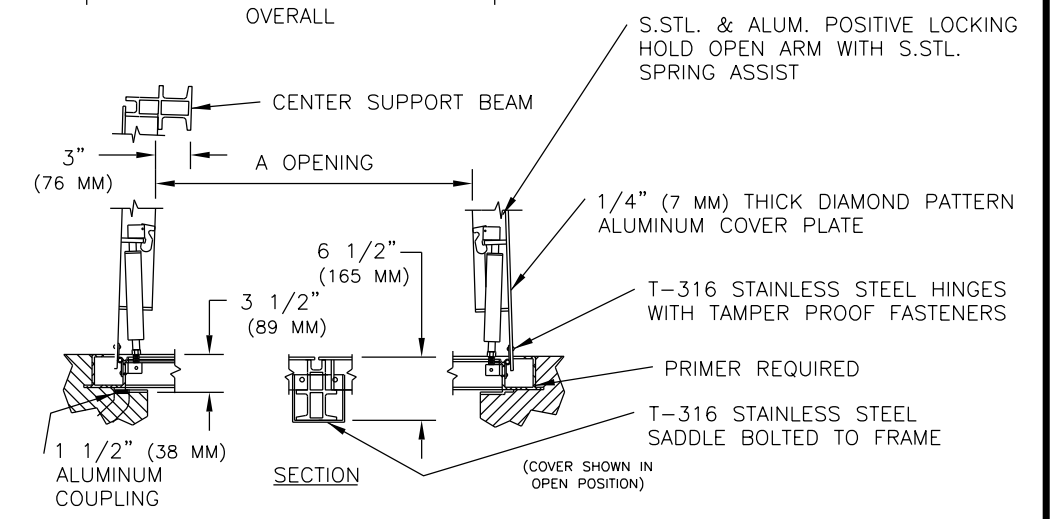


NOTES:
 1. MOUNT CHAIN LOCKING BRACKET TO BOTTOM OF CONCRETE LID WITH 4\"/>



HALLIDAY PRODUCTS
#N1A STOP GATE (OR APPROVED EQUAL)
SPECIFICATIONS:

- ONE-PIECE 6061-T6 EXTRUDED ALUMINUM FRAME ONE-PIECE, WRAP AROUND POLYMER GUIDE
- 1/4\"/>



SECTION A-A
PRECAST REINFORCED OUTLET CONTROL STRUCTURE
SCALE: NONE

ACCESS DOOR DETAILS
SCALE: NONE

| | | | | | |
|---|-----------------|-----|------|----------|----|
| PROJECT NO.: 0909006 | SCALE: AS SHOWN | NO. | DATE | REVISION | BY |
| PROJECT DATE: 04/2015 | DRAWN BY: AP | | | | |
| CHECKED BY: ND | | | | | |
| PLOT DATE: Structure Details.dwg 1/16/2014 3:52:18 PM gsm | | | | | |

MSA PROFESSIONAL SERVICES
 TRANSPORTATION • MUNICIPAL DEVELOPMENT • ENVIRONMENTAL
 148 North Central Ave., Marshfield, WI 54449
 715-384-2133 1-877-204-0572 Fax: 715-384-9787
 Web Address: www.msa-ps.com
 © MSA Professional Services, Inc.

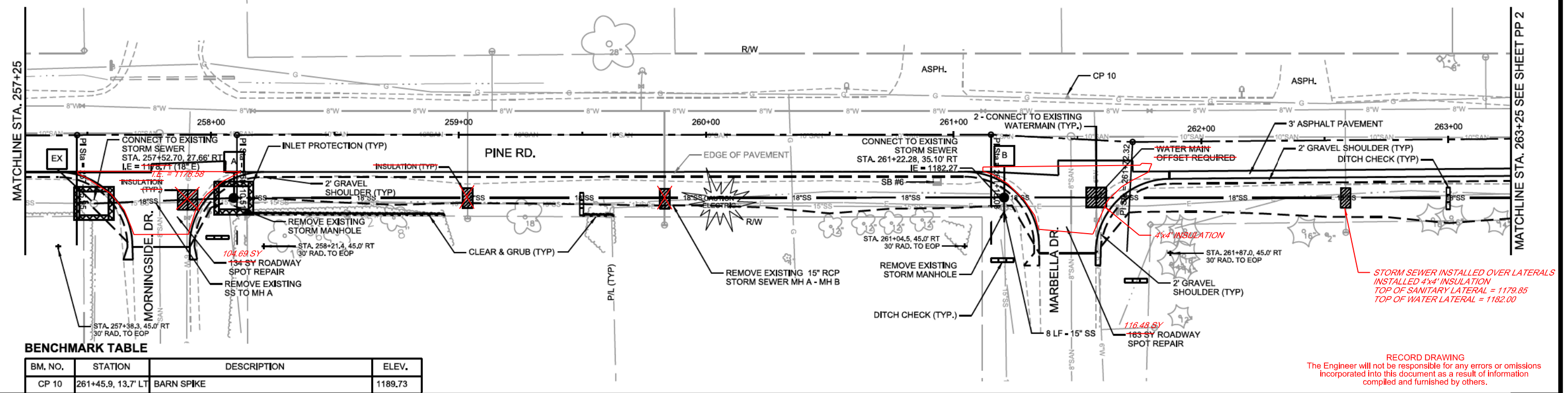
OUTLET CONTROL STRUCTURE DETAILS

PHASE II DRAINAGE IMPROVEMENTS
 VILLAGE OF KRONENWETTER
 MARATHON COUNTY, WI

| |
|---------------------|
| FILE NO. 8999006 |
| SHEET G 9 |



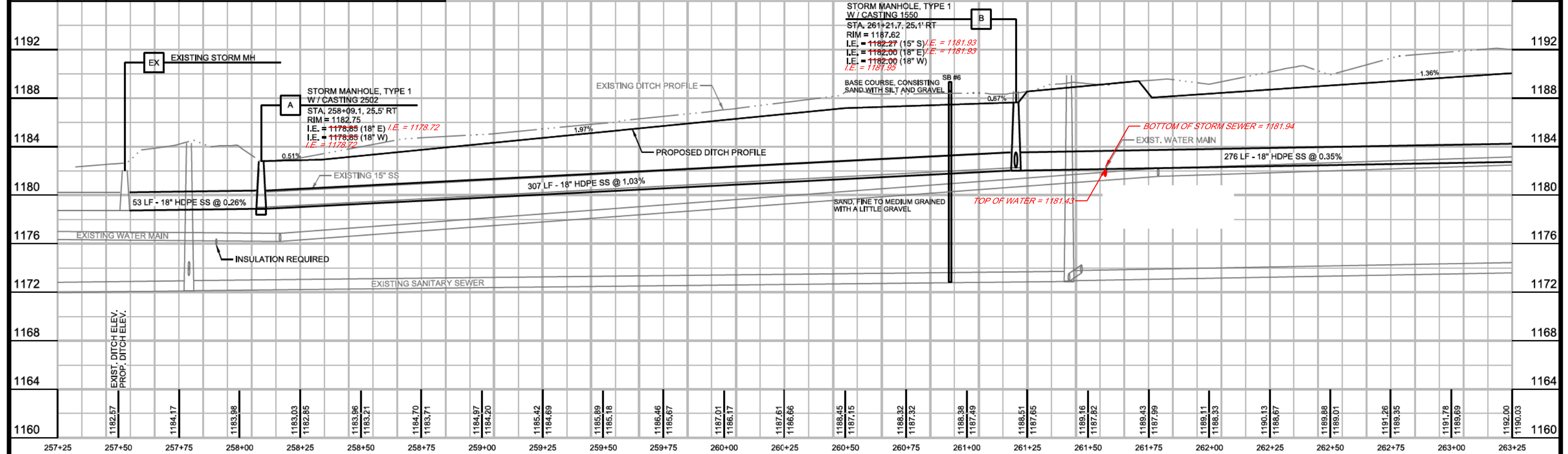
- NOTES:
- 1) EXISTING INLETS SHALL BE PROTECTED FROM SEDIMENTATION, SEE INLET PROTECTION DETAIL, SHEET G 7.
 - 2) EXISTING CULVERTS SHALL BE PROTECTED FROM SEDIMENTATION, SEE CULVERT PIPE DITCH CHECK DETAIL, SHEET G 7.
 - 3) SILT FENCE SHALL BE INSTALLED AT LOCATIONS SHOWN IN PLANS AND AS DETERMINED BY ENGINEER, BASED ON CONTRACTOR'S GRADING AND EXCAVATION OPERATIONS.
 - 4) CONTRACTOR SHALL NOT DISTURB PINE ROAD OR CTH 'X' WITHOUT APPROVAL OF THE ENGINEER.



BENCHMARK TABLE

| BM. NO. | STATION | DESCRIPTION | ELEV. |
|---------|--------------------|-------------|---------|
| CP 10 | 261+45.9, 13.7' LT | BARN SPIKE | 1189.73 |

RECORD DRAWING
The Engineer will not be responsible for any errors or omissions incorporated into this document as a result of information compiled and furnished by others.

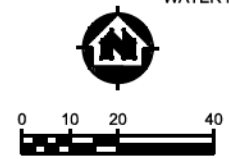
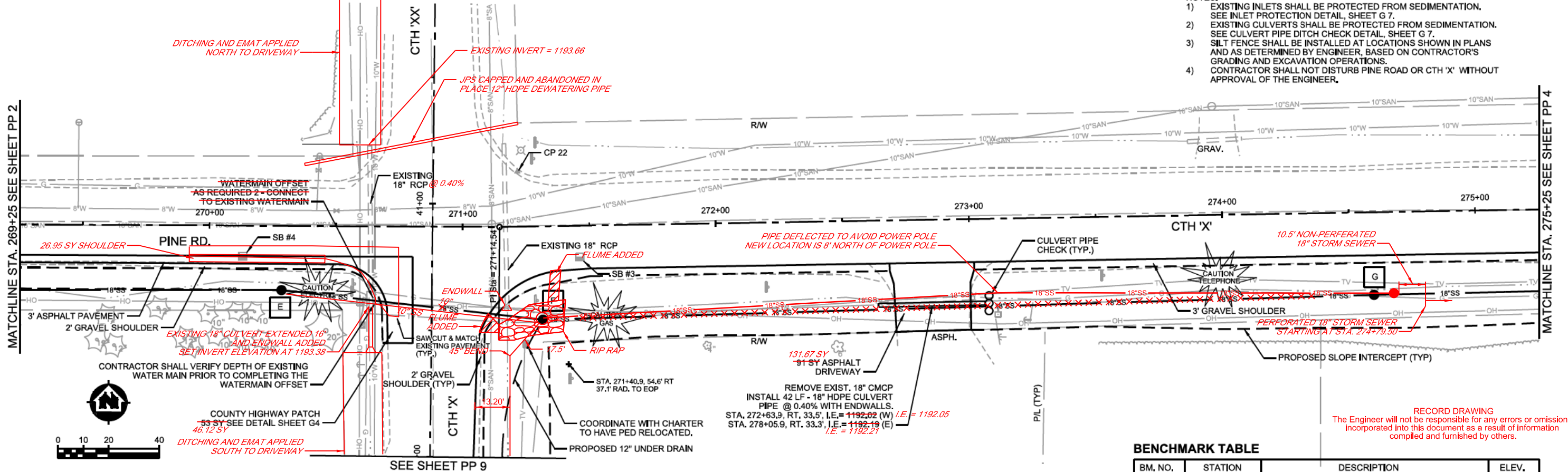


| | | | | | |
|--|-----------------|-----------------|-------------|-----------|---------------------|
| PROJECT NO: 0899006 | SCALE: AS SHOWN | NO.: | DATE: 11/13 | REVISION: | BY: GMS |
| CHECKED BY: ND | DRAWN BY: AP | RECORD DRAWINGS | | | |
| | | | | | |
| <p>TRANSPORTATION • MUNICIPAL DEVELOPMENT • ENVIRONMENTAL</p> <p>146 North Central Ave, Marshfield, WI 54449 715-384-2133 1-877-204-0572 Fax: 715-384-9787 Web Address: www.msa-us.com © MSA Professional Services, Inc.</p> | | | | | |
| <p>PINE RD. PLAN AND PROFILE SHEET</p> | | | | | |
| <p>PHASE II DRAINAGE IMPROVEMENTS VILLAGE OF KRONENWETTER MARATHON COUNTY, WI</p> | | | | | |
| | | | | | FILE NO: 8999006 |
| | | | | | SHEET PP 1 |

- NOTES:
- EXISTING INLETS SHALL BE PROTECTED FROM SEDIMENTATION. SEE INLET PROTECTION DETAIL, SHEET G 7.
 - EXISTING CULVERTS SHALL BE PROTECTED FROM SEDIMENTATION. SEE CULVERT PIPE DITCH CHECK DETAIL, SHEET G 7.
 - SILT FENCE SHALL BE INSTALLED AT LOCATIONS SHOWN IN PLANS AND AS DETERMINED BY ENGINEER, BASED ON CONTRACTOR'S GRADING AND EXCAVATION OPERATIONS. CONTRACTOR SHALL NOT DISTURB PINE ROAD OR CTH 'X' WITHOUT APPROVAL OF THE ENGINEER.

MATCHLINE STA. 269+25 SEE SHEET PP 2

MATCHLINE STA. 275+25 SEE SHEET PP 4

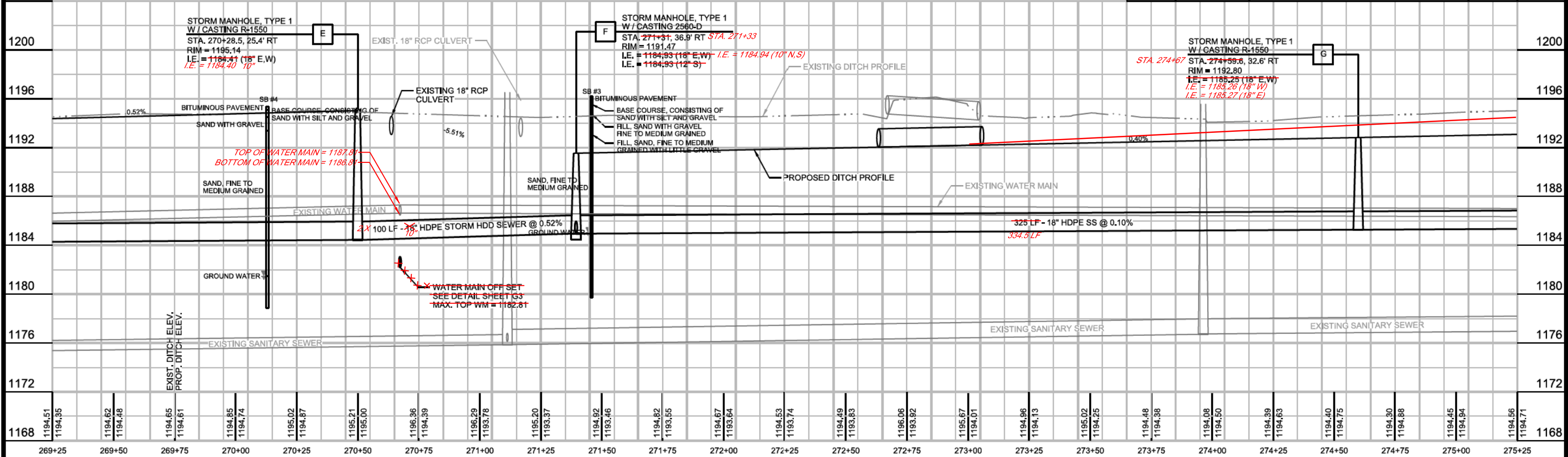


RECORD DRAWING
The Engineer will not be responsible for any errors or omissions incorporated into this document as a result of information compiled and furnished by others.

BENCHMARK TABLE

| BM. NO. | STATION | DESCRIPTION | ELEV. |
|---------|--------------------|-------------|---------|
| CP 22 | 271+21.7, 20.9' LT | BARN SPIKE | 1195.97 |

SEE SHEET PP 9



| STATION | ELEVATION | STATION | ELEVATION | STATION | ELEVATION | STATION | ELEVATION | STATION | ELEVATION | STATION | ELEVATION | STATION | ELEVATION | STATION | ELEVATION | STATION | ELEVATION | STATION | ELEVATION | STATION | ELEVATION | STATION | ELEVATION | STATION | ELEVATION | STATION | ELEVATION | STATION | ELEVATION | STATION | ELEVATION | STATION | ELEVATION | STATION | ELEVATION | | | | | | | | | | | | | | | | | | | | | | | | | | | | | | | | | | | | | | | | | | | | | | | | | | | | | | | | | | | | | | | | |
|---------|-----------|---------|-----------|---------|-----------|---------|-----------|---------|-----------|---------|-----------|---------|-----------|---------|-----------|---------|-----------|---------|-----------|---------|-----------|---------|-----------|---------|-----------|---------|-----------|---------|-----------|---------|-----------|---------|-----------|---------|-----------|--------|---------|--------|---------|--------|---------|--------|---------|--------|---------|--------|---------|--------|---------|--------|---------|--------|---------|--------|---------|--------|---------|--------|---------|--------|---------|--------|---------|--------|---------|--------|---------|--------|---------|--------|---------|--------|---------|--------|---------|--------|---------|--------|---------|--------|---------|--------|---------|--------|---------|--------|---------|--------|---------|--------|---------|--------|---------|--------|---------|--------|---------|--------|---------|
| 269+25 | 1194.51 | 269+25 | 1194.35 | 269+50 | 1194.62 | 269+50 | 1194.48 | 269+75 | 1194.65 | 269+75 | 1194.61 | 270+00 | 1194.85 | 270+00 | 1194.74 | 270+25 | 1195.02 | 270+25 | 1194.87 | 270+50 | 1195.21 | 270+50 | 1195.00 | 270+75 | 1196.36 | 270+75 | 1194.39 | 271+00 | 1196.29 | 271+00 | 1193.78 | 271+25 | 1195.20 | 271+25 | 1193.37 | 271+50 | 1194.82 | 271+50 | 1193.46 | 271+75 | 1194.82 | 271+75 | 1193.55 | 272+00 | 1194.67 | 272+00 | 1193.64 | 272+25 | 1194.53 | 272+25 | 1193.74 | 272+50 | 1194.49 | 272+50 | 1193.83 | 272+75 | 1196.06 | 272+75 | 1193.82 | 273+00 | 1195.67 | 273+00 | 1194.01 | 273+25 | 1194.86 | 273+25 | 1194.13 | 273+50 | 1195.02 | 273+50 | 1194.25 | 273+75 | 1194.48 | 273+75 | 1194.38 | 274+00 | 1194.08 | 274+00 | 1194.50 | 274+25 | 1194.39 | 274+25 | 1194.63 | 274+50 | 1194.40 | 274+50 | 1194.75 | 274+75 | 1194.30 | 274+75 | 1194.88 | 275+00 | 1194.45 | 275+00 | 1194.94 | 275+25 | 1194.56 | 275+25 | 1194.71 |

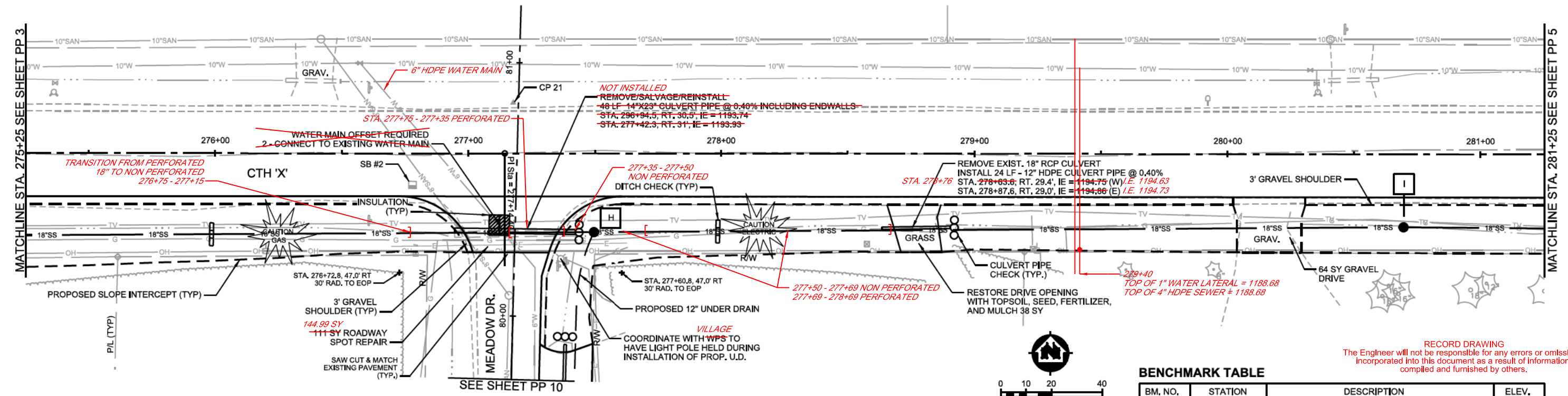
| | | | | | |
|-----------------------------------|-----------------|-------|-----------------|-----------|-----|
| PROJECT NO: 0899006 | SCALE: AS SHOWN | NO.: | DATE: | REVISION: | BY: |
| PROJECT DATE: 04/2018 | DRAWN BY: AP | 11/13 | RECORD DRAWINGS | | SMG |
| CHECKED BY: ND | | | | | |
| PLOT DATE: 05/01/2018 10:14:53 AM | | | | | |

MSA
TRANSPORTATION • MUNICIPAL DEVELOPMENT • ENVIRONMENTAL
146 North Central Ave, Marshfield, WI 54449
715-384-2133 1-877-204-0572 Fax: 715-384-9787
Web Address: www.msa-95.com
© MSA Professional Services, Inc.

PINE RD. PLAN AND PROFILE SHEET

PHASE II DRAINAGE IMPROVEMENTS
VILLAGE OF KRONENWETTER
MARATHON COUNTY, WI
FILE NO. 8999006
SHEET PP 3

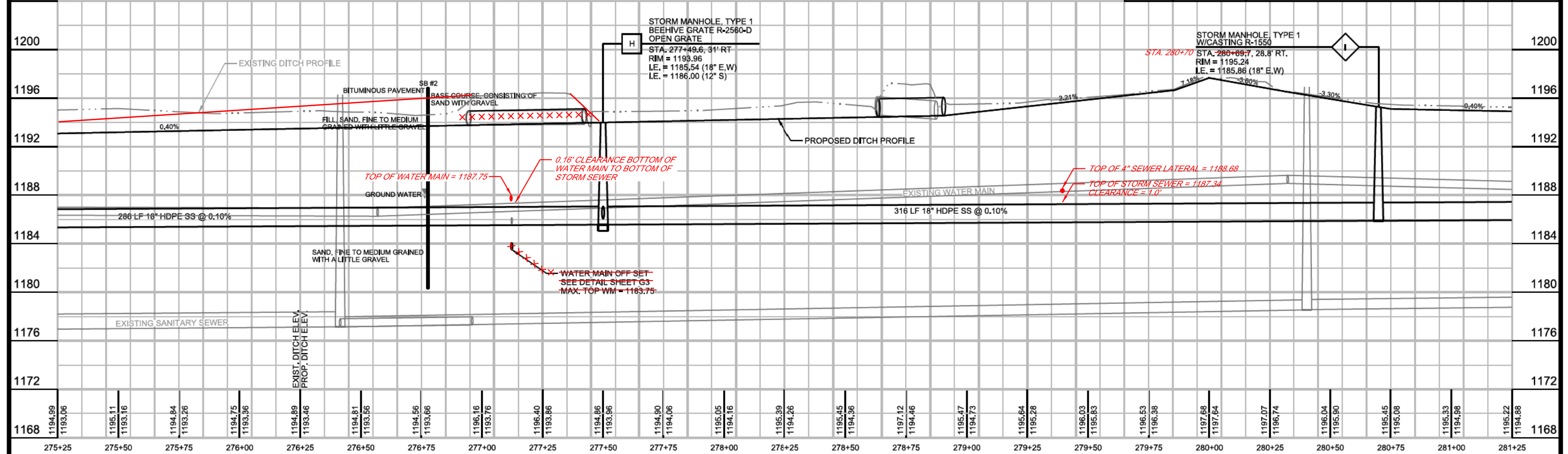
- NOTES:
- EXISTING INLETS SHALL BE PROTECTED FROM SEDIMENTATION. SEE INLET PROTECTION DETAIL, SHEET G 7.
 - EXISTING CULVERTS SHALL BE PROTECTED FROM SEDIMENTATION. SEE CULVERT PIPE DITCH CHECK DETAIL, SHEET G 7.
 - SILT FENCE SHALL BE INSTALLED AT LOCATIONS SHOWN IN PLANS AND AS DETERMINED BY ENGINEER, BASED ON CONTRACTOR'S GRADING AND EXCAVATION OPERATIONS.
 - CONTRACTOR SHALL NOT DISTURB PINE ROAD OR CTH 'X' WITHOUT APPROVAL OF THE ENGINEER.



RECORD DRAWING
The Engineer will not be responsible for any errors or omissions incorporated into this document as a result of information compiled and furnished by others.

BENCHMARK TABLE

| BM. NO. | STATION | DESCRIPTION | ELEV. |
|---------|--------------------|-------------|---------|
| CP 21 | 277+17.5, 18.9' LT | BARN SPIKE | 1196.46 |



| STATION | ELEVATION | STATION | ELEVATION | STATION | ELEVATION | STATION | ELEVATION |
|---------|-----------|---------|-----------|---------|-----------|---------|-----------|
| 275+25 | 1194.99 | 276+25 | 1194.84 | 277+25 | 1194.40 | 280+25 | 1196.04 |
| 275+50 | 1195.11 | 276+50 | 1194.81 | 277+50 | 1194.86 | 280+50 | 1195.90 |
| 275+75 | 1193.16 | 277+00 | 1193.76 | 278+00 | 1194.16 | 280+75 | 1195.08 |
| 276+00 | 1194.75 | 277+25 | 1196.16 | 278+25 | 1195.39 | 281+00 | 1195.33 |
| 276+25 | 1193.36 | 277+50 | 1193.96 | 278+50 | 1194.45 | 281+25 | 1195.22 |
| 276+50 | 1193.56 | 278+00 | 1194.06 | 279+00 | 1195.47 | | |
| 276+75 | 1193.66 | 278+25 | 1194.26 | 279+25 | 1195.64 | | |
| | | 278+50 | 1194.36 | 279+50 | 1195.28 | | |
| | | 278+75 | 1197.12 | | | | |
| | | 279+00 | 1194.46 | | | | |
| | | 279+25 | 1195.47 | | | | |
| | | 279+50 | 1194.73 | | | | |
| | | 279+75 | 1195.64 | | | | |
| | | 280+00 | 1195.28 | | | | |
| | | 280+25 | 1196.03 | | | | |
| | | 280+50 | 1195.83 | | | | |
| | | 280+75 | 1196.53 | | | | |
| | | 281+00 | 1196.38 | | | | |
| | | | 1197.68 | | | | |
| | | | 1197.64 | | | | |
| | | | 1197.07 | | | | |
| | | | 1196.74 | | | | |
| | | | 1196.04 | | | | |
| | | | 1195.90 | | | | |
| | | | 1195.45 | | | | |
| | | | 1195.08 | | | | |
| | | | 1195.33 | | | | |
| | | | 1194.98 | | | | |
| | | | 1195.22 | | | | |
| | | | 1194.88 | | | | |

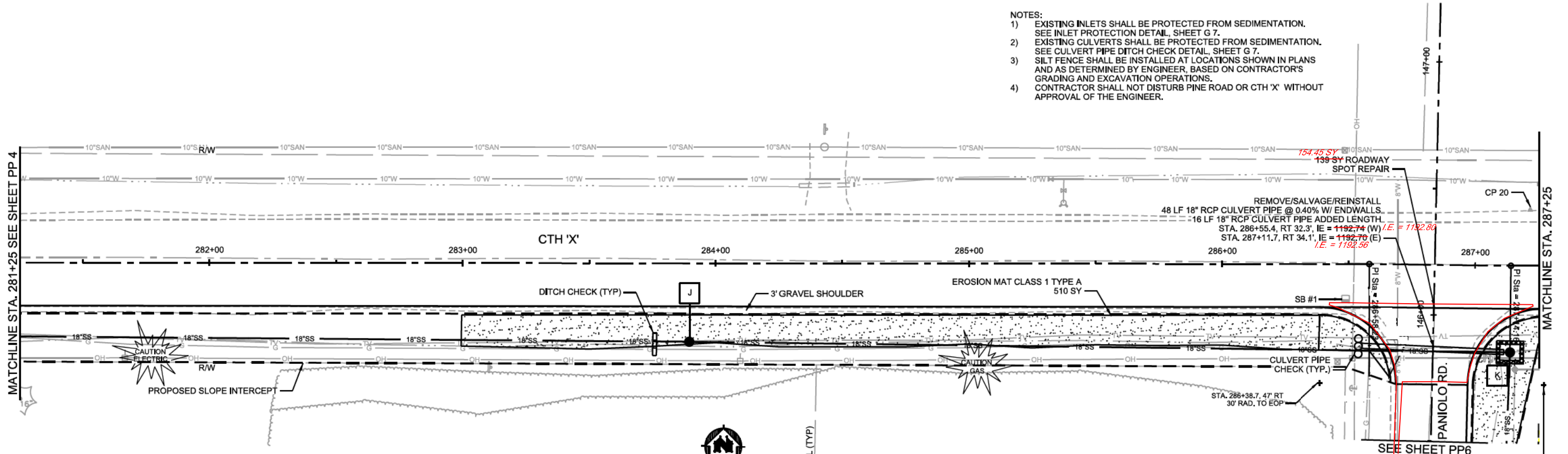
| | | | | | |
|-----------------------------------|-----------------|-------|-----------------|-----------|---------|
| PROJECT NO: 0899006 | SCALE: AS SHOWN | NO.: | DATE: 11/13 | REVISION: | BY: GMS |
| PROJECT DATE: 04/2016 | DRAWN BY: AP | DATE: | RECORD DRAWINGS | | |
| CHECKED BY: ND | | | | | |
| PLOT DATE: 11/13/2016 10:14:53 AM | | | | | |

MSA
TRANSPORTATION • MUNICIPAL DEVELOPMENT • ENVIRONMENTAL
146 North Central Ave, Marshfield, WI 54449
715-384-2133 1-877-204-0572 Fax: 715-384-9787
Web Address: www.msa-us.com
© MSA Professional Services, Inc.

PINE RD. PLAN AND PROFILE SHEET

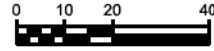
PHASE II DRAINAGE IMPROVEMENTS
VILLAGE OF KRONENWETTER
MARATHON COUNTY, WI
FILE NO. 8999006
SHEET PP 4

- NOTES:
- 1) EXISTING INLETS SHALL BE PROTECTED FROM SEDIMENTATION. SEE INLET PROTECTION DETAIL, SHEET G 7.
 - 2) EXISTING CULVERTS SHALL BE PROTECTED FROM SEDIMENTATION. SEE CULVERT PIPE DITCH CHECK DETAIL, SHEET G 7.
 - 3) SILT FENCE SHALL BE INSTALLED AT LOCATIONS SHOWN IN PLANS AND AS DETERMINED BY ENGINEER, BASED ON CONTRACTOR'S GRADING AND EXCAVATION OPERATIONS.
 - 4) CONTRACTOR SHALL NOT DISTURB PINE ROAD OR CTH 'X' WITHOUT APPROVAL OF THE ENGINEER.

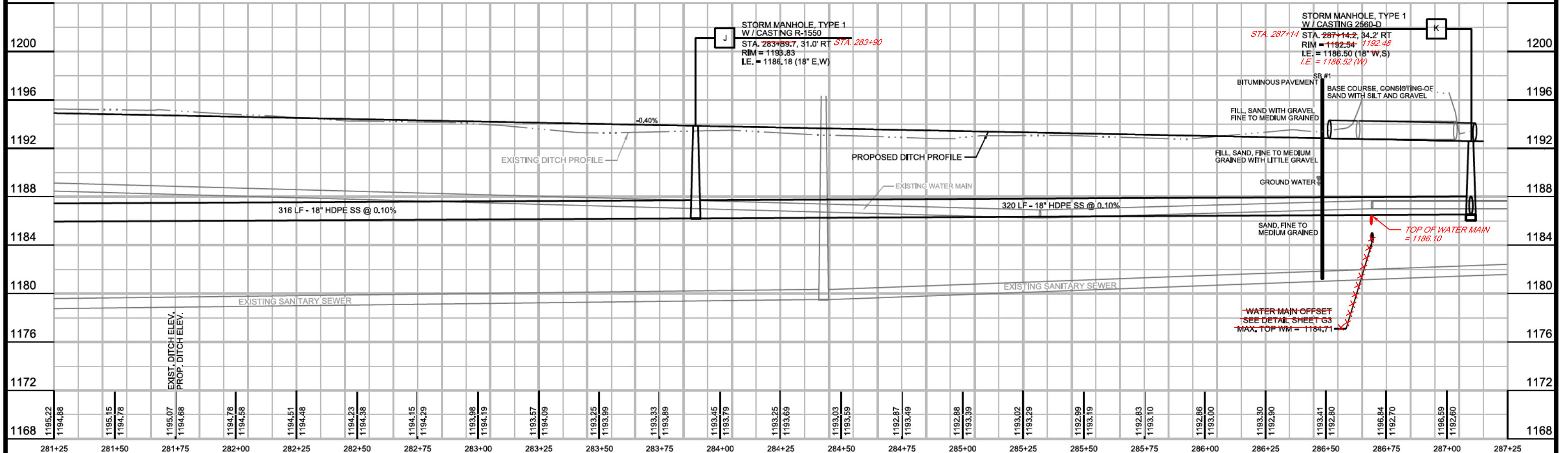


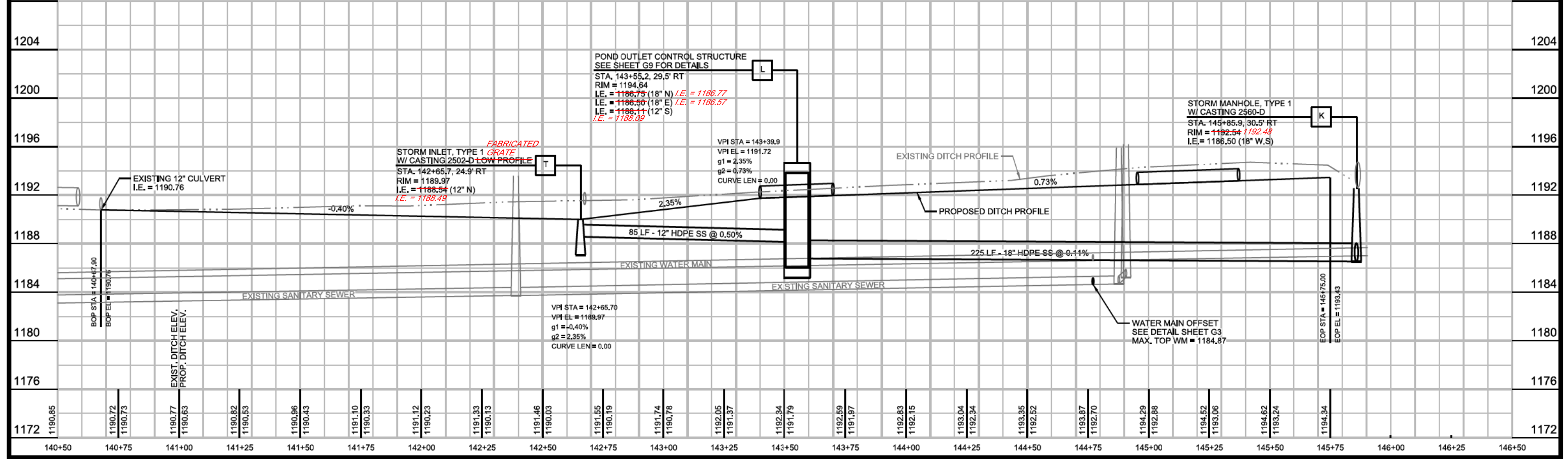
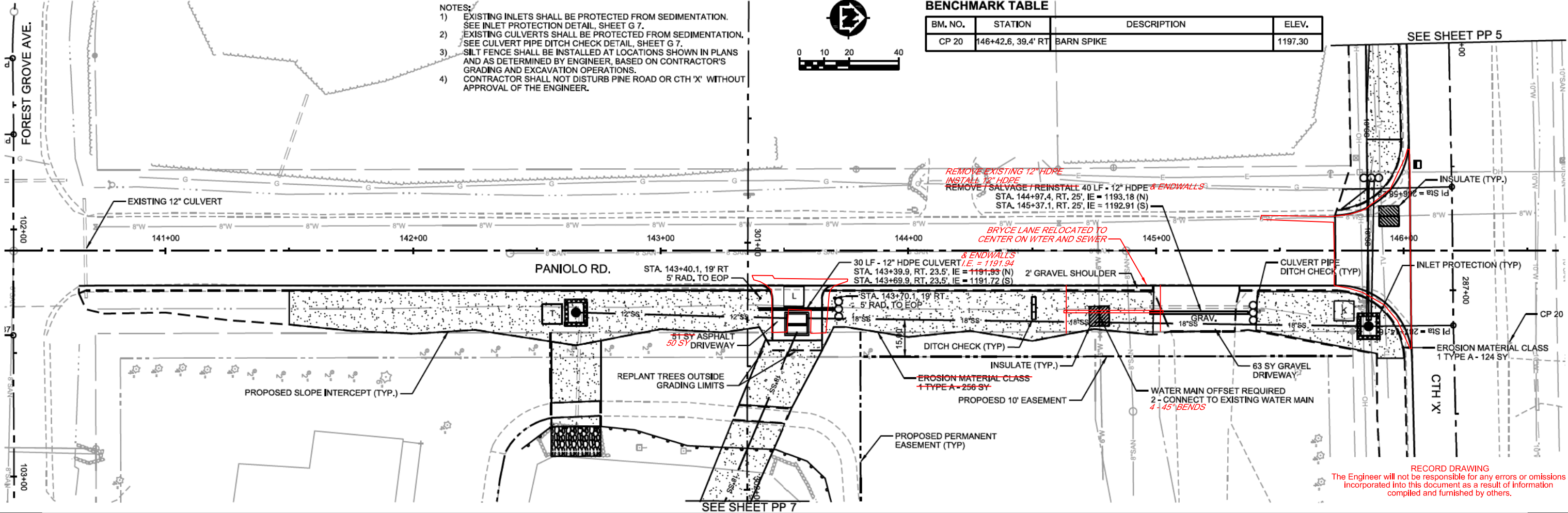
BENCHMARK TABLE

| BM. NO. | STATION | DESCRIPTION | ELEV. |
|---------|--------------------|-------------|---------|
| CP 20 | 287+21.5, 19.3' LT | BARN SPIKE | 1197.30 |

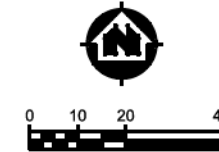
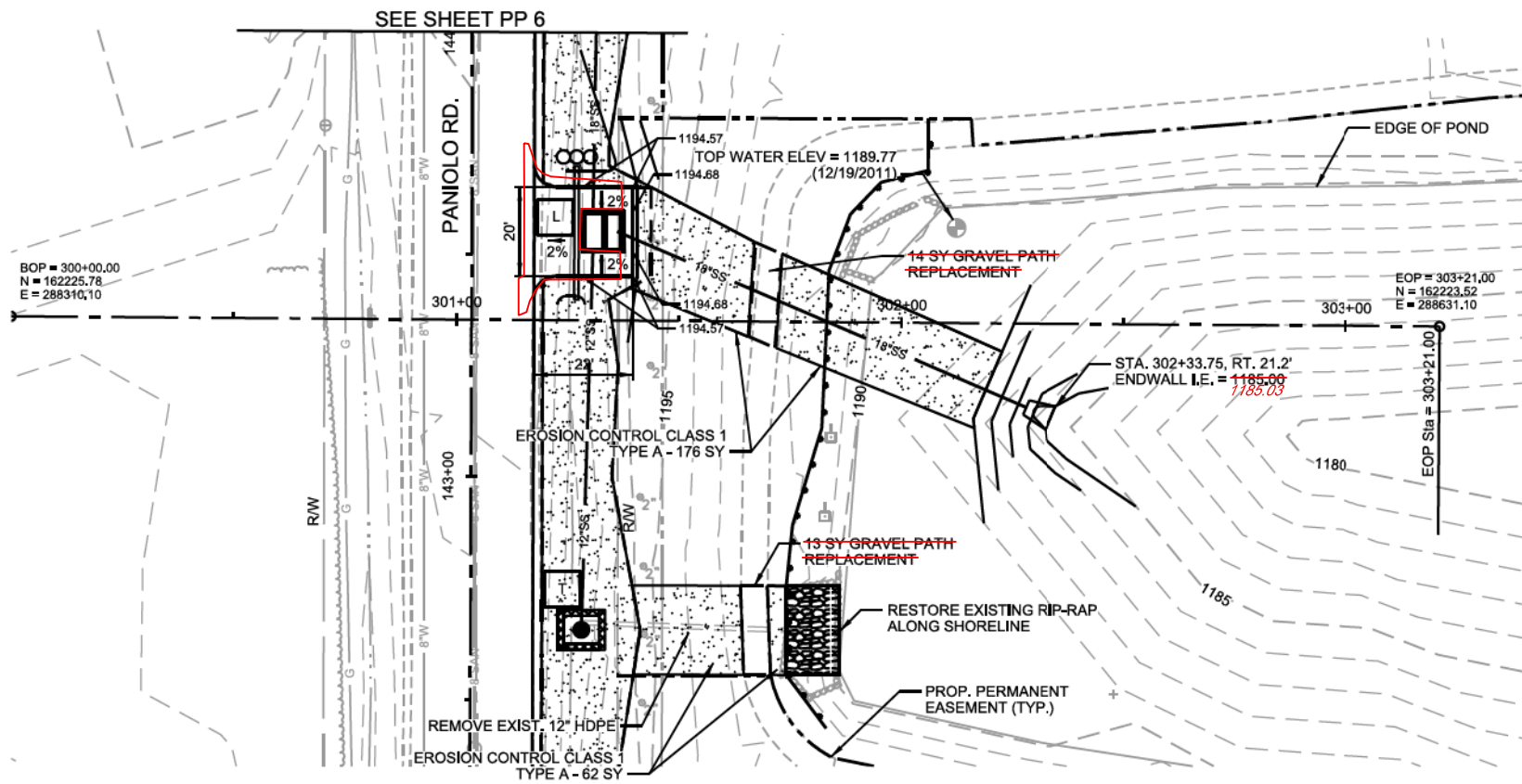


RECORD DRAWING
The Engineer will not be responsible for any errors or omissions incorporated into this document as a result of information compiled and furnished by others.

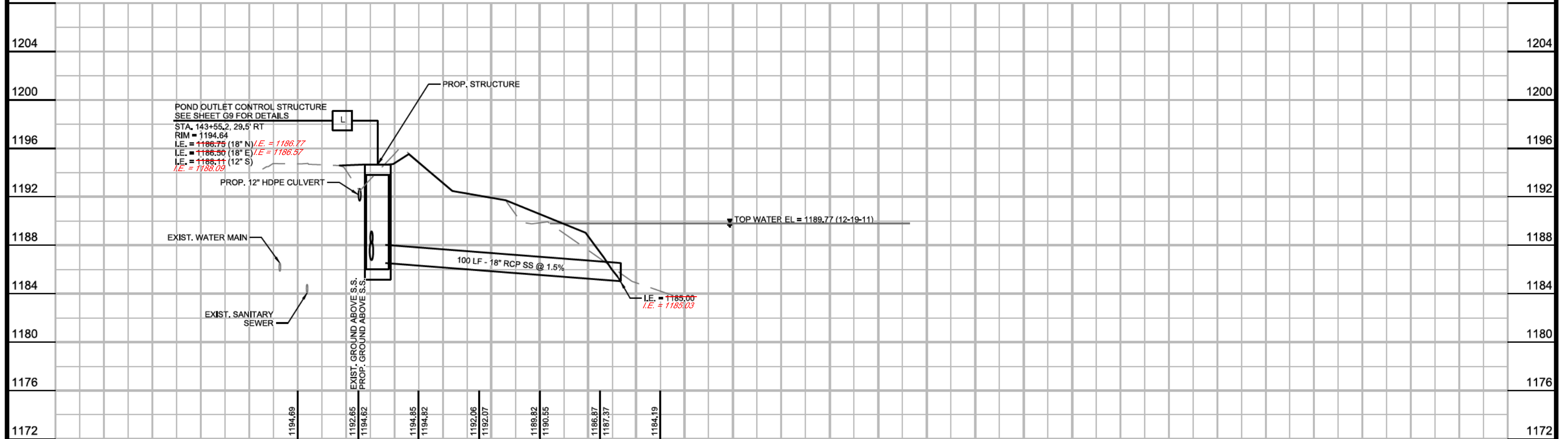




- NOTES:
- 1) EXISTING INLETS SHALL BE PROTECTED FROM SEDIMENTATION. SEE INLET PROTECTION DETAIL, SHEET G 7.
 - 2) EXISTING CULVERTS SHALL BE PROTECTED FROM SEDIMENTATION. SEE CULVERT PIPE DITCH CHECK DETAIL, SHEET G 7.
 - 3) SILT FENCE SHALL BE INSTALLED AT LOCATIONS SHOWN IN PLANS AND AS DETERMINED BY ENGINEER, BASED ON CONTRACTOR'S GRADING AND EXCAVATION OPERATIONS.
 - 4) CONTRACTOR SHALL NOT DISTURB PINE ROAD OR CTH 'X' WITHOUT APPROVAL OF THE ENGINEER.



RECORD DRAWING
The Engineer will not be responsible for any errors or omissions incorporated into this document as a result of information compiled and furnished by others.



| | | | | |
|----------------------|-----------------|-------|-----------------------|-----------|
| PROJECT NO: 0899006 | SCALE: AS SHOWN | NO.: | DATE: | REVISION: |
| PROJECT DATE: 04/13 | DRAWN BY: AP | 08/13 | ADDENDUM #1 | SSD |
| CHECKED BY: ND | | 09/13 | STORM SEWER REVISIONS | SSD |
| | | 11/13 | RECORD DRAWINGS | GMG |
| PLLOT DATE: 08/13/13 | | | | |

MSA
PROFESSIONAL SERVICES

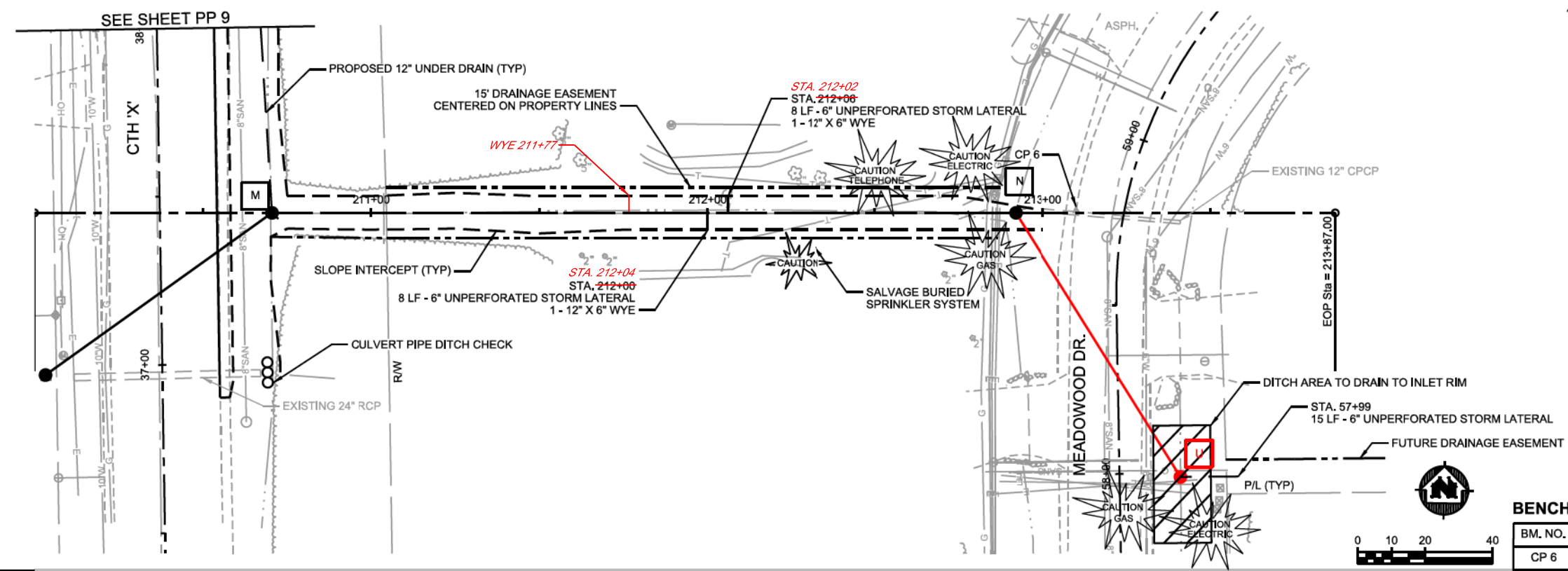
TRANSPORTATION • MUNICIPAL DEVELOPMENT • ENVIRONMENTAL
146 North Central Ave, Marshfield, WI 54449
715-384-2133 1-877-204-0572 Fax: 715-384-3787
Web Address: www.msa-us.com
© MSA Professional Services, Inc.

POND CONNECTION PLAN AND PROFILE SHEET

PHASE II DRAINAGE IMPROVEMENTS
VILLAGE OF KRONENWETTER
MARATHON COUNTY, WI

FILE NO. 8999006
SHEET PP 7

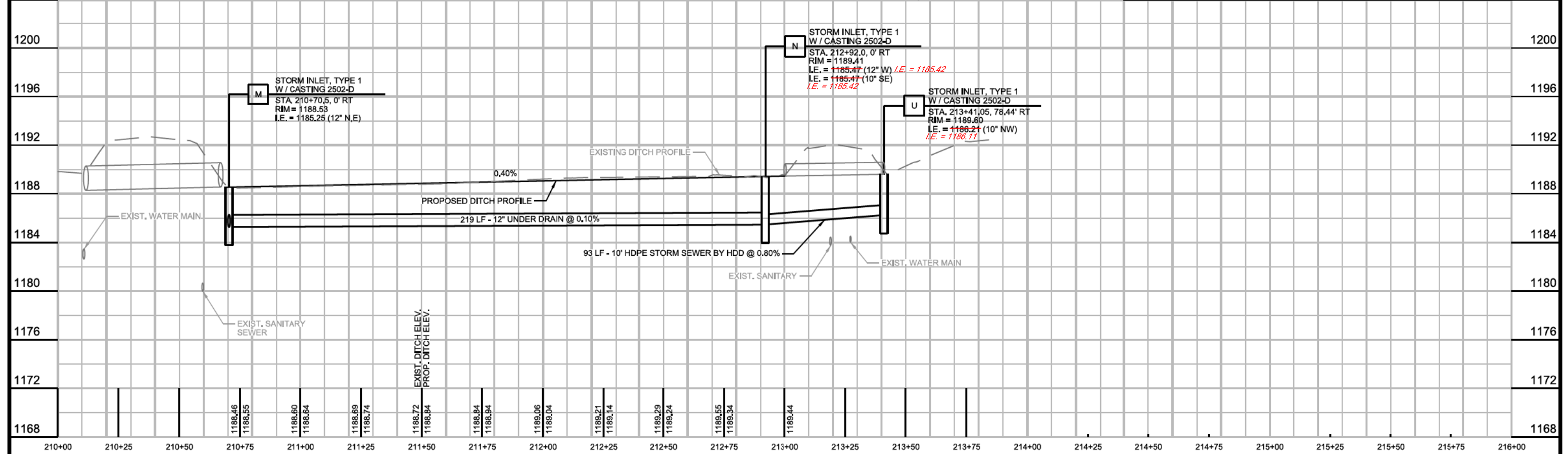
- NOTES:
- 1) EXISTING INLETS SHALL BE PROTECTED FROM SEDIMENTATION. SEE INLET PROTECTION DETAIL, SHEET G 7.
 - 2) EXISTING CULVERTS SHALL BE PROTECTED FROM SEDIMENTATION. SEE CULVERT PIPE DITCH CHECK DETAIL, SHEET G 7.
 - 3) SILT FENCE SHALL BE INSTALLED AT LOCATIONS SHOWN IN PLANS AND AS DETERMINED BY ENGINEER, BASED ON CONTRACTOR'S GRADING AND EXCAVATION OPERATIONS.
 - 4) CONTRACTOR SHALL NOT DISTURB PINE ROAD OR CTH 'X' WITHOUT APPROVAL OF THE ENGINEER.



RECORD DRAWING
The Engineer will not be responsible for any errors or omissions incorporated into this document as a result of information compiled and furnished by others.

BENCHMARK TABLE

| BM. NO. | STATION | DESCRIPTION | ELEV. |
|---------|-----------------|-------------|---------|
| CP 6 | 213+10, 0.8' LT | BARN SPIKE | 1191.69 |



| | | | | |
|-----------------------------------|-----------------|-------------|-----------|---------|
| PROJECT NO. 0899006 | SCALE: AS SHOWN | DATE: 11/13 | REVISION: | BY: GMS |
| PROJECT DATE: 04/2018 | DRAWN BY: AP | DATE: 11/13 | REVISION: | BY: GMS |
| CHECKED BY: ND | | | | |
| PLOT DATE: 11/13/2018 10:14:30 AM | | | | |

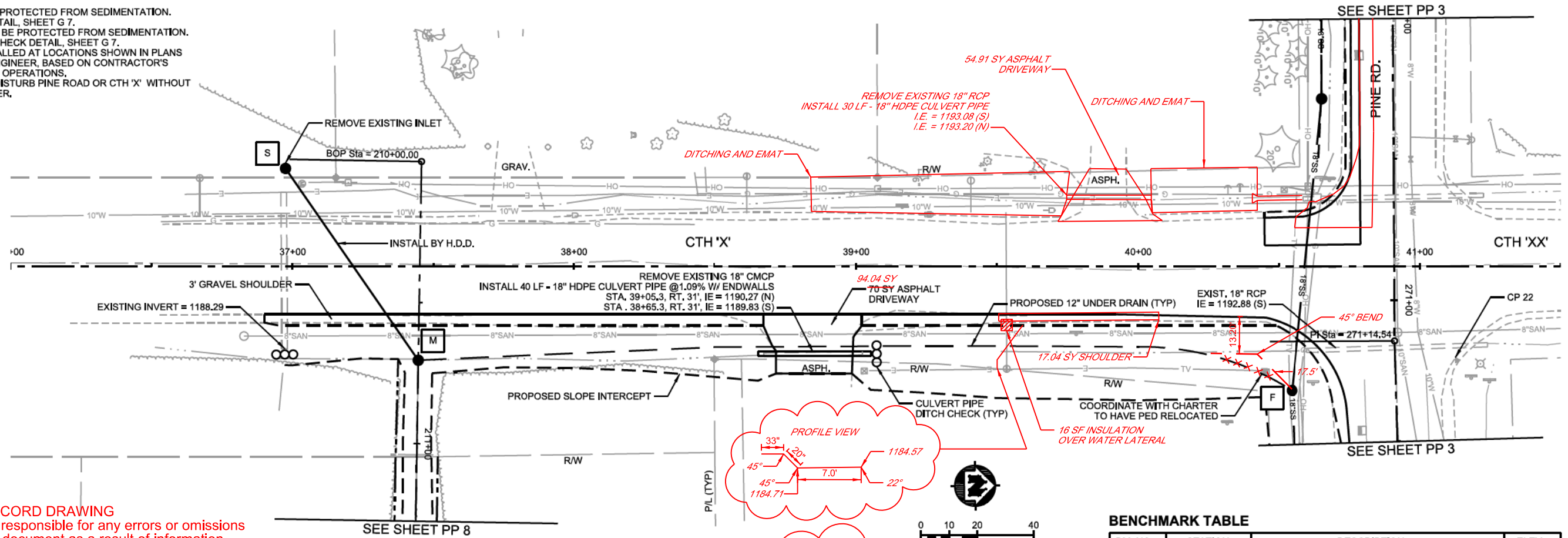
MSA
PROFESSIONAL SERVICES

TRANSPORTATION • MUNICIPAL
DEVELOPMENT • ENVIRONMENTAL

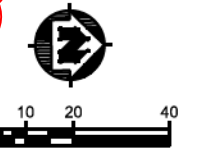
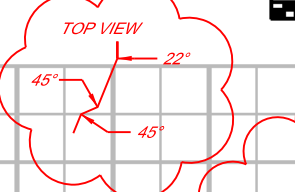
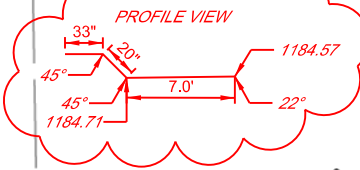
148 North Central Ave., Marshfield, WI 54449
715-384-2133 1-877-204-0572 Fax: 715-384-9787
Web Address: www.msa-ps.com
© MSA Professional Services, Inc.

PERMANENT EASEMENT PLAN AND PROFILE SHEET

- NOTES:
- EXISTING INLETS SHALL BE PROTECTED FROM SEDIMENTATION. SEE INLET PROTECTION DETAIL, SHEET G 7.
 - EXISTING CULVERTS SHALL BE PROTECTED FROM SEDIMENTATION. SEE CULVERT PIPE DITCH CHECK DETAIL, SHEET G 7.
 - SILT FENCE SHALL BE INSTALLED AT LOCATIONS SHOWN IN PLANS AND AS DETERMINED BY ENGINEER, BASED ON CONTRACTOR'S GRADING AND EXCAVATION OPERATIONS.
 - CONTRACTOR SHALL NOT DISTURB PINE ROAD OR CTH 'X' WITHOUT APPROVAL OF THE ENGINEER.

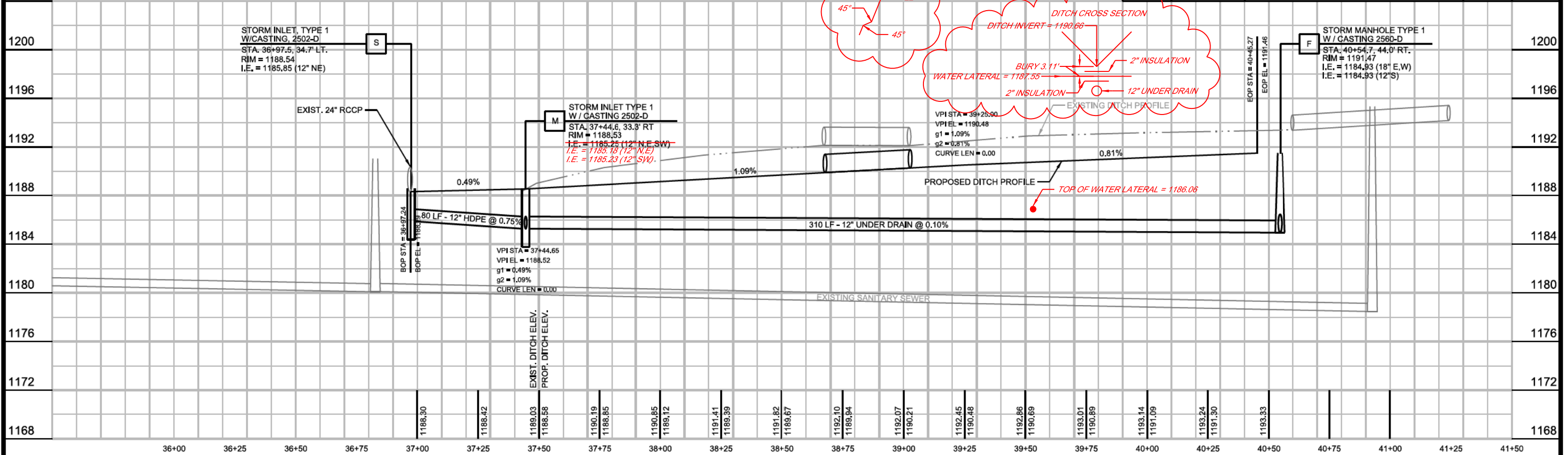


RECORD DRAWING
 The Engineer will not be responsible for any errors or omissions incorporated into this document as a result of information compiled and furnished by others.

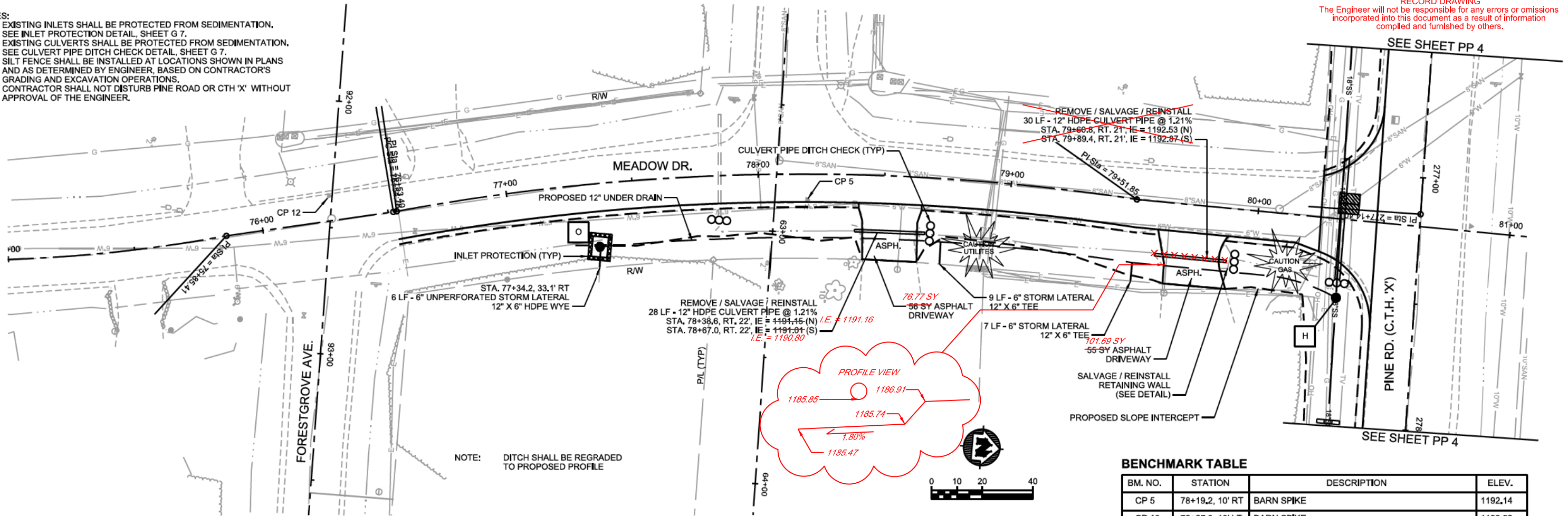


BENCHMARK TABLE

| BM. NO. | STATION | DESCRIPTION | ELEV. |
|---------|-------------------|-------------|---------|
| CP 22 | 41+13.3, 30.7' RT | BARN SPIKE | 1195.97 |



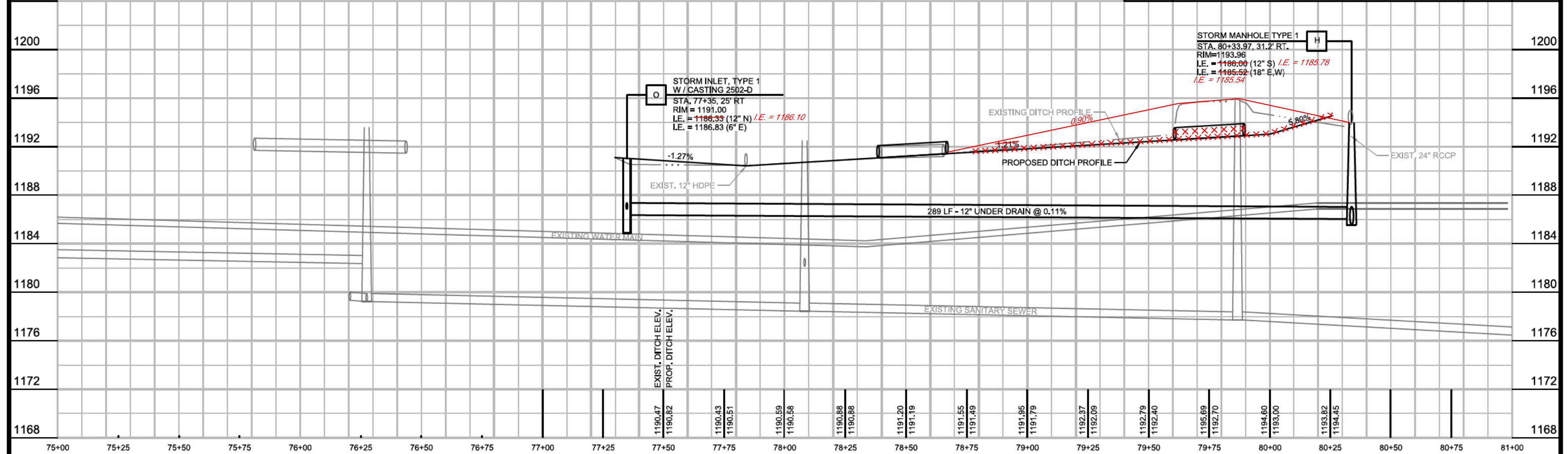
- NOTES:
- 1) EXISTING INLETS SHALL BE PROTECTED FROM SEDIMENTATION. SEE INLET PROTECTION DETAIL, SHEET G 7.
 - 2) EXISTING CULVERTS SHALL BE PROTECTED FROM SEDIMENTATION. SEE CULVERT PIPE DITCH CHECK DETAIL, SHEET G 7.
 - 3) SILT FENCE SHALL BE INSTALLED AT LOCATIONS SHOWN IN PLANS AND AS DETERMINED BY ENGINEER, BASED ON CONTRACTOR'S GRADING AND EXCAVATION OPERATIONS.
 - 4) CONTRACTOR SHALL NOT DISTURB PINE ROAD OR CTH 'X' WITHOUT APPROVAL OF THE ENGINEER.



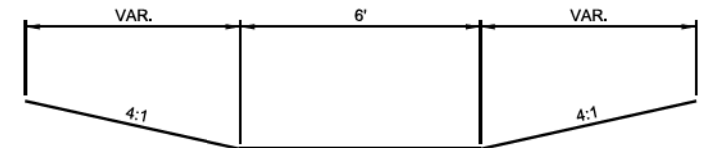
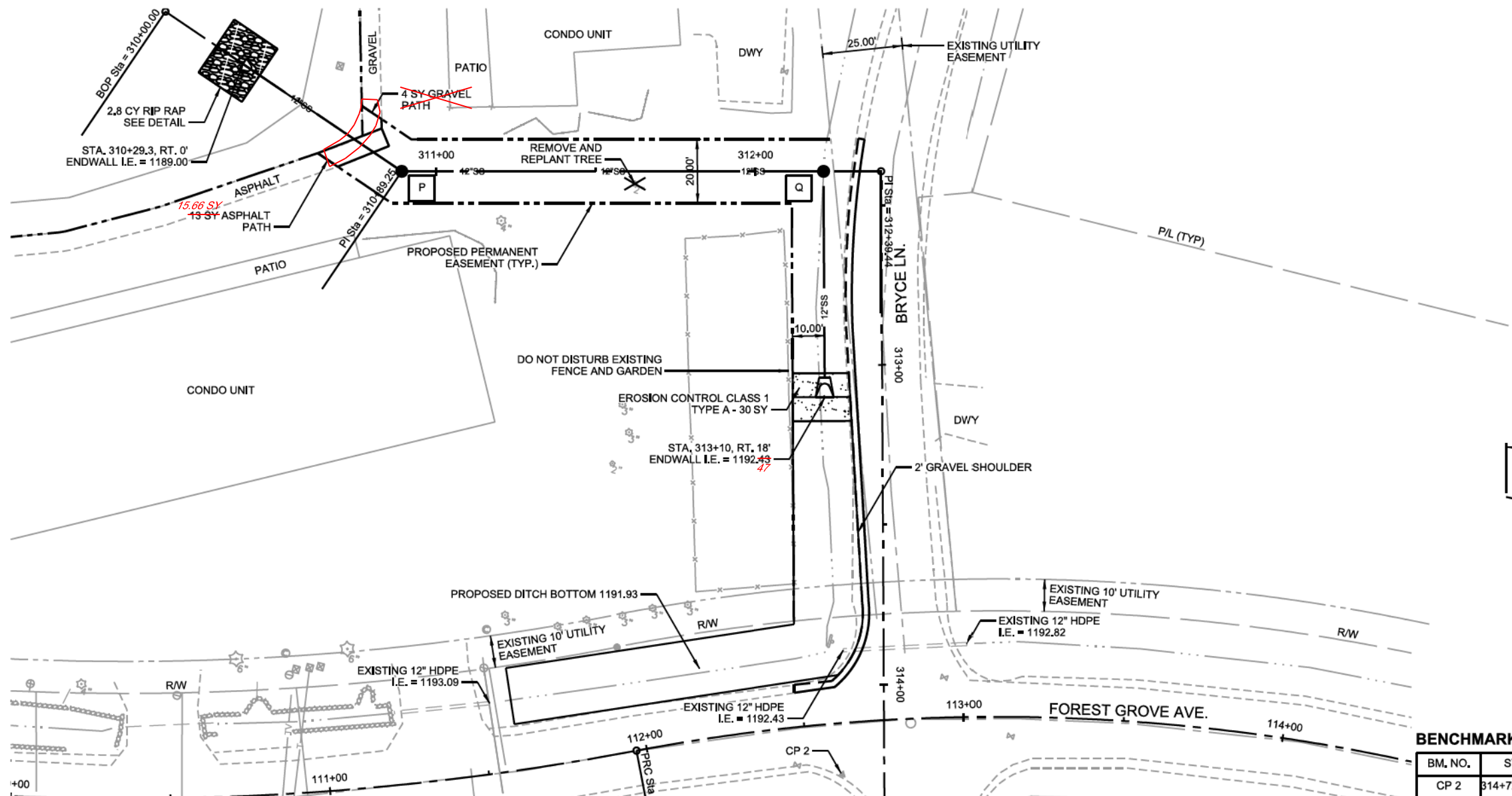
NOTE: DITCH SHALL BE REGRADED TO PROPOSED PROFILE

BENCHMARK TABLE

| BM. NO. | STATION | DESCRIPTION | ELEV. |
|---------|-----------------|-------------|---------|
| CP 5 | 78+19.2, 10' RT | BARN SPIKE | 1192.14 |
| CP 12 | 76+27.8, 10' LT | BARN SPIKE | 1193.52 |



NOTE:
1) CONTRACTOR SHALL VERIFY LOCATIONS
EXISTING UTILITIES

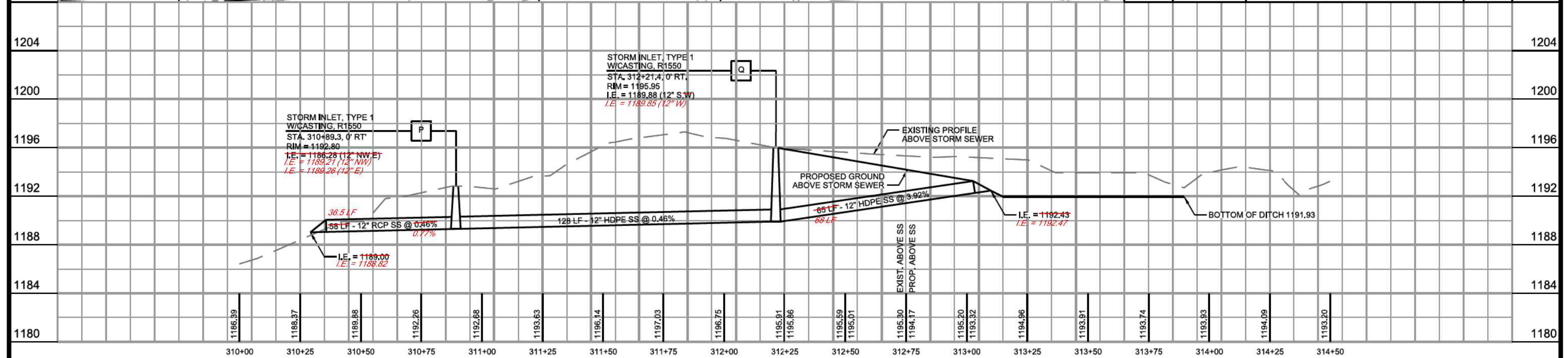


RECORD DRAWING
The Engineer will not be responsible for any errors or omissions
incorporated into this document as a result of information
compiled and furnished by others.



BENCHMARK TABLE

| BM. NO. | STATION | DESCRIPTION | ELEV. |
|---------|--------------------|-------------------------------|---------|
| CP 2 | 314+72.0, 13.2' RT | BARN SPIKE IN GRAVEL SHOULDER | 1193.97 |



| PROJECT NO. | SCALE | AS SHOWN | NO. | DATE | BY |
|-------------|----------|----------|-----|-------|-----|
| 0899006 | AS SHOWN | | | 08/13 | SSD |
| 0899006 | AS SHOWN | | | 09/13 | SSD |
| 0899006 | AS SHOWN | | | 11/13 | SSD |

MSA
TRANSPORTATION • MUNICIPAL
DEVELOPMENT • ENVIRONMENTAL
146 North Central Ave., Marshfield, WI 54449
715-384-2133 1-877-204-0572 Fax: 715-384-3787
Web Address: www.msa-us.com
© MSA Professional Services, Inc.

BRYCE LN. PLAN AND PROFILE SHEET

PHASE II DRAINAGE IMPROVEMENTS
VILLAGE OF KRONENWETTER
MARATHON COUNTY, WI
FILE NO. 8999006
SHEET PP 11