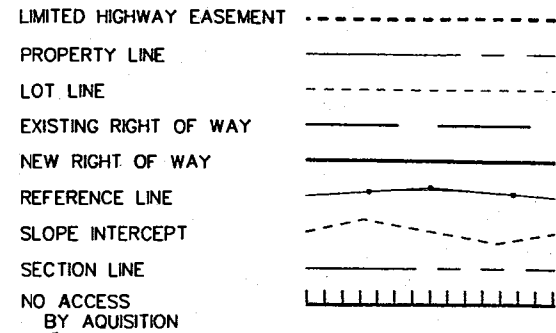


CONVENTIONAL SIGNS AND ABBREVIATIONS



A.P.	ACCESS POINT	R	RANGE
A.C.	ACRE	RT	RIGHT
E	EAST	R/W	RIGHT OF WAY
X	EAST GRID COORDINATE	SEC	SECTION
FND	FOUND	S	SOUTH
GAR	GARAGE	SF	SQUARE FOOT
ha	HECACRE	sm	SQUARE METER
km	KILOMETER	STA	STATION
m	METER	TEMP	TEMPORARY
N	NORTH	TI	TEMPORARY INTEREST EASEMENT
Y	NORTH GRID COORDINATE	T	TOWN
P	PAGE	VOL	VOLUME
PLE	PERMANANT LIMITED EASEMENT	W	WEST
P/L	PROPERT LINE		
P.I.	POINT OF INTERSECTION		
P.O.T.	POINT ON TANGENT		

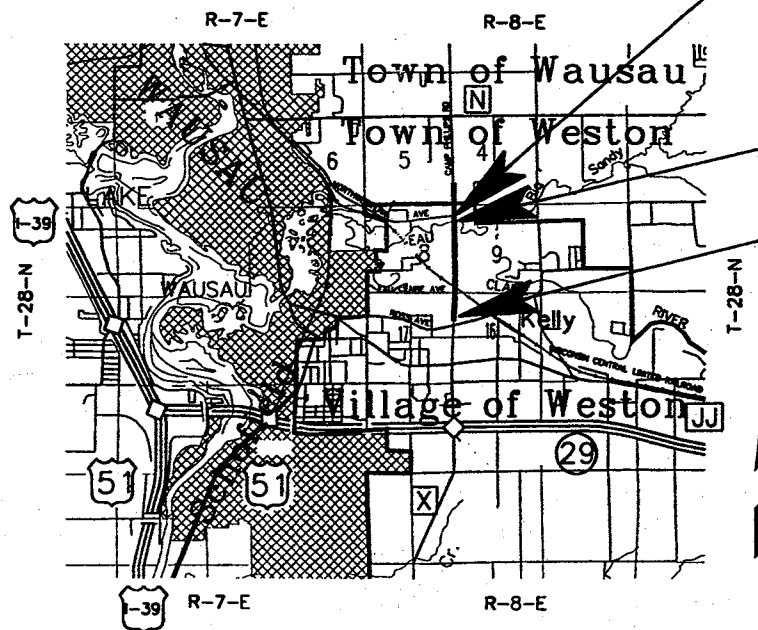
NO ACCESS BY PREVIOUS AQUISION [Symbol]

SECTION CORNER [Symbol]

TEMPORARY INTEREST EASEMENT [Symbol]

SET 3/4" X 24" IRON ROD WEIGHING 1.50 LBS/LIN. FT.

R/W PROJECT NUMBER 6676-03-01	SHEET NUMBER 4.0	TOTAL SHEETS 9
FEDERAL PROJECT NUMBER		
PLAT OF RIGHT OF WAY REQUIRED FOR CAMP PHILLIPS ROAD (ROSS AVENUE TO NORTHWESTERN AVENUE)		
CAMP PHILLIPS ROAD		MARATHON COUNTY



END RELOCATION ORDER
 PROJECT 6676-03-01
 STA. 1+822.616
 201.45 m SOUTH AND 8.90 m EAST OF THE
 S/W CORNER OF SEC. 4, T28N, R8E
 PROJECT COORDINATES
 Y = 121,862.830
 X = 24,160.154

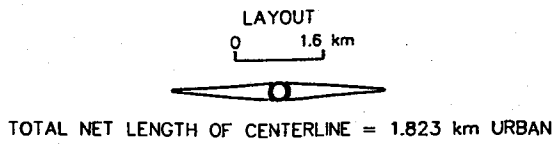
STRUCTURE
 B-37-295

BEGIN RELOCATION ORDER
 PROJECT 6676-03-01
 STA. 0+000
 395.93 m NORTH AND 23.67 m EAST OF THE
 WEST 1/4 CORNER OF SEC. 16, T28N, R8E
 STATE PLANE PROJECT COORDINATES (METERS)
 Y = 120,068.57 Y = 120,041.348
 X = 643,367.85 EQUALS X = 24,159.303

NOTES:

STATE PLANE COORDINATES WERE SCALED FROM U.S.G.S. TOPOGRAPHIC MAP "WAUSAU EAST, WISCONSIN" QUADRANGLE, FOR IDENTIFICATION ONLY.
 PROJECT COORDINATES WERE TRANSFERRED FROM THE FOTH & VAN DYKE REPORT, EASTERN ARTERIAL, (CAMP PHILLIPS ROAD - 41 ST STREET) RIGHT-OF-WAY DETERMINATION, SCOPE ID : 91M34.
 THE N.E. CORNER OF SEC. 17, T28N, R8E SET AS Y= 395,201.36 FT., X= 2,079,344.30 FT., X 2,000,000 FT. WAS DROPPED FOR EASE OF HANDLING.
 METRIC CONVERSION, Y=120,457.616 m, X=24,184.191 m
 RIGHT OF WAY BOUNDARIES ARE REFERENCED TO THE U.S. PUBLIC LAND SURVEY.

STA. 0+000 - 0+100
 R = C = SECTION LINE
 STA. 0+180 - 0+417
 R = FLAG RT MEDIAN C&G = SECTION LINE
 STA. 0+451 - END
 R = C = NORTH BOUND LANES



ACCEPTED FOR
MARATHON COUNTY
 DATE: [Signature]
 (GLENN SPEICH, HIGHWAY COMMISSIONER)

ORIGINAL PLANS PREPARED BY
CENTRAL WISCONSIN ENGINEERS & ARCHITECTS, INC.:
 WISCONSIN
 ROBERT D. ENGELMAN
 S-1694
 SCHOFIELD
 WI
 DATE: [Signature]
 (Signature)

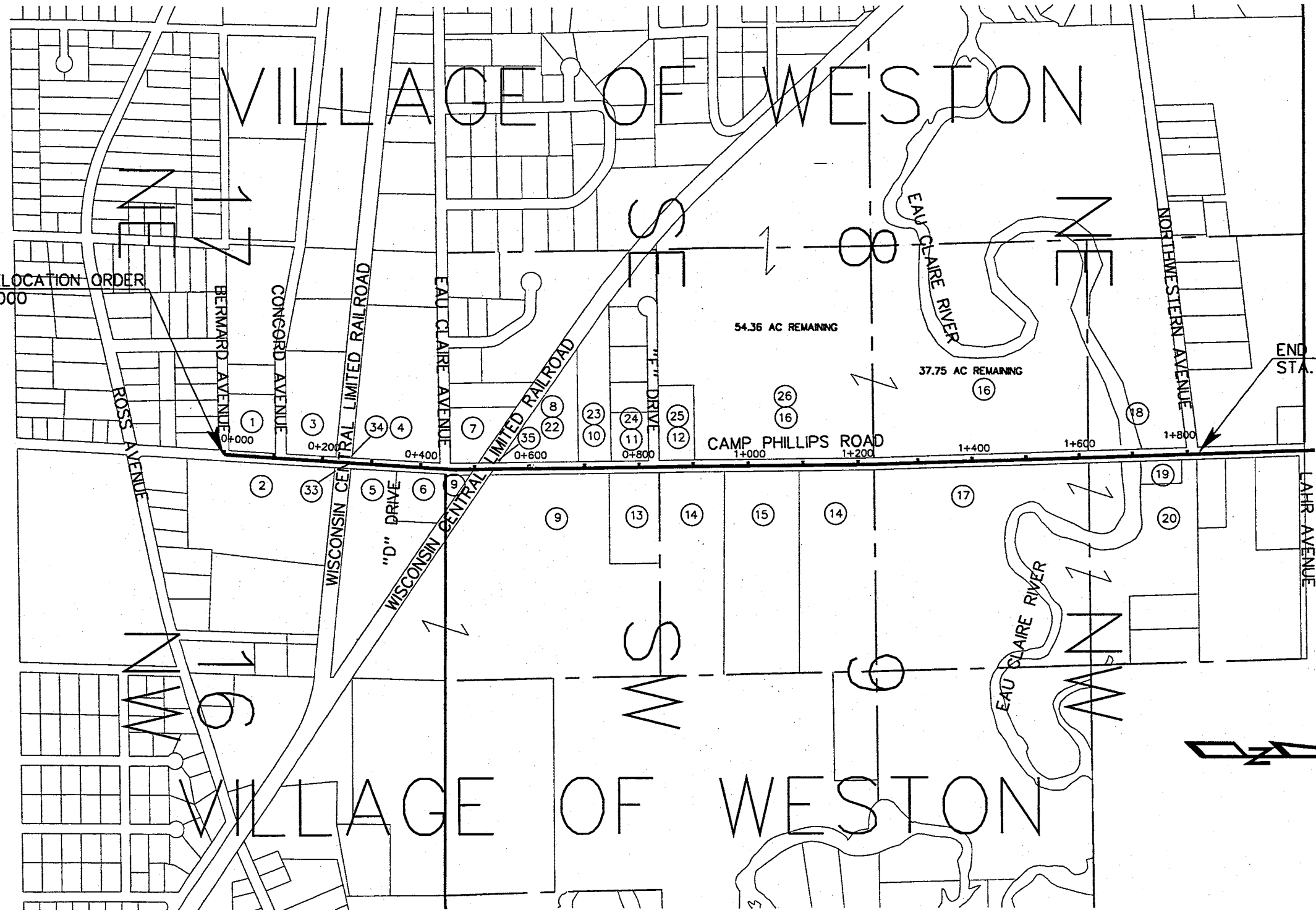
REVISION DATE:
 10/02/01

STATE OF WISCONSIN
 DEPARTMENT OF TRANSPORTATION
 APPROVED FOR DISTRICT OFFICE:
 DATE: 10/10/99 [Signature]
 (Signature)

T 28 N

TOWN OF WESTON

R 8 E



BEGIN RELOCATION ORDER
STA. 0+000

END RELOCATION ORDER
STA. 1+822.616

54.36 AC REMAINING

37.75 AC REMAINING

CAMP PHILLIPS ROAD

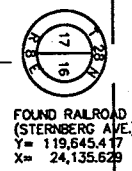
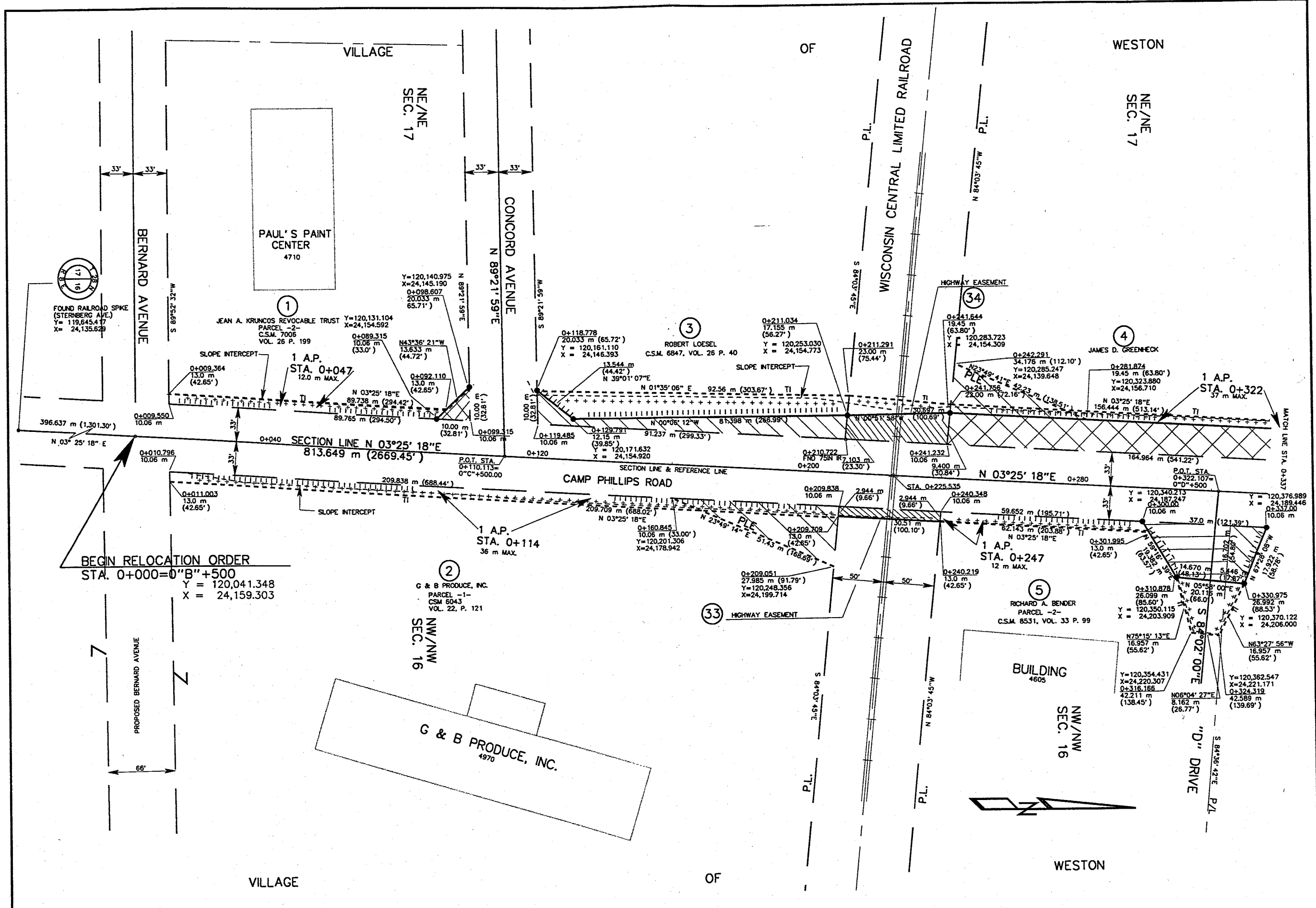
rowmap.S70

REVISION DATE 10/02/01	DATE 6-10-99	NOT TO SCALE	HWY: CAMP PHILLIPS ROAD	FEDERAL PROJECT NO:	
	GRID FACTOR		COUNTY: MARATHON	STATE R/W PROJECT NO: 6676-03-01	SHEET NO: 4.2

SCHEDULE OF LANDS & INTERESTS REQUIRED

AREAS SHOWN IN THE TOTAL ACRES COLUMN MAY BE APPROXIMATE AND ARE DERIVED FROM TAX ROLLS OR OTHER AVAILABLE SOURCES AND MAY NOT INCLUDE LANDS OF THE OWNER WHICH ARE NOT CONTIGUOUS TO THE AREA TO BE ACQUIRED.

PARCEL NUMBER	SHEET NUMBER	OWNER(S)	INTEREST REQUIRED	TOTAL AREA	NEW	R/W AREA OR EXISTING	TOTAL	TOTAL AREA REMAINING	T.I. AREA	P.L.E. AREA
1	4.3	JEAN A. KRUNCOS REVOCABLE TRUST	FEE, T1 & ACCESS RIGHTS	0.971 ha (2.40 AC)	0.005 ha (0.01 AC)	—	0.005 ha (0.01 AC)	0.966 ha (2.39 AC)	0.027 ha (0.07 AC)	—
2	4.3	G & B PRODUCE, INC	PLE, T1 & ACCESS RIGHTS	4.719 ha (11.66 AC)	—	—	—	—	0.059 ha (0.15 AC)	0.044 ha (0.12 AC)
3	4.3	ROBERT LOESEL	FEE, T1 & ACCESS RIGHTS	2.007 ha (4.96 AC)	0.044 ha (0.11 AC)	—	0.044 ha (0.11 AC)	1.963 ha (4.85 AC)	0.062 ha (0.15 AC)	—
4	4.3 - 4.4	JAMES D. GREENHECK	FEE, PLE, T1 & ACCESS RIGHTS	4.264 ha (10.536 AC)	0.157 ha (0.39 AC)	—	0.157 ha (0.39 AC)	4.107 ha (10.146 AC)	0.040 ha (0.10 AC)	0.030 ha (0.07 AC)
5	4.3	RICHARD A. BENDER	FEE, T1 & ACCESS RIGHTS	3.476 ha (8.589 AC)	0.033 ha (0.082 AC)	—	0.033 ha (0.082 AC)	3.443 ha (8.507 AC)	0.036 ha (0.089 AC)	—
6	4.3 - 4.4	ARVILLA A. BENDER	FEE, T1 & ACCESS RIGHTS	0.871 ha (2.152 AC)	0.014 ha (0.035 AC)	—	0.014 ha (0.035 AC)	0.857 ha (2.12 AC)	0.157 ha (0.388 AC)	—
7	4.4	CHESTER J. CHEREK & MARY J. CHEREK	FEE & ACCESS RIGHTS	1.012 ha (2.50 AC)	0.067 ha (0.17 AC)	—	0.067 ha (0.17 AC)	0.945 ha (2.33 AC)	—	—
8	4.4	BETTY R. SCHEEL (n/k/a BETTY R. BESSETTE)	FEE, PLE & ACCESS RIGHTS	1.582 ha (3.91 AC)	0.181 ha (0.45 AC)	—	0.181 ha (0.45 AC)	1.400 ha (3.46 AC)	—	0.017 ha (0.04 AC)
9	4.4 - 4.5	ROBERT C. & RUTH D. GREENHECK (TRUSTEES) THE GREENHECK FAMILY TRUST	PLE & ACCESS RIGHTS	13.497 ha (33.35 AC)	—	—	—	13.497 ha (33.35 AC)	—	0.177 ha (0.44 AC)
10	4.4 - 4.5	THE ESTATE OF GLADYS ROLOFF	FEE & ACCESS RIGHTS	1.578 ha (3.90 AC)	0.076 ha (0.19 AC)	—	0.076 ha (0.19 AC)	1.502 ha (3.71 AC)	—	—
11	4.5	LORENE K. ZILISCH	FEE, T1 & ACCESS RIGHTS	0.652 ha (1.61 AC)	0.089 ha (0.22 AC)	—	0.089 ha (0.22 AC)	0.563 ha (1.39 AC)	0.139 ha (0.34 AC)	—
12	4.5	FRED P. NOVAK	FEE, T1 & ACCESS RIGHTS	0.939 ha (2.32 AC)	0.084 ha (0.21 AC)	—	0.084 ha (0.21 AC)	0.855 ha (2.11 AC)	0.121 ha (0.30 AC)	—
13	4.5	MARVIN E. DRAKE & GAIL L. DRAKE	ACCESS RIGHTS	1.821 ha (4.50 AC)	—	—	—	1.821 ha (4.50 AC)	—	—
14	4.5 - 4.6	ROBERT C. & RUTH D. GREENHECK (TRUSTEES) THE GREENHECK FAMILY TRUST	T1 & ACCESS RIGHTS	37.693 ha (93.14 AC)	—	—	—	37.693 ha (93.14 AC)	0.063 ha (0.16 AC)	—
15	4.5 - 4.6	SCOTT L. & MARY R. TURNER	ACCESS RIGHTS	5.325 ha (13.16 AC)	—	—	—	5.326 ha (13.16 AC)	—	—
16	4.5 - 4.7	FRED J. DEHNEL & DONNA M. DEHNEL	FEE, T1 & ACCESS RIGHTS	38.199 ha (94.39 AC)	0.923 ha (2.28 AC)	—	0.923 ha (2.28 AC)	37.276 ha (92.11 AC)	0.522 ha (1.29 AC)	—
17	4.6 - 4.8	MARATHON DISTRICT OF SAMOSET, BOYS SCOUTS OF AMERICA	T1 & ACCESS RIGHTS	13.699 ha (33.85 AC)	—	—	—	13.699 ha (33.85 AC)	0.252 ha (0.62 AC)	—
18	4.7 - 4.8	VILLAGE OF WESTON	FEE, PLE, T1 & ACCESS RIGHTS	6.244 ha (15.43 AC)	0.136 ha (0.34 AC)	—	0.136 ha (0.34 AC)	6.108 ha (15.09 AC)	0.359 ha (0.89 AC)	0.103 ha (0.25 AC)
19	4.8	JAMES IOZZO	T1 & ACCESS RIGHTS	0.377 ha (0.931 AC)	—	—	—	0.377 ha (0.931 AC)	0.060 ha (0.15 AC)	—
20	4.8	JAMES IOZZO	FEE	8.701 ha (21.50 AC)	0.065 ha (0.16 AC)	—	0.065 ha (0.16 AC)	8.636 ha (21.34 AC)	0.032 ha (0.08 AC)	—
21										
22	4.4 - 4.5	BETTY R. SCHEEL (n/k/a BETTY R. BESSETTE)	FEE	1.400 ha (3.46 AC)	0.526 ha (1.30 AC)	—	—	0.874 ha (2.16 AC)	—	—
23	4.4 - 4.5	THE ESTATE OF GLADYS ROLOFF	FEE	1.502 ha (3.71 AC)	0.146 ha (0.36 AC)	—	—	1.356 ha (3.35 AC)	—	—
24	4.5	LORENE K. ZILISCH	FEE	0.567 ha (1.40 AC)	0.157 ha (0.39 AC)	—	—	0.410 ha (1.01 AC)	—	—
25	4.5	FRED P. NOVAK	FEE	0.855 ha (2.11 AC)	0.147 ha (0.36 AC)	—	—	0.708 ha (1.75 AC)	—	—
26	4.5 - 4.6	FRED J. DEHNEL & DONNA M. DEHNEL	FEE	37.276 ha (92.11 AC)	0.788 ha (1.948 AC)	—	—	36.488 ha (90.162 AC)	—	—
27										
28										
29										
30										
31										
32										
33	4.3	WISCONSIN CENTRAL LIMITED RAILROAD	HIGHWAY EASEMENT	—	0.009 ha (0.02 AC)	0.061 ha (0.15 AC)	0.070 ha (0.17 AC)	—	—	—
34	4.3	WISCONSIN CENTRAL LIMITED RAILROAD	HIGHWAY EASEMENT	—	0.025 ha (0.06 AC)	—	0.025 ha (0.06 AC)	—	0.012 ha (0.03 AC)	—
35	4.4	WISCONSIN CENTRAL LIMITED RAILROAD	HIGHWAY EASEMENT	—	0.065 ha (0.16 AC)	0.080 ha (0.20 AC)	0.145 ha (0.36 AC)	—	—	—
36										
37	4.4	WISCONSIN PUBLIC SERVICE CORPORATION	RELEASE OF RIGHTS	—	—	—	—	—	—	—
38	4.4 - 4.5	WISCONSIN PUBLIC SERVICE CORPORATION	RELEASE OF RIGHTS	—	—	—	—	—	—	—
39	4.5	WISCONSIN PUBLIC SERVICE CORPORATION	RELEASE OF RIGHTS	—	—	—	—	—	—	—
40	4.5	WISCONSIN PUBLIC SERVICE CORPORATION	RELEASE OF RIGHTS	—	—	—	—	—	—	—
41	4.6	WISCONSIN PUBLIC SERVICE CORPORATION	RELEASE OF RIGHTS	—	—	—	—	—	—	—
42	4.7	WISCONSIN PUBLIC SERVICE CORPORATION	RELEASE OF RIGHTS	—	—	—	—	—	—	—
43	4.7	WISCONSIN PUBLIC SERVICE CORPORATION	RELEASE OF RIGHTS	—	—	—	—	—	—	—
44	4.8	WISCONSIN PUBLIC SERVICE CORPORATION	RELEASE OF RIGHTS	—	—	—	—	—	—	—



FOUND RAILROAD SPIKE
(STERNBERG AVE.)
Y = 119,645.417
X = 24,135.629

BEGIN RELOCATION ORDER
STA. 0+000=0"B"+500
Y = 120,041.348
X = 24,159.303

VILLAGE

OF

WESTON

REVISION DATE 10/02/01	DATE 6-10-99	SCALE, METERS 0 20 m 40 m	HWY: CAMP PHILLIPS ROAD COUNTY: MARATHON	FEDERAL PROJECT NO: STATE R/W PROJECT NO: 6676-03-01	SHEET NO: 4.3	M
---------------------------	-----------------	------------------------------	---	---	---------------	---

VILLAGE

OF

WESTON

NE/NE
SEC. 17

SE/SE
SEC. 8

THE ESTATE OF
GLADYS ROLOFF
C.S.M. 2112, VOL. 8 P. 196

EAU CLAIRE AVENUE
N 89°16'07" E
W 70°01'08" S

WISCONSIN CENTRAL LIMITED RAILROAD
PL.
S 55°37'30" W
PL.

PROPOSED FRONTAGE ROAD R.O.W.
BETTY R. SCHEEL (n/k/a BETTY R. BESSETTE)

FOUND PK NAIL
STA. 0+417.011, ON REF. LINE
Y= 120,457.616
X= 24,184.191

CHESTER J. CHEREK
MARY J. CHEREK

WISCONSIN PUBLIC SERVICE CORP.
EASEMENT 8151X, VOL. 83 P.320

1 A.P.
STA. 0+590
20 m MAX.

JAMES D. GREENHECK

Y=120439.888
X= 24163.646
N 34°59'59"W
8.962 m (29.40')

HOUSE
4016

HIGHWAY EASEMENT

HOUSE
4320

GAR.

156.444 m (513.14')
164.964 m (541.22')

Y= 120,467.355
X= 24,158.153
N 44°21'44" E
5.666 m (18.58')

Y=120,529.052
X=24,160.917
N 00°32'34"W
6.098 m (20.00')

Y=120,532.495
X=24,155.885
N 00°32'34"W
6.098 m (20.00')

Y=120,557.358
X=24,155.885
N 00°32'34"W
6.098 m (20.00')

Y=120,557.358
X=24,155.885
N 00°32'34"W
6.098 m (20.00')

Y=120,557.358
X=24,155.885
N 00°32'34"W
6.098 m (20.00')

N 03°25'18"E
0+360

Y= 120,492.266
X= 24,186.263
N 00°32'34"W
7.653 m (25.11')

Y=120,479.997
X=24,173.847
N 00°32'34"W
12.46 m (40.88')

Y=120,517.169
X=24,180.565
N 00°32'34"W
12.46 m (40.88')

Y=120,517.169
X=24,180.565
N 00°32'34"W
12.46 m (40.88')

Y=120,517.169
X=24,180.565
N 00°32'34"W
12.46 m (40.88')

Y=120,517.169
X=24,180.565
N 00°32'34"W
12.46 m (40.88')

0+337.000
10.06 m

Y=120,457.363
X=24,194.252
N 00°32'34"W
7.653 m (25.11')

Y=120,457.363
X=24,194.252
N 00°32'34"W
7.653 m (25.11')

Y=120,457.363
X=24,194.252
N 00°32'34"W
7.653 m (25.11')

Y=120,457.363
X=24,194.252
N 00°32'34"W
7.653 m (25.11')

Y=120,457.363
X=24,194.252
N 00°32'34"W
7.653 m (25.11')

Y=120,457.363
X=24,194.252
N 00°32'34"W
7.653 m (25.11')

1 A.P.
STA. 0+409
16 m MAX.

Y=120,457.363
X=24,194.252
N 00°32'34"W
7.653 m (25.11')

Y=120,457.363
X=24,194.252
N 00°32'34"W
7.653 m (25.11')

Y=120,457.363
X=24,194.252
N 00°32'34"W
7.653 m (25.11')

Y=120,457.363
X=24,194.252
N 00°32'34"W
7.653 m (25.11')

Y=120,457.363
X=24,194.252
N 00°32'34"W
7.653 m (25.11')

Y=120,457.363
X=24,194.252
N 00°32'34"W
7.653 m (25.11')

HOFFERS, INC

ARVILLA A. BENDER
C.S.M. 8531, VOL. 33 P. 99
PARCEL -1-

WISCONSIN PUBLIC SERVICE CORP.
EASEMENT 8151X, VOL. 83 P. 320

WISCONSIN PUBLIC SERVICE CORP.
EASEMENT 8266X, VOL. 90 P. 460

NW/NW
SEC. 16

SW/SW
SEC. 9

ROBERT C. GREENHECK
RUTH D. GREENHECK
(TRUSTEES)
THE GREENHECK FAMILY TRUST

HOUSE
4319

SHED

GAR.

BARN

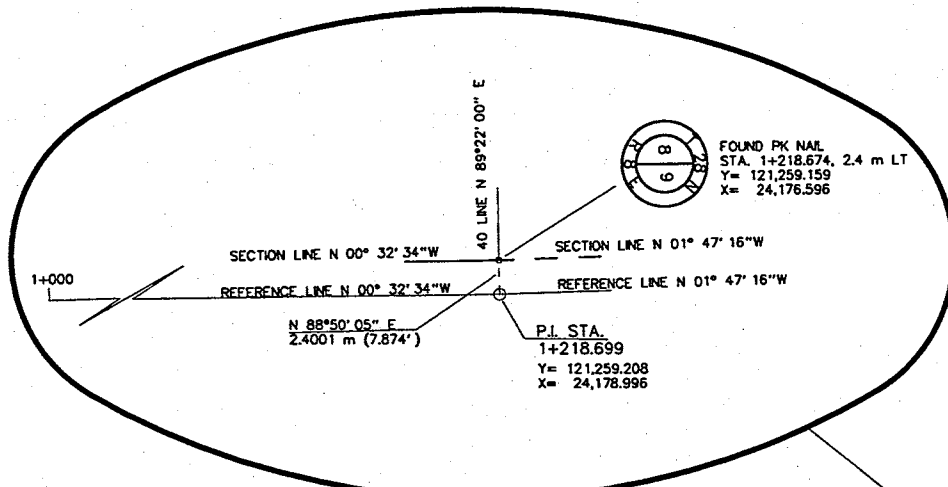
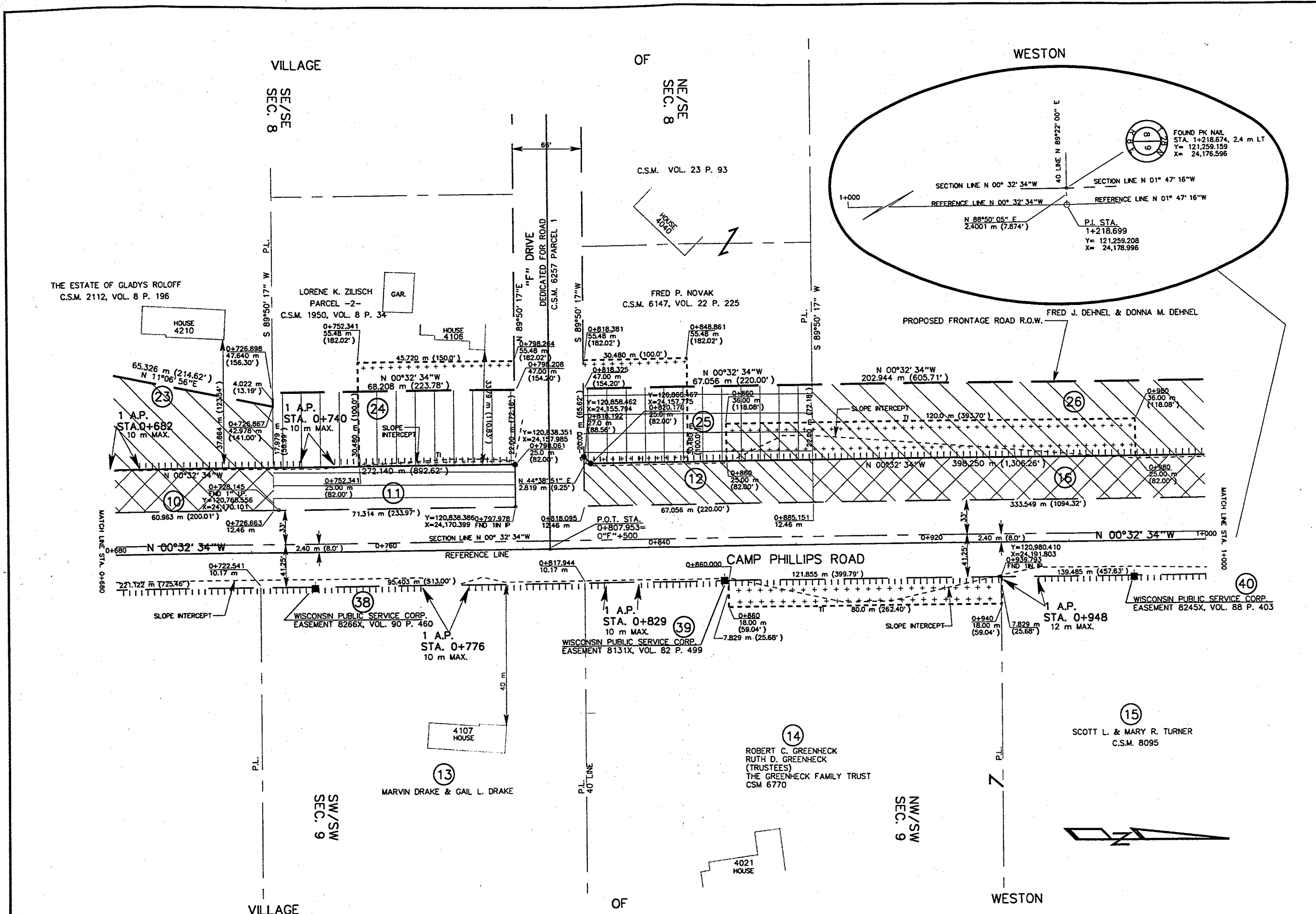
WESTON

OF

VILLAGE

compro2.S70

REVISION DATE 10/02/01	DATE 6-10-99	SCALE, METERS 0 20 m 40 m	HWY: CAMP PHILLIPS ROAD COUNTY: MARATHON	FEDERAL PROJECT NO: STATE R/W PROJECT NO: 6676-03-01	SHEET NO: 4.4	M
---------------------------	-----------------	------------------------------	---	---	---------------	---

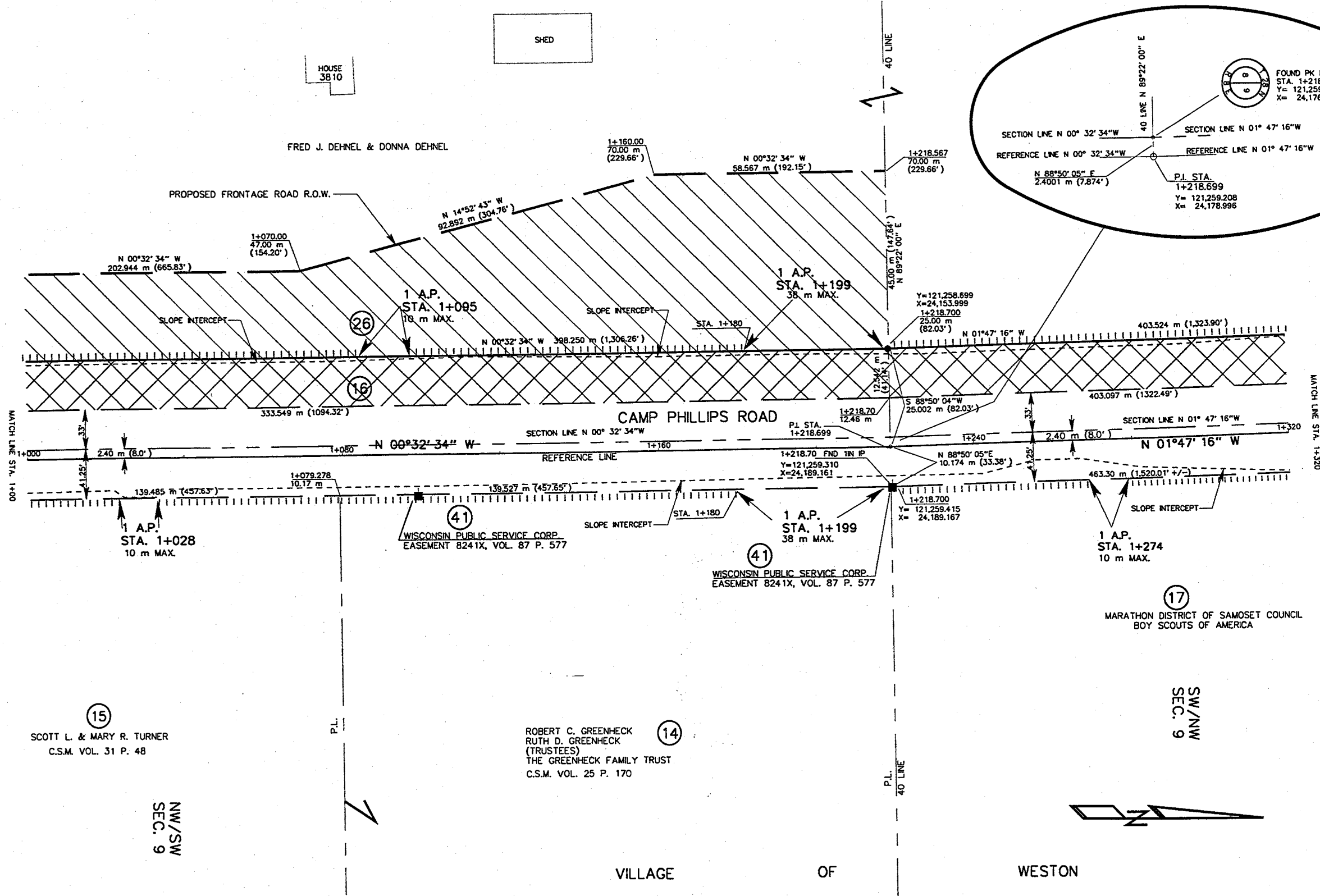


REVISION DATE 10/02/01	DATE 6-10-99	SCALE, METERS 0 20 m 40 m	HWY: CAMP PHILLIPS ROAD	FEDERAL PROJECT NO:	
	GRID FACTOR		COUNTY: MARATHON	STATE R/W PROJECT NO: 6676-03-01	SHEET NO: 4.5
					M

NE/SE
SEC. 8

VILLAGE OF WESTON

SE/NE
SEC. 8



MATCH LINE STA. 1+000

MATCH LINE STA. 1+320

15
SCOTT L. & MARY R. TURNER
C.S.M. VOL. 31 P. 48

14
ROBERT C. GREENHECK
RUTH D. GREENHECK
(TRUSTEES)
THE GREENHECK FAMILY TRUST
C.S.M. VOL. 25 P. 170

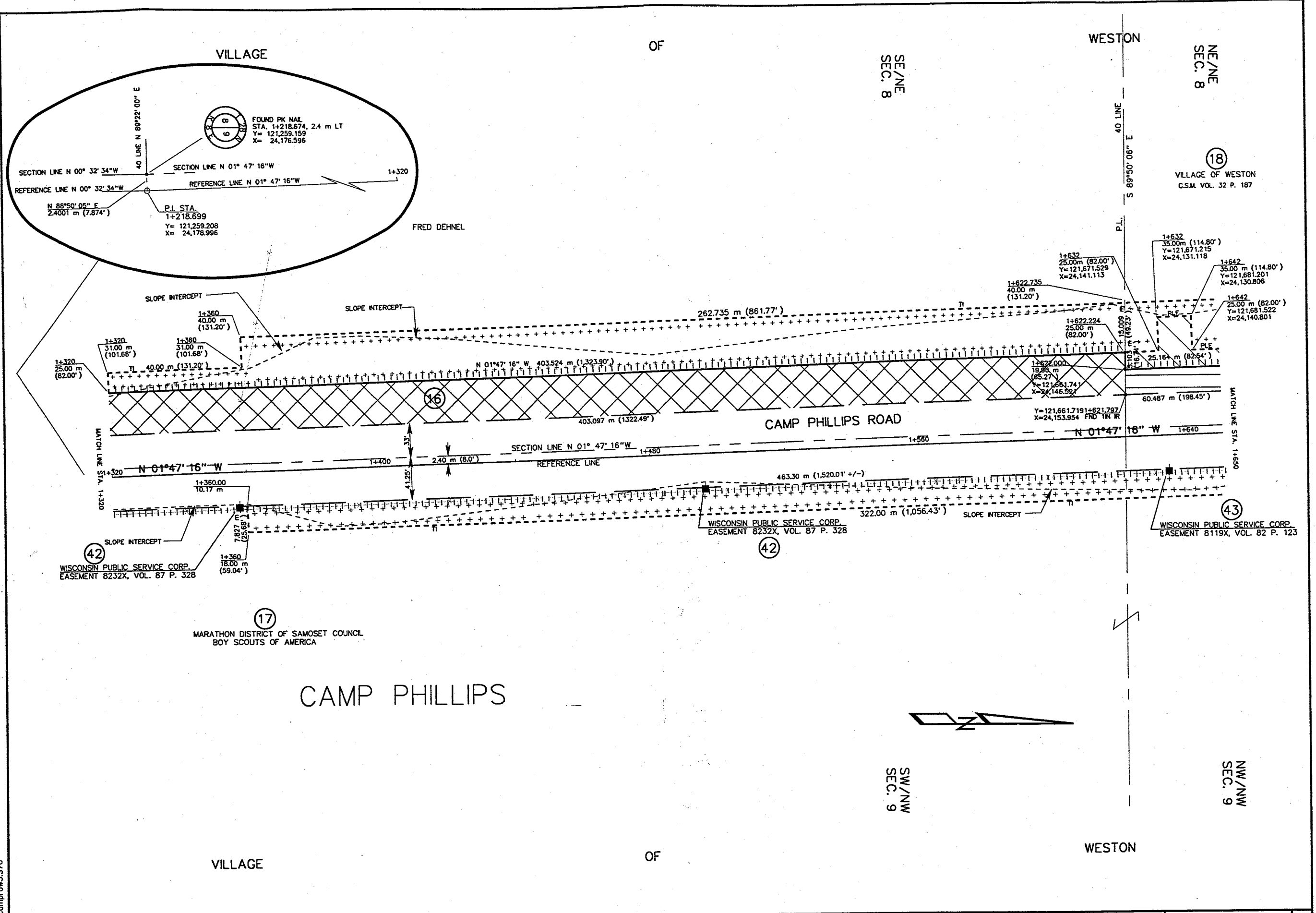
17
MARATHON DISTRICT OF SAMOSET COUNCIL
BOY SCOUTS OF AMERICA

SW/NW
SEC. 9



REVISION DATE 10/02/01	DATE 6-10-99	SCALE, METERS 0 20 m 40 m	HWY: CAMP PHILLIPS ROAD	FEDERAL PROJECT NO:	
	GRID FACTOR		COUNTY: MARATHON	STATE R/W PROJECT NO: 6676-03-01	SHEET NO: 4.6

M



camprow5.570

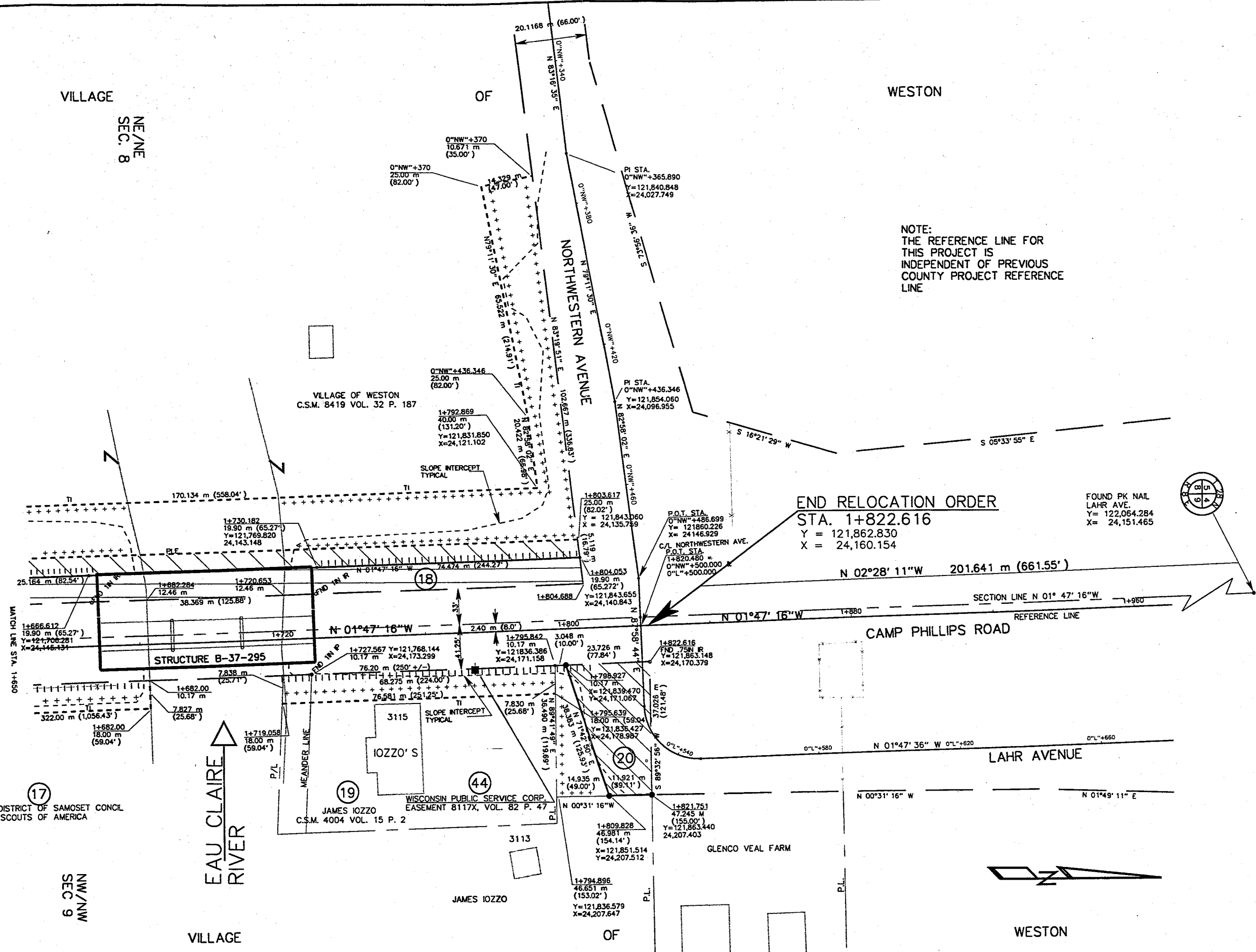
REVISION DATE 10/02/01	DATE 6-10-99	SCALE, METERS 0 20 m 40 m	HWY: CAMP PHILLIPS ROAD COUNTY: MARATHON	FEDERAL PROJECT NO: STATE R/W PROJECT NO: 6676-03-01	SHEET NO: 4.7	M
---------------------------	-----------------	------------------------------	---	---	---------------	---

VILLAGE
NE/NE
SEC. 8

OF

WESTON

NOTE:
THE REFERENCE LINE FOR
THIS PROJECT IS
INDEPENDENT OF PREVIOUS
COUNTY PROJECT REFERENCE
LINE



17
MARATHON DISTRICT OF SAMOSET CONCL
BOY SCOUTS OF AMERICA

NW/NW
SEC 9

VILLAGE
EAU CLAIRE
RIVER
OF
WESTON

REVISION DATE 10/02/01	DATE 6-10-99	SCALE, METERS 0 20 m 40 m	HWY: CAMP PHILLIPS ROAD COUNTY: MARATHON	FEDERAL PROJECT NO: STATE R/W PROJECT NO: 6676-03-01	SHEET NO: 4.8	M
---------------------------	-----------------	------------------------------	---	---	---------------	---