

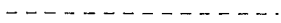


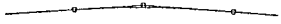
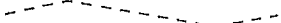
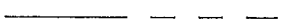
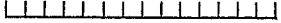


CONVENTIONAL SIGNS AND ABBREVIATIONS

- LIMITED HIGHWAY EASEMENT 
- PROPERTY LINE 
- LOT LINE 
- EXISTING RIGHT OF WAY 
- NEW RIGHT OF WAY 
- REFERENCE LINE 
- SLOPE INTERCEPT 
- SECTION LINE 
- NO ACCESS BY ACQUISITION 

- A.P. ACCESS POINT
- A.C. ACRE
- E EAST
- X EAST GRID COORDINATE
- FND FOUND
- GAR GARAGE
- ha HECACRE
- km KILOMETER
- m METER
- N NORTH
- Y NORTH GRID COORDINATE
- P PAGE
- PLE PERMANANT LIMITED EASEMENT
- P/L PROPERTY LINE
- P.I. POINT OF INTERSECTION
- P.O.T. POINT ON TANGENT
- R RANGE
- RT RIGHT
- R/W RIGHT OF WAY
- SEC SECTION
- S SOUTH
- SF SQUARE FOOT
- sm SQUARE METER
- STA STATION
- TEMP TEMPORARY
- TI TEMPORARY INTEREST EASEMENT
- T TOWN
- VOL VOLUME
- W WEST

NO ACCESS BY PREVIOUS ACQUISITION



SECTION CORNER



TEMPORARY INTEREST EASEMENT 

SET 3/4" X 24" IRON ROD WEIGHING 1.50 LBS/LIN. FT.

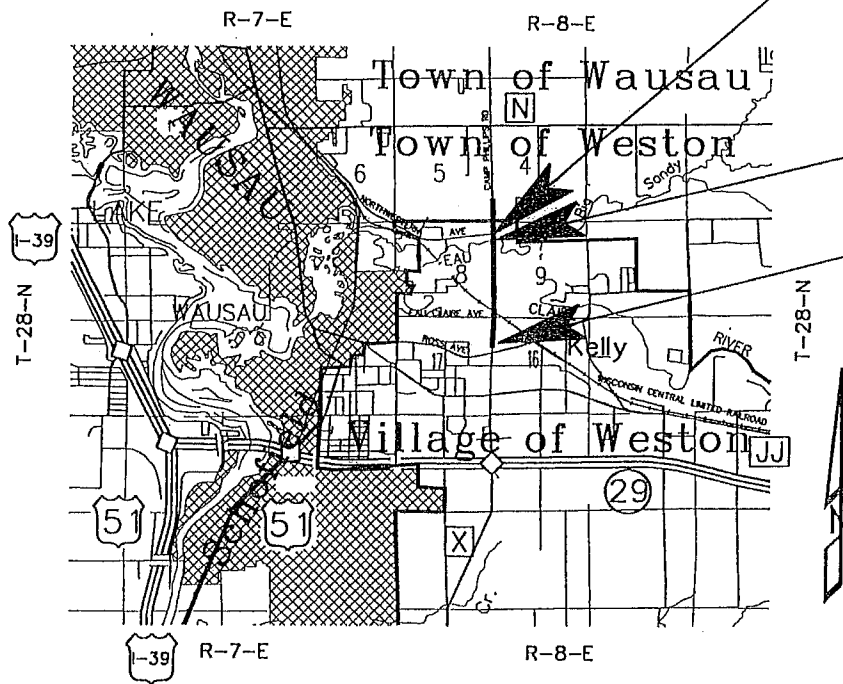
END RELOCATION ORDER

PROJECT 6676-03-01
 STA. 1+822.616
 201.45 m SOUTH AND 8.90 m EAST OF THE S/W CORNER OF SEC. 4, T28N, R8E
 PROJECT COORDINATES
 Y = 121,862.830
 X = 24,160.154

STRUCTURE B-37-295

BEGIN RELOCATION ORDER

PROJECT 6676-03-01
 STA. 0+000
 395.93 m NORTH AND 23.67 m EAST OF THE WEST 1/4 CORNER OF SEC. 16, T28N, R8E
 STATE PLANE COORDINATES (METERS) PROJECT COORDINATES (METERS)
 Y = 120,068.57 EQUALS Y = 120,041.348
 X = 643,367.85 EQUALS X = 24,159.303



NOTES:

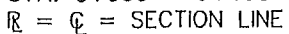
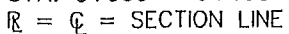
STATE PLANE COORDINATES WERE SCALED FROM U.S.G.S. TOPOGRAPHIC MAP "WAUSAU EAST, WISCONSIN" QUADRANGLE, FOR IDENTIFICATION ONLY.

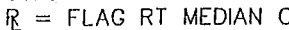
PROJECT COORDINATES WERE TRANSFERRED FROM THE FOTH & VAN DYKE REPORT, EASTERN ARTERIAL, (CAMP PHILLIPS ROAD - 41 ST STREET) RIGHT-OF-WAY DETERMINATION, SCOPE ID : 91M34.

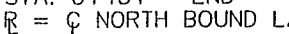
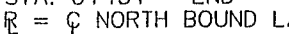
THE N.E. CORNER OF SEC. 17, T28N, R8E SET AS Y= 395,201.36 FT., X= 2,079,344.30 FT., X 2,000,000 FT. WAS DROPPED FOR EASE OF HANDLING.

METRIC CONVERSION, Y=120,457.616 m, X=24,184.191 m

RIGHT OF WAY BOUNDARIES ARE REFERENCED TO THE U.S. PUBLIC LAND SURVEY.

STA. 0+000 - 0+100
 =  = SECTION LINE

STA. 0+180 - 0+417
 = FLAG RT MEDIAN C&G = SECTION LINE

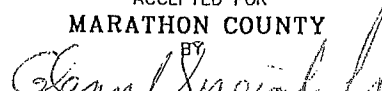
STA. 0+451 - END
 =  NORTH BOUND LANES

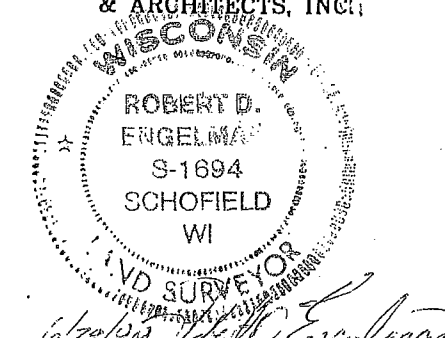
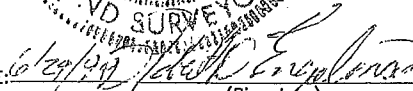
LAYOUT
 0 1.6 km



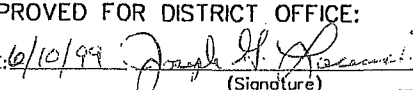
TOTAL NET LENGTH OF CENTERLINE = 1.823 km URBAN

R/W PROJECT NUMBER 6676-03-01	SHEET NUMBER 4.0	TOTAL SHEETS 9
FEDERAL PROJECT NUMBER		
PLAT OF RIGHT OF WAY REQUIRED FOR CAMP PHILLIPS ROAD (ROSS AVENUE TO NORTHWESTERN AVENUE)		
CAMP PHILLIPS ROAD		MARATHON COUNTY

ACCEPTED FOR
 MARATHON COUNTY
 BY

 DATE: 10/20/09
 (GLENN SPEICH, HIGHWAY COMMISSIONER)

ORIGINAL PLANS PREPARED BY
 CENTRAL WISCONSIN ENGINEERS
 & ARCHITECTS, INC.

 ROBERT D. ENGELMA
 S-1694
 SCHOFIELD
 WI
 LAND SURVEYOR
 DATE: 10/20/09

 (Signature)

REVISION DATE:
 10/02/01 12/09/09
 8/20/09
 9/22/09
 9/25/09

STATE OF WISCONSIN
 DEPARTMENT OF TRANSPORTATION
 APPROVED FOR DISTRICT OFFICE:
 DATE: 10/10/09

 (Signature)



SCHEDULE OF LANDS & INTERESTS REQUIRED

AREAS SHOWN IN THE TOTAL ACRES COLUMN MAY BE APPROXIMATE AND ARE DERIVED FROM TAX ROLLS OR OTHER AVAILABLE SOURCES AND MAY NOT INCLUDE LANDS OF THE OWNER WHICH ARE NOT CONTIGUOUS TO THE AREA TO BE ACQUIRED.

PARCEL NUMBER	SHEET NUMBER	OWNER(S)	INTEREST REQUIRED	TOTAL AREA	NEW	R/W AREA REQ'D. OR EXISTING	TOTAL	TOTAL AREA REMAINING	T.I. AREA	P.L.E. AREA
1	4.3	JEAN A. KRUNCOS REVOCABLE TRUST	FEE, TI & ACCESS RIGHTS	0.971 ha (2.40 AC)	0.005 ha (0.01 AC)	---	0.005 ha (0.01 AC)	0.966 ha (2.39 AC)	0.027 ha (0.07 AC)	---
2	4.3	G & B PRODUCE, INC	PLE, TI & ACCESS RIGHTS	4.719 ha (11.66 AC)	---	---	---	---	0.059 ha (0.15 AC)	0.044 ha (0.12 AC)
3	4.3	ROBERT LOESEL	FEE, TI & ACCESS RIGHTS	2.007 ha (4.96 AC)	0.044 ha (0.11 AC)	---	0.044 ha (0.11 AC)	1.963 ha (4.85 AC)	0.062 ha (0.15 AC)	---
4	4.3 - 4.4	JAMES D. GREENHECK	FEE, PLE, TI & ACCESS RIGHTS	4.264 ha (10.536 AC)	0.157 ha (0.39 AC)	---	0.157 ha (0.39 AC)	4.107 ha (10.146 AC)	0.040 ha (0.10 AC)	0.030 ha (0.07 AC)
5	4.3	RICHARD BENDER	FEE, TI & ACCESS RIGHTS	3.476 ha (8.589 AC)	0.033 ha (0.082 AC)	---	0.033 ha (0.082 AC)	3.443 ha (8.507 AC)	0.036 ha (0.089 AC)	---
6	4.3 - 4.4	ARVILLA A. BENDER	FEE, TI & ACCESS RIGHTS	0.871 ha (2.152 AC)	0.014 ha (0.035 AC)	---	0.014 ha (0.035 AC)	0.857 ha (2.12 AC)	0.157 ha (0.388 AC)	---
7	4.4	CHESTER J. CHEREK & MARY J. CHEREK	FEE & ACCESS RIGHTS	1.012 ha (2.50 AC)	0.067 ha (0.17 AC)	---	0.067 ha (0.17 AC)	0.945 ha (2.33 AC)	---	---
8	4.4	BETTY R. SCHEEL (n/k/a BETTY R. BESSETTE)	FEE, PLE & ACCESS RIGHTS	1.582 ha (3.91 AC)	0.181 ha (0.45 AC)	---	0.181 ha (0.45 AC)	1.400 ha (3.46 AC)	---	0.017 ha (0.04 AC)
9	4.4 - 4.5	ROBERT C. & RUTH D. GREENHECK (TRUSTEES) THE GREENHECK FAMILY TRUST	PLE & ACCESS RIGHTS	13.497 ha (33.35 AC)	---	---	---	13.497 ha (33.35 AC)	---	0.177 ha (0.44 AC)
10	4.4 - 4.5	THE ESTATE OF GLADYS ROLOFF	FEE & ACCESS RIGHTS	1.578 ha (3.90 ac)	0.076 ha (0.19 AC)	---	0.076 ha (0.19 AC)	1.502 ha (3.71 AC)	---	---
11	4.5	LORENE K. ZILISCH	FEE, TI & ACCESS RIGHTS	0.652 ha (1.61 AC)	0.089 ha (0.22 AC)	---	0.089 ha (0.22 AC)	0.563 ha (1.39 AC)	0.139 ha (0.34 AC)	---
12	4.5	FRED NOVAK	FEE, TI & ACCESS RIGHTS	0.939 ha (2.32 AC)	0.084 ha (0.21 AC)	---	0.084 ha (0.21 AC)	0.855 ha (2.11 AC)	0.121 ha (0.30 AC)	---
13	4.5	MARVIN E. DRAKE & GAIL L. DRAKE	ACCESS RIGHTS	1.821 ha (4.50 AC)	---	---	---	1.821 ha (4.50 AC)	---	---
14	4.5 - 4.6	ROBERT C. & RUTH D. GREENHECK (TRUSTEES) THE GREENHECK FAMILY TRUST	TI & ACCESS RIGHTS	37.693 ha (93.14 AC)	---	---	---	37.693 ha (93.14 AC)	0.063 ha (0.16 AC)	---
15	4.5 - 4.6	SCOTT L. & MARY R. TURNER	ACCESS RIGHTS	5.325 ha (13.16 AC)	---	---	---	5.326 ha (13.16 AC)	---	---
16	4.5 - 4.7	FRED J. DEHNEL & DONNA M. DEHNEL	FEE, TI & ACCESS RIGHTS	38.199 ha (94.39 AC)	0.923 ha (2.28 AC)	---	0.923 ha (2.28 AC)	37.276 ha (92.11 AC)	0.522 ha (1.29 AC)	---
17	4.6 - 4.8	MARATHON DISTRICT OF SAMOSET, BOYS SCOUTS OF AMERICA	FEE & ACCESS RIGHTS	13.699 ha (33.85 AC)	---	---	---	13.699 ha (33.85 AC)	0.252 ha (0.62 AC)	---
18	4.7 - 4.8	VILLAGE OF WESTON	FEE & ACCESS RIGHTS	6.244 ha (15.43 AC)	0.136 ha (0.34 AC)	---	0.136 ha (0.34 AC)	6.108 ha (15.09 AC)	---	---
19	4.8	JAMES IOZZO	TI & ACCESS RIGHTS	0.377 ha (0.931 AC)	---	---	---	0.377 ha (0.931 AC)	0.060 ha (0.15 AC)	---
20	4.8	JAMES IOZZO	FEE	8.701 ha (21.50 AC)	0.065 ha (0.16 AC)	---	0.065 ha (0.16 AC)	8.636 ha (21.34 AC)	0.032 ha (0.08 AC)	---
21										
22	4.4 - 4.5	BETTY R. SCHEEL (n/k/a BETTY R. BESSETTE)	FEE	1.400 ha (3.46 AC)	0.526 ha (1.30 AC)	---	---	0.874 ha (2.16 AC)	---	---
23	4.4 - 4.5	THE ESTATE OF GLADYS ROLOFF	FEE	1.502 ha (3.71 AC)	0.146 ha (0.36 AC)	---	---	1.363 ha (3.35 AC)	---	---
24	4.5	LORENE K. ZILISCH	FEE	0.567 ha (1.40 AC)	0.157 ha (0.39 AC)	---	---	0.410 ha (1.01 AC)	---	---
25	4.5	FRED NOVAK	FEE	0.855 ha (2.11 AC)	0.147 ha (0.36 AC)	---	---	0.708 ha (1.75 AC)	---	---
26	4.5 - 4.6	FRED J. DEHNEL & DONNA M. DEHNEL	FEE & TI & ACCESS RIGHTS	37.276 ha (92.11 AC)	0.788 ha (1.95 AC)	---	---	36.684 ha (90.16 AC)	---	---
27	4.5	JOSEPH J. & MARGARET L. JORDAN	FEE	2.565 ha (6.34 AC)	0.171 ha (0.07 AC)	---	0.171 ha (0.070 AC)	2.394 ha (6.27 AC)	---	---
28	4.7	FRED J. DEHNEL & DONNA M. DEHNEL	FEE	38.199 ha (94.39 AC)	0.417 ha (1.03 AC)	---	0.417 ha (1.03 AC)	37.782 ha (93.36 AC)	---	---
29	4.7 - 4.8	VILLAGE OF WESTON	FEE	6.244 ha (15.43 AC)	0.2622 ha (0.65 AC)	---	0.2622 ha (0.65 AC)	5.982 ha (14.78 AC)	---	---
30	4.7 - 4.8	MARATHON DISTRICT OF SAMOSET, BOYS SCOUTS OF AMERICA	FEE	13.699 ha (33.85 AC)	0.252 ha (0.62 AC)	---	0.252 ha (0.62 AC)	13.447 ha (33.23 AC)	---	---
31										
32										
33	4.3	WISCONSIN CENTRAL LIMITED RAILROAD	HIGHWAY EASEMENT	---	0.009 ha (0.02 AC)	0.061 ha (0.15 AC)	0.070 ha (0.17 AC)	---	---	---
34	4.3	WISCONSIN CENTRAL LIMITED RAILROAD	HIGHWAY EASEMENT	---	0.025 ha (0.06 AC)	---	0.025 ha (0.06 AC)	---	0.012 ha (0.03 AC)	---
35	4.4	WISCONSIN CENTRAL LIMITED RAILROAD	HIGHWAY EASEMENT	---	0.065 ha (0.16 AC)	0.080 ha (0.20 AC)	0.145 ha (0.36 AC)	---	---	---
36										
37	4.4	WISCONSIN CENTRAL LIMITED RAILROAD	HIGHWAY EASEMENT	---	---	---	0.11 AC/0.005 ha	---	---	---
38	4.4 - 4.5	WISCONSIN PUBLIC SERVICE CORPORATION	RELEASE OF RIGHTS	---	---	---	---	---	---	---
39	4.5	WISCONSIN PUBLIC SERVICE CORPORATION	RELEASE OF RIGHTS	---	---	---	---	---	---	---
40	4.5	WISCONSIN PUBLIC SERVICE CORPORATION	RELEASE OF RIGHTS	---	---	---	---	---	---	---
41	4.6	WISCONSIN PUBLIC SERVICE CORPORATION	RELEASE OF RIGHTS	---	---	---	---	---	---	---
42	4.7	WISCONSIN PUBLIC SERVICE CORPORATION	RELEASE OF RIGHTS	---	---	---	---	---	---	---
43	4.7	WISCONSIN PUBLIC SERVICE CORPORATION	RELEASE OF RIGHTS	---	---	---	---	---	---	---
44	4.8	WISCONSIN PUBLIC SERVICE CORPORATION	RELEASE OF RIGHTS	---	---	---	---	---	---	---

REVISION DATE	10/02/01 9/22/09	DATE	6-10-99	SCALE, METERS		HWY: CAMP PHILLIPS ROAD	FEDERAL PROJECT NO:		
	8/20/09 12/09/09	GRID FACTOR				COUNTY: MARATHON	STATE R/W PROJECT NO: 6676-03-01	SHEET NO: 4.1	M

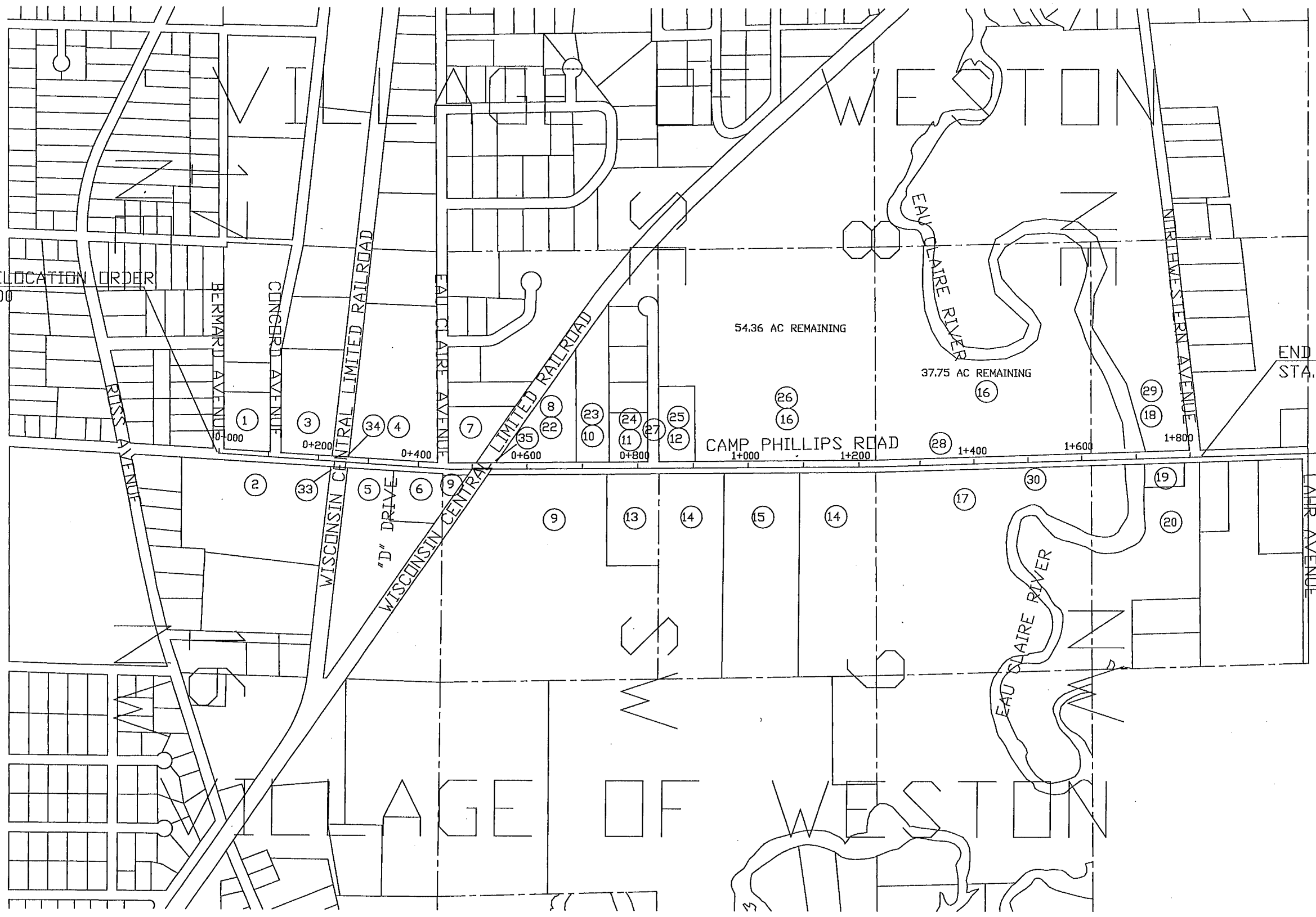
T 28 N

TOWN OF WESTON

R
8
E

BEGIN RELOCATION ORDER
STA. 0+000

END RELOCATION ORDER
STA. 1+822.616



REVISION DATE
10/02/01
8/20/09

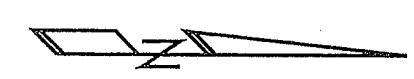
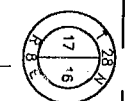
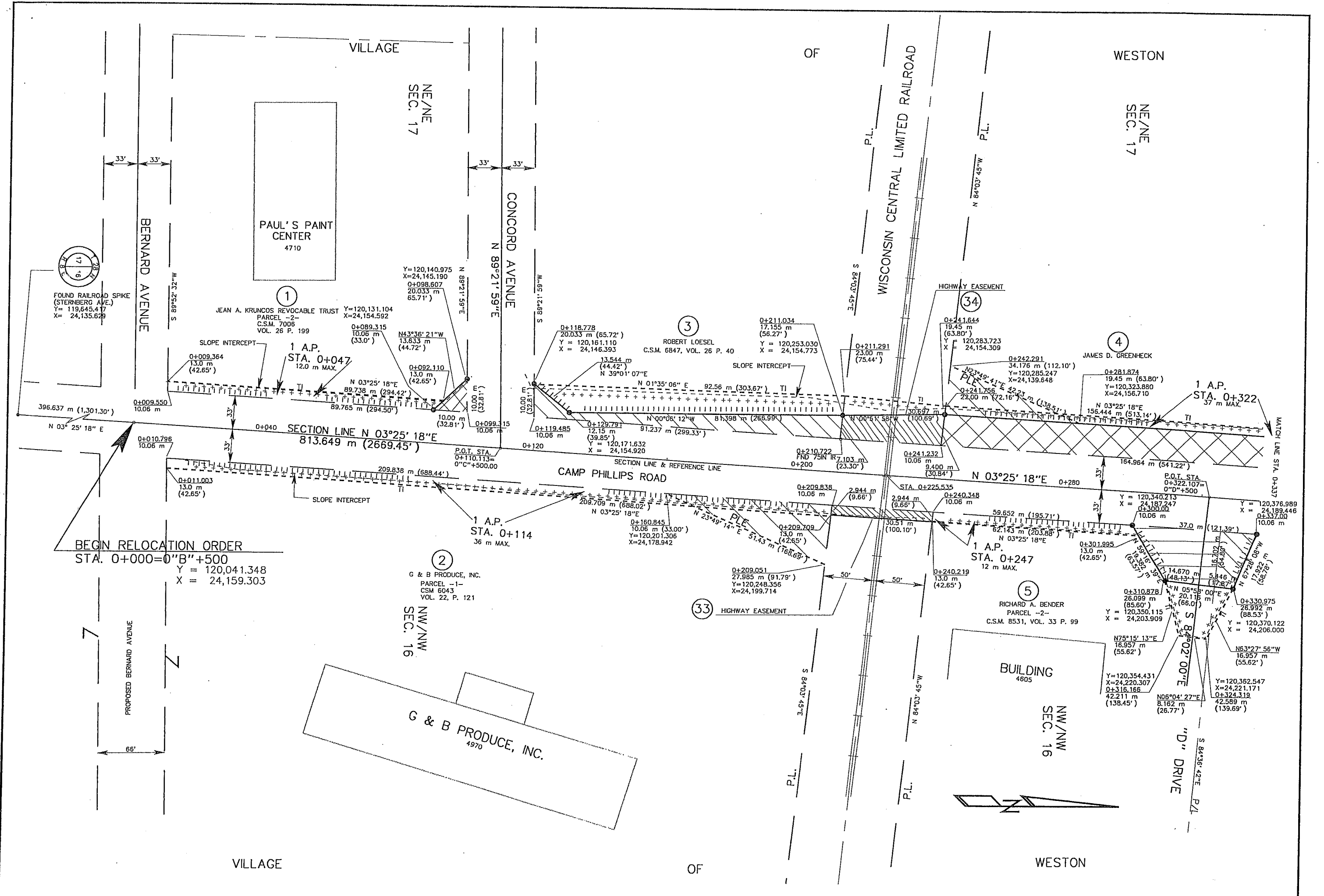
DATE 6-10-99
GRID FACTOR

NOT TO SCALE

HWY: CAMP PHILLIPS ROAD
COUNTY: MARATHON

FEDERAL PROJECT NO:
STATE R/W PROJECT NO: 6676-03-01

SHEET NO: 4.2 M



REVISION DATE 10/02/01	DATE 6-10-99	SCALE, METERS 0 20 m 40 m	HWY: CAMP PHILLIPS ROAD	FEDERAL PROJECT NO:	
	GRID FACTOR		COUNTY: MARATHON	STATE R/W PROJECT NO: 6676-03-01	SHEET NO: 4.3

VILLAGE

OF

WESTON

NE/NE
SEC. 17

SE/SE
SEC. 8

THE ESTATE OF
GLADYS ROLOFF
C.S.M. 2112, VOL. 8 P. 196

EAU CLAIRE AVENUE

WISCONSIN CENTRAL LIMITED RAILROAD

PROPOSED FRONTAGE ROAD R.O.W.
BETTY R. SCHEEL (n/k/a BETTY R. BESSETTE)

FOUND PK NAIL
STA. 0+417.011, ON REF. LINE
Y= 120,457.616
X= 24,184.191

7
CHESTER J. CHEREK
MARY J. CHEREK

WISCONSIN PUBLIC SERVICE CORP.
EASEMENT 8151X, VOL. 83 P.320

37

35
HIGHWAY EASEMENT

22

1 A.P.
STA. 0+590
20 m MAX.

4320
HOUSE

GAR.

23

10

4
JAMES D. GREENHECK

Y=120439.888
X= 24163.646
0+398.089
19.45 m (63.80')

N 34°59' 59"W
8.962 m (29.40')

Y = 120,447.229
X = 24,158.506
0+405.110
25.019 m (82.08')

Y = 120,467.355
X = 24,159.153
0+425.239
25.575 m (83.89')

Y = 120,529.052
X = 24,160.917
0+488.749
25 m (82.02')

Y = 120,532.495
X = 24,155.885
0+492.239
30.00 m (98.40')

Y = 120,569.666
X = 24,155.533
0+529.411
30.00 m (98.40')

Y = 120,533.351
X = 24,155.533
0+537.359
25.00 m (82.00')

0+665.70
67.00 m (219.82')

0+665.99
55.540 m (182.22')

0+665.70
67.00 m (219.82')

0+665.70
67.00 m (219.82')

0+665.70
67.00 m (219.82')

0+665.70
67.00 m (219.82')

0+665.70
67.00 m (219.82')

0+665.70
67.00 m (219.82')

0+665.70
67.00 m (219.82')

0+665.70
67.00 m (219.82')

0+665.70
67.00 m (219.82')

0+665.70
67.00 m (219.82')

0+665.70
67.00 m (219.82')

0+665.70
67.00 m (219.82')

0+665.70
67.00 m (219.82')

0+665.70
67.00 m (219.82')

0+665.70
67.00 m (219.82')

0+665.70
67.00 m (219.82')

0+665.70
67.00 m (219.82')

0+665.70
67.00 m (219.82')

0+665.70
67.00 m (219.82')

0+665.70
67.00 m (219.82')

0+665.70
67.00 m (219.82')

SLOPE INTERCEPT

156.444 m (513.14')

164.964 m (541.22')

0+360

0+337.000
10.06 m

0+334.090
18.00 m (59.06')

0+383
18.00 m (59.06')

0+383
43.727 m (143.46')

0+383
43.727 m (143.46')

0+383
43.727 m (143.46')

0+383
43.727 m (143.46')

0+383
43.727 m (143.46')

0+383
43.727 m (143.46')

0+383
43.727 m (143.46')

0+383
43.727 m (143.46')

0+383
43.727 m (143.46')

0+383
43.727 m (143.46')

0+383
43.727 m (143.46')

0+383
43.727 m (143.46')

0+383
43.727 m (143.46')

0+406.196
10.06 m

0+417.359
10.06 m

0+417.359
10.06 m

0+417.359
10.06 m

0+417.359
10.06 m

0+417.359
10.06 m

0+417.359
10.06 m

0+417.359
10.06 m

0+417.359
10.06 m

0+417.359
10.06 m

0+417.359
10.06 m

0+417.359
10.06 m

0+417.359
10.06 m

0+417.359
10.06 m

0+417.359
10.06 m

0+417.359
10.06 m

0+417.359
10.06 m

0+426.317
10.728 m (35.20')

0+426.317
10.728 m (35.20')

0+426.317
10.728 m (35.20')

0+426.317
10.728 m (35.20')

0+426.317
10.728 m (35.20')

0+426.317
10.728 m (35.20')

0+426.317
10.728 m (35.20')

0+426.317
10.728 m (35.20')

0+426.317
10.728 m (35.20')

0+426.317
10.728 m (35.20')

0+426.317
10.728 m (35.20')

0+426.317
10.728 m (35.20')

0+426.317
10.728 m (35.20')

0+426.317
10.728 m (35.20')

0+426.317
10.728 m (35.20')

0+426.317
10.728 m (35.20')

0+426.317
10.728 m (35.20')

0+426.317
10.728 m (35.20')

0+426.317
10.728 m (35.20')

0+426.317
10.728 m (35.20')

0+426.317
10.728 m (35.20')

0+426.317
10.728 m (35.20')

0+426.317
10.728 m (35.20')

0+426.317
10.728 m (35.20')

0+426.317
10.728 m (35.20')

0+426.317
10.728 m (35.20')

0+426.317
10.728 m (35.20')

0+426.317
10.728 m (35.20')

0+426.317
10.728 m (35.20')

0+426.317
10.728 m (35.20')

0+426.317
10.728 m (35.20')

0+426.317
10.728 m (35.20')

0+426.317
10.728 m (35.20')

0+426.317
10.728 m (35.20')

0+426.317
10.728 m (35.20')

0+426.317
10.728 m (35.20')

0+426.317
10.728 m (35.20')

0+426.317
10.728 m (35.20')

0+426.317
10.728 m (35.20')

0+426.317
10.728 m (35.20')

0+426.317
10.728 m (35.20')

0+426.317
10.728 m (35.20')

0+426.317
10.728 m (35.20')

0+426.317
10.728 m (35.20')

0+426.317
10.728 m (35.20')

0+426.317
10.728 m (35.20')

0+426.317
10.728 m (35.20')

0+426.317
10.728 m (35.20')

0+426.317
10.728 m (35.20')

0+426.317
10.728 m (35.20')

0+426.317
10.728 m (35.20')

0+426.317
10.728 m (35.20')

0+426.317
10.728 m (35.20')

0+426.317
10.728 m (35.20')

0+426.317
10.728 m (35.20')

0+426.317
10.728 m (35.20')

0+426.317
10.728 m (35.20')

0+426.317
10.728 m (35.20')

0+426.317
10.728 m (35.20')

0+426.317
10.728 m (35.20')

0+426.317
10.728 m (35.20')

0+426.317
10.728 m (35.20')

0+426.317
10.728 m (35.20')

0+426.317
10.728 m (35.20')

0+426.317
10.728 m (35.20')

0+426.317
10.728 m (35.20')

0+426.317
10.728 m (35.20')

0+426.317
10.728 m (35.20')

0+426.317
10.728 m (35.20')

0+426.317
10.728 m (35.20')

0+426.317
10.728 m (35.20')

0+426.317
10.728 m (35.20')

0+426.317
10.728 m (35.20')

0+426.317
10.728 m (35.20')

0+426.317
10.728 m (35.20')

0+426.317
10.728 m (35.20')

0+426.317
10.728 m (35.20')

0+426.317
10.728 m (35.20')

0+426.317
10.728 m (35.20')

0+426.317
10.728 m (35.20')

0+426.317
10.728 m (35.20')

0+426.317
10.728 m (35.20')

0+426.317
10.728 m (35.20')

0+426.317
10.728 m (35.20')

0+426.317
10.728 m (35.20')

0+426.317
10.728 m (35.20')

0+426.317
10.728 m (35.20')

0+426.317
10.728 m (35.20')

0+426.317
10.728 m (35.20')

0+426.317
10.728 m (35.20')

0+426.317
10.728 m (35.20')

0+426.317
10.728 m (35.20')

0+426.317
10.728 m (35.20')

0+426.317
10.728 m (35.20')

0+426.317
10.728 m (35.20')

0+426.317
10.728 m (35.20')

0+426.317
10.728 m (35.20')

0+426.317
10.728 m (35.20')

0+426.317
10.728 m (35.20')

0+426.317
10.728 m (35.20')

0+426.317
10.728 m (35.20')

0+426.317
10.728 m (35.20')

0+426.317
10.728 m (35.20')

0+426.317
10.728 m (35.20')

0+426.317
10.728 m (35.20')

0+426.317
10.728 m (35.20')

0+426.317
10.728 m (35.20')

0+426.317
10.728 m (35.20')

0+426.317
10.728 m (35.20')

0+426.317
10.728 m (35.20')

0+426.317
10.728 m (35.20')

0+426.317
10.728 m (35.20')

0+426.317
10.728 m (35.20')

0+426.317
10.728 m (35.20')

0+426.317
10.728 m (35.20')

0+426.317
10.728 m (35.20')

0+426.317
10.728 m (35.20')

0+426.317
10.728 m (35.20')

0+426.317
10.728 m (35.20')

0+426.317
10.728 m (35.20')

0+426.317
10.728 m (35.20')

0+426.317
10.728 m (35.20')

0+426.317
10.728 m (35.20')

0+426.317
10.728 m (35.20')

0+426.317
10.728 m (35.20')

0+426.317
10.728 m (35.20')

0+426.317
10.728 m (35.20')

0+426.317
10.728 m (35.20')

0+426.317
10.728 m (35.20')

0+426.3

NE/SE
SEC. 8

VILLAGE OF WESTON

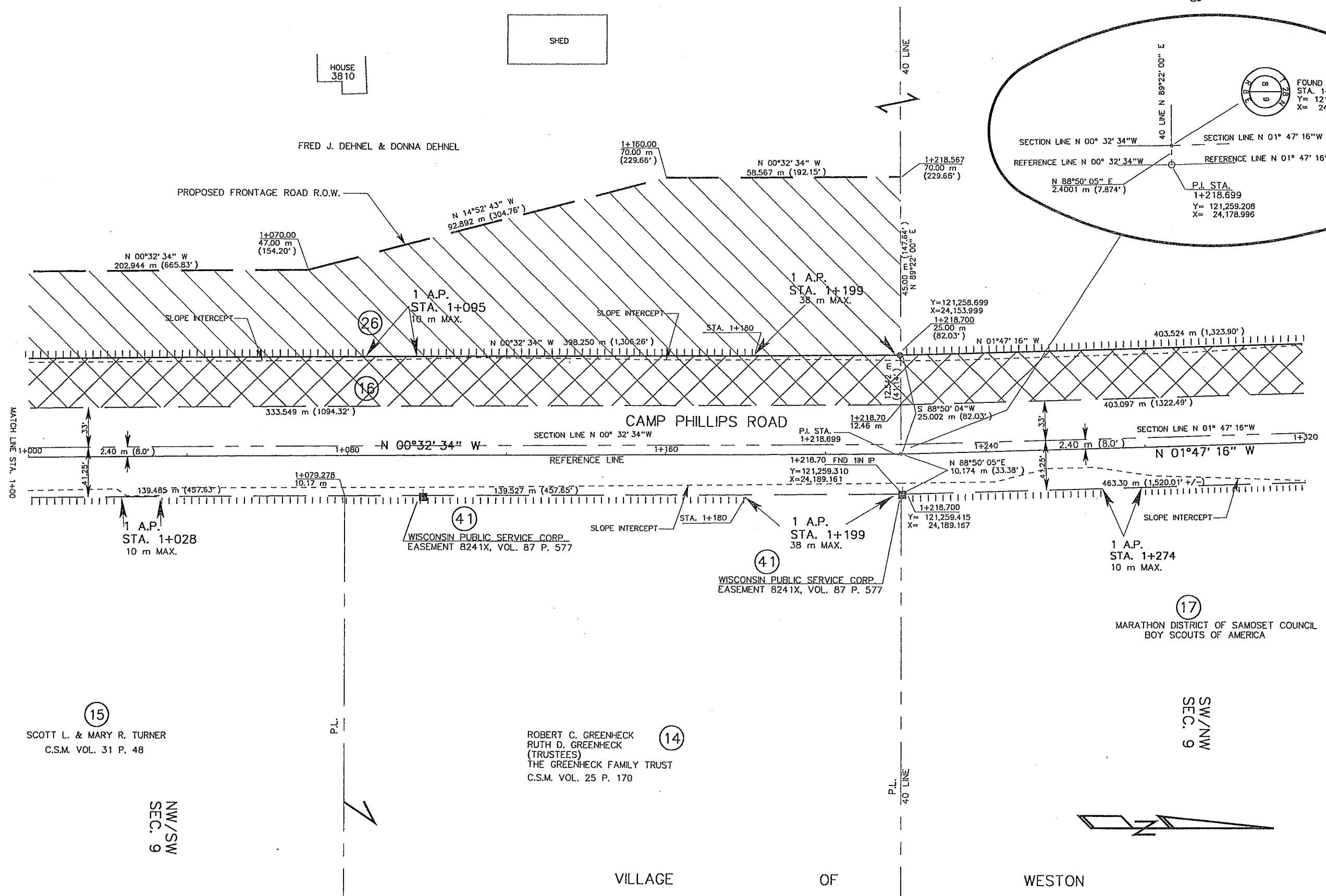
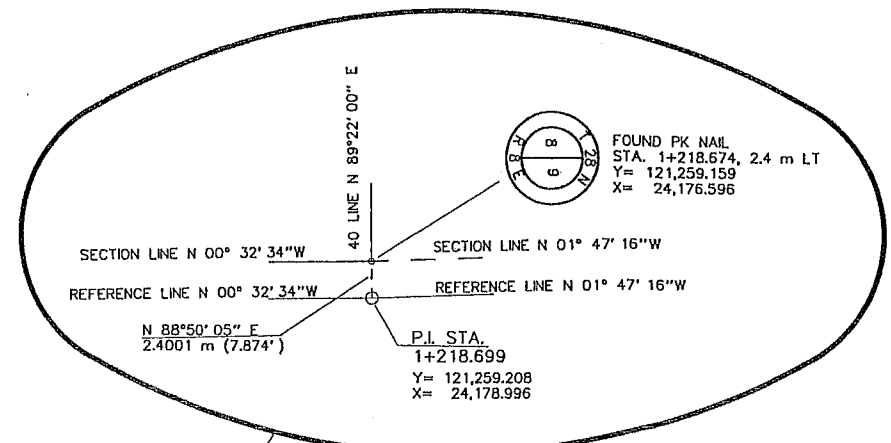
SE/NE
SEC. 8

SHED

SHED

HOUSE
3810

FRED J. DEHNEL & DONNA DEHNEL



REVISION DATE 10/02/01	DATE 6-10-99	SCALE, METERS 0 20 m 40 m	HWY: CAMP PHILLIPS ROAD COUNTY: MARATHON	FEDERAL PROJECT NO: STATE R/W PROJECT NO: 6676-03-01	SHEET NO: 4.6	M
---------------------------	-----------------	------------------------------	---	---	---------------	---

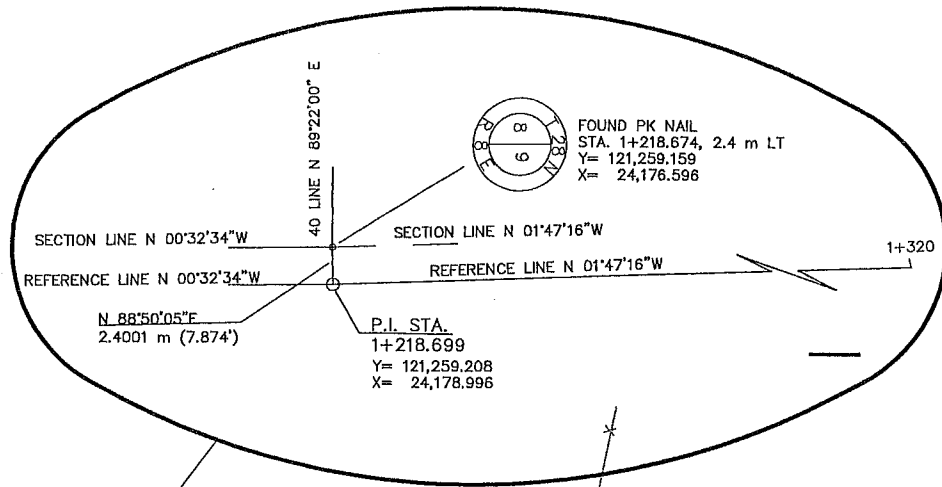
VILLAGE

OF

WESTON

SE/NE
SEC. 8

NE/NE
SEC. 8



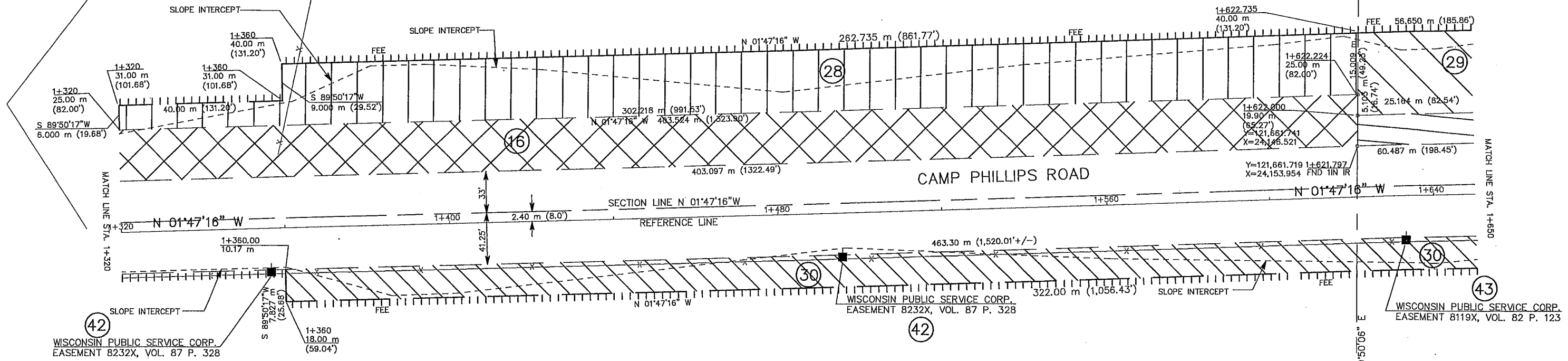
18

VILLAGE OF WESTON
C.S.M. VOL. 32 P. 187

FRED DEHNEL

40 LINE
S 89°50'06\"/>

MATCH LINE STA. 1+650



17
MARATHON DISTRICT OF SAMOSET COUNCIL
BOY SCOUTS OF AMERICA

CAMP PHILLIPS

SW/NW
SEC. 9

NW/NW
SEC. 9

VILLAGE

OF

WESTON

REVISION DATE	10/02/01 9/25/09	DATE	6-10-99	SCALE, METERS	0 20 m 40 m	HWY: CAMP PHILLIPS ROAD	FEDERAL PROJECT NO:		
	8/20/09	GRID FACTOR				COUNTY: MARATHON	STATE R/W PROJECT NO: 6676-03-01	SHEET NO: 4.7	M

VILLAGE

OF

WESTON

NE/NE
SEC. 8

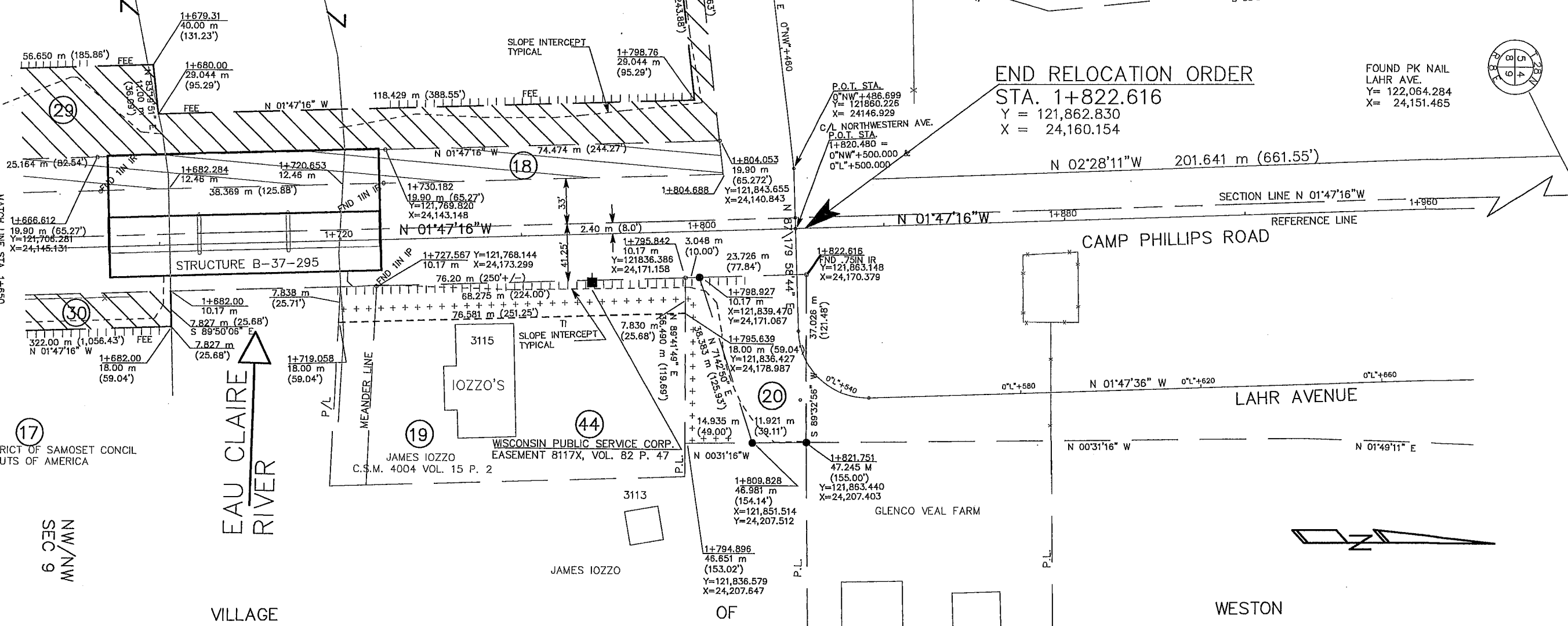
NOTE:
THE REFERENCE LINE FOR
THIS PROJECT IS
INDEPENDENT OF PREVIOUS
COUNTY PROJECT REFERENCE
LINE.

VILLAGE OF WESTON
C.S.M. 8419 VOL. 32 P. 187

NORTHWESTERN AVENUE

END RELOCATION ORDER
STA. 1+822.616
Y = 121,862.830
X = 24,160.154

FOUND PK NAIL
LAHR AVE.
Y= 122,064.284
X= 24,151.465



MARATHON DISTRICT OF SAMOSET CONCL
BOY SCOUTS OF AMERICA

NW/NW
SEC. 9

VILLAGE

OF

WESTON

REVISION DATE	10/02/01 9/25/09	DATE	6-10-99	SCALE, METERS	0 20 m 40 m	HWY: CAMP PHILLIPS ROAD	FEDERAL PROJECT NO:	
	8/20/09 12/09/09	GRID FACTOR				COUNTY: MARATHON	STATE R/W PROJECT NO: 6676-03-01	
							SHEET NO: 4.8	M