

INDEX OF SHEETS

SHEET NO. 1	TITLE	
SHEET NO.	TYPICAL CROSS SECTIONS	
SHEET NO.	ESTIMATE OF QUANTITIES	
SHEET NO.	MISCELLANEOUS QUANTITIES	
SHEET NO.	RIGHT OF WAY PLAT	
SHEET NO.	PLAN AND PROFILE STA. TO STA.	
SHEET NO.	STANDARD DETAILS	
SHEET NO.	DRAINAGE STRUCTURES	
SHEET NO.	CROSS SECTIONS	

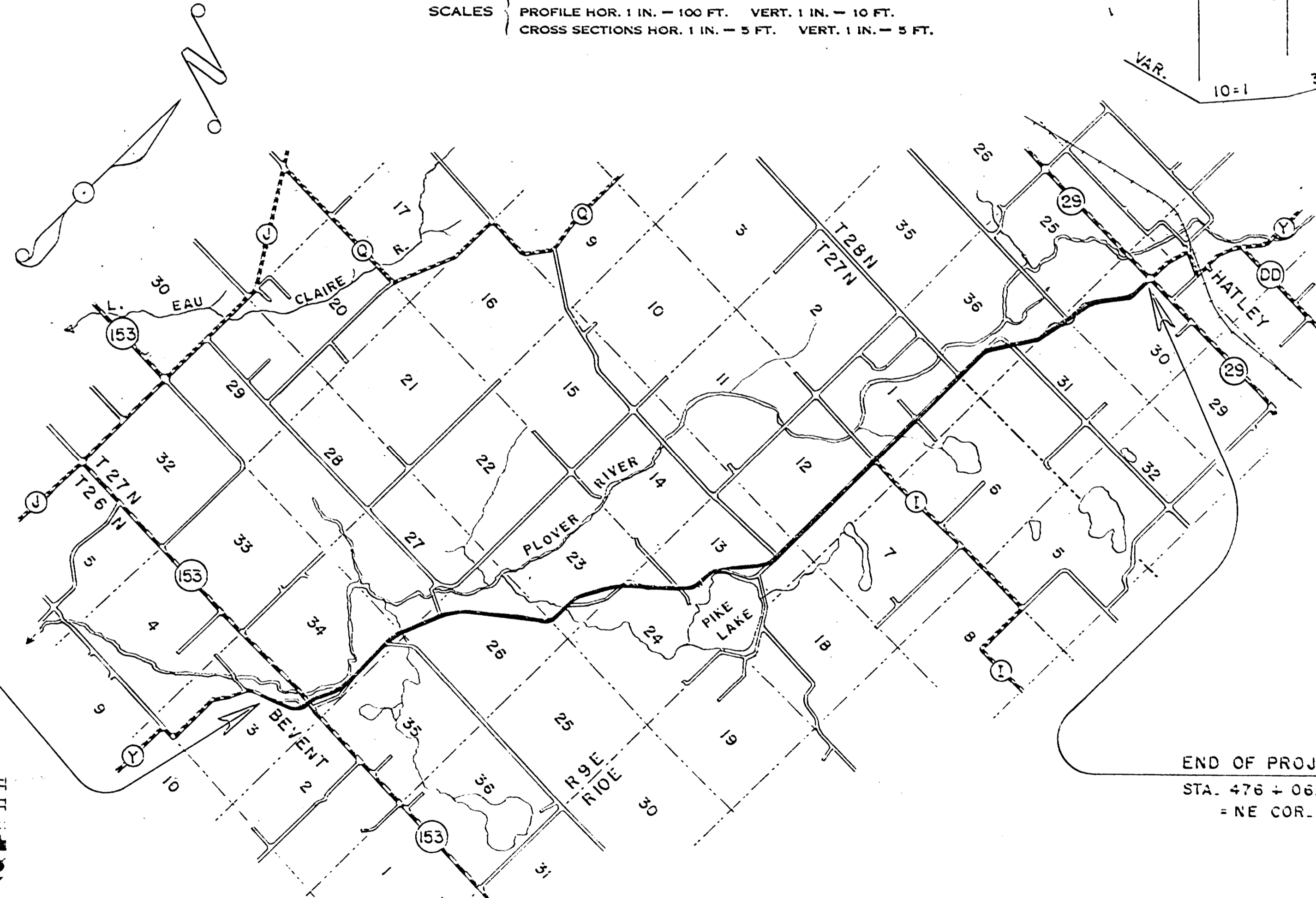
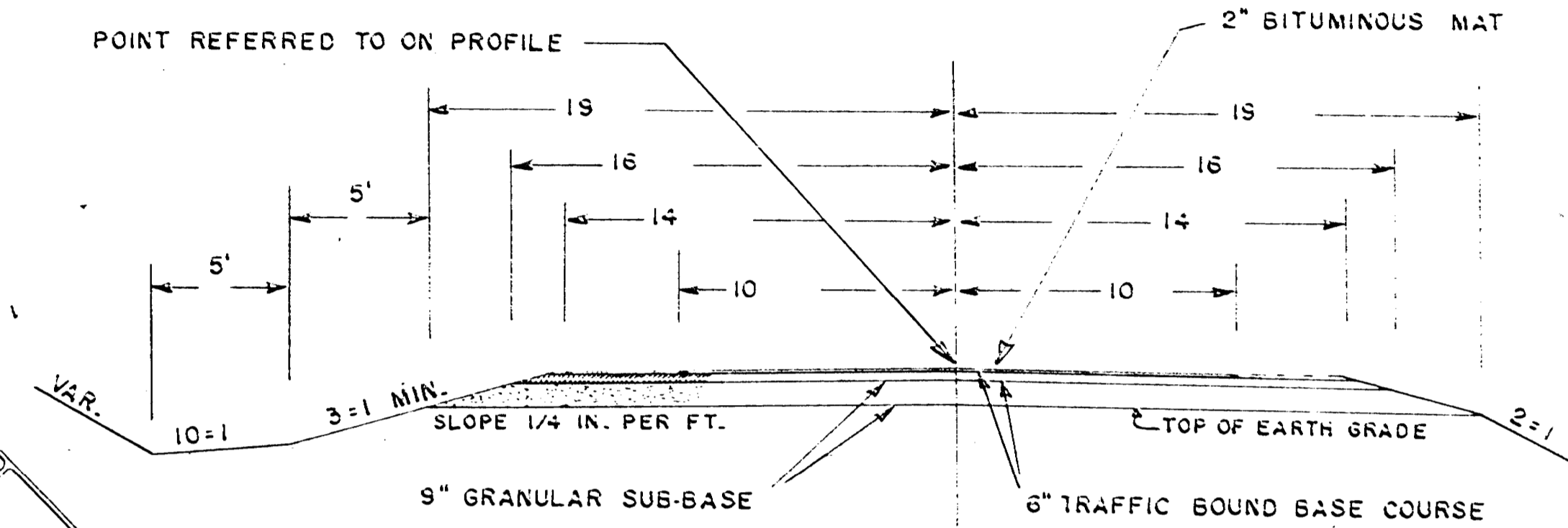
STATE OF WISCONSIN  
STATE HIGHWAY COMMISSION OF WISCONSIN

COUNTY AND HIGHWAY	ROUTE AND SECTION	CLASS AND AGREEMENT		SHEET NUMBER	TOTAL SHEETS
		STATE	FEDERAL		
				4	
				WIS	

PLAN AND PROFILE OF PROPOSED



PLAN 1 IN. = 100 FT.  
PROFILE HOR. 1 IN. = 100 FT. VERT. 1 IN. = 10 FT.  
CROSS SECTIONS HOR. 1 IN. = 5 FT. VERT. 1 IN. = 5 FT.



BEGINNING OF PROJECT  
STA. 0+00.0 = 294.5' N. OF SW COR. NW-NE SEC. 3

END OF PROJECT  
STA. 476+06.8 = VILLAGE LIMITS OF HATLEY  
= NE COR. SW-NW SEC. 30

CONVENTIONAL SIGNS

STATE LINE	-----	CULVERTS IN PLACE	-----
COUNTY LINE	-----	CULVERTS REQUIRED	-----
TOWNSHIP OR RANGE LINE	-----	DROP INLET	-----
SECTION LINE	-----	POWER POLE	-----
NEW RIGHT OF WAY LINE	-----	TELEPHONE OR TELEGRAPH POLE	-----
PRESENT RIGHT OF WAY LINE	-----	RIGHT OF WAY MARKERS	-----
WIRE FENCE { WOVEN	-----	REFERENCE STAKE FOR HUBS ONLY	-----
{ BARBED	-----	MARSH	-----
LOT LINE	-----	HEDGE	-----
CORPORATE OR CITY LIMITS	-----	TREES	-----
PROPERTY LINE	-----		
TRAVELED WAY OR P.E.	-----	GROUND ELEVATION	DATUM LINE 73.9
RAILROADS	-----	GRADE ELEVATION	DATUM LINE 75.16
BASE OF SURVEY LINE	-----		

LAYOUT

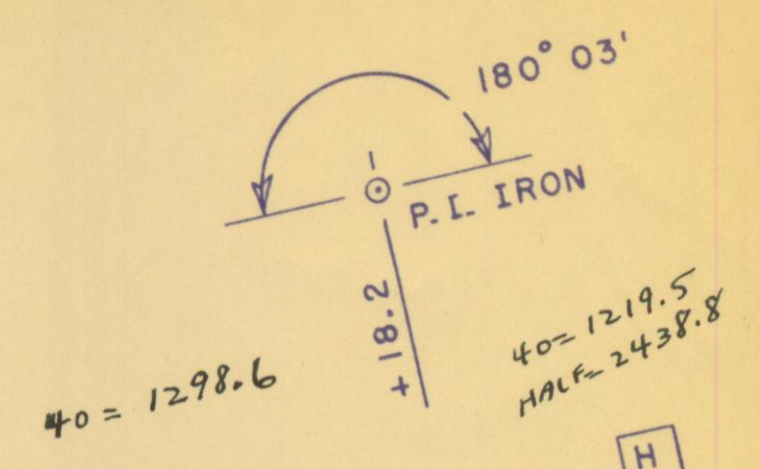
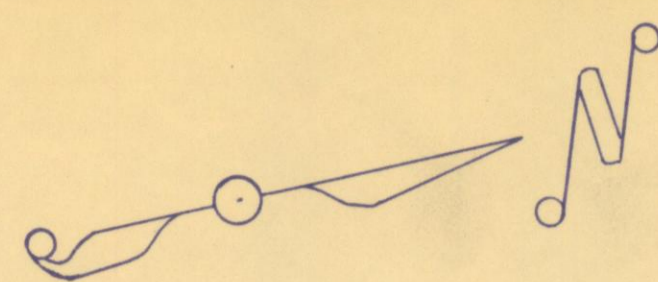
SCALE ONE MILE

TOTAL NET LENGTH OF CENTERLINE = 9.017 MI.

STATE HIGHWAY COMMISSION OF WISCONSIN MADISON, WIS.	
DIVISION COMPUTER DISTRICT CHECKER	C. E. C. C. A. L.
CORRECT	NOTE BOOK M. C. CHECKER CORRECT
DATE	DISTRICT ENGINEER
RECOMMENDED FOR APPROVAL	
DATE	ENGINEER OF DESIGN
APPROVED	
DATE	STATE HIGHWAY ENGINEER
DEPARTMENT OF COMMERCE BUREAU OF PUBLIC ROADS	
APPROVED	

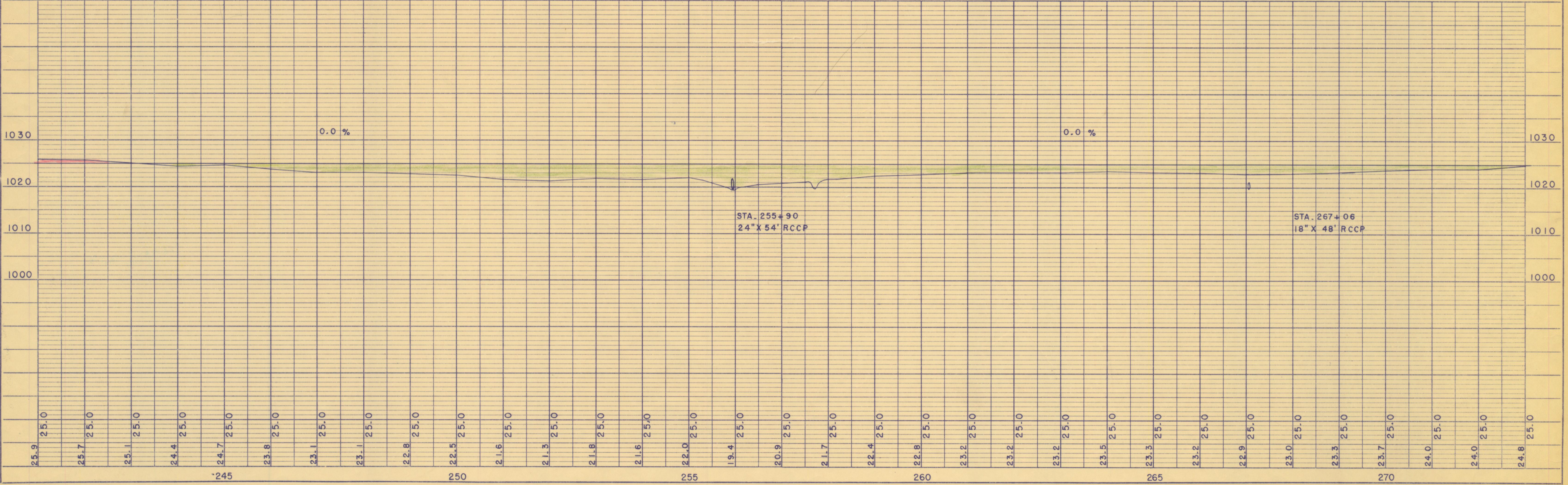
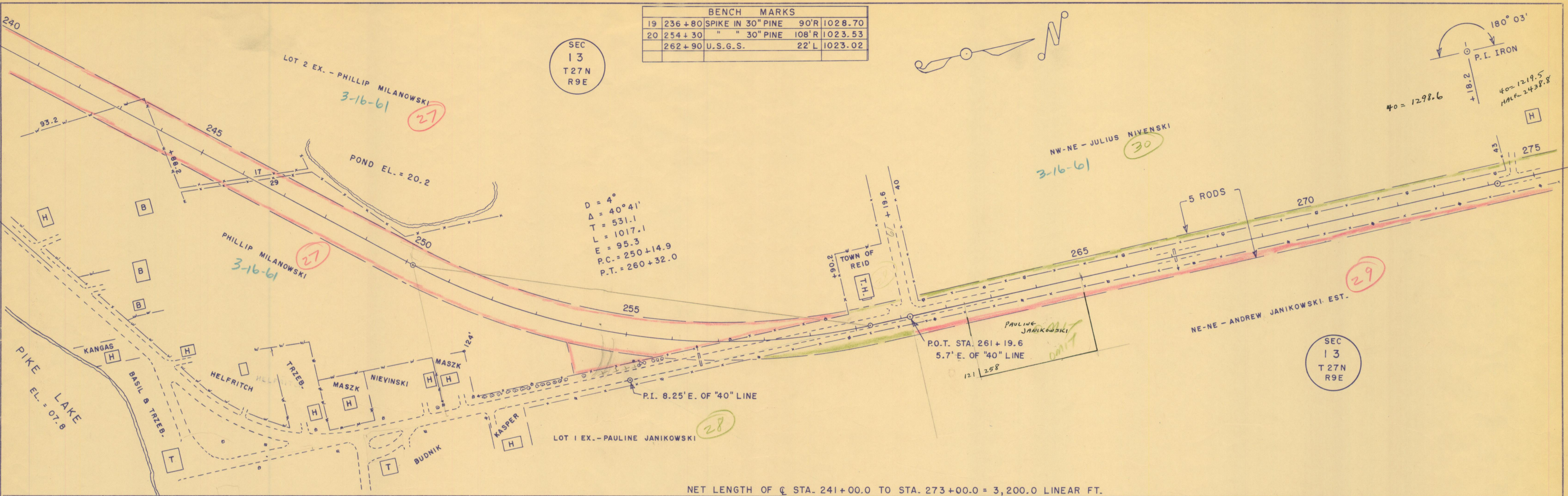
BENCH MARKS			
19	236+80	SPIKE IN 30" PINE	90'R 1028.70
20	254+30	" " 30" PINE	108'R 1023.53
	262+90	U.S.G.S.	22'L 1023.02

SEC  
13  
T27N  
R9E

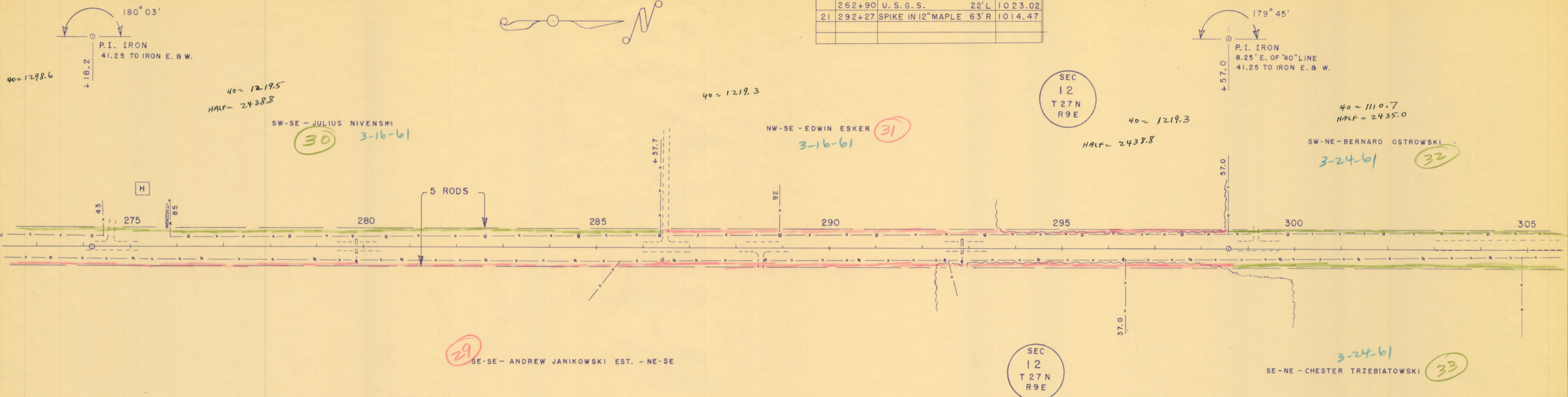


DATE: 6-60  
BY: C.E.C.  
SURVEYED, PLOTTED, CHECKED, NOTE BOOK NO. RT. OF WAY CHECKED.

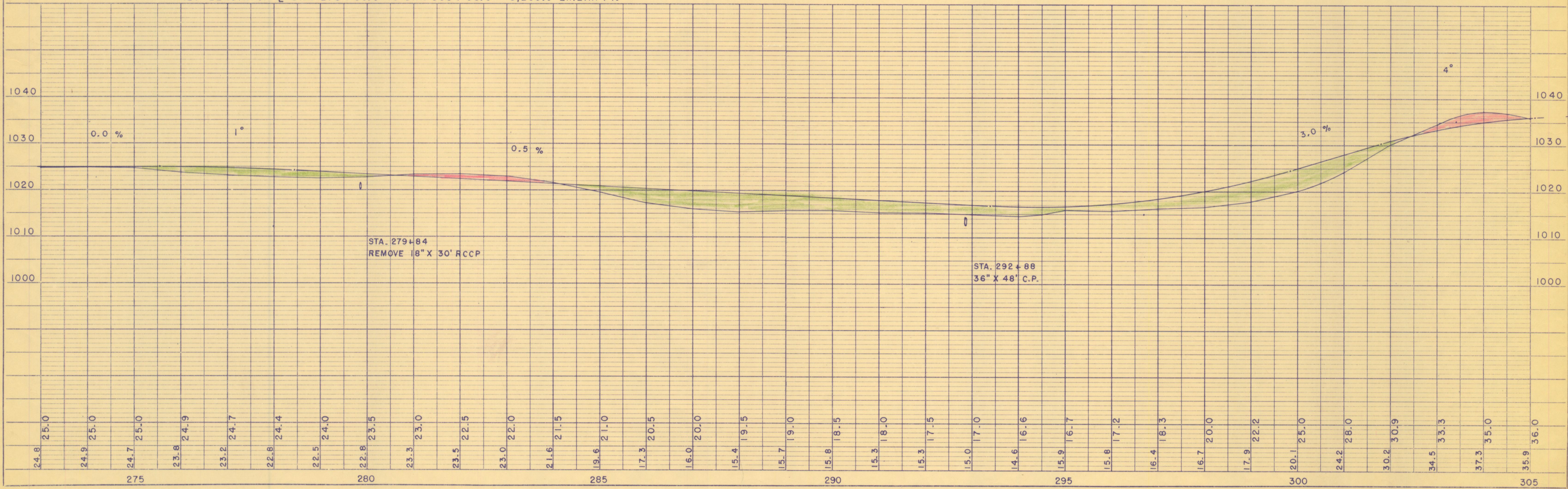
DATE: 6-60  
BY: C.E.C.  
SURVEYED, PLOTTED, CHECKED, NOTE BOOK NO. STRUCTURE NOTATIONS CIVD.



BENCH MARKS			
262+90	U. S. G. S.	22'L	1023.02
21 292+27	SPIKE IN 12" MAPLE	63'R	1014.47



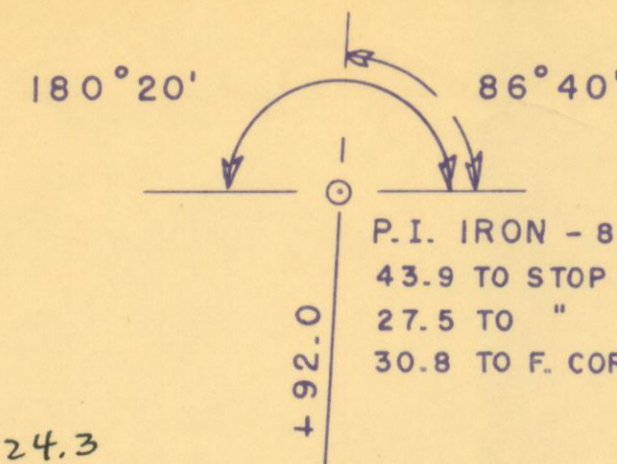
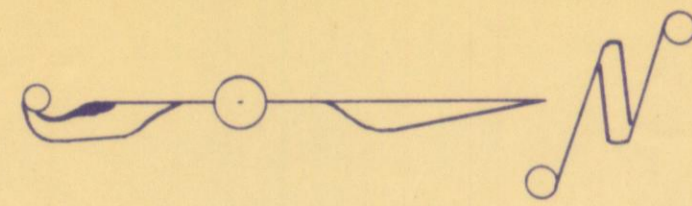
NET LENGTH OF C STA. 273 + 00.0 TO STA. 305 + 00.0 = 3,200.0 LINEAR FT.



DATE 6-60  
BY C.E.C.  
SURVEYED, PLOTTED, ALIGNED, CHECKED, FIT. OF WAT. CHECKED.

DATE 6-60  
BY C.E.C.  
SURVEYED, PLOTTED, GRADES CHECKED, STRUCTURE NOTATIONS CHECKED.

BENCH MARKS			
22	307+41	SPIKE IN 12" MAPLE	48'L 1040.65
23	329+98	" " 10" PINE	44'R 1026.20



SEC 12  
T 27N  
R 9E

SEC 1  
T 27N  
R 9E

SEC 12  
T 27N  
R 9E

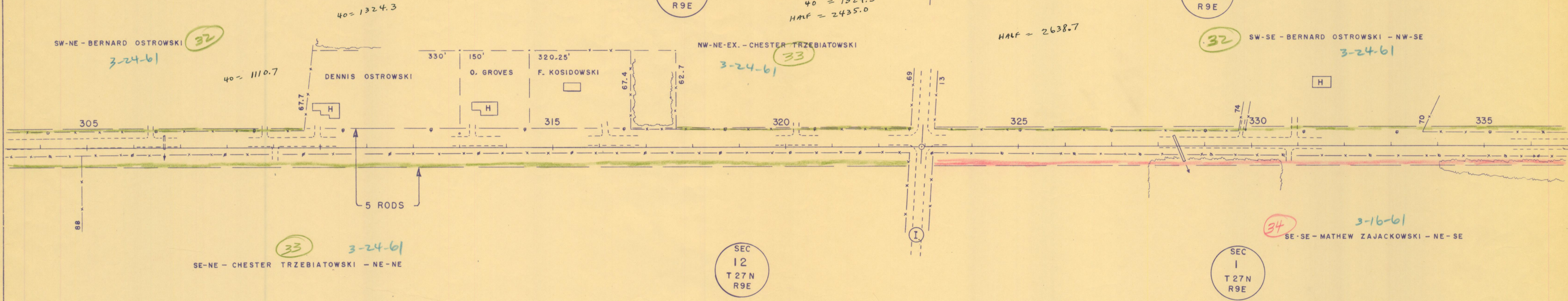
SEC 1  
T 27N  
R 9E

40 = 1324.3  
HALF = 2435.0

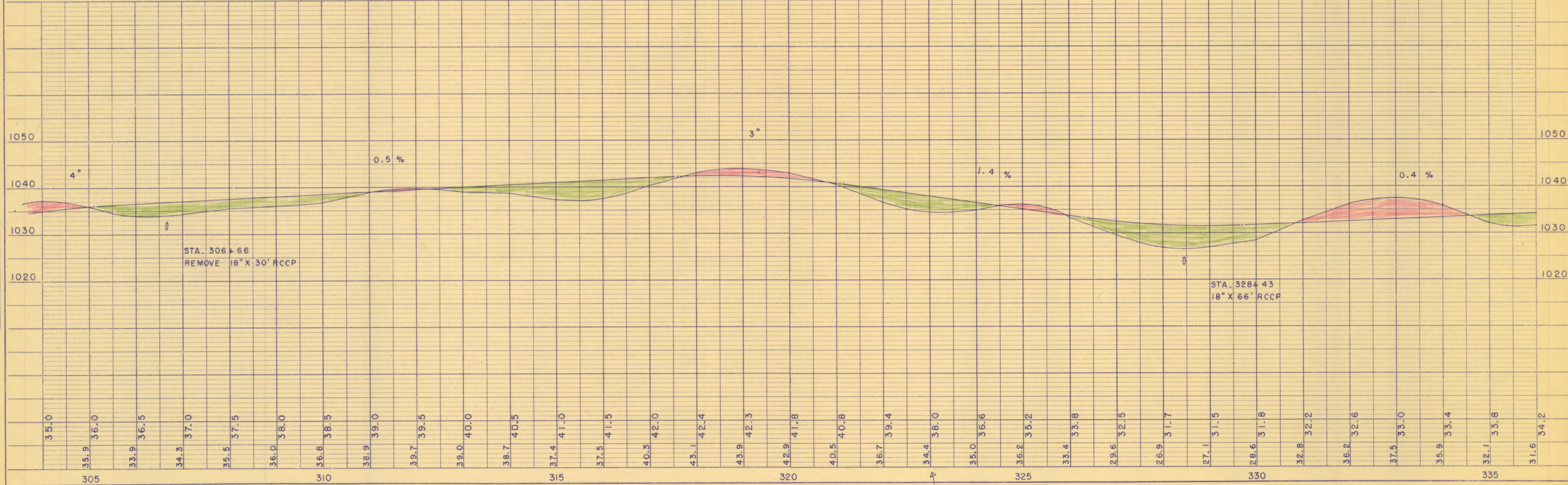
HALF = 2638.7

DATE 6-60  
BY C.E.C.  
SURVEYED, PLOTTED, ALIGNED, CHECKED, RT. OF WAY CHECKED.  
PLAN NOTE BOOK NO.

DATE 6-60  
BY C.E.C.  
SURVEYED, PLOTTED, B.M.'S NOTED, STRUCTURE NOTATIONS CHECKED.  
PROFILE NOTE BOOK NO.

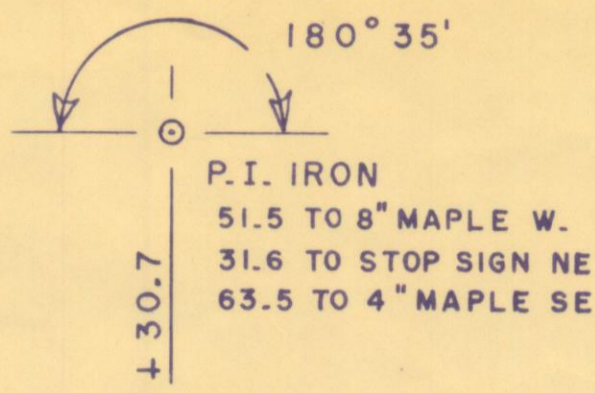
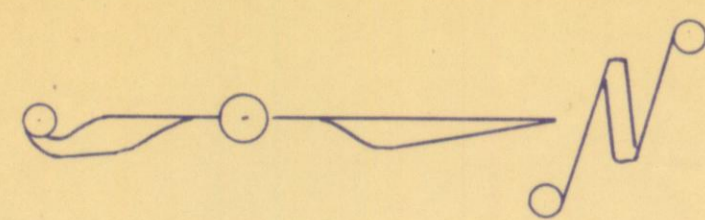


NET LENGTH OF C STA. 305+00.0 TO STA. 335+00.0 = 3,000.0 LINEAR FT.



38.0  
1.5  
36.5  
34.5  
2.1

BENCH MARKS			
24	349+65	SPIKE IN 12" OAK	72'L 1046.15
25	353+26	" " 6" OAK	43'L 1058.14
26	362+92	" " 4" BIRCH	42'L 1055.60



SEC  
1  
T 27 N  
R 9 E

HALF = 2638.7

NW-SE - BERNARD OSTROWSKI

32 3-24-61

35 SW-NE - LEO HOLEWINSKI

3-28-61

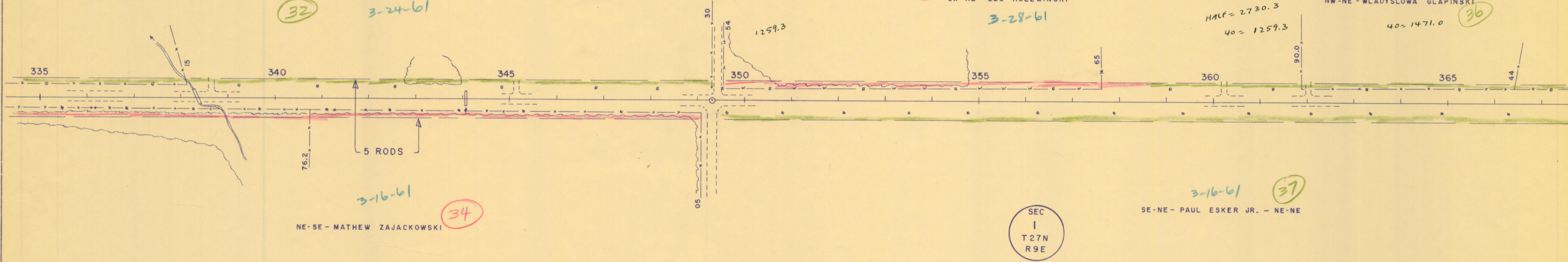
HALF = 2730.3  
40 = 1259.3

NW-NE - WLADYSLOWA GLAPINSKI

40 = 1471.0

36

DATE 6-60  
BY C.E.C.  
SURVEYED, PLOTTED, CHECKED, RECHECKED  
PLAN NOTE BOOK NO.



NE-SE - MATHEW ZAJACKOWSKI

3-16-61

34

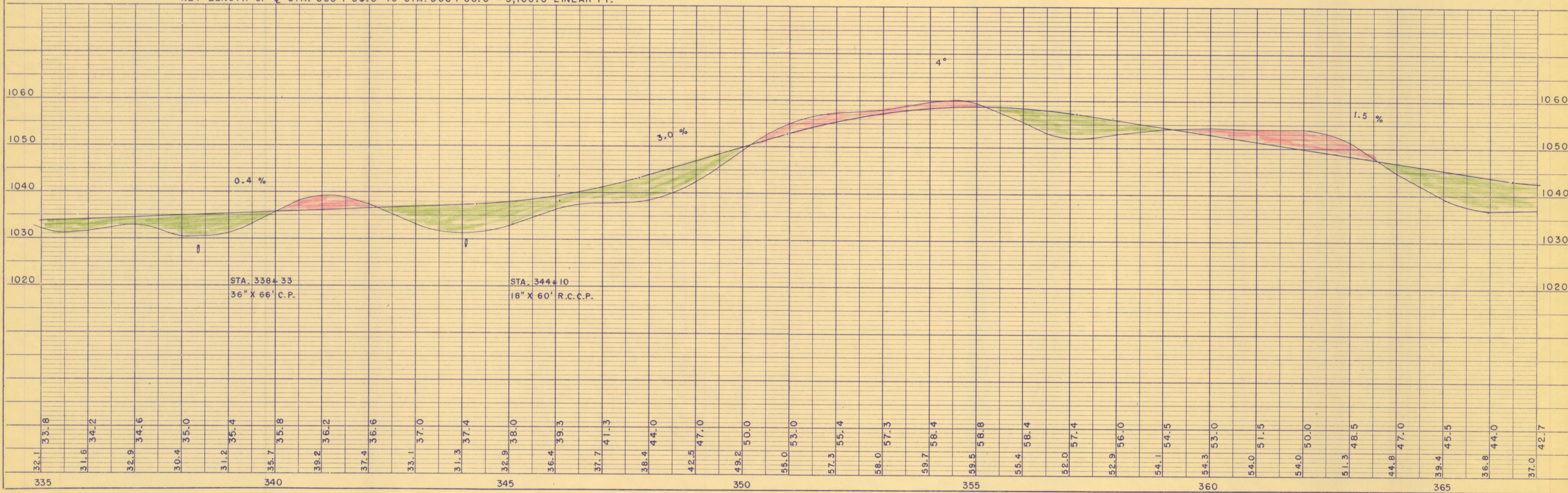
SEC  
1  
T 27 N  
R 9 E

SE-NE - PAUL ESKER JR. - NE-NE

3-16-61

37

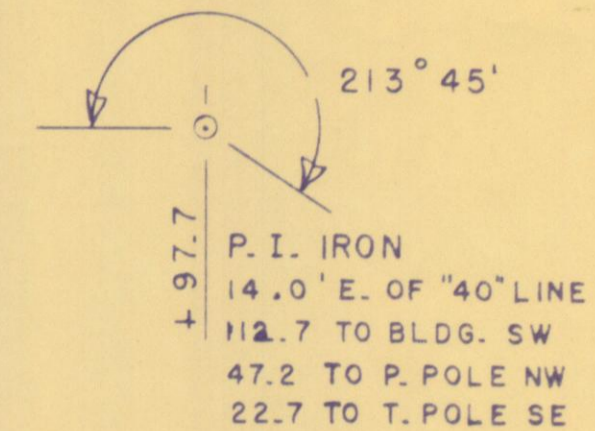
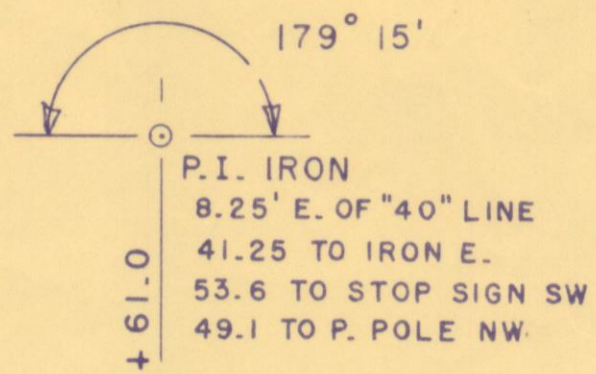
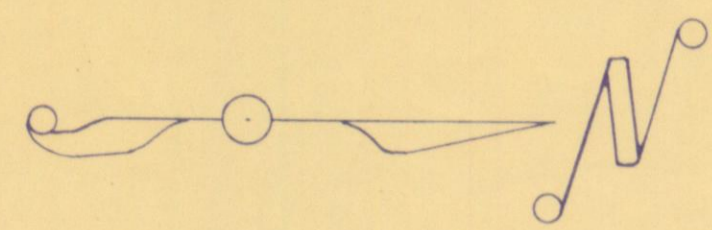
NET LENGTH OF C STA. 335 + 00.0 TO STA. 366 + 00.0 = 3,100.0 LINEAR FT.



DATE 6-60  
BY C.E.C.  
SURVEYED, PLOTTED, CHECKED, RECHECKED  
PROFILE NOTE BOOK NO.

C.T.H. "Y" - TOWNS OF REID & RINGLE

BENCH MARKS			
27	375+14	SPIKE IN 6" BEECH	55'L 1053.04
28	385+15	" " 12" MAPLE	58'L 1052.52
	405+86	U.S.G.S.	29'R 1045.44



SEC  
1  
T 27 N  
R 9 E

SEC  
36  
T 28 N  
R 9 E

HALF = 2730.3  
40 = 1471.0

HALF = 2639.9  
40 = 1318.3

NW-NE - WLADYSLOWA GLAPINSKI

SW-SE - FELIX EASKER - NW-SE-EX.

36

3-16-61  
NE-NE - PAUL ESKER JR.  
37

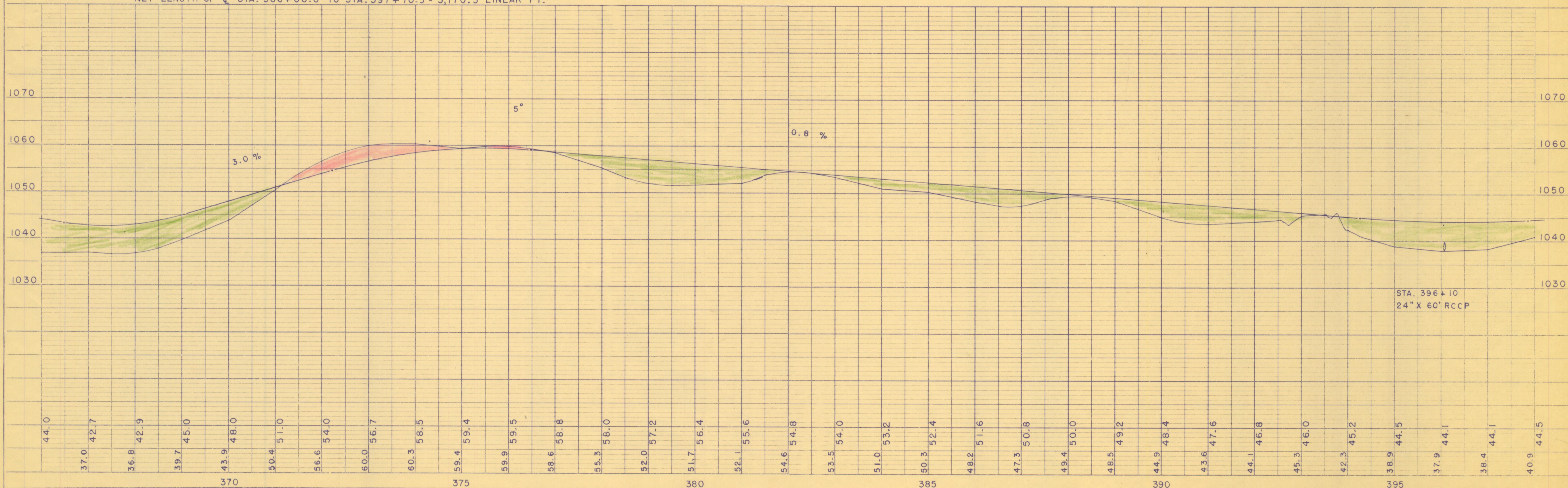
SEC  
1  
T 27 N  
R 9 E

SEC  
36  
T 28 N  
R 9 E

38  
3-16-61  
SE-SE - ZYGMUND ESKER - NE-SE

D = 6°  
Δ = 33° 45'  
T = 289.7  
L = 562.5  
E = 43.0  
P.C. = 392 + 08.0  
P.T. = 397 + 70.5  
P.C. IS 13.1' E. OF "40" LINE

NET LENGTH OF C. STA. 366+00.0 TO STA. 397+70.5 = 3,170.5 LINEAR FT.



DATE 6-60  
BY C. E. C.  
SUBMITTED  
PLOTTED  
NOTE BOOK  
NO.

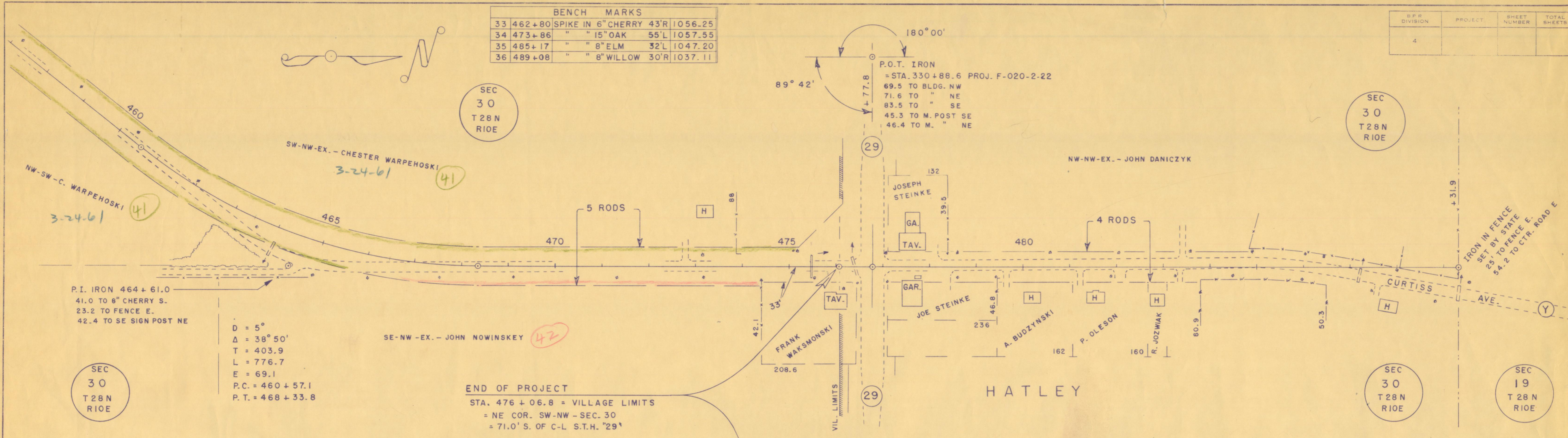
DATE 6-60  
BY C. E. C.  
SUBMITTED  
PLOTTED  
NOTE BOOK  
NO.

C.T.H. "Y" - TOWN OF NORRIE & VIL. OF HATLEY

BENCH MARKS			
33	462+80	SPIKE IN 6" CHERRY 43'R	1056.25
34	473+86	" " 15" OAK 55'L	1057.55
35	485+17	" " 8" ELM 32'L	1047.20
36	489+08	" " 8" WILLOW 30'R	1037.11

R.F.R. DIVISION	PROJECT	SHEET NUMBER	TOTAL SHEETS
4			

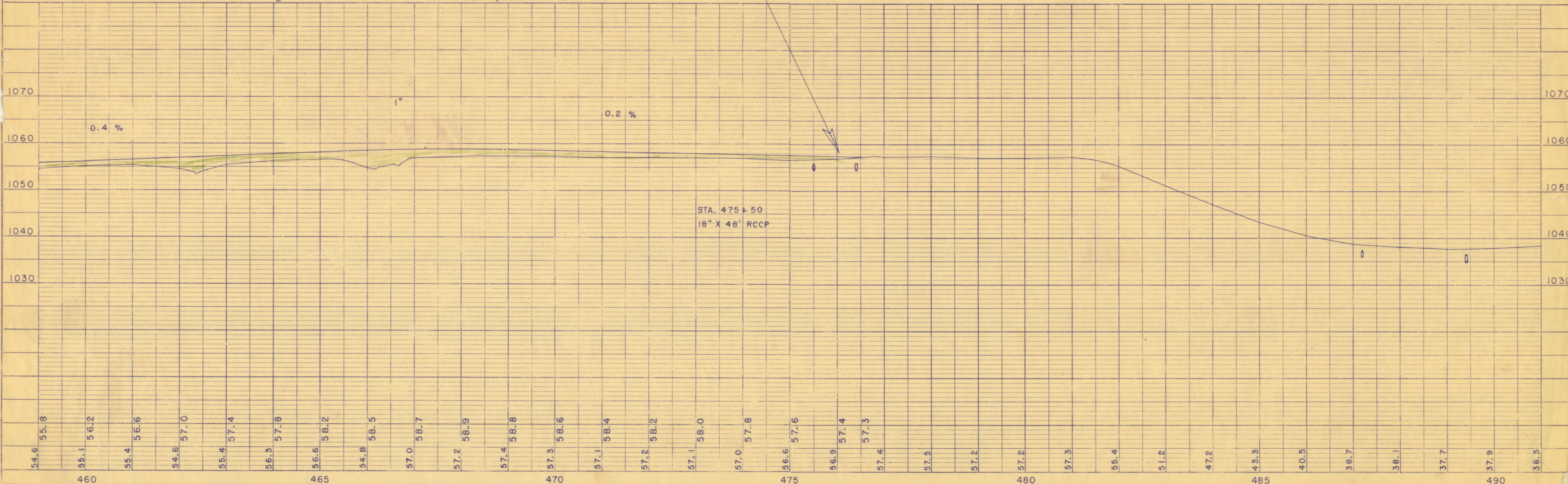
DATE: 7-60  
 BY: C.E.C.  
 PLAN: SURVEYED, PLATTED, PRINTED, CHECKED, NOTE BOOK NO. 101, STRUCTURE NOTATIONS DIV.



D = 5°  
 Δ = 38° 50'  
 T = 403.9  
 L = 776.7  
 E = 69.1  
 P.C. = 460 + 57.1  
 P.T. = 468 + 33.8

END OF PROJECT  
 STA. 476 + 06.8 = VILLAGE LIMITS  
 = NE COR. SW-NW - SEC. 30  
 = 71.0' S. OF C-L S.T.H. "29"

NET LENGTH OF C STA. 459+00.0 TO STA. 476+06.8 = 1,706.8 LINEAR FT.

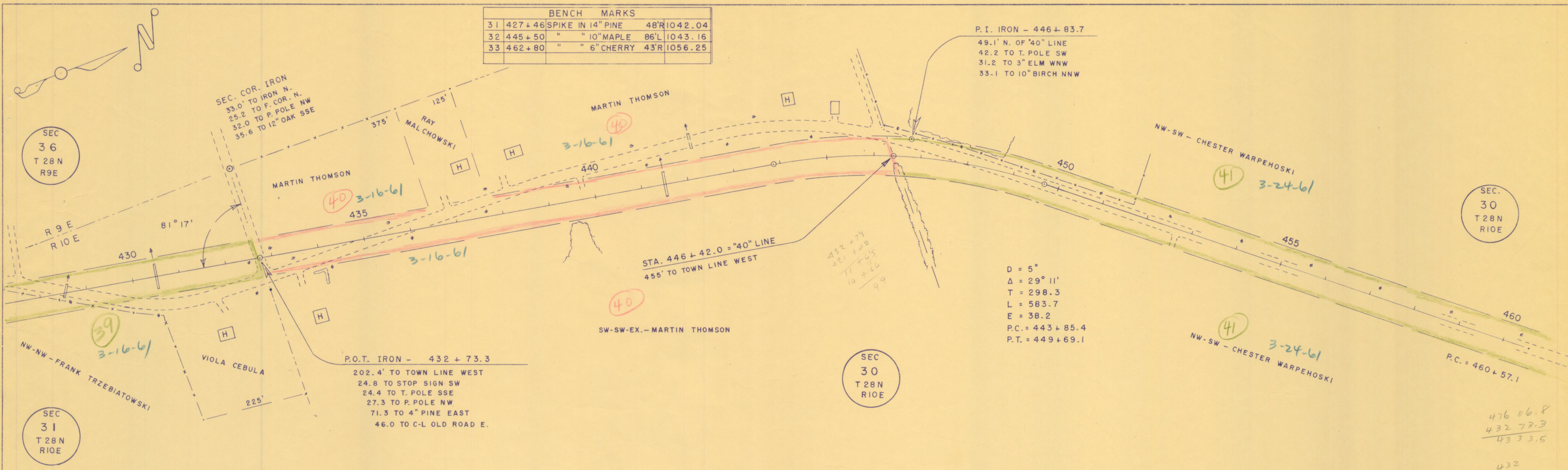


DATE: 7-60  
 BY: C.E.C.  
 PROFILE: SURVEYED, PLATTED, PRINTED, CHECKED, NOTE BOOK NO. 101, STRUCTURE NOTATIONS DIV.

C.T.H. "Y" - TOWN OF NORRIE

BENCH MARKS			
31	427+46	SPIKE IN 14" PINE	48'R 1042.04
32	445+50	" " 10" MAPLE	86'L 1043.16
33	462+80	" " 6" CHERRY	43'R 1056.25

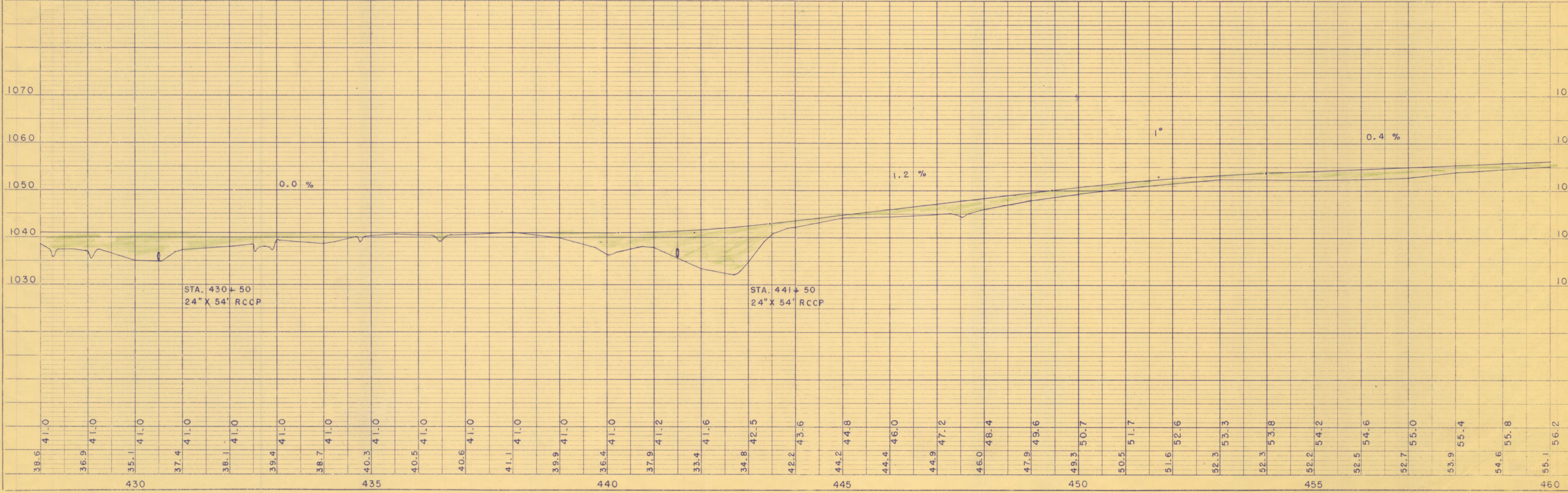
P.I. IRON - 446+83.7  
 49.1' N. OF '40" LINE  
 42.2 TO T. POLE SW  
 31.2 TO 3" ELM WNW  
 33.1 TO 10" BIRCH NNW



DATE 7-60  
 BY C.E.C.  
 SURVEYED  
 PLOTTED  
 CHECKED  
 NOTE BOOK  
 NO.

DATE 6-60  
 BY C.E.C.  
 SURVEYED  
 PLOTTED  
 CHECKED  
 NOTE BOOK  
 NO.

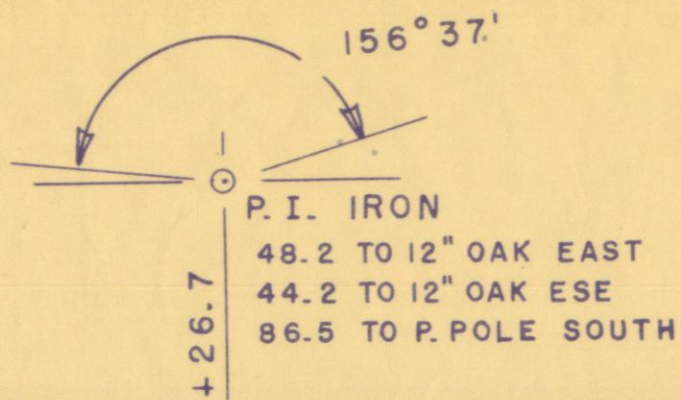
NET LENGTH OF C. STA. 428+00.0 TO STA. 459+00.0 = 3,100.0 LINEAR FT.



476 06.8  
 432 72.3  
 433 33.5  
 432

C.T.H. "Y" - TOWNS OF RINGLE & NORRIE

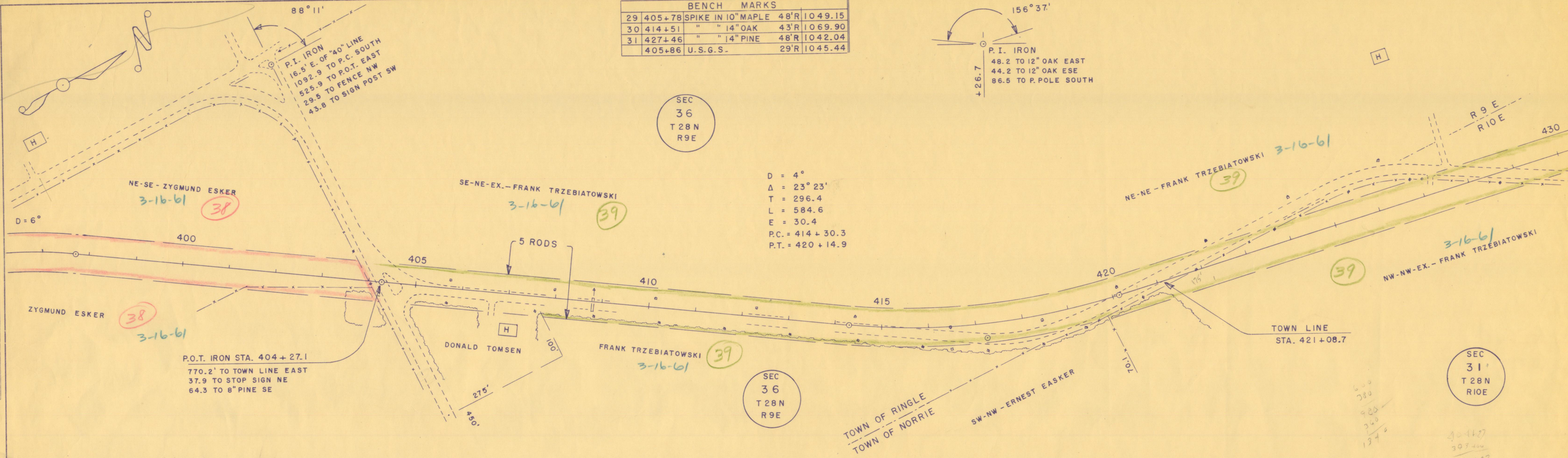
BENCH MARKS			
29	405+78	SPIKE IN 10" MAPLE	48'R 1049.15
30	414+51	" " 14" OAK	43'R 1069.90
31	427+46	" " 14" PINE	48'R 1042.04
	405+86	U.S.G.S.	29'R 1045.44



SEC  
36  
T28N  
R9E

D = 4°  
 Δ = 23° 23'  
 T = 296.4  
 L = 584.6  
 E = 30.4  
 P.C. = 414 + 30.3  
 P.T. = 420 + 14.9

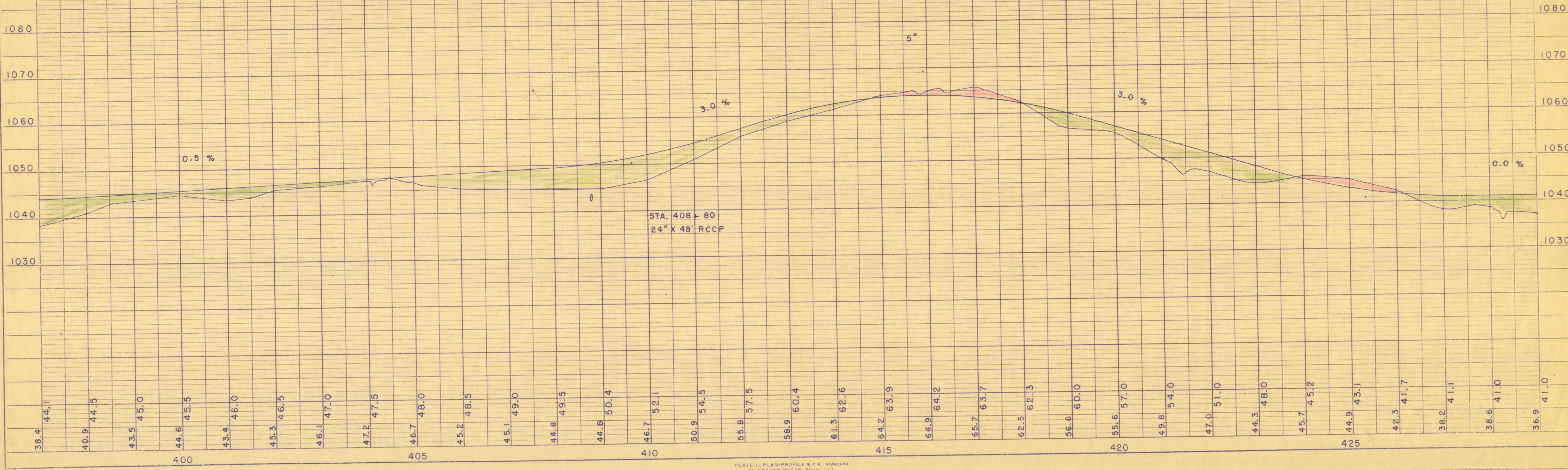
DATE  
6-60  
BY  
C.E.C.  
SURVEYED  
PLOTTED  
CHECKED  
RT. OF WAY CHECKED  
PLAN  
NOTE BOOK  
NO.



SEC  
31  
T28N  
R10E

NET LENGTH OF C. STA. 397+70.5 TO STA. 428+00.0 = 3,029.5 LINEAR FT.

DATE  
6-60  
BY  
C.E.C.  
SURVEYED  
PLOTTED  
CHECKED  
RT. OF WAY CHECKED  
PROFILE  
NOTE BOOK  
NO.



BLUE = DATA DEED FILED

BENCH MARKS				
1	0+26	SPIKE IN 8" ELM	53'R	974.24
2	8+05	" " 12" OAK	52'R	994.29
3	17+45	" " 12" OAK	68'R	002.31
4	27+71	" " 6" ELM	55'L	984.68
	25+95	U.S.G.S.	28'R	999.48

SEC 3  
T 26N  
R 9E

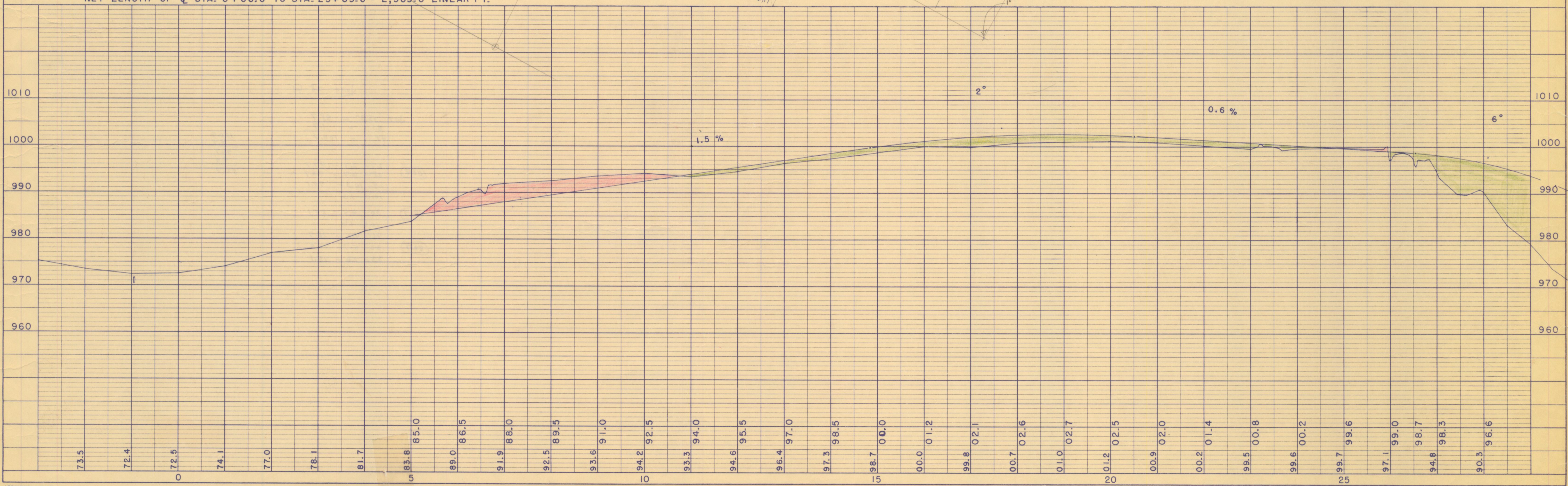
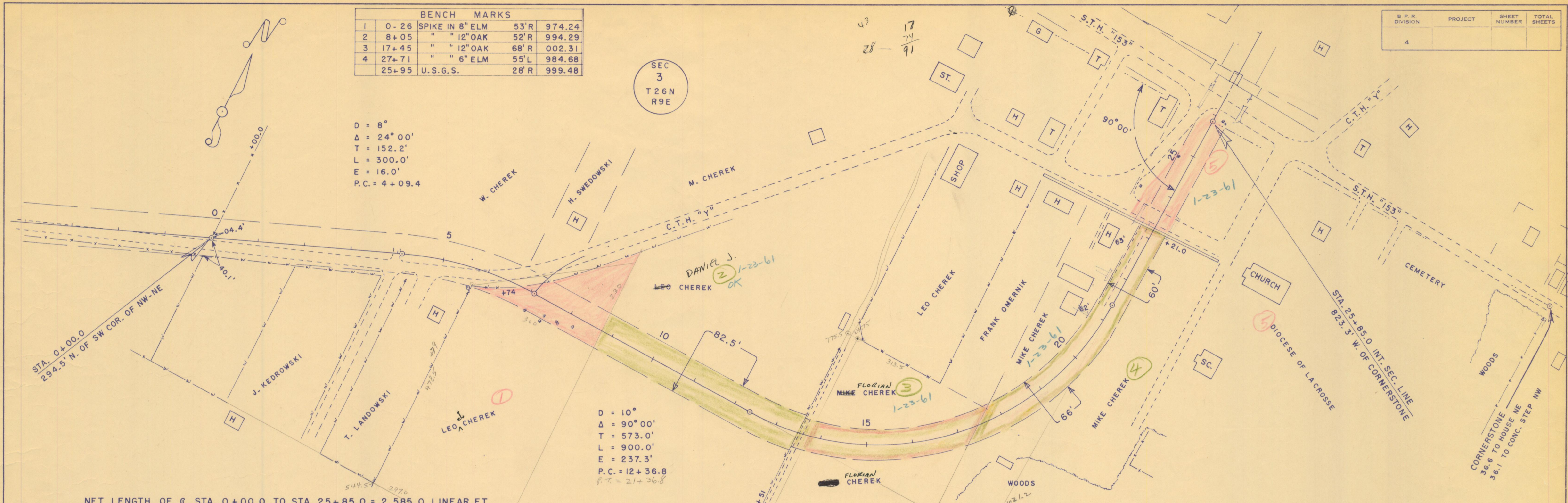
D = 8°  
Δ = 24° 00'  
T = 152.2'  
L = 300.0'  
E = 16.0'  
P.C. = 4+09.4

D = 10°  
Δ = 90° 00'  
T = 573.0'  
L = 900.0'  
E = 237.3'  
P.C. = 12+36.8  
P.T. = 21+36.8

B.P.R. DIVISION	PROJECT	SHEET NUMBER	TOTAL SHEETS
4			

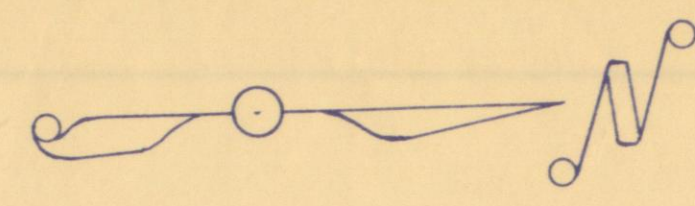
PLAN  
DATE: 4-60  
BY: C.E.C.  
SURVEYED, PLOTTED, ALIGNED, CHECKED, NOTE BOOK, INT. OF WORK CHECKED.

PROFILE  
DATE: 4-60  
BY: C.E.C.  
SURVEYED, PLOTTED, GRADES CHECKED, STRUCTURE NOTATIONS CHECKED, NOTE BOOK.





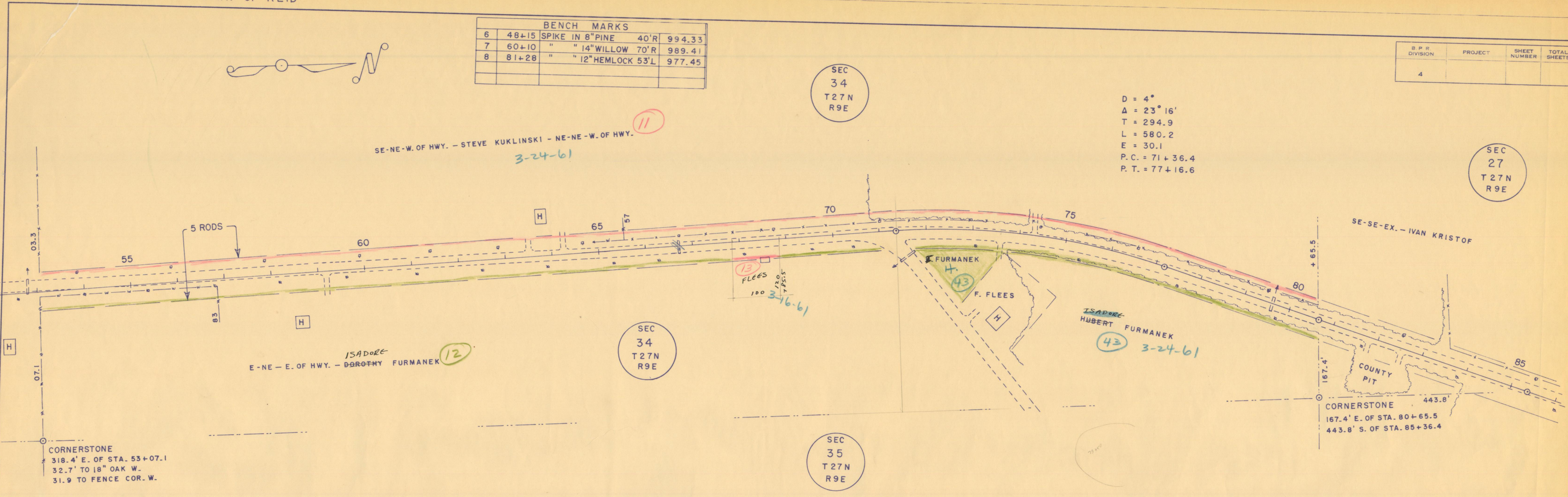
BENCH MARKS			
6	48+15	SPIKE IN 8" PINE	40'R 994.33
7	60+10	" " 14" WILLOW	70'R 989.41
8	81+28	" " 12" HEMLOCK	53'L 977.45



B.P.R. DIVISION	PROJECT	SHEET NUMBER	TOTAL SHEETS
4			

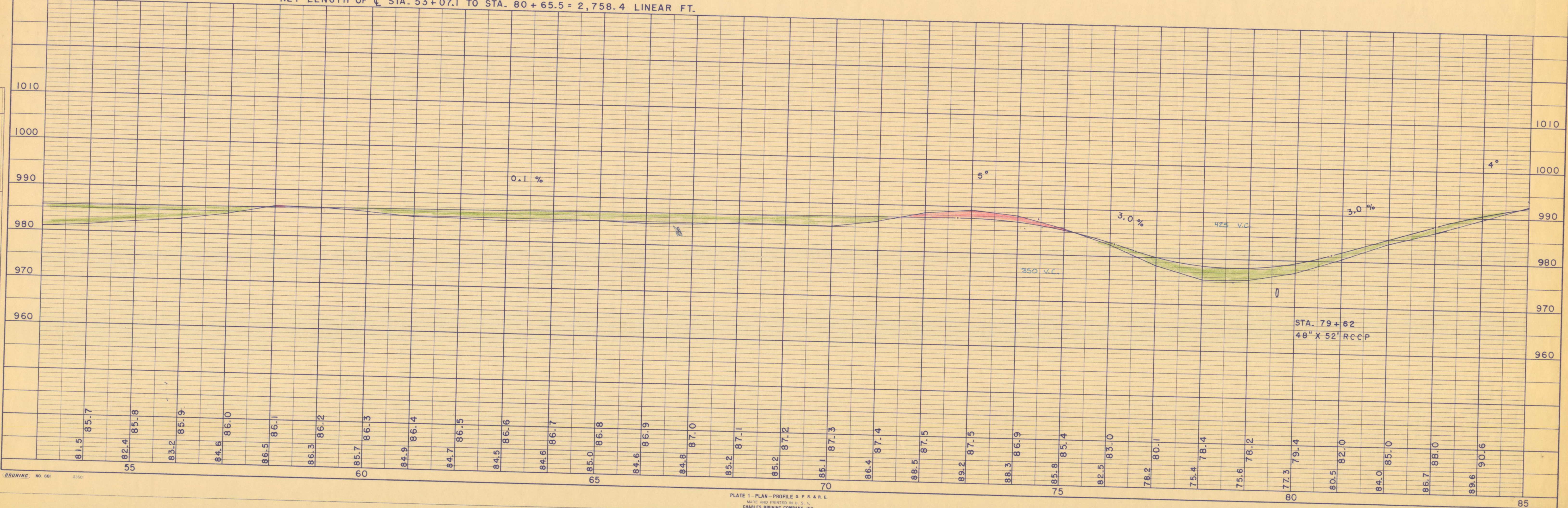
PLAN  
 SURVEYED BY: C. E. C.  
 DATE: 5-60  
 NOTE BOOK NO. [blank]  
 CHECKED BY: [blank]  
 RT. OF WAY CHECKED BY: [blank]

PROFILE  
 SURVEYED BY: C. E. C.  
 DATE: 5-60  
 NOTE BOOK NO. [blank]  
 CHECKED BY: [blank]  
 STRUCTURE (NOTATION) (P.I.D.) [blank]



D = 4°  
 Δ = 23° 16'  
 T = 294.9  
 L = 580.2  
 E = 30.1  
 P.C. = 71 + 36.4  
 P.T. = 77 + 16.6

NET LENGTH OF C. STA. 53+07.1 TO STA. 80+65.5 = 2,758.4 LINEAR FT.



BENCH MARKS			
8	81+28	SPIKE IN 12" HEMLOCK 53'L	977.45
9	99+49	" " CROSS 39' L	1004.67
10	112+10	U.S.G.S. 42' R	1009.58

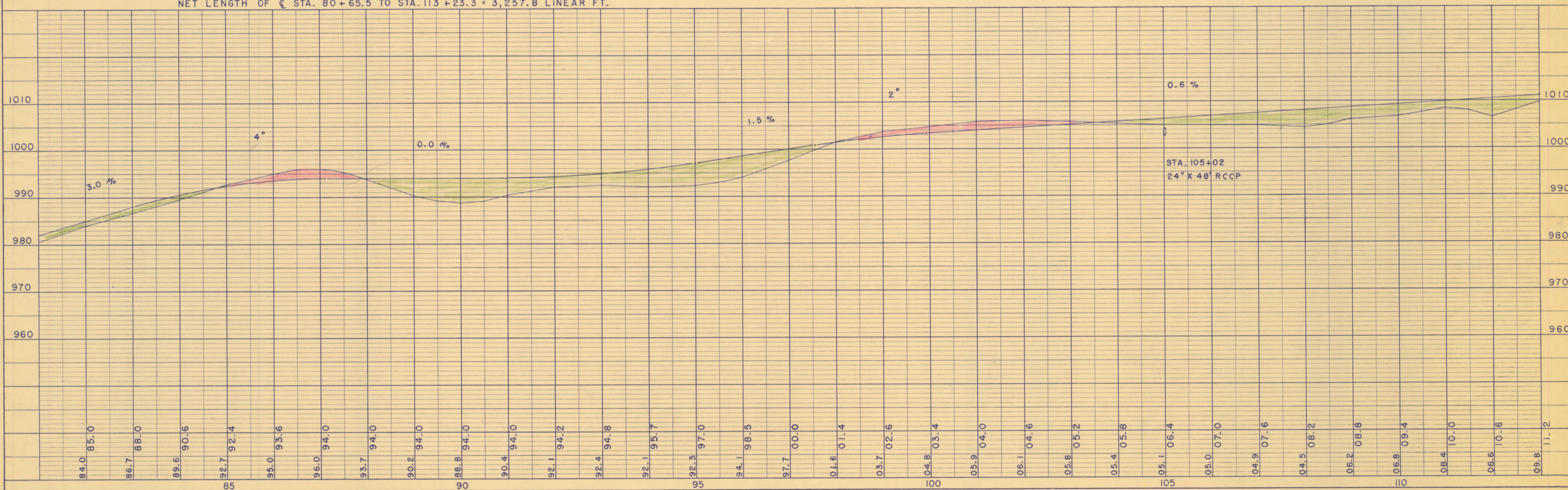
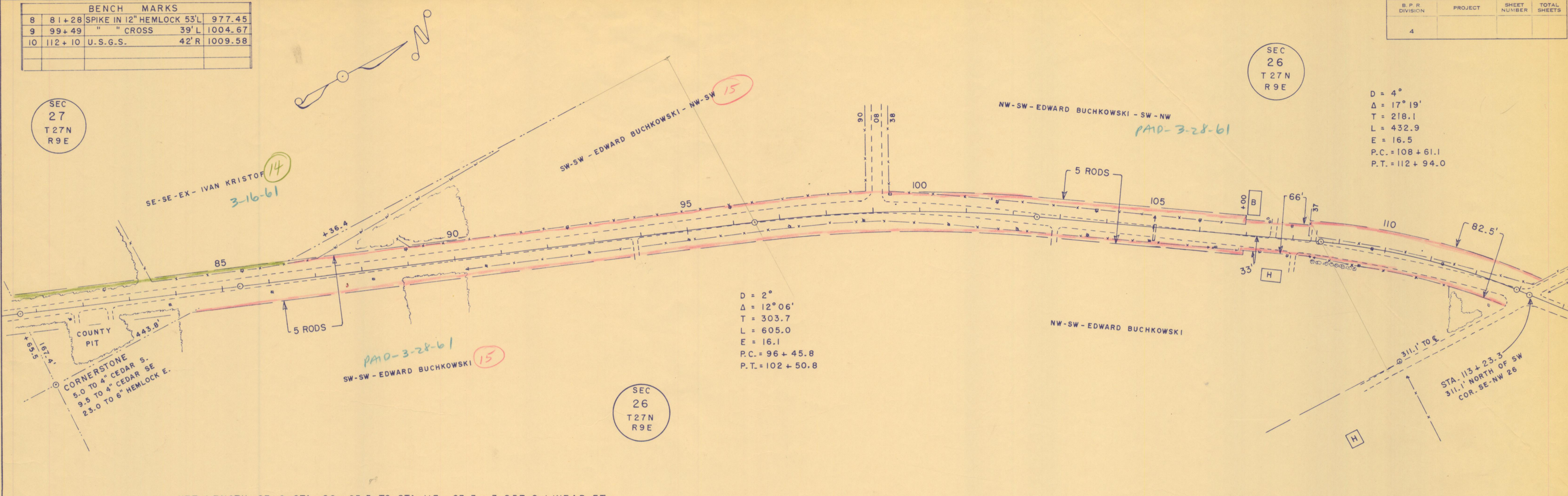
B.P.R. DIVISION	PROJECT	SHEET NUMBER	TOTAL SHEETS
4			

SEC 26  
T 27N  
R 9E

D = 4°  
Δ = 17° 19'  
T = 218.1  
L = 432.9  
E = 16.5  
P.C. = 108 + 61.1  
P.T. = 112 + 94.0

PLAN SURVEYED, PLOTTED, CHECKED, RT. OF WAY CHECKED. BY C.E.C. DATE 5-60

PROFILE SURVEYED, PLOTTED, CHECKED, GRADES CHECKED, STRUCTURE NOTATIONS CHECKED. BY C.E.C. DATE 5-60



C.T.H. "Y" - TOWN OF REID

BENCH MARKS			
10	112+10	U.S.G.S.	42'R 1009.58
11	131+18	SPIKE IN 12" ELM	45'R 1014.41
12	146+76	" " 8" OAK	57'R 1001.42

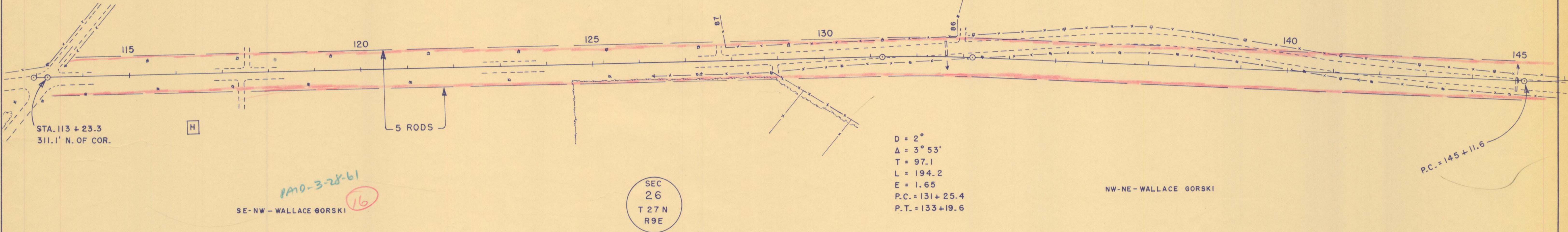
B.P.R. DIVISION	PROJECT	SHEET NUMBER	TOTAL SHEETS
4			

SEC  
26  
T 27 N  
R 9 E

SE-NW - WALLACE GORSKI - NE-NW <sup>16</sup>  
PA10-3-28-61

NW-NE - WALLACE GORSKI

PLAN  
SURVEYED BY C.E.C.  
DATE 5-60  
NOTE BOOK NO. \_\_\_\_\_  
ALIGNMENT CHECKED \_\_\_\_\_  
RT. OF WAY CHECKED \_\_\_\_\_

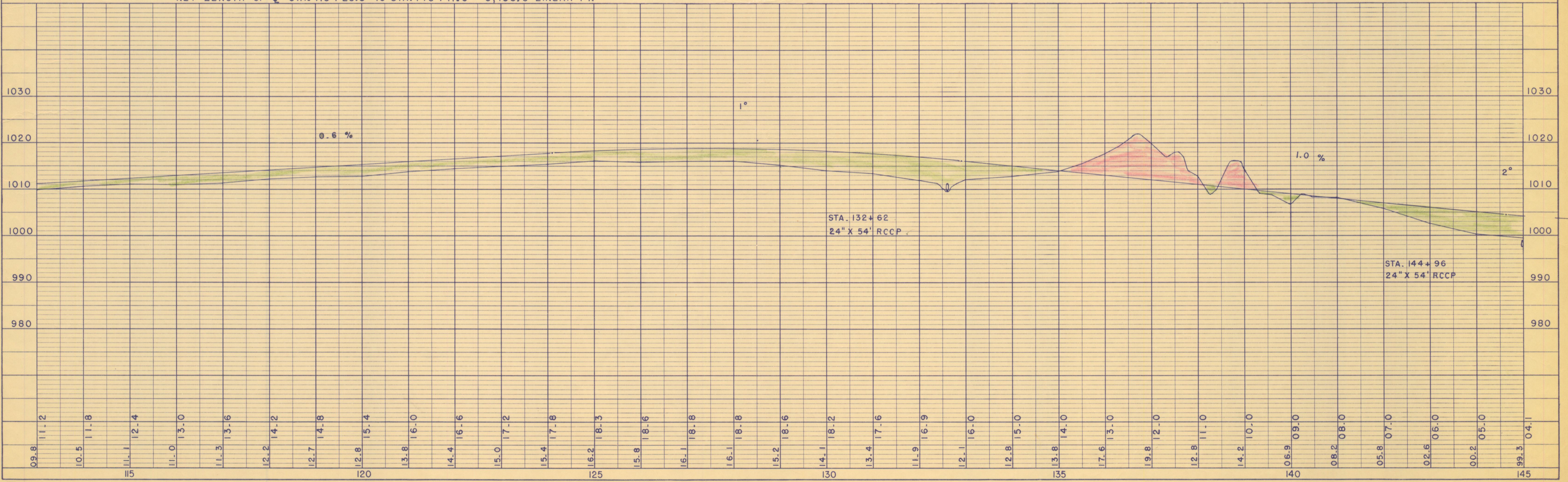


SE-NW - WALLACE GORSKI <sup>16</sup>  
PA10-3-28-61

SEC  
26  
T 27 N  
R 9 E

NET LENGTH OF C. STA. 113+23.3 TO STA. 145+11.6 = 3,188.3 LINEAR FT.

PROFILE  
SURVEYED BY C.E.C.  
DATE 5-60  
NOTE BOOK NO. \_\_\_\_\_  
GRADES CHECKED \_\_\_\_\_  
B.M.'S NOTED \_\_\_\_\_  
STRUCTURE NOTATIONS CHECKED \_\_\_\_\_

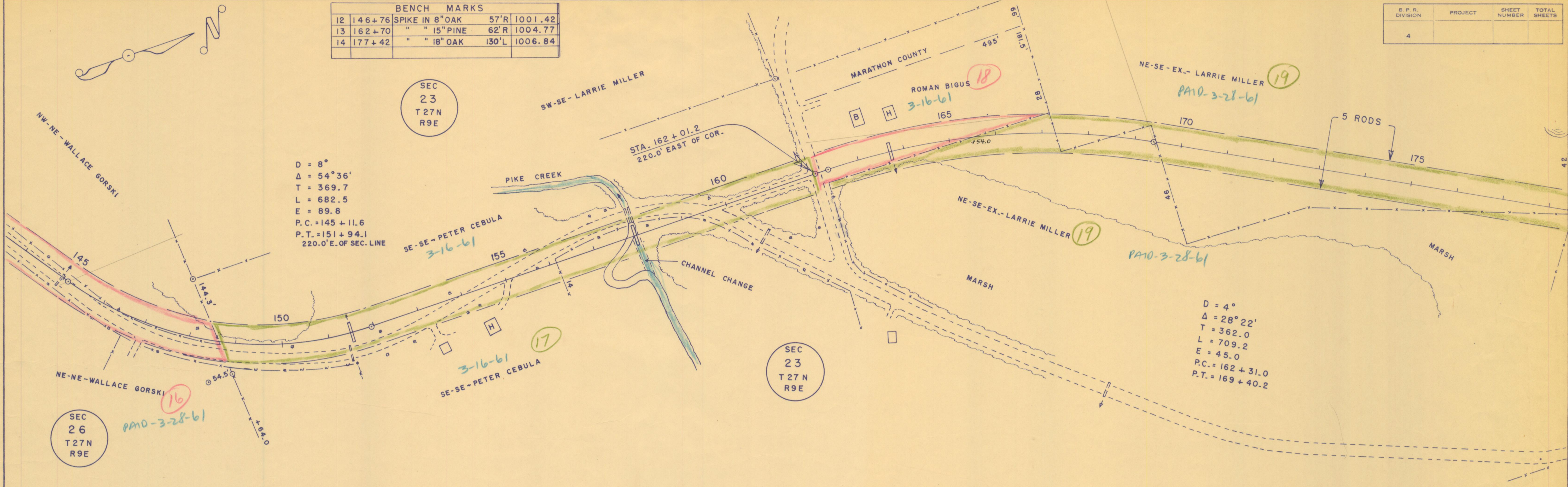


BENCH MARKS			
12	146+76	SPIKE IN 8" OAK	57'R 1001.42
13	162+70	" " 15" PINE	62'R 1004.77
14	177+42	" " 18" OAK	130'L 1006.84

B.P.R. DIVISION	PROJECT	SHEET NUMBER	TOTAL SHEETS
4			

PLAN  
 SURVEYED BY C. E. C.  
 DATE 5-60  
 PLOTTED BY C. E. C.  
 ALIGNMENT CHECKED BY C. E. C.  
 RT. OF WAY CHECKED BY C. E. C.

PROFILE  
 SURVEYED BY C. E. C.  
 DATE 5-60  
 PLOTTED BY C. E. C.  
 GRADES CHECKED BY C. E. C.  
 STRUCTURE NOTATIONS CHECKED BY C. E. C.

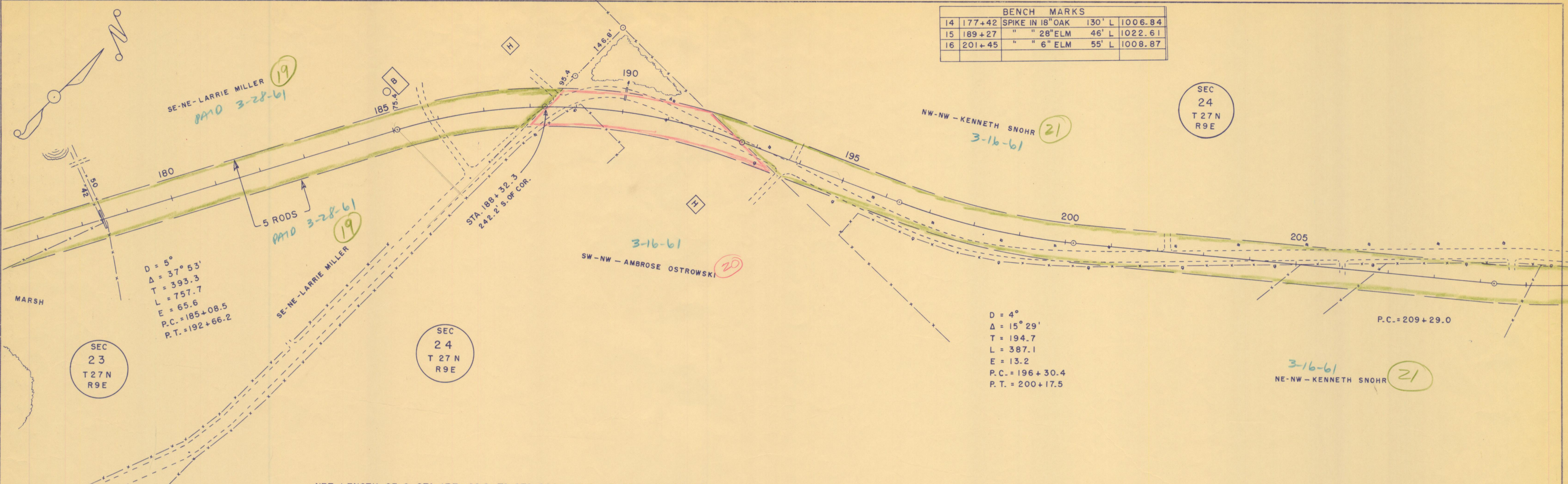


NET LENGTH OF C. STA. 145+11.6 TO STA. 177+00.0 = 3,188.4 LINEAR FT.



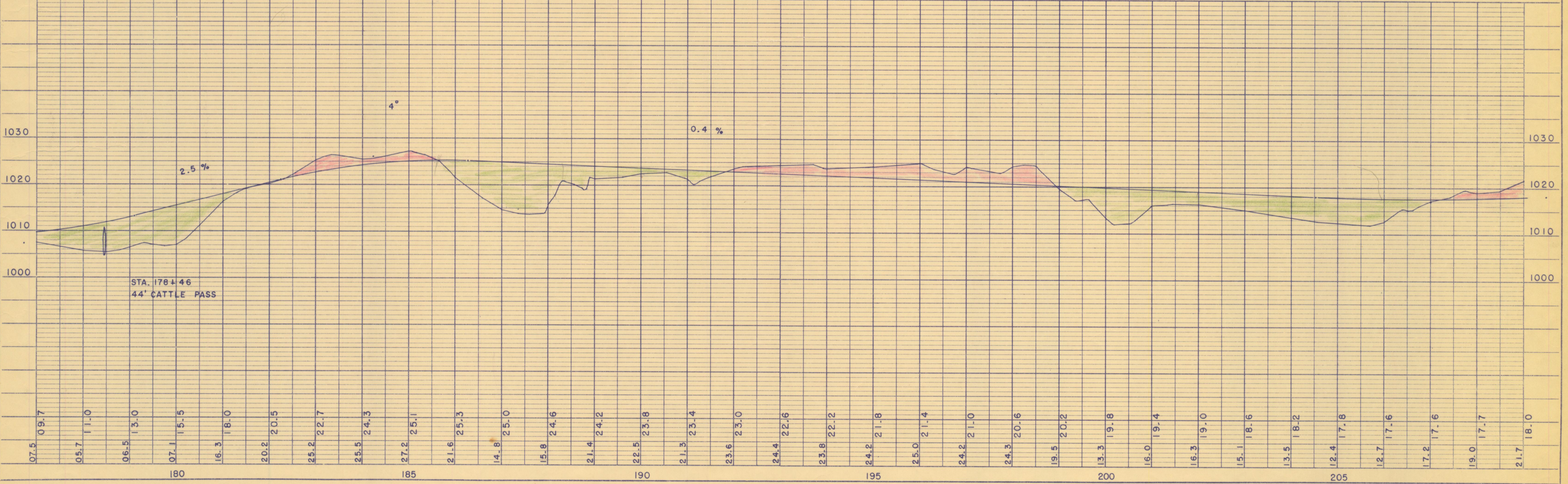
BENCH MARKS			
14	177+42	SPIKE IN 18" OAK	130' L 1006.84
15	189+27	" " 28" ELM	46' L 1022.61
16	201+45	" " 6" ELM	55' L 1008.87

DATE 5-60  
 BY C.E.C.  
 SURVEYED, PLOTTED, CHECKED, REVISIONS CHECKED, STRUCTURE NOTATIONS CHD.  
 PLAN NO.



NET LENGTH OF STA. 177+00.0 TO STA. 209+00.0 = 3,200 LINEAR FT.

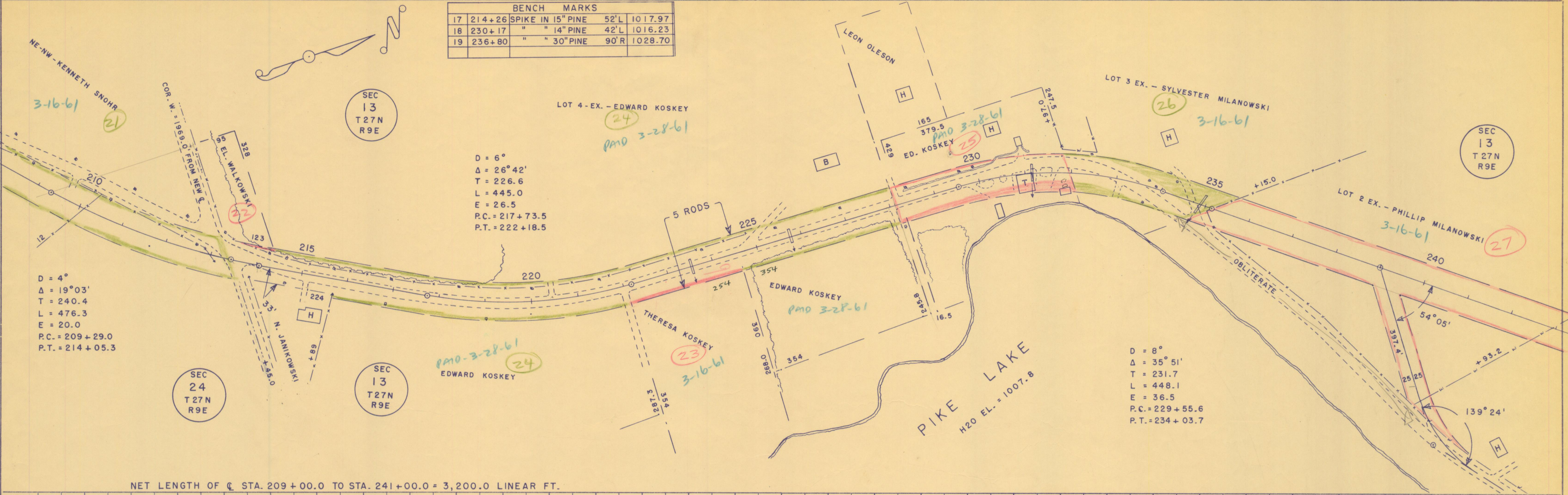
DATE 5-60  
 BY C.E.C.  
 SURVEYED, PLOTTED, CHECKED, REVISIONS CHECKED, STRUCTURE NOTATIONS CHD.  
 PROFILE NO.



BENCH MARKS				
17	214+26	SPIKE IN 15" PINE	52'L	1017.97
18	230+17	" 14" PINE	42'L	1016.23
19	236+80	" 30" PINE	90'R	1028.70

DATE: 6-60  
 BY: C.E.C.  
 SURVEYED, PLOTTED, CHECKED, BY: C.E.C.  
 NOTE BOOK NO.:

DATE: 6-60  
 BY: C.E.C.  
 SURVEYED, PLOTTED, CHECKED, BY: C.E.C.  
 NOTE BOOK NO.:



NET LENGTH OF C STA. 209+00.0 TO STA. 241+00.0 = 3,200.0 LINEAR FT.

