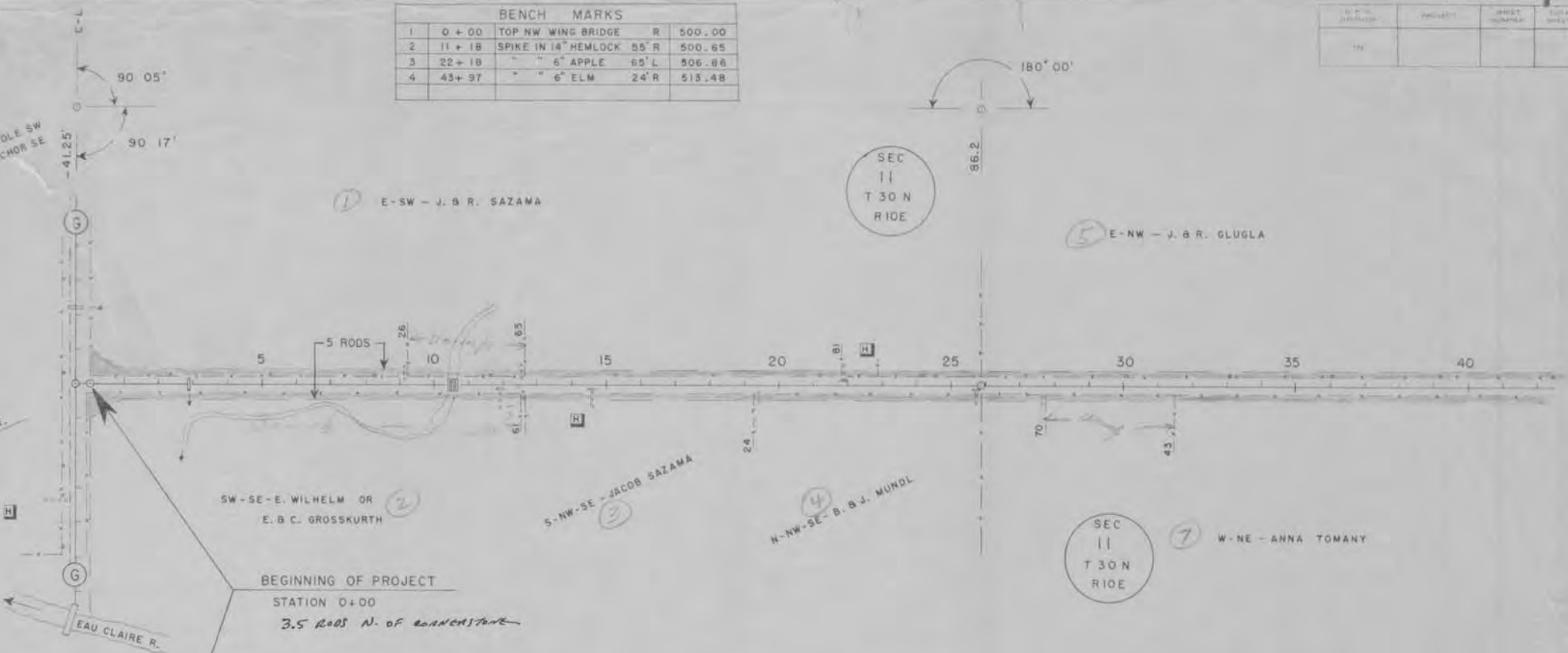
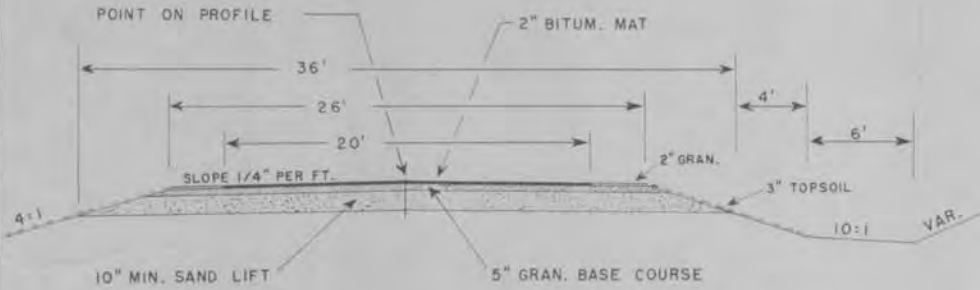


CORNERSTONE - G & Y
 38.8 TO P. POLE SW - 45.7
 36.9 TO ANCHOR EYE SE +5.3
 SET 6" SCREW 24.75 E & 24.75 N

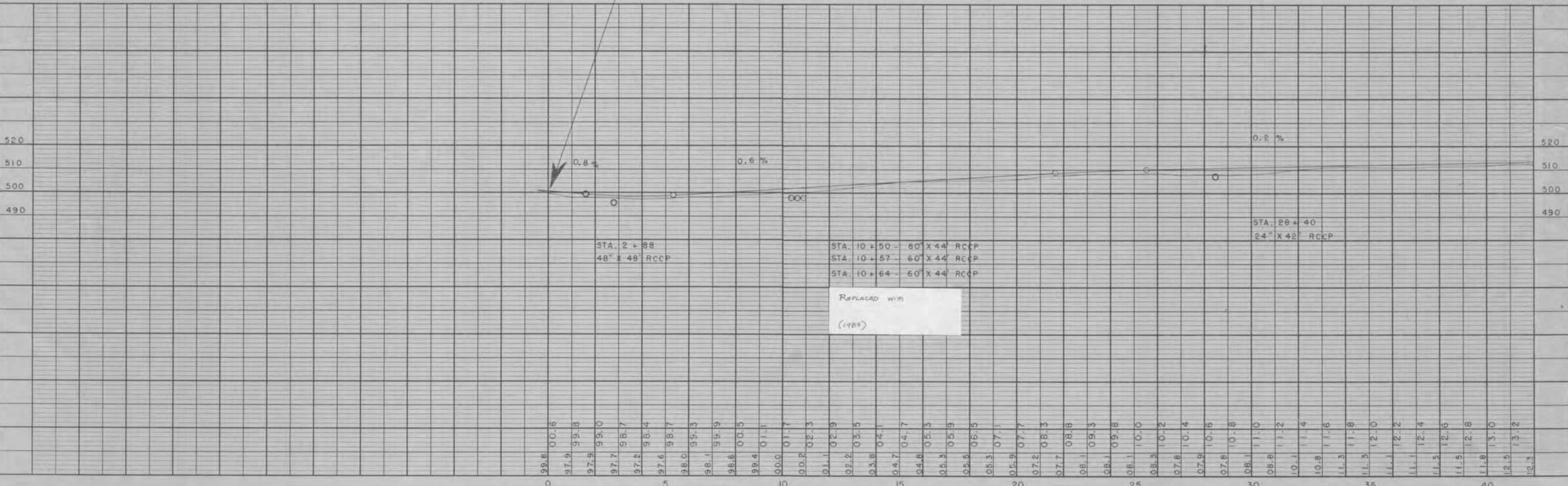
BENCH MARKS				
1	0+00	TOP NW WING BRIDGE	R	500.00
2	11+18	SPIKE IN 14" HEMLOCK	55' R	500.65
3	22+18	" " 6" APPLE	65' L	506.86
4	43+97	" " 6" ELM	24' R	513.48

DATE	PROJECT	SHEET NUMBER	TOTAL SHEETS
4-54			

TYPICAL SECTION



NOTE - COUNTY IN 1948 BOUGHT ON C.T.H. "G" PROJECT STRIP 3.5 RODS WIDE NORTH OF SEC. LINE



DATE: 4-54
 BY: C. E. C.
 SURVEYED: []
 PLAN: []

DATE: 4-54
 BY: C. E. C.
 PROFILE: []

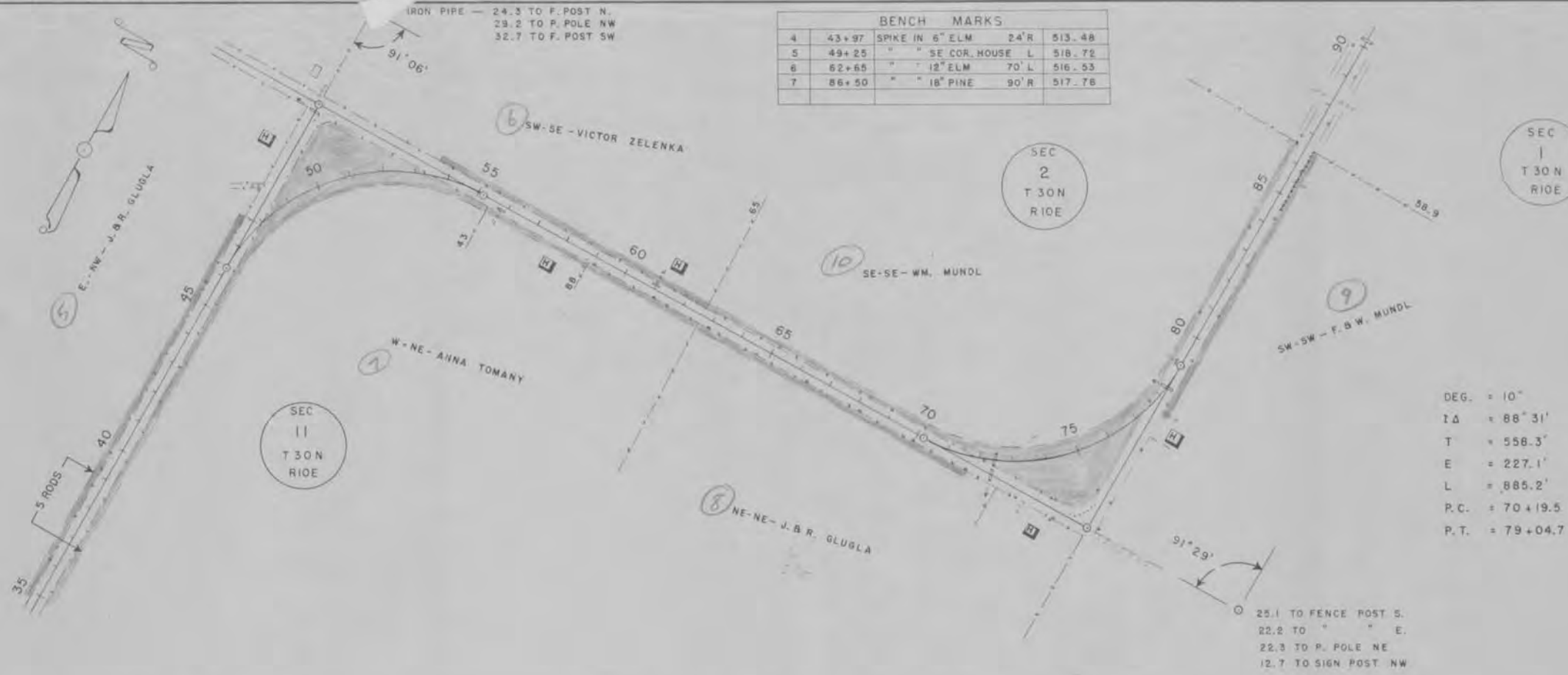
C.T.H. "Y" — HARRISON

DATE: 4-54
 BY: C. E. C.
 SURVEYOR: [blank]
 PLANNED: [blank]
 ALLOWED CHECKED: [blank]
 BY: [blank]

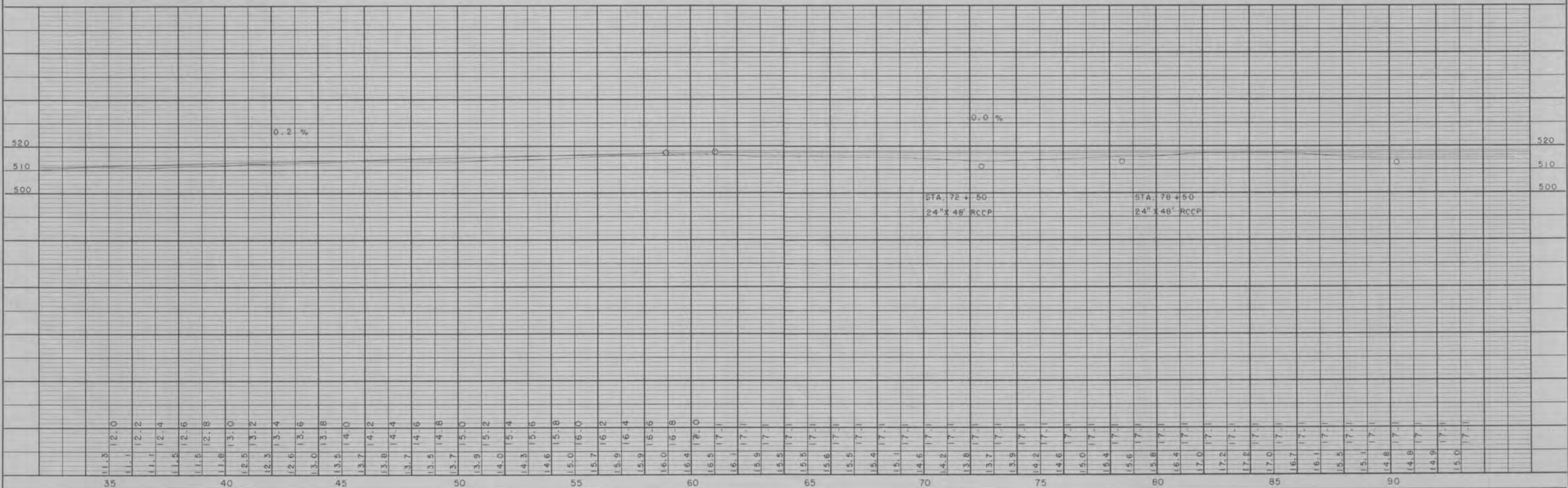
DEG. = 10°
 IΔ = 88° 54'
 T = 562.1'
 E = 229.7'
 L = 889.0'
 P.C. = 46 + 26.3
 P.T. = 55 + 15.3

BENCH MARKS				
4	43+97	SPIKE IN 6" ELM	24'R	513.48
5	49+25	" SE COR. HOUSE	L	518.72
6	62+65	" 12" ELM	70' L	516.33
7	86+50	" 18" PINE	90'R	517.76

DIST. DIVISION	MARK	SHEET NUMBER	TOTAL SHEETS



DATE: 4-54
 BY: C. E. C.
 SURVEYOR: [blank]
 PLANNED: [blank]
 CHECKED: [blank]
 BY: [blank]

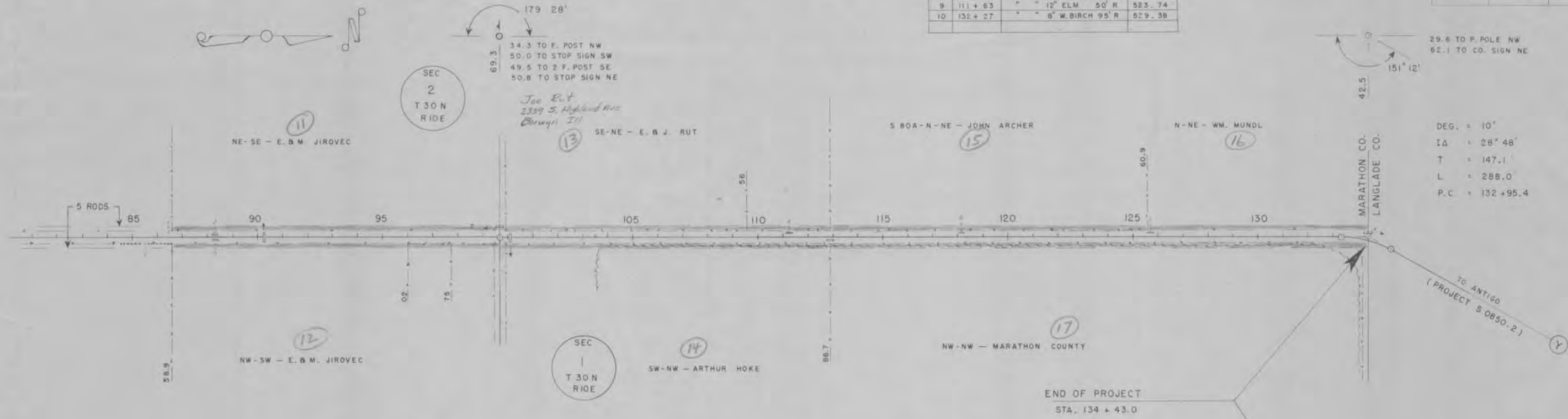


BENCH MARKS			
7	86+50	SPIKE IN 18" PINE	90' R 517.78
8	98+15	" " 18" PINE	33' L 516.77
9	111+63	" " 12" ELM	50' R 523.74
10	132+27	" " 8" W. BIRCH	95' R 529.38

DATE	BY	REVISION
4-56	C.E.C.	

DATE	BY	REVISION
4-56	C.E.C.	

DATE	BY	REVISION
4-56	C.E.C.	



TOTAL NET LENGTH OF PROJECT = 13,443.0 FT. = 2.546 MILES

