

COUNTY AND HIGHWAY	ROUTE AND SECTION	CLASS AND AGREEMENT		S.P.R. REGION DIVISION	SHEET NUMBER	TOTAL SHEETS
		STATE	FEDERAL			
37.6	1163.0		11.4	4 WIS.	1	13

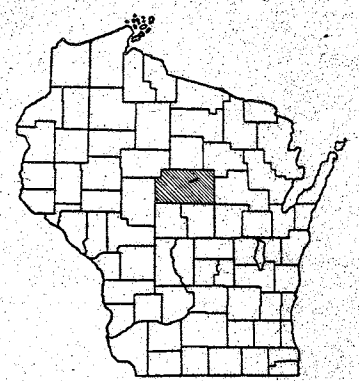
INDEX OF SHEETS

SHEET NO. 1	TITLE
SHEET NO. 1	TYPICAL CROSS SECTIONS
SHEET NO. 1	ESTIMATE OF QUANTITIES
SHEET NO. —	MISCELLANEOUS QUANTITIES
SHEET NO. —	RIGHT OF WAY PLAT
SHEET NO. 2-12	PLAN AND PROFILE STA. 30+00 TO STA. 344+25.4 = 3,344.5' NET LENGTH OF C
SHEET NO. 13	STANDARD DETAILS
SHEET NO. —	DRAINAGE STRUCTURES
SHEET NO. —	CROSS SECTIONS

STATE OF WISCONSIN
STATE HIGHWAY COMMISSION OF WISCONSIN

PLAN AND PROFILE OF PROPOSED
WAUSAU-C.T.H. "J" ROAD
 C.T.H. "Z"
MARATHON COUNTY

PROJECT S 1163(4)



ESTIMATE OF QUANTITIES

THIS PROJECT IS TO BE EXECUTED UNDER THE STANDARD SPECIFICATIONS FOR ROAD AND BRIDGE CONSTRUCTION OF THE STATE HIGHWAY COMMISSION OF WISCONSIN - EDITION OF 1963, APPROVED OCTOBER 16, 1963; FEDERAL AID REQUIRED CONTRACT PROVISIONS APPROVED OCTOBER 29, 1963, AND SPECIAL PROVISIONS AS ATTACHED TO PROPOSALS

ITEM NO.	ITEM	QUANTITY	UNIT
21101	PREPARATION OF FOUNDATION FOR BITUMINOUS PAVING	1	LUMP SUM
30401	GRAVEL OR CRUSHED STONE BASE COURSE	2,920	CU. YD.
40401	BITUMINOUS ROAD MIX SURFACE	77,644	SQ. YD.
40403	BITUMINOUS MATERIAL FOR SURFACE COURSE	121,400	GALLON
40406	AGGREGATES FOR BITUMINOUS ROAD MIX SURFACE	6,070	CU. YD.

NET C LENGTH = 31,342 LIN. FT.

NOTE: SHEETS 2 TO 12 INCLUDED TO SHOW PROFILE AND ALIGNMENT ONLY. OTHER INFORMATION NOT PERTINENT TO THIS CONTRACT.

STANDARD DETAIL DRAWINGS
 7-4.1.4 CONSTRUCTION BARRICADE

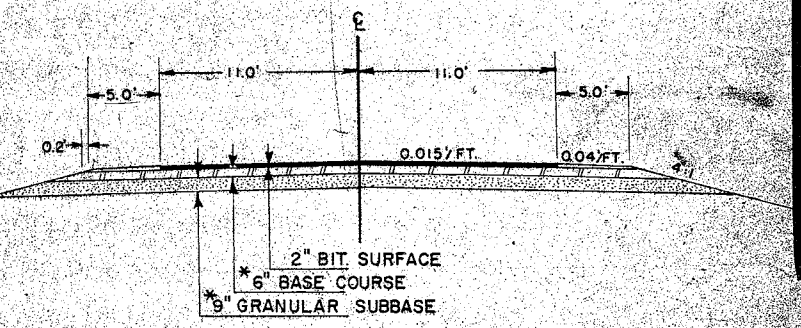
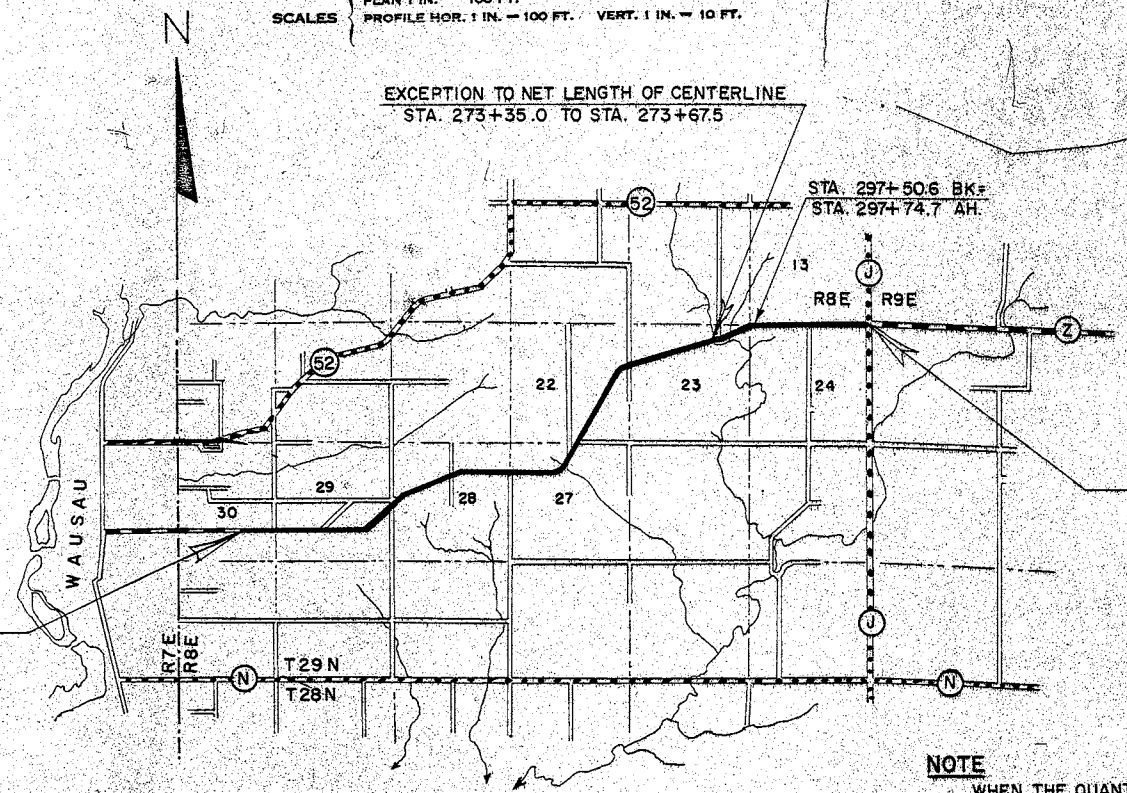
BEGINNING OF PROJECT S 1163(4)
 STA. 30+00.0 = 3,000' EAST OF NW COR. OF
 SO. 1/2 OF SO. 1/2 OF SEC. 30
 =BEGINNING OF PROJECT S 1163(3)

CONVENTIONAL SIGNS

STATE LINE	CULVERTS IN PLACE
COUNTY LINE	CULVERTS REQUIRED
TOWNSHIP OR RANGE LINE	DROP INLET
SECTION LINE	POWER POLE
NEW RIGHT OF WAY LINE	TELEPHONE OR TELEGRAPH POLE
PRESENT RIGHT OF WAY LINE	RIGHT OF WAY MARKERS
WIRE FENCE (WOVEN)	REFERENCE STAKE FOR HUBS ONLY
WIRE FENCE (BARBED)	MARSH
LOT LINE	HEDGE
CORPORATE OR CITY LIMITS	TREES
PROPERTY LINE	GROUND ELEVATION
TRAVELED WAY OR P.E.	GRADE ELEVATION
RAILROADS	
BASE OR SURVEY LINE	

PLAN 1 IN. = 100 FT.
 PROFILE HOR. 1 IN. = 100 FT. VERT. 1 IN. = 10 FT.

EXCEPTION TO NET LENGTH OF CENTERLINE
 STA. 273+35.0 TO STA. 273+67.5



*NOT PART OF THIS PROJECT (IN PLACE)

END OF PROJECT S 1163(4)
 STA. 344+25.4 = NE COR. OF SEC. 24
 =END OF PROJECT S 1163(3)

NOTE

WHEN THE QUANTITY OF THE ITEMS OF SUBBASE, BASE OR SURFACE COURSE IS MEASURED FOR PAYMENT BY THE TON OR CUBIC YARD, THE DEPTH OR THICKNESS OF THE COURSE SHOWN ON THE PLANS IS APPROXIMATE AND THE ACTUAL THICKNESS WILL DEPEND ON THE DISTRIBUTION OF THE MATERIAL DIRECTED BY THE ENGINEER.

LAYOUT

SCALE 1" = ONE MILE

TOTAL NET LENGTH OF CENTERLINE = 5.936 MI.

STATE HIGHWAY COMMISSION OF WISCONSIN
 MADISON, WIS.

SURVEYOR: _____
 DIVISION COMPUTER: M. O. CHECKER *W.H.B.*
 DISTRICT CHECKER: _____

CORRECT: _____
 DATE: *4/15/64* *W.H.B.* DISTRICT ENGINEER

RECOMMENDED FOR APPROVAL:
 DATE: *4/15/64* *E.J. B. [Signature]* DESIGN ENGINEER

APPROVED: _____
 DATE: *4/16/64* *E.C. [Signature]* STATE HIGHWAY ENGINEER

DEPARTMENT OF COMMERCE
 BUREAU OF PUBLIC ROADS

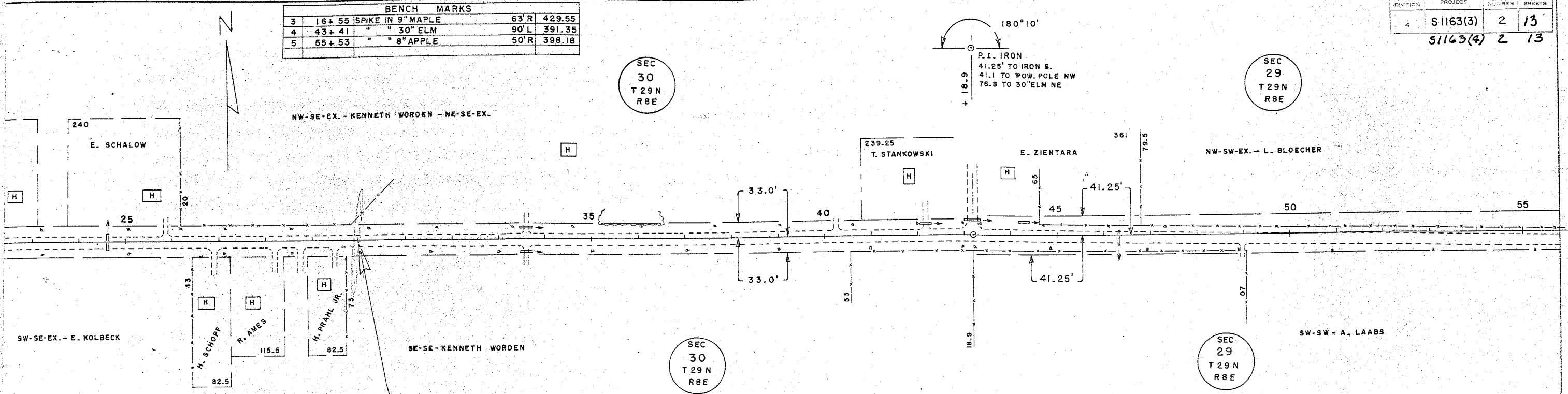
APPROVED: _____ DATE: _____

DIVISION ENGINEER

S 1163(4)

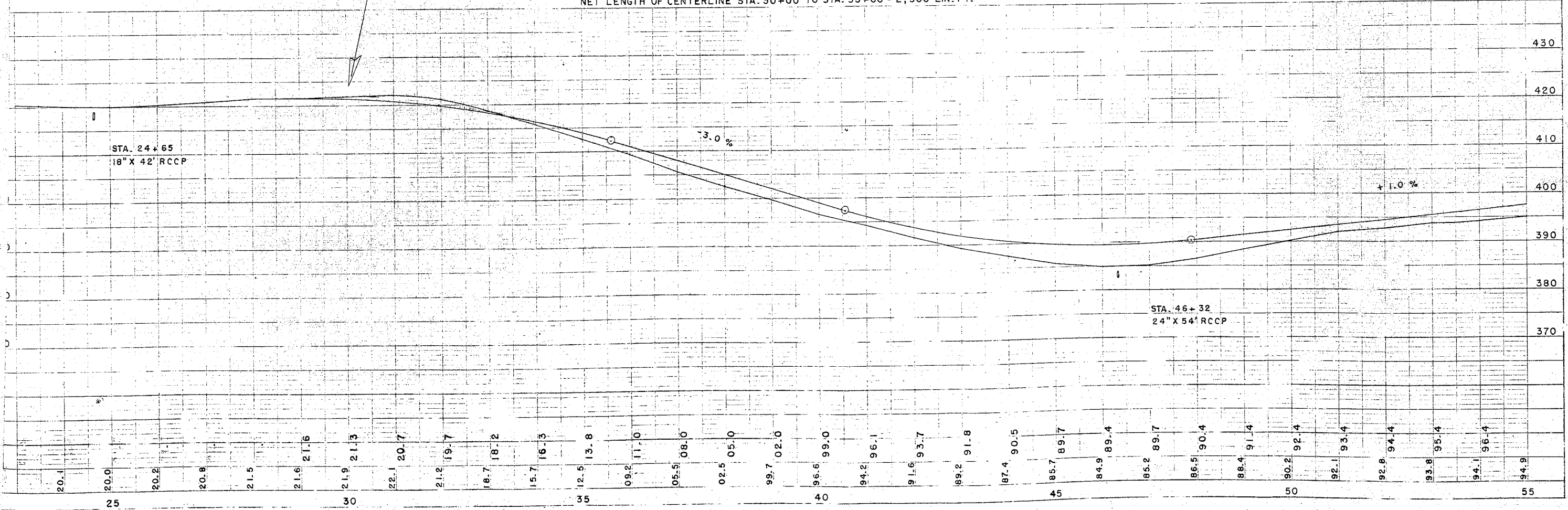
BENCH MARKS			
3	16+55	SPIKE IN 9" MAPLE	63'R 429.55
4	43+41	" " 30" ELM	90'L 391.35
5	55+53	" " 8" APPLE	50'R 398.18

DIVISION	PROJECT	SHEET NUMBER	TOTAL SHEETS
4	S1163(3)	2	13
51163(4)		2	13



BEGINNING OF PROJECT S 1163 (3)(4)
 STA. 30+00 = 3,000' EAST OF NW COR. OF SO. 1/2 OF SO. 1/2 SEC. 30

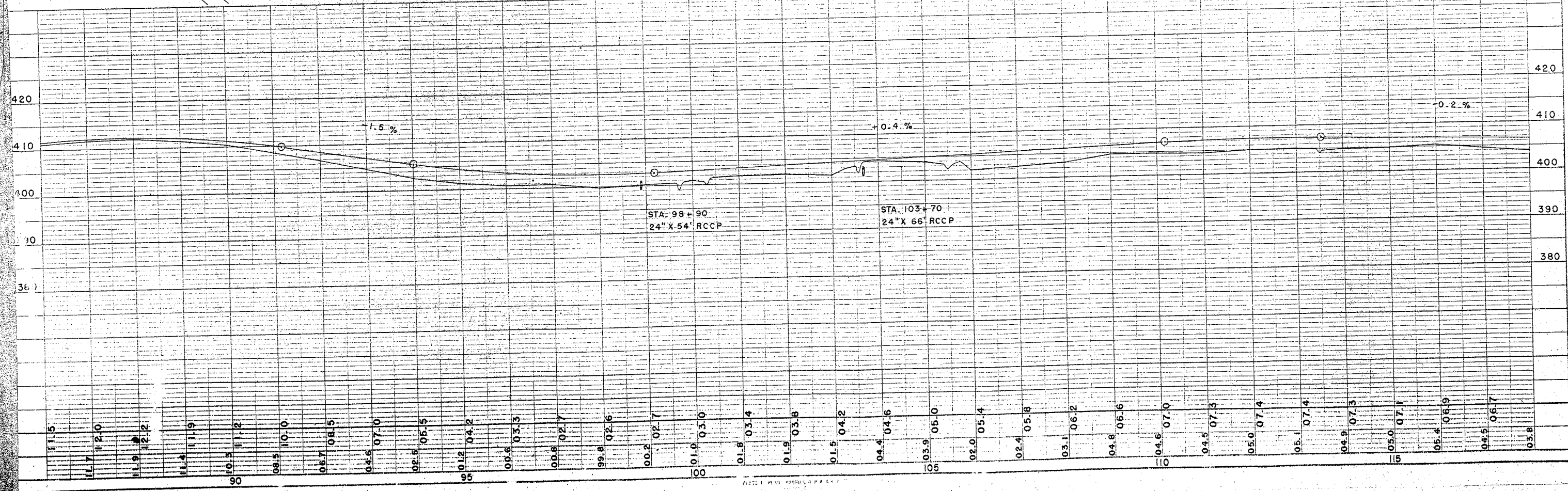
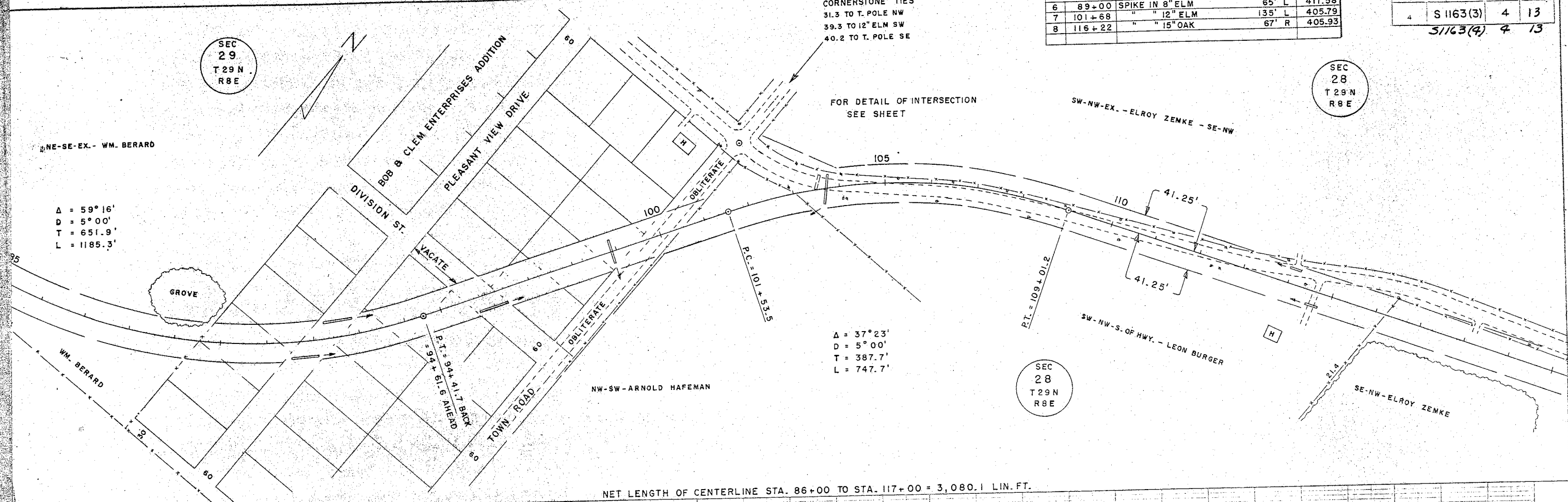
NET LENGTH OF CENTERLINE STA. 30+00 TO STA. 55+00 = 2,500 LIN. FT.



C.T.H. "Z" - TOWN OF WAUSAU

BENCH MARKS			
6	89+00	SPIKE IN 8" ELM	411.58
7	101+68	" " 12" ELM	405.79
8	116+22	" " 15" OAK	405.93

S. P. R. DIVISION	PROJECT	SHEET NUMBER	TOTAL SHEETS
4	S 1163(3)	4	13
S 1163(4)		4	13



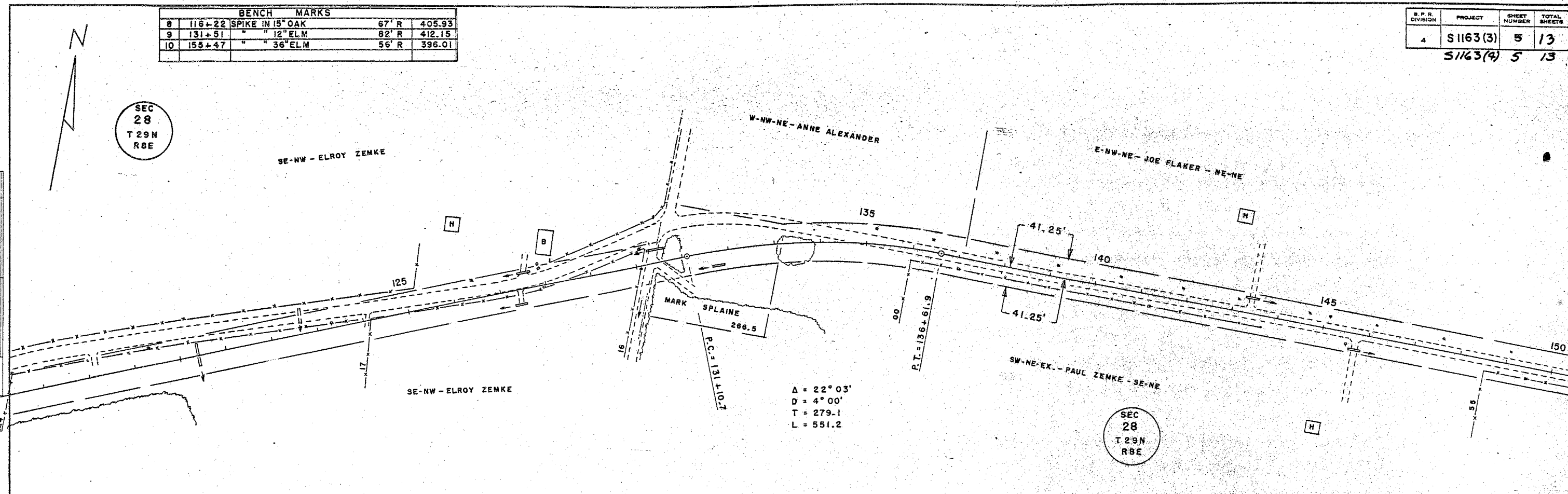
C.T.H. 'Z'

BENCH MARKS				
8	116+22	SPIKE IN 15" OAK	67' R	405.93
9	131+51	" " 12" ELM	82' R	412.15
10	155+47	" " 36" ELM	56' R	396.01

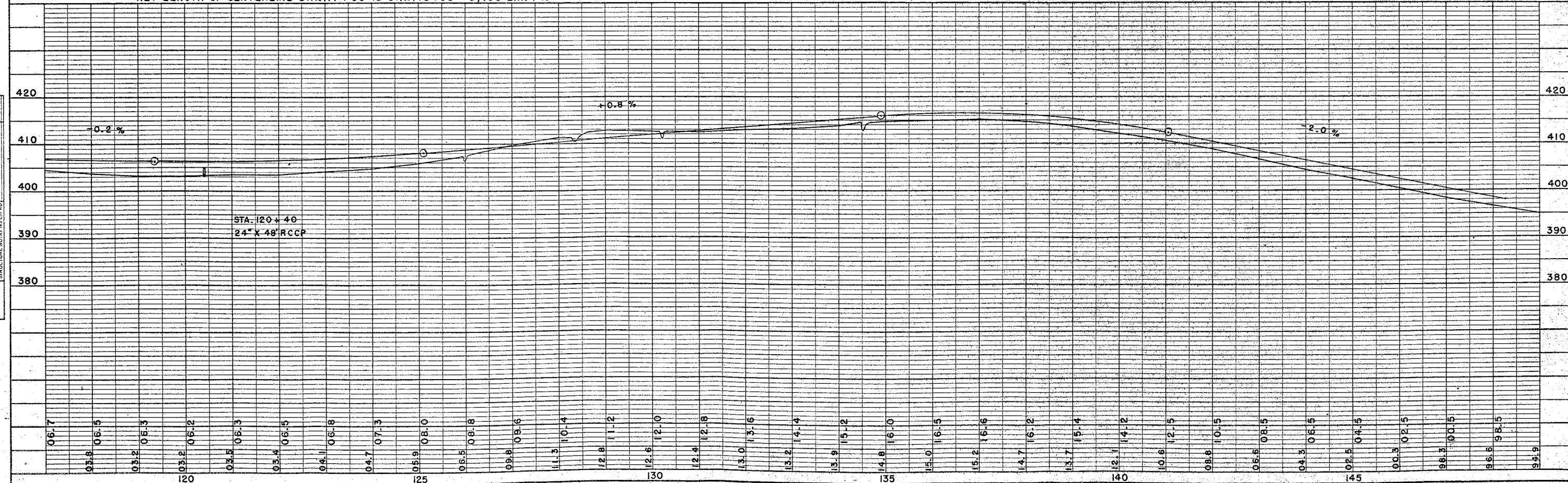
S. P. R. DIVISION	PROJECT	SHEET NUMBER	TOTAL SHEETS
4	S1163(3)	5	13
		S1163(4)	5 13

PLAN SURVEYED, PLOTTED, CHECKED, BY DATE
 NOTE BOOK NO. OF WAY CHECKED.

PROFILE SURVEYED, PLOTTED, GRADES CHECKED, STRUCTURE NOTATIONS CHECKED, BY DATE
 C.E.C. 10-82



NET LENGTH OF CENTERLINE STA. 117+00 TO STA. 148+00 = 3,100 LIN. FT.



BENCH MARKS			
12	181+12	SPIKE IN 12" ELM	54'R 377.58
13	192+00	" " 12" SPRUCE	41'R 415.81
14	216+14	" " 8" MAPLE	48'R 415.79

D.P.R. DIVISION	PROJECT	SHEET NUMBER	TOTAL SHEETS
4	S1163(3)	7	13
			31163(4) 7 13

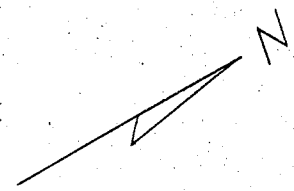
SEC. 27
T 29N
R 8E

SEC. 22
T 29N
R 8E

SEC 27
T 29N
R 8E

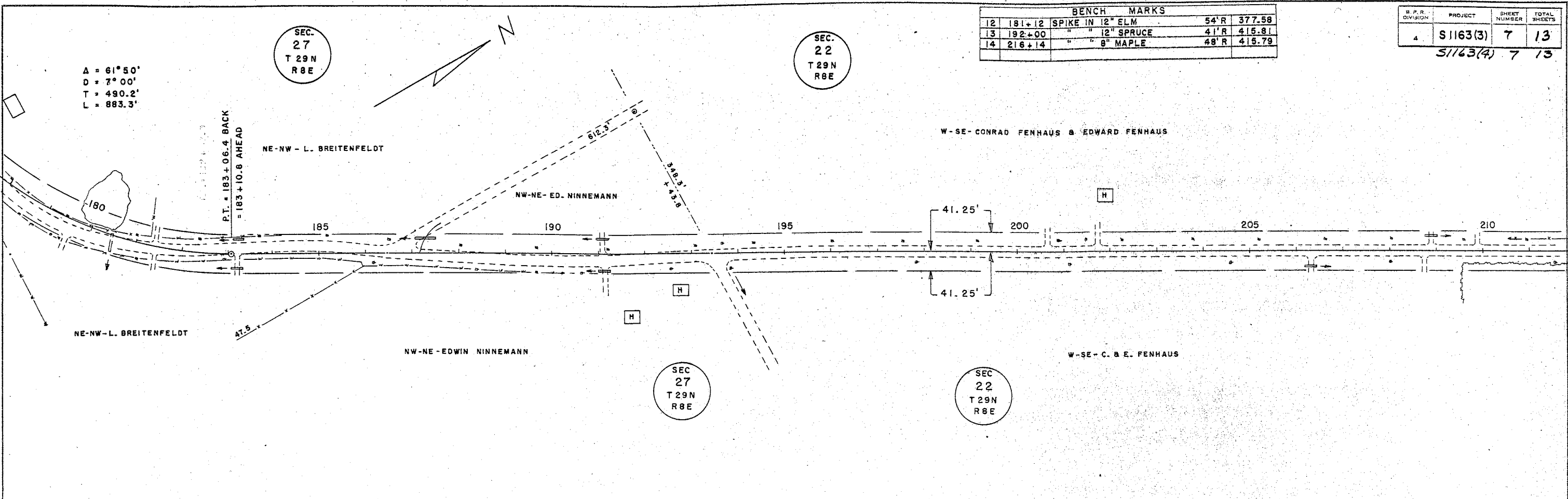
SEC 22
T 29N
R 8E

A = 61° 50'
D = 7° 00'
T = 490.2'
L = 883.3'

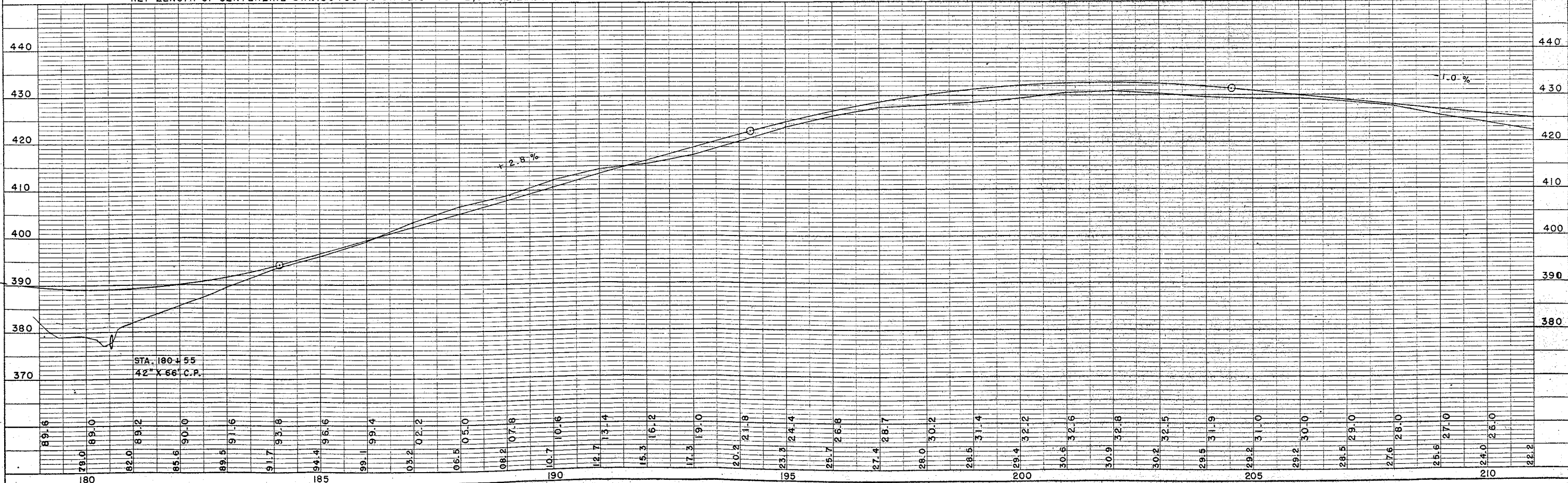


PLAN
SURVEYED
PLOTTED
ALIGNMENT CHECKED
NOTE BOOK
NO. 10-62

PROFILE
GRADES
NOTED
NOTE BOOK
NO. 10-62



NET LENGTH OF CENTERLINE STA. 180+00 TO STA. 210+00 = 2,995.6 LIN. FT.

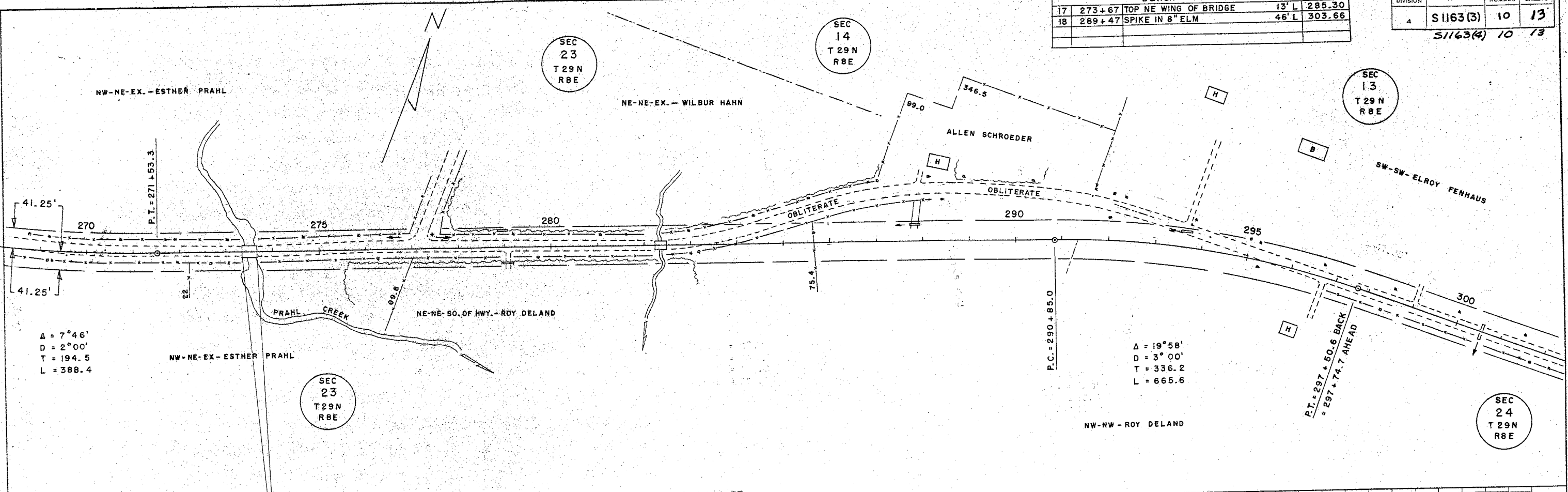


C.T.H. "Z"

BENCH MARKS				
17	273+67	TOP NE WING OF BRIDGE	13' L	285.30
18	289+47	SPIKE IN 8" ELM	46' L	303.66

E. P. I. DIVISION	PROJECT	SHEET NUMBER	TOTAL SHEETS
4	S1163(3)	10	13

S1163(4) 10 13



NET LENGTH OF CENTERLINE STA. 270+00 TO STA. 300+00 = 2,943.4 LIN. FT.

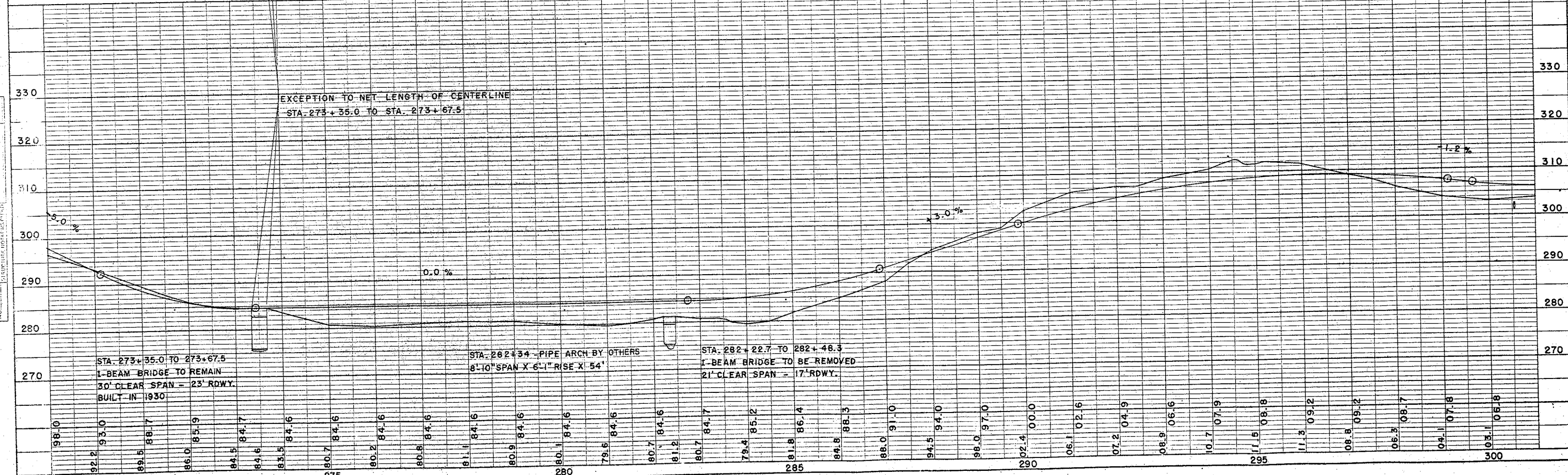


PLATE 1 - PLAN - PROFILE OF BRIDGE

NOTE: BOOK NUMBER, CHECKED, PL. 77, MAY CHECKED, NO.

TITLE:

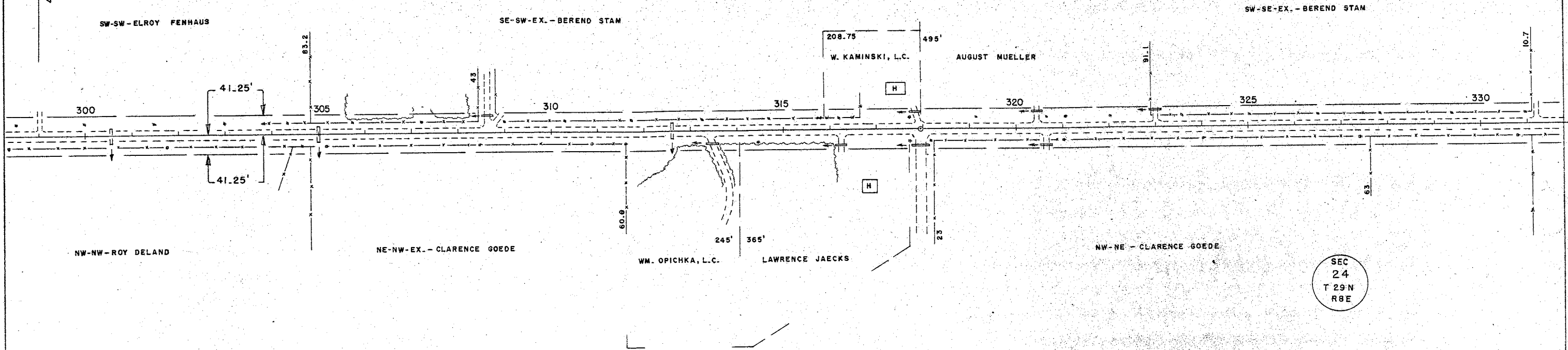
C.T.H. "Z"

S.P.R. DIVISION	PROJECT	SHEET NUMBER	TOTAL SHEETS
4	S 1163(3)	11	13
	S 1163(4)	11	13

BENCH MARKS			
19	307+84	SPIKE IN 30" MAPLE	62' R 313.45
20	322+17	" " 15" MAPLE	56' L 347.98

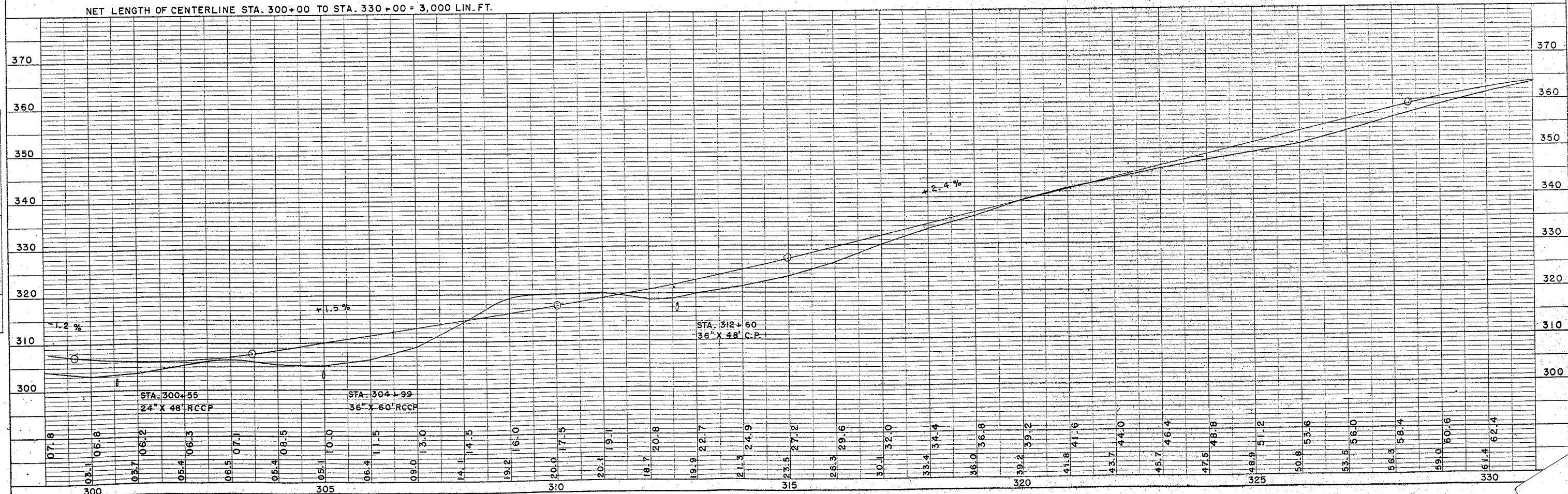
SEC
13
T 29 N
R 8 E

179° 27'
CORNERSTONE
41.25' TO IRON N.
50.0' TO BLDG. SW
81.2' TO BLDG. NW
68.9' TO 20" MAPLE SW
51.6' TO 15" ELM SE



SEC
24
T 29 N
R 8 E

NET LENGTH OF CENTERLINE STA. 300+00 TO STA. 330+00 = 3,000 LIN. FT.



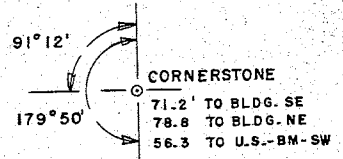
PLAN
CHECKED
PLOTTED
NOTE BOOK
NO. OF WA CHECKED

PROFILE
DRAWN
CHECKED
NOTE BOOK
NO. OF WA CHECKED

C.T.H. "Z"

D.P.R. DIVISION	PROJECT	SHEET NUMBER	TOTAL SHEETS
4	S 1163(3)	12	13
	S 1163(4)	12	13

BENCH MARKS			
20	322 + 17	SPIKE IN 15" MAPLE	56'L 347.98
21	346 + 07	" " 6" OAK	40'R 351.12



SEC 13
T 29 N
R 8 E

SEC 19
T 29 N
R 9 E

SEC 24
T 29 N
R 8 E

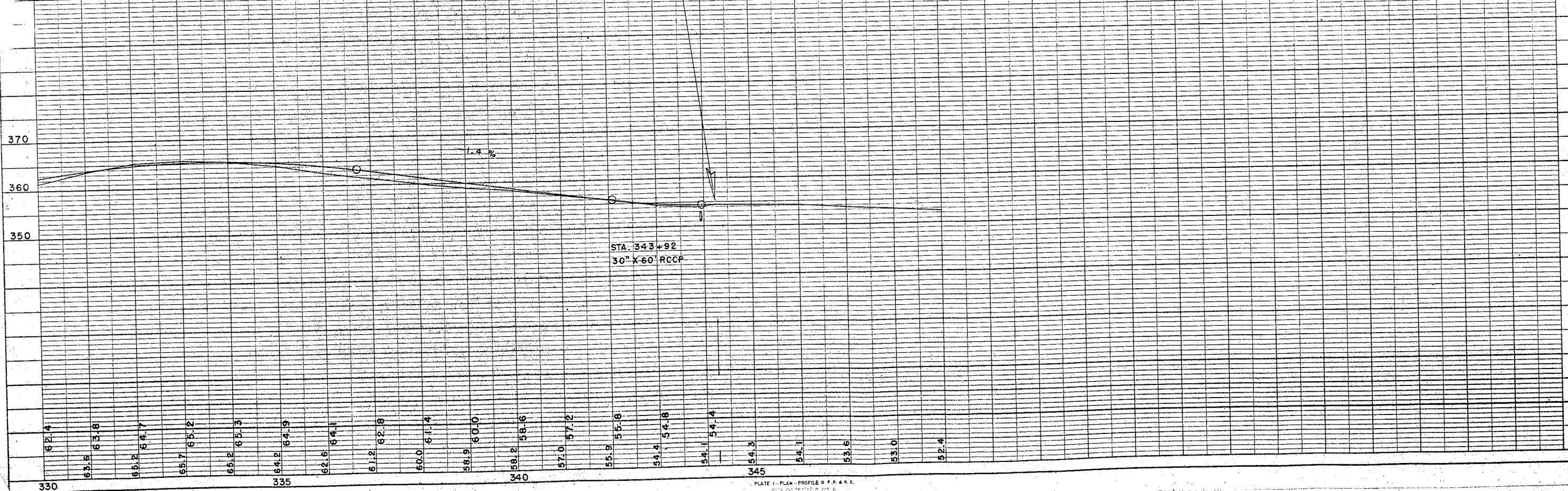
SE-SE-BEREND STAM

NE-NE-HENRY SCHLUND, L.C.

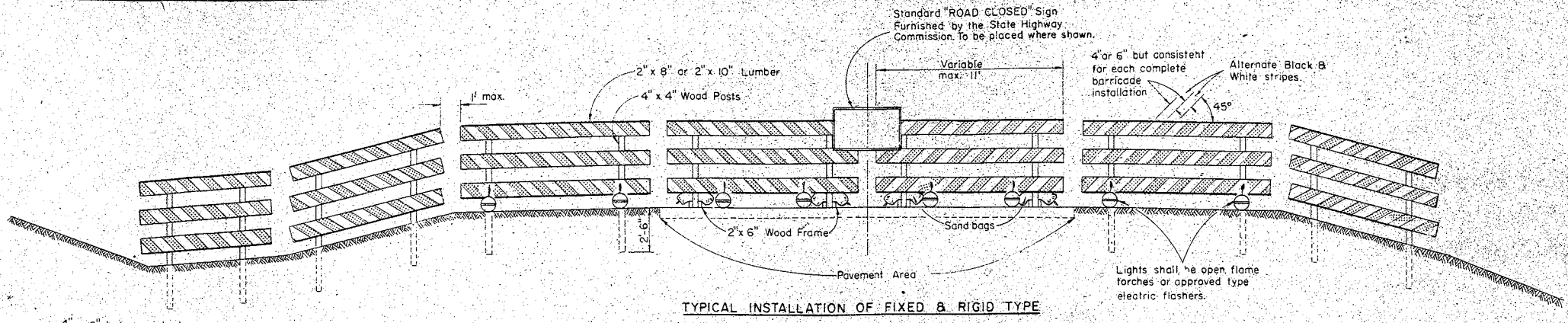
TYPE "E" INTERSECTION
SEE DETAIL

END OF PROJECT S 1163 (3)(4)
 STA. 344 + 25.4 = NE CORNER OF SEC. 24
 = STA. 347 + 08.4 PROJECT S 0531 5

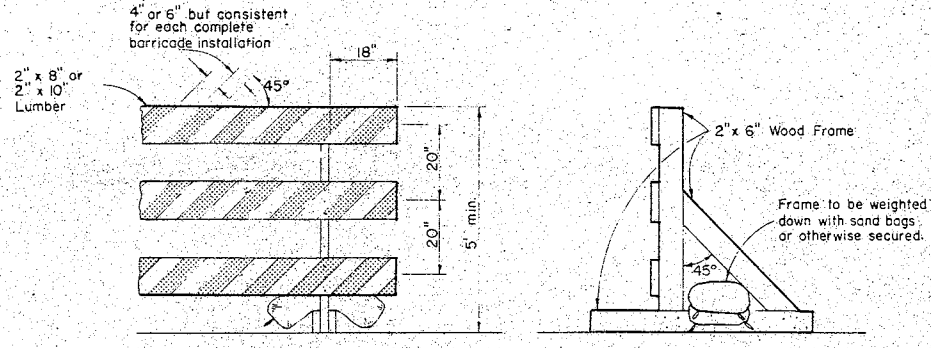
NET LENGTH OF CENTERLINE STA. 330 + 00 TO STA. 344 + 25.4 = 1,425.4 LIN. FT.



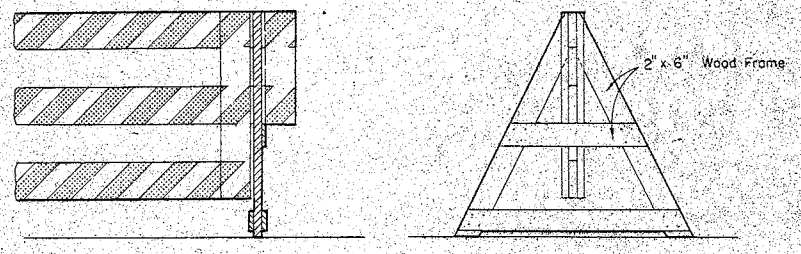
NOTE BOOK
 NO. _____
 PLOTTED
 GRADES CHECKED
 BY _____
 DATE _____
 APPROVED
 BY _____
 DATE _____



TYPICAL INSTALLATION OF FIXED & RIGID TYPE

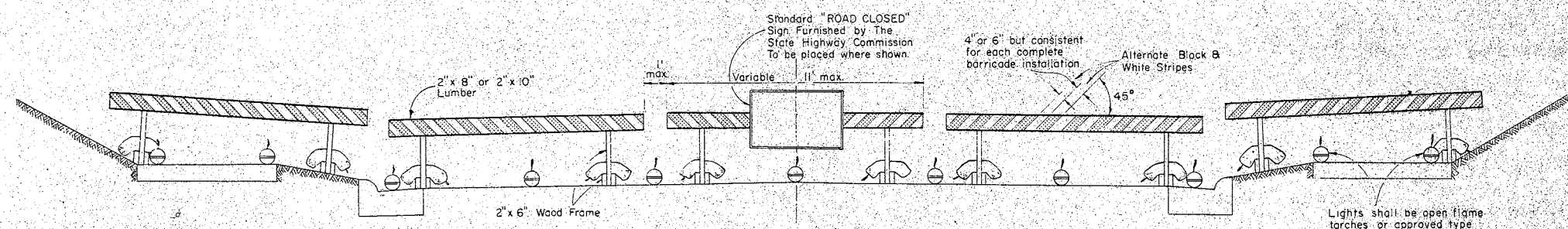


ALTERNATE TYPE INSTALLATION (RIGID)

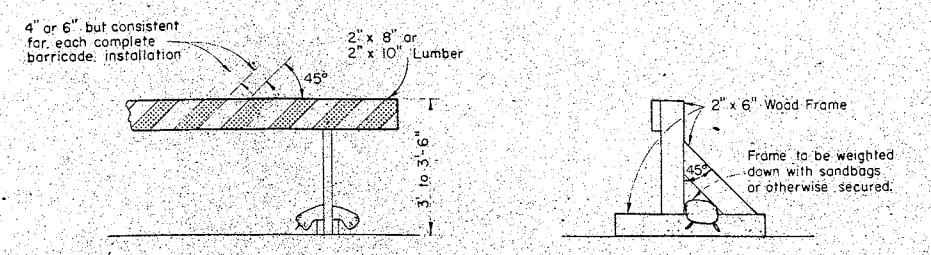


ALTERNATE TYPE INSTALLATION (DEMOUNTABLE)

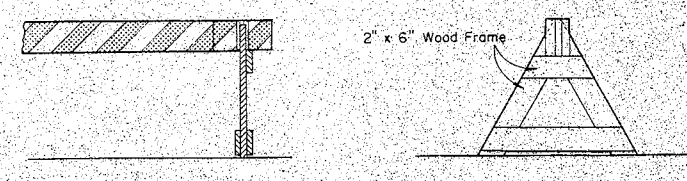
CLASS I BARRICADE



TYPICAL INSTALLATION OF RIGID TYPE



ALTERNATE TYPE INSTALLATION (RIGID)



ALTERNATE TYPE INSTALLATION (DEMOUNTABLE)

CLASS II BARRICADE

GENERAL NOTES:

The Contractor shall construct, place and maintain barricades as shown on this drawing and as required by the Standard Specifications for the duration of the project at all points of highway closure. Barricades shall be painted as shown hereon and structurally maintained for maximum visibility at all times, for the duration of the respective project.

CLASS I BARRICADE

Shall be used at points of closure where road is closed to traffic. Gates, movable sections of barricade shall be provided when necessary, for access equipment or other authorized vehicles only.

CLASS II BARRICADE

May be used only where the hazard to traffic is relatively small, and for the more or less continuous delimiting of a restricted roadway, or for temporary daytime use.

LUMBER & FABRICATION

Lumber shall be of a grade structurally sound and sufficiently rigid to satisfactorily support and maintain the purpose and intent of a barricade for the duration of the project. The fabrication of the barricade shall be in accord with good pertinent working practices.

PAINTING

Barricades shall be painted as shown hereon in alternate black and white stripes. Black stripes shall be painted with weather resistant and durable paint. White stripes shall be painted a prime coat of good grade wood primer followed by two coats of white 'Cody Reflective Liquid' (Minnesota Mining or equivalent), or reflective sheeting wide angle, flat top 'Scotchlite' brand material (Minnesota Mining Co.) or equivalent.

DIRECTION OF DIAGONAL STRIPES

Where a barricade extends entirely across the roadway and no vehicle access is permitted, the stripes shall slope downward toward the highway centerline. Where vehicle access is permitted, the stripes shall slope downward in the direction toward which vehicles must turn in detouring. Where both right and left turns are provided for, the stripes shall slope downward in both directions from the center.

MEASUREMENT & PAYMENT

All barricades, unless otherwise provided for in the plans and/or special provisions shall be furnished, placed, and maintained as noted above, and no additional compensation will be allowed, but shall be construed to be included in the price bid for other items.

NOTE:

Lighting devices for barricades shall conform to the requirements of the Standard Specifications.

NOTE:

All lumber or timber dimensions shown hereon are nominal.

CONSTRUCTION BARRICADE	
STATE HIGHWAY COMMISSION OF WISCONSIN	
RECOMMENDED FOR APPROVAL:	
DATE: 2-5-63	J. D. Pitt ENGINEER OF DISTRICT
APPROVED:	
DATE: 2/6/63	C. E. Patterson STATE HIGHWAY ENGINEER
PLATE NO. 7-4.1	