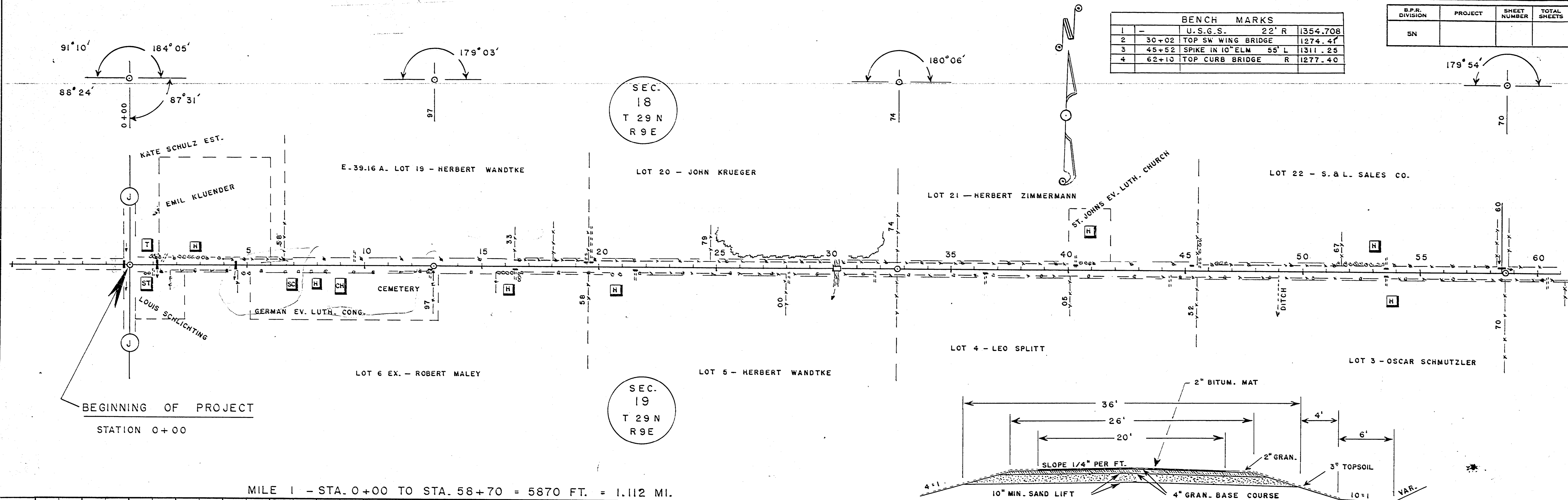


PLAN	DATE
SURVEYED	BY
NOTE BOOK	C. E. C.
ALIGNMENT CHECKED	
RT. OF WAY CHECKED	
NO.	

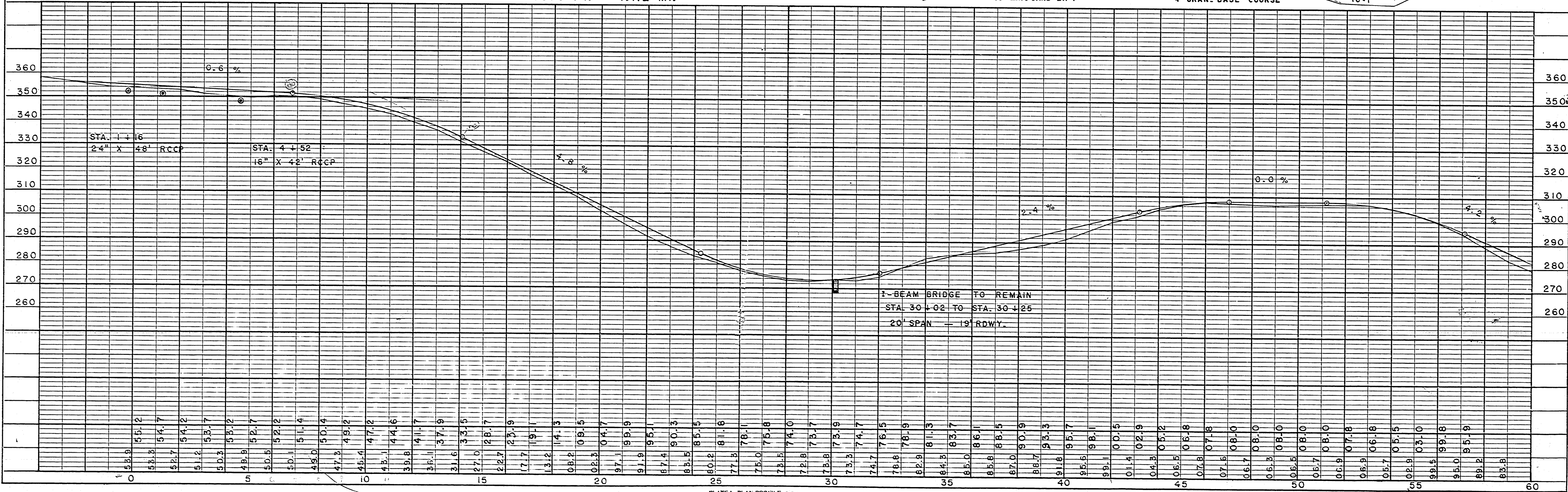
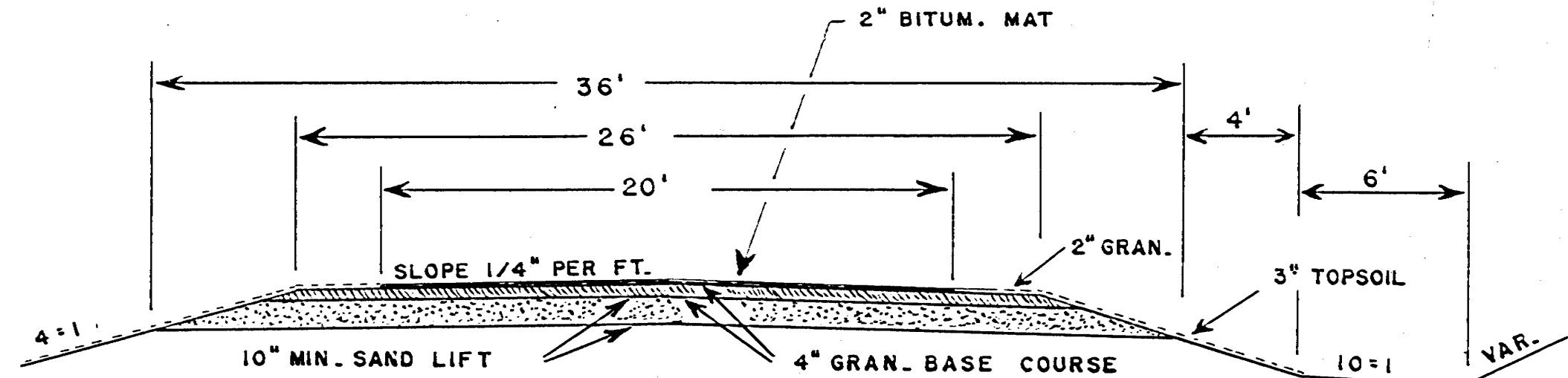
PROFILE	DATE
SURVEYED	BY
NOTE BOOK	C. E. C.
GRADES CHECKED	
S.M. & NOTE	
STRUCTURE STATISTICS CHECKED	
NO.	



BENCH MARKS			
1	-	U.S.G.S. 22' R	1354.708
2	30+02	TOP SW WING BRIDGE	1274.41
3	45+52	SPIKE IN 10" ELM 55' L	1311.25
4	62+10	TOP CURB BRIDGE R	1277.40

B.P.R. DIVISION	PROJECT	SHEET NUMBER	TOTAL SHEETS
5N			

MILE 1 - STA. 0+00 TO STA. 58+70 = 5870 FT. = 1.112 MI.

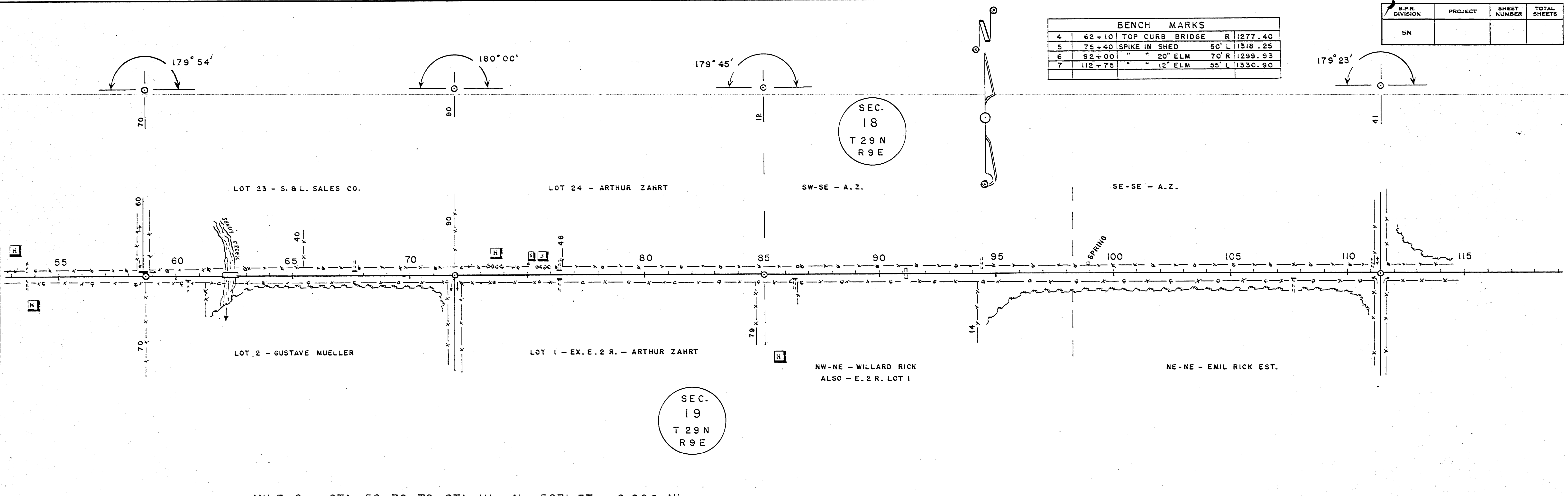


DATE 5-62
 BY C.E.C.
 SURVEYED, PLOTTED, ALIGNED, CHECKED, NO. OF WAK CHECKED

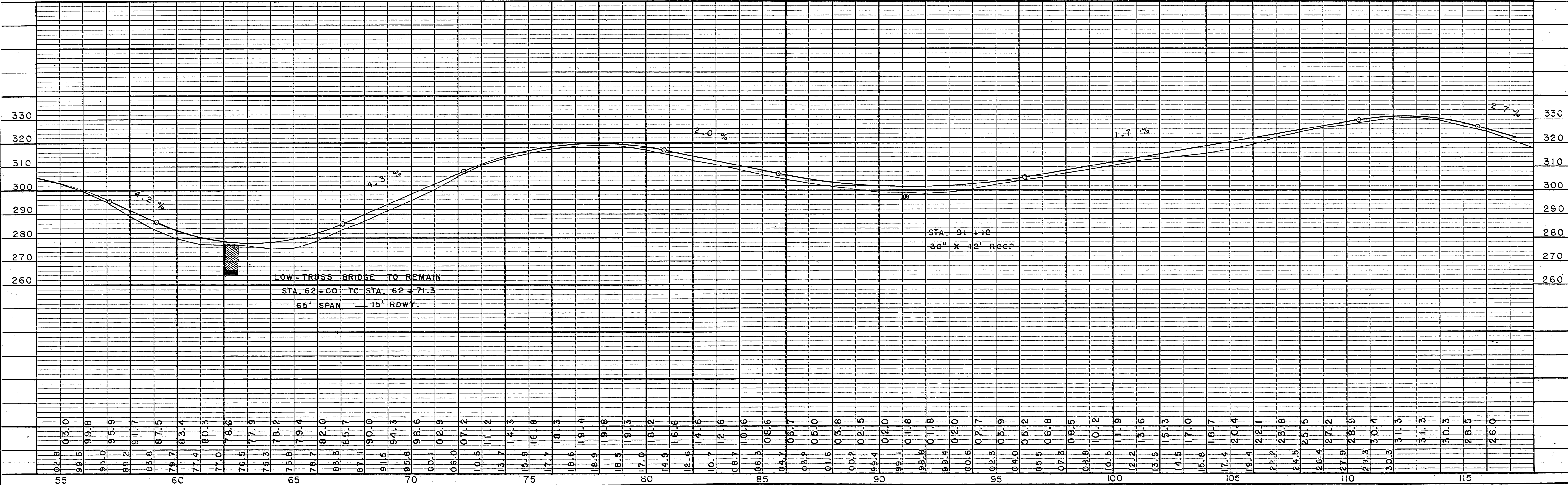
DATE 5-62
 BY C.E.C.
 PROFILE SURVEYED, PLOTTED, GRADES CHECKED, STRUCTURE NOTATIONS CHKD.

BENCH MARKS			
4	62+10	TOP CURB BRIDGE	R 1277.40
5	75+40	SPIKE IN SHED	50' L 1318.25
6	92+00	" " 20" ELM	70' R 1299.93
7	112+75	" " 12" ELM	55' L 1330.90

B.P.R. DIVISION	PROJECT	SHEET NUMBER	TOTAL SHEETS
5N			



MILE 2 - STA. 58+70 TO STA. 111+41 = 5271 FT. = 0.998 MI.

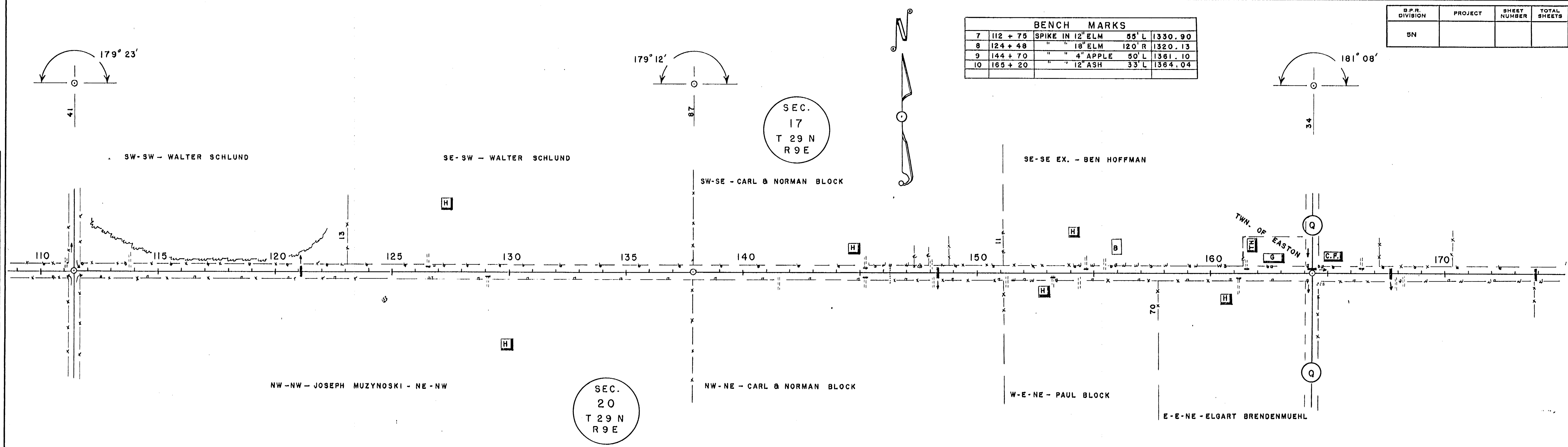


B.P.R. DIVISION	PROJECT	SHEET NUMBER	TOTAL SHEETS
5N			

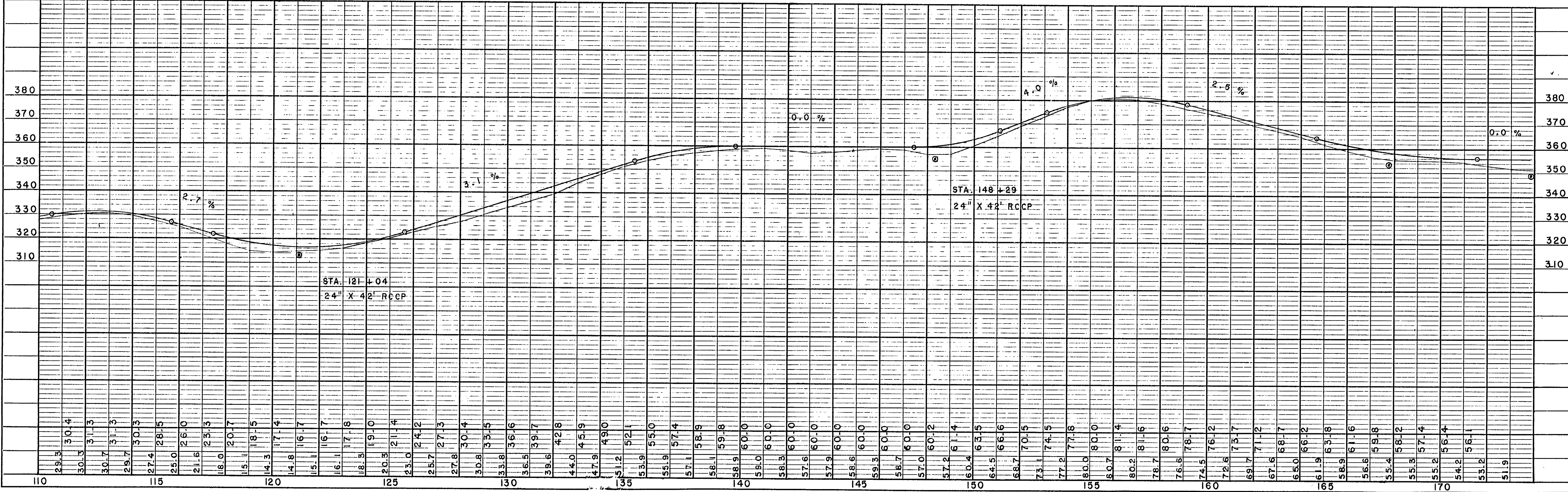
BENCH MARKS			
7	112 + 75	SPIKE IN 12' ELM	55' L 1330.90
8	124 + 48	" 18' ELM	120' R 1320.13
9	144 + 70	" 4" APPLE	50' L 1361.10
10	165 + 20	" 12" ASH	33' L 1364.04

PLAN	SURVEYED	DATE
NOTE BOOK NO.	BY C.E.C.	7-52

PROFILE	SURVEYED	DATE
NOTE BOOK NO.	BY C.E.C.	5-52



MILE 3 - STA. 111+41 TO STA. 164+34 = 5293 FT. = 1.002 MI.

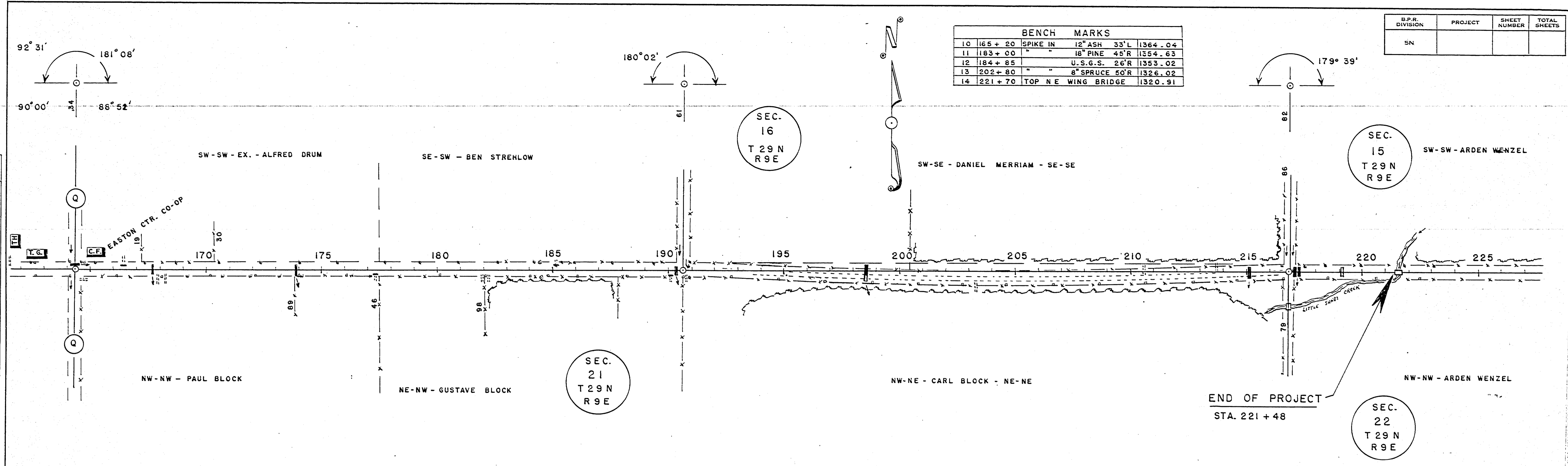


B.P.R. DIVISION	PROJECT	SHEET NUMBER	TOTAL SHEETS
5N			

BENCH MARKS			
10	165 + 20	SPIKE IN	12" ASH 33'L 1364.04
11	183 + 00	"	18" PINE 45'R 1354.63
12	184 + 85	"	U.S.G.S. 26'R 1353.02
13	202 + 80	"	8" SPRUCE 50'R 1326.02
14	221 + 70	TOP N E WING BRIDGE	1320.91

PLAN	DATE
SURVEYED BY C. E. C.	7-52
NOTE BOOK NO.	
ALLOTTED CHECKED	
REL. OF WAY CHECKED	

PROFILE	DATE
SURVEYED BY C. E. C.	5-52
NOTE BOOK NO.	
GRADES CHECKED	
B. M. NOTED	
STRUCTURE NOTATIONS CHKD.	



MILE 4 - STA. 164 + 34 TO STA. 216 + 82 = 5248 FT. = 0.994 MI. TOTAL LENGTH OF PROJECT = 22,148 FT. = 4.195 MILES

