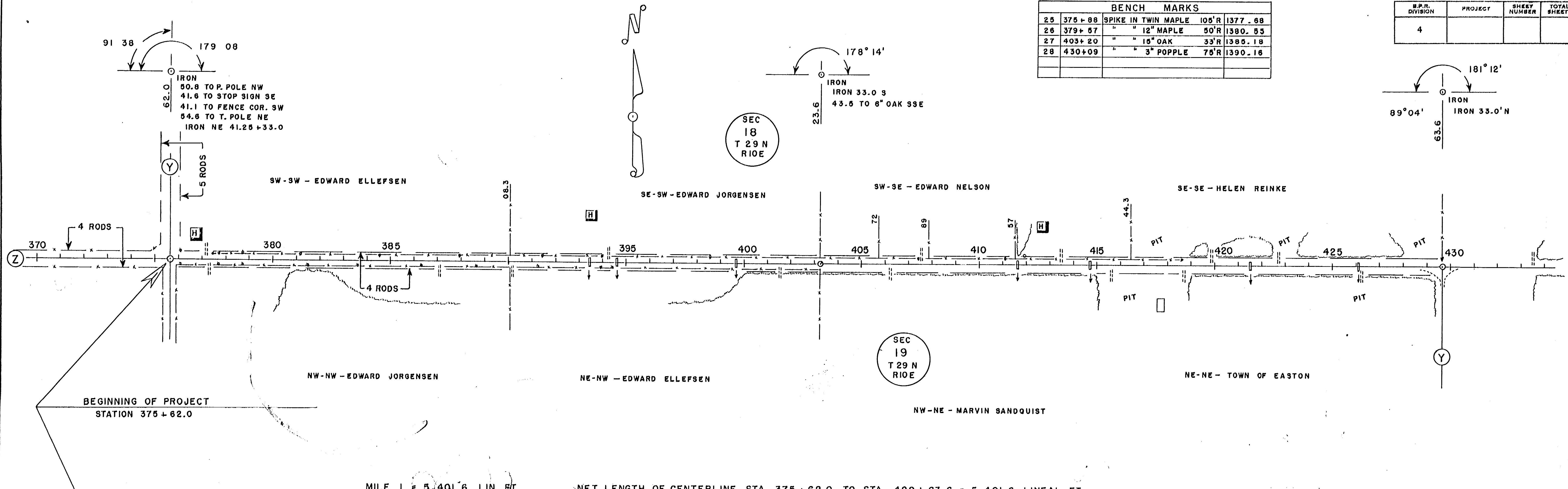


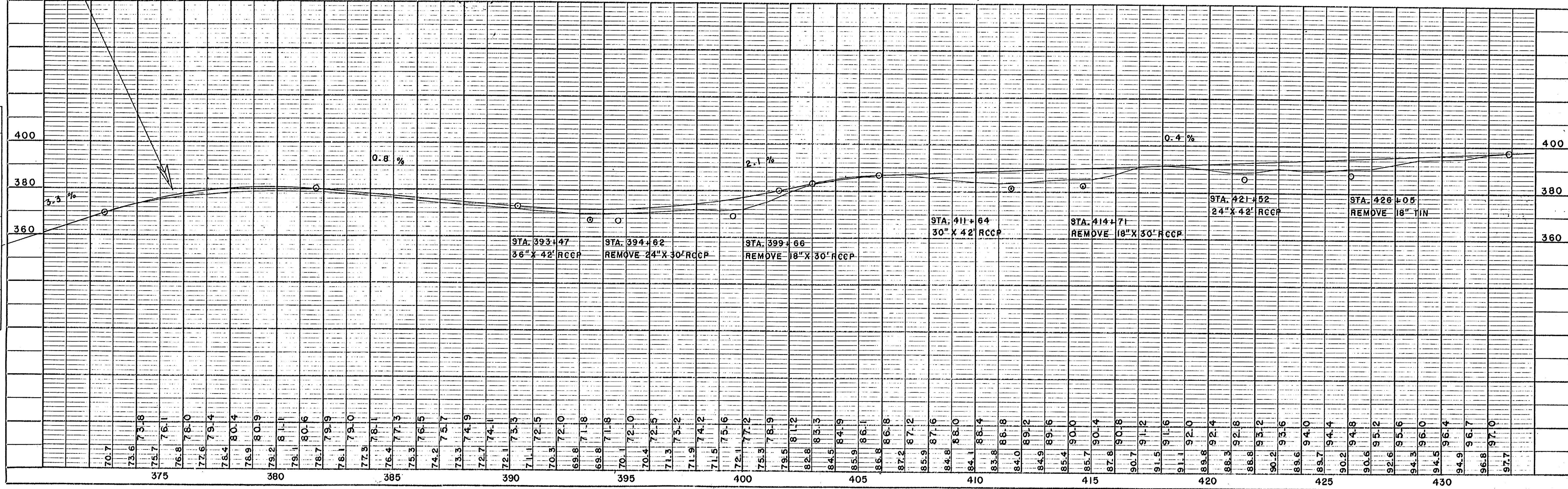
C.T.H. "Z" - TOWN OF PLOVER

BENCH MARKS				
25	375+88	SPIKE IN TWIN MAPLE	105'R	1377.68
26	379+57	" " 12" MAPLE	50'R	1380.53
27	403+20	" " 15" OAK	33'R	1385.18
28	430+09	" " 3" POPLAR	75'R	1390.16

B.P.R. DIVISION	PROJECT	SHEET NUMBER	TOTAL SHEETS
4			



MILE I = 5,401.6 LIN. FT. NET LENGTH OF CENTERLINE STA. 375+62.0 TO STA. 429+63.6 = 5,401.6 LINEAL FT.



PLAN	DATE
SURVEYED	4-36
NOTED	
ALIGNED	
CHECKED	
BY	

PROFILE	DATE
SURVEYED	4-36
NOTED	
CHECKED	
BY	

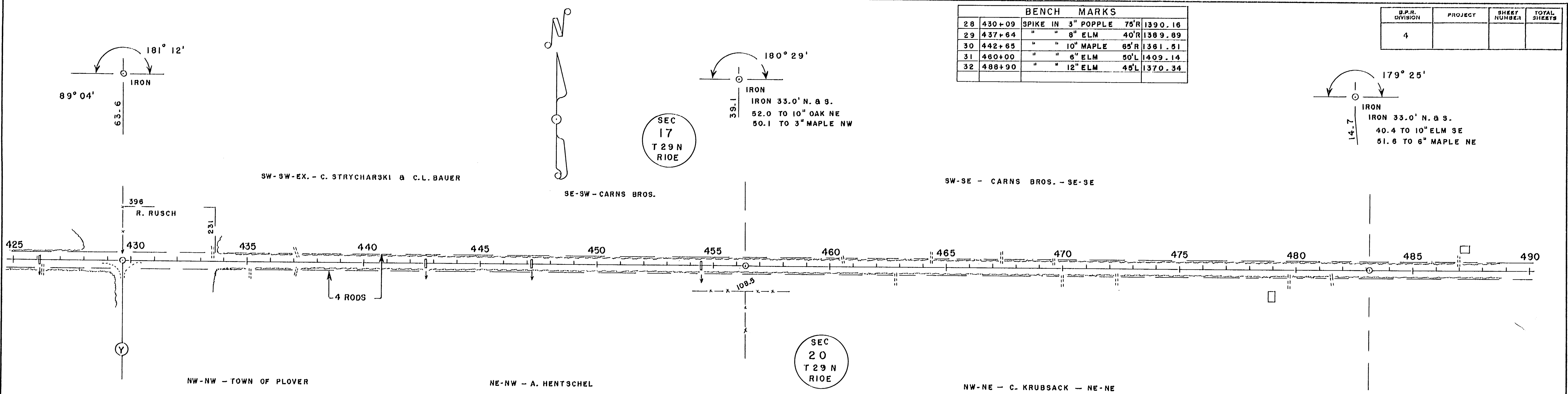
C.T.H. "Z" - TOWN OF PLOVER

DATE	6-3-56
BY	C. E. C.
CHIEF ENGINEER	
DATE	6-3-56
BY	C. E. C.
CHIEF ENGINEER	
DATE	
BY	
CHIEF ENGINEER	

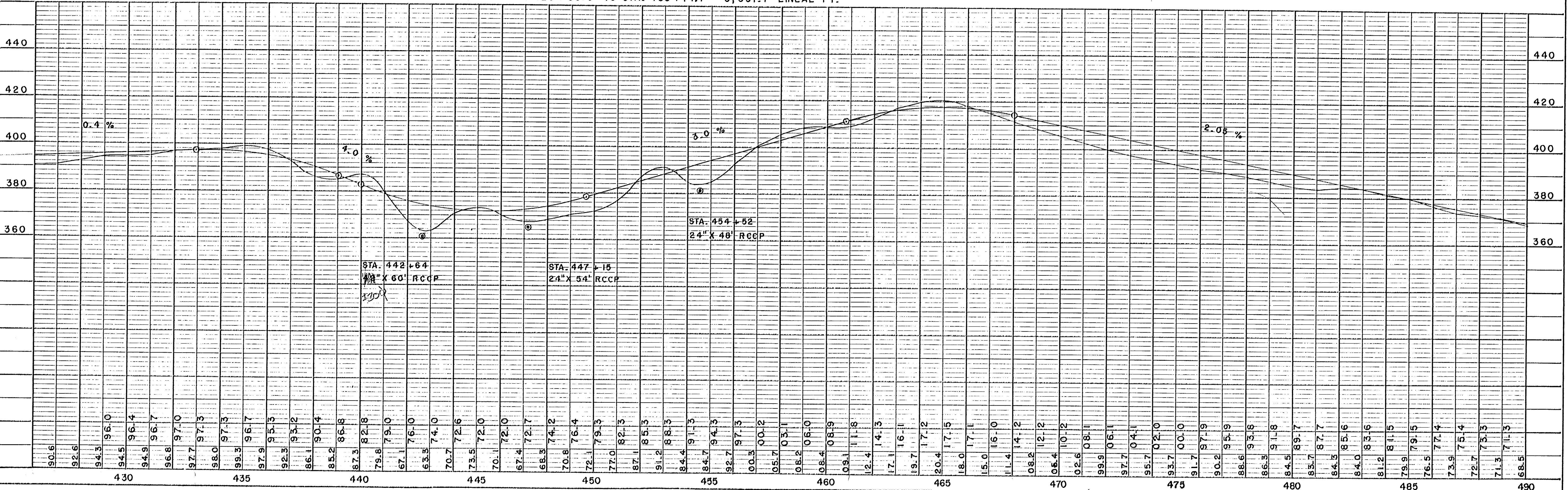
DATE	6-3-56
BY	C. E. C.
CHIEF ENGINEER	
DATE	
BY	
CHIEF ENGINEER	

BENCH MARKS			
28	430+09	SPIKE IN 3" POPPLE	75'R 1390.16
29	437+64	" " 8" ELM	40'R 1389.89
30	442+65	" " 10" MAPLE	85'R 1381.51
31	460+00	" " 8" ELM	50'L 1409.14
32	488+90	" " 12" ELM	45'L 1370.34

B.P.R. DIVISION	PROJECT	SHEET NUMBER	TOTAL SHEETS
4			



NET LENGTH OF CENTERLINE STA. 429+63.6 TO STA. 483+14.7 = 5,351.1 LINEAL FT.



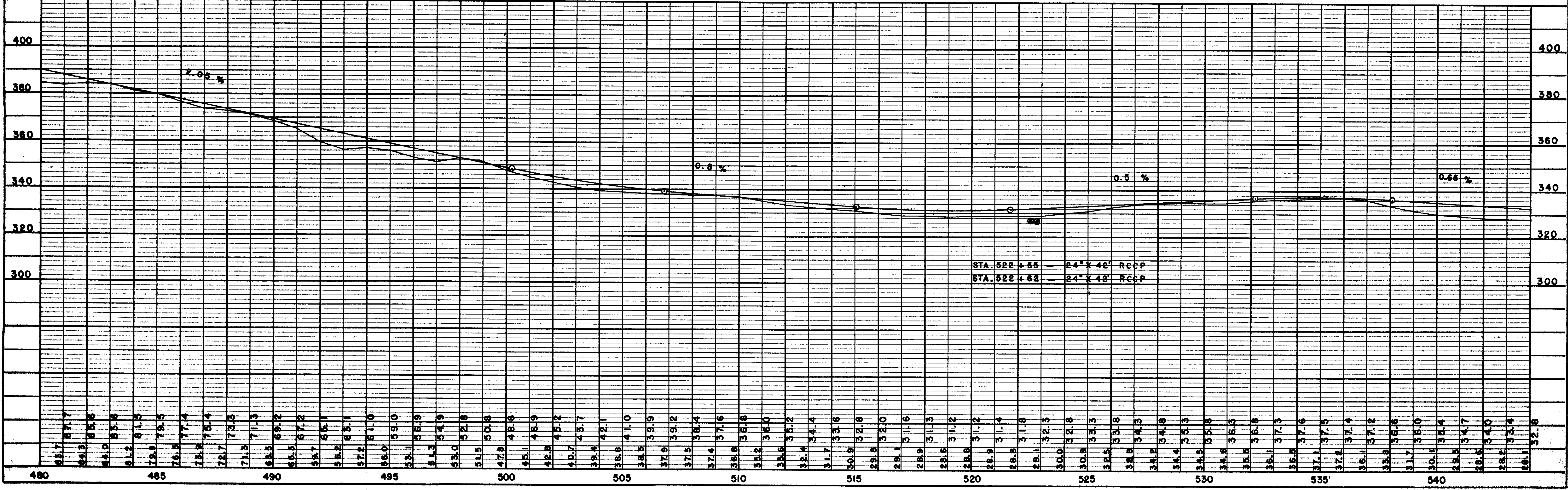
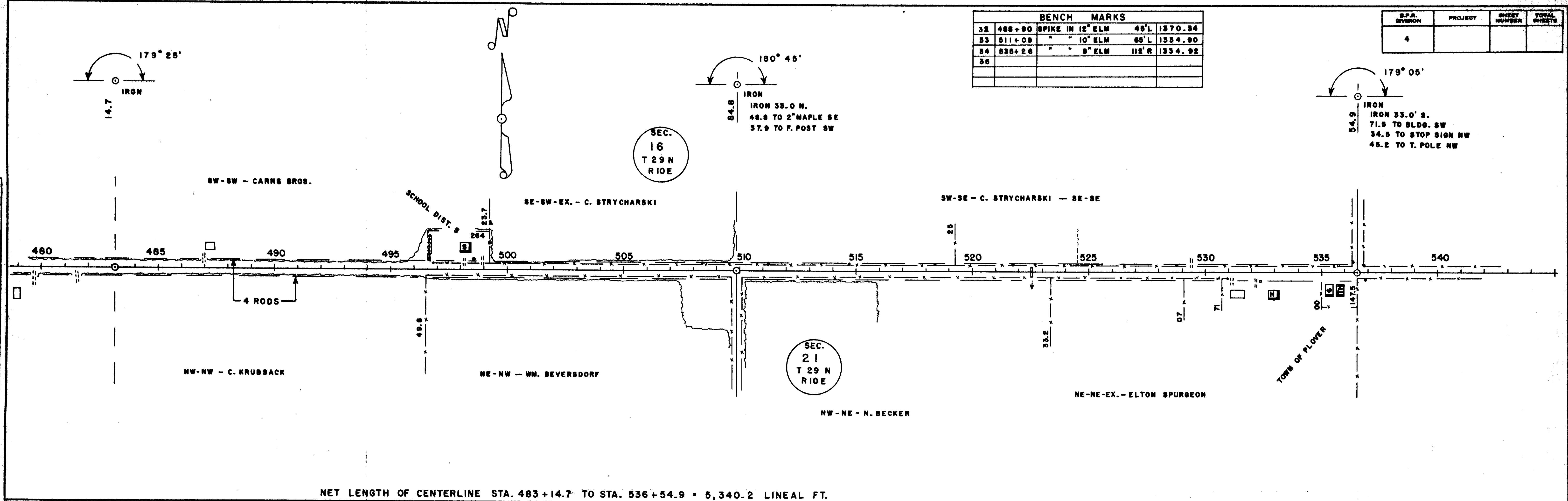
C.T.H. "Z" - TOWN OF PLOVER

BENCH MARKS			
32	488+90	SPIKE IN 12" ELM	48'L 1370.84
33	511+09	" " 10" ELM	66'L 1334.90
34	535+26	" " 8" ELM	112'R 1334.92
35			

S.P.R. DIVISION	PROJECT	SHEET NUMBER	TOTAL SHEETS
4			

PLAN	DATE	BY	CHKD.
PLANNING			
DESIGN			
CONSTRUCTION			

PROFILE	DATE	BY	CHKD.
PLANNING			
DESIGN			
CONSTRUCTION			





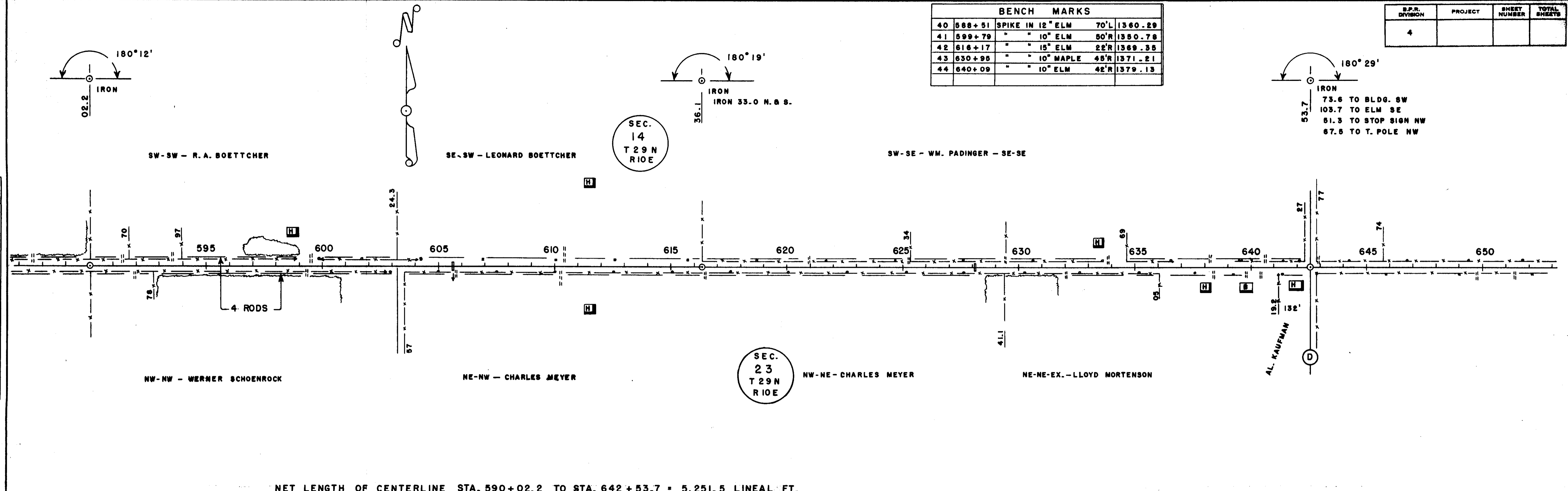
C.T.H. "Z" - TOWN OF PLOVER

BENCH MARKS			
40	588+51	SPIKE IN 12" ELM	70'L 1360.29
41	599+79	" " 10" ELM	80'R 1350.78
42	616+17	" " 15" ELM	22'R 1369.35
43	630+95	" " 10" MAPLE	48'R 1371.21
44	640+09	" " 10" ELM	42'R 1379.13

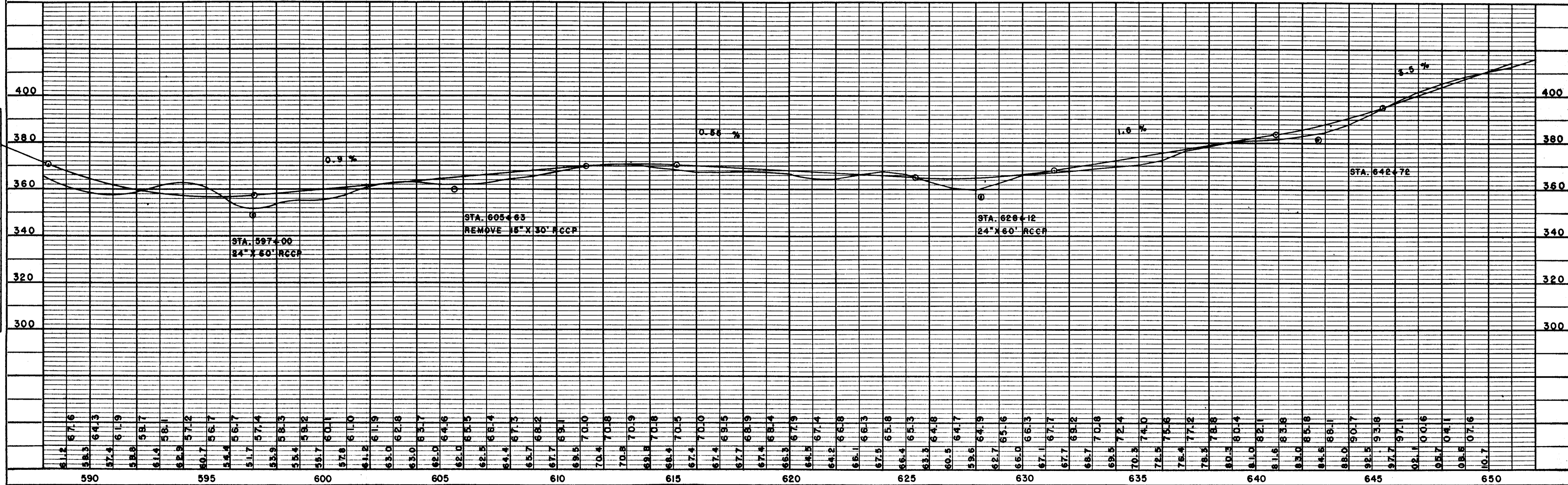
S.P.R. DIVISION	PROJECT	SHEET NUMBER	TOTAL SHEETS
4			

PLAN	DATE
REVISIONS DRAWN CHECKED DATE	
DATE	

PROFILE	DATE
REVISIONS DRAWN CHECKED DATE	
DATE	



NET LENGTH OF CENTERLINE STA. 590+02.2 TO STA. 642+53.7 = 5,251.5 LINEAL FT.



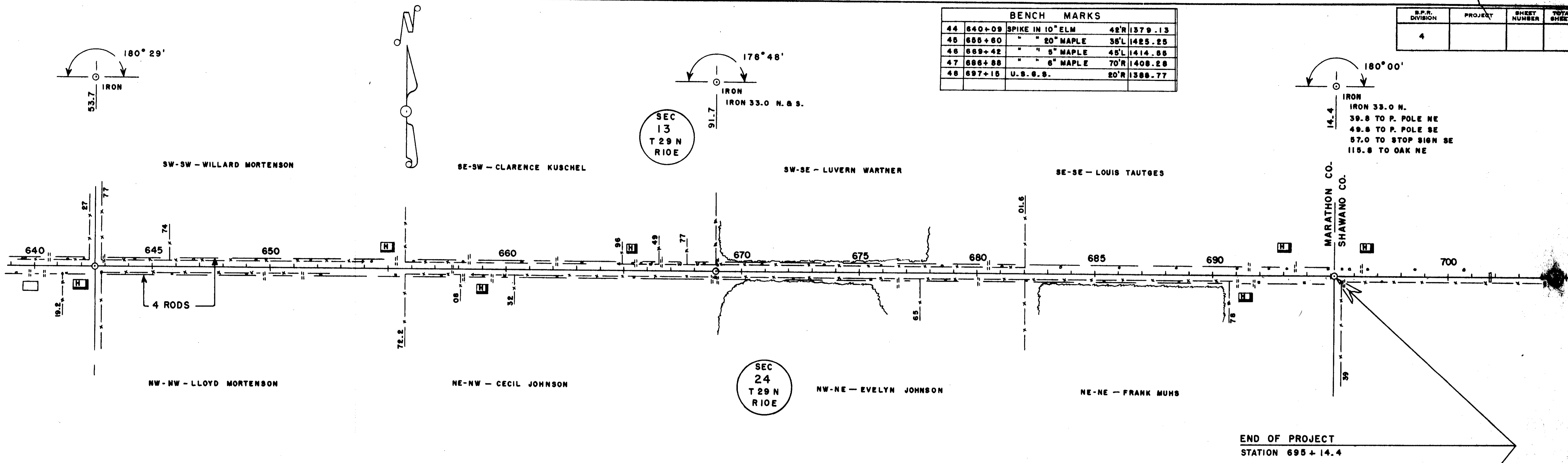
C.T.H. "Z" - TOWN OF PLOVER

BENCH MARKS			
44	640+09	SPIKE IN 10" ELM	42'R 1379.13
45	655+60	" " 20" MAPLE	36'L 1425.25
46	669+42	" " 5" MAPLE	45'L 1414.65
47	686+88	" " 6" MAPLE	70'R 1408.28
48	697+18	U.S.G.S.	20'R 1388.77

B.P.R. DIVISION	PROJECT	SHEET NUMBER	TOTAL SHEETS
4			

PLAN	DATE
SURVEYED	6-2-58
PLOTTED	
ALIGNED CHECKED	
NOTE BOOK	
NO.	

PROFILE	DATE
SURVEYED	6-2-58
PLOTTED	
ALIGNED CHECKED	
NOTE BOOK	
NO.	



NET LENGTH OF CENTERLINE STA. 642+53.7 TO STA. 695+14.4 = 5,260.7 LINEAL FT.

